

# MAAC Field Requirement Information

## 1. Permitted MAAC Operations

The KwadsRUs (KRU) home field is primarily used for outdoor multi-rotor flying, specially, quadcopter (aka "drone") organized racing. Club members generally gather to fly at racing events, and occasionally, for private practice sessions, setting up track of obstacles spread in an area of about 50 x 40 m.



Site location:

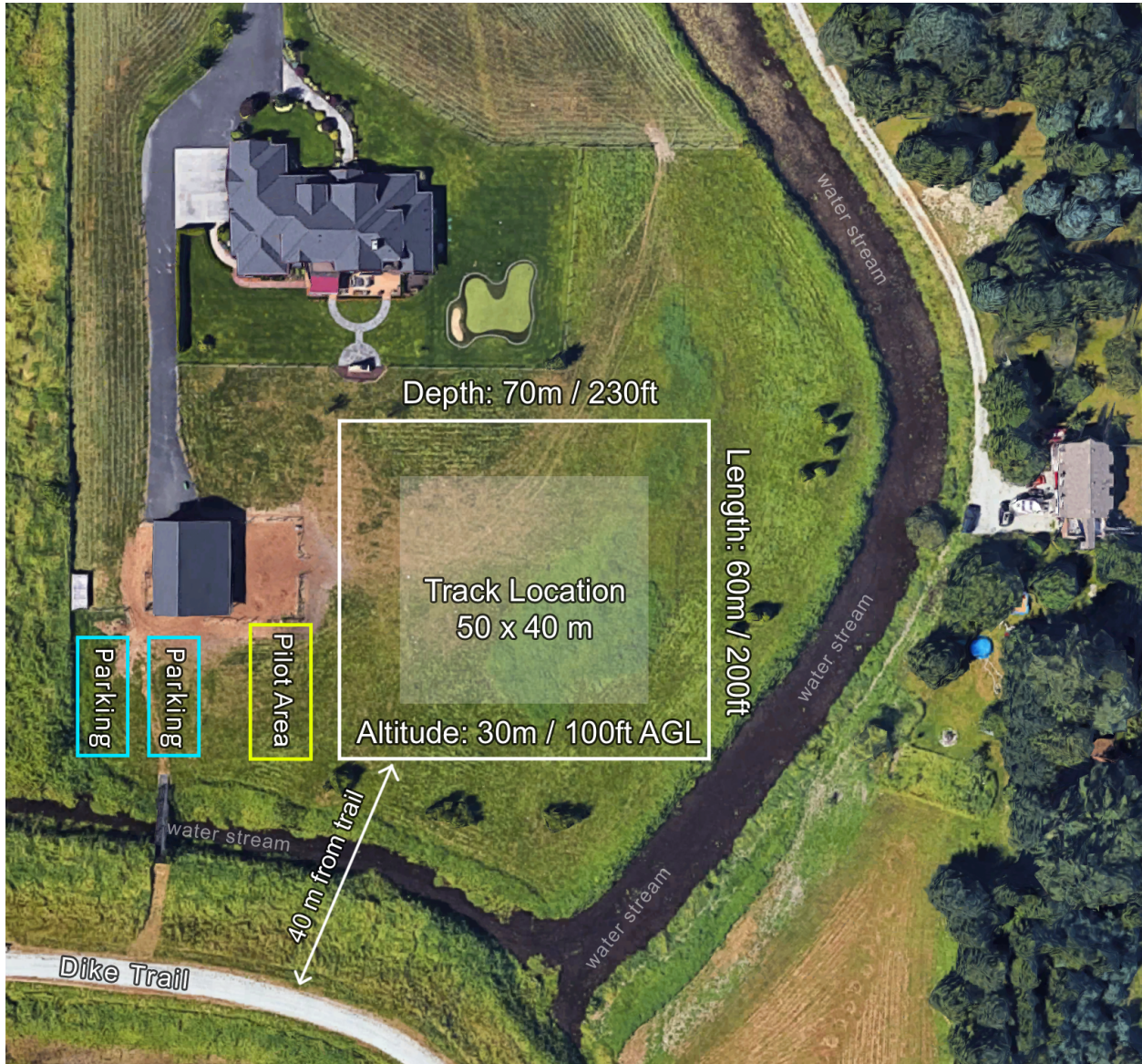
[19822 McNeil Road, Pitt Meadows, BC V3Y 2T9](https://www.google.com/maps/place/19822+McNeil+Road,+Pitt+Meadows,+BC+V3Y+2T9)

[49.270030, -122.670347](https://www.google.com/maps/place/49.270030,-122.670347)

Pilot area location:

[49.269821, -122.670859](https://www.google.com/maps/place/49.269821,-122.670859)

## 2. Site Map



## 3. Flying Area

Depth: 70m / 230 ft  
Length: 60m / 200 ft  
Altitude: 30m / 100 ft

Racing Track area:  
Depth: 50m / 165 ft  
Length: 40m / 130 ft

## 4. Current Club rules

Every member of the club is required to be fully aware of our safety rules available at <http://kwadsrus.org/safety>. This safety handbook is a living document, forked from the MultiGP's official safety guideline document, with modifications to reflect KRU's rules. A link to this handbook is included every time a new race event is published for KRU's members.