



# Flight Plan & Site Survey

Created using **RPAS Wilco®**

Reference No:	A71899
Title:	CRASH 05-16-2024
Pilot Name:	Alain Carpentier
Pilot Certificate:	PC2306520264
Flight Start:	May 16, 2024 7:05 AM
Flight End:	May 16, 2024 11:59 PM
Flight Address:	Lat: 45.638692 Lng: -73.929405
Flight Area (Latitude):	45° 37' 50.97" N ( 45.631 )
Flight Area (Longitude):	73° 55' 58.37" W ( -73.933 )
Altitude - Radius:	<b>Alt:</b> 400 ft - <b>Rad:</b> 926.0 m ( 0.5 nm)
Classification:	RESTRICTED
FIR - Contact:	CZUL - 506-867-7173

#### Notes:

Your flight is in restricted airspace.

Please obtain approval from controlling agency found in the DAH.

Please ensure you received all required authorizations prior to flight.

#### Disclaimer

This Site Survey was created using RPAS Wilco by AIM Robotics. The flight plan contained is intended only for RPAS flights on the date/time and location specified. The user accepts all responsibility for the accuracy and completeness of the information contained.

For the complete Terms & Conditions, see

<https://rpaswilco.com/#/tnc>

#### Included

- Site Survey
- Obstacles (if available)
- Nearby Aerodromes
- Canadian Aviation Regulations
- GFA
- Aerodrome Supplements
  - METAR & TAF (if available)
  - NOTAMS
  - CFS





## Flight Map



## RPAS Specification

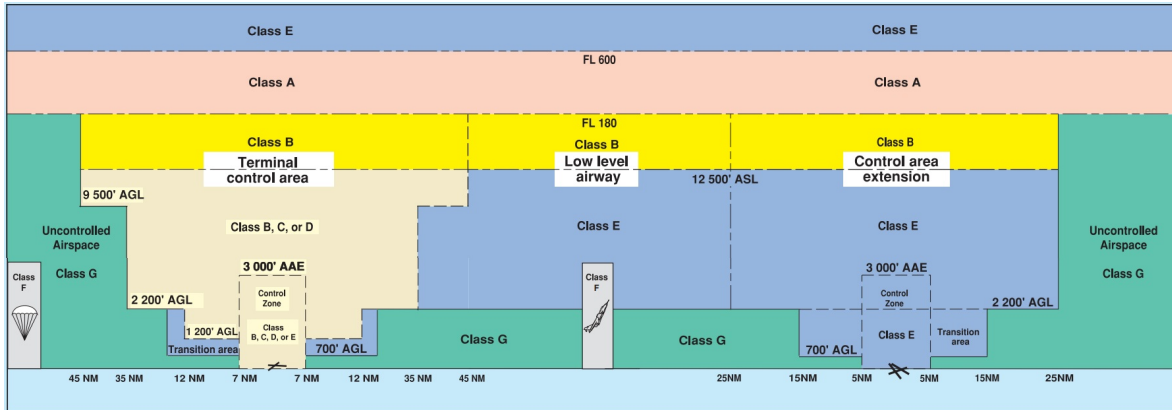
- **Manufacturer:**  
MAAC
- **Model:**  
MODEL AIRPLANE (Apprentice)
- **Registration Number:**  
C-2315325447
- **Eligible for advanced operations:**  
Yes
- **Manufacturer RPAS safety assurance:**
  - Controlled Airspace: YES
  - Near People: NO
  - Over People: NO

## MAP Details

	Latitude	Longitude
 MODEL	45° 37' 50.97" N ( 45.631 )	73° 55' 58.37" W ( -73.933 )
 Pilot	( )	( )
 Payload Op.	( )	( )
 Observer	( )	( )

Latitude	Longitude
Latitude	Longitude

## Airspace Classification



## Overlying Airspaces

Class	Name	Floor	Ceiling
R	CYR601 MIRABEL, QC	SFC	1300MSL
C	Montréal Intl CZ XPNDR MANDRY	SFC	2000MSL
E	T616 Airway	2200AGL	12500MSL
B	T616 Airway	12500MSL	18000MSL
E	T649 Airway	2200AGL	12500MSL
B	T649 Airway	12500MSL	18000MSL
E	T693 Airway	2200AGL	12500MSL
B	T693 Airway	12500MSL	18000MSL
E	T781 Airway	2200AGL	12500MSL
B	T781 Airway	12500MSL	18000MSL
E	T614 Airway	2200AGL	12500MSL
B	T614 Airway	12500MSL	18000MSL
B	T662 Airway	12500MSL	18000MSL
E	T662 Airway	2200AGL	12500MSL
E	T705 Airway	2200AGL	12500MSL
B	T705 Airway	12500MSL	18000MSL
E	Montreal FIR CAE	2000MSL	12500MSL
B	Montreal FIR CAE	12500MSL	18000MSL
C	Montréal, QC TCA XPNDR MANDRY	3000MSL	5000MSL
C	Montréal, QC TCA XPNDR MANDRY	2000MSL	3000MSL
C	Montréal, QC TCA XPNDR MANDRY	5000MSL	12500MSL
E	Montreal FIR CAE	6000MSL	12500MSL
B	Montreal FIR CAE	12500MSL	18000MSL

## Nearest Aerodromes & Distance from Operation

MONTREAL (BELL) (CSW5 - HELIPOINT - Reg)	Lat: 45.685	Long: -73.931	6.026KM	3.25NM	N
MONTREAL INTL (MIRABEL) (CYMX - AERODROME - Cert)	Lat: 45.68	Long: -74.039	9.896KM	5.34NM	NW
MIRABEL HELICO (CMH4 - HELIPOINT - Reg)	Lat: 45.695	Long: -73.953	7.305KM	3.94NM	N
LAVAL (ARTOPEX PLUS) (CLP2 - HELIPOINT - Cert)	Lat: 45.579	Long: -73.75	15.35KM	8.29NM	E
ST-JEROME (HYDRO-QUEBEC) (CSZ6 - HELIPOINT - Cert)	Lat: 45.771	Long: -74.027	17.215KM	9.3NM	NW



## QUEBEC

## AERODROME/FACILITY DIRECTORY

## MONTRÉAL (BELL) QC (Heli)

CSW5

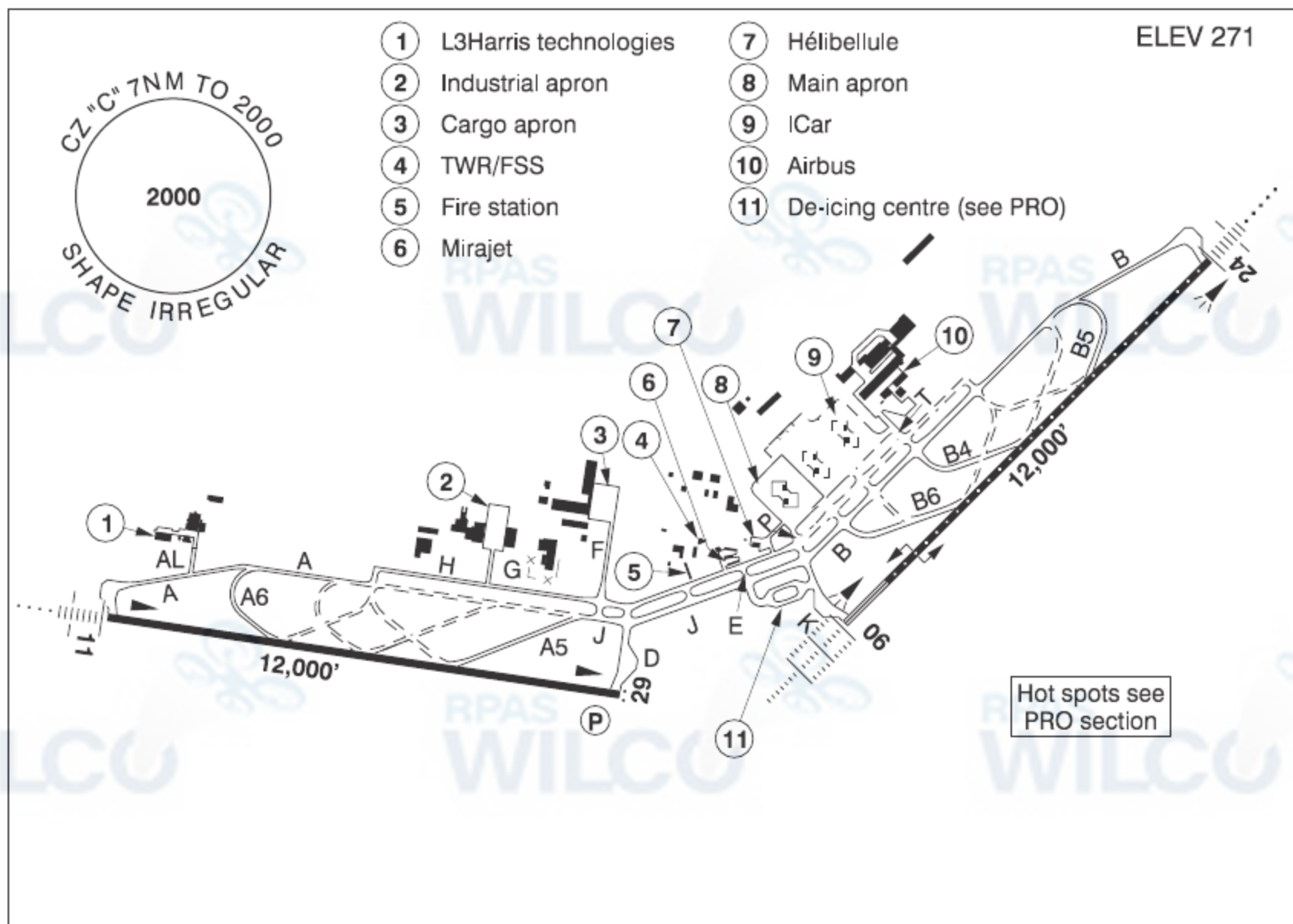
<b>REF</b>	N45 41 06 W73 55 52 15°W (2013) UTC-5(4) Elev 221' VTA A5002	
<b>OPR</b>	Bell Helicopter Textron 450-437-8039 Reg PPR	
<b>PF</b>	A-1 C-2,3,4	
<b>FLT PLN</b>	(bil)	
<b>FIC</b>	Québec 866-GOMÉTÉO or 866-WXBRIEF (Toll free within Canada) or 866-541-4105 (Toll free within Canada & USA)	
<b>ACC</b>	514-633-3211	
<b>SERVICES</b> <b>ARFF</b>	CAT 3	
<b>HELI DATA</b>	FATO/TLOF 06L(061°)/24R(241°) 1000' x 100' ASPH Day use only FATO/TLOF 06R(061°)/24L(241°) 800' x 100' ASPH Day use only FATO/TLOF 92' x 92' ASPH Safety area 100' x 100' Day use only Max heli overall length 61'	
<b>LIGHTING</b>	FH (apron)	
<b>COMM</b>	(bil)	
<b>RADIO</b>	Mirabel 119.1 (E) 03-11Z‡	
<b>TWR</b>	Mirabel 119.1 (E) 11-03Z‡	
<b>A/G</b>	Tour de Bell 130.25 382.6 1200-2230Z‡	
<b>PRO</b>	White X markings affixed to lengthened FATOs are used as target point for autorotation maneuvers. Clnc rqr'd to penetrate in CYR601, CYR624 and CYR631. See Montreal Intl (Mirabel) VTPC.	
<b>CAUTION</b>	Double set high voltage P-lines aprx 1550' S and SE of heli aprx 410 ASL (190 AGL). Southern P-line marked. Two lgtd roof-top antennas on main bldg aprx 346 ASL (125 AGL).	

**QUEBEC**

**AERODROME/FACILITY DIRECTORY**

**MONTRÉAL INTL (MIRABEL) QC**

**CYMX**



<b>REF</b>	N45 40 47 W74 02 19 21NW 15°W UTC-5(4) Elev 271' VTA A5002 LO6 LO7 LO8 HI5 T2 CAP OC
<b>OPR</b>	Aéroports de Montréal 514-633-3223 H24 Cert Ldg fees
<b>PF</b>	C-1,2,3,5,6 D-4
<b>CUST</b>	AOE/15 13-01Z‡ PAX and crew only Hélibellule FBO 24 hrs PN 450-476-1000 Fax 450-476-1002 cargo 13-22Z‡ Mon-Fri (exc hols) 450-476-3168.
<b>FLT PLN</b>	(bil)
<b>FIC</b>	Québec 866-GOMÉTÉO or 866-WXBRIEF (Toll free within Canada) or 866-541-4105 (Toll free within Canada & USA)
<b>ACC</b>	Montréal 514-633-3211 or 800-633-1353. All Flt Plns, IFR tng flts PPR. Flt Plns by Fax at 514-633-2877 & include phone numbers where pilot can be reached prior to dep.
<b>WX</b>	METAR H24. TAF H24, issue times: 00, 06, 12, 18Z.
<b>SERVICES</b>	
<b>FUEL</b>	JA-1, 100LL. JA-1 avbl with Swissport Canada Fuel Services Inc 514-601-8403 or Hélibellule FBO. 100LL avbl with Hélibellule FBO.
<b>S</b>	2
<b>SUP FL</b>	D & A-ice 122.25 Sun from 07Z‡, avbl O/R only 1 hr PN
<b>MIL ADV</b>	Tran acft to L3Harris Technologies Inc. ctc svcg (123.25)
<b>PVT ADV</b>	Aeromag 2000 122.25 450-476-1850 Hélibellule FBO 122.325 450-476-1000 12-22Z‡ Mon-Fri, 13-22Z‡ Sat-Sun. O/T call out chg.
<b>MIL CON</b>	Avjet Holding Inc. 514-212-5964

## QUEBEC

## AERODROME/FACILITY DIRECTORY

## MONTRÉAL INTL (MIRABEL) QC (Cont'd)

CYMX

<b>RWY DATA</b>	Rwy 06(060°)/24(240°) 12,000x200 CONC Rwy 11(113°)/29(293°) 12,000x200 CONC Rwy 29 down 0.65% first 3412' RAG: Rwy 06/24 (Thld 06) BAK 12 (1358'). NOTAM issued when cable is up. Cable availability 12-21Z† Mon-Fri (exc hols). 24 hrs PN. Fees applicable, 450-476-4490 or 514-883-6989. All acft requiring cable 2 hrs PN to L3Harris Technologies Inc. 450-476-4455.
<b>RWY CERT</b>	Rwy 06 RVR 600/Rwy 24 RVR 1200(1/4sm) AGN V Rwy 11/29 AGN V
<b>TWY</b>	All twys are 23m with 13m shoulders. Twy AL, G, P & T: Uncontrolled
<b>APRON</b>	Main & Cargo Aprons: Uncontrolled; broadcast intention on 122.4 before maneuvering. Apron Airbus, Mirajet, Helibellule, L3Harris Technologies: Pvt
<b>RCR</b>	Opr 07-17Z† Mon-Fri, 08-17Z† Sat-Sun. CRFI O/T call out chg.
<b>LIGHTING</b>	06-AL(TE HI CL TDZL), 24-AN(TE HI CL), 11-AN(TE HI), 29-AS(TE HI) P3
<b>COMM</b>	(bil)
<b>RADIO</b>	Mirabel 119.1 (E) 03-11Z† (emerg only 450-476-3141)
<b>ATIS</b>	(English) 125.7 450-476-3031; (French) 126.1 450-476-3095
<b>APRON ADV</b>	tfc 122.4
<b>GND</b>	121.8 11-03Z†
<b>GND ADV</b>	121.8 PTC avbl 03-11Z† (emerg only 450-476-3141)
<b>TWR</b>	119.1 (E) 11-03Z† (emerg only 450-476-3141)
<b>MF</b>	rdo 119.1 03-11Z† (emerg only 450-476-3141) Shape irregular (see Mirabel VTPC) 7 NM 2000 ASL and fr 7-11NM btwn 1500-2000 ASL (CAR 602.98)
<b>ARR</b>	Montréal 124.65 268.3
<b>DEP</b>	Montréal 124.65 268.3
<b>VFR ADV</b>	Montréal 134.15
<b>NAV</b>	
<b>ILS</b>	IKP 111.3 (Rwy 06) RVR LOC reliable only within 10° either side of centreline; IIT 111.7 (Rwy 24) RVR LOC reliable only within 10° either side of centreline.

**MONTRÉAL INTL (MIRABEL) QC (Cont'd)****CYMX****PRO**

CZ and Terminal Control Areas Class C when TWR in operation O/T Class E.

Transponder Mode C rqr'd within Class E CZ, within Class E Terminal Control Areas and within Transition Areas - See MONTRÉAL INTL (MIRABEL) VFR TERMINAL PROCEDURES CHART.

Right hand circuits Rwy 24 and 11 (CAR 602.96)

Twy I eastbound only. Twy J westbound only.

In accordance with CAR 602.96(3)(d), the pilot in command of an aircraft taxiing for departure during ILS CAT II ops shall not taxi further than the ILS CAT II holding point without a valid ATC IFR clearance.

The Minister has authorized specific operating restrictions regarding communications intended for the MF, as well as the introduction of a Ground Advisory frequency (GND ADV) pursuant to CARs 602.97 (2), 602.98 (1) and 602.99.

**Departure procedure:** Prior to taxi for departure; contact GROUND ADV on 121.8 for clearance and initial advisory information. After receiving initial advisory information, GND ADV will initiate communication transfer to RADIO on 119.1 prior to entering the runway/departure surface. Pilots are required to ascertain that there is no likelihood of collision with another aircraft or a vehicle prior to departure as stated in CAR 602.96 2a) and b).

**Arrival procedure:** After exiting the runway/arrival surface and reporting clear on the radio frequency, pilots will be directed to contact GROUND ADV on 121.8 for ground traffic and taxiing information before entering the taxiway.

TWR and RADIO 24hrs

After landing Rwy 06, left turns on Twy B6 or B4 not authorised for jet acft 24m (79') wingspan or more.

Acft with wingspan of 65m (213') or over must park at gates 111 or 116 and de-ice at gate 116 only.

**De-icing guiding lights procedure:** Direction lgts panel; when red, hold posn. When green, follow direction of arrows. Prkg lgts panel; when green taxi straight ahead til turns red.

De-icing centre procedure:

1. **1 hr prior to push back**, ctc AEROMAG on 122.25 or 450-476-1850, with de-icing type.
2. **Immediately prior to push back**, check waiting time.
3. On Twys J or K, hold short of the de-icing pad and ctc AEROMAG 122.25.
4. Follow AEROMAG instructions and guidelines to the South de-icing bay and confirm "**brakes set**", acft configured and engines at idle.
5. When de-icing is completed, **before moving acft** wait for AEROMAG instructions.
6. Exiting de-icing pad, on AEROMAG instructions, ctc Mirabel twr/rdo on 119.1.

QUEBEC

AERODROME/FACILITY DIRECTORY

**MONTRÉAL INTL (MIRABEL) QC (Cont'd)****CYMX****PRO (Cont'd)****Distance between parking centreline and obstacles:**

- With lamp post on right side: 40m
- With bldg on left side: 40.5m

**Low Visibility Procedures:** See CAP**Airspace:** Standardized use of common freq 122.1 in Class G airspace around the CZ.**Training:** VFR circuits PPR 1-800-633-1353 during TWR hrs of ops.**Apron:** All acft clockwise except acft with wingspan of 65m (213') and over counterclockwise to access gates 111 & 116.

Mirabel aprt is intended for scheduled cargo and gen avn. For gen avn svcs PN with Hélibellule (see PVT ADV).

**Fighter aircraft only:** To reduce the risk of debris ingestion for ops on Rwy 06 & 24, always use the following twys:

On departure: Twys A, H, I, K (backtrack rwy if departing Rwy 24).

On arrival: Twys K, J, F, H and A (backtrack rwy if landing Rwy 06).

For ops on Rwy 11/29 for tkof Rwy 29 always taxi via: Twy A and backtrack rwy to Thld 29.

**VFR Codes:** Refer to MONTRÉAL VTPC section VFR FLIGHTS IN MONTRÉAL/TRUDEAU, MONTRÉAL/ST-HUBERT, MONTRÉAL/MIRABEL AND MONTRÉAL TERMINAL CLASS C AIRSPACE.

Pilots should refer to Canadian Airport Charts (CAC) to obtain details on established hot spots, prior to operating on maneuvering areas. CAC are available for free on the NAV CANADA website.

**CAUTION**

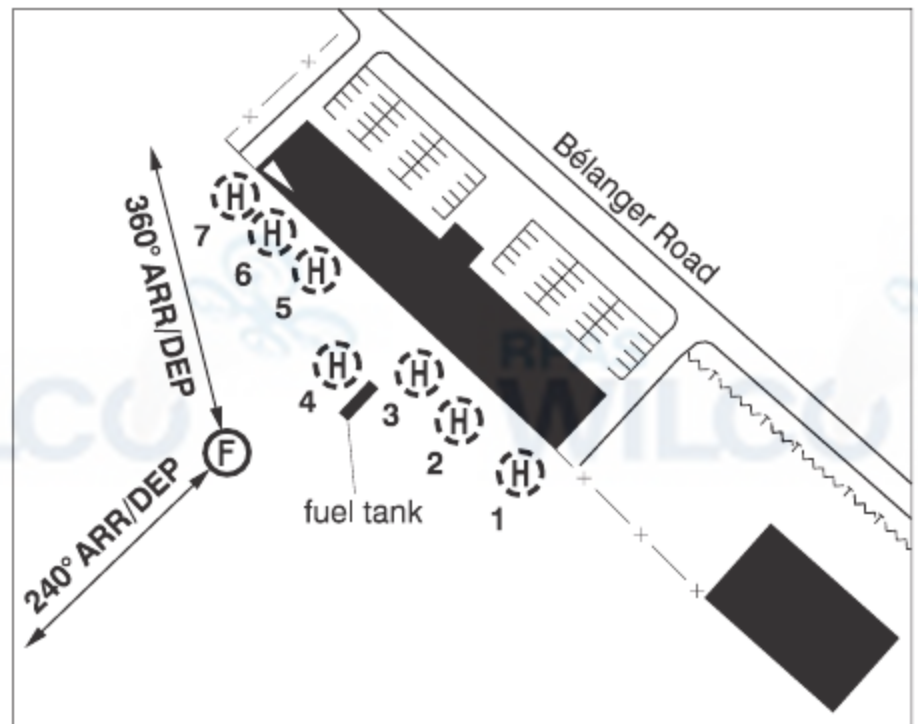
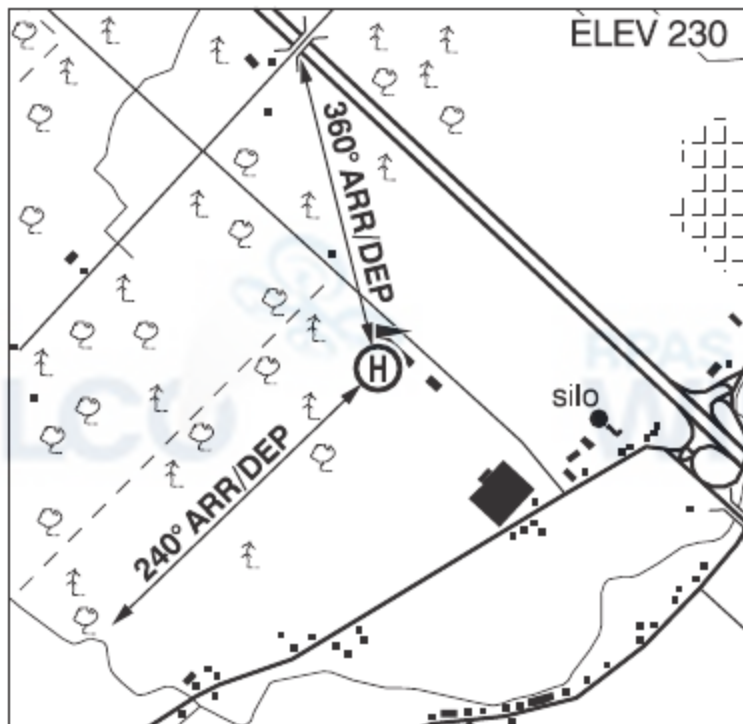
Bell Helicopter testing from 1300 to 2000 ASL above CYR601 and CYR624

## QUEBEC

## AERODROME/FACILITY DIRECTORY

## MONTRÉAL / MIRABEL HÉLICO QC (Heli)

CMH4



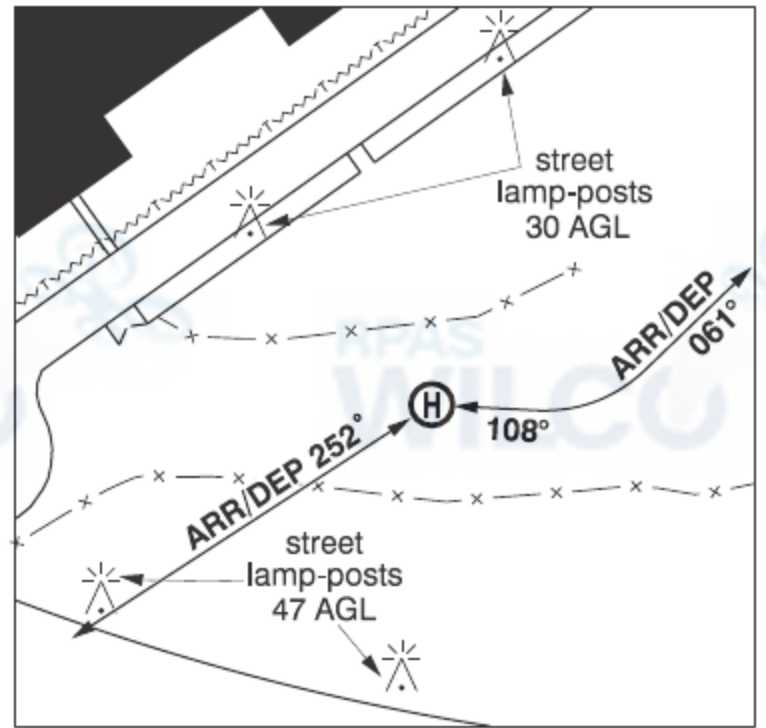
<b>REF</b>	N45 41 44 W73 57 09 Adj 14°W (2015) UTC-5(4) Elev 230' VTA A5002
<b>OPR</b>	Mirabel Hélico 514-703-5507 Fax 450-963-1960 Reg PPR
<b>PF</b>	B-1 C-2,3,6
<b>FLT PLN</b>	
<b>FIC</b>	Québec 866-GOMETEO or 866-WXBRIEF (Toll free within Canada) or 866-541-4105 (Toll free within Canada & USA)
<b>SERVICES</b>	Call out chg may be levied for one or more svcs.
<b>FUEL</b>	100LL, JA
<b>OIL</b>	All
<b>S</b>	1,2,3,4 12-21Z† Mon-Fri
<b>HELI DATA</b>	FATO 64' x 64' ASPH Safety Area 85' x 85' Max heli overall length 43' Parking Pads 1-7: 51' dia ASPH
<b>COMM</b>	(bil)
<b>RADIO</b>	Mirabel 119.1 (E) 03-11Z†
<b>ATIS</b>	(English) 125.7 450-476-3031; (French) 126.1 450-476-3095
<b>TWR</b>	Mirabel 119.1 (E) 11-03Z†
<b>A/G</b>	Tour de Bell 130.25 382.6 5560.4 4242 1200-2230Z†
<b>PRO</b>	Arr/dep 240° & 360° fr heli, slope 8%, day use only.
<b>CAUTION</b>	Prkg pads loc less than 15' of fuel tank.

## QUEBEC

## AERODROME/FACILITY DIRECTORY

## MONTRÉAL / LAVAL (ARTOPEX PLUS) QC (Heli)

CLP2



<b>REF</b>	N45 34 43 W73 45 00 Adj 15°W UTC-5(4) Elev 133' VTA A5002
<b>OPR</b>	Groupe Pro Plus Inc 450-378-0189 FAX 450-378-4003 13-22Z† Mon-Fri Cert PPR
<b>PF</b>	C-1,2,3,4,5
<b>FLT PLN</b>	
<b>FIC</b>	Québec 866-GOMÉTÉO or 866-WXBRIEF (Toll free within Canada) or 866-541-4105 (Toll free within Canada & USA)
<b>HELI DATA</b>	FATO/TLOF 62' dia ASPH/compacted snow Safety Area 83' Max heli overall length 41.5'
<b>RCR</b>	Opr Ltd win maint
<b>COMM</b>	
<b>TWR</b>	Montréal 119.9
<b>TML</b>	Montréal 134.15
<b>PRO</b>	Arr/dep 252° fr heli (H3). Arr/dep curved 108° to 061° fr heli (H3).
<b>CAUTION</b>	Many street lamp-posts (30 & 47 AGL) around pad & hwy lamp-posts (125 AGL), see sketch. Antenna 338 ASL (200 AGL), 1015' N of pad.

## QUEBEC

## AERODROME/FACILITY DIRECTORY

**ST-JÉRÔME (HYDRO-QUÉBEC) QC (Heli)****CSZ6**

<b>REF</b>	N45 46 15 W74 01 37 Adj 15°W UTC-5(4) Elev 358' VTA A5002	
<b>OPR</b>	Hydro-Québec 438-827-4354 Cert PPR	
<b>PF</b>	C-1,2,3,4,5,6	
<b>FLT PLN</b>	(bil)	
<b>FIC</b>	Québec 866-GOMÉTÉO or 866-WXBRIEF (Toll free within Canada) or 866-541-4105 (Toll free within Canada & USA)	
<b>HELI DATA</b>	FATO/TLOF 64' x 64' CONC Safety Area 85' x 85' Max heli overall length 43'	
<b>RCR</b>	Opr	
<b>COMM</b>	(bil)	
<b>RADIO</b>	Mirabel 119.1 (E) 03-11Z†	
<b>TWR</b>	Mirabel 119.1 (E) 11-03Z†	
<b>ATF</b>	tfc 122.77 5NM to below 2000 ASL	
<b>TML</b>	Montréal 134.15	
<b>PRO</b>	Arr/dep 016° & 197° fr heli, slope 8% (H3), day use only.	

# Canadian Aviation Regulations

## Division III — General Operating and Flight Rules

For full listing please visit : <https://laws-lois.justice.gc.ca/eng/regulations/SOR-96-433/FullText.html#s-901.27>

### Visual Line-of-sight

- **901.11 (1)** Subject to subsection (2), no pilot shall operate a remotely piloted aircraft system unless the pilot or a visual observer has the aircraft in visual line-of-sight at all times during flight.
- **(2)** A pilot may operate a remotely piloted aircraft system without the pilot or a visual observer having the aircraft in visual line-of-sight if the operation is conducted in accordance with a special flight operations certificate — RPAS issued under section 903.03.

### Procedures

- **901.23 (1)** No pilot shall operate a remotely piloted aircraft system unless the following procedures are established:
  - **(a)** normal operating procedures, including pre-flight, take-off, launch, approach, landing and recovery procedures; and
  - **(b)** emergency procedures, including with respect to
    - **(i)** a control station failure,
    - **(ii)** an equipment failure,
    - **(iii)** a failure of the remotely piloted aircraft,
    - **(iv)** a loss of the command and control link,
    - **(v)** a fly-away, and
    - **(vi)** flight termination.
- **(2)** If the manufacturer of the remotely piloted aircraft system provides instructions with respect to the topics referred to in paragraphs (1)(a) and (b), the procedures established under subsection (1) shall reflect those instructions.
- **(3)** No pilot shall conduct the take-off or launch of a remotely piloted aircraft unless the procedures referred to in subsection (1) are reviewed before the flight by, and are immediately available to, each crew member.
- **(4)** No pilot shall operate a remotely piloted aircraft system unless the operation is conducted in accordance with the procedures referred to in subsection (1).

### Site Survey

**901.27** No pilot shall operate a remotely piloted aircraft system unless, before commencing operations, they determine that the site for take-off, launch, landing or recovery is suitable for the proposed operation by conducting a site survey that takes into account the following factors:

- **(a)** the boundaries of the area of operation;
- **(b)** the type of airspace and the applicable regulatory requirements;
- **(c)** the altitudes and routes to be used on the approach to and departure from the area of operation;
- **(d)** the proximity of manned aircraft operations;
- **(e)** the proximity of aerodromes, airports and heliports;
- **(f)** the location and height of obstacles, including wires, masts, buildings, cell phone towers and wind turbines;
- **(g)** the predominant weather and environmental conditions for the area of operation; and
- **(h)** the horizontal distances from persons not involved in the operation.

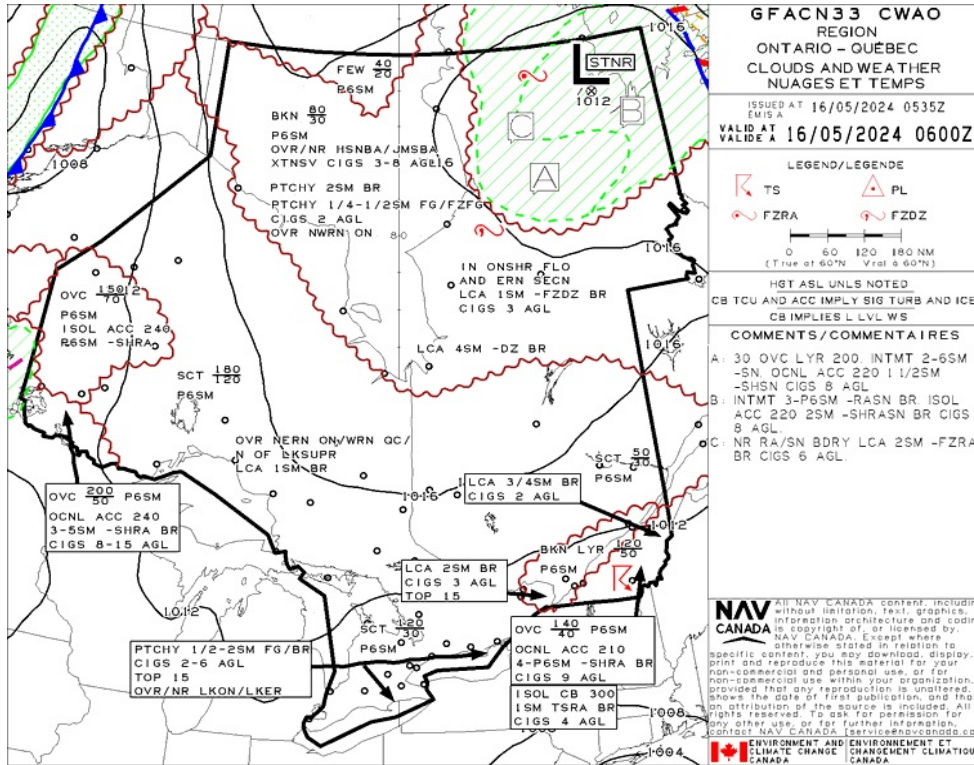
### Operations at or in the Vicinity of an Aerodrome, Airport or Heliport

- **901.47 (1)** No pilot shall operate a remotely piloted aircraft at or near an aerodrome that is listed in the *Canada Flight Supplement* or the *Water Aerodrome Supplement* in a manner that could interfere with an aircraft operating in the established traffic pattern.
- **(2)** Subject to section 901.73, no pilot shall operate a remotely piloted aircraft at a distance of less than
  - **(a)** three nautical miles from the centre of an airport; and
  - **(b)** one nautical mile from the centre of a heliport.
- **(3)** No pilot shall operate a remotely piloted aircraft at a distance of less than three nautical miles from the centre of an aerodrome operated under the authority of the Minister of National Defence unless the operation is conducted in accordance with a special flight operations certificate — RPAS issued under section 903.03.

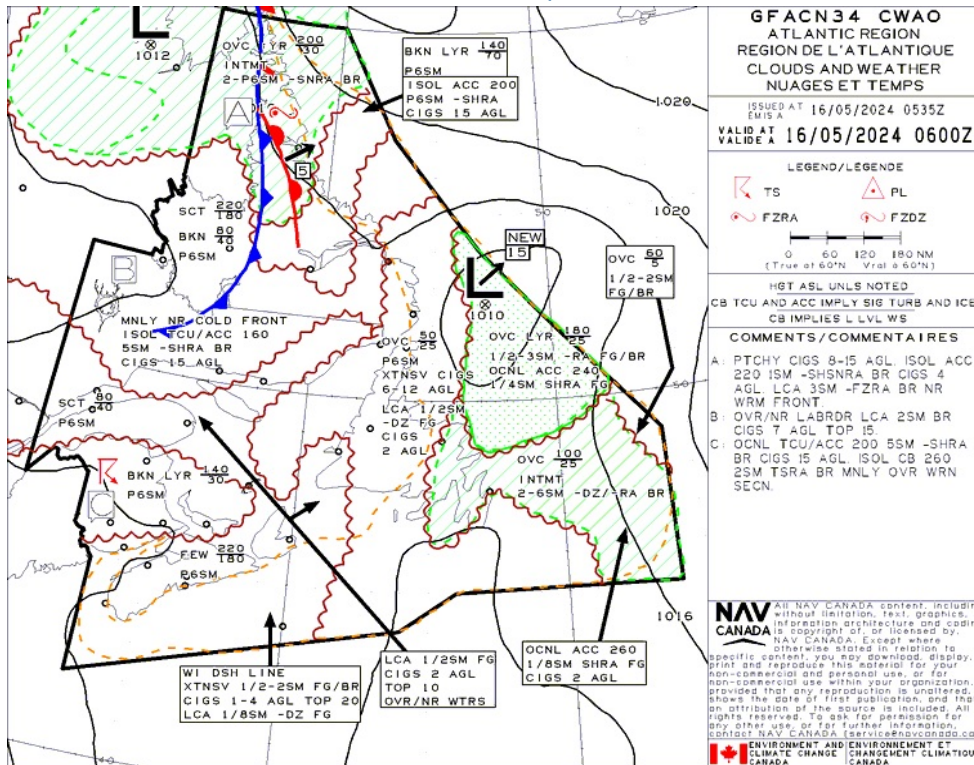
### Records

- **901.48 (1)** Every owner of a remotely piloted aircraft system shall keep the following records:
  - **(a)** a record containing the names of the pilots and other crew members who are involved in each flight and, in respect of the system, the time of each flight or series of flights; and
  - **(b)** a record containing the particulars of any mandatory action and any other maintenance action, modification or repair performed on the system, including
    - **(i)** the names of the persons who performed them,
    - **(ii)** the dates they were undertaken,
    - **(iii)** in the case of a modification, the manufacturer, model and a description of the part or equipment installed to modify the system, and
    - **(iv)** if applicable, any instructions provided to complete the work.
- **(2)** Every owner of a remotely piloted aircraft system shall ensure that the records referred to in subsection (1) are made available to the Minister on request and are retained for a period of
  - **(a)** in the case of the records referred to in paragraph (1)(a), 12 months after the day on which they are created; and
  - **(b)** in the case of the records referred to in paragraph (1)(b), 24 months after the day on which they are created.
- **(3)** Every owner of a remotely piloted aircraft system who transfers ownership of the system to another person shall, at the time of transfer, also deliver to that person all of the records referred to in paragraph (1)(b).

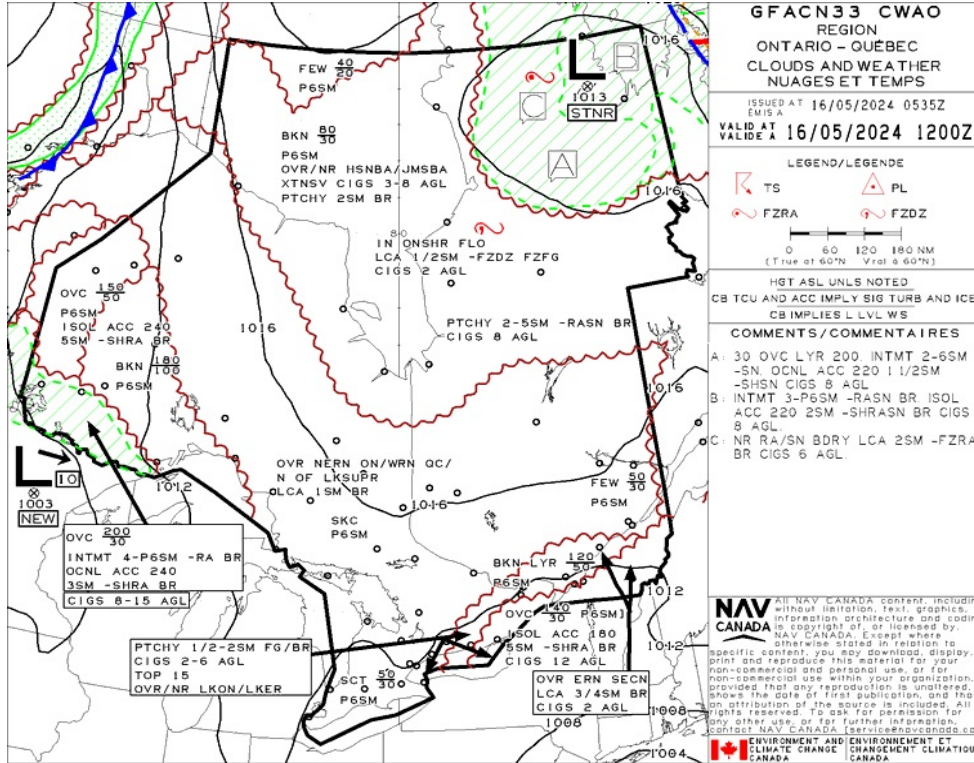
## GFA Issue time + 00 hr - CLOUDS AND WEATHER



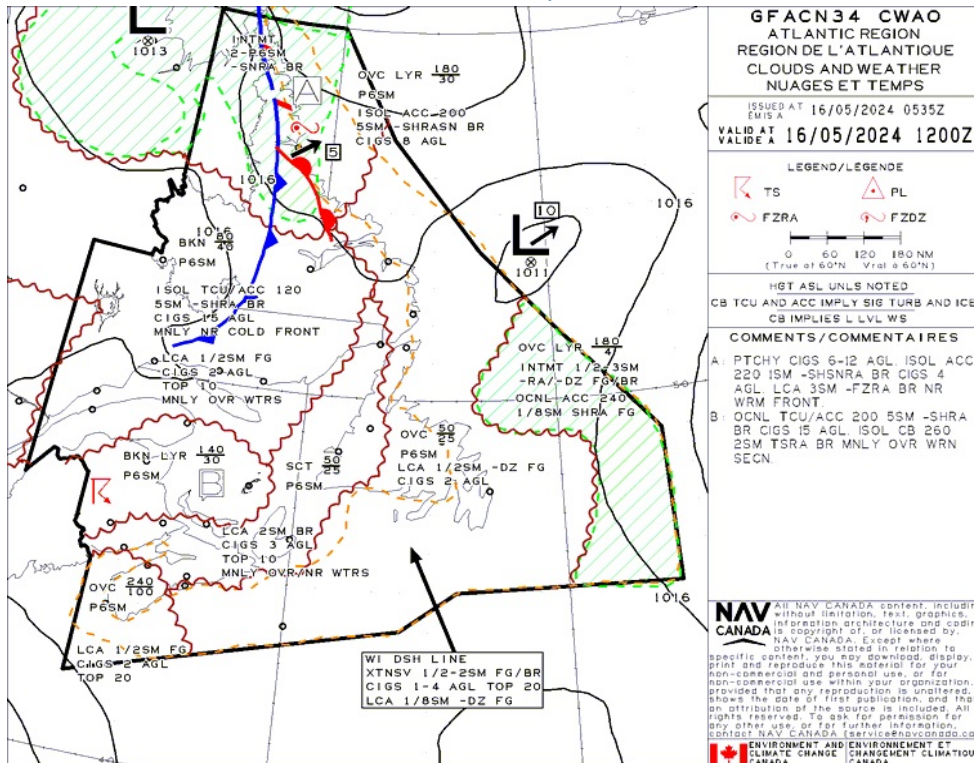
## GFA Issue time + 00 hr - TURBULENCE, ICING AND FREEZING LEVEL



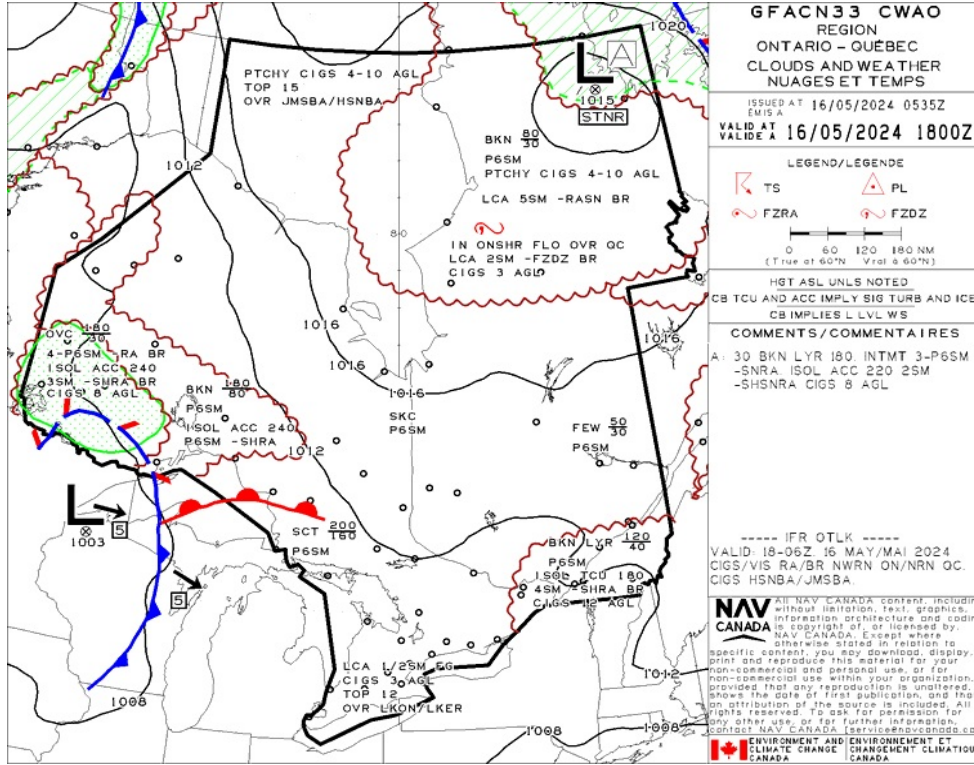
## GFA Issue time + 06 hr - CLOUDS AND WEATHER



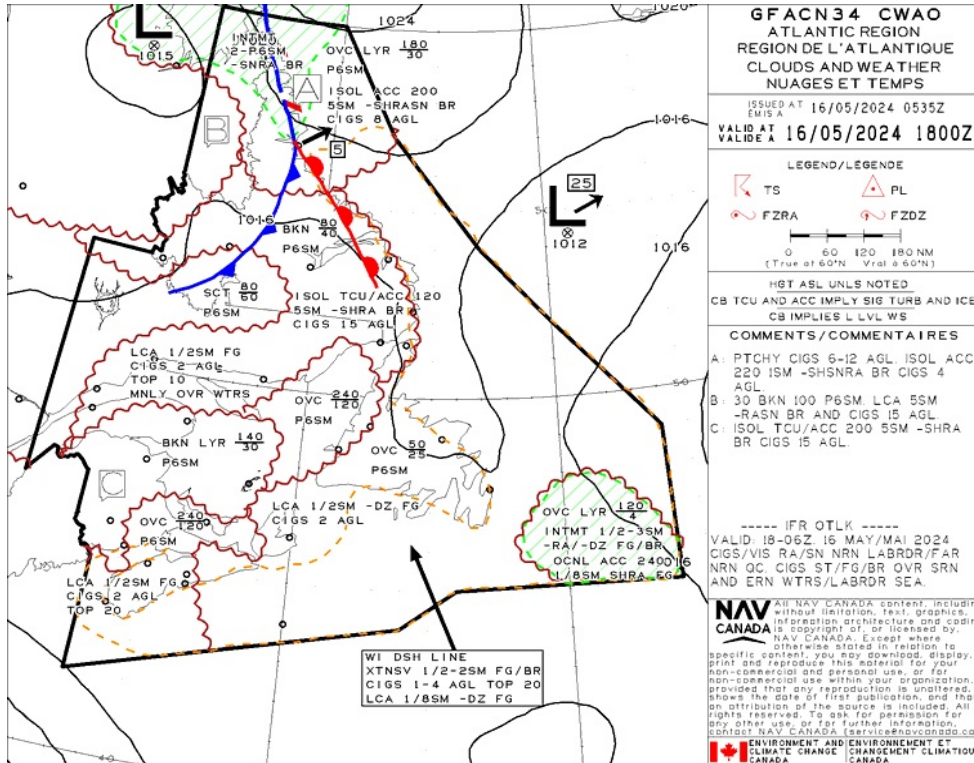
## GFA Issue time + 06 hr - TURBULENCE, ICING AND FREEZING LEVEL



## GFA Issue time + 12 hr - CLOUDS AND WEATHER



## GFA Issue time + 12 hr - TURBULENCE, ICING AND FREEZING LEVEL



## MONTREAL (BELL) - CSW5 - Reg

### NOTAM

(H1034/24 NOTAMN

Q) CZUL/QARCH/IV/BO/E/000/999/5440N06941W999

A) CZUL B) 2403210901 C) 2405162359

E) MANDATORY IFR ROUTES:

DELETE: CYHU H AND L DEP TO KBOS RNAV VIRKA ENE V167 SCUPP

DELETE: CYMX H AND L DEP TO KBOS RNAV VIRKA ENE V167 SCUPP

DELETE: CYUL H AND L DEP TO KBOS RNAV VIRKA ENE V167 SCUPP

DELETE: CYQB L DEP TO KBOS NONJET RNAV ROGSA MOBAL CON CON154

KHRIS LWM

DELETE: CYOW H AND L DEP TO KBOS RNAV KODEX EPMOK SAVAL BUGSY

ENE V167 SCUPP

ADD: CYHU H AND L DEP TO KBOS RNAV VIRKA ENE OOSHN ARR

ADD: CYMX H AND L DEP TO KBOS RNAV VIRKA ENE OOSHN ARR

ADD: CYUL H AND L DEP TO KBOS RNAV VIRKA ENE OOSHN ARR

ADD: CYOW H AND L DEP TO KBOS RNAV KODEX EPMOK SSENA BUGSY ENE

OOSHN ARR

FR:

SYSTEME DE ROUTES IFR OBLIGATOIRES:

RETIREZ: CYHU H ET L DEP VERS KBOS RNAV VIRKA ENE V167 SCUPP

RETIREZ: CYMX H ET L DEP VERS KBOS RNAV VIRKA ENE V167 SCUPP

RETIREZ: CYUL H ET L DEP VERS KBOS RNAV VIRKA ENE V167 SCUPP

RETIREZ: CYQB L DEP VERS KBOS NONJET RNAV ROGSA MOBAL CON CON154

KHRIS LWM

RETIREZ: CYOW H ET L DEP VERS KBOS RNAV KODEX EPMOK SAVAL BUGSY

ENE V167 SCUPP

AJOUTEZ: CYHU H ET L DEP VERS KBOS RNAV VIRKA ENE OOSHN ARR

AJOUTEZ: CYMX H ET L DEP VERS KBOS RNAV VIRKA ENE OOSHN ARR

AJOUTEZ: CYUL H ET L DEP VERS KBOS RNAV VIRKA ENE OOSHN ARR

AJOUTEZ: CYOW H ET L DEP VERS KBOS RNAV KODEX EPMOK SSENA BUGSY

ENE OOSHN ARR)

(H4360/23 NOTAMN

Q) CZUL/QAFTT/IV/BO/E/000/999/5440N06941W999

A) CZUL B) 2312201537 C) 2412191600EST

E) TRIGGER NOTAM - AIP SUPPLEMENT 76/23 IN EFFECT - AUTOLAND

PROCEDURES NOT RECOMMENDED IN RUNWAYS NOT COVERED BY ISED'S

DESIGNATED 5G EXCLUSION AND PROTECTION ZONES

FR:

NOTAM DECLENCHEUR - SUPPLEMENT D'AIP 76/23 EN VIGUEUR -

PROCEDURES D'ATERRISSAGE AUTOMATIQUE NON RECOMMANDEES SUR LES

PISTES QUI NE FIGURENT PAS DANS UNE ZONE DESIGNEE D'EXCLUSION ET

DE PROTECTION 5G DE L'ISDE)

(E2180/24 NOTAMR E2083/24

Q) CZUL/QPIAU/IV/NBO/A/000/999/4541N07402W005

A) CYMX B) 2404151707 C) 2407161200

E) DUE RWY 11/29 CLSD

RNAV (GNSS) RWY 11, RNAV (GNSS) RWY 29 AND VOR/DME RWY 11 APCH:

ALL MINIMA: NOT AUTH EXC FOR TRAINING FLT. TRAINING FLT MUST

INITIATE MISSED APCH PROC AT OR ABV MDA OR DA.

FR:

EN RAISON DE LA PISTE 11/29 CLSD

APCH RNAV (GNSS) PISTE 11, RNAV (GNSS) PISTE 29 ET VOR/DME PISTE

11: TOUS LES MINIMUMS : NON AUTH EXC LES VOLS D'ENTRAINEMENT. LES

VOLS D'ENTRAINEMENT DOIVENT INITIER LA PROC D'APCH INTERROMPUE A

OU AU-DESSUS DE LA MDA OU LA DA.)

(E2182/24 NOTAMR E0287/24

Q) CZUL/QLAAS/IV/NBO/A/000/999/4541N07402W005

A) CYMX B) 2404151546 C) 2407161200

E) ALS 11 AND 29 U/S. APPLY PROC FOR HIGH INTST APCH LGT INOPERATIVE

(AIP AD 2.22.4).

FR:

ALS 11 ET 29 U/S. APPLIQUER LA PROC POUR LGT APCH DE HAUTE INTST

NON OPERATIONNEL (AIP AD 2.22.4).)

(H4366/23 NOTAMN

Q) CZXX/QADTT/IV/BO/E/000/999/5243N05321W999

A) CZUL CZQM CZQX B) 2312202144 C) 2412191600EST

E) TRIGGER NOTAM - AIP SUPPLEMENT 26/18 IN EFFECT. ADJUSTMENT TO THE

CANADA AIR DEFENCE IDENTIFICATION ZONE (ADIZ).

FR:

NOTAM DECLENCHEUR - SUPPLEMENT D'AIP 26/18 EN VIGUEUR.

MODIFICATION DE LA ZONE D'IDENTIFICATION DE DEFENSE AERIENNE DU

CANADA)

(H1804/24 NOTAMN

Q) CZUL/QARCH/IV/BO/E/000/999/5440N06941W999

A) CZUL B) 2505160901 C) PERM

E) AMEND PUBLICATIONS: AMEND MANDATORY IFR ROUTES:

DELETE: CYOW H AND L DEP TO KBOS RNAV KODEX EPMOK SSENA BUGSY

OOSHN ARR

ADD: CYOW H AND L DEP TO KBOS RNAV KODEX EPMOK SSENA BUGSY ENE

OOSHN ARR

FR:

MODIFIEZ PUBLICATIONS: SYSTEME DE ROUTES IFR OBLIGATOIRES:  
RETIRER: CYOW H ET L DEP VERS KBOS RNAV KODEX EPMOK SSENA BUGSY  
OOSHN ARR  
AJOUTEZ: CYOW H ET L DEP VERS KBOS RNAV KODEX EPMOK SSENA BUGSY  
ENE OOSHN ARR)

(E2611/24 NOTAMR E2597/24  
Q) CZUL/QMLC/IV/NBO/A/000/999/4541N07402W005  
A) CYMX B) 2405091900 C) 2407161200  
E) RWY 11/29 CLSD DUE NO MAINT.

FR:  
RWY 11/29 CLSD CAUSE PAS D'ENTRETIEN.)

(V0519/24 NOTAMN  
Q) CZUL/QOLAS/IV/M/AE/000/004/4541N07356W005  
A) CYMX B) 2405042038 C) 2408022359  
E) OBST LGT U/S TOWER 454037N 0735613W (APRX 4.3NM ESE AD) 120FT  
AGL, 341FT AMSL.

FR:  
OBST LGT U/S TOUR 454037N 0735613W (APRX 4.3NM ESE AD) 120FT AGL,  
341FT AMSL.)

(E2699/24 NOTAMN  
Q) CZUL/QMLC/IV/M/A/000/999/4541N07402W005  
A) CYMX B) 2405151100 C) 2405162200  
D) DAILY 1100-2200  
E) TWY E,  
TWY I BTN MIRAJET AND TWY K CLSD.

FR:  
TWY E,  
TWY I BTN MIRAJET ET TWY K CLSD.)

(E2612/24 NOTAMR E2599/24  
Q) CZUL/QMLC/IV/M/A/000/999/4541N07402W005  
A) CYMX B) 2405091900 C) 2407161200  
E) TWY A BTN TWY A5 AND TWY F CLSD.

FR:  
TWY A BTN TWY A5 ET TWY F CLSD.)

(E2643/24 NOTAMR E2618/24  
Q) CZUL/QMLC/IV/M/A/000/999/4541N07402W005  
A) CYMX B) 2405130900 C) 2405242359  
D) MAY 13-17 20-24 0900-2359  
E) TWY A BTN TWY AL AND THR 11 CLSD.

FR:  
TWY A BTN TWY AL ET THR 11 CLSD.)

(H1259/24 NOTAMR H0064/24  
Q) CZXX/QOEXX/IV/NBO/E/000/999/5243N05321W999  
A) CZUL CZQX CZQM B) 2404081701 C) 2407041700EST  
E) AIRSPACE SECURITY WARNING ISSUED BY THE DEPARTMENT OF TRANSPORT  
IN RESPONSE TO THE SECURITY SITUATION IN LEBANON. CANADIAN AIR  
OPERATORS AND OWNERS OF ACFT REGISTERED IN CANADA ARE ADVISED TO  
TAKE ALL POTENTIAL RISK INFO INTO ACCOUNT IN THEIR RISK  
ASSESSMENT AND ROUTING DECISIONS WHEN OPERATING IN LEBANESE  
AIRSPACE AND FIR BEIRUT (OLBB) DUE TO POTENTIAL RISK TO AVIATION  
FROM MIL ACT.

FR:  
AVERTISSEMENT RELATIF A LA SECURITE DE L'ESPACE AERIEN EMIS PAR  
LE MINISTERE DES TRANSPORTS EN REPONSE A LA SITUATION DE SECURITE  
EN LIBAN. ON RECOMMANDE AUX EXPLOITANTS AERIENS CANADIENS ET  
PROPRIETAIRES D'AVIONS IMMATRICULES AU CANADA DE PRENDRE EN  
COMPTE TOUTES LES INFO SUR LES RISQUES POTENTIELS DANS LEUR  
EVALUATION DES RISQUES ET LEURS DECISIONS D'ITINERAIRE LORSQU'ILS  
OPERENT DANS L'ESPACE AERIEN LIBANAIS ET LA REGION D'INFORMATION  
DE VOL DE BEYROUTH (OLBB), EN RAISON DU RISQUE POTENTIEL POUR  
L'AVIATION LIE A L'ACT MIL)

(H1042/24 NOTAMR H0265/24  
Q) CZUL/Q0BTT/IV/BO/E/000/005/4528N07344W031  
A) CZUL B) 2403211104 C) 2412191600EST  
E) TRIGGER NOTAM - AIP SUPPLEMENT 19/24 IN EFFECT.  
CRANES ERECTED WITHIN 30NM OF MONTREAL/PIERRE ELLIOTT  
TRUDEAU INTL AIRPORT

FR:  
NOTAM DECLENCHEUR - SUPPLEMENT D'AIP 19/24 EN VIGUEUR.  
GRUES SITUEES DANS UN RAYON DE 30 NM DE L'AEROPORT INTL  
PIERRE-ELLIOTT-TRUDEAU DE MONTREAL)

(E2614/24 NOTAMR E2598/24  
Q) CZUL/QMLC/IV/M/A/000/999/4541N07402W005  
A) CYMX B) 2405091900 C) 2407161200  
E) TWY A5 CLSD.

FR:  
TWY A5 CLSD.)

(E2555/24 NOTAMR E2183/24  
Q) CZUL/QMLC/IV/M/A/000/999/4541N07402W005  
A) CYMX B) 2405071245 C) 2407161200  
E) TWY A6 CLSD.

FR:  
TWY A6 CLSD.)

(E2192/24 NOTAMR E0284/24  
Q) CZUL/QLEAS/I/BO/A/000/999/4541N07402W005  
A) CYMX B) 2404151858 C) 2407161200  
E) REDL 11/29 U/S

FR:  
REDL 11/29 U/S)

(E2181/24 NOTAMR E0288/24  
Q) CZUL/QLYAS/IV/M/A/000/999/4541N07402W005  
A) CYMX B) 2404151543 C) 2407161200  
E) TWY A5 AND A6 EDGE LGT U/S

FR:  
LGT BORD TWY A5 ET A6 U/S)

(E2758/24 NOTAMN

Q) CZUL/QFAXX/IV/NBO/A/000/999/4541N07402W005  
A) CYMX B) 2405160901 C) PERM  
E) AMEND CANADA AIR PILOT (CAP): AERODROME CHART, PARKING AREAS:  
DELETE RESTRICTIONS: TWY I EASTBOUND ONLY. TWY J WESTBOUND ONLY.  
LOW VISIBILITY PROCEDURES: DELETE: TAXIWAY I IS USED FOR  
EASTBOUND TRAFFIC AS PUBLISHED IN THE CFS.  
DELETE: TAXIWAY J IS USED FOR WESTBOUND TRAFFIC AS PUBLISHED  
IN THE CFS

FR:  
MODIFIEZ CANADA AIR PILOT (CAP): CARTE D'AERODROME,  
AIRES DE STATIONNEMENT: RETIREZ RESTRICTIONS: TWY I  
DIRECTION E SEULEMENT. TWY J DIRECTION W SEULEMENT.  
PROCEDURES EN CONDITIONS DE FAIBLE VISIBILITE: RETIREZ:  
LA VOIE DE CIRCULATION I EST UTILISEE PAR LE  
TRAFFIC EN DIRECTION EST TEL QUE PUBLIE AU CFS.  
RETIREZ: LA VOIE DE CIRCULATION J EST UTILISEE EN DIRECTION  
OUEST TEL QUE PUBLIE AU CFS.)

(V0516/24 NOTAMN  
Q) CZUL/QOLAS/IV/M/AE/000/004/4541N07356W005  
A) CYMX B) 2405040046 C) 2408012359  
E) OBST LGT U/S TOWER 454038N 0735614W (APRX 4.3NM ESE AD) 121FT  
AGL, 342FT AMSL.

FR:  
OBST LGT U/S TOUR 454038N 0735614W (APRX 4.3NM ESE AD) 121FT AGL,  
342FT AMSL.)

(H1097/24 NOTAMN  
Q) CZUL/QARCH/IV/B0/E/000/999/5440N06941W999  
A) CZUL B) 2403271922 C) PERM  
E) AMEND PUBLICATIONS: AMEND MANDATORY IFR ROUTES:  
DELETE: E-BOUND L OLABA RNAV OLABA T791 ALONI DAVDA SSENA TALNO  
T721 TOXAL  
ADD: E-BOUND L OLABA RNAV OLABA T739 EPTUL T721 TOXAL

FR:  
MODIFIEZ PUBLICATIONS: SYSTEME DE ROUTES IFR OBLIGATOIRES:  
RETIRER: DIRECTION E L OLABA RNAV OLABA T791 ALONI DAVDA SSENA  
TALNO T721 TOXAL  
AJOUTEZ: DIRECTION E L OLABA RNAV OLABA T739 EPTUL T721 TOXAL)

(E2753/24 NOTAMN  
Q) CZUL/QMXLC/IV/M/A/000/999/4541N07402W005  
A) CYMX B) 2405171100 C) 2405172200  
E) TWY J BTN TWY E AND TWY K CLSD.

FR:  
TWY J BTN TWY E ET TWY K CLSD.)

(H1599/24 NOTAMR H1514/24  
Q) CZUL/QCAAS/IV/B/AE/000/999/4541N07402W070  
A) CYMX B) 2405021117 C) 2406062359  
E) MIRABEL EMERG FREQ 243.0MHZ U/S

FR:  
MIRABEL EMERG FREQ 243.0MHZ U/S)

## MONTREAL INTL (MIRABEL) - CYMX - Cert

### NOTAM

(H1034/24 NOTAMN

Q) CZUL/QARCH/IV/BO/E/000/999/5440N06941W999

A) CZUL B) 2403210901 C) 2405162359

E) MANDATORY IFR ROUTES:

DELETE: CYHU H AND L DEP TO KBOS RNAV VIRKA ENE V167 SCUPP

DELETE: CYMX H AND L DEP TO KBOS RNAV VIRKA ENE V167 SCUPP

DELETE: CYUL H AND L DEP TO KBOS RNAV VIRKA ENE V167 SCUPP

DELETE: CYQB L DEP TO KBOS NONJET RNAV ROGSA MOBAL CON CON154

KHRIS LWM

DELETE: CYOW H AND L DEP TO KBOS RNAV KODEX EPMOK SAVAL BUGSY

ENE V167 SCUPP

ADD: CYHU H AND L DEP TO KBOS RNAV VIRKA ENE OOSHN ARR

ADD: CYMX H AND L DEP TO KBOS RNAV VIRKA ENE OOSHN ARR

ADD: CYUL H AND L DEP TO KBOS RNAV VIRKA ENE OOSHN ARR

ADD: CYOW H AND L DEP TO KBOS RNAV KODEX EPMOK SSENA BUGSY ENE

OOSHN ARR

FR:

SYSTEME DE ROUTES IFR OBLIGATOIRES:

RETIREZ: CYHU H ET L DEP VERS KBOS RNAV VIRKA ENE V167 SCUPP

RETIREZ: CYMX H ET L DEP VERS KBOS RNAV VIRKA ENE V167 SCUPP

RETIREZ: CYUL H ET L DEP VERS KBOS RNAV VIRKA ENE V167 SCUPP

RETIREZ: CYQB L DEP VERS KBOS NONJET RNAV ROGSA MOBAL CON CON154

KHRIS LWM

RETIREZ: CYOW H ET L DEP VERS KBOS RNAV KODEX EPMOK SAVAL BUGSY

ENE V167 SCUPP

AJOUTEZ: CYHU H ET L DEP VERS KBOS RNAV VIRKA ENE OOSHN ARR

AJOUTEZ: CYMX H ET L DEP VERS KBOS RNAV VIRKA ENE OOSHN ARR

AJOUTEZ: CYUL H ET L DEP VERS KBOS RNAV VIRKA ENE OOSHN ARR

AJOUTEZ: CYOW H ET L DEP VERS KBOS RNAV KODEX EPMOK SSENA BUGSY

ENE OOSHN ARR)

(H4360/23 NOTAMN

Q) CZUL/QAFTT/IV/BO/E/000/999/5440N06941W999

A) CZUL B) 2312201537 C) 2412191600EST

E) TRIGGER NOTAM - AIP SUPPLEMENT 76/23 IN EFFECT - AUTOLAND

PROCEDURES NOT RECOMMENDED IN RUNWAYS NOT COVERED BY ISED'S

DESIGNATED 5G EXCLUSION AND PROTECTION ZONES

FR:

NOTAM DECLENCHEUR - SUPPLEMENT D'AIP 76/23 EN VIGUEUR -

PROCEDURES D'ATERRISSAGE AUTOMATIQUE NON RECOMMANDEES SUR LES

PISTES QUI NE FIGURENT PAS DANS UNE ZONE DESIGNEE D'EXCLUSION ET

DE PROTECTION 5G DE L'ISDE)

(E2180/24 NOTAMR E2083/24

Q) CZUL/QPIAU/IV/NBO/A/000/999/4541N07402W005

A) CYMX B) 2404151707 C) 2407161200

E) DUE RWY 11/29 CLSD

RNAV (GNSS) RWY 11, RNAV (GNSS) RWY 29 AND VOR/DME RWY 11 APCH:

ALL MINIMA: NOT AUTH EXC FOR TRAINING FLT. TRAINING FLT MUST

INITIATE MISSED APCH PROC AT OR ABV MDA OR DA.

FR:

EN RAISON DE LA PISTE 11/29 CLSD

APCH RNAV (GNSS) PISTE 11, RNAV (GNSS) PISTE 29 ET VOR/DME PISTE

11: TOUS LES MINIMUMS : NON AUTH EXC LES VOLS D'ENTRAINEMENT. LES

VOLS D'ENTRAINEMENT DOIVENT INITIER LA PROC D'APCH INTERROMPUE A

OU AU-DESSUS DE LA MDA OU LA DA.)

(E2182/24 NOTAMR E0287/24

Q) CZUL/QLAAS/IV/NBO/A/000/999/4541N07402W005

A) CYMX B) 2404151546 C) 2407161200

E) ALS 11 AND 29 U/S. APPLY PROC FOR HIGH INTST APCH LGT INOPERATIVE

(AIP AD 2.22.4).

FR:

ALS 11 ET 29 U/S. APPLIQUER LA PROC POUR LGT APCH DE HAUTE INTST

NON OPERATIONNEL (AIP AD 2.22.4).)

(H4366/23 NOTAMN

Q) CZXX/QADTT/IV/BO/E/000/999/5243N05321W999

A) CZUL CZQM CZQX B) 2312202144 C) 2412191600EST

E) TRIGGER NOTAM - AIP SUPPLEMENT 26/18 IN EFFECT. ADJUSTMENT TO THE

CANADA AIR DEFENCE IDENTIFICATION ZONE (ADIZ).

FR:

NOTAM DECLENCHEUR - SUPPLEMENT D'AIP 26/18 EN VIGUEUR.

MODIFICATION DE LA ZONE D'IDENTIFICATION DE DEFENSE AERIENNE DU

CANADA)

(H1804/24 NOTAMN

Q) CZUL/QARCH/IV/BO/E/000/999/5440N06941W999

A) CZUL B) 2505160901 C) PERM

E) AMEND PUBLICATIONS: AMEND MANDATORY IFR ROUTES:

DELETE: CYOW H AND L DEP TO KBOS RNAV KODEX EPMOK SSENA BUGSY

OOSHN ARR

ADD: CYOW H AND L DEP TO KBOS RNAV KODEX EPMOK SSENA BUGSY ENE

OOSHN ARR

FR:

MODIFIEZ PUBLICATIONS: SYSTEME DE ROUTES IFR OBLIGATOIRES:  
RETIRER: CYOW H ET L DEP VERS KBOS RNAV KODEX EPMOK SSENA BUGSY  
OOSHN ARR  
AJOUTEZ: CYOW H ET L DEP VERS KBOS RNAV KODEX EPMOK SSENA BUGSY  
ENE OOSHN ARR)

(E2611/24 NOTAMR E2597/24  
Q) CZUL/QMLC/IV/NBO/A/000/999/4541N07402W005  
A) CYMX B) 2405091900 C) 2407161200  
E) RWY 11/29 CLSD DUE NO MAINT.

FR:  
RWY 11/29 CLSD CAUSE PAS D'ENTRETIEN.)

(V0519/24 NOTAMN  
Q) CZUL/QOLAS/IV/M/AE/000/004/4541N07356W005  
A) CYMX B) 2405042038 C) 2408022359  
E) OBST LGT U/S TOWER 454037N 0735613W (APRX 4.3NM ESE AD) 120FT  
AGL, 341FT AMSL.

FR:  
OBST LGT U/S TOUR 454037N 0735613W (APRX 4.3NM ESE AD) 120FT AGL,  
341FT AMSL.)

(E2699/24 NOTAMN  
Q) CZUL/QMLC/IV/M/A/000/999/4541N07402W005  
A) CYMX B) 2405151100 C) 2405162200  
D) DAILY 1100-2200  
E) TWY E,  
TWY I BTN MIRAJET AND TWY K CLSD.

FR:  
TWY E,  
TWY I BTN MIRAJET ET TWY K CLSD.)

(E2612/24 NOTAMR E2599/24  
Q) CZUL/QMLC/IV/M/A/000/999/4541N07402W005  
A) CYMX B) 2405091900 C) 2407161200  
E) TWY A BTN TWY A5 AND TWY F CLSD.

FR:  
TWY A BTN TWY A5 ET TWY F CLSD.)

(E2643/24 NOTAMR E2618/24  
Q) CZUL/QMLC/IV/M/A/000/999/4541N07402W005  
A) CYMX B) 2405130900 C) 2405242359  
D) MAY 13-17 20-24 0900-2359  
E) TWY A BTN TWY AL AND THR 11 CLSD.

FR:  
TWY A BTN TWY AL ET THR 11 CLSD.)

(H1259/24 NOTAMR H0064/24  
Q) CZXX/QOEXX/IV/NBO/E/000/999/5243N05321W999  
A) CZUL CZQX CZQM B) 2404081701 C) 2407041700EST  
E) AIRSPACE SECURITY WARNING ISSUED BY THE DEPARTMENT OF TRANSPORT  
IN RESPONSE TO THE SECURITY SITUATION IN LEBANON. CANADIAN AIR  
OPERATORS AND OWNERS OF ACFT REGISTERED IN CANADA ARE ADVISED TO  
TAKE ALL POTENTIAL RISK INFO INTO ACCOUNT IN THEIR RISK  
ASSESSMENT AND ROUTING DECISIONS WHEN OPERATING IN LEBANESE  
AIRSPACE AND FIR BEIRUT (OLBB) DUE TO POTENTIAL RISK TO AVIATION  
FROM MIL ACT.

FR:  
AVERTISSEMENT RELATIF A LA SECURITE DE L'ESPACE AERIEN EMIS PAR  
LE MINISTERE DES TRANSPORTS EN REPONSE A LA SITUATION DE SECURITE  
EN LIBAN. ON RECOMMANDE AUX EXPLOITANTS AERIENS CANADIENS ET  
PROPRIETAIRES D'AVIONS IMMATRICULES AU CANADA DE PRENDRE EN  
COMPTE TOUTES LES INFO SUR LES RISQUES POTENTIELS DANS LEUR  
EVALUATION DES RISQUES ET LEURS DECISIONS D'ITINERAIRE LORSQU'ILS  
OPERENT DANS L'ESPACE AERIEN LIBANAIS ET LA REGION D'INFORMATION  
DE VOL DE BEYROUTH (OLBB), EN RAISON DU RISQUE POTENTIEL POUR  
L'AVIATION LIE A L'ACT MIL)

(H1042/24 NOTAMR H0265/24  
Q) CZUL/Q0BTT/IV/BO/E/000/005/4528N07344W031  
A) CZUL B) 2403211104 C) 2412191600EST  
E) TRIGGER NOTAM - AIP SUPPLEMENT 19/24 IN EFFECT.  
CRANES ERECTED WITHIN 30NM OF MONTREAL/PIERRE ELLIOTT  
TRUDEAU INTL AIRPORT

FR:  
NOTAM DECLENCHEUR - SUPPLEMENT D'AIP 19/24 EN VIGUEUR.  
GRUES SITUEES DANS UN RAYON DE 30 NM DE L'AEROPORT INTL  
PIERRE-ELLIOTT-TRUDEAU DE MONTREAL)

(E2614/24 NOTAMR E2598/24  
Q) CZUL/QMLC/IV/M/A/000/999/4541N07402W005  
A) CYMX B) 2405091900 C) 2407161200  
E) TWY A5 CLSD.

FR:  
TWY A5 CLSD.)

(E2555/24 NOTAMR E2183/24  
Q) CZUL/QMLC/IV/M/A/000/999/4541N07402W005  
A) CYMX B) 2405071245 C) 2407161200  
E) TWY A6 CLSD.

FR:  
TWY A6 CLSD.)

(E2192/24 NOTAMR E0284/24  
Q) CZUL/QLEAS/I/BO/A/000/999/4541N07402W005  
A) CYMX B) 2404151858 C) 2407161200  
E) REDL 11/29 U/S

FR:  
REDL 11/29 U/S)

(E2181/24 NOTAMR E0288/24  
Q) CZUL/QLYAS/IV/M/A/000/999/4541N07402W005  
A) CYMX B) 2404151543 C) 2407161200  
E) TWY A5 AND A6 EDGE LGT U/S

FR:  
LGT BORD TWY A5 ET A6 U/S)

(E2758/24 NOTAMN

Q) CZUL/QFAXX/IV/NBO/A/000/999/4541N07402W005  
A) CYMX B) 2405160901 C) PERM  
E) AMEND CANADA AIR PILOT (CAP): AERODROME CHART, PARKING AREAS:  
DELETE RESTRICTIONS: TWY I EASTBOUND ONLY. TWY J WESTBOUND ONLY.  
LOW VISIBILITY PROCEDURES: DELETE: TAXIWAY I IS USED FOR  
EASTBOUND TRAFFIC AS PUBLISHED IN THE CFS.  
DELETE: TAXIWAY J IS USED FOR WESTBOUND TRAFFIC AS PUBLISHED  
IN THE CFS

FR:  
MODIFIEZ CANADA AIR PILOT (CAP): CARTE D'AERODROME,  
AIRES DE STATIONNEMENT: RETIREZ RESTRICTIONS: TWY I  
DIRECTION E SEULEMENT. TWY J DIRECTION W SEULEMENT.  
PROCEDURES EN CONDITIONS DE FAIBLE VISIBILITE: RETIREZ:  
LA VOIE DE CIRCULATION I EST UTILISEE PAR LE  
TRAFFIC EN DIRECTION EST TEL QUE PUBLIE AU CFS.  
RETIREZ: LA VOIE DE CIRCULATION J EST UTILISEE EN DIRECTION  
OUEST TEL QUE PUBLIE AU CFS.)

(V0516/24 NOTAMN  
Q) CZUL/QOLAS/IV/M/AE/000/004/4541N07356W005  
A) CYMX B) 2405040046 C) 2408012359  
E) OBST LGT U/S TOWER 454038N 0735614W (APRX 4.3NM ESE AD) 121FT  
AGL, 342FT AMSL.

FR:  
OBST LGT U/S TOUR 454038N 0735614W (APRX 4.3NM ESE AD) 121FT AGL,  
342FT AMSL.)

(H1097/24 NOTAMN  
Q) CZUL/QARCH/IV/B0/E/000/999/5440N06941W999  
A) CZUL B) 2403271922 C) PERM  
E) AMEND PUBLICATIONS: AMEND MANDATORY IFR ROUTES:  
DELETE: E-BOUND L OLABA RNAV OLABA T791 ALONI DAVDA SSENA TALNO  
T721 TOXAL  
ADD: E-BOUND L OLABA RNAV OLABA T739 EPTUL T721 TOXAL

FR:  
MODIFIEZ PUBLICATIONS: SYSTEME DE ROUTES IFR OBLIGATOIRES:  
RETIRER: DIRECTION E L OLABA RNAV OLABA T791 ALONI DAVDA SSENA  
TALNO T721 TOXAL  
AJOUTEZ: DIRECTION E L OLABA RNAV OLABA T739 EPTUL T721 TOXAL)

(E2753/24 NOTAMN  
Q) CZUL/QMXLC/IV/M/A/000/999/4541N07402W005  
A) CYMX B) 2405171100 C) 2405172200  
E) TWY J BTN TWY E AND TWY K CLSD.

FR:  
TWY J BTN TWY E ET TWY K CLSD.)

(H1599/24 NOTAMR H1514/24  
Q) CZUL/QCAAS/IV/B/AE/000/999/4541N07402W070  
A) CYMX B) 2405021117 C) 2406062359  
E) MIRABEL EMERG FREQ 243.0MHZ U/S

FR:  
MIRABEL EMERG FREQ 243.0MHZ U/S)

## MIRABEL HELICO - CMH4 - Reg

### NOTAM

(H1034/24 NOTAMN

Q) CZUL/QARCH/IV/BO/E/000/999/5440N06941W999

A) CZUL B) 2403210901 C) 2405162359

E) MANDATORY IFR ROUTES:

DELETE: CYHU H AND L DEP TO KBOS RNAV VIRKA ENE V167 SCUPP

DELETE: CYMX H AND L DEP TO KBOS RNAV VIRKA ENE V167 SCUPP

DELETE: CYUL H AND L DEP TO KBOS RNAV VIRKA ENE V167 SCUPP

DELETE: CYQB L DEP TO KBOS NONJET RNAV ROGSA MOBAL CON CON154

KHRIS LWM

DELETE: CYOW H AND L DEP TO KBOS RNAV KODEX EPMOK SAVAL BUGSY

ENE V167 SCUPP

ADD: CYHU H AND L DEP TO KBOS RNAV VIRKA ENE OOSHN ARR

ADD: CYMX H AND L DEP TO KBOS RNAV VIRKA ENE OOSHN ARR

ADD: CYUL H AND L DEP TO KBOS RNAV VIRKA ENE OOSHN ARR

ADD: CYOW H AND L DEP TO KBOS RNAV KODEX EPMOK SSENA BUGSY ENE

OOSHN ARR

FR:

SYSTEME DE ROUTES IFR OBLIGATOIRES:

RETIREZ: CYHU H ET L DEP VERS KBOS RNAV VIRKA ENE V167 SCUPP

RETIREZ: CYMX H ET L DEP VERS KBOS RNAV VIRKA ENE V167 SCUPP

RETIREZ: CYUL H ET L DEP VERS KBOS RNAV VIRKA ENE V167 SCUPP

RETIREZ: CYQB L DEP VERS KBOS NONJET RNAV ROGSA MOBAL CON CON154

KHRIS LWM

RETIREZ: CYOW H ET L DEP VERS KBOS RNAV KODEX EPMOK SAVAL BUGSY

ENE V167 SCUPP

AJOUTEZ: CYHU H ET L DEP VERS KBOS RNAV VIRKA ENE OOSHN ARR

AJOUTEZ: CYMX H ET L DEP VERS KBOS RNAV VIRKA ENE OOSHN ARR

AJOUTEZ: CYUL H ET L DEP VERS KBOS RNAV VIRKA ENE OOSHN ARR

AJOUTEZ: CYOW H ET L DEP VERS KBOS RNAV KODEX EPMOK SSENA BUGSY

ENE OOSHN ARR)

(H4360/23 NOTAMN

Q) CZUL/QAFTT/IV/BO/E/000/999/5440N06941W999

A) CZUL B) 2312201537 C) 2412191600EST

E) TRIGGER NOTAM - AIP SUPPLEMENT 76/23 IN EFFECT - AUTOLAND

PROCEDURES NOT RECOMMENDED IN RUNWAYS NOT COVERED BY ISED'S

DESIGNATED 5G EXCLUSION AND PROTECTION ZONES

FR:

NOTAM DECLENCHEUR - SUPPLEMENT D'AIP 76/23 EN VIGUEUR -

PROCEDURES D'ATERRISSAGE AUTOMATIQUE NON RECOMMANDEES SUR LES

PISTES QUI NE FIGURENT PAS DANS UNE ZONE DESIGNEE D'EXCLUSION ET

DE PROTECTION 5G DE L'ISDE)

(E2180/24 NOTAMR E2083/24

Q) CZUL/QPIAU/IV/NBO/A/000/999/4541N07402W005

A) CYMX B) 2404151707 C) 2407161200

E) DUE RWY 11/29 CLSD

RNAV (GNSS) RWY 11, RNAV (GNSS) RWY 29 AND VOR/DME RWY 11 APCH:

ALL MINIMA: NOT AUTH EXC FOR TRAINING FLT. TRAINING FLT MUST

INITIATE MISSED APCH PROC AT OR ABV MDA OR DA.

FR:

EN RAISON DE LA PISTE 11/29 CLSD

APCH RNAV (GNSS) PISTE 11, RNAV (GNSS) PISTE 29 ET VOR/DME PISTE

11: TOUS LES MINIMUMS : NON AUTH EXC LES VOLS D'ENTRAINEMENT. LES

VOLS D'ENTRAINEMENT DOIVENT INITIER LA PROC D'APCH INTERROMPUE A

OU AU-DESSUS DE LA MDA OU LA DA.)

(E2182/24 NOTAMR E0287/24

Q) CZUL/QLAAS/IV/NBO/A/000/999/4541N07402W005

A) CYMX B) 2404151546 C) 2407161200

E) ALS 11 AND 29 U/S. APPLY PROC FOR HIGH INTST APCH LGT INOPERATIVE

(AIP AD 2.22.4).

FR:

ALS 11 ET 29 U/S. APPLIQUER LA PROC POUR LGT APCH DE HAUTE INTST

NON OPERATIONNEL (AIP AD 2.22.4).)

(H4366/23 NOTAMN

Q) CZXX/QADTT/IV/BO/E/000/999/5243N05321W999

A) CZUL CZQM CZQX B) 2312202144 C) 2412191600EST

E) TRIGGER NOTAM - AIP SUPPLEMENT 26/18 IN EFFECT. ADJUSTMENT TO THE

CANADA AIR DEFENCE IDENTIFICATION ZONE (ADIZ).

FR:

NOTAM DECLENCHEUR - SUPPLEMENT D'AIP 26/18 EN VIGUEUR.

MODIFICATION DE LA ZONE D'IDENTIFICATION DE DEFENSE AERIENNE DU

CANADA)

(H1804/24 NOTAMN

Q) CZUL/QARCH/IV/BO/E/000/999/5440N06941W999

A) CZUL B) 2505160901 C) PERM

E) AMEND PUBLICATIONS: AMEND MANDATORY IFR ROUTES:

DELETE: CYOW H AND L DEP TO KBOS RNAV KODEX EPMOK SSENA BUGSY

OOSHN ARR

ADD: CYOW H AND L DEP TO KBOS RNAV KODEX EPMOK SSENA BUGSY ENE

OOSHN ARR

FR:

MODIFIEZ PUBLICATIONS: SYSTEME DE ROUTES IFR OBLIGATOIRES:  
RETIRER: CYOW H ET L DEP VERS KBOS RNAV KODEX EPMOK SSENA BUGSY  
OOSHN ARR  
AJOUTEZ: CYOW H ET L DEP VERS KBOS RNAV KODEX EPMOK SSENA BUGSY  
ENE OOSHN ARR)

(E2611/24 NOTAMR E2597/24  
Q) CZUL/QMLC/IV/NBO/A/000/999/4541N07402W005  
A) CYMX B) 2405091900 C) 2407161200  
E) RWY 11/29 CLSD DUE NO MAINT.

FR:  
RWY 11/29 CLSD CAUSE PAS D'ENTRETIEN.)

(V0519/24 NOTAMN  
Q) CZUL/QOLAS/IV/M/AE/000/004/4541N07356W005  
A) CYMX B) 2405042038 C) 2408022359  
E) OBST LGT U/S TOWER 454037N 0735613W (APRX 4.3NM ESE AD) 120FT  
AGL, 341FT AMSL.

FR:  
OBST LGT U/S TOUR 454037N 0735613W (APRX 4.3NM ESE AD) 120FT AGL,  
341FT AMSL.)

(E2699/24 NOTAMN  
Q) CZUL/QMLC/IV/M/A/000/999/4541N07402W005  
A) CYMX B) 2405151100 C) 2405162200  
D) DAILY 1100-2200  
E) TWY E,  
TWY I BTN MIRAJET AND TWY K CLSD.

FR:  
TWY E,  
TWY I BTN MIRAJET ET TWY K CLSD.)

(E2612/24 NOTAMR E2599/24  
Q) CZUL/QMLC/IV/M/A/000/999/4541N07402W005  
A) CYMX B) 2405091900 C) 2407161200  
E) TWY A BTN TWY A5 AND TWY F CLSD.

FR:  
TWY A BTN TWY A5 ET TWY F CLSD.)

(E2643/24 NOTAMR E2618/24  
Q) CZUL/QMLC/IV/M/A/000/999/4541N07402W005  
A) CYMX B) 2405130900 C) 2405242359  
D) MAY 13-17 20-24 0900-2359  
E) TWY A BTN TWY AL AND THR 11 CLSD.

FR:  
TWY A BTN TWY AL ET THR 11 CLSD.)

(H1259/24 NOTAMR H0064/24  
Q) CZXX/QOEXX/IV/NBO/E/000/999/5243N05321W999  
A) CZUL CZQX CZQM B) 2404081701 C) 2407041700EST  
E) AIRSPACE SECURITY WARNING ISSUED BY THE DEPARTMENT OF TRANSPORT  
IN RESPONSE TO THE SECURITY SITUATION IN LEBANON. CANADIAN AIR  
OPERATORS AND OWNERS OF ACFT REGISTERED IN CANADA ARE ADVISED TO  
TAKE ALL POTENTIAL RISK INFO INTO ACCOUNT IN THEIR RISK  
ASSESSMENT AND ROUTING DECISIONS WHEN OPERATING IN LEBANESE  
AIRSPACE AND FIR BEIRUT (OLBB) DUE TO POTENTIAL RISK TO AVIATION  
FROM MIL ACT.

FR:  
AVERTISSEMENT RELATIF A LA SECURITE DE L'ESPACE AERIEN EMIS PAR  
LE MINISTERE DES TRANSPORTS EN REPONSE A LA SITUATION DE SECURITE  
EN LIBAN. ON RECOMMANDE AUX EXPLOITANTS AERIENS CANADIENS ET  
PROPRIETAIRES D'AVIONS IMMATRICULES AU CANADA DE PRENDRE EN  
COMPTE TOUTES LES INFO SUR LES RISQUES POTENTIELS DANS LEUR  
EVALUATION DES RISQUES ET LEURS DECISIONS D'ITINERAIRE LORSQU'ILS  
OPERENT DANS L'ESPACE AERIEN LIBANAIS ET LA REGION D'INFORMATION  
DE VOL DE BEYROUTH (OLBB), EN RAISON DU RISQUE POTENTIEL POUR  
L'AVIATION LIE A L'ACT MIL)

(H1042/24 NOTAMR H0265/24  
Q) CZUL/Q0BTT/IV/BO/E/000/005/4528N07344W031  
A) CZUL B) 2403211104 C) 2412191600EST  
E) TRIGGER NOTAM - AIP SUPPLEMENT 19/24 IN EFFECT.  
CRANES ERECTED WITHIN 30NM OF MONTREAL/PIERRE ELLIOTT  
TRUDEAU INTL AIRPORT

FR:  
NOTAM DECLENCHEUR - SUPPLEMENT D'AIP 19/24 EN VIGUEUR.  
GRUES SITUEES DANS UN RAYON DE 30 NM DE L'AEROPORT INTL  
PIERRE-ELLIOTT-TRUDEAU DE MONTREAL)

(E2614/24 NOTAMR E2598/24  
Q) CZUL/QMLC/IV/M/A/000/999/4541N07402W005  
A) CYMX B) 2405091900 C) 2407161200  
E) TWY A5 CLSD.

FR:  
TWY A5 CLSD.)

(E2555/24 NOTAMR E2183/24  
Q) CZUL/QMLC/IV/M/A/000/999/4541N07402W005  
A) CYMX B) 2405071245 C) 2407161200  
E) TWY A6 CLSD.

FR:  
TWY A6 CLSD.)

(E2192/24 NOTAMR E0284/24  
Q) CZUL/QLEAS/I/BO/A/000/999/4541N07402W005  
A) CYMX B) 2404151858 C) 2407161200  
E) REDL 11/29 U/S

FR:  
REDL 11/29 U/S)

(E2181/24 NOTAMR E0288/24  
Q) CZUL/QLYAS/IV/M/A/000/999/4541N07402W005  
A) CYMX B) 2404151543 C) 2407161200  
E) TWY A5 AND A6 EDGE LGT U/S

FR:  
LGT BORD TWY A5 ET A6 U/S)

(E2758/24 NOTAMN

Q) CZUL/QFAXX/IV/NBO/A/000/999/4541N07402W005  
A) CYMX B) 2405160901 C) PERM  
E) AMEND CANADA AIR PILOT (CAP): AERODROME CHART, PARKING AREAS:  
DELETE RESTRICTIONS: TWY I EASTBOUND ONLY. TWY J WESTBOUND ONLY.  
LOW VISIBILITY PROCEDURES: DELETE: TAXIWAY I IS USED FOR  
EASTBOUND TRAFFIC AS PUBLISHED IN THE CFS.  
DELETE: TAXIWAY J IS USED FOR WESTBOUND TRAFFIC AS PUBLISHED  
IN THE CFS

FR:  
MODIFIEZ CANADA AIR PILOT (CAP): CARTE D'AERODROME,  
AIRES DE STATIONNEMENT: RETIREZ RESTRICTIONS: TWY I  
DIRECTION E SEULEMENT. TWY J DIRECTION W SEULEMENT.  
PROCEDURES EN CONDITIONS DE FAIBLE VISIBILITE: RETIREZ:  
LA VOIE DE CIRCULATION I EST UTILISEE PAR LE  
TRAFFIC EN DIRECTION EST TEL QUE PUBLIE AU CFS.  
RETIREZ: LA VOIE DE CIRCULATION J EST UTILISEE EN DIRECTION  
OUEST TEL QUE PUBLIE AU CFS.)

(V0516/24 NOTAMN  
Q) CZUL/QOLAS/IV/M/AE/000/004/4541N07356W005  
A) CYMX B) 2405040046 C) 2408012359  
E) OBST LGT U/S TOWER 454038N 0735614W (APRX 4.3NM ESE AD) 121FT  
AGL, 342FT AMSL.

FR:  
OBST LGT U/S TOUR 454038N 0735614W (APRX 4.3NM ESE AD) 121FT AGL,  
342FT AMSL.)

(H1097/24 NOTAMN  
Q) CZUL/QARCH/IV/B0/E/000/999/5440N06941W999  
A) CZUL B) 2403271922 C) PERM  
E) AMEND PUBLICATIONS: AMEND MANDATORY IFR ROUTES:  
DELETE: E-BOUND L OLABA RNAV OLABA T791 ALONI DAVDA SSENA TALNO  
T721 TOXAL  
ADD: E-BOUND L OLABA RNAV OLABA T739 EPTUL T721 TOXAL

FR:  
MODIFIEZ PUBLICATIONS: SYSTEME DE ROUTES IFR OBLIGATOIRES:  
RETIRER: DIRECTION E L OLABA RNAV OLABA T791 ALONI DAVDA SSENA  
TALNO T721 TOXAL  
AJOUTEZ: DIRECTION E L OLABA RNAV OLABA T739 EPTUL T721 TOXAL)

(E2753/24 NOTAMN  
Q) CZUL/QMXLC/IV/M/A/000/999/4541N07402W005  
A) CYMX B) 2405171100 C) 2405172200  
E) TWY J BTN TWY E AND TWY K CLSD.

FR:  
TWY J BTN TWY E ET TWY K CLSD.)

(H1599/24 NOTAMR H1514/24  
Q) CZUL/QCAAS/IV/B/AE/000/999/4541N07402W070  
A) CYMX B) 2405021117 C) 2406062359  
E) MIRABEL EMERG FREQ 243.0MHZ U/S

FR:  
MIRABEL EMERG FREQ 243.0MHZ U/S)

## LAVAL (ARTOPEX PLUS) - CLP2 - Cert

### NOTAM

(H1599/24 NOTAMR H1514/24  
Q) CZUL/QCAAS/IV/B/AE/000/999/4541N07402W070  
A) CYMX B) 2405021117 C) 2406062359  
E) MIRABEL EMERG FREQ 243.0MHZ U/S

FR:  
MIRABEL EMERG FREQ 243.0MHZ U/S)

(V0525/24 NOTAMN  
Q) CZUL/QOLAS/IV/M/AE/000/003/4536N07342W005  
A) CXXX B) 2405060232 C) 2407062359  
E) CLP2 MONTREAL/LAVAL (ARTOPEX PLUS) (HELI)  
OBST LGT U/S TOWER 453537N 0734144W (APRX 2.5NM E AD) 120FT AGL,  
218FT AMSL.

FR:  
CLP2 MONTREAL/LAVAL (ARTOPEX PLUS) (HELI)  
OBST LGT U/S TOUR 453537N 0734144W (APRX 2.5NM E AD) 120FT AGL,  
218FT AMSL.)

(K0620/24 NOTAMR K3766/23  
Q) CZUL/QFPLC/IV/BO/A/000/999/4535N07345W005  
A) CXXX B) 2402281910 C) 2405281800  
E) CLP2 MONTREAL/LAVAL (ARTOPEX PLUS) (HELI)  
HELIPORT CLSD DUE CONST

FR:  
CLP2 MONTREAL/LAVAL (ARTOPEX PLUS) (HELI)  
HELIPORT CLSD CAUSE CONST)

(K1369/24 NOTAMR K0538/24  
Q) CZUL/QFPLC/IV/BO/A/000/999/4532N07343W005  
A) CXXX B) 2405151337 C) 2406060400  
E) CSZ8 MONTREAL (SACRE-COEUR) (HELI)  
HELIPAD CLSD

FR:  
CSZ8 MONTREAL (SACRE-COEUR) (HELI)  
HELIPAD CLSD)

(H1259/24 NOTAMR H0064/24  
Q) CZXX/QOEXX/IV/NBO/E/000/999/5243N05321W999  
A) CZUL CZQX CZQM B) 2404081701 C) 2407041700EST  
E) AIRSPACE SECURITY WARNING ISSUED BY THE DEPARTMENT OF TRANSPORT  
IN RESPONSE TO THE SECURITY SITUATION IN LEBANON. CANADIAN AIR  
OPERATORS AND OWNERS OF ACFT REGISTERED IN CANADA ARE ADVISED TO  
TAKE ALL POTENTIAL RISK INFO INTO ACCOUNT IN THEIR RISK  
ASSESSMENT AND ROUTING DECISIONS WHEN OPERATING IN LEBANESE  
AIRSPACE AND FIR BEIRUT (OLBB) DUE TO POTENTIAL RISK TO AVIATION  
FROM MIL ACT.

FR:  
AVERTISSEMENT RELATIF A LA SECURITE DE L'ESPACE AERIEN EMIS PAR  
LE MINISTERE DES TRANSPORTS EN REPONSE A LA SITUATION DE SECURITE  
EN LIBAN. ON RECOMMANDE AUX EXPLOITANTS AERIENS CANADIENS ET  
PROPRIETAIRES D'AVIONS IMMATRICULES AU CANADA DE PRENDRE EN  
COMPTE TOUTES LES INFO SUR LES RISQUES POTENTIELS DANS LEUR  
EVALUATION DES RISQUES ET LEURS DECISIONS D'ITINERAIRE LORSQU'ILS  
OPERENT DANS L'ESPACE AERIEN LIBANAIS ET LA REGION D'INFORMATION  
DE VOL DE BEYROUTH (OLBB), EN RAISON DU RISQUE POTENTIEL POUR  
L'AVIATION LIE A L'ACT MIL)

(H1042/24 NOTAMR H0265/24  
Q) CZUL/QOBT/IV/BO/E/000/005/4528N07344W031  
A) CZUL B) 2403211104 C) 2412191600EST  
E) TRIGGER NOTAM - AIP SUPPLEMENT 19/24 IN EFFECT.  
CRANES ERECTED WITHIN 30NM OF MONTREAL/PIERRE ELLIOTT  
TRUDEAU INTL AIRPORT

FR:  
NOTAM DECLENCHEUR - SUPPLEMENT D'AIP 19/24 EN VIGUEUR.  
GRUES SITUEES DANS UN RAYON DE 30 NM DE L'AEROPORT INTL  
PIERRE-ELLIOTT-TRUDEAU DE MONTREAL)

(H1034/24 NOTAMN  
Q) CZUL/QARCH/I/BO/E/000/999/5440N06941W999  
A) CZUL B) 2403210901 C) 2405162359  
E) MANDATORY IFR ROUTES:  
DELETE: CYHU H AND L DEP TO KBOS RNAV VIRKA ENE V167 SCUPP  
DELETE: CYMX H AND L DEP TO KBOS RNAV VIRKA ENE V167 SCUPP  
DELETE: CYUL H AND L DEP TO KBOS RNAV VIRKA ENE V167 SCUPP  
DELETE: CYQB L DEP TO KBOS NONJET RNAV ROGSA MOBAL CON CON154  
KHRIS LWM  
DELETE: CYOW H AND L DEP TO KBOS RNAV KODEX EPMOK SAVAL BUGSY  
ENE V167 SCUPP  
ADD: CYHU H AND L DEP TO KBOS RNAV VIRKA ENE OOSH ARR  
ADD: CYMX H AND L DEP TO KBOS RNAV VIRKA ENE OOSH ARR  
ADD: CYUL H AND L DEP TO KBOS RNAV VIRKA ENE OOSH ARR  
ADD: CYOW H AND L DEP TO KBOS RNAV KODEX EPMOK SSENA BUGSY ENE  
OOSH ARR

FR:  
SYSTEME DE ROUTES IFR OBLIGATOIRES:

RETIREZ: CYHU H ET L DEP VERS KBOS RNAV VIRKA ENE V167 SCUPP  
RETIREZ: CYMX H ET L DEP VERS KBOS RNAV VIRKA ENE V167 SCUPP  
RETIREZ: CYUL H ET L DEP VERS KBOS RNAV VIRKA ENE V167 SCUPP  
RETIREZ: CYQB L DEP VERS KBOS NONJET RNAV ROGSA MOBAL CON CON154  
KHRIS LWM  
RETIREZ: CYOW H ET L DEP VERS KBOS RNAV KODEX EPMOK SAVAL BUGSY  
ENE V167 SCUPP  
AJOUTEZ: CYHU H ET L DEP VERS KBOS RNAV VIRKA ENE OOSHN ARR  
AJOUTEZ: CYMX H ET L DEP VERS KBOS RNAV VIRKA ENE OOSHN ARR  
AJOUTEZ: CYUL H ET L DEP VERS KBOS RNAV VIRKA ENE OOSHN ARR  
AJOUTEZ: CYOW H ET L DEP VERS KBOS RNAV KODEX EPMOK SSENA BUGSY  
ENE OOSHN ARR)

(H1830/24 NOTAMR H1797/24  
Q) CZUL/QCAAS/IV/B/AE/000/030/4528N07344W007  
A) CYUL B) 2405141815 C) 2405172359  
E) MONTREAL TWR FREQ 124.3MHZ U/S

FR:  
TWR DE MONTREAL FREQ 124.3MHZ U/S)

(H4360/23 NOTAMN  
Q) CZUL/QAFTT/IV/BO/E/000/999/5440N06941W999  
A) CZUL B) 2312201537 C) 2412191600EST  
E) TRIGGER NOTAM - AIP SUPPLEMENT 76/23 IN EFFECT - AUTOLAND  
PROCEDURES NOT RECOMMENDED IN RUNWAYS NOT COVERED BY ISED'S  
DESIGNATED 5G EXCLUSION AND PROTECTION ZONES

FR:  
NOTAM DECLENCHEUR - SUPPLEMENT D'AIP 76/23 EN VIGUEUR -  
PROCEDURES D'ATTERRISSAGE AUTOMATIQUE NON RECOMMANDEES SUR LES  
PISTES QUI NE FIGURENT PAS DANS UNE ZONE DESIGNEE D'EXCLUSION ET  
DE PROTECTION 5G DE L'ISDE)

(H4366/23 NOTAMN  
Q) CZXX/QADTT/IV/BO/E/000/999/5243N05321W999  
A) CZUL CZQM CZQX B) 2312202144 C) 2412191600EST  
E) TRIGGER NOTAM - AIP SUPPLEMENT 26/18 IN EFFECT. ADJUSTMENT TO THE  
CANADA AIR DEFENCE IDENTIFICATION ZONE (ADIZ).

FR:  
NOTAM DECLENCHEUR - SUPPLEMENT D'AIP 26/18 EN VIGUEUR.  
MODIFICATION DE LA ZONE D'IDENTIFICATION DE DEFENSE AERIENNE DU  
CANADA)

(H1804/24 NOTAMN  
Q) CZUL/QARCH/IV/BO/E/000/999/5440N06941W999  
A) CZUL B) 2505160901 C) PERM  
E) AMEND PUBLICATIONS: AMEND MANDATORY IFR ROUTES:  
DELETE: CYOW H AND L DEP TO KBOS RNAV KODEX EPMOK SSENA BUGSY  
OOSHN ARR  
ADD: CYOW H AND L DEP TO KBOS RNAV KODEX EPMOK SSENA BUGSY ENE  
OOSHN ARR

FR:  
MODIFIEZ PUBLICATIONS: SYSTEME DE ROUTES IFR OBLIGATOIRES:  
RETIRER: CYOW H ET L DEP VERS KBOS RNAV KODEX EPMOK SSENA BUGSY  
OOSHN ARR  
AJOUTEZ: CYOW H ET L DEP VERS KBOS RNAV KODEX EPMOK SSENA BUGSY  
ENE OOSHN ARR)

(H1097/24 NOTAMN  
Q) CZUL/QARCH/IV/BO/E/000/999/5440N06941W999  
A) CZUL B) 2403271922 C) PERM  
E) AMEND PUBLICATIONS: AMEND MANDATORY IFR ROUTES:  
DELETE: E-BOUND L OLABA RNAV OLABA T791 ALONI DAVDA SSENA TALNO  
T721 TOXAL  
ADD: E-BOUND L OLABA RNAV OLABA T739 EPTUL T721 TOXAL

FR:  
MODIFIEZ PUBLICATIONS: SYSTEME DE ROUTES IFR OBLIGATOIRES:  
RETIRER: DIRECTION E L OLABA RNAV OLABA T791 ALONI DAVDA SSENA  
TALNO T721 TOXAL  
AJOUTEZ: DIRECTION E L OLABA RNAV OLABA T739 EPTUL T721 TOXAL)



## ST-JEROME (HYDRO-QUEBEC) - CSZ6 - Cert

### NOTAM

(K1232/24 NOTAMR K1229/24  
Q) CZUL/QFPLC/IV/BO/A/000/999/4546N07402W005  
A) CXXX B) 2404291230 C) 2405211000  
E) CSZ6 ST-JEROME (HYDRO-QUEBEC) (HELI)  
HELIPORT CLSD DUE CONST

FR:  
CSZ6 ST-JEROME (HYDRO-QUEBEC) (HELI)  
HELIPORT CLSD CAUSE CONST)

(H1259/24 NOTAMR H0064/24  
Q) CZXX/QOEXX/IV/NBO/E/000/999/5243N05321W999  
A) CZUL CZQX CZQM B) 2404081701 C) 2407041700EST  
E) AIRSPACE SECURITY WARNING ISSUED BY THE DEPARTMENT OF TRANSPORT  
IN RESPONSE TO THE SECURITY SITUATION IN LEBANON. CANADIAN AIR  
OPERATORS AND OWNERS OF ACFT REGISTERED IN CANADA ARE ADVISED TO  
TAKE ALL POTENTIAL RISK INFO INTO ACCOUNT IN THEIR RISK  
ASSESSMENT AND ROUTING DECISIONS WHEN OPERATING IN LEBANESE  
AIRSPACE AND FIR BEIRUT (OLBB) DUE TO POTENTIAL RISK TO AVIATION  
FROM MIL ACT.

FR:  
AVERTISSEMENT RELATIF A LA SECURITE DE L'ESPACE AERIEN EMIS PAR  
LE MINISTERE DES TRANSPORTS EN REPONSE A LA SITUATION DE SECURITE  
EN LIBAN. ON RECOMMANDE AUX EXPLOITANTS AERIENS CANADIENS ET  
PROPRIETAIRES D'AVIONS IMMATRICULES AU CANADA DE PRENDRE EN  
COMPTE TOUTES LES INFO SUR LES RISQUES POTENTIELS DANS LEUR  
EVALUATION DES RISQUES ET LEURS DECISIONS D'ITINERAIRE LORSQU'ILS  
OPERENT DANS L'ESPACE AERIEN LIBANAIS ET LA REGION D'INFORMATION  
DE VOL DE BEYROUTH (OLBB), EN RAISON DU RISQUE POTENTIEL POUR  
L'AVIATION LIE A L'ACT MIL)

(H1042/24 NOTAMR H0265/24  
Q) CZUL/QOBT/IV/BO/E/000/005/4528N07344W031  
A) CZUL B) 2403211104 C) 2412191600EST  
E) TRIGGER NOTAM - AIP SUPPLEMENT 19/24 IN EFFECT.  
CRANES ERRECTED WITHIN 30NM OF MONTREAL/PIERRE ELLIOTT  
TRUDEAU INTL AIRPORT

FR:  
NOTAM DECLENCHEUR - SUPPLEMENT D'AIP 19/24 EN VIGUEUR.  
GRUES SITUEES DANS UN RAYON DE 30 NM DE L'AEROPORT INTL  
PIERRE-ELLIOTT-TRUDEAU DE MONTREAL)

(H1034/24 NOTAMN  
Q) CZUL/QARCH/I/BO/E/000/999/5440N06941W999  
A) CZUL B) 2403210901 C) 2405162359  
E) MANDATORY IFR ROUTES:  
DELETE: CYHU H AND L DEP TO KBOS RNAV VIRKA ENE V167 SCUPP  
DELETE: CYMX H AND L DEP TO KBOS RNAV VIRKA ENE V167 SCUPP  
DELETE: CYUL H AND L DEP TO KBOS RNAV VIRKA ENE V167 SCUPP  
DELETE: CYQB L DEP TO KBOS NONJET RNAV ROGSA MOBAL CON CON154  
KHRIS LWM  
DELETE: CYOW H AND L DEP TO KBOS RNAV KODEX EPMOK SAVAL BUGSY  
ENE V167 SCUPP  
ADD: CYHU H AND L DEP TO KBOS RNAV VIRKA ENE OOSH ARR  
ADD: CYMX H AND L DEP TO KBOS RNAV VIRKA ENE OOSH ARR  
ADD: CYUL H AND L DEP TO KBOS RNAV VIRKA ENE OOSH ARR  
ADD: CYOW H AND L DEP TO KBOS RNAV KODEX EPMOK SSENA BUGSY ENE  
OOSH ARR

FR:  
SYSTEME DE ROUTES IFR OBLIGATOIRES:  
RETIREZ: CYHU H ET L DEP VERS KBOS RNAV VIRKA ENE V167 SCUPP  
RETIREZ: CYMX H ET L DEP VERS KBOS RNAV VIRKA ENE V167 SCUPP  
RETIREZ: CYUL H ET L DEP VERS KBOS RNAV VIRKA ENE V167 SCUPP  
RETIREZ: CYQB L DEP VERS KBOS NONJET RNAV ROGSA MOBAL CON CON154  
KHRIS LWM  
RETIREZ: CYOW H ET L DEP VERS KBOS RNAV KODEX EPMOK SAVAL BUGSY  
ENE V167 SCUPP  
AJOUTEZ: CYHU H ET L DEP VERS KBOS RNAV VIRKA ENE OOSH ARR  
AJOUTEZ: CYMX H ET L DEP VERS KBOS RNAV VIRKA ENE OOSH ARR  
AJOUTEZ: CYUL H ET L DEP VERS KBOS RNAV VIRKA ENE OOSH ARR  
AJOUTEZ: CYOW H ET L DEP VERS KBOS RNAV KODEX EPMOK SSENA BUGSY  
ENE OOSH ARR)

(H4360/23 NOTAMN  
Q) CZUL/QAFTT/IV/BO/E/000/999/5440N06941W999  
A) CZUL B) 2312201537 C) 2412191600EST  
E) TRIGGER NOTAM - AIP SUPPLEMENT 76/23 IN EFFECT - AUTOLAND  
PROCEDURES NOT RECOMMENDED IN RUNWAYS NOT COVERED BY ISED'S  
DESIGNATED 5G EXCLUSION AND PROTECTION ZONES

FR:  
NOTAM DECLENCHEUR - SUPPLEMENT D'AIP 76/23 EN VIGUEUR -  
PROCEDURES D'ATTERRISSAGE AUTOMATIQUE NON RECOMMANDEES SUR LES  
PISTES QUI NE FIGURENT PAS DANS UNE ZONE DESIGNEE D'EXCLUSION ET  
DE PROTECTION 5G DE L'ISDE)

(H4366/23 NOTAMN  
Q) CZXX/QADTT/IV/BO/E/000/999/5243N05321W999  
A) CZUL CZQM CZQX B) 2312202144 C) 2412191600EST  
E) TRIGGER NOTAM - AIP SUPPLEMENT 26/18 IN EFFECT. ADJUSTMENT TO THE

CANADA AIR DEFENCE IDENTIFICATION ZONE (ADIZ).

FR:  
NOTAM DECLENCHEUR - SUPPLEMENT D'AIP 26/18 EN VIGUEUR.  
MODIFICATION DE LA ZONE D'IDENTIFICATION DE DEFENSE AERIENNE DU  
CANADA)

(H1804/24 NOTAMN  
Q) CZUL/QARCH/IV/BO/E/000/999/5440N06941W999  
A) CZUL B) 2505160901 C) PERM  
E) AMEND PUBLICATIONS: AMEND MANDATORY IFR ROUTES:  
DELETE: CYOW H AND L DEP TO KBOS RNAV KODEX EPMOK SSENA BUGSY  
OOSHN ARR  
ADD: CYOW H AND L DEP TO KBOS RNAV KODEX EPMOK SSENA BUGSY ENE  
OOSHN ARR

FR:  
MODIFIEZ PUBLICATIONS: SYSTEME DE ROUTES IFR OBLIGATOIRES:  
RETIRER: CYOW H ET L DEP VERS KBOS RNAV KODEX EPMOK SSENA BUGSY  
OOSHN ARR  
AJOUTEZ: CYOW H ET L DEP VERS KBOS RNAV KODEX EPMOK SSENA BUGSY  
ENE OOSHN ARR)

(H1097/24 NOTAMN  
Q) CZUL/QARCH/IV/BO/E/000/999/5440N06941W999  
A) CZUL B) 2403271922 C) PERM  
E) AMEND PUBLICATIONS: AMEND MANDATORY IFR ROUTES:  
DELETE: E-BOUND L OLABA RNAV OLABA T791 ALONI DAVDA SSENA TALNO  
T721 TOXAL  
ADD: E-BOUND L OLABA RNAV OLABA T739 EPTUL T721 TOXAL

FR:  
MODIFIEZ PUBLICATIONS: SYSTEME DE ROUTES IFR OBLIGATOIRES:  
RETIRER: DIRECTION E L OLABA RNAV OLABA T791 ALONI DAVDA SSENA  
TALNO T721 TOXAL  
AJOUTEZ: DIRECTION E L OLABA RNAV OLABA T739 EPTUL T721 TOXAL)

(H1599/24 NOTAMR H1514/24  
Q) CZUL/QCAAS/IV/B/AE/000/999/4541N07402W070  
A) CYMX B) 2405021117 C) 2406062359  
E) MIRABEL EMERG FREQ 243.0MHZ U/S

FR:  
MIRABEL EMERG FREQ 243.0MHZ U/S)