

**Rocky Barnstormers R/C Club
Field Rules - Fishers Pond
2025**

MAAC Approved May 28, 2025

The following rules package must be available to all RPAS Pilots while operating RPAS at this site, either electronically or in print. Nothing in these rules relieves the RPAS pilot of their individual CAR compliance requirements.

Administrative Rules

Club: Rocky Barnstormers RC CLUB (#11, Zone A)

Location: Fisher's Pit

Gate GPS Coordinates: 52° 21' 3.99"N 115° 1' 5.02"W

Legal Description: SE12-39-08-W5th

Pilot Station Coordinates: 52° 20' 58.21"N, 115° 1 0.85"W

Contact(s): Ray Brosinsky, 20275L, Secretary
rbronins@telus.net 403-845-5289

Conditions for Use - All persons using this modelling site must:

1. be MAAC members in good standing.
2. be members of the Rocky Barnstormers RC Club, or an invited guest and
3. agree to follow the MAAC Safety code and all other site rules.

Any MAAC member attending an Event at this site must agree to attend any modeller briefing, or otherwise read and follow all site/Event rules. The Club or site operator is responsible to take reasonable steps to ensure a modeller briefing occurs for each modeller using the site.

1. Members are responsible for the conduct of their guests, invited guests or spectators.
2. Children and spectators are not permitted in the pit or flying area unless accompanied by the pilot or instructor. The utmost care will be exercised at all times to ensure the safety of the children and spectators. Only pilots, instructors and pilot assistants are permitted in the pit area.
3. No animals are permitted unless on a leash. The animal shall not be threatening or obnoxious to others. The owner is responsible for cleaning up after the animal, before leaving the field and for any damage to the field or club facilities caused by a member's pet.
4. Necessary steps must be taken to ensure that fuel is not spilled on the grass.
5. Clean up after yourself when done flying and please take your refuse home with you.
6. Any person causing damage to another person's equipment through the improper use of the frequency board, impound, or other careless activity is responsible for the replacement or repair of the other person's damaged equipment. If the two parties above cannot agree on the manner and/or value of restitution, then the executive will be the deciding party.

7. The owner of a downed aircraft is responsible for all crop damages resulting from the retrieval of the downed aircraft. A member of the Executive Committee must be notified immediately of any crop damage.
8. The Club executive will review these rules at least once a year.

Site/event emergency response requirements

In the event of an emergency, call (9-1-1 or phone number) - the site address to be provided to first responders is:

**Gate GPS Coordinates: 52° 21' 3.99"N 115° 1' 5.02"W
 Legal Description: SE12-39-08-W5th
 Located on Township Rd 392**

1. To find this site travel 5 Km west from bridge over the North Saskatchewan River on Highway 11A, then south (left) for 7.1 Km, then west (right) for ¾ Km. You are at the entrance to Fisher’s Gravel Pit, the flying site is on your right
2. A fire extinguisher must be present for all powered RPA operation.

Modelling Rules

MAAC Approved Modelling Categories

The following categories of MAAC modelling are approved at this site/event. In addition to the MAAC Safety Code, there may be site specific rules contained in this document.

Approved Category	Weight/Power Limits	Altitude/operating limits
mRPAS	Less than 250 grams	400’agl
RPAS	25kg or less	400’agl
Tethered (Control-Line)	Not approved	
Free flight		
Space Models		
Surface Vehicles		

MAAC Approved Site Add-ons

This site has not been approved for any MAAC add-ons.

Approved Add-on	Weight/Power Limits	Altitude/operating limits
RPAS Weight	Not approved	
RPAS Altitude		
RPAS Altitude and Weight		
RPIC		

RPAS/Model technical specifications or requirements or restriction

1. mRPAS requirements – mRPAS cannot be registered with Transport Canada. mRPAS are however regulated under CAR900.06 and part VI of the CAR. Compliance with MAAC safety code meets those requirements. mRPAS at advertised events must comply with the MAAC Event SFOC.
2. RPAS CAR requirements – There are no special CAR restrictions on RPAS models.
3. Club/Site/Event requirements:
 - a. The maximum sound level for an aircraft shall not exceed 96db. Aircraft that exceed 96db sound level shall not be flown at this airfield. Refer to the noise measurement test procedure for measurement standards.
 - b. There will be no running of, or flying of, combustion engines prior to 10:00 am on Sundays or prior to 9:00 am on the other days of the week.

RPAS Pilot/operator qualifications or requirements

1. mRPAS requirements – mRPAS do not require an RPAS operators' certificate however are regulated under CAR900.06 and part VI of the CAR. Except for Advertised Events there are no MAAC or CAR age restrictions on mRPAS flight.
2. RPAS Pilot CAR requirements. - All RPAS pilots using this site must have BASIC RPAS certification.
3. Club/Site/Event requirements. - none

CREW qualifications or requirements

1. mRPAS requirements - mRPAS do not normally require crew under the CAR.
2. RPAS CAR requirements - None.
3. Club/Site/Event requirements - None

Crew Rules

Visual Observers

1. Visual observers (VO) mandatory for RPAS operations in controlled airspace, above 400'agl, RPAS events open to the public or where specified by MAAC. However, the use of visual observers to alert pilots to presence to full sized air traffic is strongly encouraged. When required no member shall operate an RPAS unless:
 - a. A visual observer(s) is present who has been briefed or trained on any site/event procedures upon spotting a potential conflict with full-scale aircraft.
 - b. A minimum of one visual observer per flight line is required.
 - c. VO must not watch the models – their sole role is to scan the surrounding sky for approaching full-scale aircraft.
 - d. Position the VO where they have unobstructed sight lines – sitting in the shade beside a camper/structure is not acceptable. Equally they must be situated to have a reasonable communication ability with all pilots/modellers.
 - e. Use visual aids as required – sunglasses, wide brim hats, sunshades, binoculars or similar. If positioned far from pilot stations, provide suitable notification means such as air horns, lights, radios etc.

2. Per CAR (901.23(vii)) each site must have rules to ensure a clear full-scale detection and avoidance command/response protocol is in place – there is no time for debates or confusion. MAAC has adopted the following minimum:
 - a. **MAAC models/RPA shall give way/get out of the way of full-scale aircraft in all circumstances – no exceptions. There is never any onus on full-scale pilots to yield to models – ever.**
 - b. Upon spotting/hearing or being advised of any airplane that might pose a hazard with modeling activities, the VO shall yell in a loud clear voice “AIRPLANE”. **If in doubt, issue the warning.**
 - c. Upon hearing this command, all pilots shall descend to as low as altitude as safely possible, and if required land. The goal is to vacate the airspace vertically and then determine if RPA can continue to operate safely.
 - d. **Lateral deconfliction maneuvers are prohibited above 60’AGL.** Descending to 60’agl (tree top level) is the accepted Transport Canada initial response. Members operating near/off aerodromes have different specific response requirements.
 - e. Upon determining the full-scale aircraft is no longer a threat, the VO or other persons shall yell in a loud clear voice “ALL CLEAR”.
 - f. If any "official person" such as a peace officer, ATC or their delegate, has given a stop flying order, guidance or similar, all model flying **shall** stop immediately and shall not resume until permission to do so is obtained from person or body that issued the stop flying order.
 - g. Thereafter modeling activities may resume as normal.

Program Director, Air Boss, ATC Coordinator

This site is in uncontrolled airspace – a Program Director or an Air Boss is not required

RPIC – RPAS Pilot in command

Not approved

Instructors/Demo flights

Students may only fly under the supervision of a club appointed instructor.

Spotters

Use of spotters is optional

Airspace requirements or permissions

This site is in uncontrolled Class G airspace.

The nearest controlled airspace vertically is Class E V306 Airway at 2200'agl.

The nearest controlled airspace laterally is Red Deer Class D (SFC-3000') located over 30sm southeast.

Adjacent Aerodrome Procedures (within 3nm)

There are no aerodromes within 3nm of this site, therefore MAAC see and avoid procedures are deemed adequate for aviation safety.

Normal mRPAS/RPAS/model operating procedures

1. Prior to daily operations, an RPAS Wilco site survey shall be consulted. MAAC endorses the use of a single shared RPAS Wilco site survey provided:
 - a. A new site survey is conducted/checked at least once every 56 days (NAV CANADA schedule), and if there are changes the updated site survey is made available to all members.
 - b. All site survey information is readily available to all RPAS pilots on site (electronically or in print).
 - c. Prior to each flying session, members must check Aviation NOTAM for critical flight safety information, or changes to airspace or aerodromes. Members may share NOTAM information verbally or in print with other members at the site.
 - d. Members must confirm there are no changes to site layout affecting distances to unsheltered bystanders
 - e. Members must each visually confirm no changes to site obstructions, local obstacles and that weather conditions stipulated in any MAAC requirements are met.

NAV CANADA 56-Day Publication schedule - ensure you complete a new RPAS Wilco Site Survey on these dates:

2025	2026	2027	2028
20-Feb-25	22-Jan-26	18-Feb-27	20-Jan-28
17-Apr-25	19-Mar-26	15-Apr-27	16-Mar-28
12-Jun-25	14-May-26	10-Jun-27	11-May-28
07-Aug-25	09-Jul-26	05-Aug-27	06-Jul-28
02-Oct-25	03-Sep-26	30-Sep-27	31-Aug-28
27-Nov-25	29-Oct-26	25-Nov-27	26-Oct-28
	24-Dec-26		21-Dec-28

2. The MAAC mandated minimum weather conditions to commence or continue MAAC RPAS operations are:
 - a. no cloud ceiling (broken or overcast sky) **estimated** lower than 1000’agl if the site approved altitude is less than 400’, or no cloud ceiling **estimated** less than 1000’ above any higher site approved altitude, and
 - b. the RPA will be able to remain 500’ vertically and 1 sm (statute mile) horizontally clear of any cloud, and
 - c. an **estimated** horizontal visibility of 3sm (5km) or more around the flying area, and
 - d. no other obscuring conditions (fog, smoke, haze etc.) which could make spotting full-scale aircraft difficult.

NOTE – RPAS pilots may estimate cloud ceilings and visibility, provided they do so in good faith understanding the purpose of weather limits is to ensure we can see approaching full-scale aircraft.

3. Each RPAS pilot is responsible to ensure the following MAAC procedures and requirements have been met prior to commencement of any RPAS operation:
 - a. Any required MAAC manufacturer declaration provisions have been met, including all RPAS technical specifications verified, pilot and crew requirements, and

- b. All RPA and required equipment have been maintained and all mandatory actions completed before the flight, in accordance with the manufacturer declaration and
 - c. all paperwork such as pilot declarations, required operating manuals or similar is present, and
 - d. That any required crew members are properly qualified, have made any required declarations and are briefed on the operation.
4. Members shall not operate an RPAS at night unless it is brightly lit, weighs less than 25kg, and remains below 400'agl. Members shall use the Rocky Mountain House weather channel time to determine legal night.
5. Pilots may fly in formation provided they agree to do so. There is a limit of 5 airborne RPA at any time.
6. See site diagrams for normal site set-up areas such as parking, spectator areas, pit, or assembly areas, and start-up/run-up areas.
7. MAAC required buffer distances are variable and at this site are:
 - a. 7m from flight line to pilot stations, 10m from flight line to pits, and 30m from flight line to spectator and parking.
8. All models will be assembled in the pit or designated assembly area. Unpowered testing of controls and failsafe may occur here as well. All powered testing must occur in a start up area.
9. All models, including electric powered models, will be restrained before being armed or started in the designated startup areas.
 - a. There will be no running of, or flying of, combustion engines prior to 10:00 am on Sundays or prior to 9:00 am on the other days of the week.
 - b. Gas/glow/turbine models must be restrained or started in the start-up stands, located in the start-up area. Do not conduct prolonged tuning if other pilots are flying.
 - c. Necessary steps must be taken to ensure that fuel is not spilled on the grass.
 - d. Batteries shall not be connected to electric models unless the model is restrained in the start-up area – no exceptions.
10. See the diagrams below for Flying area, no-fly zones, flight line, safety line, runways, taxiways, and flying area demarcation.
 - a. The flying area, as measured from the center of the pilot stations, is a box 1,000 feet west, 1,000 feet east and 1,000 feet north. Refer to the Site Flying Area map attached. For no-fly zone depictions see attached Field Layout map.
 - b. Since the County of Clearwater has ruled that there will be no work of equipment in the gravel pit on weekends (Saturday & Sunday) it will fine to fly over gravel piles. If any labourers or trucks appear we are not to fly over them or be grounded.
11. The following are the site take-off, approach, landing and recovery procedures:
 - a. Pilots, or their spotter, shall call out all model movements.
 - b. Hand launching and bungee launching shall be done in agreement with any pilots flying – normally off to one side of the pilot stations.

- c. Pilots shall take off into the prevailing winds, or otherwise in agreement with all pilots flying. If no wind, all take-offs etc. shall be east or west but away from the sun.
- d. No person shall proceed past abeam the pilot stations without permission of other pilots flying.
- e. The recovery of downed models in the flying area shall not be done without the agreement of all pilots flying. Thereafter no new models may take-off until the downed model is recovered. No flying directly over the recovery crew.
- f. Upon landing and returning toward the pits all aircraft engines/electric motors will be shut down at the safety fence.

Emergency procedures

Fly-away or lost link.

RPAS pilots are required to know who to notify in the event of a RPAS fly-away outside our MAAC approved flying areas **which could reasonably enter** the nearest controlled airspace volume. Note this process is not required for temporary flight immediately outside the MAAC approved flying area, or for known crashes/off site “landing” outside the MAAC approved flying area.

1. If you experience a RPA fly-away, and in your judgement as the RPA pilot in command (including RPIC scenarios) the RPA has sufficient energy or capability to fly to and enter the identified controlled airspace volume (either laterally or vertically, or both), you are legally required to attempt contact with listed agencies below and advise them of the fly-away situation.
2. MAAC has assessed this site and determined the following:

This site is wholly in uncontrolled airspace. The nearest controlled airspace volume is

a. Laterally

Nearest Controlled Airspace – Fly-away - Laterally				
Altitude	Name, Class, Type	Distance and Direction	Altitude	Contact Info
Below 400'	Red Deer Class D control zone	Over 30sm south east	SFC-3000'	Edmonton Flight Information Region(780) 890-8397
Above 400'	Red Deer Class E	Over 30sm south east	4000'	

b. Vertically

If you experience a fly away while operating at higher altitudes (above 400'), or if the model is climbing uncontrollably and in the pilot in command's judgement may enter overlying or adjacent controlled airspace, contact the listed agency as soon as possible.

Nearest Controlled Airspace – Fly-away - Vertically				
Location	Name, Class Type	Based at	Other	Contact Info
Over site	Class E airway	2200'agl		Edmonton Flight Information Region(780) 890-8397

Incident Accident

1. If there is any type of near miss or safety concern between a full-scale aircraft, bystander and our RPA/models, **ALL FLYING/MODELLING** SHALL cease immediately. The members involved should fill out a MAAC reportable occurrence report and submit that to MAAC and the Site/Event organizer and follow MAAC policy.
 - a. If the member(s) involved believe the risk was very minimal, they may complete their own self declaration or risk assessment using the MAAC form. Submit a copy of the form to the Site/Event organizers when able and recall if this involved RPAS you must keep this form for one year (CAR901.49 (2)). Resume flying/modelling when done.
 - b. If the member or Site/Event operators deems the event serious, flying/modeling will not resume until members are given permission by the Site/Event organizers – in writing.
 - c. If there is physical contact between a full-scale aircraft, a by-stander, a spectator and a MAAC RPAS/model – all flying/modelling will cease until MAAC confirms you may resume operations.
 - d. This process is for **your** protection.

Model damage/repair protocol

1. In the event of any normally expected modelling mishap which requires any degree of repair, the model may only be “field repaired” if all normal modelling supplies and tools are present and used in accordance with established modeling practices or manufacturer instructions.
 - a) Any repair other than minor (replacing broken propeller etc.) shall be treated as a maiden flight/operation. Ensure RPAS logbook entries are made.
 - b) Any repair that cannot be fixed at the field, shall only be repaired at the modellers/owners shop or other repair facility. Ensure RPAS logbook entries are made.

MAAC Add-ons

RPAS Operations Above 400’AGL - Not approved

RPAS Operations Above 25kg - Not approved

RPAS Operations Above 400’AGL and Above 25kg - Not approved

RPAS Pilot In Command - Not approved

Event Approval

1. ALL MAAC events that require approval or want MAAC insurance must occur at SOC sites and be approved by MAAC. All outdoor events with operable RPAS must be approved by MAAC.
2. **Outdoor events that are clearly listed as “member-only” events** regardless of reason such as competitions, fun-fly’s, fly-in’s, airshows, air racing, demonstrations or any other organized gatherings do **not** require MAAC Event SFOC compliance. **All advertising/notice including internal to MAAC must include the following phrase:**

This event is closed to the public - only MAAC members and crew may attend. Invited guest(s) of a MAAC member are permitted provided they are supervised.

3. **“Advertised events”** - regardless of what you “named” your event, if your outdoor event includes operable (flying) RPAS **and** is open/advertised to the general public in any fashion, you **must** meet the MAAC SFOC requirements (the SAG will work with clubs on the rules required). All advertising/notice, including internal to MAAC **must** include the following phrase:

This event is open to the public and all MAAC members, crew, and their invited guests. MAAC Event SFOC compliance is required.

Foreign RPAS Pilots (US or other)

MAAC has already obtained Transport Canada approval for foreign RPAS pilots to operate RPAS at our MAAC sites and events (MPPD14 approved July 2023). Foreign pilots simply join MAAC and follow the provisions of MPPD14 (on the website). Also see the RPAS Wilco NOTAM (2024-02).

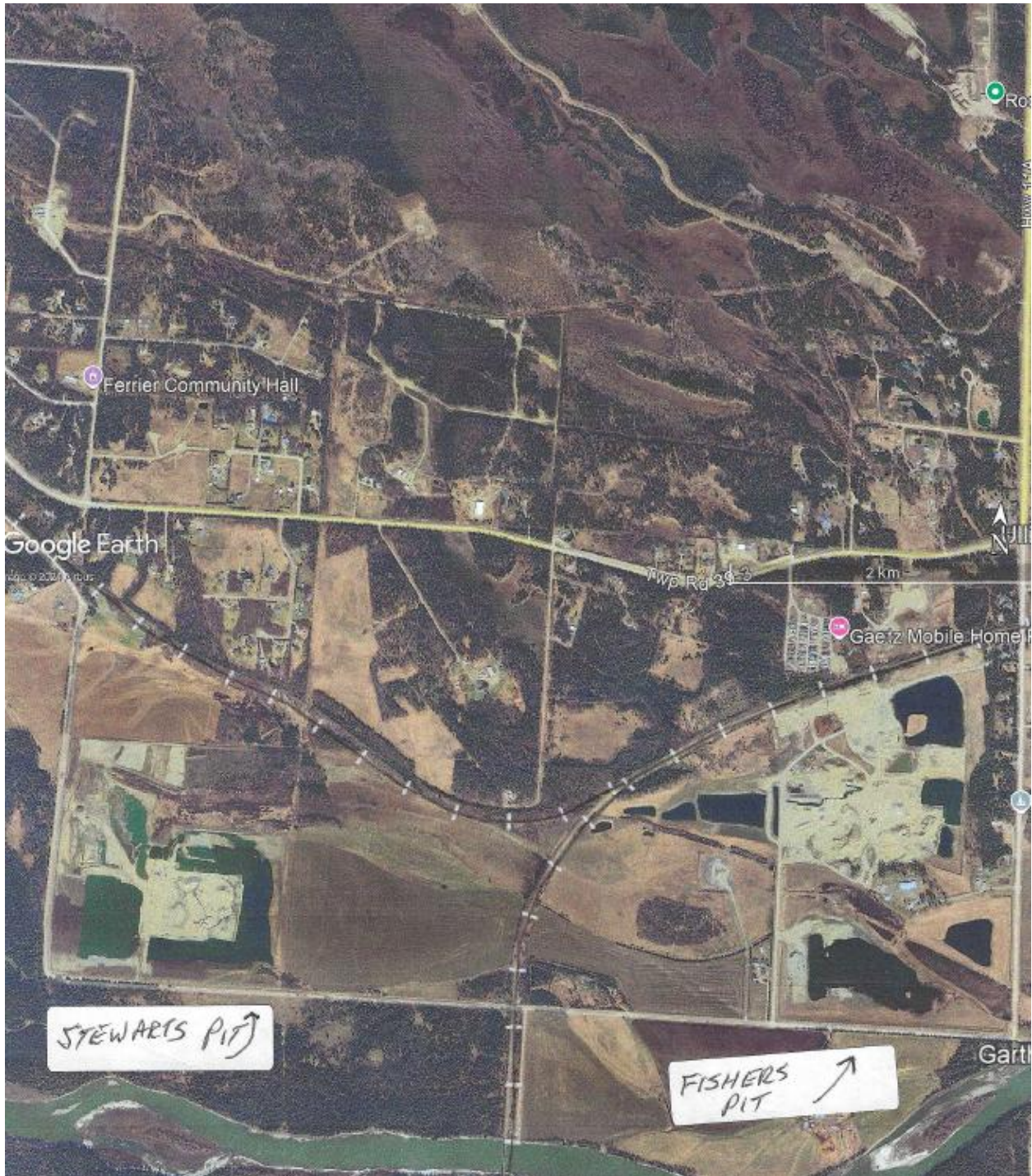
Over 400'agl and above 25kg - not approved

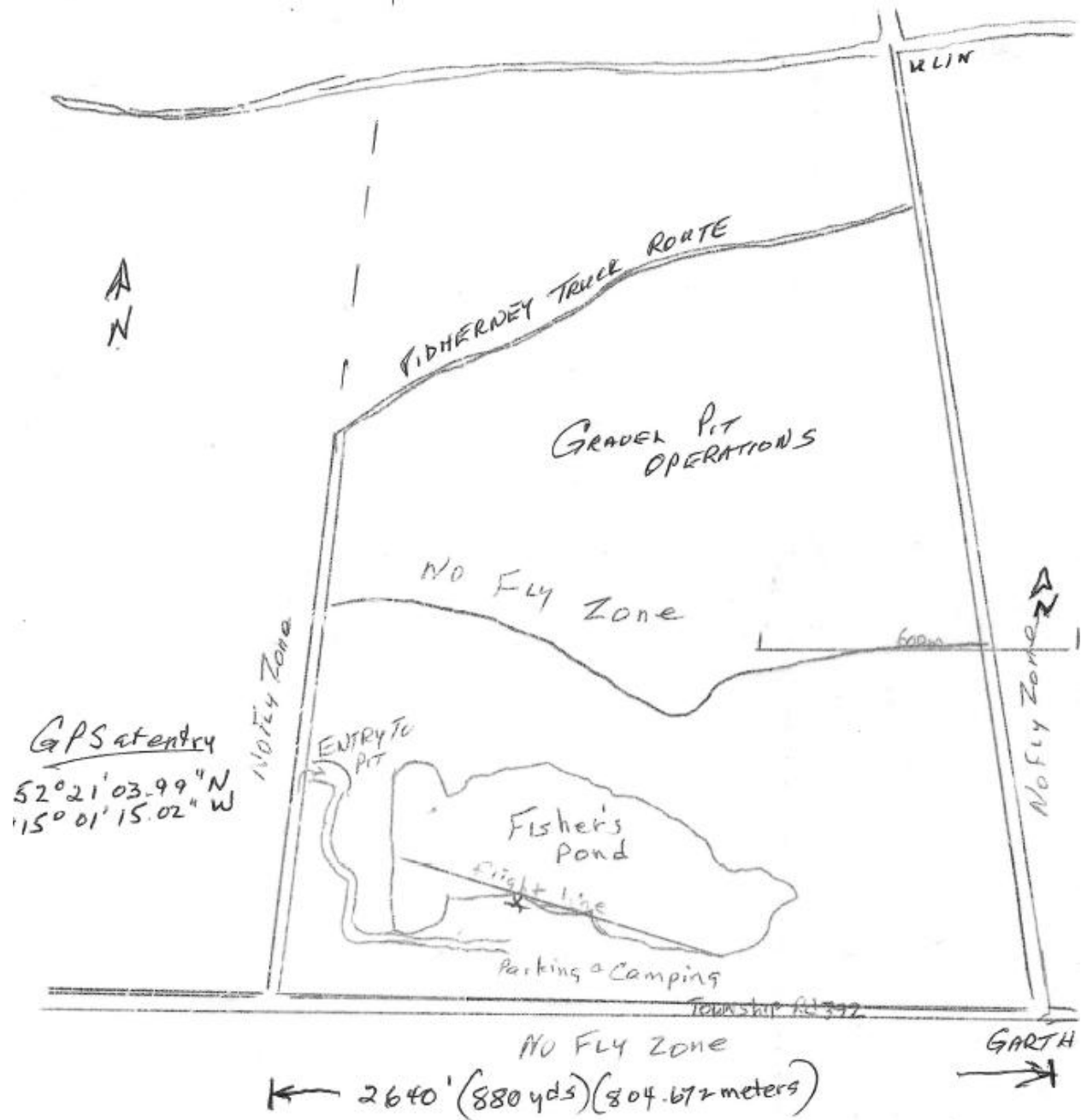
The following are the normally expected process and rules for an event.

1. The club/event organizers shall:
 - a. Prior to submitting an event approval application, ensure they have read all MAAC policy and have submitted an event package indicating they have complied as best as possible.
 - b. Ensure the site meets all MAAC event organizational and logistic requirements such as signage, parking control, spectator safety barriers, washroom and food provisions, and fire/medical safety requirements commensurate with the expected attendance.
 - c. Ensure the event complies with MAAC event policy and any CAR or SFOC requirements.
 - d. Ensure the MAAC events warning sign is posted for the event.
 - e. Ensure all attending modellers/RPAS pilot are **current MAAC members**.
 - f. Take reasonable steps to ensure all attending modellers/RPAS pilots **receive a briefing** on site or event rules using the MAAC minimum checklist (attached).
2. In addition to all the above and the club rules, at any event where the public is in attendance under the MAAC SFOC, the event organizers are responsible to ensure:
 - a. MAAC warning signs are posted at all public entry points.
 - b. A copy of the MAAC SFOC and application are on site and available to all RPAS pilots.
 - c. All RPAS pilots sign the Transport Canada sign in sheet.
 - d. All RPAS pilots receive a briefing on site rules and
 - e. A visual observer is always present RPAS are flying.
 - f. Ensure all follow up actions are completed after the event, most notably any Transport Canada paperwork.
3. Any member attending an event shall
 - a. Comply with all CAR, SFOC, MAAC and club/event rules as required.
 - b. Not operate a model or RPAS unless they attend or obtain a pilot briefing.

Diagrams/maps

Site set-up diagram.





* FLIGHT LINE
 $52^{\circ}20'58.21''N$
 $115^{\circ}01'00.85''W$



Site Flying area diagram.



WARNING!



**AEROMODELING
MAY CAUSE
SERIOUS INJURY!**

**PROCEED AT
YOUR OWN RISK!**

AVERTISSEMENT!

**L'AÉROMODÉLISME
PEUT CAUSER
DES BLESSURES GRAVES!**

**PROCÉDEZ À VOS PROPRES
RISQUES!**