



Flight Plan & Site Survey

Created using **RPAS Wilco**®

Reference No:	2AFA72
Title:	Rocky Barnstormers Fishers Pond
Pilot Name:	
Pilot Certificate:	
Flight Start:	October 29, 2024 6:44 PM
Flight End:	October 29, 2024 8:44 PM
Flight Area (Latitude):	52° 20' 58.21" N (52.35)
Flight Area (Longitude):	115° 1' 0.85" W (-115.017)
Altitude - Radius:	Alt: 400 ft - Rad: 926.0 m (0.5 nm)
Classification:	UNCONTROLLED
FIR - Contact:	CZEG - 780-890-8397

Please ensure you received all required authorizations prior to flight.

Disclaimer

This Site Survey was created using RPAS Wilco by AIM Robotics. The flight plan contained is intended only for RPAS flights on the date/time and location specified. The user accepts all responsibility for the accuracy and completeness of the information contained.

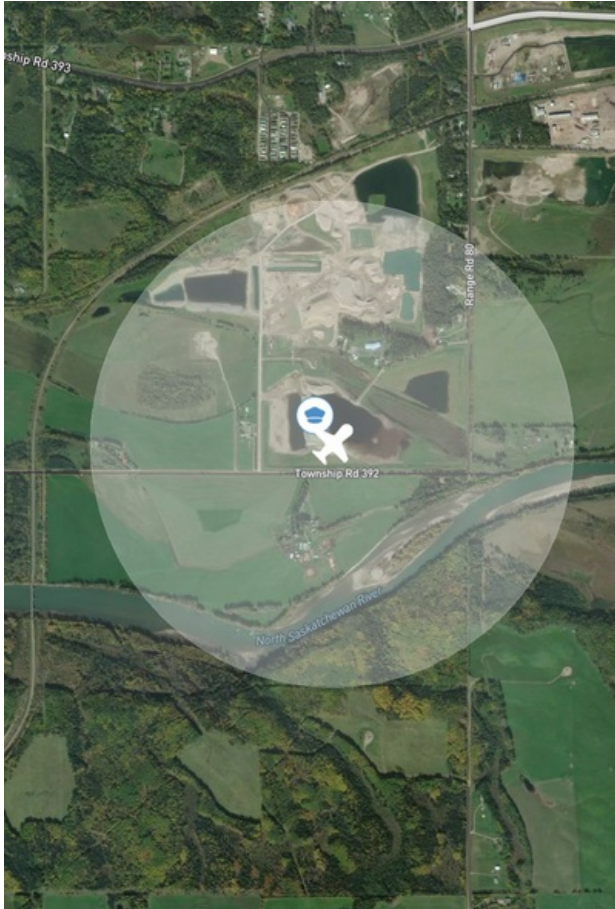
For the complete Terms & Conditions, see

<https://rpswilco.com/#/tnc>

Included

- Site Survey
- Obstacles (if available)
- Nearby Aerodromes
- Canadian Aviation Regulations
- GFA
- Aerodrome Supplements
 - METAR & TAF (if available)
 - NOTAMS
 - CFS



Flight Map



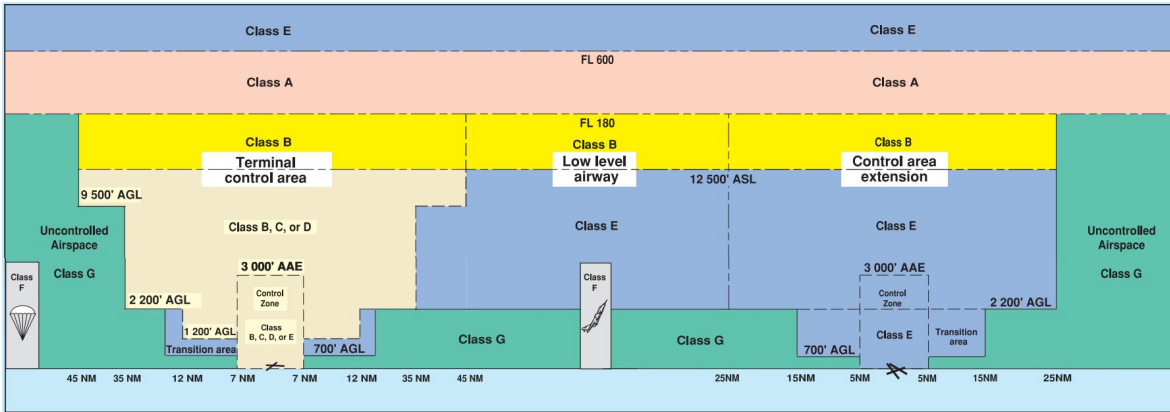
RPAS Specification

- **Manufacturer:**
MAAC
- **Model:**
MODELAIRPLANE
- **Registration Number:**
- **Eligible for advanced operations:**
Yes
- **Manufacturer RPAS safety assurance:**
 - **Controlled Airspace:** YES
 - **Near People:** NO
 - **Over People:** NO

MAP Details

	Latitude	Longitude
 MODEL	52° 20' 58.21" N (52.35)	115° 1' 0.85" W (-115.017)
 Pilot	52° 21' 1.81" N (52.3505)	115° 1' 4.45" W (-115.0179)

Airspace Classification



Overlying Airspaces

Class	Name	Floor	Ceiling
E	V306 Airway	2200AGL	12500MSL
B	V306 Airway	12500MSL	18000MSL

Nearest Aerodromes & Distance from Operation

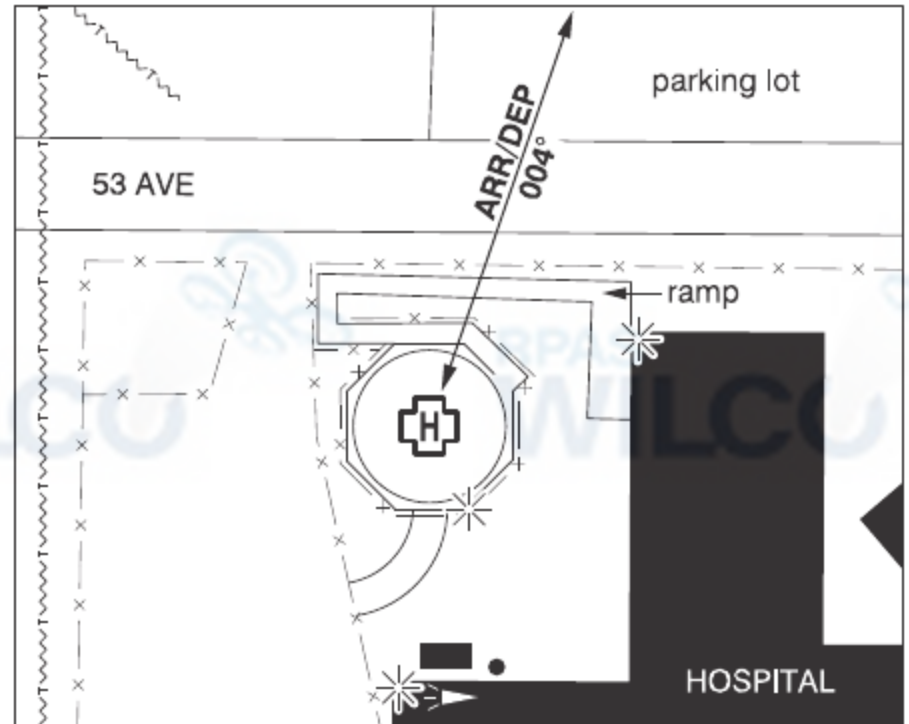
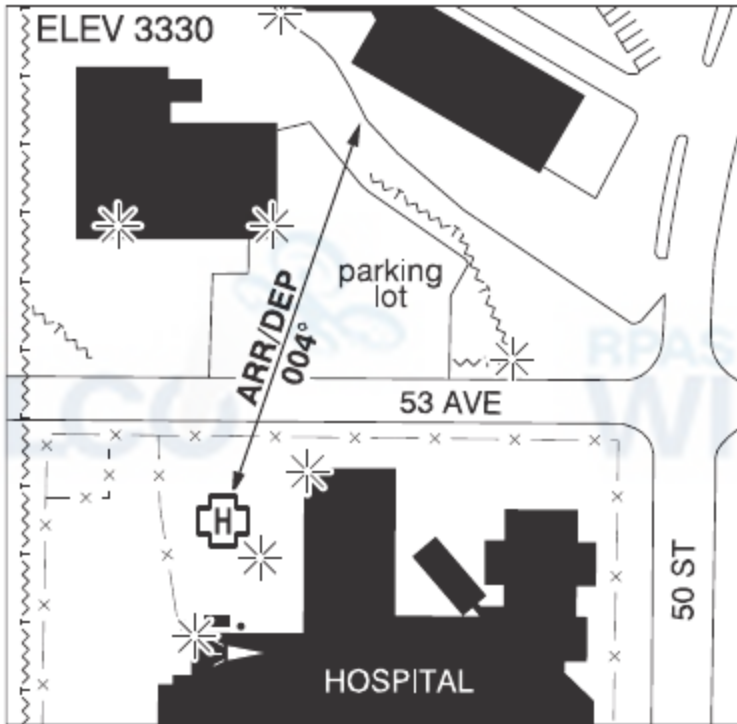
ROCKY MOUNTAIN HOUSE (GEN HOSPITAL) (CEU4 - HELIPORT - Cert)	Lat: 52.379	Long: -114.921	7.291KM	3.94NM	NE
ROCKY MOUNTAIN HOUSE (CYRM - AERODROME - Reg)	Lat: 52.429	Long: -114.904	11.698KM	6.32NM	NE
AHLSTROM (CAM4 - AERODROME/HELIPORT - Reg)	Lat: 52.346	Long: -114.667	23.77KM	12.83NM	E
W. PIDHIRNEY RESIDENCE (CWP3 - HELIPORT - Reg)	Lat: 52.359	Long: -114.571	30.302KM	16.36NM	E
HESPERO (CFB3 - AERODROME - Reg)	Lat: 52.3	Long: -114.464	37.977KM	20.51NM	E

ALBERTA

AERODROME/FACILITY DIRECTORY

ROCKY MOUNTAIN HOUSE (GEN HOSP) AB (Heli)

CEU4



REF	N52 22 44 W114 55 15 15°E (2013) UTC-7(6) Elev 3330' A5015
OPR	FM&E AHS 403-895-1100 Cert PPR
FLT PLN	
FIC	Edmonton 866-WXBRIEF (Toll free within Canada) or 866-541-4102 (Toll free within Canada & USA)
ACC	Edmonton IFR 888-358-7526
HELI DATA	FATO 86' dia non-supporting TLOF 57' dia CONC Safety Area 115' dia Elevated heli 17,000 lbs Max heli overall length 57.4'
LIGHTING	RY(LO) Yellow LED
COMM	
MF	Rocky Mountain House tfc 122.8 5NM centered on Rocky Mountain House A/D 3NM N 6300 ASL (CAR 602.98)
PRO	Arr/dep 004° fr heli, slope 6% (H3), day/night use (CAR 602.96)
CAUTION	Unlgt'd p-lines aprx 150' W of heli. P-lines aprx 225' NNE of heli, E pole lgt'd.

ALBERTA

AERODROME/FACILITY DIRECTORY

ROCKY MOUNTAIN HOUSE AB

CYRM

REF	N52 25 47 W114 54 15 3NNE 15°E (2014) UTC-7(6) Elev 3244' A5015 LO2 HI3 CAP	
OPR	Town 403-845-4742 Reg	
PF	B-7,8 C-1,2,3,4,5,6	
FLT PLN		
FIC	Edmonton 866-WXBRIEF (Toll free within Canada) or 866-541-4102 (Toll free within Canada & USA)	
ACC WX	Edmonton IFR 888-358-7526 AUTO (see COMM) WxCam	
SERVICES		
FUEL	100LL, JA (FSII avbl) Vertical Extreme Fuels 403-819-7285	
S	1,4,5,6	
RWY DATA	Rwy 13(132°)/31(312°) 5513x100 ASPH AGN IIIA	
RCR	Opr CRFI Maint avbl 15-23Z† Mon-Fri exc hols O/T 2 hrs PN, call out chg may apply. PLR.	
LIGHTING	13-(TE ME) V2, 31-(TE ME) V2 ARCAL-122.8 type K	
COMM		
MF	tfc 122.8 5NM 6300 ASL (CAR 602.98)	
PAL	Edmonton Ctr 134.3	
AUTO	131.975	
NAV		
VOR/DME	YRM 114.3 Ch 90 N52 30 08 W115 19 25 (3543')	
CAUTION	Extv aerobatic activity overhead the aprt extending to 1NM E of rwy, sfc to 8000 ASL. Wildlife may be on or in vic rwy. Water bomber activity at or in vic of A/D Apr thru Sep. No line of sight btwn opposing rwy thlds	

ALBERTA

AERODROME/FACILITY DIRECTORY

ALHAMBRA / AHLSTROM AB

CAM4

REF	N52 20 45 W114 40 02 Adj NE 15°E (2012) UTC-7(6) Elev 3212' A5005 A5015	
OPR	Ahlstrom Air Ltd 403-729-3958 Reg	
FLT PLN	FIC Edmonton 866-WXBRIEF (Toll free within Canada) or 866-541-4102 (Toll free within Canada & USA)	
RWY DATA	Rwy 09(094°)/27(274°) 2500x60 GRASS	
RCR	Opr Ltd win maint	
HELI DATA	50' x 66' concrete	
COMM	ATF tfc 122.8 4NM 6200 ASL	
CAUTION	Marked p-line across apch Rwy 09 running N/S aprx 18 AGL, aprx 250' W Thld 09. Unmarked p-line running SW/NE aprx 18 AGL, aprx 600' ESE Thld 27.	

ALBERTA

AERODROME/FACILITY DIRECTORY

LESLIEVILLE / W. PIDHIRNEY RESIDENCE AB (Heli)

CWP3

REF	N52 21 33 W114 34 17 1.9SE 15°E (2012) UTC-7(6) Elev 3130' A5005 A5015	
OPR	Wayne Pidhirney 403-845-0654 Reg PPR Day only	
PF	D-1,2,3,4,5,6	
FLT PLN		
FIC	Edmonton 866-WXBRIEF (Toll free within Canada) or 866-541-4102 (Toll free within Canada & USA)	
SERVICES		
FUEL	JA	
HELI DATA	FATO/TLOF 64' dia ASPH Safety Area 85' dia Max heli overall length 42.7' Opr	
RCR		
LIGHTING	RF(FL) V1	
COMM		
ATF	tfc 122.8 5NM 6200 ASL	
PRO	Arr/dep 185° to 230°, slope 10% (H3), day use only.	
CAUTION	Wooden fence aprx 26' fr heli safety area - day marked.	

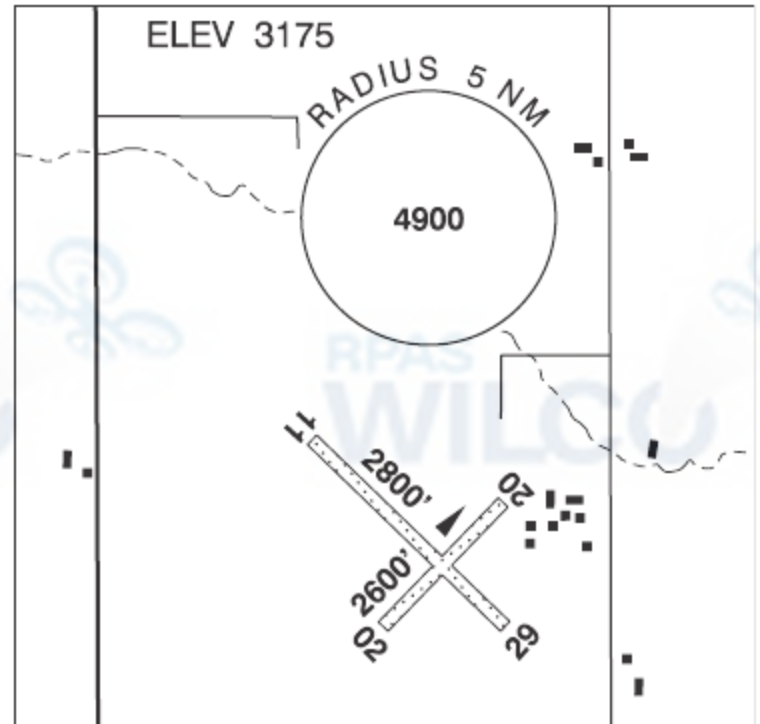
ALBERTA

AERODROME/FACILITY DIRECTORY

HESPERO AB

CFB3

REF	N52 18 00 W114 27 49 2SW 15°E (2012) UTC-7(6) Elev 3175' A5005 A5015
OPR	Skocdopole Construction Ltd 403-746-5744 or 403-357-8266 Reg
FLT PLN	
FIC	Edmonton 866-WXBRIEF (Toll free within Canada) or 866-541-4102 (Toll free within Canada & USA)
ACC	Edmonton IFR 888-358-7526
RWY DATA	Rwy 11(119°)/29(299°) 2800x100 GRASS Rwy 02(029°)/20(209°) 2600x100 GRASS
RCR	Opr Ltd win maint
COMM	
ATF	tfc 123.2 4NM 6200 ASL



Canadian Aviation Regulations

Division III — General Operating and Flight Rules

For full listing please visit : <https://laws-lois.justice.gc.ca/eng/regulations/SOR-96-433/FullText.html#s-901.27>

Visual Line-of-sight

- **901.11 (1)** Subject to subsection (2), no pilot shall operate a remotely piloted aircraft system unless the pilot or a visual observer has the aircraft in visual line-of-sight at all times during flight.
- **(2)** A pilot may operate a remotely piloted aircraft system without the pilot or a visual observer having the aircraft in visual line-of-sight if the operation is conducted in accordance with a special flight operations certificate — RPAS issued under section 903.03.

Procedures

- **901.23 (1)** No pilot shall operate a remotely piloted aircraft system unless the following procedures are established:
 - **(a)** normal operating procedures, including pre-flight, take-off, launch, approach, landing and recovery procedures; and
 - **(b)** emergency procedures, including with respect to
 - **(i)** a control station failure,
 - **(ii)** an equipment failure,
 - **(iii)** a failure of the remotely piloted aircraft,
 - **(iv)** a loss of the command and control link,
 - **(v)** a fly-away, and
 - **(vi)** flight termination.
- **(2)** If the manufacturer of the remotely piloted aircraft system provides instructions with respect to the topics referred to in paragraphs (1)(a) and (b), the procedures established under subsection (1) shall reflect those instructions.
- **(3)** No pilot shall conduct the take-off or launch of a remotely piloted aircraft unless the procedures referred to in subsection (1) are reviewed before the flight by, and are immediately available to, each crew member.
- **(4)** No pilot shall operate a remotely piloted aircraft system unless the operation is conducted in accordance with the procedures referred to in subsection (1).

Site Survey

901.27 No pilot shall operate a remotely piloted aircraft system unless, before commencing operations, they determine that the site for take-off, launch, landing or recovery is suitable for the proposed operation by conducting a site survey that takes into account the following factors:

- **(a)** the boundaries of the area of operation;
- **(b)** the type of airspace and the applicable regulatory requirements;
- **(c)** the altitudes and routes to be used on the approach to and departure from the area of operation;
- **(d)** the proximity of manned aircraft operations;
- **(e)** the proximity of aerodromes, airports and heliports;
- **(f)** the location and height of obstacles, including wires, masts, buildings, cell phone towers and wind turbines;
- **(g)** the predominant weather and environmental conditions for the area of operation; and
- **(h)** the horizontal distances from persons not involved in the operation.

Operations at or in the Vicinity of an Aerodrome, Airport or Heliport

- **901.47 (1)** No pilot shall operate a remotely piloted aircraft at or near an aerodrome that is listed in the *Canada Flight Supplement* or the *Water Aerodrome Supplement* in a manner that could interfere with an aircraft operating in the established traffic pattern.
- **(2)** Subject to section 901.73, no pilot shall operate a remotely piloted aircraft at a distance of less than
 - **(a)** three nautical miles from the centre of an airport; and
 - **(b)** one nautical mile from the centre of a heliport.
- **(3)** No pilot shall operate a remotely piloted aircraft at a distance of less than three nautical miles from the centre of an aerodrome operated under the authority of the Minister of National Defence unless the operation is conducted in accordance with a special flight operations certificate — RPAS issued under section 903.03.

Records

- **901.48 (1)** Every owner of a remotely piloted aircraft system shall keep the following records:
 - **(a)** a record containing the names of the pilots and other crew members who are involved in each flight and, in respect of the system, the time of each flight or series of flights; and
 - **(b)** a record containing the particulars of any mandatory action and any other maintenance action, modification or repair performed on the system, including
 - **(i)** the names of the persons who performed them,
 - **(ii)** the dates they were undertaken,
 - **(iii)** in the case of a modification, the manufacturer, model and a description of the part or equipment installed to modify the system, and
 - **(iv)** if applicable, any instructions provided to complete the work.
- **(2)** Every owner of a remotely piloted aircraft system shall ensure that the records referred to in subsection (1) are made available to the Minister on request and are retained for a period of
 - **(a)** in the case of the records referred to in paragraph (1)(a), 12 months after the day on which they are created; and
 - **(b)** in the case of the records referred to in paragraph (1)(b), 24 months after the day on which they are created.
- **(3)** Every owner of a remotely piloted aircraft system who transfers ownership of the system to another person shall, at the time of transfer, also deliver to that person all of the records referred to in paragraph (1)(b).