
FLIGHT PLAN & SITE SURVEY

A 928-5807 Northern Alberta FPV League- M.E. Lazerte High School

April 29, 2026



IMPORTANT NOTICE

Please ensure you have received all required authorizations prior to flight. This Site Survey was created using RPAS Wilco. The user accepts all responsibility for the accuracy of the information.

Terms & Conditions: rpswilco.com/#tnc

Mission Information

A 928-5807 NORTHERN ALBERTA FPV LEAGUE- M.E. LAZERTE HIGH SCHOOL

FLIGHT DETAILS

Reference No:	MAAC-928-5807
Project Name:	Northern Alberta FPV League
Pilot Name:	MAAC
Pilot Certificate:	
Mission Type:	VLOS
Flight Start:	April 29, 2026 05:47 PM
Flight End:	April 29, 2026 06:47 PM

LOCATION DETAILS

Flight Address:	M.E. Lazerte High School
Latitude:	53° 36' 20.09" N (53.606)
Longitude:	113° 26' 37.56" W (-113.444)
Altitude / Radius:	400 ft / 926.0 m (0.5 nm)
Classification:	UNCONTROLLED
FIR / Contact:	CZEG / 780-890-8397





REPORT CONTENTS

Site Survey • Obstacles (if available) • Nearby Aerodromes • Canadian Aviation Regulations • GFA • Aerodrome Supplements • METAR & TAF • NOTAMs • CFS

Flight Map & MODEL Details

MISSION LOCATION SURVEY

MISSION LOCATION DETAILS

ROLE	LATITUDE	LONGITUDE
 MODEL	53° 36' 20.09" N 53.606	113° 26' 37.56" W -113.444
 Pilot		
 Payload Op.		
 Observer		

Airspace Classification

MISSION LOCATION SURVEY

AIRSPACE MAP



OVERLYING AIRSPACES

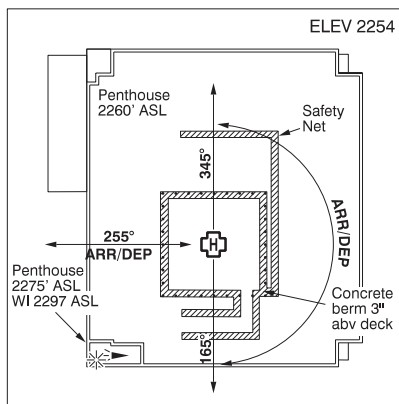
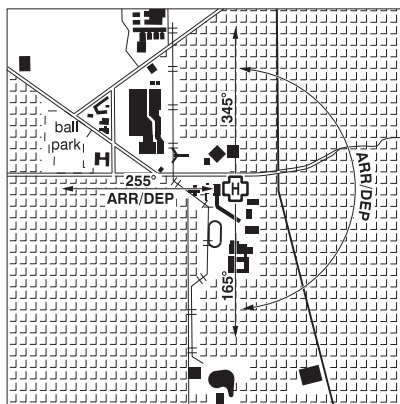
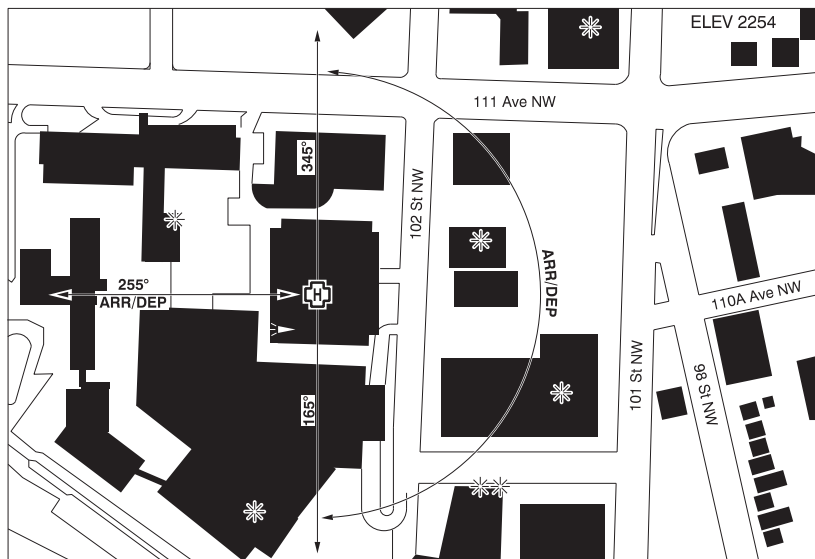
Class	Name	Floor	Ceiling
E	Edmonton, AB c) [TA]	3000AGL	4100MSL
C	Edmonton, AB e) [TCA]	4100AGL	18000MSL
C	Edmonton, AB c) [TCA]	7000AGL	9500MSL
C	Edmonton, AB d) [TCA]	4600AGL	7000MSL
E	T639 Fixed RNAV Route	2200AGL	18000MSL
B	Edmonton, AB a) [TCA]	12500MSL	18000MSL
C	Edmonton, AB b) [TCA]	9500MSL	12500MSL
E	T682 Fixed RNAV Route	2200AGL	18000MSL
E	T747 Fixed RNAV Route	2200AGL	18000MSL
E	T812 Fixed RNAV Route	2200AGL	18000MSL

NEAREST AERODROMES & DISTANCE FROM OPERATION

EDMONTON (ROYAL ALEXANDRA HOSPITAL) (CFH7 - HELIPORT - Cert)	Lat: 53.558	Long: -113.496	6.315KM	3.41NM	SW
NAMAO (CYED - HELIPORT - DND)	Lat: 53.669	Long: -113.476	7.365KM	3.98NM	N
UNIV OF ALBERTA (STOLLERY CHILDREN'S HOSP MAHI) (CEW7 - HELIPORT - Cert)	Lat: 53.52	Long: -113.522	10.828KM	5.85NM	SW

EDMONTON (ROYAL ALEXANDRA HOSP) AB (Heli)

CFH7



REF	N53 33 28 W113 29 47 Adj 15°E (2014) UTC-7(6) Elev 2254' VTA A5015
OPR	Alberta Health Services 888-999-3770, RPAS Operation Enquiries 780-735-6555 Cert NVIS OPS AUTH PPR
PF	A-1,4 C-2,3,5,6
FLT PLN	
FIG	Edmonton 866-WXBRIEF (Toll free within Canada) or 866-541-4102 (Toll free within Canada & USA)
ACC	Edmonton IFR 888-358-7526
HELI DATA	FATO 86' dia non-supporting TLOF 64' x 64' CONC Safety Area 115' x 115' Elevated rooftop 17,000 lbs Max heli overall length 57.4' (CAR 602.96)
RCR	Opr
LIGHTING	RY(LO) PN ctc opr

ALBERTA

AERODROME / FACILITY DIRECTORY

EDMONTON (ROYAL ALEXANDRA HOSP) AB (Heli) (Cont'd)

CFH7

COMM

ATF tfc 123.2 2NM below 4100 ASL
TML Edmonton 127.4 4100 ASL and above

PRO

Arr/dep 255° & 345° to 165° fr heli (H1) (CAR 602.96); routing via heli VTPC or as directed by ATC. Edmonton Intl Class E airspace 3000 ASL (TRANSPONDER MANDATORY) and Class C airspace 4100 ASL and above overlies A/D. Acft operating in Edmonton Class C require a discrete transponder code which may be obtained by filing a flt pln or ctc 888-358-7526 at least 30 min prior to entering. Air traffic advsy freq 123.2 Edmonton City Area in Class G and E airspace.

CAUTION

Concrete guardrails extend 3" abv ramp edges. Hatched area descends away fr Heli to parkade. Lgtd elevator penthouse aprx 100' SW of pad ctr.

ALBERTA

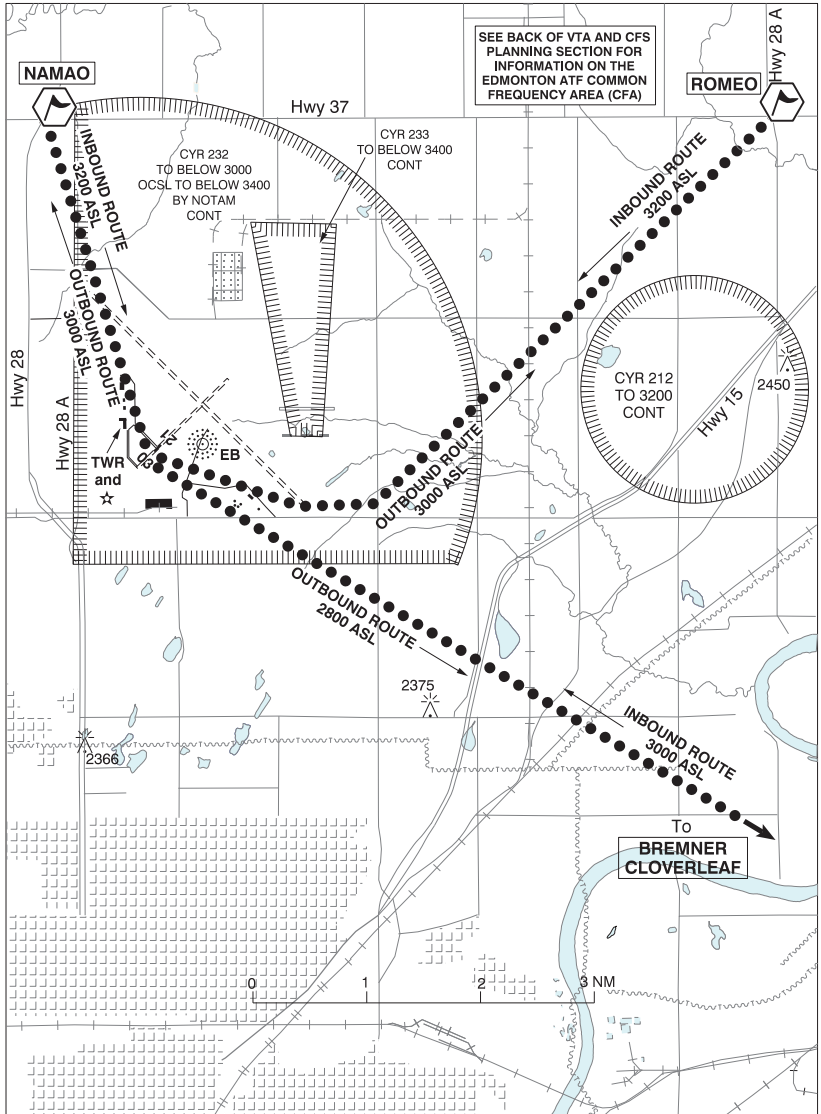
AERODROME / FACILITY DIRECTORY

EDMONTON / NAMAO AB (Heli)

CYED

REF	N53 40 09 W113 28 32 8NNE 14°E (2018) UTC-7(6) Elev 2257' VTA A5015 LO1 LO2 T1	
OPR	408 OPS DND 780-973-4163 CSN 319-528-4163 Mil PPR Fit adv DND 780-973-4108 (emerg only) CSN 319-528-4108	
PF	A-1,2 ltd hrs C-3 D-4,5,6	
FLT PLN	Ctc 408 Sqn OPS 780-973-4163 min 48 hr notice for PPR	
FIG	Edmonton 866-WXBRIEF (Toll free within Canada) or 866-541-4102 (Toll free within Canada & USA)	
ACC	Edmonton IFR 888-358-7526	
MIL	780-973-4163 CSN 319-528-4163 ltd hrs at Sqn OPS	
WX	Met brief for mil only. Lcl Met Section CSN 528-4972 ltd hrs. O/T JMC 1-800-WXMETEO (996-3836) or CSN 432-2613. (See COMM). METAR during mil fit ops. TAF dur mil fit ops, issue times depending on mil requirements.	
SERVICES		
FUEL	F-34	
OIL	NATO 9150-01-209-2684 (156)	
ARFF	CAT 3	
JASU	CE12	
MIL ADV	408 Sqn Ops call "GANDER OPS" 131.4 383.7 fm 40.9 ltd hrs	
HELI DATA	FATO 03H(031°)/21H(211°) 148 x 492 ASPH unltld	
LIGHTING	ARCAL-118.0 type K	
COMM		
MF/ATF	Namao advsy 118.0 ltd hrs Mon-Fri exc hols O/T tfc 118.0 Opr dates and hrs may vary without notice Fit Following 383.7	
ARR	Edmonton 119.5	
DEP	Edmonton 119.5	
PMSV	344.6 ltd hrs	
NAV		
NDB	EB 256 (L) N53 40 06 W113 27 37 Unmonitored outside oprg hrs	
PRO	For VFR rtes see Edmonton (Namao) Heli VTPC or as directed by ATC. Heli is within CYR 232. Range 0.6NM E of EB NDB may be open. Avoid CYR 212 sfc to 3200 ASL. Air taxi skid-equipped only via shortest rtes or as directed by ATC.	

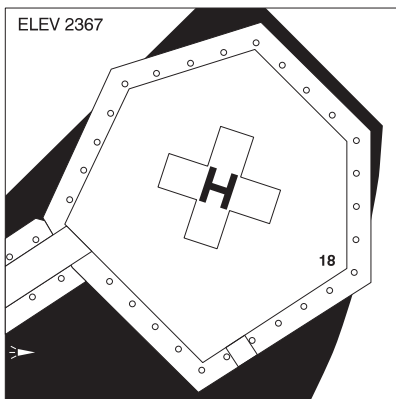
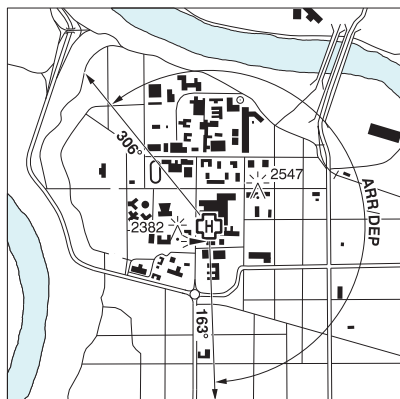
EDMONTON / NAMAQ HELI VFR TERMINAL PROCEDURES CHART



NAME	IDENT	LAT/LONG
NAMAQ	VCNMO	N53° 42' 56" W113° 29' 48"
ROMEO	VCRMO	N53° 43' 00" W113° 19' 00"

ALBERTA

AERODROME / FACILITY DIRECTORY

EDMONTON / UNIV OF ALBERTA (STOLLERY CHILDREN'S HOSP MAHI) AB (Heli) **CEW7**

REF	N53 31 13 W113 31 19 Adj SW 15°E (2013) UTC-7(6) Elev 2367' VTA A5015 CAP
OPR	Alberta Health Services 780-407-8657 Cert NVIS OPS AUTH PPR
PF	A-1,2,4 C-3,5,6
FLT PLN	
FIC	Edmonton 866-WXBRIEF (Toll free within Canada) or 866-541-4102 (Toll free within Canada & USA)
ACC	Edmonton IFR 888-358-7526
HELI DATA	FATO 86' dia TLOF 57' dia hexagonal concrete rooftop Safety Area 115' dia 18,000lbs Max heli overall length 57.4' (CAR 602.96)
RCR	Opr
LIGHTING	RY(ME) green PN ctc opr
COMM	
ATF	tfc 123.2 2NM below 4100 ASL
TML	Edmonton 127.4 4100 ASL and above
PRO	Arr/dep 306° to 163° fr heli (H1), day/night use (CAR 602.96). Edmonton Intl Class E airspace 3000 ASL (TRANSPONDER MANDATORY) and Class C airspace 4100 ASL and above overlies A/D. Acft operating in Edmonton Class C require a discrete transponder code which may be obtained by filing a flt pln or ctc 888-358-7526 at least 30 min prior to entering. Air traffic advsy freq 123.2 Edmonton City Area in Class G and E airspace.
CAUTION	Numerous bldgs to 2515' ASL E of helipad.