
FLIGHT PLAN & SITE SURVEY

A 11-5828 ROCKY BARNSTORMERS R/C CLUB- Fishers
Pit(Gravel Pit)

April 29, 2026



IMPORTANT NOTICE

Please ensure you have received all required authorizations prior to flight. This Site Survey was created using RPAS Wilco. The user accepts all responsibility for the accuracy of the information.

Terms & Conditions: rpswilco.com/#tnc

Mission Information

A 11-5828 ROCKY BARNSTORMERS R/C CLUB- FISHERS PIT(GRAVEL PIT)

FLIGHT DETAILS

Reference No:	MAAC-11-5828
Project Name:	ROCKY BARNSTORMERS R/C CLUB
Pilot Name:	MAAC
Pilot Certificate:	
Mission Type:	VLOS
Flight Start:	April 29, 2026 04:18 PM
Flight End:	April 29, 2026 05:18 PM

LOCATION DETAILS

Flight Address:	Fishers Pit(Gravel Pit)
Latitude:	52° 12' 37.44" N (52.21)
Longitude:	115° 0' 41.41" W (-115.012)
Altitude / Radius:	400 ft / 926.0 m (0.5 nm)
Classification:	UNCONTROLLED
FIR / Contact:	CZEG / 780-890-8397





REPORT CONTENTS

Site Survey • Obstacles (if available) • Nearby Aerodromes • Canadian Aviation Regulations • GFA • Aerodrome Supplements • METAR & TAF • NOTAMs • CFS

Flight Map & MODEL Details

MISSION LOCATION SURVEY

MISSION LOCATION DETAILS

ROLE	LATITUDE	LONGITUDE
 MODEL	52° 12' 37.44" N 52.21	115° 0' 41.41" W -115.012
 Pilot		
 Payload Op.		
 Observer		

Airspace Classification

MISSION LOCATION SURVEY

AIRSPACE MAP



OVERLYING AIRSPACES

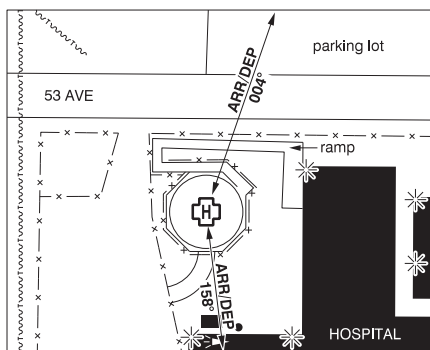
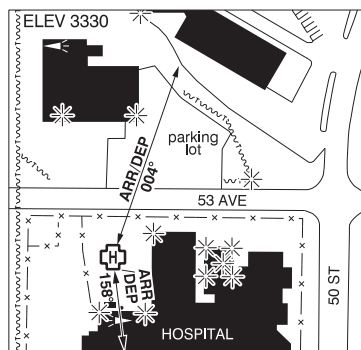
Class	Name	Floor	Ceiling
E	V306 VHF/UHF Airway	2200AGL	18000MSL
E	T743 Fixed RNAV Route	2200AGL	18000MSL

NEAREST AERODROMES & DISTANCE FROM OPERATION

ROCKY MOUNTAIN HOUSE (HEALTH CTR) (CEU4 - HELIPORT - Cert)	Lat: 52.379	Long: -114.921	19.732KM	10.65NM	N
ROCKY MOUNTAIN HOUSE (CYRM - AERODROME - Reg)	Lat: 52.429	Long: -114.904	25.382KM	13.71NM	N
CLEARWATER RIVER (CFS8 - AERODROME - Reg)	Lat: 51.988	Long: -115.228	28.814KM	15.56NM	SW

ROCKY MOUNTAIN HOUSE (HEALTH CTR) AB (Heli)

CEU4



REF	N52 22 44 W114 55 15 15°E (2013) UTC-7(6) Elev 3330' A5015
OPR	Alberta Health Services 888-999-3770 Cert NVIS OPS AUTH PPR
FLT PLN	
FC	Edmonton 866-WXBRIEF (Toll free within Canada) or 866-541-4102 (Toll free within Canada & USA)
ACC	Edmonton IFR 888-358-7526
HELI DATA	FATO 86' dia non-supporting TLOF 57' dia CONC Safety Area 115' dia Elevated heli 17,000 lbs Max heli overall length 57.4' (CAR 602.96)
LIGHTING	RY(ME) Yellow LED
COMM	
MF	Rocky Mountain House tfc 122.8 5NM centered on Rocky Mountain House A/D 3NM N 6300 ASL (CAR 602.98)
PRO	Arr/dep 004° fr heli, slope 6% (H3), day/night use (CAR 602.96). Arr/dep 158° fr heli (H1), NVIS rqrd for night use (CAR 602.96).
CAUTION	Unlgt'd p-lines aprx 150' NW thru 400' SW of heli and aprx 225' NNE of heli. Unlgt'd lamp post aprx 160' S of heli, 26' AAE.

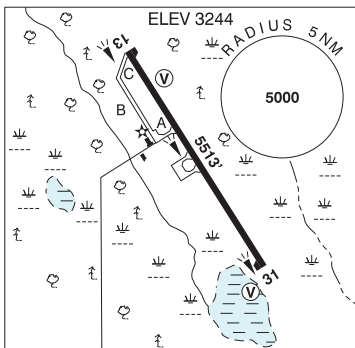
ALBERTA

AERODROME / FACILITY DIRECTORY

ROCKY MOUNTAIN HOUSE AB

CYRM

REF	N52 25 47 W114 54 15 3NNE 15°E (2014) UTC-7(6) Elev 3244' A5015 LO2 HI3 CAP
OPR	Town 403-845-4742 Reg
PF	B-7,8 C-1,2,3,4,5,6
FLT PLN	
FIC	Edmonton 866-WXBRIEF (Toll free within Canada) or 866-541-4102 (Toll free within Canada & USA)
ACC	Edmonton IFR 888-358-7526
WX	AUTO (see COMM) WxCam
SERVICES	
FUEL	100LL, JA (FSII avbl) Vertical Extreme Fuels 403-819-7285
S	1,4,5,6
RWY DATA	Rwy 13(132°)/31(312°) 5513x100 ASPH AGN IIIA
RCR	Opr CRFI Maint avbl 15-23Z† Mon-Fri exc hols O/T 2 hrs PN, call out chg may apply.
LIGHTING	13-(TE ME) V2, 31-(TE ME) V2 ARCAL-122.8 type K
COMM	
MF	tfc 122.8 5NM 6300 ASL (CAR 602.98)
PAL	Edmonton Ctr 134.3
AUTO	131.975
NAV	
VOR/DME	YRM 114.3 Ch 90 N52 30 08 W115 19 25 (3543')
CAUTION	Extv aerobatic activity overhead the aprt extending to 1NM E of rwy, sfc to 8000 ASL. Wildlife may be on or in vic rwy. Water bomber activity at or in vic of A/D Apr thru Sep. No line of sight btwn opposing rwy thlds



ALBERTA

AERODROME / FACILITY DIRECTORY

CLEARWATER RIVER AB

CFS8

REF	N51 59 17 W115 13 42 16°E (2012) UTC-7(6) Elev 4100' A5005
OPR	Olds-Didsbury Flying Association 403-556-0074, 403-335-2380 Reg PPR
PF	C-1,2
FLT PLN	
FIC	Edmonton 866-WXBRIEF (Toll free within Canada) or 866-541-4102 (Toll free within Canada & USA)
RWY DATA	Rwy 04(041°)/22(221°) 3300x75 GRASS
RCR	Opr No win maint. Ltd Sum maint
COMM	
ATF	tfc 123.2 5NM 7100 ASL
CAUTION	Deer, elk or moose may be on rwy.

