
FLIGHT PLAN & SITE SURVEY

B 48-3917 CAPE BRETON RADIO CONTROL MODELLERS-
MARGAREE AIRPORT

April 29, 2026



IMPORTANT NOTICE

Please ensure you have received all required authorizations prior to flight. This Site Survey was created using RPAS Wilco. The user accepts all responsibility for the accuracy of the information.

Terms & Conditions: rpswilco.com/#tnc

Mission Information

B 48-3917 CAPE BRETON RADIO CONTROL MODELLERS- MARGAREE AIRPORT

FLIGHT DETAILS

Reference No:	MAAC-48-3917
Project Name:	CAPE BRETON RADIO CONTROL MODELLERS
Pilot Name:	MAAC
Pilot Certificate:	
Mission Type:	VLOS
Flight Start:	April 29, 2026 07:20 PM
Flight End:	April 29, 2026 08:20 PM

LOCATION DETAILS

Flight Address:	MARGAREE AIRPORT
Latitude:	46° 20' 36.50" N (46.343)
Longitude:	60° 58' 53.00" W (-60.981)
Altitude / Radius:	400 ft / 926.0 m (0.5 nm)
Classification:	UNCONTROLLED
FIR / Contact:	CZQM / 506-867-7173





REPORT CONTENTS

Site Survey • Obstacles (if available) • Nearby Aerodromes • Canadian Aviation Regulations • GFA • Aerodrome Supplements • METAR & TAF • NOTAMs • CFS

Flight Map & MODEL Details

MISSION LOCATION SURVEY

MISSION LOCATION DETAILS

ROLE	LATITUDE	LONGITUDE
 MODEL	46° 20' 36.50" N 46.343	60° 58' 53.00" W -60.981
 Pilot		
 Payload Op.		
 Observer		

Airspace Classification

MISSION LOCATION SURVEY

AIRSPACE MAP



OVERLYING AIRSPACES

Class	Name	Floor	Ceiling
E	T735 Fixed RNAV Route	2200AGL	18000MSL

NEAREST AERODROMES & DISTANCE FROM OPERATION

BADDECK (GUNEDEN) (CDW2 - AERODROME - Reg)	Lat: 46.164	Long: -60.784	25.072KM	13.54NM	SE
INVERNESS(CONSOLIDATED MEMORIAL HOSPITAL) (CNV2 - HELIPORT - Reg)	Lat: 46.199	Long: -61.291	28.712KM	15.5NM	SW
CAPE GEORGE (CCG6 - WATERDROME - Reg)	Lat: 45.73	Long: -60.811	69.471KM	37.51NM	S

NOVA SCOTIA

AERODROME / FACILITY DIRECTORY

BADDECK (GUNEDEN) NS**CDW2**

REF	N46 09 51 W60 47 03 3.1N 18°W (2015) UTC-4(3) Elev 291' A5003 A5012	
OPR	Guneden Place Ltd. 902-295-8558 Reg PPR	
PF	B-1,2,5 C-3,4,6	
FLT PLN	FIC London 866-WXBRIEF (Toll free within Canada) or 866-541-4104 (Toll free within Canada & USA) ACC (IFR only) Moncton 506-867-7177 or 866-480-8200.	
SERVICES	FUEL 100LL S 4,5	
RWY DATA	Rwy 03(035°)/21(215°) 3000x60 GRVL	
RCR	Opr Ltd win maint, ctc opr	
COMM		
ATF	UNICOM ltd hrs O/T tfc 122.8 5NM 3300 ASL	
PRO	Rgt hand circuits Rwy 03 (CAR 602.96).	
CAUTION	Abrupt drop off thld Rwy 21, turbulence may be anticipated on apch to Rwy 21 under certain wind conds, be alert for seaplane activity in Baddeck Harbour 4.5NM SSE.	

NOVA SCOTIA

AERODROME / FACILITY DIRECTORY

INVERNESS (CONSOLIDATED MEM HOSP) NS (Heli)**CNV2**

REF	N46 11 58 W61 17 29 2S 19°W (2014) UTC-4(3) Elev 100' A5003	
OPR	Cape Breton District Health Authority 902-258-2100 Reg PPR	
FLT PLN		
FIC	London 866-WXBRIEF (Toll free within Canada) or 866-541-4104 (Toll free within Canada & USA)	
ACC	(IFR only) Moncton 506-867-7177 or 866-480-8200.	
HELI DATA	79' x 79' ASPH 108' x 108'	
LIGHTING	FH	
COMM		
ATF	tfc 123.2 5NM 3100 ASL	
PRO	Arr/dep path 297° fr heli.	
CAUTION	Unlgt'd p-line along roadway east of pad.	

CANADA WATER AERODROME SUPPLEMENT

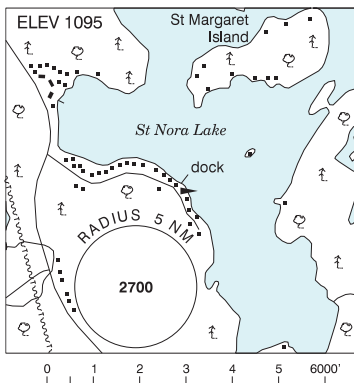
Effective 0901Z 19 March 2026 to 0901Z 18 February 2027

B224 AERODROME/FACILITY DIRECTORY

ST. NORA LAKE / COMAK LANDING ON

CNL7

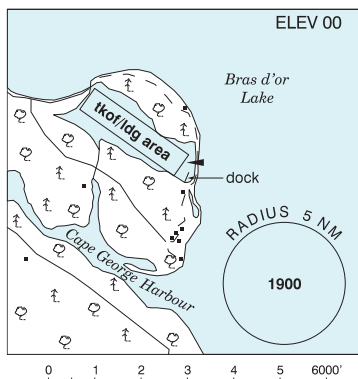
REF	N45 09 13 W78 50 02 6SSE Dorset 11°W (2024) UTC-5(4) Elev 1095' A5000
OPR	Brian Bissell 519-918-0044 Reg PPR
FLT PLN	FIG London 866-WXBRIEF (Toll free within Canada) or 866-541-4104 (Toll free within Canada & USA)
A/D DATA	Open water May 1-Oct 30.
DOCKS	Floating dock 10'x20
COMM	ATF tfc 123.2 5NM 4100 ASL
CAUTION	Hi Terrain. Boat tfc.



ST. PETER'S / CAPE GEORGE NS

CCG6

REF	N45 43 50 W60 48 38 5.2NE 18°W (2017) UTC-4(3) Elev 00' A5003
OPR	Michael Schinzig 902-535-2627 or 902-577-9304 Reg
PF	B-1 C-2,4,5
FLT PLN	FIG London 866-WXBRIEF (Toll free within Canada) or 866-541-4104 (Toll free within Canada & USA) ACC (IFR only) Moncton 506-867-7177 or 866-480-8200
SERVICES	S 7
A/D DATA	Open water Apr-Nov. Gravel/sand bottom. Dock & ramp.
COMM	ATF tfc 123.2 5NM 3000 ASL



CANADA WATER AERODROME SUPPLEMENT

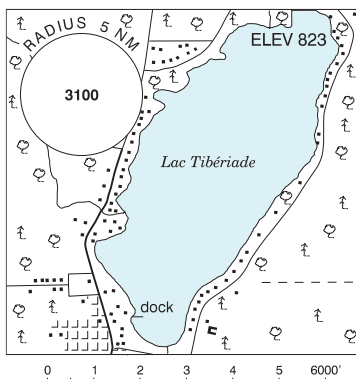
Effective 0901Z 19 March 2026 to 0901Z 18 February 2027

AERODROME/FACILITY DIRECTORY B225

STE-VÉRONIQUE QC

CSW9

REF	N46 30 56 W74 59 19 Adj NNE 15°W UTC-5(4) Elev 823' A5002
OPR	Air Mt-Laurier 1985 819-275-2794 Reg PPR
PF	B-1,2,3,5 C-6 D-4
FLT PLN	(bil) FIG Québec 866-GOMÉTÉO or 866-WXBRIEF (Toll free within Canada) or 866-541-4105 (Toll free within Canada & USA)
SERVICES	FUEL 100LL OIL 80, 100 S 1,2,5
A/D DATA	Open water May-mid Nov. Sandy beach.
COMM	ATF tfc 123.2 5NM 3900 ASL A/G 122.9 5460 SSB (Co)
PRO	Avoid overflight of village & beach below 1000 AGL.
CAUTION	P-lines 0.5NM N.



ST. WALERAN ISLAND ON — See PARRY SOUND / ST. WALERAN ISLAND

SAGUENAY (HARVEY) QC

CSA8

REF	N48 26 23 W71 07 46 2.5NM WNW 17°W (2014) UTC-5(4) Elev 30' A5010
OPR	10289221 Canada Inc. 514-797-6725 Reg PPR
PF	C-1,2,3,4,5,6
FLT PLN	(bil) FIG Québec 866-GOMÉTÉO or 866-WXBRIEF (Toll free within Canada) or 866-541-4105 (Toll free within Canada & USA)
SERVICES	S 5,7
A/D DATA	Open water May-Nov. Dock depth 3' during low tide. Tidal range 12', current 3 kt. Rocks and shoal unmarked at low tide along the shore.
COMM	TWR Bagotville 126.2 VFR ADV Bagotville Tml 121.2 A/G 122.925

