

---

# FLIGHT PLAN & SITE SURVEY

---

B 165-4150 RIVERSIDE MODELLING ASSOCIATION-  
STEEVES ST. HILLSBOROUGH

April 29, 2026



**IMPORTANT NOTICE**

Please ensure you have received all required authorizations prior to flight. This Site Survey was created using RPAS Wilco. The user accepts all responsibility for the accuracy of the information.

Terms & Conditions: [rpaswilco.com/#tnc](https://rpaswilco.com/#tnc)

# Mission Information

B 165-4150 RIVERSIDE MODELLING ASSOCIATION- STEEVES ST. HILLSBOROUGH

## FLIGHT DETAILS

Reference No:	<b>MAAC-165-4150</b>
Project Name:	<b>RIVERSIDE MODELLING ASSOCIATION</b>
Pilot Name:	<b>MAAC</b>
Pilot Certificate:	
Mission Type:	<b>VLOS</b>
Flight Start:	<b>April 29, 2026 07:26 PM</b>
Flight End:	<b>April 29, 2026 08:26 PM</b>

## LOCATION DETAILS

Flight Address:	<b>STEEVES ST. HILLSBOROUGH</b>
Latitude:	<b>45° 55' 24.49" N ( 45.923 )</b>
Longitude:	<b>64° 38' 15.85" W ( -64.638 )</b>
Altitude / Radius:	<b>400 ft / 926.0 m ( 0.5 nm)</b>
Classification:	<b>UNCONTROLLED</b>
FIR / Contact:	<b>CZQM / 506-867-7173</b>





## REPORT CONTENTS

Site Survey • Obstacles (if available) • Nearby Aerodromes • Canadian Aviation Regulations • GFA • Aerodrome Supplements • METAR & TAF • NOTAMs • CFS

# Flight Map & MODEL Details

MISSION LOCATION SURVEY

## MISSION LOCATION DETAILS

ROLE	LATITUDE	LONGITUDE
 MODEL	45° 55' 24.49" N 45.923	64° 38' 15.85" W -64.638
 Pilot		
 Payload Op.		
 Observer		

# Airspace Classification

MISSION LOCATION SURVEY

## AIRSPACE MAP



## OVERLYING AIRSPACES

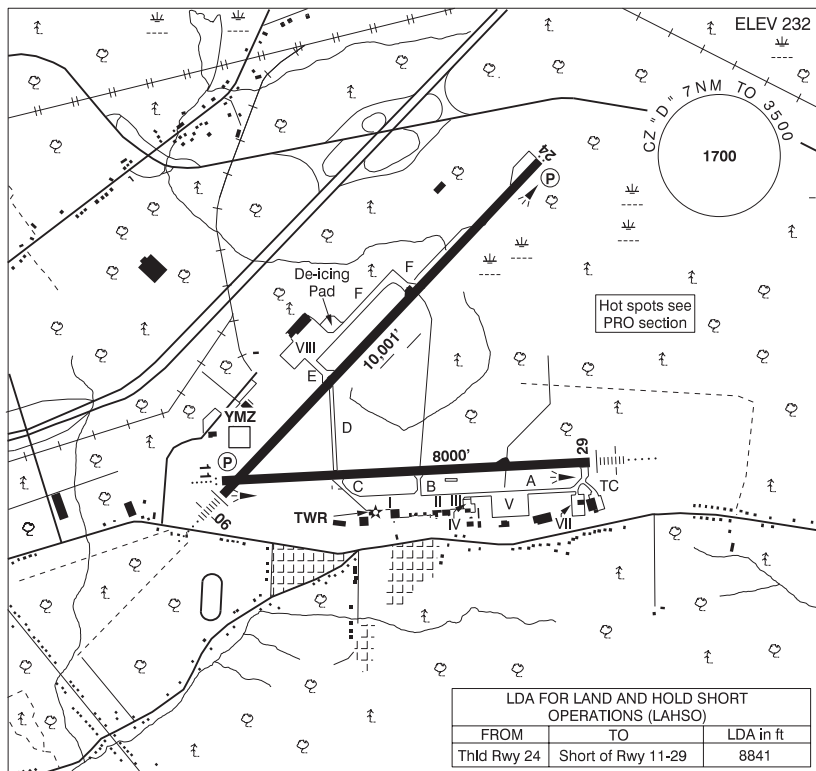
Class	Name	Floor	Ceiling
E	Moncton/Greater Moncton Intl, NB [TA]	700AGL	1800MSL
E	Moncton, NB a) [TSP]	1800MSL	3000MSL
E	Moncton, NB b) [TSP]	3000MSL	12500MSL

## NEAREST AERODROMES & DISTANCE FROM OPERATION

GREATER MONCTON ROMEO LEBLANC INTL (CYQM - AERODROME - Cert)	Lat: 46.116	Long: -64.678	21.633KM	11.68NM	N
MCEWEN (CCG4 - AERODROME - Reg)	Lat: 46.154	Long: -64.769	27.564KM	14.88NM	N
CORMIER (CRM4 - AERODROME - Reg)	Lat: 46.181	Long: -64.376	35.043KM	18.92NM	NE

**MONCTON / GREATER MONCTON ROMÉO LEBLANC INTL NB**

**CYQM**



<b>REF</b>	N46 06 58 W64 40 43 4ENE 18°W (2013) UTC-4(3) Elev 232' A5003 LO8 HI6 T2 CAP OC
<b>OPR</b>	Greater Moncton International Airport Authority Inc 506-856-5444 0845-0415‡ O/T 2 hr PN call out charge Cert
<b>PF</b>	A-1,2,6 C-3,4,5
<b>CUST</b>	AOE/300 888-226-7277 12-04Z‡
<b>FLT PLN</b>	
<b>FIC</b>	London 866-WXBRIEF (Toll free within Canada) or 866-541-4104 (Toll free within Canada & USA)
<b>ACC</b>	(IFR only) Moncton 506-867-7177 or 866-480-8200.
<b>WX</b>	METAR H24 TAF H24, issue times: 00, 06, 12, 18Z

## NEW BRUNSWICK

## AERODROME / FACILITY DIRECTORY

**MONCTON / GREATER MONCTON ROMÉO LEBLANC INTL NB (Cont'd) CYQM**

<b>SERVICES</b>	Call out chg may be levied for one or more svcs.
<b>FUEL</b>	100LL, JA-1 (FSII avbl) PN ASIG 506-857-9140
<b>OIL</b>	All
<b>S</b>	1,2
<b>ARFF</b>	DESIGNATED CAT 6 (CAT 7 2 hr PN) 0845-0415‡ O/T 2 hr PN call out chg.
<b>SUP FL</b>	O & D-ice
<b>JASU</b>	(Hobart 1400 amp 30-40 volts), Elect Start 10/25, GTC/GTE-85 & NC-10A/A1/B/C
<b>PVT ADV</b>	Shell Aerocentre 122.15, ATS 131.75 Moncton Flight College 123.5 (Ltd hrs) Air Canada gnd hldg 130.37 506-857-1065 Skylink Express 131.37, ltd hangarage avbl
<b>MIL CON</b>	ASIG Canada 506-857-9140
<b>RWY DATA</b>	Rwy 06(061°)/24(241°) 10,001x200 ASPH Rwy 11(106°)/29(286°) 8000x200 ASPH RESA: All Rwy 492'
<b>RWY CERT</b>	Rwy 06 RVR 1200(1/4sm)/Rwy 24 RVR 1200(1/4sm) AGN V Rwy 11 RVR 1200(1/4sm)/Rwy 29 RVR 1200(1/4sm) AGN V
<b>TWY CERT</b>	Twy: A, B, C, D AGN IV
<b>APRON</b>	Acft manoeuvring on apron VIII must maintain a listening watch & are to broadcast their movement intentions on Apron VIII Advisory 122.075. Itinerant acft wishing to use Apron VIII ctc Airport Security 506-856-5429 - 2 hr PN. Apron IV (Moncton Flight College) restricted to acft 8,000 lbs or less.
<b>RCR</b>	Opr 506-850-8430 11-19Z‡ Mon-Fri exc hols O/T 2 hrs PN, call out charge. CRFI/RSC, PCN
<b>LIGHTING</b>	06-AN(TE HI), 24-AS(TE HI) P3 3.1°, 11-AO(TE HI) P3 3.1°, 29-AN(TE HI)
<b>COMM</b>	
<b>RCO</b>	London rdo 122.5 (FISE) 126.7 (bcst)
<b>ATIS</b>	128.65
<b>APRON ADV</b>	Apron VIII 122.075
<b>GND</b>	121.8 275.8
<b>TWR</b>	120.8 236.6 (E) (emerg only 506-867-7220)
<b>ARR</b>	124.4
<b>DEP</b>	124.4
<b>PAL</b>	124.4 127.125 132.2
<b>NAV</b>	
<b>DME</b>	YMZ 117.0 Ch 117 N46 06 33 W64 41 33 (233')
<b>ILS</b>	IQM 109.3 (Rwy 29) RVR IFG 109.7 (Rwy 06) RVR
<b>PRO</b>	De-icing apron VIII - Prior to pushback, broadcast intentions & monitor all movements on Apron Advisory 122.075. Proceed to de-icing pad. Pilots should refer to Canadian Airport Charts (CAC) to obtain details on established hot spots, prior to operating on maneuvering areas. CAC are available for free on the NAV CANADA website.
<b>CAUTION</b>	Training areas around CZ, see Moncton VTPC - Training areas.

## NEW BRUNSWICK

## AERODROME / FACILITY DIRECTORY

## MONCTON / McEWEN NB

CCG4

<b>REF</b>	N46 09 14 W64 46 07 Adj 3N 18°W (2015) UTC-4(3) Elev 214' A5003	
<b>OPR</b>	Heritage Management 506-853-1918 Reg PPR	
<b>PF</b>	A-1 C-2,3,4,5,6	
<b>FLT PLN</b>		
<b>FIC</b>	London 866-WXBRIEF (Toll free within Canada) or 866-541-4104 (Toll free within Canada & USA)	
<b>ACC</b>	(IFR only) Moncton 506-867-7177 or 866-480-8200.	
<b>RWY DATA</b>	Rwy 08/26 3000x80 ASPH/GRASS, centre 35' ASPH Thld 08 displ 395'.	
<b>RCR</b>	Opr Ltd win maint	
<b>LIGHTING</b>	08-(TE LO), 26-(TE LO)	
<b>COMM</b>		
<b>TWR</b>	Moncton 120.8 236.6 (E) at Moncton A/D 4.4NM SE	
<b>PRO</b>	Rgt hand circuit Rwy 26 (CAR 602.96). IFR dep clnc ctc Moncton gnd 121.8. Ctc Moncton twr prior to dep.	
<b>CAUTION</b>	Grass area of rwy soft when wet. Training areas around A/D, see Moncton VTPC - Training areas. Blasting ops aprx 4NM WNW of A/D Mon-Fri (N46 09 42 W64 52 38 to N46 10 00 W64 51 14 to N46 10 08 W64 51 18 to N46 10 20 W64 51 49 to N46 09 53 W64 52 42 to N46 09 42 W64 52 38) sfc up to 820 ASL.	

## NEW BRUNSWICK

## AERODROME / FACILITY DIRECTORY

## CORMIER NB

CRM4

<b>REF</b>	N46 10 51 W64 22 32 1.1NW 18°W (2015) UTC-4(3) Elev 84' A5003
<b>OPR</b>	George Cormier 902-748-2434 Reg PPR
<b>PF</b>	C-1,2,3,5
<b>FLT PLN</b>	
<b>FIC</b>	London 866-WXBRIEF (Toll free within Canada) or 866-541-4104 (Toll free within Canada & USA)
<b>RWY DATA</b>	Rwy 08(075°)/26(255°) 3000x80 GRASS
<b>RCR</b>	Opr
<b>COMM</b>	
<b>ATF</b>	tfc 123.2 5NM 3100 ASL

