
FLIGHT PLAN & SITE SURVEY

B 30-5739 SAINT JOHN MODEL FLYING CLUB- Forest Hill
School

April 29, 2026



IMPORTANT NOTICE

Please ensure you have received all required authorizations prior to flight. This Site Survey was created using RPAS Wilco. The user accepts all responsibility for the accuracy of the information.

Terms & Conditions: rpswilco.com/#tnc

Mission Information

B 30-5739 SAINT JOHN MODEL FLYING CLUB- FOREST HILL SCHOOL

FLIGHT DETAILS

Reference No:	MAAC-30-5739
Project Name:	SAINT JOHN MODEL FLYING CLUB
Pilot Name:	MAAC
Pilot Certificate:	
Mission Type:	VLOS
Flight Start:	April 29, 2026 07:19 PM
Flight End:	April 29, 2026 08:19 PM

LOCATION DETAILS

Flight Address:	Forest Hill School
Latitude:	45° 18' 53.13" N (45.315)
Longitude:	66° 0' 22.25" W (-66.006)
Altitude / Radius:	400 ft / 926.0 m (0.5 nm)
Classification:	CONTROLLED
FIR / Contact:	CZQM / 506-867-7173

NOTES

Your flight is in controlled airspace.
If your RPAS is > 250g, please obtain RPAS Flight Authorization using the NavDrone app or by contacting NavCanada. (CARs 901.71)





REPORT CONTENTS

Site Survey • Obstacles (if available) • Nearby Aerodromes • Canadian Aviation Regulations • GFA • Aerodrome Supplements • METAR & TAF • NOTAMs • CFS

Flight Map & MODEL Details

MISSION LOCATION SURVEY

MISSION LOCATION DETAILS

ROLE	LATITUDE	LONGITUDE
 MODEL	45° 18' 53.13" N 45.315	66° 0' 22.25" W -66.006
 Pilot		
 Payload Op.		
 Observer		

Airspace Classification

MISSION LOCATION SURVEY

AIRSPACE MAP



OVERLYING AIRSPACES

Class	Name	Floor	Ceiling
E	Saint John, NB [TA]	700AGL	18000MSL
E	Saint John, NB [CZ]	SFC	3000GND

NEAREST AERODROMES & DISTANCE FROM OPERATION

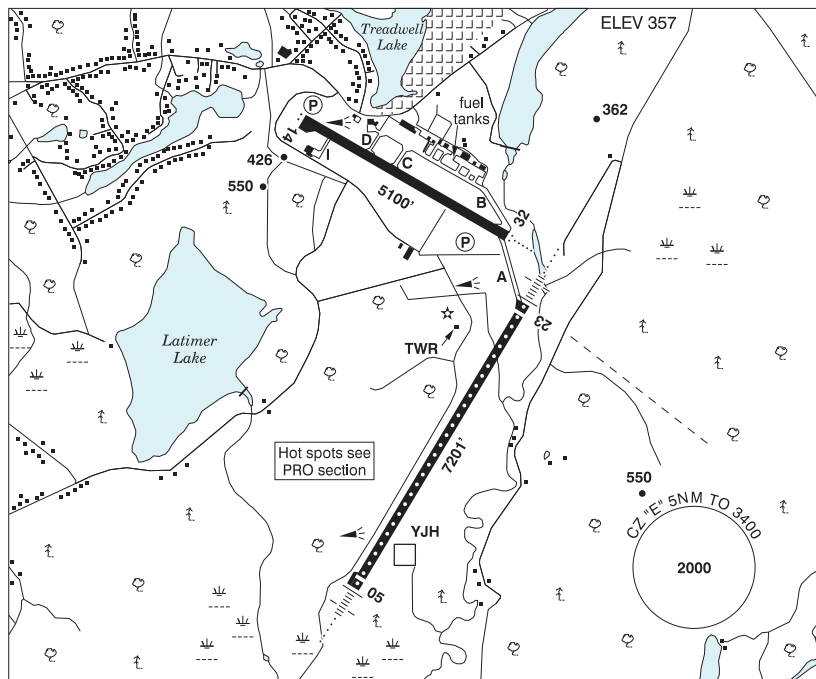
SAINT JOHN (CYSJ) - AERODROME - Cert)	Lat: 45.316	Long: -65.89	9.086KM	4.91NM	E
SAINT JOHN (SAINT JOHN REGIONAL HOSPITAL) (CSN6 - HELIPORT - Cert)	Lat: 45.302	Long: -66.088	6.554KM	3.54NM	W
JENKINS COVE (CJO3 - WATERDROME - Reg)	Lat: 45.594	Long: -65.957	31.287KM	16.89NM	N

NEW BRUNSWICK

AERODROME / FACILITY DIRECTORY

SAINT JOHN NB

CYSJ



REF	N45 18 57 W65 53 24 8ENE 18°W (2014) UTC-4(3) Elev 357' A5003 LO8 HI6 CAP OC
OPR	Saint John Airport Inc 506-638-5555 0930-0359Z± Cert
PF	A-1,2,3,6,7 09-04Z± C-4,5
CUST	AOE/120 (140 with staged off-loading) 888-226-7277 12-04Z±
FLT PLN	<p>FIC London 866-WXBRIEF (Toll free within Canada) or 866-541-4104 (Toll free within Canada & USA)</p> <p>ACC (IFR only) Moncton 506-867-7177 or 866-480-8200.</p> <p>WX METAR H24 TAF H24, issue times: 00, 06, 12, 18Z</p>
SERVICES	Call out chg may be levied for one or more svcs
FUEL	100LL H24 self-serve, JA (FSII avbl) 12-21Z± Mon-Fri, JA-1 (FSII avbl) 08-24Z±
OIL	All
S	1(ltd, for lgt acft),2,4,5,6
ARFF	PARTICIPATING CAT 5 10-04Z±, O/T call out chg.
JASU	CE8, CA2
PVT ADV	Atlantic Flt Centre 123.3 12-21Z± Mon-Fri 506-634-5565 O/T 506-650-8402, exc hols; Air Canada Ground Handling 130.37 506-632-1524
MIL CON	ASIG Canada (Irving Oil) 506-653-7409

NEW BRUNSWICK

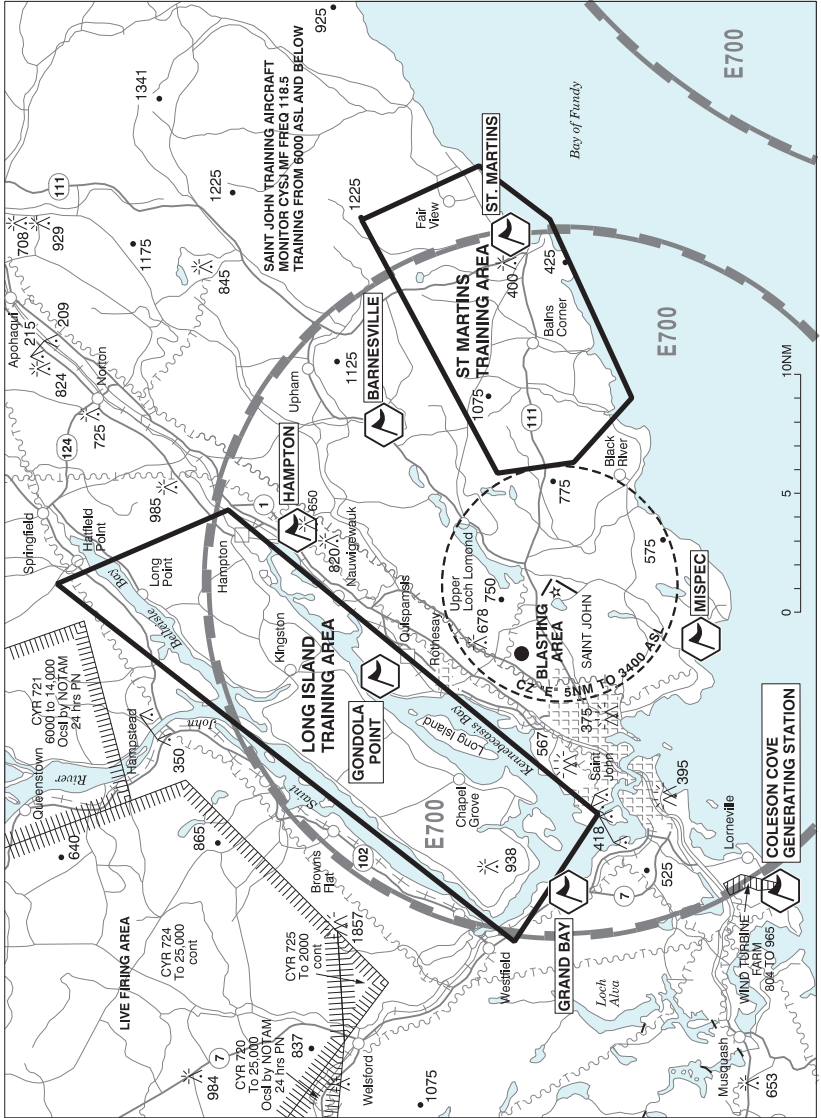
AERODROME / FACILITY DIRECTORY

SAINT JOHN NB (Cont'd)

CYSJ

RWY DATA	Rwy 05(049°)/23(229°) 7201x148 ASPH Thlds 05 & 23 displ 197' Rwy 14(138°)/32(318°) 5100x148 ASPH Rwy 14 down 0.84% Rwy 14/32 avbl as twy dur night when Rwy 05/23 RVR 1200(1/4sm) down to 600(1/8sm) RESA: All Rwys 492'
RWY CERT	Rwy 05 RVR 600(1/8sm)/Rwy 23 RVR 600(1/8sm) AGN IV Rwy 14 RVR 1200(1/4sm)/Rwy 32 RVR 1200(1/4sm) AGN IV
TWY CERT	Twy I AGN IIIB
TWY	Twy I Pvt
RCR	Opr CRFI and win maint avbl ltd hrs. PCN
LIGHTING	05-AN(TE HI CL), 23-AN(TE HI CL), 14-AS(TE ME) P2, 32-AO(TE ME) P2
COMM	
RADIO	118.5 236.6 PTC avbl (E) (emerg only 506-646-7225)
RCO	London rdo 123.475 (FISE) 126.7 (bcst)
MF	rdo 118.5 5NM 3400 ASL (CAR 602.98)
PAL	Moncton Ctr 124.3 135.5 270.8
NAV	
DME	YJH 112.2 Ch 59 N45 18 15 W65 53 28 (312')
ILS	ISJ 110.5 (Rwy 23) RVR IDM 108.3 (Rwy 05) RVR
PRO	Pursuant to CAR 602.96, in vis conds blw 1/8sm with an RVR of 600 or greater, an IFR clnc must be obtained prior to taxiing for dep and acft are not auth to taxi when another acft is on the maneuvering area, or on apch to any rwy. Ctc CYSJ FSS for tfc status. Pilots should refer to Canadian Airport Charts (CAC) to obtain details on established hot spots, prior to operating on maneuvering areas. CAC are available for free on the NAV CANADA website. Reduced/Low Visibility Procedures: See CAP Tkof and ldg in grass adj rwys or twys by fixed-wing acft not auth.

SAINT JOHN VFR TERMINAL PROCEDURES CHART - TRAINING AREAS



NEW BRUNSWICK

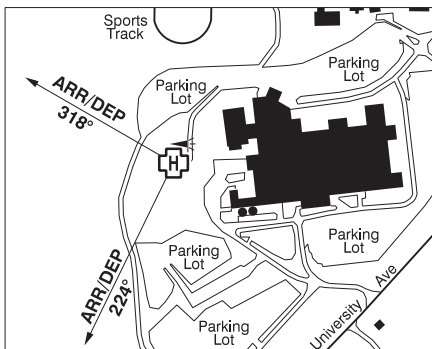
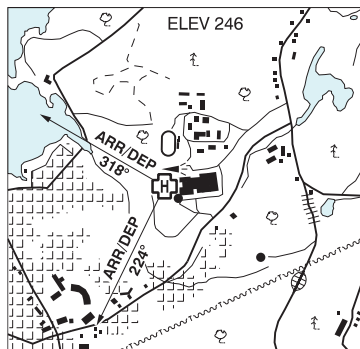
AERODROME / FACILITY DIRECTORY

SAINT JOHN VFR TERMINAL PROCEDURES CHART - TRAINING AREAS (Cont'd)

NAME	IDENT	LAT/LONG
BARNESVILLE	VCBRN	N45° 26' 30" W065° 44' 00"
COLESON COVE GENERATING STATION	VCCGS	N45° 09' 18" W066° 12' 00"
GONDOLA POINT	VCGON	N45° 26' 12" W065° 59' 00"
GRAND BAY	VCBAY	N45° 18' 42" W066° 11' 36"
HAMPTON	VCHPN	N45° 29' 42" W065° 50' 06"
MISPEC	VCMIS	N45° 12' 48" W065° 56' 48"
ST. MARTINS	VCSTM	N45° 20' 54" W065° 32' 48"

SAINT JOHN (SAINT JOHN REGIONAL HOSPITAL) NB (Heli)

CSN6



REF	N45 18 08 W66 05 17 1.5N 18°W (2013) UTC-4(3) Elev 246' A5003
OPR	Saint John Regional Hospital Atlantic Health Sciences Corp 506-648-6614 Cert PPR
FLT PLN	
FIC	London 866-WXBRIEF (Toll free within Canada) or 866-541-4104 (Toll free within Canada & USA)
ACC	(IFR only) Moncton 506-867-7177 or 866-480-8200.
HELI DATA	FATO/TLOF 92' x 92' ASPH Safety Area 122' x 122' Max heli overall length 61' Rstd to medevac & govt use
RCR	Opr Ltd win maint
LIGHTING	RF(FL)
COMM	
RCO	London rdo 123.475 (FISE) 126.7 (bcst)
ATF	tfc 123.2 5NM 3300 ASL
PRO	Arr/dep 318° and 224° fr heli, slope 8% (H3)
CAUTION	Lgtd smokestack 377 ASL (126 AGL) 490' SE fr heli. Lgtd smokestack 405 ASL (205 AGL) aprx 440' SE fr heli. Lgtd windsock 149' NE fr heli.

CANADA WATER AERODROME SUPPLEMENT

Effective 0901Z 19 March 2026 to 0901Z 18 February 2027

B92 AERODROME/FACILITY DIRECTORY

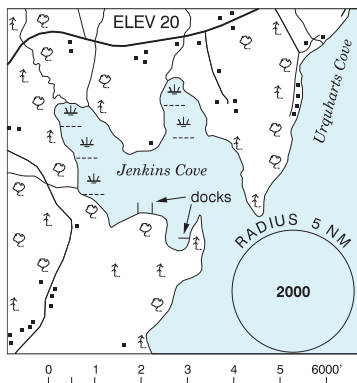
KAMLOOPS FSS – RCO

Victoria 119.7 (RAAS) 08-14Z† (N48 38 W123 25)

KARS / JENKINS COVE NB

CJO3

REF	N45 35 38 W65 57 25 1.3ESE 17°W (2017) UTC-4(3) Elev 20' A5003
OPR	Richard Pattie 506-485-1122 Reg
PF	B-1 C-2,5
FLT PLN	<p>FIG London 866-WXBRIEF (Toll free within Canada) or 866-541-4104 (Toll free within Canada & USA)</p> <p>ACC (IFR only) Moncton 506-867-7177 or 866-480-8200.</p>
SERVICES	
S	5
A/D DATA	Open water May-Dec
COMM	
ATF	tfc 123.05 5NM 3000 ASL



KASBA LAKE NT

CJP5

REF	N60 17 W102 31 7°E (2013) UTC-6(5) Elev 1089' A5024 A5031
OPR	Kasba Lake Lodge 250-248-3572 Reg PPR
PF	B-1,2,5 PN Oprg Jun15-Sep 1
FLT PLN	<p>FIG Edmonton 866-WXBRIEF (Toll free within Canada) or 866-541-4102 (Toll free within Canada & USA)</p>
SERVICES	
FUEL	100LL, JA Prior amg thru Opr Jun 15 - Aug 15
A/D DATA	Open water Jun-Oct. Sand beach.
COMM	
ATF	UNICOM ltd hrs O/T tfc 122.8 5NM 4200 ASL

