
FLIGHT PLAN & SITE SURVEY

C 230-5758 PENTICTON MODEL AVIATION CLUB- Osoyoos
Airfield

April 29, 2026



IMPORTANT NOTICE

Please ensure you have received all required authorizations prior to flight. This Site Survey was created using RPAS Wilco. The user accepts all responsibility for the accuracy of the information.

Terms & Conditions: rpaswilco.com/#tnc

Mission Information

C 230-5758 PENTICTON MODEL AVIATION CLUB- OSOYOOS AIRFIELD

FLIGHT DETAILS

Reference No:	MAAC-230-5758
Project Name:	PENTICTON MODEL AVIATION CLUB
Pilot Name:	MAAC
Pilot Certificate:	
Mission Type:	VLOS
Flight Start:	April 29, 2026 03:29 PM
Flight End:	April 29, 2026 04:29 PM

LOCATION DETAILS

Flight Address:	Osoyoos Airfield
Latitude:	49° 2' 14.35" N (49.037)
Longitude:	119° 29' 27.28" W (-119.491)
Altitude / Radius:	400 ft / 926.0 m (0.5 nm)
Classification:	UNCONTROLLED
FIR / Contact:	CZVR / 604-586-4500





REPORT CONTENTS

Site Survey • Obstacles (if available) • Nearby Aerodromes • Canadian Aviation Regulations • GFA • Aerodrome Supplements • METAR & TAF • NOTAMs • CFS

Flight Map & MODEL Details

MISSION LOCATION SURVEY

MISSION LOCATION DETAILS

ROLE	LATITUDE	LONGITUDE
 MODEL	49° 2' 14.35" N 49.037	119° 29' 27.28" W -119.491
 Pilot		
 Payload Op.		
 Observer		

Airspace Classification

MISSION LOCATION SURVEY

AIRSPACE MAP



OVERLYING AIRSPACES

Class	Name	Floor	Ceiling
E	3.1.2-48 [CAE]	9000AGL	18000MSL
E	T261 Fixed RNAV Route	2200AGL	18000MSL

NEAREST AERODROMES & DISTANCE FROM OPERATION

OSOYOOS (CBB9 - AERODROME - Reg)	Lat: 49.037	Long: -119.489	0.144KM	0.08NM	E
OLIVER (CAU3 - AERODROME - Reg)	Lat: 49.173	Long: -119.551	15.708KM	8.48NM	N
PENTICTON (CYYF - AERODROME - Cert)	Lat: 49.463	Long: -119.602	48.015KM	25.93NM	N

BRITISH COLUMBIA

AERODROME / FACILITY DIRECTORY

OSOYOOS BC

CBB9

REF	N49 02 14 W119 29 20 Adj 16°E (2015) UTC-8(7) Elev 1100' aprx A5005	
OPR	Town 250-495-6515 Reg	
PF	C-1,2,3,4,5 D-6	
FLT PLN	FIC Kamloops 866-WXBRIEF (Toll free within Canada) or 866-541-4101 (Toll free within Canada & USA)	
SERVICES	S 5	
RWY DATA	Rwy 12/30 2477x50 asphalt RCR 250-495-6213 No win maint	
COMM	RCO Pacific rdo (Oliver) 125.85 (FISE) 126.7 (bcst) ATF tfc 123.2 2NM 2600 ASL	
PRO	Rgt hand circuits Rwy 30 (CAR 602.96).	
CAUTION	P-line across apch to Rwy 30. Rdo-controlled model acft aprx 200' W of rwy. Dirt ridge parallels rwy on W side aprx 15-20' fr rwy. Due to high terrain, it is recommended pilots proceeding E or W under VFR, attain an alt of 5,000' (ASL) min before leaving the Okanagan Valley.	

BRITISH COLUMBIA

AERODROME / FACILITY DIRECTORY

OLIVER BC

CAU3

REF	N49 10 24 W119 33 04 Adj S 16°E (2015) UTC-8(7) Elev 1015' A5005 LO2	
OPR	Town 250-485-6200 APM 250-535-0395 Reg	
PF	A-1 B-2,5 C-3,4,6	
FLT PLN	FIG Kamloops 866-WXBRIEF (Toll free within Canada) or 866-541-4101 (Toll free within Canada & USA) WX WxCam	
SERVICES	FUEL 100LL (APM), JA-1 (FSII avbl) Aurora Helicopters Ltd. 866-743-5588. Full/Self-serve, Visa/Mastercard. OIL All S 2,4,5	
RWY DATA	Rwy 01/19 3355x50 asphalt Thld 01 displ 744' Rwy 19 up 0.75% first 1600'	
RCR	APM 17-01Z† Ltd win maint	
LIGHTING	01-(TE LO) AP 4°, 19-(TE LO) APAPI limitation/restriction. APAPI Rwy 01 to be used only within 3NM of thld ARCAL-122.8 type J.	
COMM	RCO Pacific rdo 125.85 (FISE) 126.7 (bcst) ATF UNICOM 122.8 2NM 2500 ASL	
PRO	Rgt hand circuits Rwy 01 (CAR 602.96).	
CAUTION	Only pilots familiar with lcl terrain should use this A/D at ngt. A/D lctd in narrow mtn valley with unlgtd high terrain E & W of aprt. Migratory bird act in vic of A/D. Due to high terrain, it is recommended pilots proceeding E or W under VFR, attain an alt of 5,000' (ASL) min before leaving the Okanagan Valley. Hi terrain reduces operational length of Rwy 01 APAPI. Grass tkof/ldg area 2000' x 40' adj E Rwy 01/19 no win maint, use at own risk. Extv glider ops within 3NM on wknds Apr-Oct.	

BRITISH COLUMBIA

AERODROME / FACILITY DIRECTORY

PENTICTON BC

CYFF

REF	N49 27 45 W119 36 08 1.8SW 16°E (2015) UTC-8(7) Elev 1130' A5004 A5005 LO2 HI3 CAP RCAP	
OPR	TC APM 250-809-4596 Admin 250-770-4422 1600-0030Z† Mon-Fri exc hols H24 Cert	
PF	A-2,3,6,7,8 B-5 C-4	
CUST	AOE/30 (120 with staged off-loading) CANPASS 1-888-226-7277 1630-0030Z† Mon-Fri	
FLT PLN	<p>FIC Kamloops 866-WXBRIEF (Toll free within Canada) or 866-541-4101 (Toll free within Canada & USA)</p> <p>WX METAR H24. TAF H24, issue times: 01, 07, 13, 19Z.</p>	
SERVICES	<p>FUEL 100LL, JA-1 14-05Z† Mon-Fri 15-04Z† Sat-Sun</p> <p>OIL 80, 100, 120, 15W50</p> <p>S 1,2</p> <p>JASU CE15 Executive Aviation 250-715-5345</p> <p>MILCON Executive Flight Centre Fuel 250-493-5323</p>	
RWY DATA	Rwy 16(165°)/34(345°) 6000x149 ASPH Thld 34 displ 300'.	
RWY CERT	Rwy 16/34 AGN IIIB	
APRON	GA prkg on apron N of tml only. Park on N and NE edges. Non-wheeled heli prkg avbl on grass N of main apron. Itinerant pilot and pax access via Gate 88. Lgt acft prkg avbl off Twy A, S end. PPR required for all prkg - request via yyf.vortexcms.com/ppr . Prkg fees. Wildfire Heli Ops: Staging and extended prkg on grass N of tml and maint fac, and S of Air Tanker Base along W fence. Apron II: Pvt	
RCR	Opr Ltd win maint 15-01Z† Mon-Fri, 17Z† & 23Z† Sat-Sun & hols Nov 1-Mar 31, O/T 2 hr PN call out chg may be levied. CRFI, PCN	
LIGHTING	16-AO(TE ME) P2, 34-AS(TE ME) P2 PAPI limitation/restriction. PAPI Rwy 34 to be used only within 2NM of thld. ARCAL-118.5 type K avbl when FSS clsd.	
COMM	<p>RADIO 118.5 PTC avbl (V) (emerg only 250-492-3001)</p> <p>GND ADV 121.9 (emerg only 250-492-3001)</p> <p>MF rdo 118.5 5NM 4100 ASL (CAR 602.98)</p>	
NAV	<p>DME IYF 110.3 Ch 40 N49 27 09 W119 36 14 (1134')</p> <p>LOC IYF 110.3 (Rwy 16)</p>	

BRITISH COLUMBIA

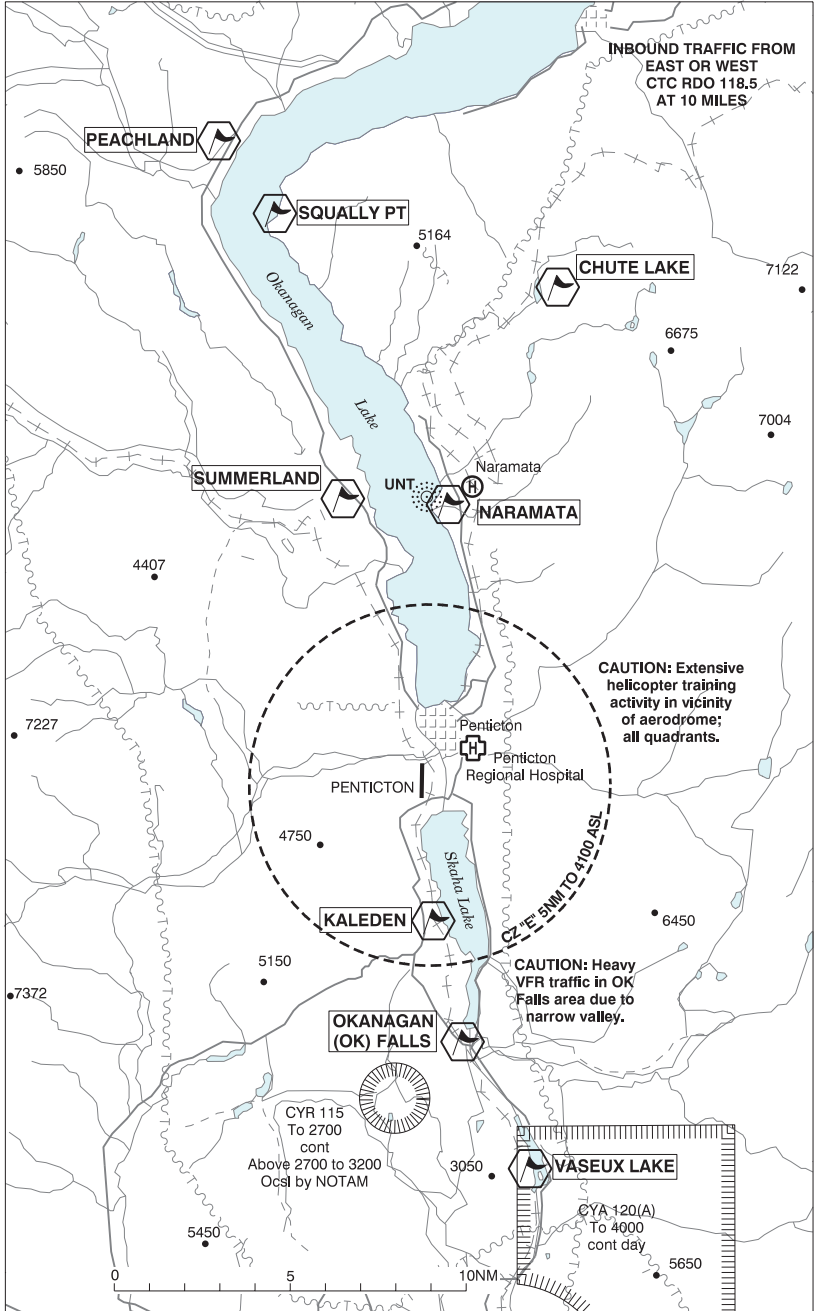
AERODROME / FACILITY DIRECTORY

PENTICTON BC (Cont'd)

CYYF

PRO	<p>Inbd tfc see VTPC; for night circuit pro see Night Circuit VTPC. Circuit hgt 2300 ASL. Rgt hand circuits Rwy 34 (CAR 602.96). Heli tng all quadrants, circuits E & W of A/D at 2300 ASL.</p> <p>GROUND ADVISORY: The Minister has authorized specific operating restrictions regarding communications intended for the MF, as well as the introduction of a Ground Advisory frequency (GND ADV) pursuant to CARs 602.97(2), 602.98(1) and 602.99.</p> <p>Departure procedure: Prior to taxi for departure; contact GND ADV on 121.9 for clearance and initial advisory information. After receiving initial advisory information, GND ADV will initiate communication transfer to RADIO on 118.5 prior to entering the runway/departure surface. Pilots are required to ascertain that there is no likelihood of collision with another aircraft or a vehicle prior to departure as stated in CAR 602.96 2a) and b).</p> <p>Arrival procedure: After exiting the runway/arrival surface and reporting clear on the radio frequency, pilots will be directed to contact GND ADV on 121.9 for ground traffic and taxiing information before entering the taxiway.</p>
CAUTION	<p>Only pilots familiar with local terrain should use this aprt dur hrs of darkness. Ngt ops not recommended unless all 7 hazard beacons oprg. Extv heli activity at A/D dur daylight hrs all quads. Due to high terrain, it is recommended pilots proceeding E or W under VFR, attain an alt of 5,000' (ASL) min before leaving the Okanagan Valley. Hi terrain reduces operational length of Rwy 34 PAPI. Extv bird activity in vic.</p>

PENTICTON VFR TERMINAL PROCEDURES CHART



BRITISH COLUMBIA

AERODROME / FACILITY DIRECTORY

PENTICTON VFR TERMINAL PROCEDURES CHART (Cont'd)

NAME	IDENT	LAT/LONG
KALEDEN	VCKLE	N49° 24' 00" W119° 36' 00"
NARAMATA	VCNAR	N49° 35' 50" W119° 36' 11"
OKANAGAN (OK) FALLS	VCOKN	N49° 20' 33" W119° 34' 08"
PEACHLAND	VCPCH	N49° 46' 00" W119° 43' 59"
SQUALLY PT	VCSQL	N49° 44' 00" W119° 43' 01"
SUMMERLAND	VCSML	N49° 36' 00" W119° 40' 01"
VASEUX LAKE	VCVAS	N49° 17' 00" W119° 31' 59"
CHUTE LAKE	VCCHL	N49° 41' 38" W119° 31' 52"

PENTICTON VFR TERMINAL PROCEDURES CHART - NIGHT CIRCUIT PROCEDURE

