

---

# FLIGHT PLAN & SITE SURVEY

---

C 58-5225 PRINCE GEORGE AEROMODELERS-  
GIESBRECHT FIELD

April 29, 2026



**IMPORTANT NOTICE**

Please ensure you have received all required authorizations prior to flight. This Site Survey was created using RPAS Wilco. The user accepts all responsibility for the accuracy of the information.

Terms & Conditions: [rpswilco.com/#tnc](https://rpswilco.com/#tnc)

# Mission Information

C 58-5225 PRINCE GEORGE AEROMODELERS- GIESBRECHT FIELD

## FLIGHT DETAILS

Reference No:	<b>MAAC-58-5225</b>
Project Name:	<b>PRINCE GEORGE AEROMODELERS</b>
Pilot Name:	<b>MAAC</b>
Pilot Certificate:	
Mission Type:	<b>VLOS</b>
Flight Start:	<b>April 29, 2026 03:20 PM</b>
Flight End:	<b>April 29, 2026 04:20 PM</b>

## LOCATION DETAILS

Flight Address:	<b>GIESBRECHT FIELD</b>
Latitude:	<b>53° 47' 11.69" N ( 53.787 )</b>
Longitude:	<b>122° 50' 57.84" W ( -122.849 )</b>
Altitude / Radius:	<b>400 ft / 926.0 m ( 0.5 nm)</b>
Classification:	<b>UNCONTROLLED</b>
FIR / Contact:	<b>CZVR / 604-586-4500</b>





## REPORT CONTENTS

Site Survey • Obstacles (if available) • Nearby Aerodromes • Canadian Aviation Regulations • GFA • Aerodrome Supplements • METAR & TAF • NOTAMs • CFS

# Flight Map & MODEL Details

MISSION LOCATION SURVEY

## MISSION LOCATION DETAILS

ROLE	LATITUDE	LONGITUDE
 MODEL	53° 47' 11.69" N 53.787	122° 50' 57.84" W -122.849
 Pilot		
 Payload Op.		
 Observer		

# Airspace Classification

MISSION LOCATION SURVEY

## AIRSPACE MAP



## OVERLYING AIRSPACES

Class	Name	Floor	Ceiling
E	Prince George, BC [TA]	700AGL	18000MSL
E	Prince George, BC a) [CAE]	5200AGL	18000MSL
B	Prince George, BC c) [CAE]	12500MSL	18000MSL
E	Prince George, BC a) [TSP]	5200AGL	12500MSL

## NEAREST AERODROMES & DISTANCE FROM OPERATION

BEAVERLEY (CBA8 - AERODROME - Reg)	Lat: 53.856	Long: -122.907	8.595KM	4.64NM	NW
PRINCE GEORGE (CYXS - AERODROME - Cert)	Lat: 53.884	Long: -122.678	15.615KM	8.43NM	NE
VANDERHOOF WATER (CVH3 - WATERDROME - Reg)	Lat: 54.02	Long: -123.998	79.595KM	42.98NM	W

## BRITISH COLUMBIA

## AERODROME / FACILITY DIRECTORY

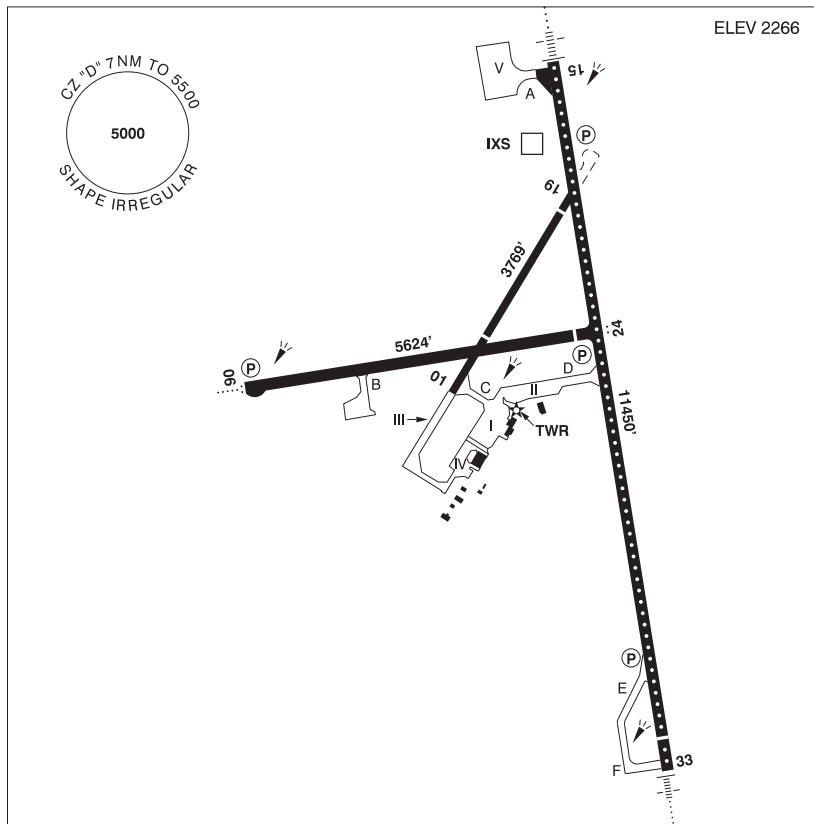
## BEAVERLEY BC

CBA8

<b>REF</b>	N53 51 20 W122 54 27 2.5N 19°E (2012) UTC-8(7) Elev 2420' A5014	
<b>OPR</b>	Cyr's Recreational Avn Park 250-964-8228 or 250-617-8228 Reg	
<b>PF</b>	B-1 C-2 D-3,4,5,6	
<b>FLT PLN</b>	<b>FIC</b> Kamloops 866-WXBRIEF (Toll free within Canada) or 866-541-4101 (Toll free within Canada & USA)	
<b>SERVICES</b>	<b>S</b> 2,4,5	
<b>RWY DATA</b>	Rwy 07(071°)/25(251°) 2461x50 gravel <b>RCR</b> Opr Jun-Sep No win maint. Rwy soft in spring & fall.	
<b>COMM</b>	<b>ATF</b> tfc 122.8 2NM 4000 ASL	
<b>CAUTION</b>	Parajumping in area to 12,500 ASL by NOTAM. 80' trees 100' S rwy. Wildlife ocsl on rwy.	

PRINCE GEORGE BC

CYXS



<b>REF</b>	N53 53 03 W122 40 39 2.8SE 18°E (2014) UTC-8(7) Elev 2266' A5014 LO1 HI3 CAP
<b>OPR</b>	Prince George Airport Authority 250-963-2400 Cert
<b>PF</b>	A-1,2,3,6 C-4,5
<b>CUST</b>	AOE/30 (120 with staged off-loading) 888-226-7277 1630-0030Z†
<b>FLT PLN</b>	<p><b>FIG</b> Kamloops 866-WXBRIEF (Toll free within Canada) or 866-541-4101 (Toll free within Canada &amp; USA)</p> <p><b>WX</b> METAR AUTO H24 (see COMM). TAF H24, issue times: 01, 07, 13, 19Z. WxCam</p>
<b>SERVICES</b>	<p><b>FUEL</b> 100LL, JA-1 (FSII avbl), F-34, JB, HPR</p> <p><b>OIL</b> All</p> <p><b>S</b> 1,2,3,4</p> <p><b>ARFF</b> DESIGNATED CAT 7 1400-0730Z† sked pax flt only, O/T call out chg, 2 hr PN, apr clsd to acct 20 seats &amp; abv, exc for diversions or as an altn A/D without PPR.</p> <p><b>PVT ADV</b> Jetmark 129.4 250-961-8124</p> <p><b>MIL CON</b> Executive Aviation 250-961-8124</p>

## BRITISH COLUMBIA

## AERODROME / FACILITY DIRECTORY

## PRINCE GEORGE BC (Cont'd)

CYXS

<b>RWY DATA</b>	Rwy 15(153°)/33(333°) 11450x150 ASPH Thld 33 displ 500' Rwy 15 down 0.3% Rwy 06(063°)/24(243°) 5624x150 ASPH Thld 24 displ 401' Rwy 24 up 0.87% Rwy 01(013°)/19(193°) 3769x75 ASPH Thld 01 displ 984'. Thld 19 displ 373'
<b>RWY CERT</b>	Rwy 15 RVR 1200(1/4sm)/Rwy 33 RVR 1200(1/4sm) AGN V Rwy 06/24 AGN IIIB Rwy 01/19 AGN III
<b>TWY CERT</b>	Twy: B AGN IIIB Twy: C, D AGN IV
<b>RCR</b>	Opr 1300-0730Z†. Rwy 01/19 rstd to 12,500 lbs for ldg & tkof day only. Win maint 1300-0730Z† O/T 2hr PN cost recovery. CRFI, PCN.
<b>LIGHTING</b>	06-AO(TE ME) P2, 24-AS(TE ME) P2, 15-AN(TE HI CL) P3, 33-AN(TE HI CL) P2 PAPI limitation/restriction. PAPI Rwy 24 to be used only within 5NM of thld ARCAL-118.3 type K when twr clsd Rwys 01/19 lit as twy
<b>COMM</b>	
<b>RCO</b>	Williams Lake rdo 118.3 (RAAS) 05-14Z† Pacific rdo 123.55 (FISE) 126.7 (bcst)
<b>ATIS</b>	128.725 14-05Z†
<b>GND</b>	121.9 14-05Z†
<b>TWR</b>	118.3 (V) 14 -05Z† (emerg only 250-963-9177)
<b>MF</b>	Williams Lake rdo 118.3 05-14Z† CZ shape irregular 7NM 5500 ASL (CAR 602.98) (emerg only 250-989-4415)
<b>PAL</b>	Vancouver Ctr 133.8
<b>AWOS</b>	128.725 05-14Z†
<b>NAV</b>	
<b>VOR/DME</b>	YXS 112.3 Ch 70 N53 53 39 W122 27 20 (4076')
<b>DME</b>	IXS 109.5 Ch 32 N53 53 46 W122 40 19 (2260')
<b>ILS</b>	IXS 109.5 (Rwy 15) RVR
<b>PRO</b>	Rgt hand circuits Rwys 19, 24 & 33 (CAR 602.96).
<b>CAUTION</b>	Tall vehicles crossing 910' N thld Rwy 15. Extv bird activity dur spring & fall. Parajumping activity vic Beaverley A/D 8NM SW to 12,500 ASL by NOTAM, monitor 122.1. Radiosonde balloon launches with an ascent rate of 1000 ft/min daily between the hours of 1115-1345Z & 2315-0145Z. Hi terrain reduces operational length of Rwy 24 PAPI.

# CANADA WATER AERODROME SUPPLEMENT

Effective 0901Z 19 March 2026 to 0901Z 18 February 2027

B278 AERODROME/FACILITY DIRECTORY

## VANCOUVER INTL BC (Cont'd)

CAM9

<b>PRO</b>	<p><b>AIRSPACE:</b> See VTA chart for VFR rtes &amp; pro. Procedures for crossing the southern Strait of Georgia within Tml Class C airspace refer to VTPC. Transponder mode C rqr'd in class C airspace and CZ. CARS Part VII operators must ensure routes flown at night meet minimum altitude requirements for commercial operations.</p> <p><b>ARR/DEP:</b> See Vancouver Intl CAM9 VTPC. Downwind flt alt not below 500' ASL over populated area to the S. Dep rstd til 0630 hr lcl O/T PPR from YVR Ops 604-207-7022.</p> <p><b>NOISE ABATEMENT:</b> Consistent with safe acft ops, the following are recommended operational proc: 1. Tkof Westbound and ldg Eastbound are preferred when wind and water conds permit. 2. Use low RPM reduced noise tkof when able. 3. Avoid dep rte that fly over the City of Richmond, whenever possible. 4. Avoid using "reverse thrust" after ldg to slow the acft. 5. Maintain 500 ASL when flying the Westminster Hwy downwind rte.</p> <p><b>ATS REQUIREMENTS:</b> - All VFR acft arriving, departing or transiting the Vancouver or Victoria Tower Class C or D airspace require a transponder code. - All acft departing Vancouver or Victoria Intl (including Water Aerodrome) call Kamloops FIC at 866-992-7433 (866-WXBRIEF) or 866-541-4101 for code assignment at least 30 min prior to flight or file a VFR Flight Plan/Flight Itinerary. - All acft arriving Vancouver, Victoria Intl (including Water Aerodrome) or transiting Vancouver or Victoria Control Zones obtain a code from one of the following ATS units: Vancouver Harbour, Nanaimo, Victoria Harbour, Boundary Bay, Langley, Abbotsford or Pitt Meadows, Pacific Radio 123.15, or call Kamloops FIC at 866-992-7433 (866-WXBRIEF) or 866-541-4101.</p>
<b>CAUTION</b>	Low lvl overflights of heli arr/dep adj land A/D. Rough water associated with strong E or W winds (1-3' swells). Debris in river. Twr cranes S side of Fraser River adj Olympic Oval.

## VANDERHOOF WATER BC

CVH3

<b>REF</b>	N54 01 13 W123 59 53 Adj NE 17°E° (2019) UTC-8(7) Elev 2050' aprx A5014	<p>The map shows the Nechako River flowing through the area. A 5 NM radius circle is centered on the aerodrome, with an elevation of 4200 feet. The aerodrome is located at an elevation of approximately 2050 feet. Docks are shown along the riverbank. A scale bar at the bottom indicates distances from 0 to 6000 feet.</p>
<b>OPR</b>	Vanderhoof Flying Club 250-567-4805/8724 or 250-614-3569 Reg	
<b>PF</b>	C-1,2,3,4,5 D-6	
<b>FLT PLN</b>	<b>FIC</b> Kamloops 866-WXBRIEF (Toll free within Canada) or 866-541-4101 (Toll free within Canada & USA)	
<b>SERVICES</b>	<b>FUEL</b> 100LL (at land A/D), MG-1, MG-4 not avbl on site. <b>PVT ADV</b> Guardian Aerospace 250-567-2655 15-24Z± O/T 250-570-2670/2671 PN for float planes.	
<b>A/D DATA</b>	Open water May 1 to Oct 30. Mud & gravel bottom. <b>DOCKS</b> 3 docks on private land. Dock space not assured.	

# CANADA WATER AERODROME SUPPLEMENT

Effective 0901Z 19 March 2026 to 0901Z 18 February 2027

AERODROME/FACILITY DIRECTORY B279

## VANDERHOOF WATER BC (Cont'd)

CVH3

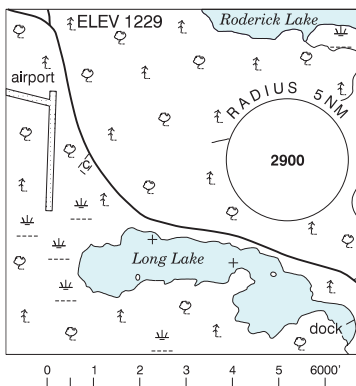
<b>COMM</b>	
<b>ATF</b>	ttc 122.8 5NM 5100 ASL
<b>CAUTION</b>	Land A/D 1.5NM NNW. Low water Sep/Oct. Watch for fisheries buoys. Ocsl debris mid Jul-mid Aug dur hi water release.

## VERMETTE LANDING QC — See PETAWAWA / VERMETTE LANDING

## VERMILION BAY ON

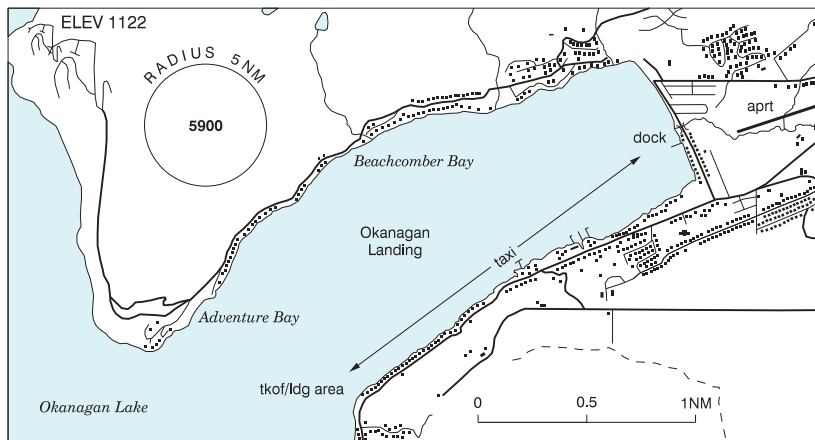
CKH6

<b>REF</b>	N49 53 W93 24 1.5NW 0° (2014) UTC-6(5) Elev 1229' A5007
<b>OPR</b>	Wilderness Air 807-227-5473 Reg
<b>PF</b>	B-1 C-2,3,4,5
<b>FLT PLN</b>	Pilots to open/close VFR flt plan with London rdo, FISE or by phone
<b>FIG</b>	London 866-WXBRIEF (Toll free within Canada) or 866-541-4104 (Toll free within Canada & USA)
<b>SERVICES</b>	
<b>FUEL</b>	100LL
<b>OIL</b>	All
<b>S</b>	5
<b>A/D DATA</b>	Open water mid May-end Oct. Depth 4', sheltered bay.
<b>COMM</b>	
<b>ATF</b>	ttc 130.7 5NM 4300 ASL
<b>CAUTION</b>	Land A/D 1.2NM NW.



## VERNON / WILDLIFE BC

CVW2



<b>REF</b>	N50 14 37 W119 20 40 2.3SW 16°E (2016) UTC-8(7) Elev 1122' A5005
<b>OPR</b>	Robert Lord 250-859-9329 or 250-545-9108 Reg PN