

---

# FLIGHT PLAN & SITE SURVEY

---

E 496-5076 HESPELER MODEL AVIATORS INC- HESPELER  
MEMORIAL ARENA

April 29, 2026



**IMPORTANT NOTICE**

Please ensure you have received all required authorizations prior to flight. This Site Survey was created using RPAS Wilco. The user accepts all responsibility for the accuracy of the information.

Terms & Conditions: [rpswilco.com/#tnc](https://rpswilco.com/#tnc)

# Mission Information

E 496-5076 HESPELER MODEL AVIATORS INC- HESPELER MEMORIAL ARENA

## FLIGHT DETAILS

Reference No:	<b>MAAC-496-5076</b>
Project Name:	<b>HESPELER MODEL AVIATORS INC</b>
Pilot Name:	<b>MAAC</b>
Pilot Certificate:	
Mission Type:	<b>VLOS</b>
Flight Start:	<b>April 29, 2026 07:15 PM</b>
Flight End:	<b>April 29, 2026 08:15 PM</b>

## LOCATION DETAILS

Flight Address:	<b>HESPELER MEMORIAL ARENA</b>
Latitude:	<b>43° 25' 39.21" N ( 43.428 )</b>
Longitude:	<b>80° 17' 30.79" W ( -80.292 )</b>
Altitude / Radius:	<b>400 ft / 926.0 m ( 0.5 nm)</b>
Classification:	<b>CONTROLLED</b>
FIR / Contact:	<b>CZYZ / 905-676-4509</b>

### NOTES

Your flight is in controlled airspace.

If your RPAS is > 250g, please obtain RPAS Flight Authorization using the NavDrone app or by contacting NavCanada. (CARs 901.71)





## REPORT CONTENTS

Site Survey • Obstacles (if available) • Nearby Aerodromes • Canadian Aviation Regulations • GFA • Aerodrome Supplements • METAR & TAF • NOTAMs • CFS

# Flight Map & MODEL Details

MISSION LOCATION SURVEY

## MISSION LOCATION DETAILS

ROLE	LATITUDE	LONGITUDE
 MODEL	43° 25' 39.21" N 43.428	80° 17' 30.79" W -80.292
 Pilot		
 Payload Op.		
 Observer		

# Airspace Classification

MISSION LOCATION SURVEY

## AIRSPACE MAP



## OVERLYING AIRSPACES

Class	Name	Floor	Ceiling
E	Southern Ontario Low Level Control Area c) [CAE]	6500MSL	18000MSL
E	Toronto, ON [TSP]	6500MSL	12500MSL
E	T614 Fixed RNAV Route	2200AGL	18000MSL
C	Kitchener/Waterloo, ON [CZ]	SFC	4000MSL
E	3.4.1-43 [TA]	700AGL	18000MSL

## NEAREST AERODROMES & DISTANCE FROM OPERATION

CAMBRIDGE (PUSLINCH LAKE) (CMB3 - WATERDROME - Reg)	Lat: 43.421	Long: -80.257	2.91KM	1.57NM	E
REIDS FIELD (CPE4 - AERODROME - Reg)	Lat: 43.443	Long: -80.232	5.131KM	2.77NM	E
WATERLOO (CYKF - AERODROME - Reg)	Lat: 43.461	Long: -80.379	7.956KM	4.3NM	NW

# CANADA WATER AERODROME SUPPLEMENT

Effective 0901Z 19 March 2026 to 0901Z 18 February 2027

## B24 AERODROME/FACILITY DIRECTORY

### CAMBRIDGE BAY NU

CJD7

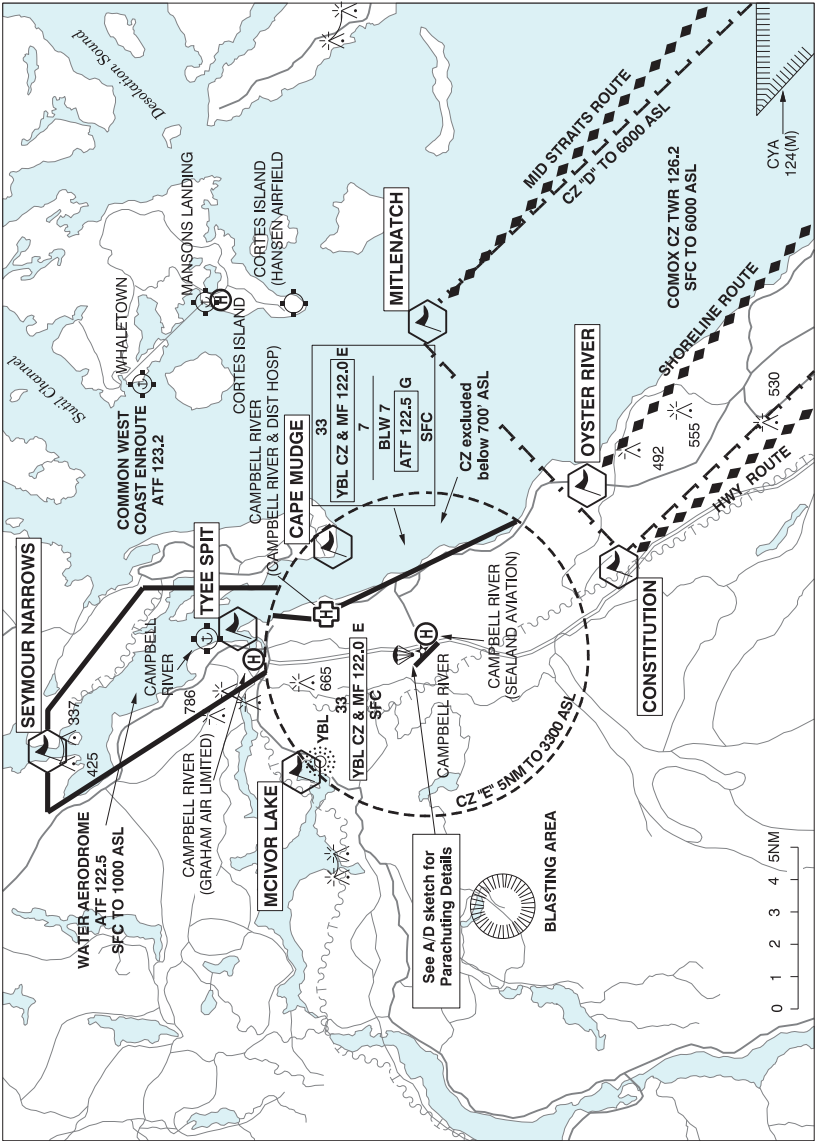
<b>REF</b>	N69 07 20 W105 01 15 7°E (2014) GV119°E 3SW UTC-7(6) Elev 00' A5042 LO5	
<b>OPR</b>	Adlair Aviation 867-983-2569/2247 Reg	
<b>PF</b>	C-1,2,3,4,5	
<b>FLT PLN</b>	<b>FIG</b> Edmonton 866-WXBRIEF (Toll free within Canada) or 866-541-4102 (Toll free within Canada & USA) <b>CARS</b> 867-983-2501 lcl wx only; other wx O/R	
<b>SERVICES</b>	Call out chgs may be levied. <b>FUEL</b> 100(D) Ctc CARS for assistance O/T Kitnuna Petroleum Ltd 867-983-5109/7500 <b>OIL</b> All <b>S</b> 5	
<b>A/D DATA</b>	Open water mid Jul-mid Sep exc drift ice possible in bay til Aug. Tidal range 2', current 1-5 kt, small island in harbour. Exposed shoal NE of dock dur low water levels.	
<b>COMM</b>	<b>RCO</b> Edmonton rdo 123.25 (FISE) 126.7 (bcst) <b>MF</b> aprt rdo 122.1 5NM centred on Cambridge Bay A/D 2.3NM WSW 3100 ASL (CAR 602.98) <b>PAL</b> Edmonton Ctr 134.675 <b>APRT RDO</b> 122.1 at land A/D 2.3NM WSW	
<b>NAV</b>	<b>NDB</b> CB 245 (H) N69 06 49 W105 00 54 <b>VOR/DME</b> YCB 112.7 Ch 74 N69 07 04 W105 10 22 (131') VOR oriented on True North.	
<b>PRO</b>	Do not land on lakes btwn aprt & settlement as water is used for drinking.	
<b>CAUTION</b>	SW wind cause heavy seas. Cable span 0.5NM S of river mouth.	

### CAMBRIDGE (PUSLINCH LAKE) ON

CMB3

<b>REF</b>	N43 25 14 W80 15 25 3.5NE 10°W UTC-5(4) Elev 1000' VTA A5000	
<b>OPR</b>	Ron & Yvonne Harper 519-496-2240 Reg PPR	
<b>PF</b>	B-1 C-2,3,4,5,6	
<b>FLT PLN</b>	<b>FIG</b> London 866-WXBRIEF (Toll free within Canada) or 866-541-4104 (Toll Free within Canada & USA)	
<b>SERVICES</b>	<b>S</b> 5, 7	
<b>A/D DATA</b>	Open water Apr-Oct, mud & sand bottom. Docks depth 4'	
<b>COMM</b>	<b>ATF</b> tfc 123.2 5NM 4000 ASL	
<b>CAUTION</b>	Lake is 5.8NM from CYKF. Pilots may ctc YKF twr 126.0 on apch to lake for tfc advsy. Hvy boat tfc on wknds.	

CAMPBELL RIVER VFR TERMINAL PROCEDURES CHART



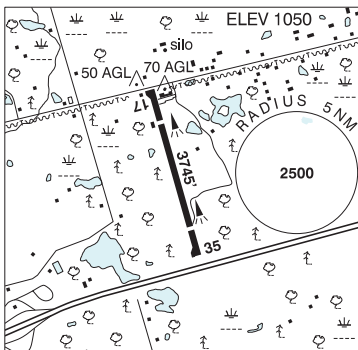
**ONTARIO**

**AERODROME / FACILITY DIRECTORY**

**CAMBRIDGE / REID'S FIELD ON**

**CPE4**

<b>REF</b>	N43 26 34 W80 13 56 4NE 10°W UTC-5(4) Elev 1050' VTA A5000 LO6
<b>OPR</b>	Reid's Heritage Homes Ltd 519-658-6656 Reg PPR
<b>PF</b>	B-1 C-2,3,4,5,6
<b>FLT PLN</b>	<b>FIC</b> London 866-WXBRIEF (Toll free within Canada) or 866-541-4104 (Toll free within Canada & USA)
<b>RWYDATA</b>	Rwy 17/35 3745x45 asphalt Thld 35 displ 565'. Thld 17 displ 700'. Rwy 17 up 1%.
<b>RCR</b>	Opr Ltd win maint
<b>LIGHTING</b>	17-(TE ME), 35-(TE ME) ARCAL-123.2 type K
<b>COMM</b>	<b>ATF</b> tfc 123.2 5NM 4100 ASL
<b>CAUTION</b>	Anticipate windshear on apch Rwy 35 due trees E of thld Rwy 35. Bldg W of Rwy 17/35 within 150' of rwy centreline. Trees within 100' either side of Rwy 17/35, full length, 80 AGL 1130 ASL. Extv glider activity in area. 24" high aluminum rail along W side of rwy in touchdown zone of Rwy 17.

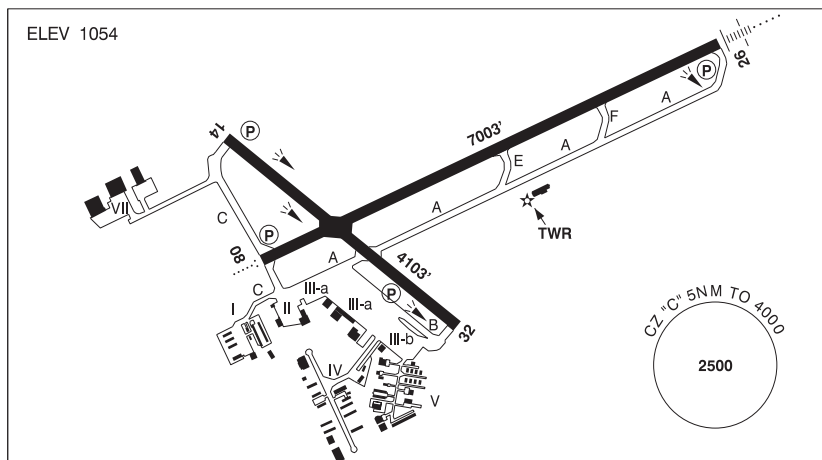


## ONTARIO

## AERODROME / FACILITY DIRECTORY

## KITCHENER / WATERLOO ON

CYKF



<b>REF</b>	N43 27 39 W80 22 43 1E 10°W UTC-5(4) Elev 1054' VTA A5000 LO6 HI5 CAP OC
<b>OPR</b>	Regional Muni of Waterloo 519-648-2256 H24 Cert Ldg fees are applied to all acft above 2500 Kg max tkof wt
<b>PF</b>	A-1,3,6,7,8 B-2 avbl 13-20Z† Mon-Sat C-4,5
<b>CUST</b>	AOE/15 888-226-7277 Gen Avn only AOE/180 12-04Z† 519-648-3858 2hrs PN
<b>FLT PLN</b>	
<b>FIC</b>	London 866-WXBRIEF (Toll free within Canada) or 866-541-4104 (Toll free within Canada & USA)
<b>WX</b>	METAR AUTO H24 (see COMM) WxCam TAF H24, issue times: 0140, 0740, 1340, 1940Z.
<b>SERVICES</b>	
<b>FUEL</b>	100LL, JA (FSII avbl), JA-1 (FSII avbl)
<b>OIL</b>	80, 100
<b>S</b>	1,2,3,4,5,6
<b>ARFF</b>	DESIGNATED CAT 7 for sked pax fit. CAT 7 for non-sked 45 min PN 519-648-3370. PPR for acft 20 seats and abv, exc for diversions or as an altn.
<b>JASU</b>	Air Start
<b>PVT ADV</b>	Chartright 129.475 905-671-4674 ext 125 1100-0130Z† O/T call out chg. Flite Line svc 130.5 519-514-0530 11-01Z† O/T call out chg. Summit Fuel Services 123.5 519-497-8091 12-02Z† O/T call out chg.
<b>MIL CON</b>	Chartright FBO 800-595-9395

## ONTARIO

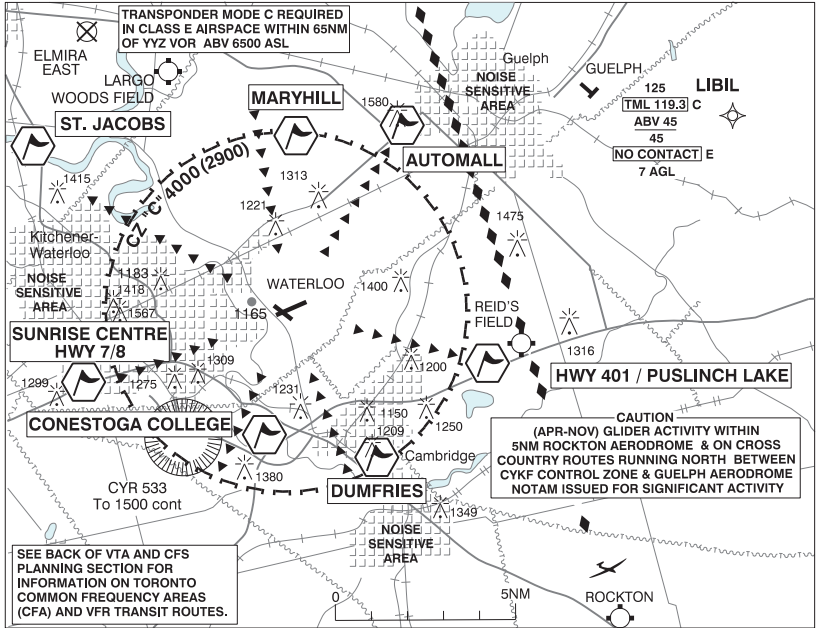
## AERODROME / FACILITY DIRECTORY

## KITCHENER / WATERLOO ON (Cont'd)

CYKF

<b>RWY DATA</b>	Rwy 14(138°)/32(318°) 4103x148 ASPH Rwy 08(075°)/26(255°) 7003x148 ASPH Rwy 26 down 0.44% RESA: 08 197'; 26 295'
<b>RWY CERT</b>	Rwy 14/32 AGN IIIA Rwy 08 RVR 1200(1/4sm)/Rwy 26 RVR 1200(1/4sm) AGN IIIB
<b>TWY CERT</b>	Twy B AGN IIIA
<b>APRON</b>	Apron I max wingspan 50'. Apron II max wingspan 55'. Turbine acft PPR. Apron IIIA tml apron for air carriers only. Max wingspan 118', larger acft PPR. Apron IIIB GA freight max wingspan 118', larger acft PPR. Apron IV max wingspan 118'. Apron V max wingspan 79'. Apron VII max wingspan 170'.
<b>RCR</b>	Aprt Ops 519-648-3370 CRFI/RSC avbl H24. PCN
<b>LIGHTING</b>	08-AO(TE HI) P2, 14-(TE HI) P1, 26-AN(TE HI) P2, 32-(TE HI) P1 ARCAL-126.0 type K when twr clsd. PAPI Rwy 14, 32 and 26 not avbl on ARCAL, on continuously: low ints at SS minus 30 min to SR minus 30 min, high ints at SR minus 30 min to SS minus 30 min.
<b>COMM</b>	<p><b>ATIS</b> 125.1 12-04Z‡</p> <p><b>GND</b> Waterloo 121.8 12-04Z‡</p> <p><b>TWR</b> Waterloo 126.0 118.55 (V) 12-04Z‡ (emerg only 519-648-3055)</p> <p><b>MF</b> 126.0 04-12Z‡ 5NM 4000 ASL (CAR 602.98)</p> <p><b>ARR</b> Toronto Tml 128.275</p> <p><b>DEP</b> Toronto Tml 128.275</p> <p><b>PAL</b> Toronto Ctr 128.275</p> <p><b>AWOS</b> 125.1 04-12Z‡</p>
<b>NAV</b>	<p><b>DME</b> WATERLOO YWT 115.0 Ch 97 N43 27 31 W80 22 46 (1047')</p> <p><b>ILS</b> IKF 110.7 (Rwy 26)</p>
<b>PRO</b>	<p>Pursuant to CAR 602.105, the following procedures are in effect. Noise Abatement pro in effect for all acft. See CAP or VTPC. Pilots flying an inst apch pro to Rwy 26 take note: The pro turn overflies Guelph Aprt (circuit hgt 2100 ASL). Pilots flying an inst apch pro to Rwy 26 can anticipate delays and/or restrictions when Rwy 05 &amp; 06R are in use at Toronto/Lester B. Pearson. IFR tng flts are to ctc National Traffic Management Unit (FLOW CTL) 800-268-4831 2 hrs prior to ETD or possible delays. VFR tfc outside CZ watch for apch acft oprg in vic of extended Rwy 26 centreline. VFR dep avoid noise sensitive areas at an operationally safe alt.</p> <p>Pursuant to CAR 602.105, the following procedures are in effect. Rgt hand circuits Rwy 32 (CAR 602.96).</p> <p>No VFR or IFR tng on Rwy 08 btwn 02-12Z‡</p> <p><b>REDUCED VISIBILITY OPERATING PROCEDURES (RVOP):</b> One acft permitted on manoeuvring area at a time dur RVOP. RVOP avbl 12-04Z‡ only. For VFR ARR/DEP rtes see Kitchener/Waterloo VTPC.</p>
<b>CAUTION</b>	Winch-launched hang gliders, cable to 2000 AGL N43 33 18 W080 31 31 near St. Jacobs aprx 8.5NM NW of A/D.

**KITCHENER / WATERLOO VFR TERMINAL PROCEDURES CHART**



**ARRIVALS**

NOT BELOW 2600 ASL until advised by ATC. Follow route as depicted then join circuit as per Tower clearance.

DUMFRIES: Remain south of Hwy 401 until passing DUMFRIES flyover. Then follow route inbound. Not BELOW 2600 FT ASL.

MARYHILL: Follow route inbound. Pass one mile west of the MARYHILL. Not BELOW 2600 FT ASL.

SUNRISE CENTRE HWY 7/8: Proceed to the SUNRISE CENTRE HWY 7/8 then follow route inbound. Not BELOW 2600 FT ASL.

**KITCHENER / WATERLOO VFR TERMINAL PROCEDURES CHART (Cont'd)**

**DEPARTURES**

Follow route as depicted on VTTC.

ST. JACOBS: Follow route to ST. JACOBS.

CONESTOGA COLLEGE: Follow route to CONESTOGA COLLEGE. Remain North of HWY 401 until clear of the Control Zone.

AUTOMALL: Follow route to AUTOMALL.

HWY 401/PUSLINCH LAKE: Follow route to HWY 401/PUSLINCH LAKE. Remain North of HWY 401 until clear of CZ.

All VFR aircraft should anticipate arrival and departure instructions from air traffic control (ATC).