

---

# FLIGHT PLAN & SITE SURVEY

---

E 9005-5782 Zone E Middle Ontario- Canadian Warplane  
Heritage Museum AZM Meeting

April 29, 2026



**IMPORTANT NOTICE**

Please ensure you have received all required authorizations prior to flight. This Site Survey was created using RPAS Wilco. The user accepts all responsibility for the accuracy of the information.

Terms & Conditions: [rpaswilco.com/#tnc](https://rpaswilco.com/#tnc)

# Mission Information

E 9005-5782 ZONE E MIDDLE ONTARIO- CANADIAN WARPLANE HERITAGE MUSEUM AZM MEETING

## FLIGHT DETAILS

Reference No:	<b>MAAC-9005-5782</b>
Project Name:	<b>Zone E Middle Ontario</b>
Pilot Name:	<b>MAAC</b>
Pilot Certificate:	
Mission Type:	<b>VLOS</b>
Flight Start:	<b>April 29, 2026 07:38 PM</b>
Flight End:	<b>April 29, 2026 08:38 PM</b>

## LOCATION DETAILS

Flight Address:	<b>Canadian Warplane Heritage Museum AZM Meeting</b>
Latitude:	<b>43° 9' 36.00" N ( 43.16 )</b>
Longitude:	<b>79° 55' 30.00" W ( -79.925 )</b>
Altitude / Radius:	<b>400 ft / 926.0 m ( 0.5 nm)</b>
Classification:	<b>CONTROLLED</b>
FIR / Contact:	<b>CZYZ / 905-676-4509</b>

### NOTES

Your flight is in controlled airspace.  
If your RPAS is > 250g, please obtain RPAS Flight Authorization using the NavDrone app or by contacting NavCanada. (CARs 901.71)





## REPORT CONTENTS

Site Survey • Obstacles (if available) • Nearby Aerodromes • Canadian Aviation Regulations • GFA • Aerodrome Supplements • METAR & TAF • NOTAMs • CFS

# Flight Map & MODEL Details

MISSION LOCATION SURVEY

## MISSION LOCATION DETAILS

ROLE	LATITUDE	LONGITUDE
 MODEL	43° 9' 36.00" N 43.16	79° 55' 30.00" W -79.925
 Pilot		
 Payload Op.		
 Observer		

# Airspace Classification

MISSION LOCATION SURVEY

## AIRSPACE MAP



## OVERLYING AIRSPACES

Class	Name	Floor	Ceiling
D	Hamilton, ON [CZ]	SFC	4500MSL
E	3.4.1-43 [TA]	700AGL	18000MSL
E	Southern Ontario Low Level Control Area c) [CAE]	6500MSL	18000MSL
E	Toronto, ON [TSP]	6500MSL	12500MSL
E	T608 Fixed RNAV Route	2200AGL	18000MSL
E	T781 Fixed RNAV Route	2200AGL	18000MSL

## NEAREST AERODROMES & DISTANCE FROM OPERATION

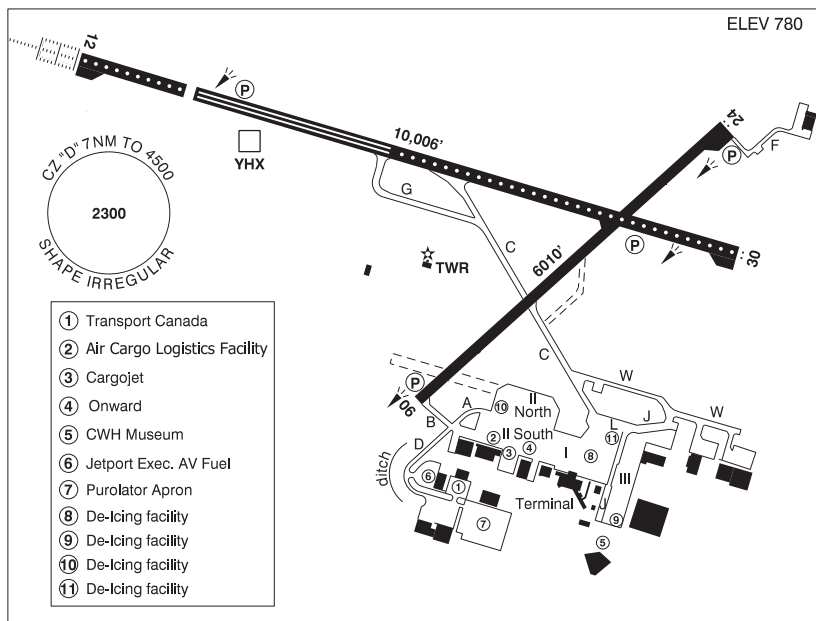
HAMILTON (CYHM - AERODROME - Cert)	Lat: 43.174	Long: -79.935	1.755KM	0.95NM	NW
MOUNT HOPE (WILLOW VALLEY) (CMH8 - HELIPORT - Reg)	Lat: 43.165	Long: -79.897	2.338KM	1.26NM	E
GRAND RIVER EXECUTIVE AIRPORT (CPP6 - AERODROME - Reg)	Lat: 43.038	Long: -79.852	14.804KM	7.99NM	SE

ONTARIO

AERODROME / FACILITY DIRECTORY

HAMILTON ON

CYHM



<b>REF</b>	N43 10 25 W79 56 06 6SW 10°W UTC-5(4) Elev 780' VTA A5000 LO6 HI5 CAP OC
<b>OPR</b>	Aprt Ops Ctr 905-679-4908 / Tradeport Intl Corp 905-679-1999 H24 Cert Ldg fees
<b>PF</b>	A-1,2,3,6,7 C-4,5
<b>CUST</b>	AOE/220 (400 with staged off-loading) 888-226-7277 12-04Z‡ May 1-Oct 31; H24 Nov 1-Apr 30 svc chg PN
<b>FLT PLN</b>	
<b>    <b>FIG</b></b>	London 866-WXBRIEF (Toll free within Canada) or 866-541-4104 (Toll free within Canada & USA)
<b>    <b>WX</b></b>	METAR H24. TAF H24, issue times: 00, 06, 12, 18Z.
<b>SERVICES</b>	
<b>    <b>FUEL</b></b>	JA-1 (FSII avbl)
<b>    <b>OIL</b></b>	All
<b>    <b>S</b></b>	1,2,3,4
<b>    <b>ARFF</b></b>	DESIGNATED CAT 7 for sked pax flt (CAT 5 non-sked). CAT 7 for non-sked 30 min PN ctc 905-679-4908. PPR for acct 20 seats and abv, exc for diversions or as an altn.
<b>    <b>SUP FL</b></b>	A-ice, D-ice, HPOX
<b>    <b>JASU</b></b>	CE13, CE15, CA1
<b>    <b>PVT ADV</b></b>	Cargojet 131.575 905-679-3558; Onward Avn 130.5 905-679-4127; Hamilton Jetport 122.35 905-679-2400; Executive Aviation 289-440-1579
<b>    <b>MIL CON</b></b>	Onward Aviation 905-679-4127

## ONTARIO

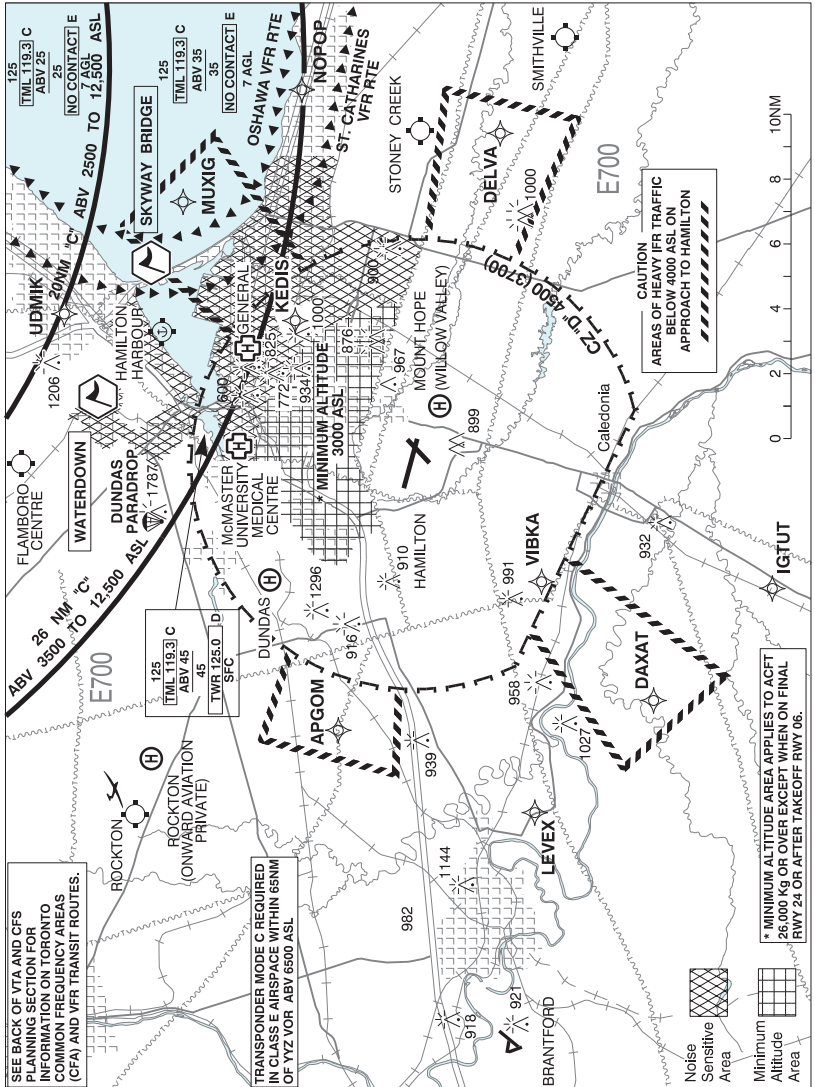
## AERODROME / FACILITY DIRECTORY

## HAMILTON ON (Cont'd)

CYHM

<b>RWY DATA</b>	Rwy 06(059°)/24(239°) 6010x150 ASPH Rwy 12(117°)/30(297°) 10,006x197 ASPH Thld 12 displ 1608' RESA: 12/30 492'
<b>RWY CERT</b>	Rwy 06/24 AGN IV Rwy 12 RVR 600/Rwy 30 RVR 1200(1/4sm) AGN V
<b>TWY CERT</b>	Twy: D, W AGN IV Twy: F AGN IIIB Twy J: AGN IV & AGN IIIB fr Twy L to Twy W
<b>TWY</b>	Twy: D, J, L, W uncontrolled. Twy C: Right turn fm Rwy 06 to Twy C and left turn fm Twy C to Rwy 24 rstd to acft with wingspans of 52.1m/171' or less. Left turn fm Rwy 30 to Twy C and right turn fm Twy C to Rwy 12 requires a discretionary oversteer for acft with wingspans of 52.1m/171ft or greater. Twy F: Rstd to acft with wingspans of 35.9m/118' or less. Twy J: Btwn Twy L and Twy W rstd to acft with wingspans of 35.9m/118ft or less.
<b>APRON</b>	Aprons I, II & III rstd to power-in/pushback for fixed wing acft only unless otherwise auth by opr. Aprons I, II & III uncontrolled. Taxiing aircraft to remain on taxilane centre lines. Apron II North: Taxiing aircraft to remain on taxilane centre lines. Aircraft shall not taxi between the ATB, Onward or the ACLF and pushed back aircraft.
<b>RCR</b>	Aprt Ops Ctr CRFI/RSC avbl H24 Nov 15 - Apr 15. PCN
<b>LIGHTING</b>	06(TE ME) P2, 24-AS(TE ME) P2, 12-AL(TE HI CL TDZL) P2, 30-AS(TE HI CL) P3
<b>COMM</b>	
<b>ATIS</b>	128.1
<b>GND</b>	121.6
<b>TWR</b>	125.0 (E) (emerg only 905-679-3220)
<b>ARR</b>	Toronto Tml 119.7
<b>DEP</b>	Toronto Tml 119.7
<b>PAL</b>	Toronto Ctr 119.7
<b>NAV</b>	
<b>DME</b>	YHX 113.35 Ch 80(Y) N43 10 38 W79 56 39 (797')
<b>ILS</b>	IAB 110.9 (Rwy 12) RVR
<b>LOC</b>	IER 110.9 (Rwy 30)
<b>PRO</b>	IFR tng flts are to ctc National Traffic Management Unit (FLOW CTL) 800-268-4831 2 hrs prior to ETD for possible delays. VFR tfc outside CZ watch for IFR practice apch acft oprg in vic of all extended rwy ctr lines.
<b>NOISE ABATEMENT</b>	<b>RESTRICTIONS</b> Pursuant to CAR 602.105, the following restrictions are in effect. 1. Tng flts PPR fr APM btwn 23-07 hrs lcl. 2. Dep rwy 06 PPR fr APM btwn 23-07 hrs lcl. 3. Arr & apch rwy 24 PPR fr APM btwn 23-07 hrs lcl. <b>PROCEDURES</b> Pursuant to CAR 602.105, the following procedures are in effect. 1. Circuit alt 2500 ASL for turbo-prop & turbo-jet acft. 2. Rgt hand circuits rwy 12 btwn 23-07 hrs lcl (CAR 602.96). 3. The min alt for the ops of an acft 26,000 Kg & over (max cert gross tkof wt) is 3000 ASL over the Minimum Altitude Area (depicted on VTPC) exc on final apch to Rwy 24, after tkof fr Rwy 6, or circling to land after conducting an inst apch pro. 4. IFR Departures at all times (VFR acft between 04-12Z± wx permitting) Rwy 12-Climb on rwy hdg to 3000 ASL before proceeding on course, (wx permitting). Rwy 30-Climb on rwy hdg to 1300 ASL. Turn left hdg 260°. No rgt turn below 4000 ASL (wx permitting). Rwys 06, 24-Climb on rwy hdg to 3000 ASL (wx permitting) before proceeding on course.
<b>CAUTION</b>	Large ditch 131' fr edge of Twy D along the W side.

**HAMILTON VFR TERMINAL PROCEDURES CHART**



NAME	IDENT	LAT/LONG
SKYWAY BRIDGE	VCBBR	N43° 18' 00" W079° 47' 45"
WATERDOWN	VCWTD	N43° 19' 45" W079° 53' 15"

## ONTARIO

## AERODROME / FACILITY DIRECTORY

**MOUNT HOPE (WILLOW VALLEY) ON (Heli)****CMH8**

<b>REF</b>	N43 09 53 W79 53 50 Adj ENE 10°W (2024) UTC-5(4) Elev 723' A1900 A5000	
<b>OPR</b>	Willow Valley Golf Course 905-389-1315 Reg PPR	
<b>FLT PLN</b>	<b>FIC</b> London 866-WXBRIEF (Toll free within Canada) or 866-541-4104 (Toll free within Canada & USA)	
<b>HELI DATA</b>	FATO 64' dia GRASS TLOF 17' dia ASPH Safety Area 85' dia Max heli overall length 43'	
<b>RCR</b>	Opr Ltd win maint PN	
<b>COMM</b>	<b>TWR</b> Hamilton 125.0	
<b>PRO</b>	Arr/dep 182° to 206° and 270° to 289° fr heli. Ctc Hamilton twr for specific instructions prior tkof & ldg.	
<b>CAUTION</b>	Hamilton apt adj W of heli. Unmarked p-lines 40 AGL 300' E and along adj road N of heli.	

## ONTARIO

## AERODROME / FACILITY DIRECTORY

## GRAND RIVER EXECUTIVE AIRPORT ON

CPP6

<b>REF</b>	N43 02 15 W79 51 09 1.7ENE York 10°W UTC-5(4) Elev 670' VTA A5000	
<b>OPR</b>	Near North Aviation 905-679-5577 Reg PPR ctc 647-628-5132	
<b>PF</b>	B-1 D-2,3,4,5,6	
<b>FLT PLN</b>		
<b>FIC</b>	London 866-WXBRIEF (Toll free within Canada) or 866-541-4104 (Toll free within Canada & USA)	
<b>RWY DATA</b>	Rwy 16/34 2800x35 ASPH Rwy 07/25 1350x100 GRASS	
<b>RCR</b>	Opr Ltd win maint. Rwy 07/25 may be soft in spring.	
<b>SERVICES</b>		
<b>FUEL</b>	100LL 13-23Z†	
<b>OIL</b>	15W50, W100 plus	
<b>COMM</b>		
<b>ATF</b>	tfc 123.2 5NM 3700 ASL	
<b>CAUTION</b>	P-line 35 AGL along road aprx 230' fr Thld 16. Scrub trees about 40' high aprx 75' fr Thld 07. Ditch at Thld 34. Possible wildlife on rwy.	