
FLIGHT PLAN & SITE SURVEY

F 86-5704 SAULT STE MARIE MODEL AIRPLANE RADIO
CONTROL CLUB- Canadian Bushplane Heritage Centre

April 29, 2026



IMPORTANT NOTICE

Please ensure you have received all required authorizations prior to flight. This Site Survey was created using RPAS Wilco. The user accepts all responsibility for the accuracy of the information.

Terms & Conditions: rpaswilco.com/#tnc

Mission Information

F 86-5704 SAULT STE MARIE MODEL AIRPLANE RADIO CONTROL CLUB- CANADIAN BUSHPLANE HERITAGE CENTRE

FLIGHT DETAILS

Reference No:	MAAC-86-5704
Project Name:	SAULT STE MARIE MODEL AIRPLANE RADIO CONTROL CLUB
Pilot Name:	MAAC
Pilot Certificate:	
Mission Type:	VLOS
Flight Start:	April 29, 2026 06:22 PM
Flight End:	April 29, 2026 07:22 PM

LOCATION DETAILS

Flight Address:	Canadian Bushplane Heritage Centre
Latitude:	46° 30' 16.92" N (46.505)
Longitude:	84° 19' 25.99" W (-84.324)
Altitude / Radius:	400 ft / 926.0 m (0.5 nm)
Classification:	UNCONTROLLED
FIR / Contact:	CZYZ / 905-676-4509





REPORT CONTENTS

Site Survey • Obstacles (if available) • Nearby Aerodromes • Canadian Aviation Regulations • GFA • Aerodrome Supplements • METAR & TAF • NOTAMs • CFS

Flight Map & MODEL Details

MISSION LOCATION SURVEY

MISSION LOCATION DETAILS

ROLE	LATITUDE	LONGITUDE
 MODEL	46° 30' 16.92" N 46.505	84° 19' 25.99" W -84.324
 Pilot		
 Payload Op.		
 Observer		

Airspace Classification

MISSION LOCATION SURVEY

AIRSPACE MAP



OVERLYING AIRSPACES

Class	Name	Floor	Ceiling
E	Southern Ontario Low Level Control Area f) [CAE]	3500MSL	18000MSL
E	Sault Ste. Marie, ON [TA]	700AGL	18000MSL
E	Sault Ste. Marie, ON [CAE]	2800AGL	18000MSL
E	T675 Fixed RNAV Route	2200AGL	18000MSL
E	T776 Fixed RNAV Route	2200AGL	18000MSL
E	T810 Fixed RNAV Route	2200AGL	18000MSL

NEAREST AERODROMES & DISTANCE FROM OPERATION

SAULT STE. MARIE (CPX8 - WATERDROME - Reg)	Lat: 46.504	Long: -84.323	0.103KM	0.06NM	SE
SAULT STE. MARIE (CNR3 - HELIPORT - Reg)	Lat: 46.504	Long: -84.323	0.103KM	0.06NM	SE
PARTRIDGE POINT (CPP9 - WATERDROME - Reg)	Lat: 46.514	Long: -84.248	5.899KM	3.19NM	E

CANADA WATER AERODROME SUPPLEMENT

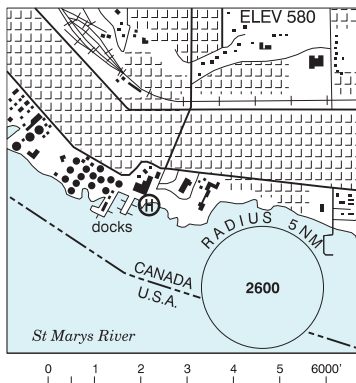
Effective 0901Z 19 March 2026 to 0901Z 18 February 2027

B230 AERODROME/FACILITY DIRECTORY

SAULT STE. MARIE ON

CPX8

REF	N46 30 16 W84 19 24 Adj S 7°W UTC-5(4) Elev 580' A5001
OPR	Cdn Bushplane Heritage Centre 705-945-6242 Reg
PF	B1 avbl 13-22Z‡ C-2,3,4,5,6
FLT PLN	FIC London 866-WXBRIEF (Toll free within Canada) or 866-541-4104 (Toll free within Canada & USA)
SERVICES	12-23Z May-Oct
FUEL	100LL PN Humphrey Aviation Service 705-542-2590
S	1,2,3,4,5
A/D DATA	Open water May-Nov. Current 5 kt, ramp, slipway
LIGHTING	Floodlit 24 hrs.
COMM	ATF tfc 122.7 2NM 3000 ASL
PRO	See Sault Ste. Marie VTPC.
CAUTION	Co-lctd heliport, helipads aprx 200' E of docks. High lvl of tfc in vic Sault, Michigan aprt, also on 122.7. Ramp usage is dependent on lvl of St. Mary's River. Ctc opr.



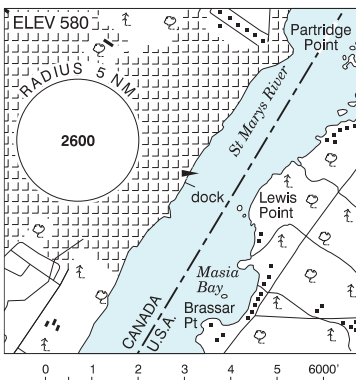
SAULT STE. MARIE FSS-RCO

London 119.4 (RAAS) 0345-1120Z‡ (N43 01 W81 09)

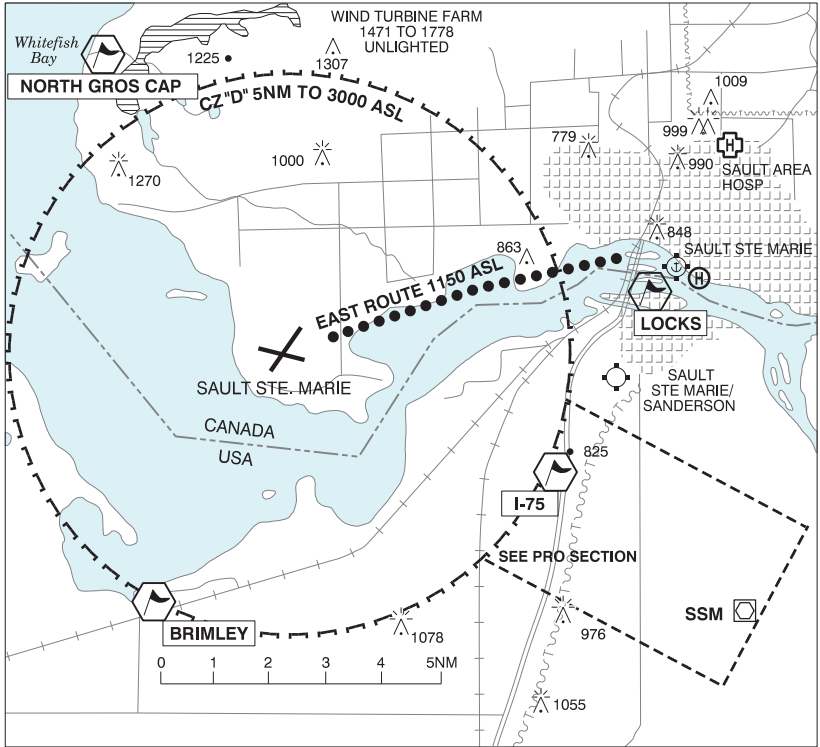
SAULT STE. MARIE / PARTRIDGE POINT ON

CPP9

REF	N46 30 51 W84 14 54 Adj E 7°W (2023) UTC-5(4) Elev 580' A5001
OPR	Mark Dick 705-257-8587 Reg PPR
PF	C-1,2,3,4,5,6,7
FLT PLN	FIC London 866-WXBRIEF (Toll free within Canada) or 866-541-4104 (Toll free within Canada & USA)
A/D DATA	Open water May-Nov.
DOCKS	Ltd moorings (no long-term parking), beach, ramp
COMM	ATF tfc 122.7 2NM 3600 ASL
CAUTION	Heavy boat tfc in St. Mary's River. Heavy tfc vic Sault Michigan aprt.

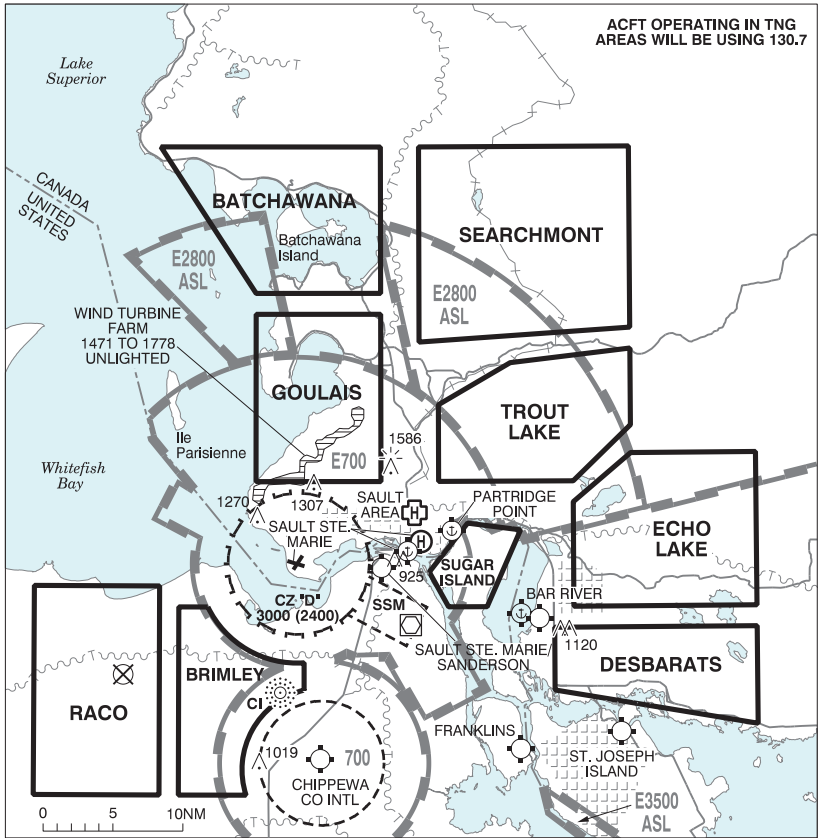


SAULT STE. MARIE VFR TERMINAL PROCEDURES CHART



NAME	IDENT	LAT/LONG
BRIMLEY	VCBRM	N46° 24' 45" W084° 34' 00"
I-75	VCISF	N46° 26' 00" W084° 23' 36"
LOCKS	VCLKS	N46° 30' 12" W084° 21' 18"
NORTH GROS CAP	VCNGC	N46° 34' 30" W084° 35' 30"

SAULT STE. MARIE VFR TERMINAL PROCEDURES CHART - TRAINING AREAS



ONTARIO

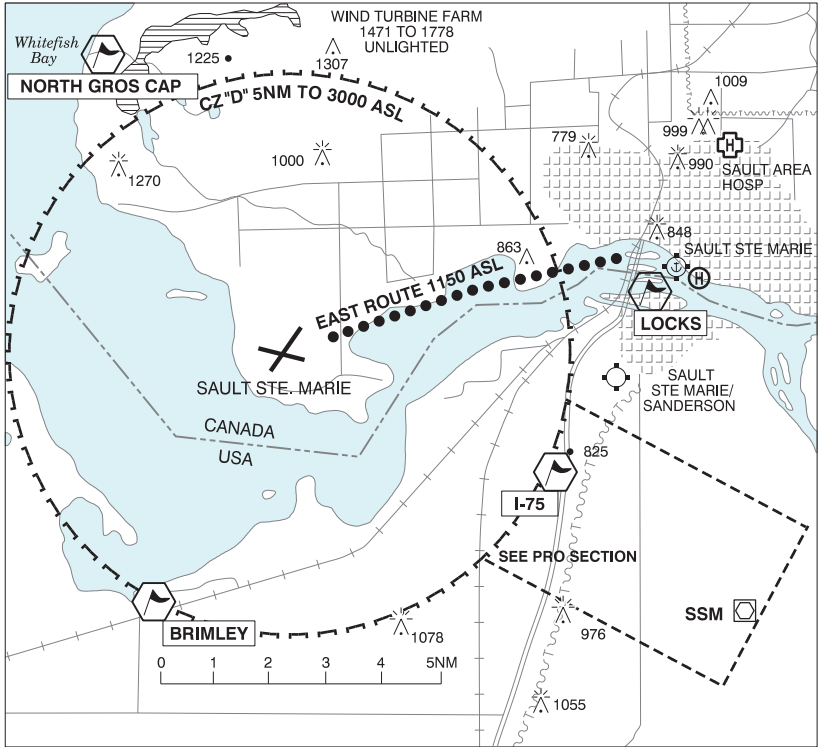
AERODROME / FACILITY DIRECTORY

SAULT STE. MARIE ON (Heli)

CNR3

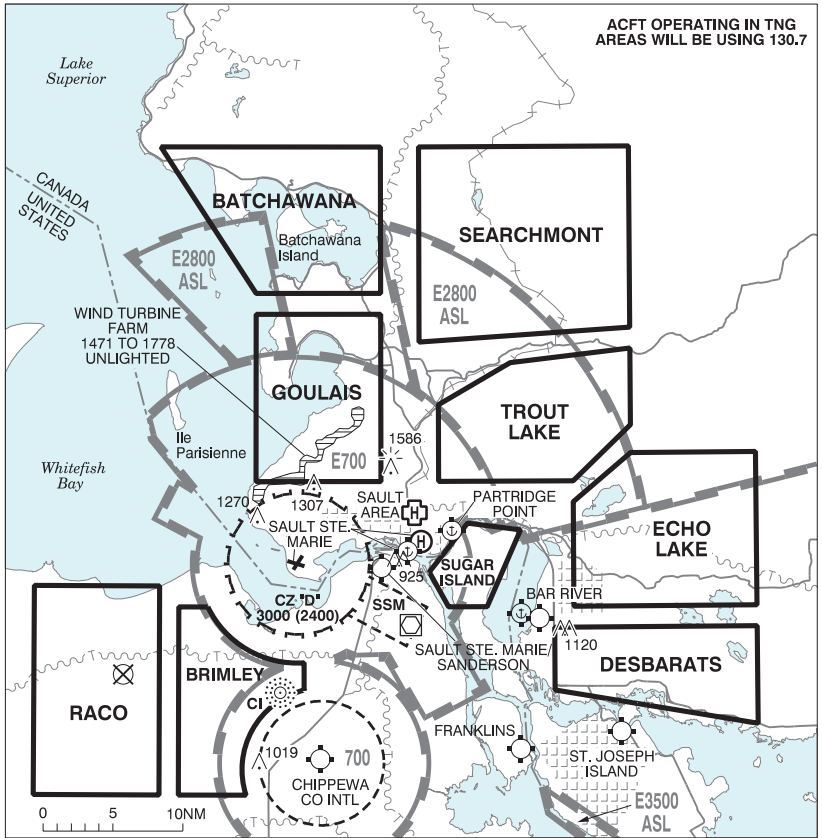
REF	N46 30 16 W84 19 24 Adj S 7°W UTC-5(4) Elev 580' A5001	
OPR	Canadian Bushplane Heritage Centre 705-945-6242 Reg	
PF	B1 avbl 13-22Z‡ C-2,3,4,5,6	
FLT PLN		
FIC	London 866-WXBRIEF (Toll free within Canada) or 866-541-4104 (Toll free within Canada & USA)	
SERVICES	13-22Z‡ May-Oct, dawn til dusk Nov-Apr	
FUEL	100LL Humphrey Aviation Services 705-542-2590	
HELI DATA	57' dia concrete	
RCR	Opr	
LIGHTING	Floodlit Apron; Aiming point lighting, 6 red lgts.	
COMM		
ATF	tfc 122.7 2NM 3000 ASL	
PRO	Arr/dep btwn 131°-246° fr heli. Arr/dep hover area & aiming point lctd S of pad.	
CAUTION	Co-located water aerodrome, docks just W of helipads. Hi lvl of tfc in vic Sault, Michigan aprt, also on 122.7	

SAULT STE. MARIE VFR TERMINAL PROCEDURES CHART



NAME	IDENT	LAT/LONG
BRIMLEY	VCBRM	N46° 24' 45" W084° 34' 00"
I-75	VCISF	N46° 26' 00" W084° 23' 36"
LOCKS	VCLKS	N46° 30' 12" W084° 21' 18"
NORTH GROS CAP	VCNGC	N46° 34' 30" W084° 35' 30"

SAULT STE. MARIE VFR TERMINAL PROCEDURES CHART - TRAINING AREAS



CANADA WATER AERODROME SUPPLEMENT

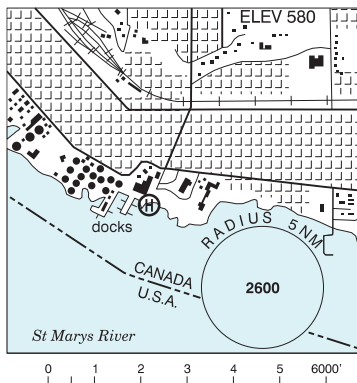
Effective 0901Z 19 March 2026 to 0901Z 18 February 2027

B230 AERODROME/FACILITY DIRECTORY

SAULT STE. MARIE ON

CPX8

REF	N46 30 16 W84 19 24 Adj S 7°W UTC-5(4) Elev 580' A5001
OPR	Cdn Bushplane Heritage Centre 705-945-6242 Reg
PF	B1 avbl 13-22Z‡ C-2,3,4,5,6
FLT PLN	FIC London 866-WXBRIEF (Toll free within Canada) or 866-541-4104 (Toll free within Canada & USA)
SERVICES	12-23Z May-Oct
FUEL	100LL PN Humphrey Aviation Service 705-542-2590
S	1,2,3,4,5
A/D DATA	Open water May-Nov. Current 5 kt, ramp, slipway
LIGHTING	Floodlit 24 hrs.
COMM	ATF tfc 122.7 2NM 3000 ASL
PRO	See Sault Ste. Marie VTPC.
CAUTION	Co-lctd heliport, helipads aprx 200' E of docks. High lvl of tfc in vic Sault, Michigan aprt, also on 122.7. Ramp usage is dependent on lvl of St. Mary's River. Ctc opr.



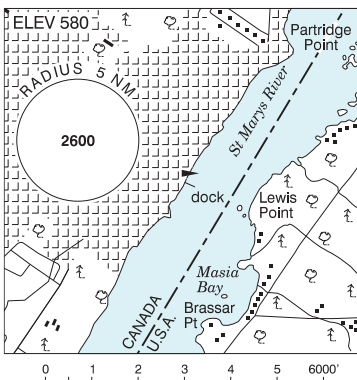
SAULT STE. MARIE FSS-RCO

London 119.4 (RAAS) 0345-1120Z‡ (N43 01 W81 09)

SAULT STE. MARIE / PARTRIDGE POINT ON

CPP9

REF	N46 30 51 W84 14 54 Adj E 7°W (2023) UTC-5(4) Elev 580' A5001
OPR	Mark Dick 705-257-8587 Reg PPR
PF	C-1,2,3,4,5,6,7
FLT PLN	FIC London 866-WXBRIEF (Toll free within Canada) or 866-541-4104 (Toll free within Canada & USA)
A/D DATA	Open water May-Nov.
DOCKS	Ltd moorings (no long-term parking), beach, ramp
COMM	ATF tfc 122.7 2NM 3600 ASL
CAUTION	Heavy boat tfc in St. Mary's River. Heavy tfc vic Sault Michigan aprt.



CANADA WATER AERODROME SUPPLEMENT

Effective 0901Z 19 March 2026 to 0901Z 18 February 2027

AERODROME/FACILITY DIRECTORY B231

SAVANT LAKE (STURGEON LAKE) ON

CJP3

REF	N50 12 W90 41 3.5SE 2°W UTC-6(5) Elev 1342' A5008	
OPR	Rusty Myers Flying Svc Ltd 807-788-5224 May-Oct or 866-707-7637 Reg	
PF	B-1	
FLT PLN	Pilots to open/close VFR flt plan with London rdo, FISE or by phone	
FIC	London 866-WXBRIEF (Toll free within Canada) or 866-541-4104 (Toll free within Canada & USA)	
SERVICES		
FUEL	100LL (D), JA-1	
OIL	All	
S	5	
A/D DATA	Open water mid May-Oct. Sand bottom, dock & beach.	
COMM		
ATF	tfc 122.8 5NM 4400 ASL	
CAUTION	Twr 1700 ASL 2.5NM NE. Small boat tfc. Reef SE.	

SAWDUST BAY ON — See NOBEL / SAWDUST BAY