

---

# FLIGHT PLAN & SITE SURVEY

---

F 87-3990 SUDBURY MODEL AIRCRAFT CLUB-  
GARSON/CONISTON ROAD SUDBURY

April 29, 2026



**IMPORTANT NOTICE**

Please ensure you have received all required authorizations prior to flight. This Site Survey was created using RPAS Wilco. The user accepts all responsibility for the accuracy of the information.

Terms & Conditions: [rpswilco.com/#tnc](https://rpswilco.com/#tnc)

# Mission Information

F 87-3990 SUDBURY MODEL AIRCRAFT CLUB- GARSON/CONISTON ROAD SUDBURY

## FLIGHT DETAILS

Reference No:	<b>MAAC-87-3990</b>
Project Name:	<b>SUDBURY MODEL AIRCRAFT CLUB</b>
Pilot Name:	<b>MAAC</b>
Pilot Certificate:	
Mission Type:	<b>VLOS</b>
Flight Start:	<b>April 29, 2026 06:22 PM</b>
Flight End:	<b>April 29, 2026 07:22 PM</b>

## LOCATION DETAILS

Flight Address:	<b>GARSON/CONISTON ROAD SUDBURY</b>
Latitude:	<b>46° 30' 19.30" N ( 46.505 )</b>
Longitude:	<b>80° 50' 18.30" W ( -80.838 )</b>
Altitude / Radius:	<b>400 ft / 926.0 m ( 0.5 nm)</b>
Classification:	<b>CONTROLLED</b>
FIR / Contact:	<b>CZYZ / 905-676-4509</b>

### NOTES

Your flight is in controlled airspace.  
If your RPAS is > 250g, please obtain RPAS Flight Authorization using the NavDrone app or by contacting NavCanada. (CARs 901.71)





## REPORT CONTENTS

Site Survey • Obstacles (if available) • Nearby Aerodromes • Canadian Aviation Regulations • GFA • Aerodrome Supplements • METAR & TAF • NOTAMS • CFS

# Flight Map & MODEL Details

MISSION LOCATION SURVEY

## MISSION LOCATION DETAILS

ROLE	LATITUDE	LONGITUDE
 MODEL	46° 30' 19.30" N 46.505	80° 50' 18.30" W -80.838
 Pilot		
 Payload Op.		
 Observer		

# Airspace Classification

MISSION LOCATION SURVEY

## AIRSPACE MAP



## OVERLYING AIRSPACES

Class	Name	Floor	Ceiling
E	Southern Ontario Low Level Control Area f) [CAE]	3500MSL	18000MSL
E	Sudbury, ON [CZ]	SFC	4000MSL
E	Sudbury, ON [TA]	2400AGL	18000MSL
E	T656 Fixed RNAV Route	2200AGL	18000MSL

## NEAREST AERODROMES & DISTANCE FROM OPERATION

CONISTON (CSC9 - AERODROME - NA)	Lat: 46.482	Long: -80.834	2.62KM	1.41NM	S
RAMSEY LAKE (CNB8 - WATERDROME - Reg)	Lat: 46.487	Long: -80.959	9.453KM	5.1NM	W
SUDBURY (CYSB - AERODROME - Cert)	Lat: 46.625	Long: -80.798	13.657KM	7.37NM	N

## ONTARIO

## AERODROME / FACILITY DIRECTORY

## SUDBURY / CONISTON ON

CSC9

<b>REF</b>	N46 28 56 W80 50 02 6E 11°W UTC-5(4) Elev 886' A5000 A5001	
<b>OPR</b>	CentralNorth Flying Club 705-694-9000 Reg PPR	
<b>PF</b>	A-1 avbl 11-02Z seasonal C-1,2,4,5 D-3,6	
<b>FLT PLN</b>	<b>FIC</b> London 866-WXBRIEF (Toll free within Canada) or 866-541-4104 (Toll free within Canada & USA)	
<b>SERVICES</b>	<b>FUEL</b> 100LL <b>OIL</b> W80, 15W-50, 80 <b>S</b> 1,4,5,6	
<b>RWY DATA</b>	Rwy 13/31 2260x35 treated gravel Rwy 13 up 2.3% Rwy 04/22 1190x35 treated gravel	
<b>APRON</b>	Overnight prkg fees only (waived with fuel purchase).	
<b>RCR</b>	Opr PN No win maint.	
<b>COMM</b>	<b>RCO</b> London rdo 123.475 (FISE) 126.7(bcst) <b>ATF</b> tfc 123.0 5NM 3900 ASL Excluding the Sudbury aprt CZ. <b>PAL</b> Toronto Ctr 135.5	
<b>CAUTION</b>	Aerodrome is within 8NM of CYSB, obstacles on apch to Rwy 31 & Rwy 04, twr aprx 1/2NM E of Rwy 31 hgt unkn, twr aprx 1NM NW of aerodrome & twin smoke stacks aprx 400 AGL 1NM SW of aerodrome. Extv float/ski/helicopter tfc in vic Azilda, ATF 122.8.	

# CANADA WATER AERODROME SUPPLEMENT

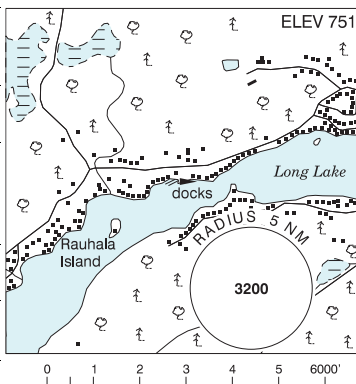
Effective 0901Z 19 March 2026 to 0901Z 18 February 2027

AERODROME/FACILITY DIRECTORY B253

## SUDBURY / LONG LAKE (WAVY) ON

CLL6

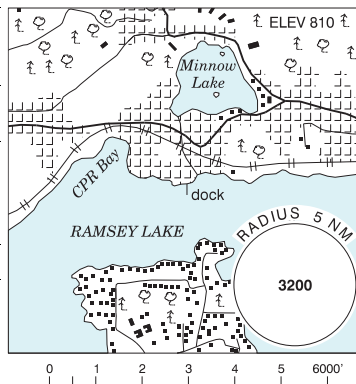
<b>REF</b>	N46 24 21 W81 01 57 5.4SSW 10°W (2023) UTC-5(4) Elev 751' A5000 A5001
<b>OPR</b>	Fisher Wavy Inc. 705-688-4411 Reg PPR
<b>FLT PLN</b>	<b>FIG</b> London 866-WXBRIEF (Toll free within Canada) or 866-541-4104 (Toll free within Canada & USA)
<b>A/D DATA</b>	Open water Apr-Nov. Ski ops dur win months, no win maint.
<b>COMM</b>	<b>ATF</b> tfc 122.8 5NM 3900 ASL
<b>CAUTION</b>	Heavy boat tfc during sum. Heavy snowmobile/vehicle tfc dur win.



## SUDBURY / RAMSEY LAKE ON

CNB8

<b>REF</b>	N46 29 12 W80 57 32 1.4ESE 10°W (2018) UTC-5(4) Elev 810' A5000 A5001
<b>OPR</b>	David Chisholm 705-662-1609 Reg PPR
<b>FLT PLN</b>	<b>FIG</b> London 866-WXBRIEF (Toll free within Canada) or 866-541-4104 (Toll free within Canada & USA)
<b>A/D DATA</b>	Open water May-Nov
<b>COMM</b>	<b>ATF</b> tfc 123.0 5NM centred on Sudbury (Health Sciences North) 1.9NM WSW 4000 ASL, excluding the Azilda ATF area
<b>CAUTION</b>	Extv float/ski/helicopter tfc in vic Azilda, ATF 122.8. See Sudbury VTPC.



# CANADA WATER AERODROME SUPPLEMENT

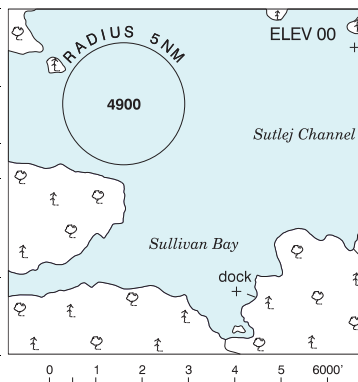
Effective 0901Z 19 March 2026 to 0901Z 18 February 2027

## B254 AERODROME/FACILITY DIRECTORY

### SULLIVAN BAY BC

CAV5

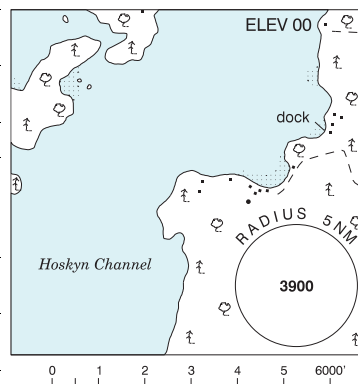
<b>REF</b>	N50 53 08 W126 49 37 Adj N 18°E (2014) UTC-8(7) Elev 00' A5004
<b>OPR</b>	Broughton Island Ventures Ltd 604-484-9193 Reg
<b>PF</b>	B-1,2 D-3,4,5,6 (15 May-1 Oct)
<b>FLT PLN</b>	<b>FIG</b> Kamloops 866-WXBRIEF (Toll free within Canada) or 866-541-4101 (Toll free within Canada & USA)
<b>SERVICES</b>	<b>FUEL</b> MG-2 <b>S</b> 4,5
<b>COMM</b>	<b>ATF</b> tfc 123.2 2NM 1500 ASL
<b>CAUTION</b>	Extensive boat activity in area.



### SURGE NARROWS BC

CAG9

<b>REF</b>	N50 13 W125 07 Adj NW 18°E (2012) UTC-8(7) Elev 00' A5004
<b>OPR</b>	Strathcona Regional District 877-830-2990 Reg
<b>PF</b>	B-1
<b>FLT PLN</b>	<b>FIG</b> Kamloops 866-WXBRIEF (Toll free within Canada) or 866-541-4101 (Toll free within Canada & USA)
<b>SERVICES</b>	<b>S</b> 7
<b>COMM</b>	<b>ATF</b> tfc 123.2 2NM 1500 ASL
<b>NAV</b>	<b>NDB</b> CAMPBELL RIVER YBL 203 (LZ) N50 00 23 W125 21 27
<b>CAUTION</b>	Moderate current at dock under certain tidal cond. A/D within CYA 112(A) to 4500 cont days.



## ONTARIO

## AERODROME / FACILITY DIRECTORY

## SUDBURY ON

CYSB

<b>REF</b>	N46 37 32 W80 47 52 11NE 10°W (2012) UTC-5(4) Elev 1143' A5000 A5001 LO4 HI4 HI5 CAP	
<b>OPR</b>	Muni 705-693-2514 Cert	
<b>PF</b>	A-1,2,3,6,7 C-4,5	
<b>CUST</b>	AOE/15 888-226-7277 1330-2130Z± Mon-Fri exc hols	
<b>FLT PLN</b>	Pilots to open/close VFR flt plan with London rdo, FISE or by phone.	
<b>FIC</b>	London 866-WXBRIEF (Toll free within Canada) or 866-541-4104 (Toll free within Canada & USA)	
<b>WX</b>	METAR H24. TAF H24, issue times: 02, 08, 14 & 20Z.	
<b>SERVICES</b>	Call out chg may be levied for one or more svcs.	
<b>FUEL</b>	100LL, JA-1 (FSII avbl), HPR	
<b>OIL</b>	All	
<b>S</b>	1,2,3	
<b>ARFF</b>	PARTICIPATING CAT 5 (CAT 7 3 hrs PN) 1100-0400Z± O/T PN call out chg.	
<b>SUP FL</b>	D & A-ice	
<b>PVT ADV</b>	Northern Aviation Services/Shell 122.95 705-693-2972 12-02Z± Mon-Fri, 13-01Z± Sat-Sun Page 24 hrs 705-671-6945; Executive Aviation Fuels Ltd/World Fuels Service 122.35 0900-0100Z± O/T 705-699-0079 or 705-822-6585	
<b>MIL CON</b>	Executive Aviation 519-453-5370	
<b>RWY DATA</b>	Rwy 04(040°)/22(220°) 6600x150 ASPH Rwy 12(116°)/30(296°) 5000x150 ASPH Rwy 12 Up 0.3%	
<b>RWY CERT</b>	Rwy 04 RVR 1200(1/4sm)/Rwy 22 RVR 1200(1/4sm) AGN IV Rwy 12/30 AGN IV	
<b>TWY CERT</b>	Twy D AGN IIIB	
<b>APRON</b>	Apron I rstd to sked commercial air carrier by stand assignment only fr Greater Sudbury Airport. Apron III itinerant acft parking to be arranged through PVT ADV.	
<b>RCR</b>	Opr RSC/CRFI & win maint avbl 11-04Z± O/T 8 hrs PN, call out chg. PCN	
<b>LIGHTING</b>	04-AO(TE HI) P2, 22-AN(TE HI), 12-AO(TE ME) P2, 30-AO(TE ME) P2	
<b>COMM</b>		
<b>RADIO</b>	125.5 (V) (emerg only 705-693-3661)	
<b>RCO</b>	London rdo 123.475 (FISE) 126.7(bcst)	
<b>ATIS</b>	127.4	
<b>CLNC DEL</b>	121.8 PTC avbl	
<b>MF</b>	rdo 125.5 7NM 4000 ASL (CAR 602.98)	
<b>PAL</b>	Toronto Ctr 135.5	
<b>NAV</b>		
<b>DME</b>	YSB 112.3 Ch 70 N46 37 45 W80 47 54 (1171')	
<b>ILS</b>	ISB 110.3 (Rwy 22) RVR	
<b>PRO</b>	Rgt hand circuits Rwy 22 & 30 (CAR 602.96).	
<b>CAUTION</b>	Extv float/ski/helicopter tfc in vic Azilda, ATF 122.8 and Coniston A/D 8NM S, ATF 123.0.	

**SUBSBURY VFR TERMINAL PROCEDURES CHART**

