
FLIGHT PLAN & SITE SURVEY

G 95-4013 ALGONQUIN AEROMODELLERS- FIELD - 286 TV
TOWER RD PEMBROKE

April 29, 2026



IMPORTANT NOTICE

Please ensure you have received all required authorizations prior to flight. This Site Survey was created using RPAS Wilco. The user accepts all responsibility for the accuracy of the information.

Terms & Conditions: rpswilco.com/#tnc

Mission Information

G 95-4013 ALGONQUIN AEROMODELLERS- FIELD - 286 TV TOWER RD PEMBROKE

FLIGHT DETAILS

Reference No:	MAAC-95-4013
Project Name:	ALGONQUIN AEROMODELLERS
Pilot Name:	MAAC
Pilot Certificate:	
Mission Type:	VLOS
Flight Start:	April 29, 2026 06:22 PM
Flight End:	April 29, 2026 07:22 PM

LOCATION DETAILS

Flight Address:	FIELD - 286 TV TOWER RD PEMBROKE
Latitude:	45° 49' 25.10" N (45.824)
Longitude:	77° 9' 13.80" W (-77.154)
Altitude / Radius:	400 ft / 926.0 m (0.5 nm)
Classification:	UNCONTROLLED
FIR / Contact:	CZYZ / 905-676-4509





REPORT CONTENTS

Site Survey • Obstacles (if available) • Nearby Aerodromes • Canadian Aviation Regulations • GFA • Aerodrome Supplements • METAR & TAF • NOTAMs • CFS

Flight Map & MODEL Details

MISSION LOCATION SURVEY

MISSION LOCATION DETAILS

ROLE	LATITUDE	LONGITUDE
 MODEL	45° 49' 25.10" N 45.824	77° 9' 13.80" W -77.154
 Pilot		
 Payload Op.		
 Observer		

Airspace Classification

MISSION LOCATION SURVEY

AIRSPACE MAP



OVERLYING AIRSPACES

Class	Name	Floor	Ceiling
E	Pembroke, ON [TA]	700AGL	18000MSL
E	T663 Fixed RNAV Route	2200AGL	18000MSL
E	Southern Ontario Low Level Control Area a) [CAE]	2500MSL	6500MSL
E	Southern Ontario Low Level Control Area d) [CAE]	6500MSL	18000MSL

NEAREST AERODROMES & DISTANCE FROM OPERATION

PEMBROKE (REGIONAL HOSPITAL) (CNG5 - HELIPORT - Reg)	Lat: 45.815	Long: -77.108	3.679KM	1.99NM	E
PEMBROKE (CYTA - AERODROME - Cert)	Lat: 45.864	Long: -77.251	8.763KM	4.73NM	NW
VERMETTE LANDING (CVL4 - WATERDROME - Reg)	Lat: 45.943	Long: -77.267	15.902KM	8.59NM	NW

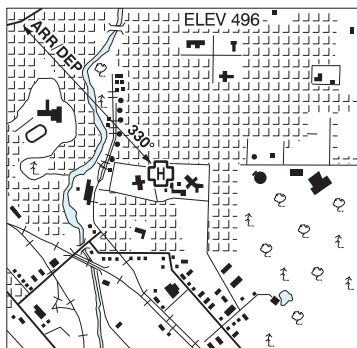
ONTARIO

AERODROME / FACILITY DIRECTORY

PEMBROKE (REGIONAL HOSP) ON (Heli)

CNG5

REF	N45 48 55 W77 06 28 Adj 13°W UTC-5(4) Elev 496' A5000 A5001
OPR	Pembroke Regional Hosp 613-732-2811 Cert PPR
FLT PLN	
FIC	London 866-WXBRIEF (Toll free within Canada) or 866-541-4104 (Toll free within Canada & USA)
HELI DATA	86' x 86' asphalt 114' x 114' Max heli overall length 57.5'
RCR	Opr
LIGHTING	DR RY(LO) RF(FL) ARCAL-122.9 type J
PRO	Arr/dep 330° fr heli, slope 8% (H3) day/night use.



ONTARIO

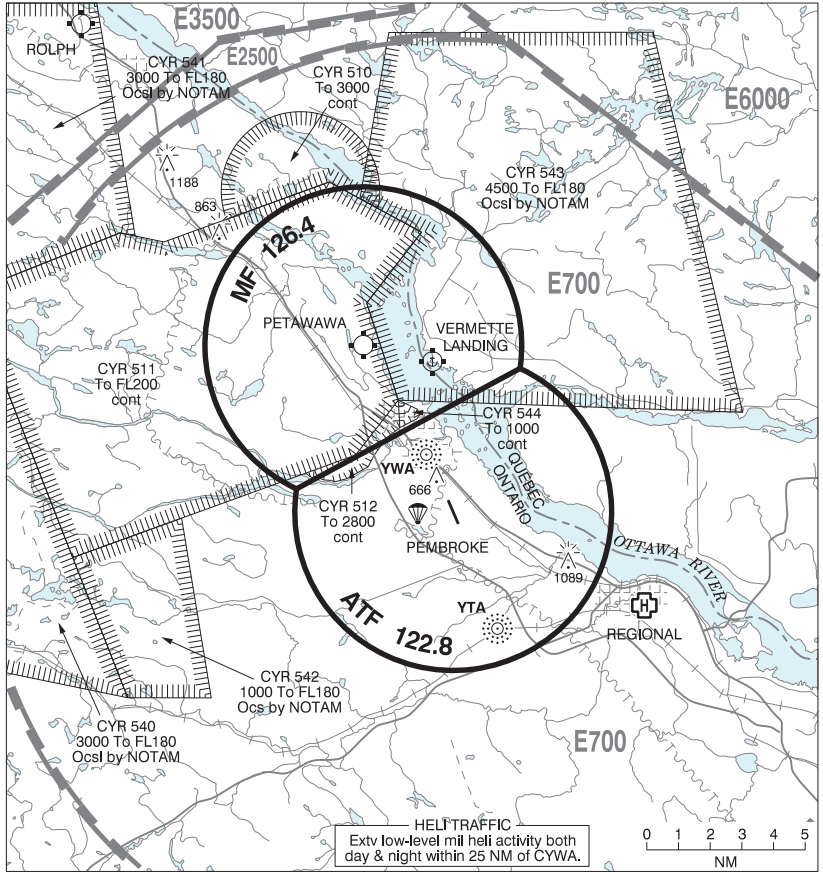
AERODROME / FACILITY DIRECTORY

PEMBROKE ON

CYTA

REF	N45 51 52 W77 15 05 5.2NW 13°W UTC-5(4) Elev 532' A5000 A5001 LO6 LO7 HI5 CAP	
OPR	Pembroke & Area Aprt Comsn 613-687-5300/4910 maint or 855-539-3019 11-21Z† Mon-Fri, 13-21Z† Sat, Sun & hol. APM after hrs Cert Ldg fees apply to commercial acft.	
PF	A-1,2 ltd hrs, 6,7	
CUST	AOE/M Mil flt only	
FLT PLN	FIC London 866-WXBRIEF (Toll free within Canada) or 866-541-4104 (Toll free within Canada & USA)	
SERVICES	Call-out chg may be levied for one or more svcs. FUEL 100LL, JA-1 11-21Z† Mon-Fri, 13-21Z† Sat, Sun & hol OIL 80, 100, 100W, 15W50 S 1,2,3,4,5,6,7 SUP FL D-ice JASU CE14	
RWY DATA	Rwy 17(172°)/35(352°) 5000x100 asphalt	
RWY CERT	Rwy 17/35 AGN IIIB	
TWY	Twy B seasonal use, May 1-Oct 31, no win maint.	
RCR	Opr 11-21Z† Mon-Fri, 13-21Z† Sat, Sun & hol. CRFI/RSC avbl ltd hrs. PCN	
LIGHTING	17-(TE ME)V1, 35-AD AS(TE ME) V1 ARCAL-122.8 type K	
COMM	ATF UNICOM (AU) ltd hrs O/T tfc 122.8 5NM 3500 ASL PAL Montréal Ctr 135.2 A/G Petawawa Advsy 126.4 or 250.1 13-2130Z† Mon-Fri, O/T PPR, DND 613-588-5789	
NAV	NDB YTA 409 (L) N45 48 12 W77 13 06	
PRO	MIL Crash response for mil a/c provided by GRN Petawawa, 30 min deployment time rqrd. Mil call CSN 677-5555, com 613-588-5555. Airborne diversions thru Petawawa advsy Mon-Fri 13-2130Z† on 126.4 250.1 or thru Québec FIC 126.7 123.15. Emerg crew monitors 122.8R when in posn at CYTA.	
CAUTION	Parachuting over aprt 12,500 ASL & below, ocsd daylight by NOTAM. HELI TRAFFIC: Extv low-level mil Heli activity W, E & NE of A/D.	

PEMBROKE / PETAWAWA VFR TERMINAL PROCEDURES CHART



CANADA WATER AERODROME SUPPLEMENT

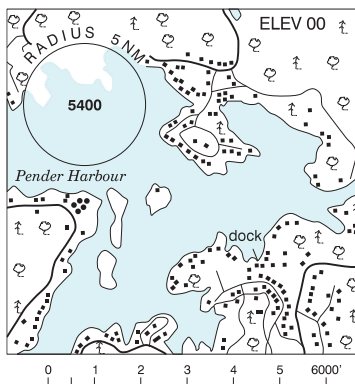
Effective 0901Z 19 March 2026 to 0901Z 18 February 2027

B178 AERODROME/FACILITY DIRECTORY

PENDER HARBOUR BC

CAG8

REF	N49 37 W124 01 Adj 17°E (2016) UTC-8(7) Elev 00' A5004
OPR	Pender Harbour Authority 604-883-2234 Reg
PF	B-1,2 C-3,4,5
FLT PLN	FIC Kamloops 866-WXBRIEF (Toll free within Canada) or 866-541-4101 (Toll free within Canada & USA)
SERVICES	S 7
A/D DATA	01 May to 30 Sep dock avbl 16-23Z
COMM	ATF tfc 123.2 2NM 1500 ASL
CAUTION	Extv boat tfc May thru Sep.



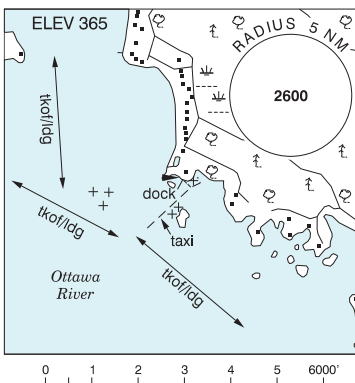
PENTICTON FSS – RCO

Kelowna 119.6 (RAAS) 0630-1330Z† (N49 56 W119 22)

PETAWAWA \ VERMETTE LANDING QC

CVL4

REF	N45 56 35 W77 16 00 2.9NNE 12°W (2023) UTC-5(4) Elev 365' A5000 A5001
OPR	Luc Vermette 819-650-0256 Reg PPR
PF	B-1 D-2,3,4,5,6
FLT PLN	FIC Québec 866-GOMÉTÉO or 866-WXBRIEF (Toll free within Canada) or 866-541-4105 (Toll free within Canada & USA)
SERVICES	FUEL 100LL Emerg only, ctc opr. S 4,5
A/D DATA	Open water May-Oct. Current less than 5 kts. Depth 2' min. at dock.
DOCKS	Gravel Ramp. Sand beach.
COMM	MF Petawawa advsy 126.4 250.1 advsy opr 1130-0700Z† Mon-Fri, exc hols O/T tfc 126.4. Opr dates and hrs may vary without notice. Ctc Sqn Ops 613-687-5511 Ext 7880 (427 sqn) Ext 8000 (450 sqn) O/T PPR 48hrs min thru Petawawa BOPs 613-687-5511 Ext 6403 5NM centred on Petawawa heli 2.1NM WNW 3400 ASL (CAR 602.98).
PRO	Remain clear of CYR511. See PEMBROKE / PETAWAWA VTFC. Circuits NE of river (CAR 602.96). Touch-and-go not auth (CAR 602.96).
CAUTION	Heavy helicopter traffic 24/7. Heavy boat traffic. Rocks in vicinity of islands near docks. Buoys line to docks.



PETPESWICK LAKE NS — See MUSQUODOBOIT HARBOUR / PETPESWICK LAKE