
FLIGHT PLAN & SITE SURVEY

H 379-4343 PACIFIC AEROMODELLERS CLUB- CLAYBURN
VILLAGE PARK

April 29, 2026



IMPORTANT NOTICE

Please ensure you have received all required authorizations prior to flight. This Site Survey was created using RPAS Wilco. The user accepts all responsibility for the accuracy of the information.

Terms & Conditions: rpswilco.com/#tnc

Mission Information

H 379-4343 PACIFIC AEROMODELLERS CLUB- CLAYBURN VILLAGE PARK

FLIGHT DETAILS

Reference No:	MAAC-379-4343
Project Name:	PACIFIC AEROMODELLERS CLUB
Pilot Name:	MAAC
Pilot Certificate:	
Mission Type:	VLOS
Flight Start:	April 29, 2026 04:13 PM
Flight End:	April 29, 2026 05:13 PM

LOCATION DETAILS

Flight Address:	CLAYBURN VILLAGE PARK
Latitude:	49° 4' 57.80" N (49.083)
Longitude:	122° 15' 37.10" W (-122.26)
Altitude / Radius:	400 ft / 926.0 m (0.5 nm)
Classification:	CONTROLLED
FIR / Contact:	CZVR / 604-586-4500

NOTES

Your flight is in controlled airspace.

If your RPAS is > 250g, please obtain RPAS Flight Authorization using the NavDrone app or by contacting NavCanada. (CARs 901.71)





REPORT CONTENTS

Site Survey • Obstacles (if available) • Nearby Aerodromes • Canadian Aviation Regulations • GFA • Aerodrome Supplements • METAR & TAF • NOTAMS • CFS

Flight Map & MODEL Details

MISSION LOCATION SURVEY

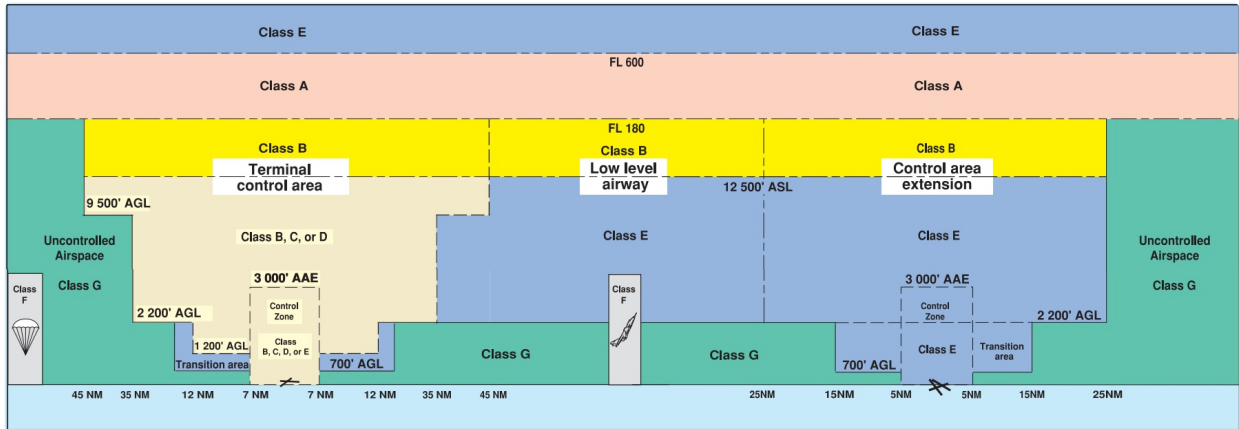
MISSION LOCATION DETAILS

ROLE	LATITUDE	LONGITUDE
 MODEL	49° 4' 57.80" N 49.083	122° 15' 37.10" W -122.26
 Pilot		
 Payload Op.		
 Observer		

Airspace Classification

MISSION LOCATION SURVEY

AIRSPACE MAP



OVERLYING AIRSPACES

Class	Name	Floor	Ceiling
C	Vancouver, BC s) [TCA]	6500MSL	8500MSL
C	Vancouver, BC t) [TCA]	8500MSL	9500MSL
C	Vancouver, BC u) [TCA]	9500MSL	12500MSL
B	Vancouver, BC v) [TCA]	12500MSL	18000MSL
C	Vancouver, BC l) [TCA]	4500MSL	6500MSL
E	V342-1 VHF/UHF Airway	2200AGL	18000MSL
E	T645-1 Fixed RNAV Route	2200AGL	18000MSL
C	Abbotsford, BC [CZ]	SFC	4500MSL
E	T800 Fixed RNAV Route	2200AGL	18000MSL

NEAREST AERODROMES & DISTANCE FROM OPERATION

ABBOTSFORD (SUMAS MOUNTAIN) (CSM7 - HELIPORT - Reg)	Lat: 49.105	Long: -122.197	5.233KM	2.83NM	NE
ABBOTSFORD (HOSP AND CANCER CENTRE) (CAB5 - HELIPORT - Reg)	Lat: 49.036	Long: -122.314	6.504KM	3.51NM	SW
ABBOTSFORD (CYXX - AERODROME/HELIPORT - Cert)	Lat: 49.025	Long: -122.36	9.694KM	5.23NM	SW

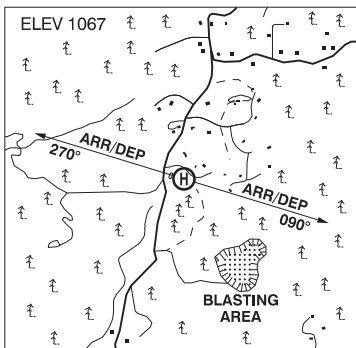
BRITISH COLUMBIA

AERODROME / FACILITY DIRECTORY

ABBOTSFORD (SUMAS MOUNTAIN) BC (Heli)

CSM7

REF	N49 06 18 W122 11 51 4.5NE 17°E (2011) UTC-8(7) Elev 1067' VTA A5004
OPR	Hydra Helicopters Inc. 604-309-8393 Reg PPR
PF	B-1 D-2,3,4,5,6
FLT PLN	FIC Kamloops 866-WXBRIEF (Toll free within Canada) or 866-541-4101 (Toll free within Canada & USA)
HELI DATA	FATO 60' x 60' CONC TLOF 60' x 60' CONC Safety Area 60' x 60'
RCR	Opr Day only
COMM	ATF tfc 123.2 1NM 2100 ASL
PRO	Arr/dep 090° or 270° fr heli to avoid overflight of built-up area and steep terrain
CAUTION	Extv tfc transiting E and W over the Fraser River. High trees S, W and N. Blasting area 2NM S. Acft tng area (CYA 182) 4NM E. CYXX CZ 1NM W.



BRITISH COLUMBIA

AERODROME / FACILITY DIRECTORY

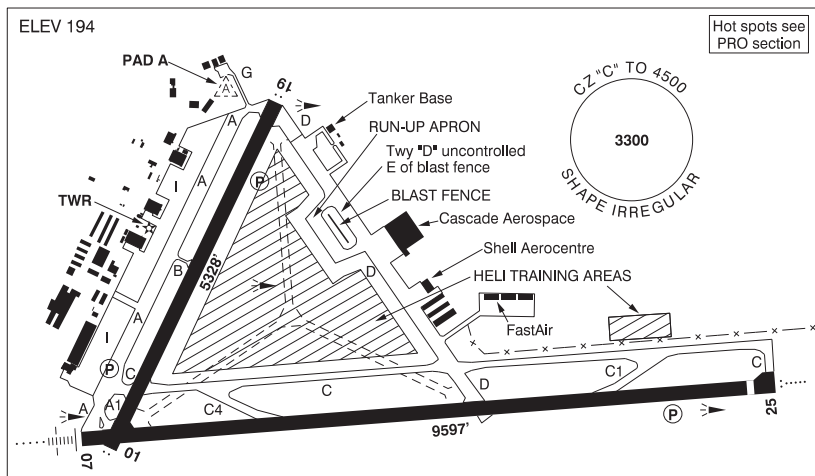
ABBOTSFORD (REGIONAL HOSP & CANCER CENTRE) BC (Heli)

CAB5

REF	N49 02 10 W122 18 51 17°E (2012) UTC-8(7) Elev 287' VTA A5004	
OPR	Abbotsford Regional Hosp & Cancer Centre 833-900-1516 Cert PPR	
FLT PLN	FIC Kamloops 866-WXBRIEF (Toll free within Canada) or 866-541-4101 (Toll free within Canada & USA)	
HELI DATA	FATO/TLOF 86' dia CONC Safety Area 115' dia Max heli overall length 57.4'	
RCR	Opr	
LIGHTING	RY(LO) DR	
COMM		
RCO	Cranbrook rdo 119.4 (RAAS) 07-15Z‡ Pacific rdo 122.5 (FISE) 126.7 (bcst)	
ATIS	119.8 15-07Z‡	
TWR	Abbotsford 119.4 (inner) 121.0 (outer) 15-07Z‡	
MF	Cranbrook rdo 119.4 07-15Z‡ CZ shape irregular 2500 ASL (CAR 602.98)	
A/G	Hosp Security 158.76 FM 3 min PN	
PRO	Heli lctd in CYR141. PPR fr Warden Pacific Institute. Ops rstd to acft auth by British Columbia Ambulance Service. Arr/dep 116° fr heli, slope 6% (H2) & 263° fr heli slope 16% (H1).	
CAUTION	Trees along edge of flt paths.	

ABBOTSFORD BC

CYXX



TORA FOR INTERSECTION DEPARTURES			LDA FOR LAND AND HOLD SHORT OPERATIONS (LAHSO CHART)		
RWY	INTXN	TORA in ft	FROM	TO	LDA in ft
01	C	4204	Thld Rwy 19	Short of Rwy 07-25	4600
			Thld Rwy 25	Short of Rwy 01-19	8400

REF	N49 01 31 W122 21 36 2.2SW 17°E (2014) UTC-8(7) Elev 194' VTA A5004 L02 HI3 T1 CAP RCAP
OPR	City of Abbotsford 604-855-1001 1230-0830Z† Cert
PF	A-1,2,3,6,7 C-4,5
CUST	AOE/15 888-226-7277 16-08Z†
FLT PLN	Pilots are to open/close VFR Flt Pln with Kamloops FIC via phone or Pacific rdo 122.5 when practicable.
FIC	Kamloops 866-WXBRIEF (Toll free within Canada) or 866-541-4101 (Toll free within Canada & USA)
ACC	Vancouver IFR 604-586-4590/4591 or 800-668-1333; IFR tng fits, IFR maintenance fits, IFR test fits and IFR planned missed approach fits PPR ctc 604-586-4592 or 800-668-1333.
WX	METAR H24. TAF H24, issue times: 00, 06, 12, 18Z.
SERVICES	Call out chg may be levied for one or more services.
FUEL	MG-1, 100LL, JA (CON S IP JA-1, FSII) 604-854-1964 by truck, JA-1 (FSII avbl) 604-425-4380 by truck self-serve VISA & Mastercard only 778-800-0132.
OIL	All
S	1,2,3,4,5
ARFF	DESIGNATED CAT 7 1230-0830Z† O/T 2 hr PN 604-864-5544.
JASU	AC/DC 28V 400 amp min
PVT ADV	Abbotsford Shell Aerocentre 122.95 604-854-1964 or 877-270-2010; FastAir 122.875 604-425-4380
MIL CON	Carson Air 604-854-1964

BRITISH COLUMBIA

AERODROME / FACILITY DIRECTORY

ABBOTSFORD BC (Cont'd)

CYXX

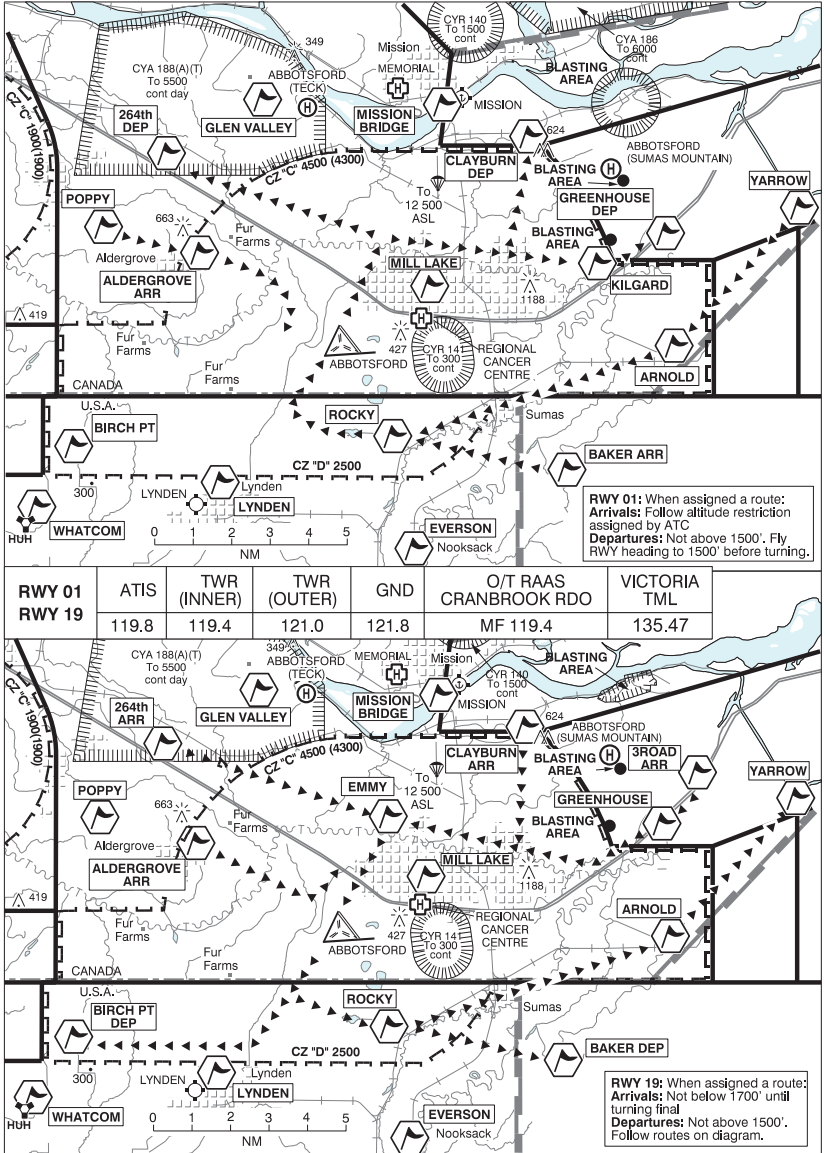
RWY DATA	Rwy 07(069°)/25(249°) 9597x200 ASPH Thld 25 disp1 295'. Rwy 01(009°)/19(189°) 5328x200 ASPH
RWY CERT	Rwy 07 RVR 1200(1/4sm)/Rwy 25 RVR 1200(1/4sm) AGN V Rwy 01/19 AGN IIIB
TWY CERT	Twy: B, G AGN II Twy D AGN IV
TWY	Twy D uncontrolled E of blast fence. Twy B rstd to acft with wingspans 78' or less. Reverse turns to exit Rwy 07 onto Twy C4 rstd to acft with wingspans 50' or less. Turns onto Twy A from Twy C rstd to acft with wingspans 171' or less. Turns from Twy A onto Twy C rstd to C-130 & smaller (blast issue). Turns west onto Twy C4 and east onto Twy C1 from Twy C rstd to acft with wingspans 133' or less. Twy G uncontrolled.
APRON	Ltd prkg and de-icing dur win ops, all wide body acft 2hr PN ctc ops 604-864-5544. Corporate itinerant prkg ctc Shell Aerocentre.
RCR	Opr Ltd win maint 1400-0730Z†, O/T 2 hrs PN call out chg. PPR dur win maint exc sked ops, altn or emerg. CRFI, PCN.
LIGHTING	01-AS(TE ME) P2, 19-AS(TE ME) P2, 07-AN(TE HI), 25-AO(TE HI) P3
COMM	
RCO	Cranbrook rdo 119.4 (RAAS) 07-15Z† Pacific rdo 122.5 (FISE) 126.7 (bcst)
ATIS	119.8 15-07Z†
GND	121.8 15-07Z†
TWR	119.4 (inner) 121.0 (outer) 295.0 (V) 15-07Z† (emerg only 604-855-1199)
MF	MF and advsy svcs only provided over Canadian territory. Cranbrook rdo 119.4 295.0 07-15Z† CZ shape irregular 4500 ASL (CAR 602.98) (emerg only 250-426-6312)
TML	Victoria 135.47
ARR	Victoria Tml 132.7 (avail on gnd)
DEP	Victoria Tml 132.7 (avail on gnd)
NAV	
DME	YAI 116.1 Ch 108 N49 01 04 W122 22 34 (200')
ILS	IXX 109.7 (Rwy 07) RVR

ABBOTSFORD BC (Cont'd)

CYXX

PRO	<p>Rgt hand circuit Rwy 07 & 01 (CAR 602.96). Rwy 01/19, Twy B, C, C1 and C4 not avbl for acft taxiing when visibility below 1/2sm (CAR 602.96)</p> <p>NIGHT RESTRICTIONS: Turbo-jet, turbo-fan and turbo-prop tng not permitted fr 06-15Z±. All other night tng as authorized by the APM.</p> <p>Procedures for crossing the southern Strait of Georgia within Tml Class C airspace refer to Vancouver Intl, VTPC for Crossing the Southern Strait of Georgia.</p> <p>Pilots should refer to Canadian Airport Charts (CAC) to obtain details on established hot spots, prior to operating on maneuvering areas. CAC are available for free on the NAV CANADA website.</p> <p>ATS REQUIREMENTS:</p> <p>All VFR acft arriving, departing or transiting the Vancouver or Victoria Tower Class C or D airspace require a transponder code.</p> <ul style="list-style-type: none"> - All acft departing Vancouver or Victoria Intl (including Water Aerodrome) call Kamloops FIC at 866-541-4101 or PAC RDO 122.5 for code assignment at least 30 min prior to flight or file a VFR Flight Plan/Flight Itinerary. - All acft arriving Vancouver Intl (including Water Aerodrome) or transiting Vancouver or Victoria Control Zones obtain a code from one of the following ATS units: Vancouver Harbour, Nanaimo, Victoria Harbour, Boundary Bay, Langley, Abbotsford or Pitt Meadows, or call Kamloops FIC at 866-541-4101 or PAC RDO 122.5. - All acft arriving Victoria Intl from a non NAV CANADA site call Kamloops FIC at 866-541-4101 or PAC RDO 122.5 for code assignment at least 30 minutes prior to flight or file a VFR Flight Plan/ Flight Itinerary. <p>VFR ARR/DEP ROUTES:</p> <p>See VTPC</p>
HELI	<p>When assigned, follow heli routes as depicted on the Heli VTPC.</p> <ul style="list-style-type: none"> - EAST, MCCALLUM and MARSHALL Routes: not above 700 ASL between airport and McCallum Rd. - MCCALLUM Route: Follow Marshall Rd. for East/West portion. *Do not follow HWY1. - MARSHALL Route: follow Marshall Rd. to FUNPARK then direct GREENHOUSE (reverse for inbound). <p>Dep/Arr S & SW as cleared by ATC.</p> <p>Heli tng areas day use only.</p> <p>Infield heli training area remain at least 200' from all rwys and twys.</p> <p>Infield circuit remain at least 400' from all rwys and north of Twy C, 700 ASL & below, ctc ATC for heli circuit procedures or refer to VTPC Infield Circuit diagram.</p>
CAUTION	<p>Numerous obsts in heli tng areas. Parachute area aprx 5NM NNE of aprt. Tall vehicles on road S Thld 01; Ngt ops must use PAPI.</p>

ABBOTSFORD VFR TERMINAL PROCEDURES CHART RWY 01 & 19



ABBOTSFORD VFR TERMINAL PROCEDURES CHART RWY 01 & 19 (Cont'd)

NAME	IDENT	LAT/LONG
264th	VCXYZ	N49° 06' 06" W122° 29' 36"
3ROAD	VCTRD	N49° 05' 23" W122° 07' 29"
ALDERGROVE	VCGRV	N49° 03' 30" W122° 28' 12"
ARNOLD	VCARN	N49° 01' 00" W122° 09' 00"
BAKER	VCBKR	N48° 57' 42" W122° 13' 24"
BIRCH POINT	VCBPT	N48° 56' 36" W122° 49' 06"
CLAYBURN	VCCYB	N49° 06' 36" W122° 14' 54"
EMMY	VCEMY	N49° 04' 12" W122° 20' 26"
EVERSON	VCEVR	N48° 55' 48" W122° 19' 24"
GLEN VALLEY	VCGLN	N49° 07' 36" W122° 25' 42"
GREENHOUSE	VCGRE	N49° 04' 00" W122° 09' 18"
KILGARD	VCKLH	N49° 03' 12" W122° 12' 06"
LYNDEN	VCLDN	N48° 57' 24" W122° 27' 24"
MILL LAKE	VCMLK	N49° 02' 36" W122° 18' 54"
MISSION BRIDGE	VCMSB	N49° 07' 24" W122° 18' 24"
POPPY	VCPPY	N49° 04' 12" W122° 32' 12"
ROCKY	VCRKY	N48° 58' 36" W122° 20' 24"
WHATCOM	VCWCM	N48° 56' 43" W122° 34' 45"
YARROW	VCYAR	N49° 04' 50" W122° 03' 53"

ARRIVALS

Obtain ATIS on 119.8 – contact tower on 121.0 when advertised.

RWY 01 - No altitude restriction unless assigned by ATC

ALDERGROVE - Fly direct the airport, join left downwind RWY 01.

BAKER - Fly direct ROCKY. Join right base RWY 01.

YARROW - Fly direct ARNOLD, then ROCKY. Join right base RWY 01.

RWY 19 – All Arrival Routes: Not Below 1700 until turning final.

3ROAD - Fly to GREENHOUSE, follow powerlines westbound. Turn final at EMMY.

Caution: Terrain at KILGARD.

CLAYBURN - Fly southbound to powerlines. Follow powerlines westbound. Turn final at EMMY.

264th - Fly direct EMMY, then turn final. *Do not follow HWY1.

ALDERGROVE - Fly direct airport. Join mid-right downwind RWY 19.

DEPARTURES

All Routes: Not Above 1500 until cleared higher.

RWY 01:

264th - Fly RWY heading to 1500, then turn direct 264th.

CLAYBURN - Fly RWY heading to 1500, then turn eastbound to the Mission Hwy, then direct CLAYBURN.

GREENHOUSE - Fly RWY heading to 1500, then turn direct KILGARD, then GREENHOUSE.

RWY 19:

BIRCH PT - Fly RWY heading until South of US Border. Then direct BIRCH PT.

BAKER - Fly RWY heading until South of US Border. Then direct BAKER.

YARROW - Fly RWY heading until South of US Border, then direct ROCKY, ARNOLD then YARROW.

ABBOTSFORD VFR TERMINAL PROCEDURES CHART RWY 01 & 19 (Cont'd)

OBTAINING A TRANSPONDER CODE:

All VFR aircraft arriving/departing/overflying Abbotsford Class C or D airspace require a transponder code. Recommended methods of obtaining transponder code:

- Filing a VFR flight plan
- Contacting Kamloops FIC at 1-866-541-4101
- Contacting Pacific Radio on frequency 122.5 or 126.7
- Via text message through the NAV CANADA Transponder Code Retrieval (TCR) system.

Medium and High-performance aircraft call YXX Tower in advance of requesting VFR training in the area.