
FLIGHT PLAN & SITE SURVEY

H 168-4153 RADIO CONTROL FLYING CLUB OF B.C.- 30302
COOPER AVE. MISSION, BC V4S 1J5

April 29, 2026



IMPORTANT NOTICE

Please ensure you have received all required authorizations prior to flight. This Site Survey was created using RPAS Wilco. The user accepts all responsibility for the accuracy of the information.

Terms & Conditions: rpswilco.com/#tnc

Mission Information

H 168-4153 RADIO CONTROL FLYING CLUB OF B.C.- 30302 COOPER AVE. MISSION, BC V4S 1J5

FLIGHT DETAILS

Reference No:	MAAC-168-4153
Project Name:	RADIO CONTROL FLYING CLUB OF B.C.
Pilot Name:	MAAC
Pilot Certificate:	
Mission Type:	VLOS
Flight Start:	April 29, 2026 03:26 PM
Flight End:	April 29, 2026 04:26 PM

LOCATION DETAILS

Flight Address:	30302 COOPER AVE. MISSION, BC V4S 1J5
Latitude:	49° 8' 48.80" N (49.147)
Longitude:	122° 23' 6.40" W (-122.385)
Altitude / Radius:	400 ft / 926.0 m (0.5 nm)
Classification:	ADVISORY
FIR / Contact:	CZVR / 604-586-4500

NOTES

Your flight is in an advisory airspace.
Please check whether the area is active via NOTAMs or by contacting the controlling agency found in the DAH.





REPORT CONTENTS

Site Survey • Obstacles (if available) • Nearby Aerodromes • Canadian Aviation Regulations • GFA • Aerodrome Supplements • METAR & TAF • NOTAMs • CFS

Flight Map & MODEL Details

MISSION LOCATION SURVEY

MISSION LOCATION DETAILS

ROLE	LATITUDE	LONGITUDE
 MODEL	49° 8' 48.80" N 49.147	122° 23' 6.40" W -122.385
 Pilot		
 Payload Op.		
 Observer		

Airspace Classification

MISSION LOCATION SURVEY

AIRSPACE MAP



OVERLYING AIRSPACES

Class	Name	Floor	Ceiling
C	Vancouver, BC s) [TCA]	6500MSL	8500MSL
C	Vancouver, BC t) [TCA]	8500MSL	9500MSL
C	Vancouver, BC u) [TCA]	9500MSL	12500MSL
B	Vancouver, BC v) [TCA]	12500MSL	18000MSL
E	T629 Fixed RNAV Route	2200AGL	18000MSL
E	Pitt Meadows, BC b) [CAE]	2000MSL	18000MSL
F	CYA188 (A,T) GLEN VALLEY, BC	SFC	5500MSL
C	Vancouver, BC l) [TCA]	4500MSL	6500MSL
E	V342-1 VHF/UHF Airway	2200AGL	18000MSL
E	T800 Fixed RNAV Route	2200AGL	18000MSL

NEAREST AERODROMES & DISTANCE FROM OPERATION

ABBOTSFORD (TECK) (CTK8 - HELIPORT - Reg)	Lat: 49.127	Long: -122.395	2.326KM	1.26NM	S
FORT LANGLEY (CAS4 - WATERDROME - Reg)	Lat: 49.167	Long: -122.533	10.985KM	5.93NM	W
FORT LANGLEY (CBQ2 - AERODROME - Reg)	Lat: 49.168	Long: -122.557	12.718KM	6.87NM	W

BRITISH COLUMBIA

AERODROME / FACILITY DIRECTORY

ABBOTSFORD (TECK) BC (Heli)

CTK8

REF	N49 07 37 W122 23 41 6NW 17°E (2014) UTC-8(7) Elev 165' VTA A5004	
OPR	Tecklenair Aviation Ltd 604-328-7553 Reg PPR	
PF	A-1 D-2,3,4,5,6	
FLT PLN		
FIC	Kamloops 866-WXBRIEF (Toll free within Canada) or 866-541-4101 (Toll free within Canada & USA)	
SERVICES		
S	4	
HELI DATA	FATO 35' x 35' GRASS TLOF 15' x 15' GRASS Safety Area 100' x 100'	
RCR	Opr 16-01Z†	
COMM		
ATF	tfc 122.725 0.5NM 1000 ASL	
PRO	Arr/dep 305° & 203° fr heli day only. Within CYA 181 CFA 122.725, see VTA and VTPC.	
CAUTION	Extv tfc E and W over the Fraser River and Mission, CYXX CZ 1.5NM SE, see VTPC.	

CANADA WATER AERODROME SUPPLEMENT

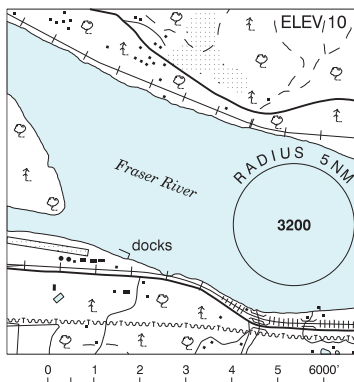
Effective 0901Z 19 March 2026 to 0901Z 18 February 2027

AERODROME/FACILITY DIRECTORY B59

FORT LANGLEY BC

CAS4

REF	N49 10 W122 32 17°E (2013) UTC-8(7) Elev 10' VTA A5004
OPR	Fort Langley Avn 604-888-1922 Reg PPR
PF	A-1 C-2,3,4,5 D-6
FLT PLN	FIC Kamloops 866-WXBRIEF (Toll free within Canada) or 866-541-4101 (Toll free within Canada & USA)
SERVICES	
FUEL	100LL, JA
S	1,4,5
A/D DATA	Current 3-5 kt, sand beach & ramp.
COMM	
ATF	tfc 122.725 2NM 1500 ASL
NAV	
VOR	PITT MEADOWS YPK 112.4 N49 12 57 W122 42 54 (44')
PRO	Circuits 1000' over river. Follow the southside of the chan for eastbound water ldg. No water circuits or floatplane tng in vic of MacMillan Island.

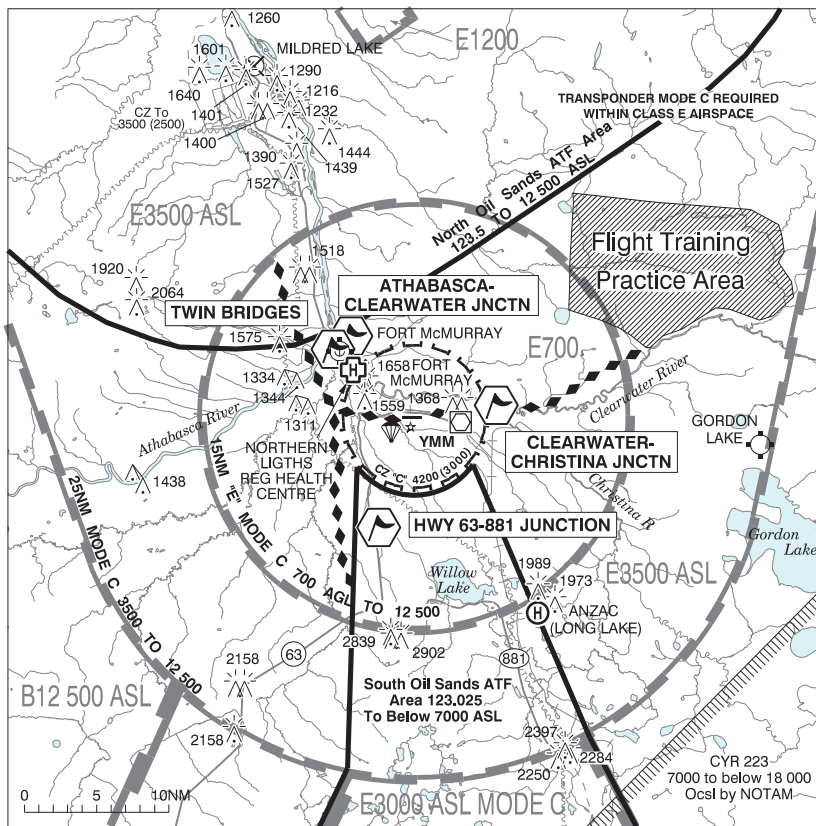


CANADA WATER AERODROME SUPPLEMENT

Effective 0901Z 19 March 2026 to 0901Z 18 February 2027

B60 AERODROME/FACILITY DIRECTORY

FORT McMURRAY VFR TERMINAL PROCEDURES CHART



NAME	IDENT	LAT/LONG
ATHABASCA - CLEARWATER JUNCTION	VCABA	N56° 44' 00" W111° 23' 12"
CLEARWATER - CHRISTINA JUNCTION	VCCLW	N56° 39' 54" W111° 03' 06"
HWY 63 - 881 JUNCTION	VCJCT	N56° 31' 30" W111° 18' 06"
TWIN BRIDGES	VCTWB	N56° 43' 54" W111° 23' 36"

BRITISH COLUMBIA

AERODROME / FACILITY DIRECTORY

FORT LANGLEY BC

CBQ2

REF	N49 10 04 W122 33 27 Adj 17°E (2014) UTC-8(7) Elev 33' VTA A5004	
OPR	Fort Langley Avn 604-888-1922 PPR Reg	
PF	A-1 C-2,3,4,5 D-6	
FLT PLN	FIC Kamloops 866-WXBRIEF (Toll free within Canada) or 866-541-4101 (Toll free within Canada & USA)	
SERVICES	FUEL 100LL, JA S 1,4,5	
RWY DATA	Rwy 08(082°)/26(262°) 5510X60 ASPH	
RCR	Opr 604-888-1922 Ltd win maint	
COMM		
ATF	tfc 122.725 2NM 1500 ASL	
NAV		
VOR	PITT MEADOWS YPK 112.4 N49 12 57 W122 42 54 (44')	
PRO	Rgt hand circuits Rwy 26 (CAR 602.96). Circuit hgt 1000 ASL. No training flights. No overflight of Fort Langley community & MacMillan Island below 1000 ASL. Procedures for crossing the southern Strait of Georgia within Tml Class C airspace refer to Vancouver Intl, VTPC for Crossing the Southern Strait of Georgia.	
CAUTION	Trees to 80 AGL along N side	