
FLIGHT PLAN & SITE SURVEY

H 792-5550 RENEGADE FLYERS- COLEBROOK ROAD
FIELD

April 29, 2026



IMPORTANT NOTICE

Please ensure you have received all required authorizations prior to flight. This Site Survey was created using RPAS Wilco. The user accepts all responsibility for the accuracy of the information.

Terms & Conditions: rpswilco.com/#tnc

Mission Information

H 792-5550 RENEGADE FLYERS- COLEBROOK ROAD FIELD

FLIGHT DETAILS

Reference No:	MAAC-792-5550
Project Name:	RENEGADE FLYERS
Pilot Name:	MAAC
Pilot Certificate:	
Mission Type:	VLOS
Flight Start:	April 29, 2026 04:41 PM
Flight End:	April 29, 2026 05:41 PM

LOCATION DETAILS

Flight Address:	COLEBROOK ROAD FIELD
Latitude:	49° 5' 43.51" N (49.095)
Longitude:	122° 51' 35.94" W (-122.86)
Altitude / Radius:	400 ft / 926.0 m (0.5 nm)
Classification:	UNCONTROLLED
FIR / Contact:	CZVR / 604-586-4500





REPORT CONTENTS

Site Survey • Obstacles (if available) • Nearby Aerodromes • Canadian Aviation Regulations • GFA • Aerodrome Supplements • METAR & TAF • NOTAMs • CFS

Flight Map & MODEL Details

MISSION LOCATION SURVEY

MISSION LOCATION DETAILS

ROLE	LATITUDE	LONGITUDE
 MODEL	49° 5' 43.51" N 49.095	122° 51' 35.94" W -122.86
 Pilot		
 Payload Op.		
 Observer		

Airspace Classification

MISSION LOCATION SURVEY

AIRSPACE MAP



OVERLYING AIRSPACES

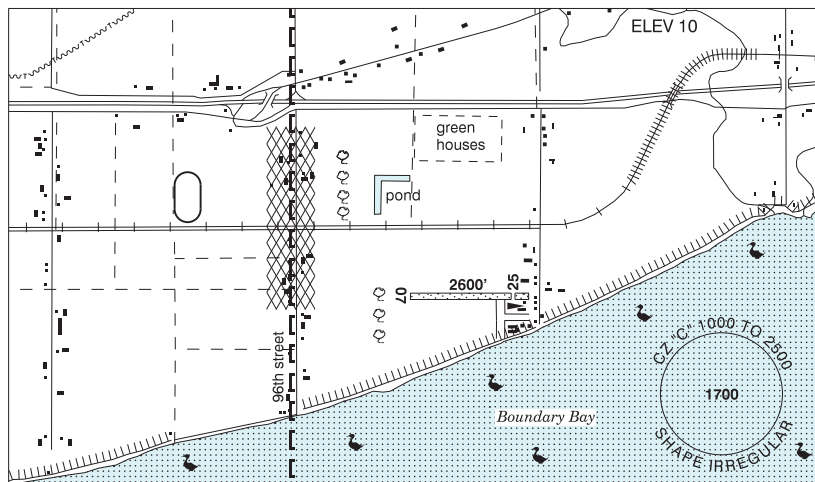
Class	Name	Floor	Ceiling
C	Vancouver, BC l) [TCA]	4500MSL	6500MSL
C	Vancouver, BC s) [TCA]	6500MSL	8500MSL
C	Vancouver, BC t) [TCA]	8500MSL	9500MSL
C	Vancouver, BC u) [TCA]	9500MSL	12500MSL
B	Vancouver, BC v) [TCA]	12500MSL	18000MSL
E	T800 Fixed RNAV Route	2200AGL	18000MSL
C	Vancouver, BC d) [TCA]	2500MSL	4500MSL
E	V342-1 VHF/UHF Airway	2200AGL	18000MSL
E	T775 Fixed RNAV Route	2200AGL	18000MSL
E	Pitt Meadows, BC a) [CAE]	1500MSL	18000MSL
C	Boundary Bay, BC b) [CZ]	1000MSL	2500MSL

NEAREST AERODROMES & DISTANCE FROM OPERATION

DELTA HERITAGE AIR PARK (CAK3 - AERODROME - Reg)	Lat: 49.079	Long: -122.938	5.968KM	3.22NM	W
SURREY MEMORIAL HOSPITAL (CVS3 - HELIPORT - Cert)	Lat: 49.176	Long: -122.844	9.035KM	4.88NM	N
BOUNDARY BAY (CZBB - AERODROME/HELIPORT - Cert)	Lat: 49.073	Long: -123.008	11.064KM	5.97NM	W

DELTA / DELTA HERITAGE AIR PARK BC

CAK3



REF	N49 04 43 W122 56 17 4.5E 17°E (2013) UTC-8(7) Elev 10' VTA A5004
OPR	Recreational Aircraft Association, Chap 85 (DapCom) 604-543-8894, Caretaker 604-722-3791 Reg PPR by phone 604-878-9050
PF	B-1 C-2,3,6 D-4,5
FLT PLN	FIC Kamloops 866-WXBRIEF (Toll free within Canada) or 866-541-4101 (Toll free within Canada & USA)
SERVICES	FUEL 100LL S 4,5
RWY DATA	Rwy 07/25 2600x75 GRASS Thld 25 displ 300'
RCR	Opr No win maint. Rwy soft when wet
COMM	ATIS Boundary Bay 125.5 15-07Z† ATF tfc 123.3 2NM below 1000 ASL Excluding that portion which penetrates Boundary Bay class "C" airspace.

DELTA / DELTA HERITAGE AIR PARK BC (Cont'd)

CAK3

PRO

HELI
NOISE

Heli tng not auth.

Circuit alt 600 ASL. Rgt hand circuits Rwy 25 (CAR 602.96).

NOISE ABATEMENT PROCEDURES:

Departures:

Rwy 25 Dep: When safe hdg 280°, then further right turn to crosswind to avoid noise sensitive area.

Downwind dep auth fr Rwy 25 at 600 ASL. No southbound dep until clear of circuit to E. Avoid flt over dike and adj water area below 600 ASL.

Arrivals:

All arr to air park fr seaside. Cross midfield at 600 ASL and join downwind (CAR 602.96).

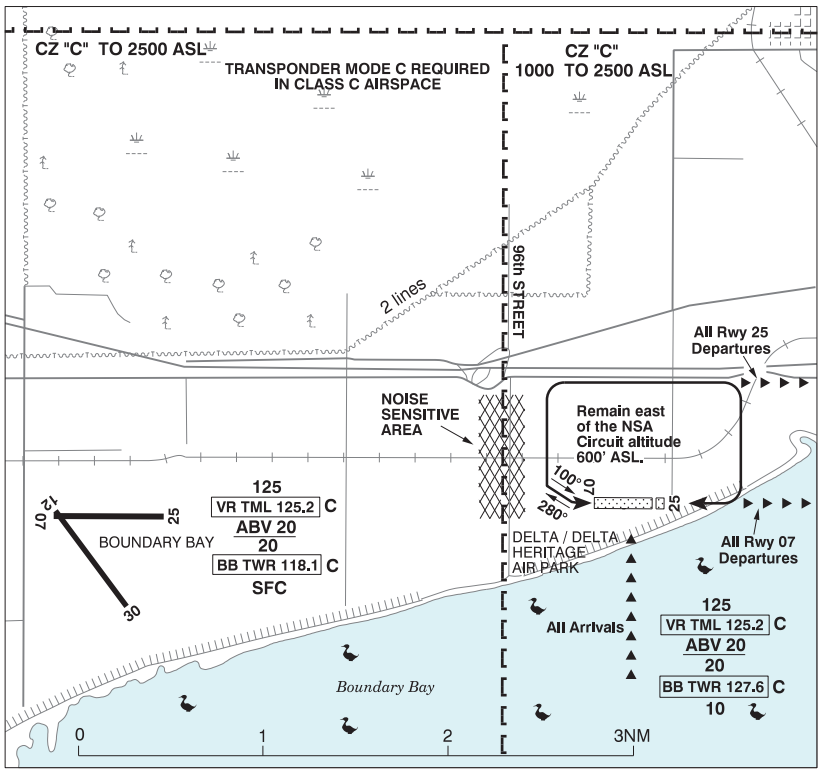
Rwy 07 Arr: Fr downwind, turn on base leg well bfr 96th Street to avoid noise-sensitive area. When S of railway tracks hdg 100° to intercept final apch E of row of trees.

Boundary Bay A/D 2.5NM W, obtain clnc prior to entering Boundary Bay CZ. Refer to VTPC. Procedures for crossing the Southern Strait of Georgia within Tml Class C airspace refer to Vancouver Intl VTPC FOR CROSSING THE SOUTHERN STRAIT OF GEORGIA ABOVE 2500FT.

CAUTION

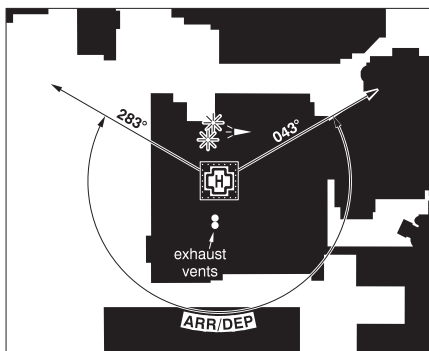
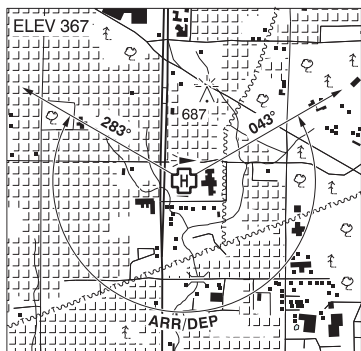
Extremely confined circuit. Trees 750' fr thld Rwy 07, trees and obst adj to thld Rwy 25. Acft unable to accommodate noise abatement procedures and obst avoidance should avoid the air park. Beware of Boundary Bay A/D tfc close to Delta Heritage Air Park.

DELTA / DELTA HERITAGE AIR PARK VFR TERMINAL PROCEDURES CHART



VANCOUVER (SURREY MEMORIAL HOSP) BC (Heli)

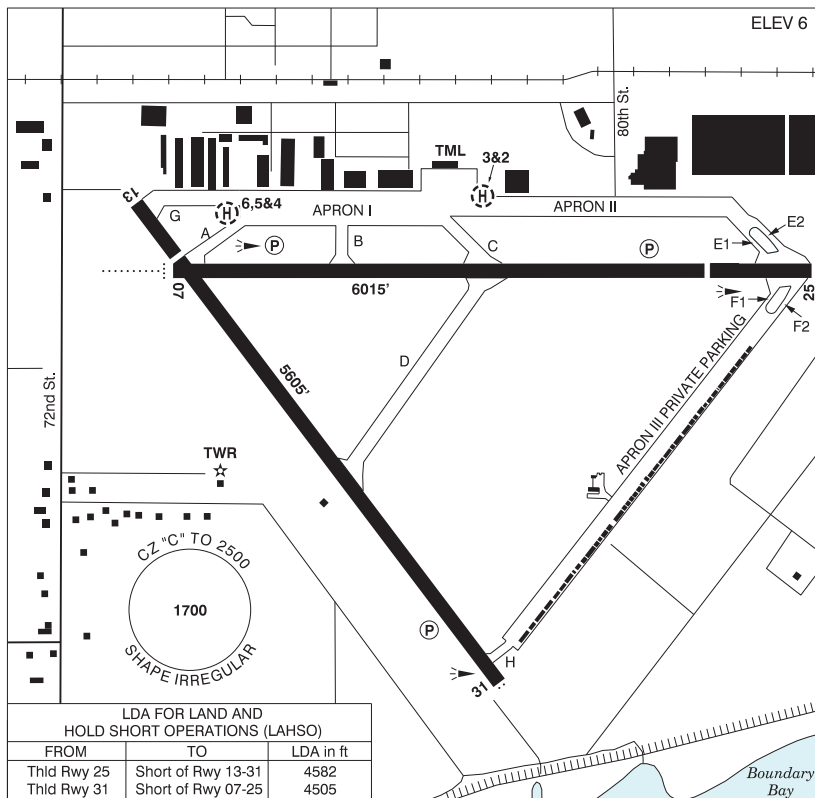
CVS3



REF	N49 10 33 W122 50 38 Adj 17°E (2014) UTC-8(7) Elev 367' VTA A5004
OPR	Fraser Health Authority 604-677-3672 Cert PPR
PF	B-1,2,3,4 C-5,6
FLT PLN	
FIC	Kamloops 866-WXBRIEF (Toll free within Canada) or 866-541-4101 (Toll free within Canada & USA)
HELI DATA	FATO 86' x 86' non-supporting TLOF 57' x 57' CONC Safety Area 115' x 115' Max heli overall length 57.4' Elevated rooftop 14,690 lbs
RCR	Opr
LIGHTING	RY(LO) green PN
COMM	
ATF	tfc 123.2 1.5NM 1500 ASL
A/G	Hosp Security 158.76 FM 3 min PN
PRO	Arr/dep 043° to 283° fr heli (H1), (CAR 602.96).
CAUTION	High velocity hosp exhaust vents adj, S heli. Elevator penthouse adj, N heli. LED obst lgt not vis through NVG.

VANCOUVER / BOUNDARY BAY BC

CZBB



REF	N49 04 24 W123 00 30 8.5SSE 17°E (2011) UTC-8(7) Elev 6' VTA A5004 LO2 HI3 T1 CAP
OPR	Alpha Aviation Inc. 604-946-5361 Cert PPR (see PRO)
PF	A-1,2,3,6 C-4,5
CUST	AOE/15 888-226-7277 15-06Z‡
FLT PLN	
FIC	Kamloops 866-WXBRIEF (Toll free within Canada) or 866-541-4101 (Toll free within Canada & USA)
ACC	Vancouver IFR 604-586-4590/4591; IFR tng flts PPR ctc 604-586-4592
WX	LWIS H24 LAWO 15-07Z‡
SERVICES	
FUEL	100LL (truck or H24 cardlock), JA-1
OIL	All
S	1,2,3,4,5,6
PVT ADV	Boundary Bay Air Services 122.95 or 866-946-2922 15-02Z‡ O/T call out chg

BRITISH COLUMBIA

AERODROME / FACILITY DIRECTORY

VANCOUVER / BOUNDARY BAY BC (Cont'd)

CZBB

RWY DATA	Rwy 07(073°)/25(253°) 6015x100 ASPH Thld 25 displ 1006' Rwy 13(126°)/31(306°) 5605x100 ASPH Thld 13 displ 656'
RWY CERT	Rwy 07/25 AGN IIIB Rwy 13/31 AGN IIIB
TWY CERT	Twy B AGN II
TWY	Twy E1, E2, F1, F2: Simultaneous use of E1 and E2 taxiways restricted to a wing-span of 32 m (105 ft). Discretionary oversteer required for intersections of Twy E1, E2, F1, F2. Outer main gear wheel span 6m (20 ft) up to but not including 9m (30 ft).
APRON	Apron 3 pvt prkg only. No itinerant acft.
RCR	Opr CRFI/RSC avbl 15-04Z‡ No win maint btwn 04-15Z‡
HELI DATA	Parking Pads 2 & 3: 68' dia CONC Max heli overall length 57' Parking Pads 4 & 6: 60' dia CONC Max heli overall length 50' Parking Pad 5: 65' dia CONC Max heli overall length 54' Parking Pads 2 & 3 day use tkof/ldg, hover, taxi & prkg. Ngt use prkg only (CAR 602.96).
LIGHTING	07-AD (non-std 1400') (TE ME) P2, 25-(TE ME) P2 3.5°, 13-(TE ME), 31-AS(TE ME) P2 When TWR clsd ARCAL-118.1 type K.
COMM	
ATIS	125.5 15-07Z‡
GND	124.3 15-07Z‡
TWR	118.1 (inner) 127.6 (outer) (V) to 2000 ASL 15-07Z‡ (emerg only 604-946-0911) Vancouver TML 125.2 abv 2000 ASL
MF	‡fc 118.1 to 2000 ASL 07-15Z‡ Vancouver TML 125.2 abv 2000 ASL. CZ shape irregular to 2500 ASL. (CAR 602.98) Excluding that portion which penetrates Delta Heritage Air Park ATF dur daylight hrs.
NAV	
VOR/DME	VANCOUVER YVR 115.9 Ch 106 N49 04 38 W123 08 57 (37')
PRO	VFR acft with transponder squawk code assigned by ATC. All circuits 800 AGL. Rgt hand circuits Rwy 25 & 31 (CAR 602.96). Rwy 13/31 preferred for ngt ops. Pilots to open/close Flt Plns with Kamloops FIC via phone or Kamloops FIC 123.15 when practicable. Procedures for crossing the southern Strait of Georgia within Tml Class C airspace refer to Vancouver Intl VTPC. No circuits Rwy 07/25 23-07 lcl. Avoid over-flying noise sensitive area unless unable due to crosswind limitations or other safety considerations or as directed by ATC. Arr/Dep: No turns BLW 400'. After dep Rwy 25 turn crosswind as rrd to remain E of railway tracks. Arr Rwy 07 turn base E of noise sensitive area. No departures fr taxi B. Conform to published VTA routes and as directed by ATC. PPR for Jet acft and acft over 12500 lbs GTOW. Ctc OPR for advsy info.
PRO (Cont'd)	ATS REQUIREMENTS: All VFR acft arriving, departing or transiting the Vancouver or Victoria Tower Class C or D airspace require a transponder code. - All acft departing Vancouver or Victoria Intl (including Water Aerodrome) call Kamloops FIC at 866-541-4101 or PAC RDO 123.15 or 122.375 for code assignment at least 30 min prior to flight or file a VFR Flight Plan/Flight Itinerary. - All acft arriving Vancouver, Victoria Intl (including Water Aerodrome) or transiting Vancouver or Victoria Control Zones obtain a code from one of the following ATS units: Vancouver Harbour, Nanaimo, Victoria Harbour, Boundary Bay, Langley, Abbotsford or Pitt Meadows, or call Kamloops FIC at 866-541-4101 or PAC RDO 123.15 or 122.375. - All acft arriving Victoria Intl from a non NAV CANADA site call Kamloops FIC at 866-541-4101 or PAC RDO 123.15 or 122.375 for code assignment at least 30 minutes prior to flight or file a VFR Flight Plan/ Flight Itinerary.

VANCOUVER / BOUNDARY BAY BC (Cont'd)

CZBB

Delta Heritage Air Park 2.5NM E no overflights below 1000 ASL. (See VTPC).

All arriving and transiting A/C Contact TWR 127.6 on initial contact.
All Departures contact TWR 127.6 climbing through 800 ASL unless otherwise instructed.

Rwy 07 or 13:

Arrivals fr E - report COURTHOUSE not below 1500 expect COURTHOUSE ARRIVAL left downwind Rwy 07 or left base Rwy 13.
Arrivals fr S or W - report WEST POINT expect WEST POINT ARRIVAL rgt base Rwy 07 or rgt downwind Rwy 13.
Departures to E - expect AUTOMALL DEPARTURE.
Departures to W or S - expect POINT ROBERTS DEPARTURE.

Rwy 25 or 31:

Arrivals fr E - report AUTOMALL expect AUTOMALL ARRIVAL straight in Rwy 25 or rgt base Rwy 31.
Arrivals fr S - report POINT ROBERTS expect POINT ROBERTS ARRIVAL left downwind to Rwy 25 or Left base Rwy 31.
Departures to E - expect COURTHOUSE DEPARTURE or FRASER BRIDGE DEPARTURE.
Departures to the W or S - expect WEST POINT DEPARTURE.

HELI

All heli ctc gnd for departure instructions.
GAS STATION DEPARTURE Track eastbound over Hwy 99. Not above 500 ASL til GAS STATION. Transmit intentions to Delta Air Park tfc on 123.3 prior to GAS STATION if BLW 1000 ASL. Ctc ZBB TWR on 127.6 after passing AK3 if climbing to 1000 ASL or abv.
LANDFILL ARRIVAL Report approaching HWY 91 track 1 NM North of Hwy 99 to LANDFILL. Transmit intentions to Delta Air Park tfc on 123.3 prior to crossing Hwy 91. Overfly LANDFILL 500 ASL or below. Cross Hwy 99 abm LANDFILL to apron.

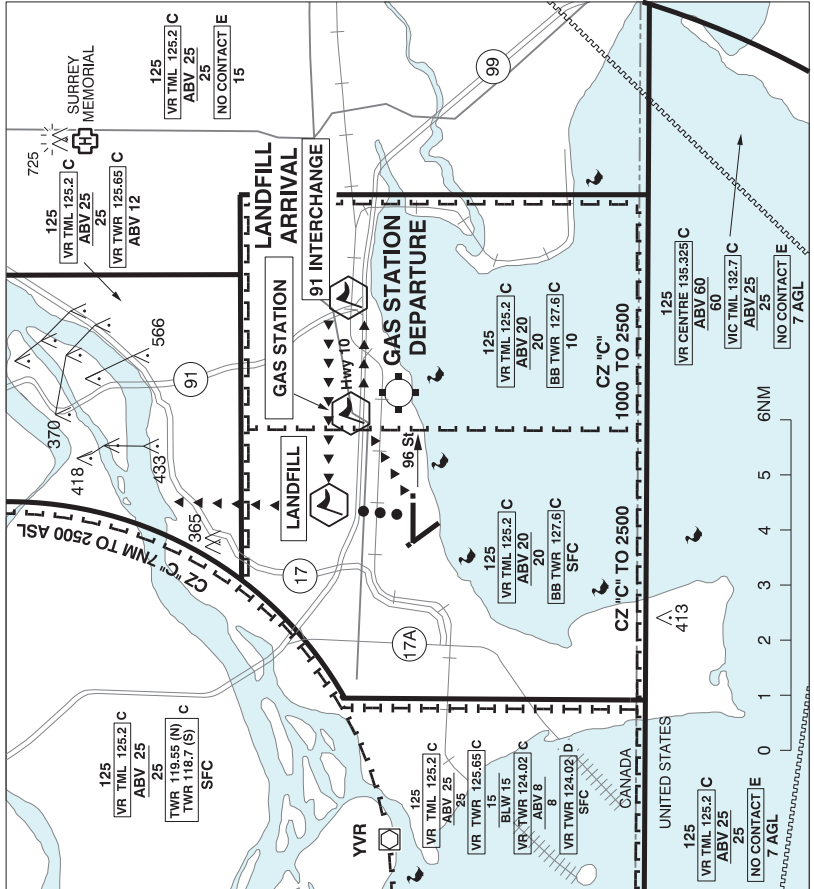
ARR/DEP N or NW will be routed via LANDFILL. Cross LANDFILL 500 ASL or BLW. Heli in excess of 58' overall length PPR.

Heli ops prohibited within 30' vertical & 90' horizontal fr all refueling eqpt.

CAUTION

Extensive bird activity. High density tfc area E of CZ. Extensive flt tng ops.

VANCOUVER / BOUNDARY BAY HELI VFR TERMINAL PROCEDURES CHARTS



VANCOUVER / BOUNDARY BAY HELICOPTER ARR/DEP

ATIS	TWR		GND
	OUTER	INNER	
125.5	127.6	118.1	124.3
VR TML ABV 2000 ASL 125.2			
O/T TFC 118.1 (MF TO 2000 CZ IRREGULAR)			

PROCEDURE NOT AUTH OUTSIDE TWR HRS OF OPS AND CAR PART 7 OPS AT NIGHT.

LANDFILL ARR

Report TWR approaching **91 INTERCHANGE** from East. Track 1 NM North of HWY 99 to **LANDFILL**. Overfly **LANDFILL 500'** or below. Cross HWY 99 abeam midfield. Broadcast intentions on Delta Air Park 123.3 prior to **91 INTERCHANGE** if below **1000'**.

GAS STATION DEP

Track Eastbound over **HWY 99**. Not above **500'** until **GAS STATION**. Broadcast intentions on Delta Air Park 123.3 prior to **GAS STATION** if below **1000'**.

ARR/DEP to the North or Northwest will be routed via **LANDFILL**. Cross **LANDFILL 500'** or below.

BRITISH COLUMBIA

AERODROME / FACILITY DIRECTORY

VANCOUVER / BOUNDARY BAY HELI VFR TERMINAL PROCEDURES CHARTS

NAME	IDENT	LAT/LONG
91 INTERCHANGE	VCBBB	N49° 05' 29" W122° 53' 45"
GAS STATION	VCGAS	N49° 05' 30" W122° 57' 24"
LANDFILL	VCLFL	N49° 06' 06" W123° 00' 24"