
FLIGHT PLAN & SITE SURVEY

K 910-5512 MACKLIN RC FLYING CLUB- MACKLIN AIRPORT

April 29, 2026



IMPORTANT NOTICE

Please ensure you have received all required authorizations prior to flight. This Site Survey was created using RPAS Wilco. The user accepts all responsibility for the accuracy of the information.

Terms & Conditions: rpaswilco.com/#tnc

Mission Information

K 910-5512 MACKLIN RC FLYING CLUB- MACKLIN AIRPORT

FLIGHT DETAILS

Reference No:	MAAC-910-5512
Project Name:	MACKLIN RC FLYING CLUB
Pilot Name:	MAAC
Pilot Certificate:	
Mission Type:	VLOS
Flight Start:	April 29, 2026 05:46 PM
Flight End:	April 29, 2026 06:46 PM

LOCATION DETAILS

Flight Address:	MACKLIN AIRPORT
Latitude:	52° 20' 44.60" N (52.346)
Longitude:	109° 55' 30.08" W (-109.925)
Altitude / Radius:	400 ft / 926.0 m (0.5 nm)
Classification:	UNCONTROLLED
FIR / Contact:	CZWG / 204-983-8338





REPORT CONTENTS

Site Survey • Obstacles (if available) • Nearby Aerodromes • Canadian Aviation Regulations • GFA • Aerodrome Supplements • METAR & TAF • NOTAMs • CFS

Flight Map & MODEL Details

MISSION LOCATION SURVEY

MISSION LOCATION DETAILS

ROLE	LATITUDE	LONGITUDE
 MODEL	52° 20' 44.60" N 52.346	109° 55' 30.08" W -109.925
 Pilot		
 Payload Op.		
 Observer		

Airspace Classification

MISSION LOCATION SURVEY

AIRSPACE MAP



OVERLYING AIRSPACES

No Airspace Info Available

NEAREST AERODROMES & DISTANCE FROM OPERATION

MACKLIN (CJ8 - AERODROME - Reg)	Lat: 52.343	Long: -109.919	0.509KM	0.27NM	SE
PROVOST (CEH6 - AERODROME - Reg)	Lat: 52.337	Long: -110.278	23.999KM	12.96NM	W
LUSELAND (CJR2 - AERODROME - Reg)	Lat: 52.069	Long: -109.375	48.492KM	26.18NM	SE

SASKATCHEWAN

AERODROME / FACILITY DIRECTORY

MACKLIN SK

CJJ8

REF	N52 20 34 W109 55 08 1NE 13°E (2013) UTC-6 Elev 2280' A5015 LO2	
OPR	Rural Muni # 382 306-753-2075/7462/2744 Reg	
PF	A-1 C-2,3,4,5,6	
FLT PLN FIC	Edmonton 866-WXBRIEF (Toll free within Canada) or 866-541-4102 (Toll free within Canada & USA)	
SERVICES S	For svcg 306-753-2075/7462 4,5,6	
RWY DATA RCR	Rwy 11(110°)/29(290°) 3000x75 ASPH Lorne Kohlman or Michael Wiens 780-753-0641 306-753-7462/2744 Ltd win maint	
LIGHTING	11-(TE LO), 29-(TE LO) ARCAL-123.2 type K	
COMM ATF	tfc 123.2 5NM 5300 ASL	
CAUTION	Model acft activity Apr 1-Oct 31	

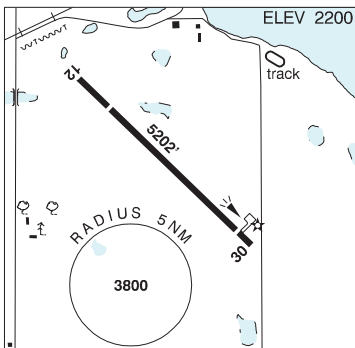
ALBERTA

AERODROME / FACILITY DIRECTORY

PROVOST AB

CEH6

REF	N52 20 15 W110 16 40 1S 13°E (2015) UTC-7(6) Elev 2200' A5015 LO2 CAP
OPR	Municipal District of Provost 780-753-2434 Reg
PF	B-1 D-2,3,4,5,6
FLT PLN	
FIC	Edmonton 866-WXBRIEF (Toll free within Canada) or 866-541-4102 (Toll free within Canada & USA)
ACC	Edmonton IFR 888-358-7526
SERVICES	
FUEL	100LL (self-serve, debit/credit cards with 4-digit PIN rqr'd)
S	4,5,6
RWY DATA	Rwy 12(121°)/30(301°) 5202x75 ASPH Rwy 30 down 0.44% Thld 12 displ 874'. Thld 30 displ 384' AGN IIIA
RCR	Opr 1530-2330Z± O/T 780-753-2168/2434 Ltd maint
LIGHTING	12-(TE ME), 30-(TE ME) ARCAL-122.8 type K
COMM	
ATF	UNICOM ltd hrs O/T tfc 122.8 5NM 5200 ASL
CAUTION	Lgtd twr 417 AGL aprx 3.5NM SW A/D.



SASKATCHEWAN

AERODROME / FACILITY DIRECTORY

LUSELAND SK

CJR2

REF	N52 04 10 W109 22 30 Adj SE 12°E (2018) UTC-6 Elev 2300' A5006 A5015 LO2 CAP	
OPR	Town 306-372-4218 Fax 306-372-4700 Reg	
PF	B-1 C-2,3,5	
FLT PLN	FIC Edmonton 866-WXBRIEF (Toll free within Canada) or 866-541-4102 (Toll free within Canada & USA)	
SERVICES	S PN, for svcg ctc opr 15-23Z Mon-Fri 4,5,6	
RWY DATA	Rwy 11(109)/29(289) 3010x75 ASPH Rwy 11 down 0.83%. AGN IIIA RCR Opr Ltd win maint	
LIGHTING	11-(TE LO), 29-(TE LO) ARCAL-123.2 type J	
COMM	ATF tfc 123.2 5NM 5300 ASL	
PRO	Rgt hand circuits Rwy 11 (CAR 602.96).	