
FLIGHT PLAN & SITE SURVEY

K 25-3883 REGINA WINDY FLYERS INC- REGINA WINDY
FLYERS

April 29, 2026



IMPORTANT NOTICE

Please ensure you have received all required authorizations prior to flight. This Site Survey was created using RPAS Wilco. The user accepts all responsibility for the accuracy of the information.

Terms & Conditions: rpaswilco.com/#tnc

Mission Information

K 25-3883 REGINA WINDY FLYERS INC- REGINA WINDY FLYERS

FLIGHT DETAILS

Reference No:	MAAC-25-3883
Project Name:	REGINA WINDY FLYERS INC
Pilot Name:	MAAC
Pilot Certificate:	
Mission Type:	VLOS
Flight Start:	April 29, 2026 04:19 PM
Flight End:	April 29, 2026 05:19 PM

LOCATION DETAILS

Flight Address:	REGINA WINDY FLYERS
Latitude:	50° 31' 2.10" N (50.517)
Longitude:	104° 28' 56.89" W (-104.482)
Altitude / Radius:	400 ft / 926.0 m (0.5 nm)
Classification:	UNCONTROLLED
FIR / Contact:	CZWG / 204-983-8338





REPORT CONTENTS

Site Survey • Obstacles (if available) • Nearby Aerodromes • Canadian Aviation Regulations • GFA • Aerodrome Supplements • METAR & TAF • NOTAMs • CFS

Flight Map & MODEL Details

MISSION LOCATION SURVEY

MISSION LOCATION DETAILS

ROLE	LATITUDE	LONGITUDE
 MODEL	50° 31' 2.10" N 50.517	104° 28' 56.89" W -104.482
 Pilot		
 Payload Op.		
 Observer		

Airspace Classification

MISSION LOCATION SURVEY

AIRSPACE MAP



OVERLYING AIRSPACES

Class	Name	Floor	Ceiling
E	Regina, SK [TA]	3000MSL	12500MSL
E	T678 Fixed RNAV Route	2200AGL	18000MSL
E	Regina, SK [CAE]	4000MSL	12500MSL
E	T706 Fixed RNAV Route	2200AGL	18000MSL
E	T797 Fixed RNAV Route	2200AGL	18000MSL
B	3.3.2-48 [CAE]	12500MSL	18000MSL

NEAREST AERODROMES & DISTANCE FROM OPERATION

AEROGATE (CAG2 - AERODROME - Reg)	Lat: 50.598	Long: -104.601	12.277KM	6.63NM	NW
REGINA GENERAL (HOSP) (CRQ2 - HELIPORT - Cert)	Lat: 50.444	Long: -104.601	11.691KM	6.31NM	SW
REGINA INTL (CYQR - AERODROME - Reg)	Lat: 50.432	Long: -104.666	16.079KM	8.68NM	SW

SASKATCHEWAN

AERODROME / FACILITY DIRECTORY

REGINA / AEROGATE SK

CAG2

REF	N50 35 52 W104 36 04 6N 10°E (2011) UTC-6 Elev 1980' A5006		
OPR	Mike Reibling 306-352-3337 14-23Z Mon-Fri O/T 306-586-8679 Reg PPR		
PF	D-1,2,3,4,5,6		
FLT PLN			
FIC	Edmonton 866-WXBRIEF (Toll free within Canada) or 866-541-4102 (Toll free within Canada & USA)		
SERVICES			
FUEL	Opr 100LL Sat-Sun only Call out charge may apply		
RWY DATA	Rwy 11(105°)/29(285°) 1900x30 broken ASPH		
RCR	Opr Ltd maint. Ltd win maint.		
COMM			
ATF	tfc 123.2 5NM 4200 ASL		
CAUTION	Twrs 2671 ASL (607 AGL) 2NM NNE of A/D and 2.9NM on apch to Rwy 29 aprx 500 AGL.		

SASKATCHEWAN

AERODROME / FACILITY DIRECTORY

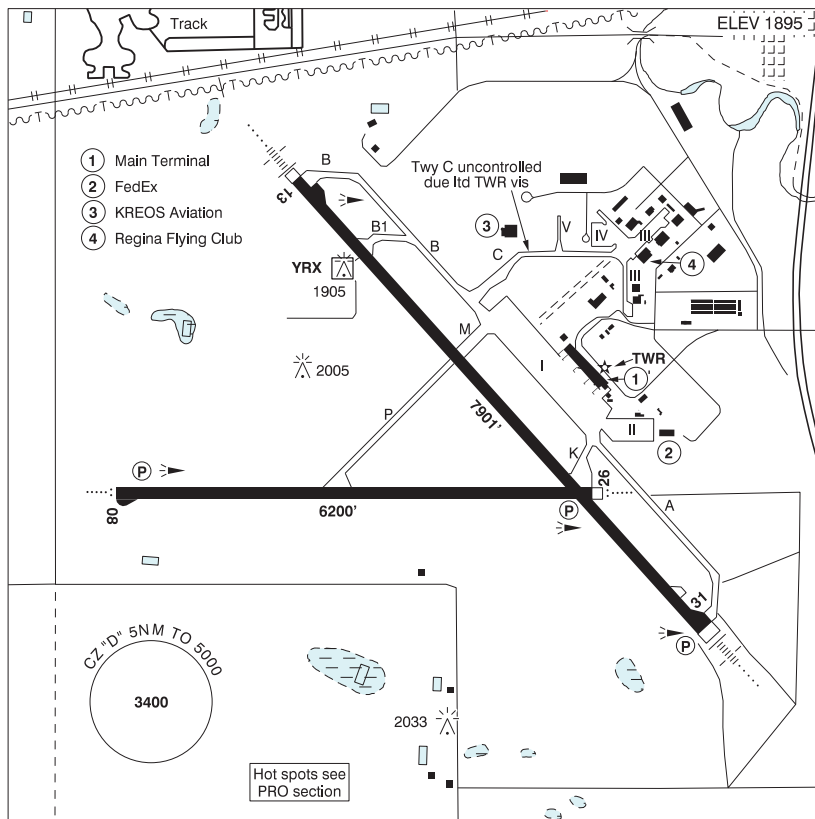
REGINA GENERAL (HOSP) SK (Heli)

CRQ2

REF	N50 26 38 W104 36 05 Adj 9°E (2014) UTC-6 Elev 1981' A5006	
OPR	Saskatchewan Health Authority Protective Services 306-766-5999 Cert PPR	
PF	A-1,2,4 C-3,5,6	
FLT PLN		
FIG	Edmonton 866-WXBRIEF (Toll free within Canada) or 866-541-4102 (Toll free within Canada & USA)	
HELI DATA	FATO 86' dia non-supporting TLOF 57' dia CONC Safety Area 115' dia 17,000 lbs Max heli overall length 57.4'	
RCR	Opr	
LIGHTING	RY(LO)	
COMM		
RADIO	118.6 04-12Z (emerg only 306-359-5018)	
RCO	Edmonton rdo 123.55 (FISE) 126.7 (bcst)	
TWR	118.6 (E) 12-04Z (emerg only 306-359-5013)	
MF	rdo 118.6 (E) 5NM centred on Regina Intl 2.6NM WSW 5000 ASL (CAR 602.98) 04-12Z	
PAL	Winnipeg Ctr 120.1 123.8	
PRO	Arr/dep 046° fr heli (H1). Arr/dep btwn 189°-141° curved path (H1). Arr/dep btwn 189°-305° fr heli (H1).	
CAUTION	Stairwell penthouse apartment 108' N of heli marked. Elevator penthouse apartment 131' S of heli marked.	

REGINA INTL SK

CYQR



REF	N50 25 56 W104 39 58 2SW 10°E (2011) UTC-6 Elev 1895' A5006 LO2 HI4 T1 CAP OC
OPR	Regina Aprt Authority (RAA) 306-761-7550 H24 Cert
PF	A-1,2,3,6,7 Tml opr 12-05Z C-4,5
CUST	AOE/200 (300 with staged off-loading) 888-226-7277 14-06Z May 3-Nov 6, H24 Nov 7-May 2
FLT PLN	<p>FIG Edmonton 866-WXBRIEF (Toll free within Canada) or 866-541-4102 (Toll free within Canada & USA)</p> <p>WX METAR H24. TAF H24, issue times: 00, 06, 12, 18Z.</p>

SASKATCHEWAN

AERODROME / FACILITY DIRECTORY

REGINA INTL SK (Cont'd)

CYQR

SERVICES	Call out chg may be levied for one or more svcs
FUEL	100LL, JA-1 (FSII avbl), SP, HPR 12-04Z
OIL	All
S	1,2,3,4,5,6
ARFF	DESIGNATED CAT 7
SUP FL	D & A-ice, LPOX
JASU	CE16, Air start
PVT ADV	KREOS Aviation 122.725 306-924-8910 12-04Z O/T 1 hr PN, call out chg. Regina Flying Club 306-525-6194 14-24Z Sep 1-May 31, 14-03Z Mon-Fri 14-24Z Sat-Sun Jun 1- Aug 31, Cardlock H24.
MIL CON	Executive Flight Centre 306-517-5223
RWY DATA	Rwy 13(128°)/31(308°) 7901x150 ASPH Rwy 08(080°)/26(260°) 6200x150 ASPH RESA: All Rwy 492'
RWY CERT	Rwy 13 RVR 1200(1/4sm)/Rwy 31 RVR 1200(1/4sm) AGN IV Rwy 08/26 AGN IV
TWY CERT	Twy C: AGN IIIB fr Twy B to Apron V & AGN II fr Apron V to Apron III
TWY	Twy C uncontrolled due ltd TWR vis. Twy C btwn Apron V and Apron III rstd to acft less than 24m (78').
APRON	Apron I rstd to sked commercial tfc only. Exceptions require prior appr of aprt opr. Apron II posn 1 rstd to commercial tfc only. Exceptions require prior appr of aprt opr. Apron III single row prkg only. Apron IV rstd to acft under 5,000 lbs.
RCR	Opr 306-761-7550 AMSCR/CFRI avbl H24 Nov 1-Mar 31, 1300-2130Z Mon-Fri exc hols Apr 1-Oct 31 O/T 2 hr PN PCN
LIGHTING	08-AO(TE HI) P2, 26-AO(TE HI) P2, 13-AN(TE HI), 31-AN(TE HI) P2
COMM	
RADIO	118.6 PTC avbl (E) 04-12Z (emerg only 306-359-5018)
RCO	Edmonton rdo 123.55 (FISE) 126.7 (bcst)
ATIS	127.0
GND	121.9 12-04Z
TWR	118.6 (E) 12-04Z (emerg only 306-359-5013)
MF	rdo 118.6 5NM 5000 ASL (CAR 602.98) 04-12Z
PAL	Winnipeg Ctr 120.1 123.8
NAV	
DME	YRX 115.0 Ch 97 N50 26 14 W104 40 15 (1916')
ILS	IQR 109.5 (Rwy 13) RVR

SASKATCHEWAN

AERODROME / FACILITY DIRECTORY

REGINA INTL SK (Cont'd)

CYQR

PRO	<p>Pilots should refer to Canadian Airport Charts (CAC) to obtain details on established hot spots, prior to operating on maneuvering areas. CAC are available for free on the NAV CANADA website.</p> <p>Rgt hand circuits Rwy 08 & 13 (CAR 602.96).</p> <p>RVO for Rwy 13/31: During ATC hours of ops, when vis is below 1/4sm and RVR is 1200 or above, one in/one out ops will be provided.</p> <p>Hi power run-up other than engine-clearing after de-icing to be conducted on a rwy CL during ATC HR of ops only, subject to ATC appr. Avoid jet-blast to bldg adj to Apron II.</p>
NOISE	<p>NOISE ABATEMENT PROCEDURE: All acft. ATC assigned rwys will divert arr & dep from noise sensitive areas. When twr clsd & operational conds permit, arr on Rwy 08 or 13, dep on Rwy 26 or 31. See CAP.</p> <p>ATS PPR REQUIREMENTS: Ctc Winnipeg ACC 204-984-5979 for IFR tng and photo survey within Regina Class E Transponder Airspace.</p>
CAUTION	<p>Ozone research radiosonde balloon flt fr N50 12 10 W104 42 45 (13.9NM S airport), max alt 115,000 MSL. Launches at 1715Z every Wed wx permitting, otherwise launches Thu or Fri at 1715Z. High sfc winds will delay release to 2315Z Wed, Thu or Fri. Inst package measures 20x20x26 cm, wt 1.2 kg, off-white 2 m dia balloon. Ascent rate 1000' per min, aprx ascent matrix:</p> <p>10,000 MSL, launch + 8 min, 20,000 MSL, launch + 18 min, 30,000 MSL, launch + 28 min, 40,000 MSL, launch + 38 min, 50,000 MSL, launch + 48 min.</p> <p>Stationary vertical green laser lgt beam projection from Observatory at N50 12 14 W104 42 47 (aprx 14NM S A/D). Beam diverges by factor of 10 with beam dia aprx 15' at 3280 AGL and aprx 30' at 6560 AGL abv lgt source. Laser lgt beam may be injurious to eyes within 5200' vertically of lgt source. Flash blindness could occur to 8600' ASL and cockpit illumination beyond this dist. Laser beam will be activated periodically in non-precipitation conds only.</p> <p>Extv bird & wildlife activity in vic A/D.</p>