
FLIGHT PLAN & SITE SURVEY

L 188-5849 BRAMALEA RADIO CONTROL FLYERS INC.- St
Maria Goretti Elementry - Indoor Site

April 29, 2026



IMPORTANT NOTICE

Please ensure you have received all required authorizations prior to flight. This Site Survey was created using RPAS Wilco. The user accepts all responsibility for the accuracy of the information.

Terms & Conditions: rpaswilco.com/#tnc

Mission Information

L 188-5849 BRAMALEA RADIO CONTROL FLYERS INC.- ST MARIA GORETTI ELEMENTRY - INDOOR SITE

FLIGHT DETAILS

Reference No:	MAAC-188-5849
Project Name:	BRAMALEA RADIO CONTROL FLYERS INC.
Pilot Name:	MAAC
Pilot Certificate:	
Mission Type:	VLOS
Flight Start:	April 29, 2026 06:27 PM
Flight End:	April 29, 2026 07:27 PM

LOCATION DETAILS

Flight Address:	St Maria Goretti Elementary - Indoor Site
Latitude:	43° 41' 47.15" N (43.696)
Longitude:	79° 47' 20.35" W (-79.789)
Altitude / Radius:	400 ft / 926.0 m (0.5 nm)
Classification:	CONTROLLED
FIR / Contact:	CZYZ / 905-676-4509

NOTES

Your flight is in controlled airspace.
If your RPAS is > 250g, please obtain RPAS Flight Authorization using the NavDrone app or by contacting NavCanada. (CARs 901.71)





REPORT CONTENTS

Site Survey • Obstacles (if available) • Nearby Aerodromes • Canadian Aviation Regulations • GFA • Aerodrome Supplements • METAR & TAF • NOTAMs • CFS

Flight Map & MODEL Details

MISSION LOCATION SURVEY

MISSION LOCATION DETAILS

ROLE	LATITUDE	LONGITUDE
 MODEL	43° 41' 47.15" N 43.696	79° 47' 20.35" W -79.789
 Pilot		
 Payload Op.		
 Observer		

Airspace Classification

MISSION LOCATION SURVEY

AIRSPACE MAP



OVERLYING AIRSPACES

Class	Name	Floor	Ceiling
E	Southern Ontario Low Level Control Area c) [CAE]	6500MSL	18000MSL
E	Toronto, ON [TSP]	6500MSL	12500MSL
C	Toronto/Lester B. Pearson Intl, ON [CZ]	SFC	2500MSL
E	3.4.1-43 [TA]	700AGL	18000MSL
E	Southern Ontario Low Level Control Area a) [CAE]	2500MSL	6500MSL
C	Toronto, ON d) [TCA]	3500MSL	4500MSL
C	Toronto, ON e) [TCA]	4500MSL	12500MSL

NEAREST AERODROMES & DISTANCE FROM OPERATION

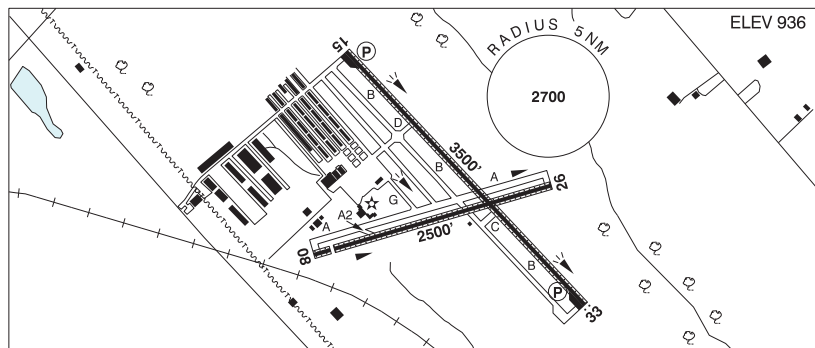
BRAMPTON-CALEDON (CNC3 - AERODROME - Cert)	Lat: 43.76	Long: -79.874	9.83KM	5.31NM	NW
LESTER B. PEARSON INTL (CYYZ - AERODROME - Cert)	Lat: 43.676	Long: -79.63	12.984KM	7.01NM	E
TARTEN (CPA5 - HELIPORT - Cert)	Lat: 43.654	Long: -79.658	11.543KM	6.23NM	SE

ONTARIO

AERODROME / FACILITY DIRECTORY

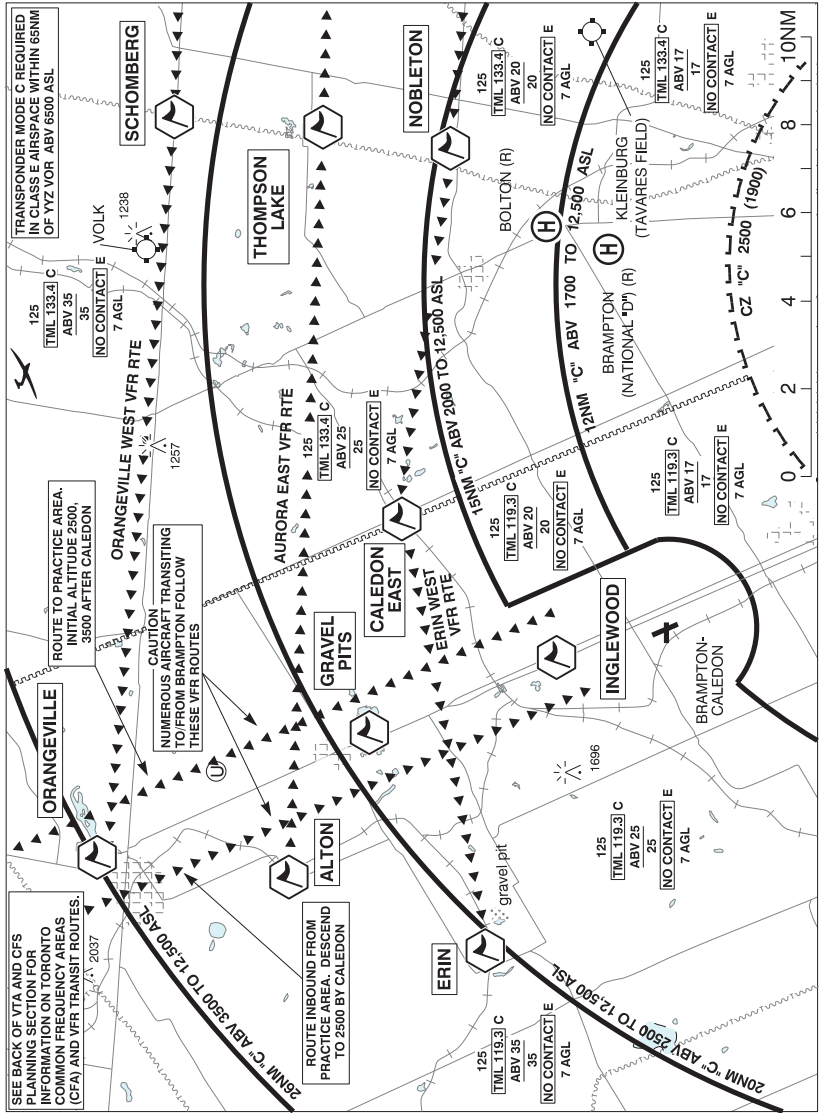
BRAMPTON-CALEDON ON

CNC3



REF	N43 45 35 W79 52 26 10°W UTC-5(4) Elev 936' VTA A5000 LO6 T2 CAP
OPR	Brampton Flying 905-838-1400 Cert Opr ltd hrs
PF	B-1,2 C-3,4,5,6
CUST	AOE/CAN
FLT PLN	<p>FIC London 866-WXBRIEF (Toll free within Canada) or 866-541-4104 (Toll free within Canada & USA)</p> <p>ACC Toronto 905-676-4590/4591/4592 or 888-217-1241</p> <p>WX WxCam</p> <p>DUAT Flying Club</p>
SERVICES	<p>FUEL 100LL</p> <p>OIL All</p> <p>S 1,2,3,4,5,6</p>
RWY DATA	<p>Rwy 15(146°)/33(326°) 3500x75 ASPH/GRASS, centre 40' asphalt</p> <p>Rwy 08(081°)/26(261°) 2500x75 ASPH/GRASS, centre 40' asphalt Thld 08 displ 191'.</p>
RWY CERT	Rwy 15/33 AGN I
RCR	Rwy 08/26 AGN I
LIGHTING	Opr Rws rstd to acft 12,500 lbs and under. Ltd win maint
LIGHTING	08-(TE ME), 15-(TE HI) AP, 26-(TE ME), 33-AS(TE HI) AP ARCAL-123.3 type K Win PN
COMM	
ATF	UNICOM ltd hrs O/T tfc 123.3 5NM up to 2500 ASL excluding that portion which penetrates Toronto class C Airspace
PRO	Call opr prior to ARCAL ops when win wx might affect rwy cond. Due to close proximity to Toronto/Lester B. Pearson Intl., there may be periods when ATC will be unable to approve use of the inst apch pro. Helicopters arr/dep via active rwy then taxi to/fr designated helicopter area btwn Golf & Bravo at Alpha. Acft with main gear track 18' and over use Rwy 15/33 then turn around bay and backtrack to twy D and apron.
CAUTION	Painted & lgtd twr 1696 ASL (400 AGL) aprx 4NM WNW. Narrow twys (18') exc twy D (24').

BRAMPTON-CALEDON VFR TERMINAL PROCEDURES CHART



ONTARIO

AERODROME / FACILITY DIRECTORY

BRAMPTON-CALEDON VFR TERMINAL PROCEDURES CHART (Cont'd)

NAME	IDENT	LAT/LONG
ALTON	VCALT	N43° 51' 30" W080° 04' 00"
CALEDON EAST	VCLDE	N43° 52' 12" W079° 52' 00"
ERIN	VCERN	N43° 46' 48" W080° 04' 12"
GRAVEL PITS	VCGVL	N43° 51' 06" W079° 59' 06"
INGLEWOOD	VCIWD	N43° 47' 30" W079° 54' 18"
NOBLETON	VCNBL	N43° 54' 00" W079° 40' 00"
ORANGEVILLE	VCORG	N43° 55' 45" W080° 06' 15"
SCHOMBERG	VCSBG	N44° 00' 24" W079° 42' 00"
THOMPSON LAKE	VCTHL	N43° 57' 00" W079° 41' 36"

ONTARIO

AERODROME / FACILITY DIRECTORY

TORONTO / LESTER B. PEARSON INTL ON (Cont'd)

CYYZ

CUST	AOE 888-226-7277 General aviation aircraft must clear customs at the fixed base opr of their choice. Ramp charges may apply.
FLT PLN	Pilots to open/close VFR Flt Pln with London FIC via phone or London rdo 123.275 when practicable.
FIC	London 866-WXBRIEF (Toll free within Canada) or 866-541-4104 (Toll free within Canada & USA)
WX	METAR H24. TAF H24, issue times: 00, 03, 06, 09, 12, 15, 18 & 21Z.
ACC	Toronto 905-676-4590/4591/4592 or 888-217-1241. Flt pln by Fax at 905-676-5044 & include phone numbers where pilot can be reached prior to dep.
DUAT	Esso Avitat; Landmark Aviation; Skycharter
SERVICES	
FUEL	JA, JA-1 (FSII avbl), JB, HPR
OIL	All
S	1,2,3
ARFF	DESIGNATED CAT 9
SUP FL	D & A-ice, LHOX
JASU	CE16
PVT ADV	Landmark Aviation 122.95 H24; Skycharter Ltd 129.75 1130-08Z† Skyservice/Esso Avitat 128.95 H24
MIL CON	Signature Flight Support (Shell) 905-677-5777

ONTARIO

AERODROME / FACILITY DIRECTORY

TORONTO / LESTER B. PEARSON INTL ON (Cont'd)

CYYZ

RWY DATA	<p>Rwy 15L(147°)/33R(327°) 11,050x200 ASPH Rwy 15R(147°)/33L(327°) 9088x197 ASPH Thlds 15R & 33L displ 588 Rwy 05(057°)/23(237°) 11,120x200 ASPH Thld 05 displ 135' Thld 23 displ 686' Rwy 06L(057°)/24R(237°) 9697x197 ASPH Thld 24R displ 197' Rwy 06R(057°)/24L(237°) 9000x197 ASPH RESA: All Rwys 492' Departures from holding bay inner centerlines Rwy 06L/D6, 24R/C5 and 05/H6 subtract 263' from declared distances.</p>
RWY CERT	<p>Rwy 15L RVR 1200(1/4sm)/Rwy 33R RVR 600 AGN V Rwy 15R RVR 1200(1/4sm)/Rwy 33L RVR 1200(1/4sm) AGN V Rwy 05 RVR 600/Rwy 23 RVR 1200(1/4sm) AGN V Rwy 06L RVR 600/Rwy 24R RVR 1200(1/4sm) AGN V Rwy 06R RVR 1200(1/4sm)/Rwy 24L RVR 1200(1/4sm) AGN V</p>
TWY CERT	<p>Twy JC AGN II Twy K AGN IV Twy: W, Y AGN IIIB</p>
TWY	<p>Twy D4, D5 south of rwy 06L/24R: Angled rwy hold positions in effect. Twy K is <u>uncontrolled</u> & is rstd to acft with wingspans 41.15m/135' (B757W) or less & an Aircraft Load Rating of 9.0 or less. Other acft may be auth with prior appr from opr. Design spd for C2, B2, H3, D1, D2, D3, D4, D5, D7 & D8 is 50 kt (93 kph). Design spd for J2, F1, F2, F3 & F4 is 45 kt (85 kph). All other rapid exits designed for an exit speed of 35 kt (65kph). Normal Rwy 23 depts are from Twy "H". Rwy 23 depts do not enter Twy "Q" without specific clearance from ATC. Acft requiring full length must notify gnd ctl on initial contact. During CAT II/III arrivals 05 departures shall be from H6 Twys W & Y rstd to acft with wingspans less than 36m.</p>
APRON	<p>At all T1, T1 East Hold, T3, Infield & FedEx Apron/Parking areas, all acft must contact the applicable Apron Advisory prior to engine start at gate, pushback or taxi. Fedex Apron rstd to acft with wingspans 51.9m/170' or less. Taxilane btwn 3C and 4C rstd to acft with wingspans less than 36m. Wingspans of 64.9m/213' permitted to Gate C27 Code E. Asphalt apron sfc E of positions 5G and 6F to 101A rstd to acft with wingspans 28.4m/93' (DH8-400) or less & an acft load rating of 9.0 or less. Outer/East loop btwn 7E-8E rstd to acft with wingspans less than 36m and Inner/East loop btwn 7D-8D rstd to acft with wingspans 79.9m/262' or less. Simultaneous use of lane 7 & 8 max wingspan 64.9m/213' Code E. Outer/North loop btwn 9C-9D-10D-10C rstd to acft with wingspans less than 36m. Strict adherence to Taxilane centreline required btwn DR and DV and on Taxilanes 10 through 12. Taxilane 10 rstd to acft with wingspans 36m/118' or less. Refer to CAP parking areas (Terminal 1 and Terminal 1 East Hold) for details. Proceed only to gates assigned by Apron Advisory. Bombardier Apron: Pvt SkyService South Apron: Heli ops not auth. Pvt.</p>
RCR	<p>Opr CRFI, PCN</p>
LIGHTING	<p>05-AL(TE HI A TDZL) P3, 23-(TE HI A) P3 06L-AL(TE HI A TDZL) P3, 24R-AW AS(TE HI A) P3 06R-AN(TE HI A) P3, 24L-AN(TE HI A) P3 15R-AN(TE HI) P3, 33L-AN(TE HI) P3 15L-AN(TE HI A) P3, 33R-AN(TE HI A) P3</p>

ONTARIO

AERODROME / FACILITY DIRECTORY

TORONTO / LESTER B. PEARSON INTL ON (Cont'd)

CYYZ

COMM

RCO London rdo 123.275 (FISE)
ATIS 120.825
CLNC DEL 121.3 all dep acft ctc clnc del dur 12-04Z†
APRON ADV North apron 122.275 (122.825)
 South apron 122.075 (122.825)
 A-CDM Coordinator 122.875 (122.825)
 Apron Tow Coordinator 136.525
 FedEx, Infield Concourse, Cargo West 122.275 (North apron),
 Skyservice/Avitat, 3 Bay Hgr Aprons 122.075 (South apron).
GND 119.1 121.65 121.9
TWR Toronto 118.35 118.7 (E) (emerg only 905-676-3588)
ARR 124.475 125.4 132.8 134.175
DEP 127.575 128.8
VFR ADV 119.3 133.4

NAV

VOR/DME YYZ 112.15 Ch 58(Y) N43 39 29 W79 37 53 (561')
 PEARSON YTP 116.55 Ch 112(Y) N43 40 18 W79 39 50 (595')
DME IDP 111.95 Ch 56(Y) N43 39 41 W79 37 12 (552') IDP DME bi-directional
 antenna reliable only within 25° either side of IDP and ICV localizer centerlines.
 IJS 109.1 Ch 28 N43 39 44 W79 37 10 (551')
 INV 109.3 Ch 30 N43 40 33 W79 35 58 (565')
 ITO 110.95 Ch 46(Y) N43 40 13 W79 38 03 (572')
ILS ICV 111.95 (Rwy 06R) RVR
 IDP 111.95 (Rwy 24L) RVR
 IJS 109.1 (Rwy 06L) RVR
 ILP 110.95 (Rwy 15R) RVR
 INV 109.3 (Rwy 24R) RVR
 ITO 110.95 (Rwy 33L) RVR
 ITX 109.7 (Rwy 05) RVR
 ILE 110.3 (Rwy 33R) RVR
 IRW 110.5 (Rwy 15L) RVR
 IYZ 111.5 (Rwy 23) RVR

RESTRICTIONS

OPERATING RESTRICTIONS

The following restrictions are in effect:

1. All acft oprg to/fr the A/D are rqr'd to obtain a slot for all ops.
2. Training flights are not permitted in the Toronto Control Zone from 0000-0700 local time. For other times, prior permission is required from National Traffic Management Unit (FLOW CTL) 800-268-4831 or 905-676-3528.
3. All maintenance runs/runups must be conducted in accordance with GTAA APRON & MAINTENANCE RUN PROCEDURES (avbl from opr-tel 416-776-3056). Upon approval contact Apron Coordinator frequency.
4. Airport Reservation Office (ARO) procedure for all General Aviation and Business Aviation acft oprg IFR & VFR flights. Operators must file a dep and arr reservation through an online coordination system; more info avbl on www.torontopearson.com/aro. Ctc ARO at 416-776-7568 or 1-800-267-7568.
5. Opr may implement a Dep Tfc Management Initiative (D-TMI) due capacity reduction on rwys, deicing facility, or other constraint. Existing slots and reservations may be reallocated to balance hourly demand with capacity. When D-TMI in effect, scheduled operators to verify slot reallocation through Airport Collaborative Decision Making (A-CDM) and General & Business Aviation to verify reservations through their FBO.

NOISE ABATEMENT RESTRICTIONS

Pursuant to CAR 602.105 and CAR 602.106, the following restrictions are in effect:

1. Noise abatement pro apply to all acft, (VFR & IFR) wx permitting 04-12Z±.
2. Arrivals and departures of acft are rstd as per the table below:

Aircraft	Restricted Hours - local time
Noise Certification or Type	Arrivals & Departures
I All non-noise certificated jet aircraft	2000 - 0800
II All ICAO annex 16, vol 1 chapter 2 & equivalent aircraft	0000 - 0700
III All ICAO annex 16, vol 1 chapter 3 & equivalent aircraft (subject to paragraph 4 or 5)	0030 - 0630
IV All other aircraft (subject to paragraph 4 or 5)	0030 - 0630

- a) Non-noise certificated jet powered acft are prohibited from departing on Runways 05, 06L, 06R, 15L, 15R and 33L.
 - b) Between 0000 and 0630 local time, departures are prohibited on Rwys 05, 06L, 06R, 15L and 15R and arrivals are prohibited on Rwys 24R, 24L, 23, 33R, 33L and 15R unless assigned by ATC.
 - c) All acft operating on a scheduled and repetitive basis are rqr'd to obtain an extension or an exemption to opr dur the rstd hrs. Submit req for oprg ext on the day of ops to the GTAA with justification at 416-776-3480 or 1-800-267-SLOT (7568), (fax 416-776-5552). For advance exemption requests or information, make submission in writing to the Manager, Slots & Capacity Allocation, Greater Toronto Airports Authority, Toronto Pearson International Airport, P.O. Box 6031, Toronto AMF, Ontario, L5P 1B2 (fax 416-776-3483).
 - d) All other ops are rqr'd to obtain permission to opr dur the rstd hrs by contacting the GTAA on the day of operation at 416-776-3480 or 1-800-267-SLOT (7568), (fax 416-776-5552).
3. VFR acft 04-12Z±: climb rwy hdg to 3600 ASL. When wx does not permit climbing to 3600 ASL, climb rwy hdg to max alt allowed by rules for VFR flt in controlled airspace.

TORONTO / LESTER B. PEARSON INTL ON (Cont'd)

CYYZ

PRO

Pilots should refer to Canadian Airport Charts (CAC) to obtain details on established hot spots, prior to operating on maneuvering areas. CAC are available for free on the NAV CANADA website.

IFR CLEARANCE ACKNOWLEDGEMENT

Acknowledgment of IFR clncs with Toronto twr clnc del shall include the acft call sign, transponder code & name of SID pro that was assigned in the IFR clnc.

When informed by ATIS or by the arr controller that simultaneous ILS apchs are in progress, pilots shall advise the arr controller immediately of any avionics unsvc or if unable to comply. In VFR wx acft may be vectored to intercept the lczr at a point above the GP.

Clnc to opr within the Toronto class C airspace will only be given to acft equipped with functioning transponder & mode C unless prior approval obtained from ATC 905-676-4509 (IFR acft) or 3589 (VFR acft).

Multilateration: Pilots must keep their transponder on at all times when maneuvering on the aprt, turned on prior to brake release and on arrival, on until final engine shutdown. Pilots that do not have a transponder code issued by ATC must squawk 1000 when taxiing.

CROSSWIND CONDITIONS

Anticipate landing 05/23 & 06L/24R in crosswinds up to 30 kt at 90°.

DURING SNOW CLEARING OPERATIONS

Acft should be prepared to dep from any rwy (incl 06L & 06R).

DE-ICING OPERATIONS

CENTRAL DE-ICING FACILITY (CDF)

OVERVIEW

All de-icing ops are performed with acft engines oprg, unless otherwise advised by Pad Control or ICEMAN.

Pad 1 & 5

- Centre lane will accommodate all acft.
- Acft with wingspans less than 36m may use North/South lanes.

Pad 2, 3, 4 & 6

- Centre lanes will accommodate acft with wingspans 64.9m/213ft and smaller.
- Acft with wingspans less than 36m may use North/South lanes.

1. Prior to departing Parking Position, ctc CLNC DEL/APRON/GND (as applicable) and advise, "ACFT DE-ICING REQUIRED".
2. On Twys T,V and E, hold short of ICE# and when directed by Ground Control monitor Pad Control on 131.17. Follow Pad Control taxi instructions to the entrance of the de-icing pad.
3. When directed by Pad Control ctc ICEMAN on the assigned freq (129.62 or 131.37).
4. Follow verbal instructions, guidance displays and lights (as applicable) into staging and/or de-icing bays.
5. Once acft is in final stop position, brakes are set and acft configured for de-icing, ctc ICEMAN and advise, "BRAKES SET, ACFT CONFIGURED, READY TO DE-ICE". At this time, pass along any specific fluid and/or treatment requirements.
6. After de-icing, do not move acft. Ctc Pad Control on 131.17 when instructed by ICEMAN to obtain taxi instruction.
7. Follow Pad Control instruction to designated exit points. When instructed by Pad Control ctc Ground Control on assigned freq.
8. Specific acft operations plan in effect for acft with wingspans 65m/214ft up to 79.9m/262ft. Restrictions in place include:

- For Central De-icing Facility (CDF) operations, no turns from Twy E into any of the de-icing pads are permitted. The only taxi routes permitted for de-icing are via Twy T into Pad 5 and via Twy V into Pad 1.

ONTARIO

AERODROME / FACILITY DIRECTORY

TORONTO / TARTEN ON (Heli)

CPA5

REF	N43 39 14 W79 39 28 Adj W 10°W UTC-5(4) Elev 560' VTA A5000	
OPR	Tarten Equipment Ltd 905-670-1704 Cert PPR	
FLT PLN	Pilots to open/close VFR Flt Pln with London FIC via phone or London rdo 123.275 when practicable.	
FIC	London 866-WXBRIEF (Toll free within Canada) or 866-541-4104 (Toll free within Canada & USA)	
HELI DATA	65' x 65' ASPH 85' x 85' Max heli overall length 43.3'	
RCR	Opr	
COMM		
TWR	Toronto 118.35 118.7	
PRO	Arr/dep 329° fr heli, slope 8% (H3), day use only. Ctc Toronto twr for specific instructions prior tkof & ldg. Heli on 208° rad/2.0 DME fr YYZ VOR.	