

---

# FLIGHT PLAN & SITE SURVEY

---

L 424-5088 HALTON HILLS M.F.C.- 16763 17TH SIDE ROAD  
HALTON HILLS (GEORGETOWN)

April 29, 2026



## IMPORTANT NOTICE

Please ensure you have received all required authorizations prior to flight. This Site Survey was created using RPAS Wilco. The user accepts all responsibility for the accuracy of the information.

Terms & Conditions: [rpswilco.com/#tnc](https://rpswilco.com/#tnc)

# Mission Information

L 424-5088 HALTON HILLS M.F.C.- 16763 17TH SIDE ROAD HALTON HILLS (GEORGETOWN)

## FLIGHT DETAILS

Reference No:	<b>MAAC-424-5088</b>
Project Name:	<b>HALTON HILLS M.F.C.</b>
Pilot Name:	<b>MAAC</b>
Pilot Certificate:	
Mission Type:	<b>VLOS</b>
Flight Start:	<b>April 29, 2026 07:14 PM</b>
Flight End:	<b>April 29, 2026 08:14 PM</b>

## LOCATION DETAILS

Flight Address:	<b>16763 17TH SIDE ROAD HALTON HILLS (GEORGETOWN)</b>
Latitude:	<b>43° 40' 26.30" N ( 43.674 )</b>
Longitude:	<b>79° 53' 31.60" W ( -79.892 )</b>
Altitude / Radius:	<b>400 ft / 926.0 m ( 0.5 nm)</b>
Classification:	<b>UNCONTROLLED</b>
FIR / Contact:	<b>CZYZ / 905-676-4509</b>





## REPORT CONTENTS

Site Survey • Obstacles (if available) • Nearby Aerodromes • Canadian Aviation Regulations • GFA • Aerodrome Supplements • METAR & TAF • NOTAMs • CFS

# Flight Map & MODEL Details

MISSION LOCATION SURVEY

## MISSION LOCATION DETAILS

ROLE	LATITUDE	LONGITUDE
 MODEL	43° 40' 26.30" N 43.674	79° 53' 31.60" W -79.892
 Pilot		
 Payload Op.		
 Observer		

# Airspace Classification

MISSION LOCATION SURVEY

## AIRSPACE MAP



## OVERLYING AIRSPACES

Class	Name	Floor	Ceiling
E	Southern Ontario Low Level Control Area c) [CAE]	6500MSL	18000MSL
E	Toronto, ON [TSP]	6500MSL	12500MSL
E	3.4.1-43 [TA]	700AGL	18000MSL
E	Southern Ontario Low Level Control Area a) [CAE]	2500MSL	6500MSL
C	Toronto, ON d) [TCA]	3500MSL	4500MSL
C	Toronto, ON e) [TCA]	4500MSL	12500MSL

## NEAREST AERODROMES & DISTANCE FROM OPERATION

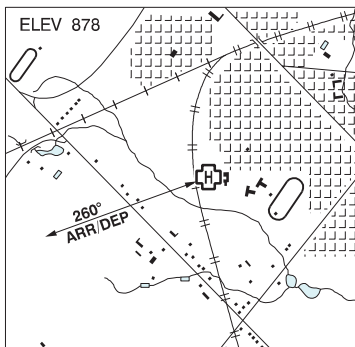
GEORGETOWN (GEORGETOWN AND DISTRICT HOSP) (CNZ6 - HELIPORT - Cert)	Lat: 43.644	Long: -79.934	4.739KM	2.56NM	SW
BRAMPTON-CALEDON (CNC3 - AERODROME - Cert)	Lat: 43.76	Long: -79.874	9.676KM	5.22NM	N
MILTON (AFI) (CMH2 - HELIPORT - Reg)	Lat: 43.532	Long: -79.903	15.811KM	8.54NM	S

## ONTARIO

## AERODROME / FACILITY DIRECTORY

**GEORGETOWN (GEORGETOWN & DISTRICT HOSP) ON (Heli)****CN26**

<b>REF</b>	N43 38 40 W79 56 04 Adj SW 10°W UTC-5(4) Elev 878' VTA A5000
<b>OPR</b>	Georgetown & District Hosp 905-873-0111 Cert PPR
<b>FLT PLN</b>	
<b>FIC</b>	London 866-WXBRIEF (Toll free within Canada) or 866-541-4104 (Toll free within Canada & USA)
<b>HELI DATA</b>	FATO/TLOF 83' x 83' ASPH Safety Area 114' x 114' Max heli overall length 55.3' Opr
<b>RCR</b>	
<b>LIGHTING</b>	DR RY(LO) LED green RF(FL)
<b>PRO</b>	Arr/dep 260° fr heli, slope 12% (H2).

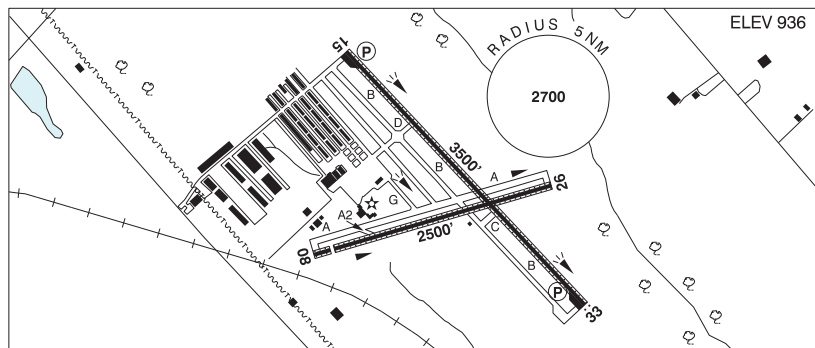


## ONTARIO

## AERODROME / FACILITY DIRECTORY

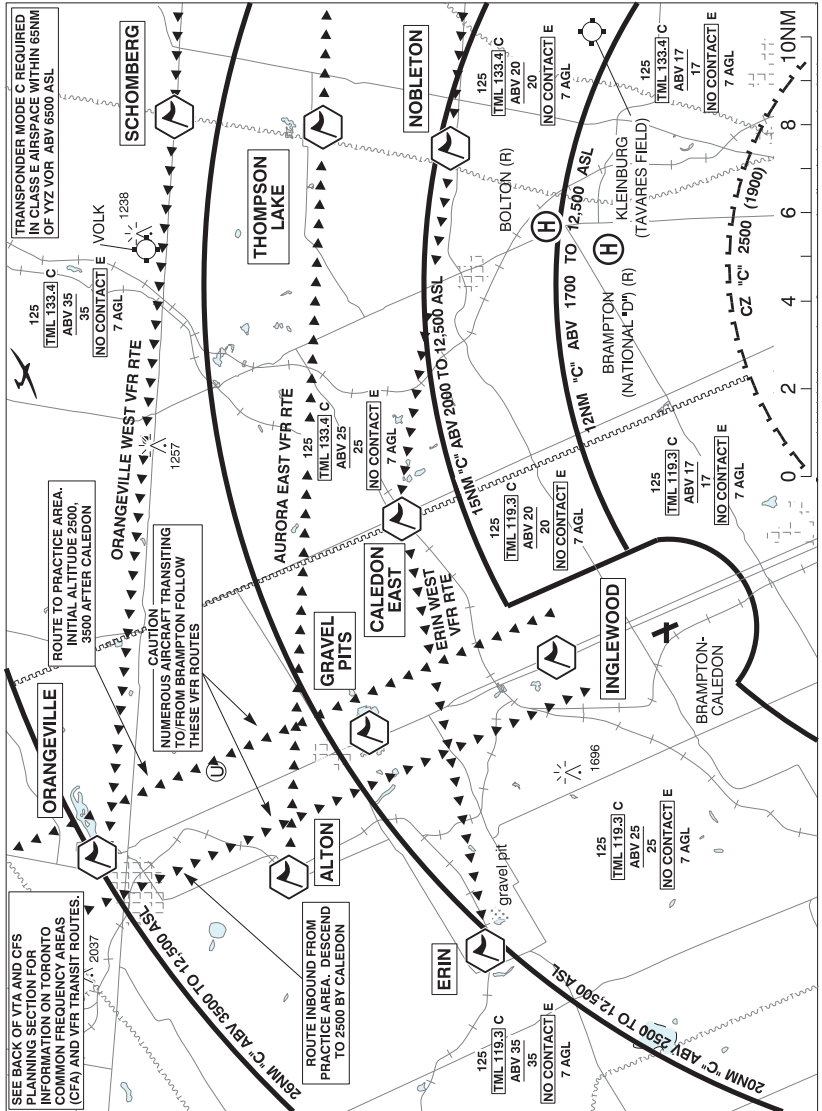
## BRAMPTON-CALEDON ON

CNC3



<b>REF</b>	N43 45 35 W79 52 26 10°W UTC-5(4) Elev 936' VTA A5000 LO6 T2 CAP
<b>OPR</b>	Brampton Flying 905-838-1400 Cert Opr ltd hrs
<b>PF</b>	B-1,2 C-3,4,5,6
<b>CUST</b>	AOE/CAN
<b>FLT PLN</b>	<p><b>FIC</b> London 866-WXBRIEF (Toll free within Canada) or 866-541-4104 (Toll free within Canada &amp; USA)</p> <p><b>ACC</b> Toronto 905-676-4590/4591/4592 or 888-217-1241</p> <p><b>WX</b> WxCam</p> <p><b>DUAT</b> Flying Club</p>
<b>SERVICES</b>	<p><b>FUEL</b> 100LL</p> <p><b>OIL</b> All</p> <p><b>S</b> 1,2,3,4,5,6</p>
<b>RWY DATA</b>	<p>Rwy 15(146°)/33(326°) 3500x75 ASPH/GRASS, centre 40' asphalt</p> <p>Rwy 08(081°)/26(261°) 2500x75 ASPH/GRASS, centre 40' asphalt Thld 08 displ 191'.</p>
<b>RWY CERT</b>	Rwy 15/33 AGN I
<b>RCR</b>	Rwy 08/26 AGN I
<b>LIGHTING</b>	Opr Rws rstd to acft 12,500 lbs and under. Ltd win maint
<b>LIGHTING</b>	08-(TE ME), 15-(TE HI) AP, 26-(TE ME), 33-AS(TE HI) AP ARCAL-123.3 type K Win PN
<b>COMM</b>	
<b>ATF</b>	UNICOM ltd hrs O/T tfc 123.3 5NM up to 2500 ASL excluding that portion which penetrates Toronto class C Airspace
<b>PRO</b>	Call opr prior to ARCAL ops when win wx might affect rwy cond. Due to close proximity to Toronto/Lester B. Pearson Intl., there may be periods when ATC will be unable to approve use of the inst apch pro. Helicopters arr/dep via active rwy then taxi to/fr designated helicopter area btwn Golf & Bravo at Alpha. Acft with main gear track 18' and over use Rwy 15/33 then turn around bay and backtrack to twy D and apron.
<b>CAUTION</b>	Painted & lgtd twr 1696 ASL (400 AGL) aprx 4NM WNW. Narrow twys (18') exc twy D (24').

**BRAMPTON-CALEDON VFR TERMINAL PROCEDURES CHART**



## ONTARIO

## AERODROME / FACILITY DIRECTORY

**BRAMPTON-CALEDON VFR TERMINAL PROCEDURES CHART (Cont'd)**

<b>NAME</b>	<b>IDENT</b>	<b>LAT/LONG</b>
ALTON	VCALT	N43° 51' 30" W080° 04' 00"
CALEDON EAST	VCLDE	N43° 52' 12" W079° 52' 00"
ERIN	VCERN	N43° 46' 48" W080° 04' 12"
GRAVEL PITS	VCGVL	N43° 51' 06" W079° 59' 06"
INGLEWOOD	VCIWD	N43° 47' 30" W079° 54' 18"
NOBLETON	VCNBL	N43° 54' 00" W079° 40' 00"
ORANGEVILLE	VCORG	N43° 55' 45" W080° 06' 15"
SCHOMBERG	VCSBG	N44° 00' 24" W079° 42' 00"
THOMPSON LAKE	VCTHL	N43° 57' 00" W079° 41' 36"

## ONTARIO

## AERODROME / FACILITY DIRECTORY

**MILTON (AFI) ON (Heli)****CMH2**

<b>REF</b>	N43 31 56 W79 54 10 Adj N 10°W UTC-5(4) Elev 687' VTA A5000
<b>OPR</b>	AFI Group International Inc 905-693-0746 Reg PN
<b>PF</b>	A-1 B-2,3,4,5
<b>FLT PLN</b>	<b>FIC</b> London 866-WXBRIEF (Toll free within Canada) or 866-541-4104 (Toll free within Canada & USA)
<b>HELI DATA</b>	60' x 60' CONC 80' x 80' rstd max length 40' <b>RCR</b> Opr
<b>LIGHTING</b>	RY(LO)
<b>COMM</b>	<b>VFR ADV</b> Toronto 119.3
<b>PRO</b>	Arr/dep btwn 210°-270° fr heli.
<b>CAUTION</b>	Numerous twr within 5NM.

