
FLIGHT PLAN & SITE SURVEY

L 127-5297 OSHAWA R/C CLUB INC.- MAXWELL HEIGHTS
SECONDARY SCHOOL

April 29, 2026



IMPORTANT NOTICE

Please ensure you have received all required authorizations prior to flight. This Site Survey was created using RPAS Wilco. The user accepts all responsibility for the accuracy of the information.

Terms & Conditions: rpaswilco.com/#tnc

Mission Information

L 127-5297 OSHAWA R/C CLUB INC. - MAXWELL HEIGHTS SECONDARY SCHOOL

FLIGHT DETAILS

Reference No:	MAAC-127-5297
Project Name:	OSHAWA R/C CLUB INC.
Pilot Name:	MAAC
Pilot Certificate:	
Mission Type:	VLOS
Flight Start:	April 29, 2026 06:24 PM
Flight End:	April 29, 2026 07:24 PM

LOCATION DETAILS

Flight Address:	MAXWELL HEIGHTS SECONDARY SCHOOL
Latitude:	43° 56' 43.79" N (43.945)
Longitude:	78° 51' 1.71" W (-78.85)
Altitude / Radius:	400 ft / 926.0 m (0.5 nm)
Classification:	CONTROLLED
FIR / Contact:	CZYZ / 905-676-4509

NOTES

Your flight is in controlled airspace.

If your RPAS is > 250g, please obtain RPAS Flight Authorization using the NavDrone app or by contacting NavCanada. (CARs 901.71)





REPORT CONTENTS

Site Survey • Obstacles (if available) • Nearby Aerodromes • Canadian Aviation Regulations • GFA • Aerodrome Supplements • METAR & TAF • NOTAMs • CFS

Flight Map & MODEL Details

MISSION LOCATION SURVEY

MISSION LOCATION DETAILS

ROLE	LATITUDE	LONGITUDE
 MODEL	43° 56' 43.79" N 43.945	78° 51' 1.71" W -78.85
 Pilot		
 Payload Op.		
 Observer		

Airspace Classification

MISSION LOCATION SURVEY

AIRSPACE MAP



OVERLYING AIRSPACES

Class	Name	Floor	Ceiling
E	Southern Ontario Low Level Control Area a) [CAE]	2500MSL	6500MSL
E	Southern Ontario Low Level Control Area c) [CAE]	6500MSL	18000MSL
E	Toronto, ON [TSP]	6500MSL	12500MSL
E	T781 Fixed RNAV Route	2200AGL	18000MSL
E	3.4.1-43 [TA]	700AGL	18000MSL
D	Oshawa, ON [CZ]	SFC	3000MSL

NEAREST AERODROMES & DISTANCE FROM OPERATION

OSHAWA EXECUTIVE AIRPORT (CYOO - AERODROME - Cert)	Lat: 43.923	Long: -78.896	4.421KM	2.39NM	SW
HOSKIN (CPP3 - AERODROME - Reg)	Lat: 44.062	Long: -78.885	13.246KM	7.15NM	N
HAWKEFIELD (CHF4 - AERODROME - Reg)	Lat: 43.998	Long: -78.648	17.223KM	9.3NM	E

ONTARIO

AERODROME / FACILITY DIRECTORY

TORONTO / OSHAWA EXECUTIVE AIRPORT ON

CYOO

REF	N43 55 22 W78 53 47 Adj N 11°W (2015) UTC-5(4) Elev 460' VTA A5000 LO6 T2 CAP	
OPR	Corporation of the City of Oshawa 905-576-8146 11-04Z† O/T PN Cert	
PF	A-2,7 B-6 C-1,3,4,5	
CUST	AOE/50 1330-2130Z† Mon-Fri 888-226-7277; AOE/15 Gen Avn 12-05Z†	
FLT PLN	Pilots to open/close VFR flt pln with London rdo 123.15 or by phone.	
FIG	London 866-WXBRIEF (Toll free within Canada) or 866-541-4104 (Toll free within Canada & USA)	
WX	METAR AUTO H24 (see COMM) TAF H24, issue times: 02, 08, 14 and 20Z WxCam	
SERVICES		
FUEL	100LL (cardlock on Apron I), JA-1	
OIL	All	
S	1,2,3,4,5,6	
PVT ADV	Enterprise Air Inc 131.05 905-721-0054	
RWY DATA	Rwy 12(122°)/30(302°) 5057x100 ASPH Thld 12 displ 254' Thld 30 displ 554' Rwy 05(046°)/23(226°) 2654x100 ASPH Rwy 23 down 0.6%	
RWY CERT	Rwy 12 RVR 1200(1/4sm)/Rwy 30 RVR 1200(1/4sm) AGN IIIA Rwy 05/23 AGN II	
TWY CERT	Twy A AGN I Twy C: AGN I fr Apron V to Twy B & AGN IIIA fr Twy B to Rwy 12/30 & AGN I fr Rwy 12/30 to Rwy 05/23	
TWY	Normal Rwy 30 deps are from Twy B. Acft requiring full length must notify gnd ctl on initial contact. Twy C (north of B): Uncontrolled. Twy E: Rstd for use by piston-engine acft with wingspan of 43' or greater, and all turbojet and turbofan acft regardless of wingspan.	
RCR	Twr 905-576-2398 RSC/CRFI avbl 1130-0330Z† OPR 905-243-9376 RSC/CRFI avbl 0330-1130Z† PCN	
LIGHTING	05-AS(TE ME) P1, 23-(TE ME) P1, 12-AS(TE HI) P2, 30-AS(TE HI) P2 ARCAL-120.1 type K	
COMM		
RCO	London rdo 123.15 (FISE)	
ATIS	125.675 1130-0330Z†	
GND	118.4 1130-0330Z†	
TWR	120.1 (V) 1130-0330Z† (emerg only 905-576-2398)	
MF	tfc 120.1 0330-1130Z† 5NM 3000 ASL (CAR 602.98)	
ARR	Toronto tml 133.4	
DEP	Toronto tml 133.4	
AWOS	125.675 0330-1130Z†	

ONTARIO

AERODROME / FACILITY DIRECTORY

TORONTO / OSHAWA EXECUTIVE AIRPORT ON (Cont'd)

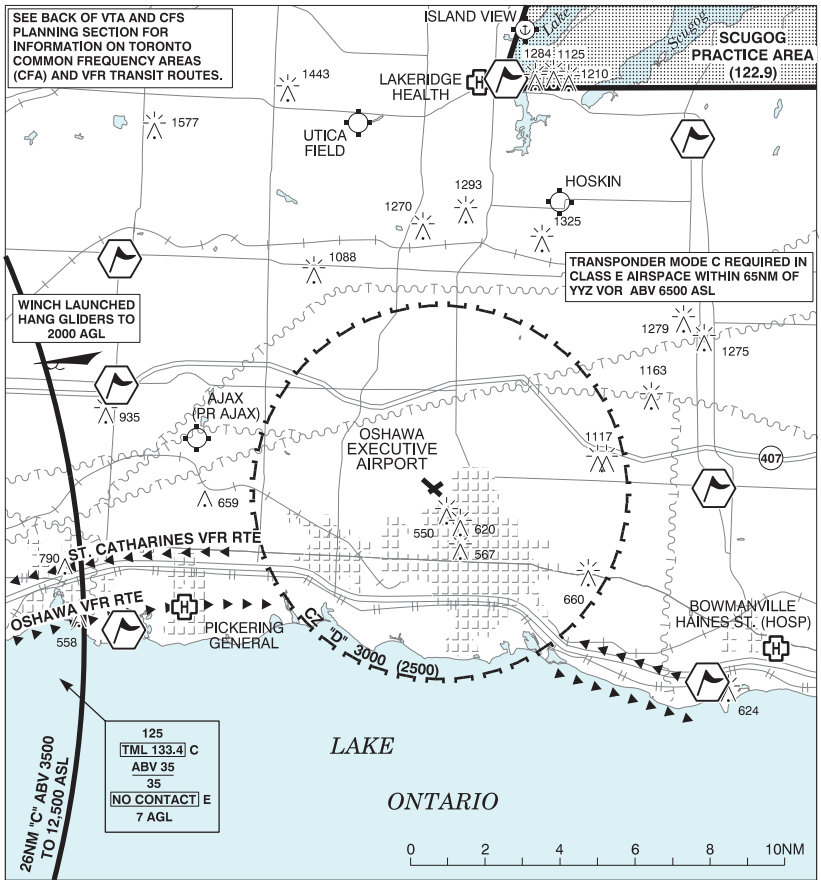
CYOO

PRO	Rgt hand circuits Rwy 23 & 30 (CAR 602.96). On dep no turns below 1000 ASL. Arr turns to final apch will be made at or above 1000 ASL. Fits proh btwn 2230 & 0630 lcl unless appr by APM. Ctc opr for details. Pilots are requested to maintain 2000 ASL or above over Metropolitan Toronto Zoo (N43 49 05 W79 11 15). Tng fit prohibited at all times unless approved by APM. Ctc OPR for details.
CAUTION	Winch launched hang gliders, cable up to 2000 AGL fr N43 55 W79 08 aprx 11NM W of A/D. Wildlife frequently on rwys.

ONTARIO

AERODROME / FACILITY DIRECTORY

TORONTO / OSHAWA EXECUTIVE AIRPORT VFR TERMINAL PROCEDURES CHART



NAME	IDENT	LAT/LONG
BLACKSTOCK	VCBLS	N44° 06' 34" W78° 49' 18"
BROUGHAM	VCBRH	N43° 55' 07" W79° 06' 23"
CLAREMONT	VCCLM	N43° 58' 19" W79° 07' 49"
HAMPTON	VCHMP	N43° 57' 57" W78° 44' 13"
PICKERING NUCLEAR POWER STATION	VCPKR	N43° 49' 00" W79° 03' 00"
PORT PERRY	VCPRY	N44° 06' 00" W78° 56' 42"
ST. MARY'S CEMENT	VCSMC	N43° 53' 00" W78° 42' 00"

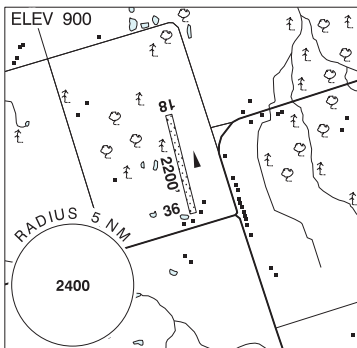
ONTARIO

AERODROME / FACILITY DIRECTORY

PORT PERRY / HOSKIN ON

CPP3

REF	N44 03 42 W78 53 07 2.5SE 11°W (2013) UTC-5(4) Elev 900' VTA A5000
OPR	Norm Hoskin 905-242-8920 Reg PPR
PF	C-1,2,3,4,5,6
FLT PLN	
FIC	London 866-WXBRIEF (Toll free within Canada) or 866-541-4104 (Toll free within Canada & USA)
SERVICES	
S	1,4,5
RWY DATA	Rwy 18(177°)/36(357°) 2200x60 GRASS
RCR	Opr No win maint Rwy soft when wet.
COMM	
ATF	tfc 123.2 2NM 3900 ASL
CAUTION	Treeline parallels W side of rwy edge by 40'. Ditch running parallel to both sides of rwy at midfield. Numerous tall trees on apch Rwy 36.



ONTARIO

AERODROME / FACILITY DIRECTORY

ORONO / HAWKEFIELD ON

CHF4

REF	N43 59 54 W78 38 54 1.9NW 11°W (2016) UTC-5(4) Elev 620' A5000	
OPR	Hannu Halminen 905-449-1857 Reg PPR	
PF	C-1,2,3,5,7	
FLT PLN		
FIC	London 866-WXBRIEF (Toll free within Canada) or 866-541-4104 (Toll free within Canada & USA)	
SERVICES		
S	1,4	
RWY DATA	Rwy 18(178°)/36(358°) 4250x100 GRASS	
RCR	Opr No win maint	
COMM		
ATF	tfc 123.2 2NM 3700 ASL	
PRO	Rgt hand circuits Rwy 18 (CAR 602.96)	
CAUTION	High tension p-line 130 AGL 0.2NM N of Rwy 18.	