
FLIGHT PLAN & SITE SURVEY

L 4-3833 WHITBY AEROMODELLERS- CENTRAL LAKE
ONTARIO CONSERVATION AUTHORITY

April 29, 2026



IMPORTANT NOTICE

Please ensure you have received all required authorizations prior to flight. This Site Survey was created using RPAS Wilco. The user accepts all responsibility for the accuracy of the information.

Terms & Conditions: rpaswilco.com/#tnc

Mission Information

L 4-3833 WHITBY AEROMODELLERS- CENTRAL LAKE ONTARIO CONSERVATION AUTHORITY

FLIGHT DETAILS

Reference No:	MAAC-4-3833
Project Name:	WHITBY AEROMODELLERS
Pilot Name:	MAAC
Pilot Certificate:	
Mission Type:	VLOS
Flight Start:	April 29, 2026 06:17 PM
Flight End:	April 29, 2026 07:17 PM

LOCATION DETAILS

Flight Address:	CENTRAL LAKE ONTARIO CONSERVATION AUTHORITY
Latitude:	43° 56' 25.35" N (43.94)
Longitude:	78° 58' 56.64" W (-78.982)
Altitude / Radius:	400 ft / 926.0 m (0.5 nm)
Classification:	CONTROLLED
FIR / Contact:	CZYZ / 905-676-4509

NOTES

Your flight is in controlled airspace.
If your RPAS is > 250g, please obtain RPAS Flight Authorization using the NavDrone app or by contacting NavCanada. (CARs 901.71)





REPORT CONTENTS

Site Survey • Obstacles (if available) • Nearby Aerodromes • Canadian Aviation Regulations • GFA • Aerodrome Supplements • METAR & TAF • NOTAMs • CFS

Flight Map & MODEL Details

MISSION LOCATION SURVEY

MISSION LOCATION DETAILS

ROLE	LATITUDE	LONGITUDE
 MODEL	43° 56' 25.35" N 43.94	78° 58' 56.64" W -78.982
 Pilot		
 Payload Op.		
 Observer		

Airspace Classification

MISSION LOCATION SURVEY

AIRSPACE MAP



OVERLYING AIRSPACES

Class	Name	Floor	Ceiling
E	Southern Ontario Low Level Control Area a) [CAE]	2500MSL	6500MSL
E	Southern Ontario Low Level Control Area c) [CAE]	6500MSL	18000MSL
E	Toronto, ON [TSP]	6500MSL	12500MSL
E	T781 Fixed RNAV Route	2200AGL	18000MSL
E	3.4.1-43 [TA]	700AGL	18000MSL
D	Oshawa, ON [CZ]	SFC	3000MSL

NEAREST AERODROMES & DISTANCE FROM OPERATION

OSHAWA EXECUTIVE AIRPORT (CYOO - AERODROME - Cert)	Lat: 43.923	Long: -78.896	7.184KM	3.88NM	E
AJAX (PR AJAX) (CAJ5 - AERODROME/HELIPORT - Reg)	Lat: 43.907	Long: -79.047	6.367KM	3.44NM	SW
UTICA FIELD (CUT2 - AERODROME - Reg)	Lat: 44.066	Long: -79.021	14.306KM	7.72NM	N

ONTARIO

AERODROME / FACILITY DIRECTORY

TORONTO / OSHAWA EXECUTIVE AIRPORT ON

CYOO

REF	N43 55 22 W78 53 47 Adj N 11°W (2015) UTC-5(4) Elev 460' VTA A5000 LO6 T2 CAP	
OPR	Corporation of the City of Oshawa 905-576-8146 11-04Z† O/T PN Cert	
PF	A-2,7 B-6 C-1,3,4,5	
CUST	AOE/50 1330-2130Z† Mon-Fri 888-226-7277; AOE/15 Gen Avn 12-05Z†	
FLT PLN	Pilots to open/close VFR flt pln with London rdo 123.15 or by phone.	
FIG	London 866-WXBRIEF (Toll free within Canada) or 866-541-4104 (Toll free within Canada & USA)	
WX	METAR AUTO H24 (see COMM) TAF H24, issue times: 02, 08, 14 and 20Z WxCam	
SERVICES		
FUEL	100LL (cardlock on Apron I), JA-1	
OIL	All	
S	1,2,3,4,5,6	
PVT ADV	Enterprise Air Inc 131.05 905-721-0054	
RWY DATA	Rwy 12(122°)/30(302°) 5057x100 ASPH Thld 12 displ 254' Thld 30 displ 554' Rwy 05(046°)/23(226°) 2654x100 ASPH Rwy 23 down 0.6%	
RWY CERT	Rwy 12 RVR 1200(1/4sm)/Rwy 30 RVR 1200(1/4sm) AGN IIIA Rwy 05/23 AGN II	
TWY CERT	Twy A AGN I Twy C: AGN I fr Apron V to Twy B & AGN IIIA fr Twy B to Rwy 12/30 & AGN I fr Rwy 12/30 to Rwy 05/23	
TWY	Normal Rwy 30 deps are from Twy B. Acft requiring full length must notify gnd ctl on initial contact. Twy C (north of B): Uncontrolled. Twy E: Rstd for use by piston-engine acft with wingspan of 43' or greater, and all turbojet and turbofan acft regardless of wingspan.	
RCR	Twr 905-576-2398 RSC/CRFI avbl 1130-0330Z† OPR 905-243-9376 RSC/CRFI avbl 0330-1130Z† PCN	
LIGHTING	05-AS(TE ME) P1, 23-(TE ME) P1, 12-AS(TE HI) P2, 30-AS(TE HI) P2 ARCAL-120.1 type K	
COMM		
RCO	London rdo 123.15 (FISE)	
ATIS	125.675 1130-0330Z†	
GND	118.4 1130-0330Z†	
TWR	120.1 (V) 1130-0330Z† (emerg only 905-576-2398)	
MF	tfc 120.1 0330-1130Z† 5NM 3000 ASL (CAR 602.98)	
ARR	Toronto tml 133.4	
DEP	Toronto tml 133.4	
AWOS	125.675 0330-1130Z†	

ONTARIO

AERODROME / FACILITY DIRECTORY

TORONTO / OSHAWA EXECUTIVE AIRPORT ON (Cont'd)

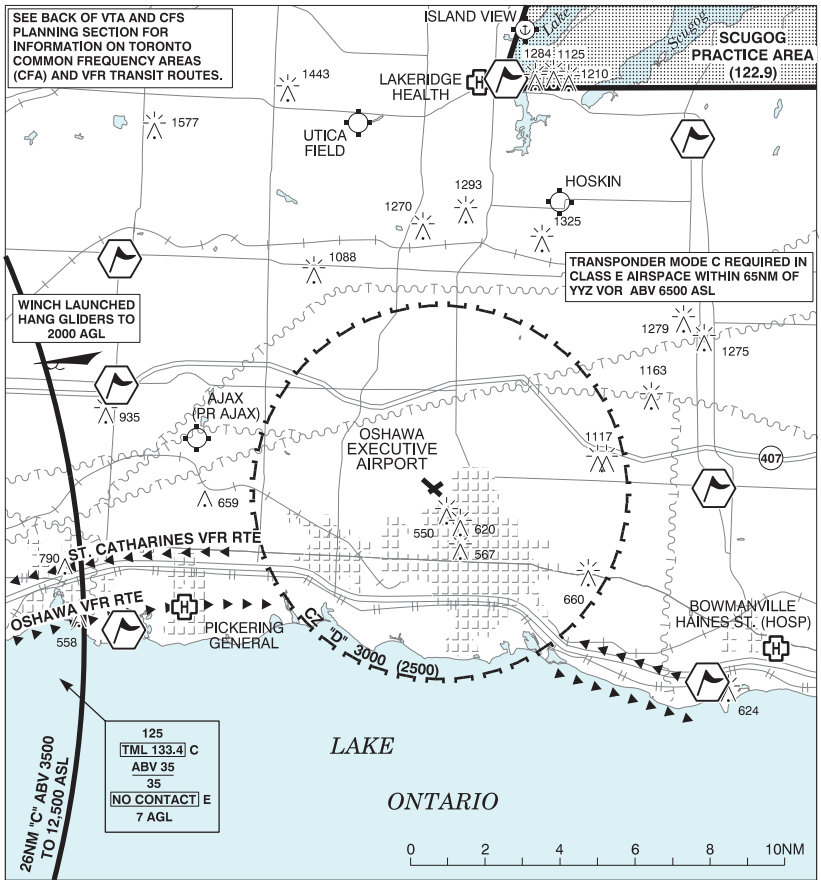
CYOO

PRO	Rgt hand circuits Rwy 23 & 30 (CAR 602.96). On dep no turns below 1000 ASL. Arr turns to final apch will be made at or above 1000 ASL. Fits proh btwn 2230 & 0630 lcl unless appr by APM. Ctc opr for details. Pilots are requested to maintain 2000 ASL or above over Metropolitan Toronto Zoo (N43 49 05 W79 11 15). Tng fit prohibited at all times unless approved by APM. Ctc OPR for details.
CAUTION	Winch launched hang gliders, cable up to 2000 AGL fr N43 55 W79 08 aprx 11NM W of A/D. Wildlife frequently on rwys.

ONTARIO

AERODROME / FACILITY DIRECTORY

TORONTO / OSHAWA EXECUTIVE AIRPORT VFR TERMINAL PROCEDURES CHART



NAME	IDENT	LAT/LONG
BLACKSTOCK	VCBLS	N44° 06' 34" W78° 49' 18"
BROUGHAM	VCBRH	N43° 55' 07" W79° 06' 23"
CLAREMONT	VCCLM	N43° 58' 19" W79° 07' 49"
HAMPTON	VCHMP	N43° 57' 57" W78° 44' 13"
PICKERING NUCLEAR POWER STATION	VCPKR	N43° 49' 00" W79° 03' 00"
PORT PERRY	VCPRY	N44° 06' 00" W78° 56' 42"
ST. MARY'S CEMENT	VCSMC	N43° 53' 00" W78° 42' 00"

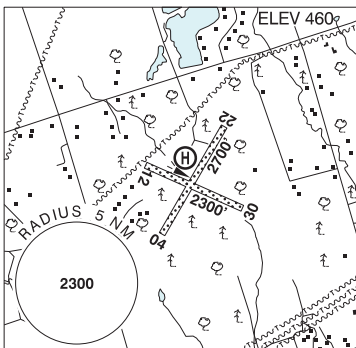
ONTARIO

AERODROME / FACILITY DIRECTORY

AJAX (PR AJAX) ON

CAJ5

REF	N43 54 24 W79 02 50 Adj N 10°W (2024) UTC-5(4) Elev 460' A1900 A5000
OPR	1000363870 Ontario Inc. 416-605-3391 Reg PPR
FLT PLN	FIC London 866-WXBRIEF (Toll free within Canada) or 866-541-4104 (Toll free within Canada & USA)
RWY DATA	Rwy 04(040°)/22(220°) 2700x75 GRASS Rwy 12(124°)/30(304°) 2300x75 GRASS
RCR	Opr
HELI DATA	FATO/TLOF 56' x 40' CONC Safety Area 76' x 50' Max heli overall length 39'
COMM	ATF tfc 123.2 5NM 3500 ASL excluding Oshawa CZ
PRO	Heli arr/dep via runways, taxi to/fr helipad.
CAUTION	Unmarked p-lines aprx 100 AGL 200' NW Thld 12.



ONTARIO

AERODROME / FACILITY DIRECTORY

PORT PERRY / UTICA FIELD ON

CUT2

REF	N44 03 58 W79 01 15 4.1WSW 11°W (2016) UTC-5(4) Elev 920' VTA A5000
OPR	Arnold Kerry 905-985-7792 Reg PPR
PF	C-1,2,4 D-3,5,6,7,8
FLT PLN	
FIC	London 866-WXBRIEF (Toll free within Canada) or 866-541-4104 (Toll free within Canada & USA)
RWY DATA	Rwy 08(075°)/26(255°) 1968x75 GRASS Rwy 08 down 1.68%
RCR	Opr No maint
COMM	
ATF	tfc 123.2 2NM 4000 ASL excluding Greenbank (CNP8) ATF area

