
FLIGHT PLAN & SITE SURVEY

L 552-5345 YOUNGS POINT RADIO CONTROL FLYING
CLUB- RIVERVIEW PARK AND ZOO MEETING ROOM

April 29, 2026



IMPORTANT NOTICE

Please ensure you have received all required authorizations prior to flight. This Site Survey was created using RPAS Wilco. The user accepts all responsibility for the accuracy of the information.

Terms & Conditions: rpaswilco.com/#tnc

Mission Information

L 552-5345 YOUNGS POINT RADIO CONTROL FLYING CLUB- RIVERVIEW PARK AND ZOO MEETING ROOM

FLIGHT DETAILS

Reference No:	MAAC-552-5345
Project Name:	YOUNGS POINT RADIO CONTROL FLYING CLUB
Pilot Name:	MAAC
Pilot Certificate:	
Mission Type:	VLOS
Flight Start:	April 29, 2026 07:16 PM
Flight End:	April 29, 2026 08:16 PM

LOCATION DETAILS

Flight Address:	RIVERVIEW PARK AND ZOO MEETING ROOM
Latitude:	44° 20' 39.48" N (44.344)
Longitude:	78° 18' 33.12" W (-78.309)
Altitude / Radius:	400 ft / 926.0 m (0.5 nm)
Classification:	UNCONTROLLED
FIR / Contact:	CZYZ / 905-676-4509





REPORT CONTENTS

Site Survey • Obstacles (if available) • Nearby Aerodromes • Canadian Aviation Regulations • GFA • Aerodrome Supplements • METAR & TAF • NOTAMs • CFS

Flight Map & MODEL Details

MISSION LOCATION SURVEY

MISSION LOCATION DETAILS

ROLE	LATITUDE	LONGITUDE
 MODEL	44° 20' 39.48" N 44.344	78° 18' 33.12" W -78.309
 Pilot		
 Payload Op.		
 Observer		

Airspace Classification

MISSION LOCATION SURVEY

AIRSPACE MAP



OVERLYING AIRSPACES

Class	Name	Floor	Ceiling
E	Southern Ontario Low Level Control Area a) [CAE]	2500MSL	6500MSL
E	Peterborough, ON [TA]	700AGL	18000MSL
E	Southern Ontario Low Level Control Area d) [CAE]	6500MSL	18000MSL
E	T614 Fixed RNAV Route	2200AGL	18000MSL

NEAREST AERODROMES & DISTANCE FROM OPERATION

PETERBOROUGH (REG HEALTH CENTRE) (CNU3 - HELIPORT - Reg)	Lat: 44.301	Long: -78.346	5.635KM	3.04NM	SW
PETERBOROUGH (CYPQ - AERODROME - Cert)	Lat: 44.23	Long: -78.363	13.412KM	7.24NM	S
ELMHIRST'S RESORT (CPS2 - AERODROME - Reg)	Lat: 44.252	Long: -78.106	19.153KM	10.34NM	SE

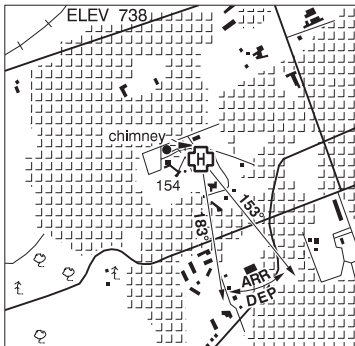
ONTARIO

AERODROME / FACILITY DIRECTORY

PETERBOROUGH (REG HEALTH CENTRE) ON (Heli)

CNU3

REF	N44 18 02 W78 20 45 Adj W 12°W UTC-5(4) Elev 738' A5000
OPR	Peterborough Regional Health Centre 705-743-2121 Cert PPR
FLT PLN	FIC London 866-WXBRIEF (Toll free within Canada) or 866-541-4104 (Toll free within Canada & USA)
HELI DATA	RCR FATO/TLOF 90' dia CONC Safety Area 120' dia Max heli overall length 60' Opr
LIGHTING	RY(LO) Green RF(FL) ARCAL 123.0 key mic 7 times to activate
PRO	Arr/dep 153° to 183° fr heli, slope 8% (H3) day/night use.
CAUTION	Lgtd and painted twr 891 ASL (154 AGL) aprx 350' W of A/D



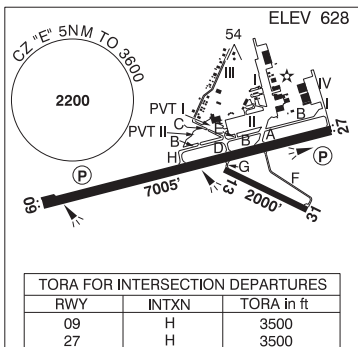
ONTARIO

AERODROME / FACILITY DIRECTORY

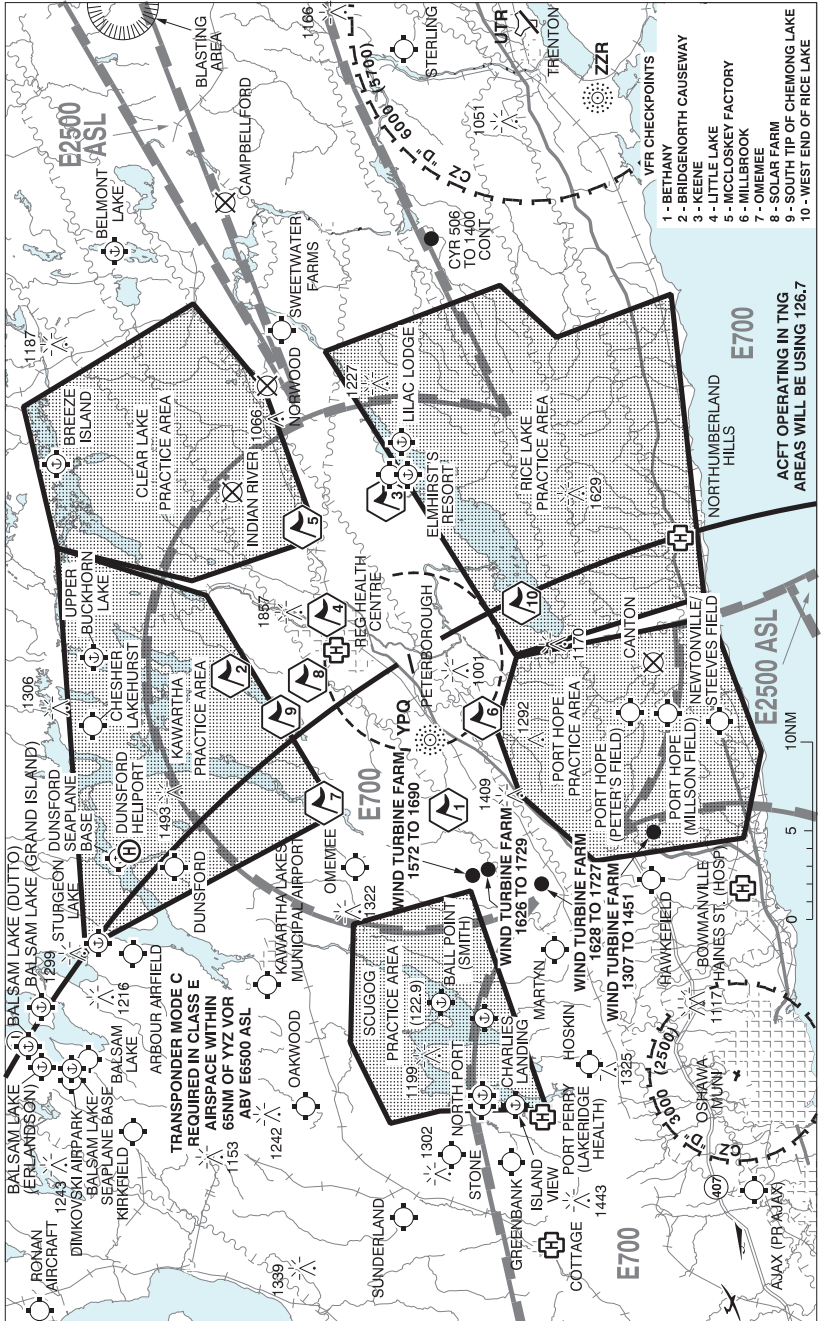
PETERBOROUGH ON

CYPQ

REF	N44 13 50 W78 21 47 3SSW 12°W UTC-5(4) Elev 628' A5000 LO6 HI5 CAP
OPR	City of Peterborough 705-743-6708 12-23Z† Oct 01-Mar 31, 12-01Z† Apr 01-Sep 30 Cert
PF	A-1,7 After hrs airside tml access code 2977*. After hrs groundside tml access code 2977#. A-2 01-20Z† Tue-Sun B-8 C-2,3,4,5,6
CUST	AOE/15 1330-2130Z† Mon-Fri exc hols 888-226-7277 PN
FLT PLN	
FIC	London 866-WXBRIEF (Toll free within Canada) or 866-541-4104 (Toll free within Canada & USA)
WX	METAR AUTO H24 (see COMM). TAF 11-03Z†, issue times: 11,14, 20Z (DT 10, 14, 20Z) WxCam
SERVICES	12-01Z† Apr-Sep, 12-23Z† Oct-Mar. Stay late or callout on request. After hrs callout chg may apply. Call 705-745-8626.
FUEL	100LL, JA-1 (FSII avbl)
OIL	All
S	1,2,3,4,5,6
SUP FL	D & A-ice
JASU	CE13
MILCON	Stewart Aviation (World Fuel Services) 705-745-8626
RWY DATA	Rwy 09(088°)/27(268°) 7005x100 ASPH Rwy 13(128°)/31(308°) 2000x49 ASPH Day use only
RWY CERT	Rwy 09/27 AGN IIIB Rwy 13/31 AGN I
TWY CERT	Twy: C, F, G AGN I
TWY	Twy B holding bay rstd to acft wingspans less than 79'. Twy C rstd to 11,800 lbs or less. Twy F & G day use only.
APRON	Pvt Apron II (Adj B & C) rstd to 3000 lbs or less
RCR	Opr Win maint 12-23Z† O/T 3 hrs PN CRFI/RSC avbl ltd hrs PCN
LIGHTING	09-AS(TE ME) P2, 27-AS(TE ME) P2 ARCAL-123.0 type K
COMM	
MF	UNICOM ltd hrs O/T tfc 123.0 5NM 3600 ASL
PAL	Toronto Ctr 134.25
AWOS	126.925 (YPQ)
NAV	
NDB	YPQ 379 (L) N44 12 45 W78 27 47
PRO	PPR for cont circuits on Rwy 13/31. Extv flt tng within 25NM of A/D, all quadrants to 6000' ASL. (See VTFC).
NOISE	Noise Operating Criteria (CAR 602.105): Rwy 09/27 VFR tkof/climb, no turns below 1000 AAE. Avoid overflight of noise sensitive areas while joining/departing circuit ctc opr for details.
CAUTION	Wildlife frequently on rwys. Lgtd twr 775 ASL (122 AGL) aprx 0.75NM WNW of Thld 09. Trees 42 AGL 807' before Thld 31. Extv bird activity at landfill 3NM ESE of Thld 27. Trees 85 AGL 3900' before Thld 27 and 450' N of extended rwy centreline.



PETERBOROUGH VFR TERMINAL PROCEDURES CHART



ONTARIO

AERODROME / FACILITY DIRECTORY

PETERBOROUGH VFR TERMINAL PROCEDURES CHART (Cont'd)

NAME	IDENT	LAT/LONG
BETHANY	VCBNY	N44° 10' 57" W078° 34' 03"
BRIDGENORTH CAUSEWAY	VCBGN	N44° 23' 14" W078° 23' 33"
KEENE	VCKNE	N44° 14' 28" W078° 09' 44"
LITTLE LAKE	VCLTL	N44° 17' 48" W078° 18' 45"
MCCLOSKEY FACTORY	VCLSK	N44° 19' 11" W078° 11' 52"
MILLBROOK	VCMLB	N44° 09' 02" W078° 26' 51"
OMEMEE	VCMEE	N44° 17' 57" W078° 33' 31"
SOLAR FARM	VCSOL	N44° 18' 54" W078° 23' 54"
SOUTH TIP OF CHEMONG LAKE	VCHMG	N44° 20' 24" W078° 26' 46"
WEST END OF RICE LAKE	VCRCE	N44° 06' 50" W078° 17' 51"

ONTARIO

AERODROME / FACILITY DIRECTORY

KEENE / ELMHIRST'S RESORT ON

CPS2

REF	N44 15 07 W78 06 23 3E 12°W UTC-5(4) Elev 650' A5000	
OPR	Elmhirst's Resort (Keene) Ltd 705-295-4591 Reg PPR	
PF	A-1,2,5,7,8 C-4 D-3,6	
FLT PLN		
FIC	London 866-WXBRIEF (Toll free within Canada) or 866-541-4104 (Toll free within Canada & USA)	
RWY DATA	Rwy 06/24 2800x50 GRASS	
RCR	Opr Ltd win maint	
COMM		
ATF	UNICOM ltd hrs O/T tfc 122.8 5NM 3700 ASL	
PRO	Seaplane activity at adj base. Rwy rises fr both thlds, one thld not vis fr opposite thld.	