
FLIGHT PLAN & SITE SURVEY

M 149-4121 SUN PARLOR R/C INC.- TOWER FIELD 4819
CON #4 AMHERSTBURG ON

April 29, 2026



IMPORTANT NOTICE

Please ensure you have received all required authorizations prior to flight. This Site Survey was created using RPAS Wilco. The user accepts all responsibility for the accuracy of the information.

Terms & Conditions: rpaswilco.com/#tnc

Mission Information

M 149-4121 SUN PARLOR R/C INC. - TOWER FIELD 4819 CON #4 AMHERSTBURG ON

FLIGHT DETAILS

Reference No:	MAAC-149-4121
Project Name:	SUN PARLOR R/C INC.
Pilot Name:	MAAC
Pilot Certificate:	
Mission Type:	VLOS
Flight Start:	April 29, 2026 06:25 PM
Flight End:	April 29, 2026 07:25 PM

LOCATION DETAILS

Flight Address:	TOWER FIELD 4819 CON #4 AMHERSTBURG ON
Latitude:	42° 10' 12.39" N (42.17)
Longitude:	83° 2' 48.12" W (-83.047)
Altitude / Radius:	400 ft / 926.0 m (0.5 nm)
Classification:	UNCONTROLLED
FIR / Contact:	CZYZ / 905-676-4509





REPORT CONTENTS

Site Survey • Obstacles (if available) • Nearby Aerodromes • Canadian Aviation Regulations • GFA • Aerodrome Supplements • METAR & TAF • NOTAMs • CFS

Flight Map & MODEL Details

MISSION LOCATION SURVEY

MISSION LOCATION DETAILS

ROLE	LATITUDE	LONGITUDE
 MODEL	42° 10' 12.39" N 42.17	83° 2' 48.12" W -83.047
 Pilot		
 Payload Op.		
 Observer		

Airspace Classification

MISSION LOCATION SURVEY

AIRSPACE MAP



OVERLYING AIRSPACES

No Airspace Info Available

NEAREST AERODROMES & DISTANCE FROM OPERATION

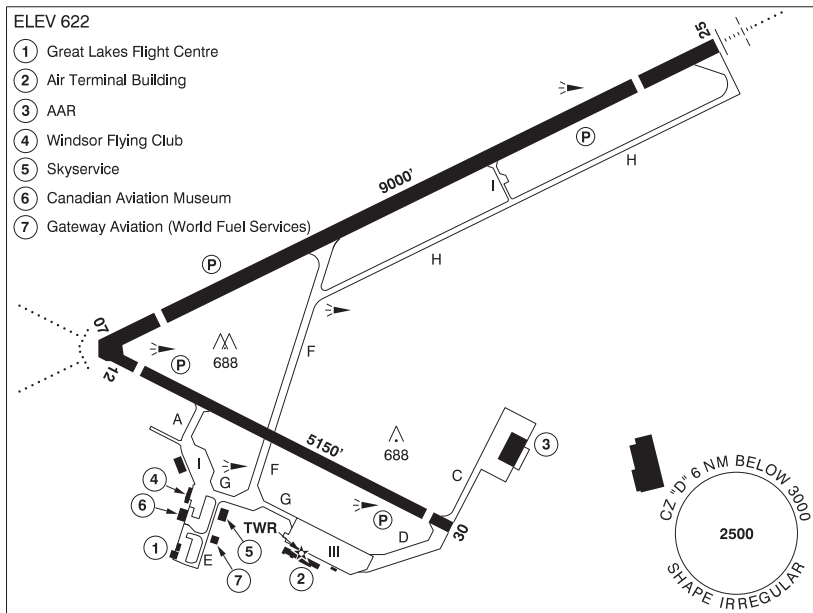
WINDSOR (CYQG - AERODROME - Cert)	Lat: 42.276	Long: -82.955	13.988KM	7.55NM	NE
ESSEX (CNE9 - AERODROME - Reg)	Lat: 42.096	Long: -82.879	16.098KM	8.69NM	SE
HARROW (CGL2 - AERODROME - Reg)	Lat: 42.059	Long: -82.841	20.989KM	11.33NM	SE

ONTARIO

AERODROME / FACILITY DIRECTORY

WINDSOR ON

CYQG



REF	N42 16 34 W82 57 19 Adj SE 7°W (2011) UTC-5(4) Elev 622' A5000 LO6 HI5 T2 CAP
OPR	Your Quick Gateway (Windsor) Inc. 519-969-2430 10-02Z± Cert
PF	A-2,3,6,7,8 C-4,5
CUST	AOE/325 (450 with staged off loading) 888-226-7277 13-05Z±
FLT PLN	Pilots to open/ close VFR flt plan with London rdo 123.375 or by phone. For altn method to file, close & rcv IFR Flt Pln/clnc see PRO
FIC	London 866-WXBRIEF (Toll free within Canada) or 866-541-4104 (Toll free within Canada & USA)
WX	METAR AUTO H24 (See COMM). TAF H24, issue times: 00, 06, 12, 18Z, WxCam.
SERVICES	Call out chg may be levied for one or more svcs.
FUEL	100LL, JA-1 FSII (avbl), HPR
OIL	All
S	1,2,3,4,5,6
ARFF	PARTICIPATING CAT 5 1030-0315Z±, O/T call out chgs may be levied.
SUP FL	D-ice
JASU	NC-10A/A1/B/C; DC:2000 AMP, 45kW, 28V; AC:90 KVA, 115/200V, 3 phase, 400 Hz.
PVT ADV	Great Lakes Flight Centre 122.95 519-969-7052 and 866-817-5266 Fax 519-969-3205 Air-Way Aviation 129.55 519-972-7244 Fax 519-972-7744 Gateway Aviation (World Aviation Services) 123.5 226-782-3581
MIL CON	Gateway Aviation Windsor 226-782-3581

ONTARIO

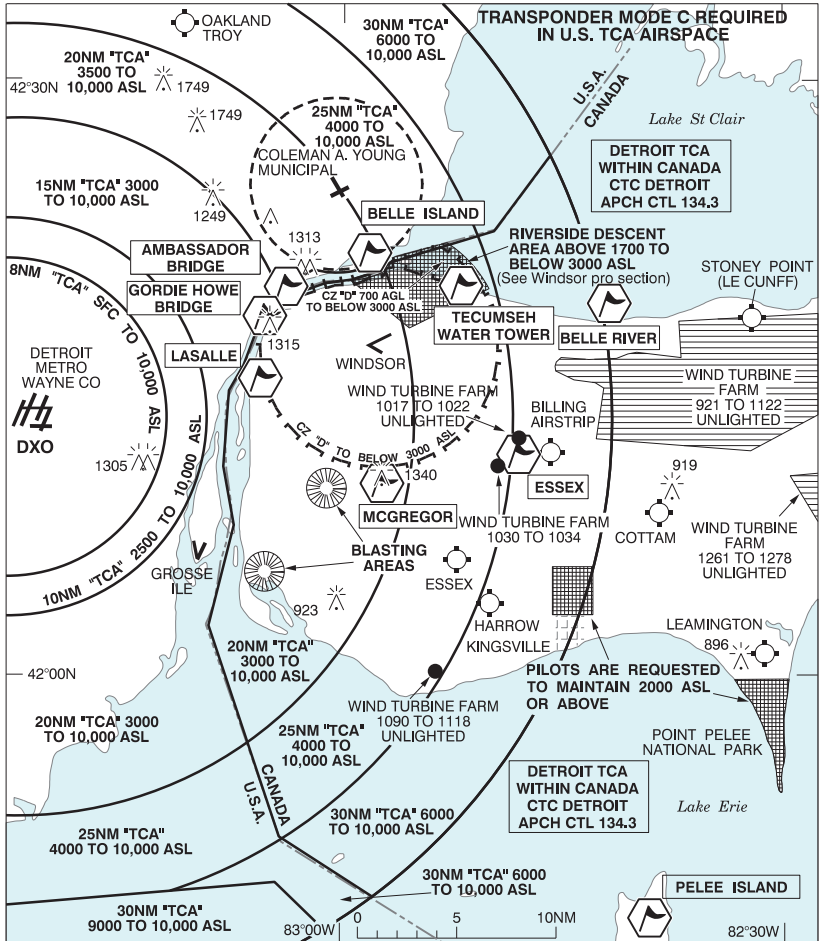
AERODROME / FACILITY DIRECTORY

WINDSOR ON (Cont'd)

CYQG

RWY DATA	Rwy 07(070°)/25(250°) 9000x200 ASPH Thld 07 displ 902'. Thld 25 displ 1143' Rwy 12(123°)/30(303°) 5150x150 ASPH Thld 12 displ 570'. Thld 30 displ 321'
RWY CERT	Rwy 07 RVR 1200(1/4sm)/Rwy 25 RVR 1200(1/4sm) AGN IV Rwy 12/30 AGN IIIB
TWY CERT	Twy: E AGN II Twy: I AGN IIIA
TWY RCR	Twy E uncontrolled. Twy I width 50'. 519-791-1663 10-05Z† CRFI Hrs extended as conds or usage warrant. PCN
LIGHTING	07-AD AS(TE HI) P2, 25-AN(TE HI) P2, 12-AD(TE ME) P2, 30-(TE ME) P2 ARCAL-124.7 type K when TWR clsd
COMM	
RCO	London rdo 123.375 (FISE) 126.7(bcst)
ATIS	134.5 12-03Z†
GND	121.7 12-03Z†
TWR	124.7 (E) 12-03Z† (emerg only 519-969-3751)
MF	tfc 124.7 03-12Z† 6NM shape irregular to below 3000 ASL (CAR 602.98)
ARR/DEP	Detroit 118.95 132.35 134.3 284.0 (E)
VFR ADV	Windsor Area-Detroit Apch Ctl 134.3
AWOS	134.5 03-12Z†
NAV	
DME	IQG 110.3 Ch 40 N42 16 52 W82 56 49 (633')
ILS	IQG 110.3 (Rwy 25)
PRO	When oprg VFR over Canadian Territory within the Detroit TCA (see VTPC) ctc Detroit apch ctl 134.3. Avoid Riverside descent area unless authorized by ATC. (Acft departing the Windsor area northbound or enroute to Detroit should remain W of Belle Isle or E of the Windsor class E airspace.) IFR tfc inbound Detroit City Airport Rwy 33 descending within the Riverside Descent Area from 3000 ASL. To file, close & rcv IFR Flt Pln/clnc when oprg in the Detroit TCA, ctc London FIC on 123.375 or by phone 1-866-541-4104. Pilots are requested to avoid flight below 2000 ASL when flying over the Jack Miner Bird Sanctuary (Kingsville ON, N42 04 00 W82 45 00) & over Point Pelee National Park.
CAUTION	Blasting areas may be active Mon-Fri 13-22Z† 1NM radius of N42 09 19 W83 00 21 and N42 05 21 W83 05 06 to 500 AGL. Migratory birds in vic of aprt Mar - May & Oct - Nov.

WINDSOR / DETROIT VFR TERMINAL PROCEDURES CHART



ONTARIO

AERODROME / FACILITY DIRECTORY

WINDSOR / DETROIT VFR TERMINAL PROCEDURES CHART

NAME	IDENT	LAT/LONG
AMBASSADOR BRIDGE	VCAMB	N42° 18' 43" W083° 04' 26"
BELLE ISLAND	VCBLL	N42° 20' 24" W082° 58' 46"
BELLE RIVER	VCBER	N42° 17' 51" W082° 42' 35"
ESSEX	VCESS	N42° 10' 17" W082° 48' 44"
GORDIE HOWE BRIDGE	VCGHB	N42° 17' 15" W083° 05' 52"
LASALLE	VCLAS	N42° 14' 07" W083° 06' 10"
MCGREGOR	VCMCR	N42° 08' 50" W082° 57' 57"
PELEE ISLAND	VCPLE	N41° 47' 00" W082° 40' 00"
TECUMSEH WATER TOWER	VCTWT	N42° 18' 45" W082° 52' 36"

NOTE: Airspace classification and operational requirements may differ between Canada and USA. Users should consult applicable American charts and publications as required.

Canadian Class "C" rules apply to the portion of the Detroit TCA within Canada. For more information, see PLANNING - CHARACTERISTICS OF AIRSPACE.

ONTARIO

AERODROME / FACILITY DIRECTORY

ESSEX ON

CNE9

REF	N42 05 45 W82 52 46 4SW 7°W UTC-5(4) Elev 620' A5000	
OPR	P. & A. Harrington 519-776-7441 Reg	
PF	C-1,2,3,5 D-4,6	
FLT PLN	FIC London 866-WXBRIEF (Toll free within Canada) or 866-541-4104 (Toll free within Canada & USA)	
SERVICES	S 2,3,5	
RWY DATA	Rwy 09/27 1935x70 GRASS	
TWY	Twy at hg entrance only.	
RCR	No win maint. A/D clsd in hvy rain periods. Call ahead to confirm rwy has dried up enough to land on.	
COMM	ATF tfc 122.8 5NM 3600 ASL	
PRO	Pilots are requested to avoid flight below 2000 ASL when flying over the Jack Miner Bird Sanctuary (Kingsville, Ont N42 04 00 W82 45 00) & over Point Pelee National Park.	
CAUTION	Ditches at Thlds 09 & 27 and along rwy sides. Wind shear fr hg with N/NE/NW winds. Trees on apch to Rwy 27. Bldg at edge of Rwy 09/27.	

ONTARIO

AERODROME / FACILITY DIRECTORY

HARROW ON

CGL2

REF	N42 03 34 W82 50 27 3.8ENE 7°W UTC-5(4) Elev 610' A5000	<p>The chart shows a 5NM radius circle centered on a 2200 ASL elevation. A runway is shown with a 3000' length. A 610' elevation point is marked. The chart also shows various terrain features and symbols.</p>
OPR	Louis & Thérèse Levesque 519-733-2935 Reg PN	
PF	C-1,2 E-3,4,5,6	
FLT PLN	FIC London 866-WXBRIEF (Toll free within Canada) or 866-541-4104 (Toll free within Canada & USA)	
RWY DATA	Rwy 01/19 3000x100 GRASS Thlds 01 & 19 displ 400'. Rwy soft when wet.	
RCR	Opr Ltd win maint	
COMM	ATF tfc 122.9 5NM 3600 ASL	
PRO	Pilots are requested to avoid flt below 2000 ASL when flying over the Jack Miner Bird Sanctuary (Kingsville, Ontario N42 04 W82 45) & over Point Pelee National Park.	
CAUTION	Trees 500' fr Thld Rwy 01, 60 AGL. Marked hydro poles 400' fr Thld Rwy 19 (buried hydro line). Essex A/D 3NM NW.	