

---

# FLIGHT PLAN & SITE SURVEY

---

M 149-4124 SUN PARLOR R/C INC.- DEVONSHIRE MALL  
3100 HOWARD AVE. WINDSOR

April 29, 2026



**IMPORTANT NOTICE**

Please ensure you have received all required authorizations prior to flight. This Site Survey was created using RPAS Wilco. The user accepts all responsibility for the accuracy of the information.

Terms & Conditions: [rpaswilco.com/#tnc](https://rpaswilco.com/#tnc)

# Mission Information

M 149-4124 SUN PARLOR R/C INC. - DEVONSHIRE MALL 3100 HOWARD AVE. WINDSOR

## FLIGHT DETAILS

Reference No:	<b>MAAC-149-4124</b>
Project Name:	<b>SUN PARLOR R/C INC.</b>
Pilot Name:	<b>MAAC</b>
Pilot Certificate:	
Mission Type:	<b>VLOS</b>
Flight Start:	<b>April 29, 2026 06:25 PM</b>
Flight End:	<b>April 29, 2026 07:25 PM</b>

## LOCATION DETAILS

Flight Address:	<b>DEVONSHIRE MALL 3100 HOWARD AVE. WINDSOR</b>
Latitude:	<b>42° 16' 28.81" N ( 42.275 )</b>
Longitude:	<b>83° 0' 12.82" W ( -83.004 )</b>
Altitude / Radius:	<b>400 ft / 926.0 m ( 0.5 nm)</b>
Classification:	<b>CONTROLLED</b>
FIR / Contact:	<b>CZYZ / 905-676-4509</b>

### NOTES

Your flight is in controlled airspace.  
If your RPAS is > 250g, please obtain RPAS Flight Authorization using the NavDrone app or by contacting NavCanada. (CARs 901.71)





## REPORT CONTENTS

Site Survey • Obstacles (if available) • Nearby Aerodromes • Canadian Aviation Regulations • GFA • Aerodrome Supplements • METAR & TAF • NOTAMs • CFS

# Flight Map & MODEL Details

MISSION LOCATION SURVEY

## MISSION LOCATION DETAILS

ROLE	LATITUDE	LONGITUDE
 MODEL	42° 16' 28.81" N 42.275	83° 0' 12.82" W -83.004
 Pilot		
 Payload Op.		
 Observer		

# Airspace Classification

MISSION LOCATION SURVEY

## AIRSPACE MAP



## OVERLYING AIRSPACES

Class	Name	Floor	Ceiling
D	Windsor, ON a) [CZ]	SFC	700GND
D	Windsor, ON b) [CZ]	700AGL	3000MSL

## NEAREST AERODROMES & DISTANCE FROM OPERATION

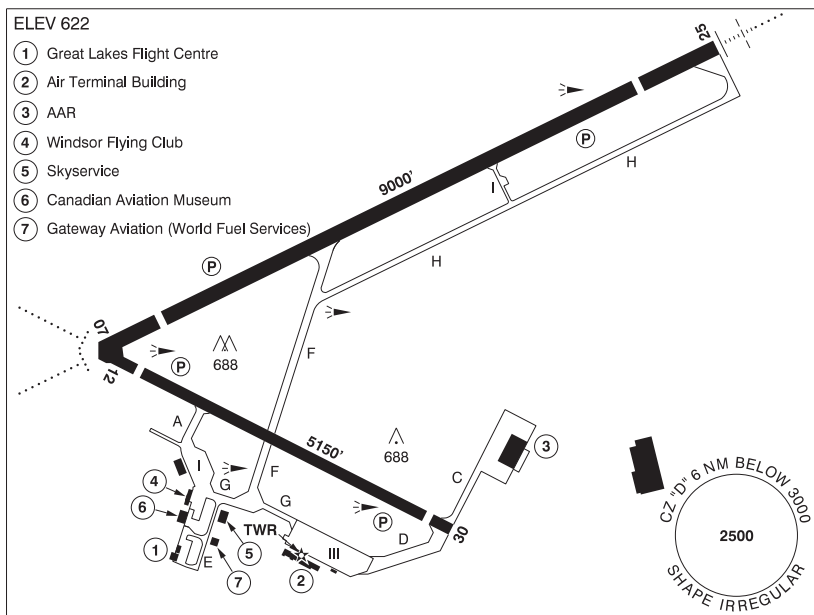
WINDSOR (CYQG - AERODROME - Cert)	Lat: 42.276	Long: -82.955	3.998KM	2.16NM	E
BILLING AIRSTRIP (CEB8 - AERODROME - Reg)	Lat: 42.187	Long: -82.782	20.683KM	11.17NM	SE
ESSEX (CNE9 - AERODROME - Reg)	Lat: 42.096	Long: -82.879	22.361KM	12.07NM	SE

ONTARIO

AERODROME / FACILITY DIRECTORY

WINDSOR ON

CYQG



<b>REF</b>	N42 16 34 W82 57 19 Adj SE 7°W (2011) UTC-5(4) Elev 622' A5000 LO6 HI5 T2 CAP
<b>OPR</b>	Your Quick Gateway (Windsor) Inc. 519-969-2430 10-02Z‡ Cert
<b>PF</b>	A-2,3,6,7,8 C-4,5
<b>CUST</b>	AOE/325 (450 with staged off loading) 888-226-7277 13-05Z‡
<b>FLT PLN</b>	Pilots to open/ close VFR flt plan with London rdo 123.375 or by phone. For altn method to file, close & rcv IFR Flt Pln/clnc see PRO
<b>FIC</b>	London 866-WXBRIEF (Toll free within Canada) or 866-541-4104 (Toll free within Canada & USA)
<b>WX</b>	METAR AUTO H24 (See COMM). TAF H24, issue times: 00, 06, 12, 18Z, WxCam.
<b>SERVICES</b>	Call out chg may be levied for one or more svcs.
<b>FUEL</b>	100LL, JA-1 FSII (avbl), HPR
<b>OIL</b>	All
<b>S</b>	1,2,3,4,5,6
<b>ARFF</b>	PARTICIPATING CAT 5 1030-0315Z‡, O/T call out chgs may be levied.
<b>SUP FL</b>	D-ice
<b>JASU</b>	NC-10A/A1/B/C; DC:2000 AMP, 45kW, 28V; AC:90 KVA, 115/200V, 3 phase, 400 Hz.
<b>PVT ADV</b>	Great Lakes Flight Centre 122.95 519-969-7052 and 866-817-5266 Fax 519-969-3205 Air-Way Aviation 129.55 519-972-7244 Fax 519-972-7744 Gateway Aviation (World Aviation Services) 123.5 226-782-3581
<b>MIL CON</b>	Gateway Aviation Windsor 226-782-3581

## ONTARIO

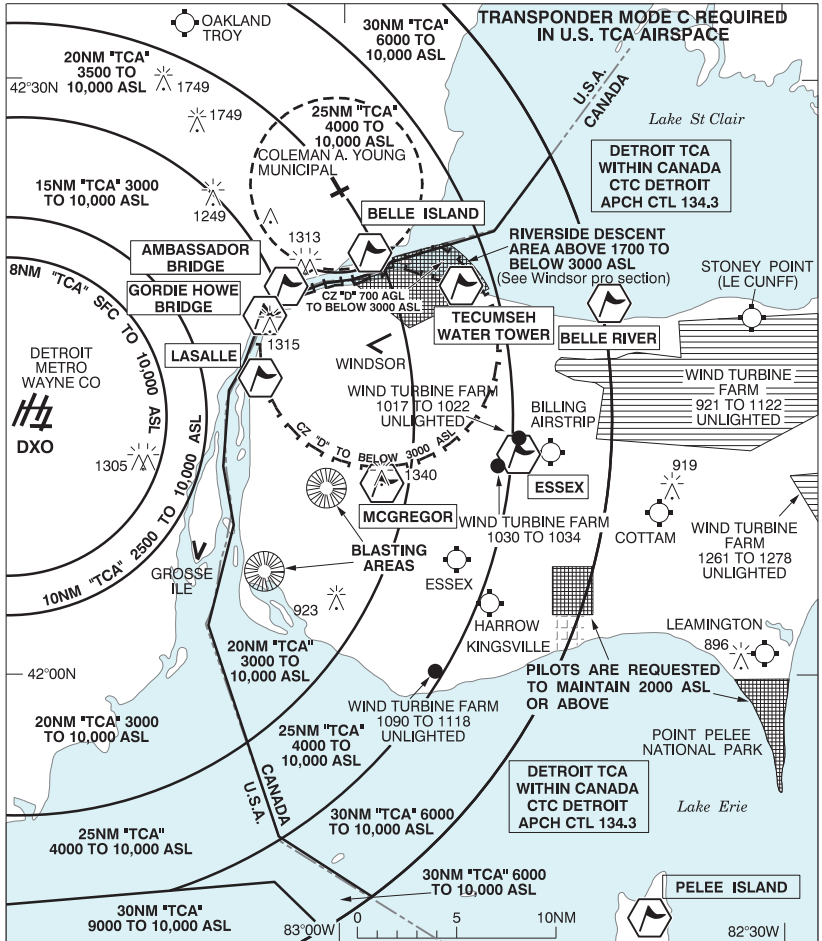
## AERODROME / FACILITY DIRECTORY

## WINDSOR ON (Cont'd)

CYQG

<b>RWY DATA</b>	Rwy 07(070°)/25(250°) 9000x200 ASPH Thld 07 displ 902'. Thld 25 displ 1143' Rwy 12(123°)/30(303°) 5150x150 ASPH Thld 12 displ 570'. Thld 30 displ 321'
<b>RWY CERT</b>	Rwy 07 RVR 1200(1/4sm)/Rwy 25 RVR 1200(1/4sm) AGN IV Rwy 12/30 AGN IIIB
<b>TWY CERT</b>	Twy: E AGN II Twy: I AGN IIIA
<b>TWY RCR</b>	Twy E uncontrolled. Twy I width 50'. 519-791-1663 10-05Z† CRFI Hrs extended as conds or usage warrant. PCN
<b>LIGHTING</b>	07-AD AS(TE HI) P2, 25-AN(TE HI) P2, 12-AD(TE ME) P2, 30-(TE ME) P2 ARCAL-124.7 type K when TWR clsd
<b>COMM</b>	
<b>RCO</b>	London rdo 123.375 (FISE) 126.7(bcst)
<b>ATIS</b>	134.5 12-03Z†
<b>GND</b>	121.7 12-03Z†
<b>TWR</b>	124.7 (E) 12-03Z† (emerg only 519-969-3751)
<b>MF</b>	tfc 124.7 03-12Z† 6NM shape irregular to below 3000 ASL (CAR 602.98)
<b>ARR/DEP</b>	Detroit 118.95 132.35 134.3 284.0 (E)
<b>VFR ADV</b>	Windsor Area-Detroit Apch Ctl 134.3
<b>AWOS</b>	134.5 03-12Z†
<b>NAV</b>	
<b>DME</b>	IQG 110.3 Ch 40 N42 16 52 W82 56 49 (633')
<b>ILS</b>	IQG 110.3 (Rwy 25)
<b>PRO</b>	When oprg VFR over Canadian Territory within the Detroit TCA (see VTPC) ctc Detroit apch ctl 134.3. Avoid Riverside descent area unless authorized by ATC. (Acft departing the Windsor area northbound or enroute to Detroit should remain W of Belle Isle or E of the Windsor class E airspace.) IFR t/c inbound Detroit City Airport Rwy 33 descending within the Riverside Descent Area from 3000 ASL. To file, close & rcv IFR Flt Pln/clnc when oprg in the Detroit TCA, ctc London FIC on 123.375 or by phone 1-866-541-4104. Pilots are requested to avoid flight below 2000 ASL when flying over the Jack Miner Bird Sanctuary (Kingsville ON, N42 04 00 W82 45 00) & over Point Pelee National Park.
<b>CAUTION</b>	Blasting areas may be active Mon-Fri 13-22Z† 1NM radius of N42 09 19 W83 00 21 and N42 05 21 W83 05 06 to 500 AGL. Migratory birds in vic of aprt Mar - May & Oct - Nov.

**WINDSOR / DETROIT VFR TERMINAL PROCEDURES CHART**



## ONTARIO

## AERODROME / FACILITY DIRECTORY

**WINDSOR / DETROIT VFR TERMINAL PROCEDURES CHART**

<b>NAME</b>	<b>IDENT</b>	<b>LAT/LONG</b>
AMBASSADOR BRIDGE	VCAMB	N42° 18' 43" W083° 04' 26"
BELLE ISLAND	VCBLL	N42° 20' 24" W082° 58' 46"
BELLE RIVER	VCBER	N42° 17' 51" W082° 42' 35"
ESSEX	VCESS	N42° 10' 17" W082° 48' 44"
GORDIE HOWE BRIDGE	VCGHB	N42° 17' 15" W083° 05' 52"
LASALLE	VCLAS	N42° 14' 07" W083° 06' 10"
MCGREGOR	VCMCR	N42° 08' 50" W082° 57' 57"
PELEE ISLAND	VCPLE	N41° 47' 00" W082° 40' 00"
TECUMSEH WATER TOWER	VCTWT	N42° 18' 45" W082° 52' 36"

NOTE: Airspace classification and operational requirements may differ between Canada and USA. Users should consult applicable American charts and publications as required.

Canadian Class "C" rules apply to the portion of the Detroit TCA within Canada. For more information, see PLANNING - CHARACTERISTICS OF AIRSPACE.

## ONTARIO

## AERODROME / FACILITY DIRECTORY

## ESSEX / BILLING AIRSTRIP ON

CEB8

<b>REF</b>	N42 11 12 W82 46 56 1.9E 7°W UTC-5(4) Elev 630' A5000	
<b>OPR</b>	Pam/Erik Billing 519-723-4479 Reg PN	
<b>PF</b>	B-1,2 C-3 D-4,6	
<b>FLT PLN</b>	<b>FIC</b> London 866-WXBRIEF (Toll free within Canada) or 866-541-4104 (Toll free within Canada & USA)	
<b>SERVICES</b>	<b>FUEL</b> 100LL (D) Emerg only <b>OIL</b> 100 Emerg only <b>S</b> 5	
<b>RWY DATA</b>	Rwy 10(099°)/28(279°) 2025x100 GRASS <b>RCR</b> Opr Ltd win maint. Rwy may be soft when wet.	
<b>CAUTION</b>	Water lagoons 1500' SW of Thld 10, possible bird hazard. Ditch at Thld 28. Hydro wires along road near Thld 10. Wind turbine 0.5NM SW of Thld 10 1017 ASL (394 AGL). Numerous wind turbines in vic.	

## ONTARIO

## AERODROME / FACILITY DIRECTORY

## ESSEX ON

CNE9

<b>REF</b>	N42 05 45 W82 52 46 4SW 7°W UTC-5(4) Elev 620' A5000	
<b>OPR</b>	P. & A. Harrington 519-776-7441 Reg	
<b>PF</b>	C-1,2,3,5 D-4,6	
<b>FLT PLN</b>	<b>FIC</b> London 866-WXBRIEF (Toll free within Canada) or 866-541-4104 (Toll free within Canada & USA)	
<b>SERVICES</b>	<b>S</b> 2,3,5	
<b>RWY DATA</b>	Rwy 09/27 1935x70 GRASS	
<b>TWY</b>	Twy at hg entrance only.	
<b>RCR</b>	No win maint. A/D clsd in hvy rain periods. Call ahead to confirm rwy has dried up enough to land on.	
<b>COMM</b>	<b>ATF</b> tfc 122.8 5NM 3600 ASL	
<b>PRO</b>	Pilots are requested to avoid flight below 2000 ASL when flying over the Jack Miner Bird Sanctuary (Kingsville, Ont N42 04 00 W82 45 00) & over Point Pelee National Park.	
<b>CAUTION</b>	Ditches at Thlds 09 & 27 and along rwy sides. Wind shear fr hg with N/NE/NW winds. Trees on apch to Rwy 27. Bldg at edge of Rwy 09/27.	