

---

# FLIGHT PLAN & SITE SURVEY

---

N 602-5325 CLUB D'AEROMODELISME ST-PRIME- CLUB  
AEROMDELISTE ST-PRIME

April 29, 2026



## IMPORTANT NOTICE

Please ensure you have received all required authorizations prior to flight. This Site Survey was created using RPAS Wilco. The user accepts all responsibility for the accuracy of the information.

Terms & Conditions: [rpaswilco.com/#tnc](https://rpaswilco.com/#tnc)

# Mission Information

N 602-5325 CLUB D'AEROMODELISME ST-PRIME- CLUB AEROMDELISTE ST-PRIME

## FLIGHT DETAILS

Reference No:	<b>MAAC-602-5325</b>
Project Name:	<b>CLUB D'AEROMODELISME ST-PRIME</b>
Pilot Name:	<b>MAAC</b>
Pilot Certificate:	
Mission Type:	<b>VLOS</b>
Flight Start:	<b>April 29, 2026 07:17 PM</b>
Flight End:	<b>April 29, 2026 08:17 PM</b>

## LOCATION DETAILS

Flight Address:	<b>CLUB AEROMDELISTE ST-PRIME</b>
Latitude:	<b>48° 35' 15.00" N ( 48.587 )</b>
Longitude:	<b>72° 20' 59.00" W ( -72.35 )</b>
Altitude / Radius:	<b>400 ft / 926.0 m ( 0.5 nm)</b>
Classification:	<b>CONTROLLED</b>
FIR / Contact:	<b>CZUL / 514-633-3365</b>

### NOTES

Your flight is in controlled airspace.

If your RPAS is > 250g, please obtain RPAS Flight Authorization using the NavDrone app or by contacting NavCanada. (CARs 901.71)





## REPORT CONTENTS

Site Survey • Obstacles (if available) • Nearby Aerodromes • Canadian Aviation Regulations • GFA • Aerodrome Supplements • METAR & TAF • NOTAMs • CFS

# Flight Map & MODEL Details

MISSION LOCATION SURVEY

## MISSION LOCATION DETAILS

ROLE	LATITUDE	LONGITUDE
 MODEL	48° 35' 15.00" N 48.587	72° 20' 59.00" W -72.35
 Pilot		
 Payload Op.		
 Observer		

# Airspace Classification

MISSION LOCATION SURVEY

## AIRSPACE MAP



## OVERLYING AIRSPACES

Class	Name	Floor	Ceiling
E	Roberval, QC [CZ]	SFC	3000GND
E	Roberval, QC [TA]	700AGL	18000MSL
E	Roberval, QC [CAE]	2200AGL	18000MSL
E	T699 Fixed RNAV Route	2200AGL	18000MSL

## NEAREST AERODROMES & DISTANCE FROM OPERATION

ROBERVAL (CYRJ - AERODROME - Cert)	Lat: 48.52	Long: -72.266	9.711KM	5.24NM	SE
LAC-SAINT JEAN (CYDO - AERODROME - Reg)	Lat: 48.777	Long: -72.375	21.153KM	11.42NM	N
POTVIN HELI-BASE (CPH4 - HELIPORT - Reg)	Lat: 48.931	Long: -72.205	39.641KM	21.4NM	N

## QUEBEC

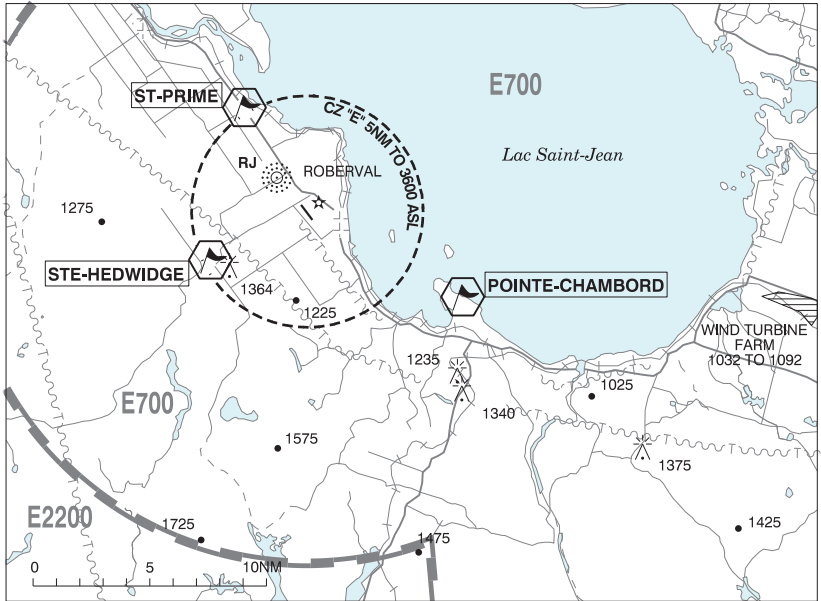
## AERODROME / FACILITY DIRECTORY

## ROBERVAL QC

CYRJ

<b>REF</b>	N48 31 12 W72 15 57 2W 17°W (2013) UTC-5(4) Elev 586' A5010 LO6 LO7 HI5 HI6 CAP	
<b>OPR</b>	Services ADR Inc 418-275-2344 Cert	
<b>PF</b>	A-6,7,8 C-1,2,3,4,5	
<b>FLT PLN</b>	(bil)	
<b>FIC</b>	Québec 866-GOMÉTÉO or 866-WXBRIEF (Toll free within Canada) or 866-541-4105 (Toll free within Canada & USA)	
<b>ACC</b>	Montréal 800-633-1353	
<b>WX</b>	METAR H24. TAF 13-03Z†, issue times: 13, 20Z (DT 12, 14, 20Z).	
<b>SERVICES</b>		
<b>FUEL</b>	100LL, JA-1	
<b>OIL</b>	15W50, W100, W100+, Turbine Oil	
<b>S</b>	1,4,5,6	
<b>PVT ADV</b>	Services ADR Inc 130.3 1200-2200Z† Mon-Fri, 1300-2100Z† Sat-Sun ltd availability.	
<b>RWY DATA</b>	Rwy 16(160°)/34(340°) 5000x150 ASPH Rwy 16 down 0.52%	
<b>RWY CERT</b>	Rwy 16/34 AGN IIIA	
<b>APRON</b>	Advs Services ADR Inc on 130.3 for prkg. ltd availability.	
<b>RCR</b>	Opr 1200-2200Z† Mon-Fri 1300-2100Z† Sat-Sun. O/T for MEDEVAC 2 hr PN for RSC/CRFI, 3 hr PN for win maint. O/T for other acft 6 hr PN for RSC/CRFI and win maint. Call out chg 418-275-2344 PCN	
<b>LIGHTING</b>	16-AO(TE ME), 34-AO(TE ME) P2 ARCAL-122.2 type K	
<b>COMM</b>	(bil)	
<b>RCO</b>	Rouyn rdo 122.2 PTC avbl (RAAS) 11-03Z† Québec rdo 123.55 5680 (FISE) 126.7 (bcst)	
<b>MF</b>	Rouyn rdo 11-03Z† O/T tfc 122.2 5NM 3600 ASL (CAR 602.98)	
<b>NAV</b>		
<b>NDB</b>	RJ 378 (M) N48 32 41 W72 17 40	
<b>CAUTION</b>	P-line W of Thld 34.	

**ROBERVAL VFR TERMINAL PROCEDURES CHART**



NAME	IDENT	LAT/LONG
POINTE-CHAMBORD	VCHAM	N48° 27' 47" W072° 05' 17"
STE-HEDWIDGE	VCHDG	N48° 28' 50" W072° 21' 45"
ST-PRIME	VCSTP	N48° 35' 38" W072° 20' 12"

## QUEBEC

## AERODROME / FACILITY DIRECTORY

## LAC-SAINT-JEAN QC

CYDO

<b>REF</b>	N48 46 36 W72 22 30 7.8NE St-Félicien 16°W (2020) UTC-5(4) Elev 373' A5010 LO7 HI1 HI5 HI6 CAP	
<b>OPR</b>	Aérodrome Lac-Saint-Jean 418-679-3543/7621, 418-637-0188 Reg Ldg fees (commercial acft)	
<b>PF</b>	A-1,7 (ltd hrs) C-3,4,5,6 D-2	
<b>FLT PLN</b>	(bil)	
<b>FIC</b>	Québec 866-GOMÉTÉO or 866-WXBRIEF (Toll free within Canada) or 866-541-4105 (Toll free within Canada & USA)	
<b>ACC</b>	Montréal 800-633-1353	
<b>SERVICES</b>	13-21Z±	
<b>FUEL</b>	100LL, JA-1 418-637-0188, 418-679-3543 O/T call out chg.	
<b>OIL</b>	All	
<b>S</b>	1,2,3,4,5,6	
<b>RWY DATA</b>	Rwy 11(110°)/29(290°) 5001x100 ASPH AGN IIIB Rwy 03(032°)/21(212°) 3563x72 GRVL Clsd Nov 01-Apr 30	
<b>RCR</b>	Opr Win maint 12-23Z O/T MEDEVAC only 3 hrs PN 418-637-0188, 514-607-8080.	
<b>LIGHTING</b>	11-AS(TE ME) P1, 29-AS(TE ME) P1 ARCAL-122.7 type K	
<b>COMM</b>	(bil)	
<b>ATF</b>	tfc 122.7 5NM 3400 ASL	

## QUEBEC

## AERODROME / FACILITY DIRECTORY

**DOLBEAU-MISTASSINI / POTVIN HELI-BASE QC (Heli)****CPH4**

<b>REF</b>	N48 55 51 W72 12 18 17°W (2014) UTC-5(4) Elev 425' A5010
<b>OPR</b>	R. Potvin 418-671-1222 Reg PPR
<b>FLT PLN</b>	
<b>FIC</b>	Québec 866-GOMÉTÉO or 866-WXBRIEF (Toll free within Canada) or 866-541-4105 (Toll free within Canada & USA)
<b>HELI DATA</b>	24' x 60' asphalt
<b>RCR</b>	Opr
<b>COMM</b>	
<b>ATF</b>	tfc 123.2 5NM 3500 ASL