
FLIGHT PLAN & SITE SURVEY

N 179-5284 CLUB LES RADIO-MODÉLISTE INC. RIMOUSKI-
FACE AU 1216 BOUL. ST-GERMAIN EST

April 29, 2026



IMPORTANT NOTICE

Please ensure you have received all required authorizations prior to flight. This Site Survey was created using RPAS Wilco. The user accepts all responsibility for the accuracy of the information.

Terms & Conditions: rpswilco.com/#tnc

Mission Information

N 179-5284 CLUB LES RADIO-MODÉLISTE INC. RIMOUSKI- FACE AU 1216 BOUL. ST-GERMAIN EST

FLIGHT DETAILS

Reference No:	MAAC-179-5284
Project Name:	CLUB LES RADIO-MODÉLISTE INC. RIMOUSKI
Pilot Name:	MAAC
Pilot Certificate:	
Mission Type:	VLOS
Flight Start:	April 29, 2026 06:27 PM
Flight End:	April 29, 2026 07:27 PM

LOCATION DETAILS

Flight Address:	FACE AU 1216 BOUL. ST-GERMAIN EST
Latitude:	48° 24' 33.52" N (48.409)
Longitude:	68° 36' 35.29" W (-68.61)
Altitude / Radius:	400 ft / 926.0 m (0.5 nm)
Classification:	UNCONTROLLED
FIR / Contact:	CZUL / 514-633-3365





REPORT CONTENTS

Site Survey • Obstacles (if available) • Nearby Aerodromes • Canadian Aviation Regulations • GFA • Aerodrome Supplements • METAR & TAF • NOTAMS • CFS

Flight Map & MODEL Details

MISSION LOCATION SURVEY

MISSION LOCATION DETAILS

ROLE	LATITUDE	LONGITUDE
 MODEL	48° 24' 33.52" N 48.409	68° 36' 35.29" W -68.61
 Pilot		
 Payload Op.		
 Observer		

Airspace Classification

MISSION LOCATION SURVEY

AIRSPACE MAP



OVERLYING AIRSPACES

Class	Name	Floor	Ceiling
E	3.5.2-5 [CAE]	6000AGL	18000MSL
E	T660 Fixed RNAV Route	2200AGL	18000MSL
E	Baie-Comeau, QC [TA]	700AGL	18000MSL
E	3.5.2-3 [CAE]	2200AGL	6000MSL

NEAREST AERODROMES & DISTANCE FROM OPERATION

RIMOUSKI (CYXK - AERODROME - Reg)	Lat: 48.477	Long: -68.496	11.275KM	6.09NM	NE
MONT-JOLI (CYYY - AERODROME - Cert)	Lat: 48.609	Long: -68.208	37.002KM	19.98NM	NE
FORESTVILLE (CYFE - AERODROME/HELIPORT - Reg)	Lat: 48.746	Long: -69.097	51.829KM	27.99NM	NW

QUEBEC

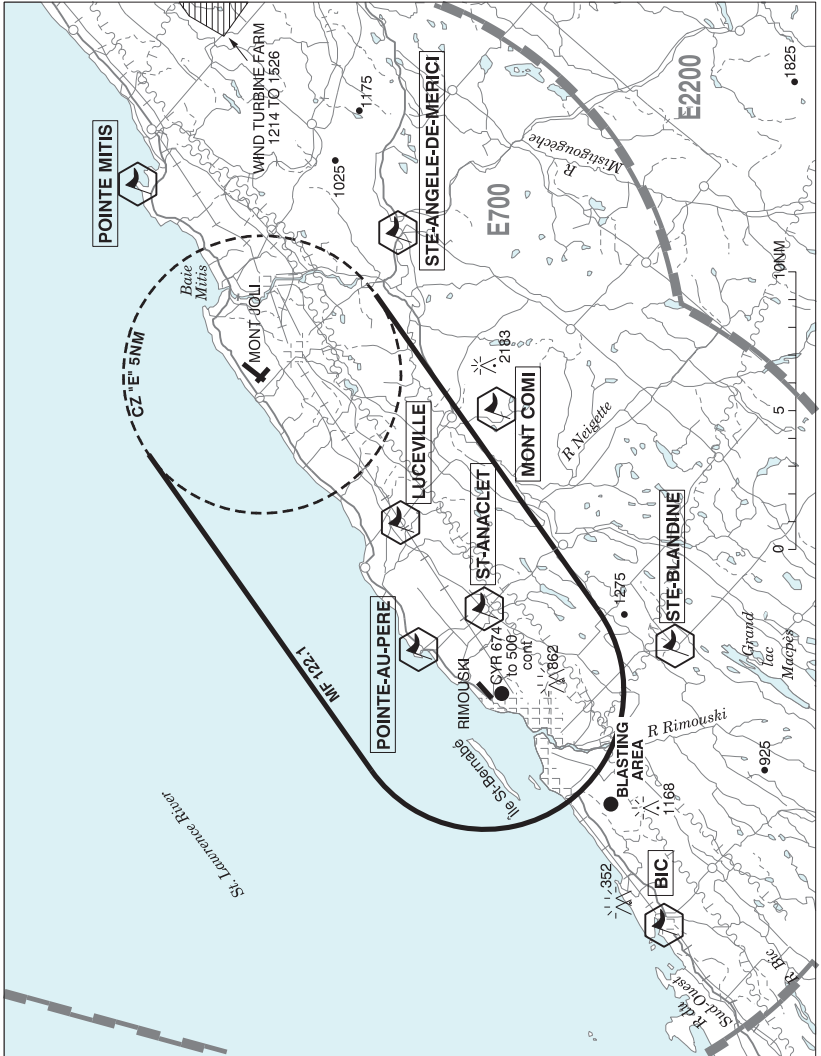
AERODROME / FACILITY DIRECTORY

RIMOUSKI QC

CYXK

REF	N48 28 40 W68 29 47 1.8NE 18°W (2012) UTC-5(4) Elev 82' A5010 LO7 CAP	
OPR	Muni 418-724-3177 Reg	
PF	A-1 B-2 C-3,4,5,6	
FLT PLN	(bil)	
FIC	Québec 866-GOMÉTÉO or 866-WXBRIEF (Toll free within Canada) or 866-541-4105 (Toll free within Canada & USA)	
ACC	Montréal 800-633-1353	
SERVICES	13-22Z‡ Call out chg may be levied for one or more svcs.	
FUEL	100LL, JA-1	
OIL	All	
S	1,4,6 Pilot lounge O/R 418-750-5103	
RWY DATA	Rwy 07(066°)/25(246°) 4600x150 ASPH AGN IV	
RCR	Opr 2 hrs PN outside normal business hrs PCN	
LIGHTING	07-AS(TE LO) P1, 25-AS(TE LO) P1 ARCAL-122.1 type J	
COMM	(bil)	
RADIO	Mont-Joli 122.1 (V) (emerg only 418-775-0055)	
MF	Mont-Joli rdo 122.1 PTC avbl 5NM joined to Mont-Joli MF circle by a corridor equal to the width of their diameter 3200 ASL (CAR 602.98), see Mont-Joli-Rimouski VTPC.	
NAV		
DME	MONT-JOLI YYY 115.9 Ch 106 N48 36 44 W68 12 32 (168')	
PRO	Rgt hand circuits Rwy 07 (CAR 602.96).	
CAUTION	Paramotors: Activities between St-Fabien, Rimouski, Mont-Joli and Matane, sfc up to 500'ASL ocsl 1200'ASL.	

MONT-JOLI - RIMOUSKI VFR TERMINAL PROCEDURES CHART



QUEBEC

AERODROME / FACILITY DIRECTORY

MONT-JOLI - RIMOUSKI VFR TERMINAL PROCEDURES CHART (Cont'd)

NAME	IDENT	LAT/LONG
BIC	VCBIC	N48° 22' 18" W068° 42' 24"
LUCEVILLE	VCLCV	N48° 31' 44" W068° 20' 37"
MONT COMI	VCCMS	N48° 27' 55" W068° 12' 31"
POINTE MITIS	VCMIT	N48° 40' 50" W068° 02' 08"
POINTE-AU-PERE	VCPAP	N48° 30' 38" W068° 27' 34"
ST-ANACLET	VCANA	N48° 28' 38" W068° 25' 26"
STE-ANGELE-DE-MERICI	VCMRC	N48° 31' 31" W068° 04' 51"
STE-BLANDINE	VCSBD	N48° 21' 41" W068° 27' 39"

QUEBEC

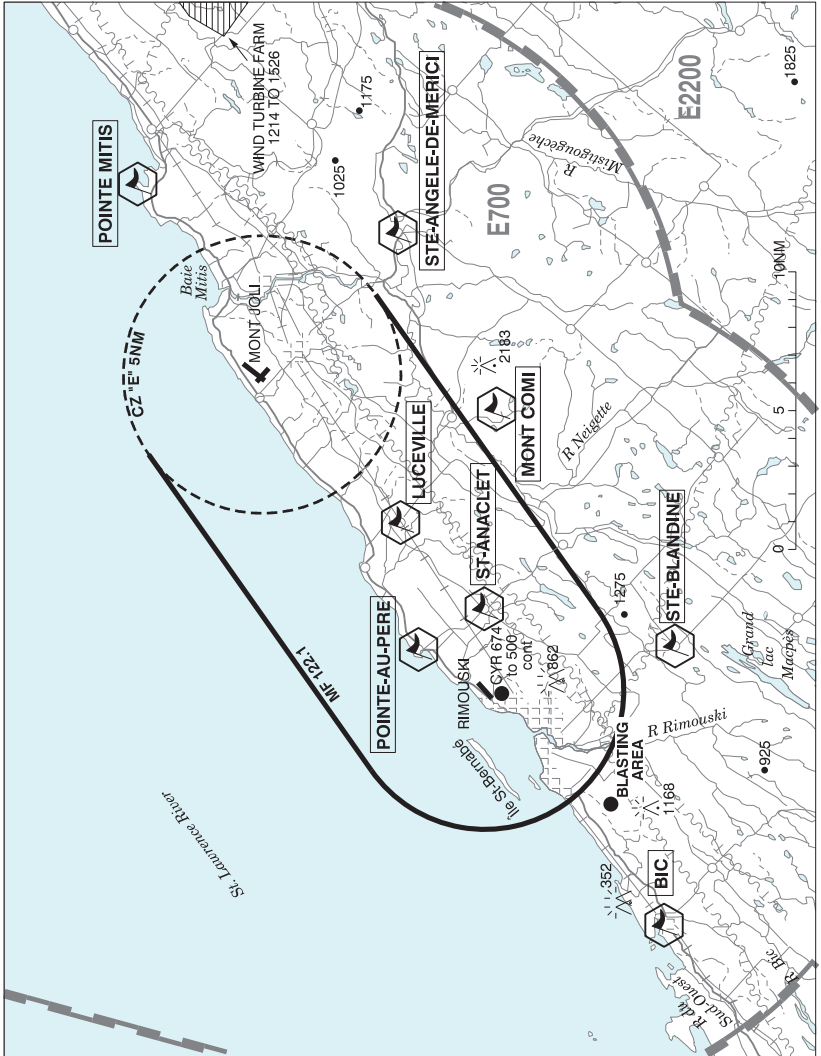
AERODROME / FACILITY DIRECTORY

MONT-JOLI QC

CY9Y

REF	N48 36 32 W68 12 29 1.5NNW 16°W (2026) UTC-5(4) Elev 172' A5010 LO7 HI6 CAP	
OPR	Régie Intermunicipale 418-775-3347 Emerg 418-318-5740 1130-0130Z† Mon-Fri, 13-22Z† Sat-Sun, exc hols, O/T 2 hr PN, call out chg. Cert Ldg fees, tml fees.	
PF	A-1,2,3,6,7,8	
FLT PLN	(bil)	
FIG	Québec 866-GOMÉTÉO or 866-WXBRIEF (Toll free within Canada) or 866-541-4105 (Toll free within Canada & USA)	
ACC	Montréal 800-633-1353	
WX	METAR H24. TAF H24, issue times: 02, 08, 14, 20Z.	
SERVICES	418-775-4020	
FUEL	100LL, JA Avjet 418-775-4020 12-22Z† Mon-Fri, 13-22Z† Sat-Sun O/T call out chg.	
OIL	All	
S	4,5,6	
SUP FL	D-Ice Type 1 & 4, 12-22Z† Mon-Fri, 13-22Z† Sat-Sun, call out chg.	
RWY DATA	Rwy 06(054°)/24(234°) 6000x150 ASPH. Rwy 06 down 0.38%. Rwy 15(148°)/33(328°) 3954x150 ASPH. Rwy 15 up 1.03% Thld 33 displ 230'.	
RWY CERT	Rwy 06/24 AGN IV Rwy 15/33 AGN IIIA	
RCR	OPR CRFI Win maint 1230-2300Z† Mon, 1130-2400Z† Tue-Wed, 1130-0200Z† Thu, 1230-2400Z† Fri, PN ONLY Sat-Sun exc hols, Nov 15-Apr 15 O/T 2 hr PN 418-732-8231, call out chg. Rwy 15/33 clsd fr Nov 1 to May 1, avbl as twy btn Rwy 06/24 and Twy A. PCR	
LIGHTING	06-AO(TE HI) P2, 24-AS(TE HI) P2, 15-(TE ME), 33-(TE ME)	
COMM	(bil)	
RADIO	122.1 PTC avbl (V) (emerg only 418-775-0055)	
RCO	Québec 123.375 (FISE) 126.7 (bcst)	
MF	rdo 122.1 5NM joined to Rimouski MF circle by a corridor equal to the width of their diameter 3200 ASL, see Mont-Joli - Rimouski VTPC. (CAR 602.98)	
PAL	Montréal Ctr 134.65 227.2	
NAV		
DME	YYY 115.9 Ch 106 N48 36 44 W68 12 32 (168')	
LOC	IYY 109.7 (Rwy 06) RVR	
PRO	Rgt hand circuits Rwy 24 (CAR 602.96).	
CAUTION	Paramotors activities between St-Fabien, Rimouski, Mont-Joli and Matane, sfc up to 500 ASL ocsl 1200 ASL. Ultra-light activities 2.0NM SW, max alt 700 ASL. Extv migratory bird activity in vic of A/D Sep 21 - Nov 21.	

MONT-JOLI - RIMOUSKI VFR TERMINAL PROCEDURES CHART



QUEBEC

AERODROME / FACILITY DIRECTORY

MONT-JOLI - RIMOUSKI VFR TERMINAL PROCEDURES CHART (Cont'd)

NAME	IDENT	LAT/LONG
BIC	VCBIC	N48° 22' 18" W068° 42' 24"
LUCEVILLE	VCLCV	N48° 31' 44" W068° 20' 37"
MONT COMI	VCCMS	N48° 27' 55" W068° 12' 31"
POINTE MITIS	VCMIT	N48° 40' 50" W068° 02' 08"
POINTE-AU-PERE	VCPAP	N48° 30' 38" W068° 27' 34"
ST-ANACLET	VCANA	N48° 28' 38" W068° 25' 26"
STE-ANGELE-DE-MERICI	VCMRC	N48° 31' 31" W068° 04' 51"
STE-BLANDINE	VCSBD	N48° 21' 41" W068° 27' 39"

QUEBEC

AERODROME / FACILITY DIRECTORY

FORESTVILLE QC

CYFE

REF	N48 44 46 W69 05 50 Adj W 18°W (2014) UTC-5(4) Elev 293' A5010 LO7	
OPR	Town 418-587-2285 Reg	
PF	B-1 C-2,3,4,5,6	
FLT PLN	(bil)	
FIC	Québec 866-GOMÉTÉO or 866-WXBRIEF (Toll free within Canada) or 866-541-4105 (Toll free within Canada & USA)	
WX	AUTO H24 (see COMM)	
SERVICES	418-587-8991 15 min PN	
FUEL	100LL, JA-1	
OIL	W100, 15W50	
RWY DATA	Rwy 09/27 3937x148 ASPH 2165' before Thld 09 abandoned.	
RCR	Opr Rwy, pads 2 & 3: 12-16Z† & 17-20Z† Mon-Thu, 12-16Z† Fri Jun 15-Sep 1; 13-17Z† & 18-21Z† Mon-Fri May 15-Jun 14 & Sep 2-Nov 15. Pad 1 13-21† Mon-Thu 13-17† Fri. Rwy and pads 2 & 3 clsd Nov 15-May 15.	
HELI DATA	Parking pad 1: 50' dia ASPH/CONC Parking pad 2 & 3: 50' dia ASPH	
LIGHTING	09-AS(TE ME), 27-AS(TE ME) ARCAL-123.2 type J	
COMM	tfc 123.2 5NM 3300 ASL	
ATF	122.975	
AUTO		