

---

# FLIGHT PLAN & SITE SURVEY

---

N 666-4712 CLUB MODELISTE MONTEREGIE ST-CYPRIEN  
DE NAPIERVILLE- GRAND LIGNE DU RANGE DOUBLE - ST  
CYRPRIEN DE NAPIERVILLE QC

April 29, 2026



## IMPORTANT NOTICE

Please ensure you have received all required authorizations prior to flight. This Site Survey was created using RPAS Wilco. The user accepts all responsibility for the accuracy of the information.

Terms & Conditions: [rpswilco.com/#tnc](https://rpswilco.com/#tnc)

# Mission Information

N 666-4712 CLUB MODELISTE MONTEREGIE ST-CYPRIEN DE NAPIERVILLE- GRAND LIGNE DU RANGE DOUBLE - ST CYPRIEN DE NAPIERVILLE QC

## FLIGHT DETAILS

Reference No:	<b>MAAC-666-4712</b>
Project Name:	<b>CLUB MODELISTE MONTEREGIE ST-CYPRIEN DE NAPIERVILLE</b>
Pilot Name:	<b>MAAC</b>
Pilot Certificate:	
Mission Type:	<b>VLOS</b>
Flight Start:	<b>April 29, 2026 07:18 PM</b>
Flight End:	<b>April 29, 2026 08:18 PM</b>

## LOCATION DETAILS

Flight Address:	<b>GRAND LIGNE DU RANGE DOUBLE - ST CYPRIEN DE NAPIERVILLE QC</b>
Latitude:	<b>45° 7' 19.90" N ( 45.122 )</b>
Longitude:	<b>73° 22' 45.90" W ( -73.379 )</b>
Altitude / Radius:	<b>400 ft / 926.0 m ( 0.5 nm)</b>
Classification:	<b>UNCONTROLLED</b>
FIR / Contact:	<b>CZUL / 514-633-3365</b>





## REPORT CONTENTS

Site Survey • Obstacles (if available) • Nearby Aerodromes • Canadian Aviation Regulations • GFA • Aerodrome Supplements • METAR & TAF • NOTAMs • CFS

# Flight Map & MODEL Details

MISSION LOCATION SURVEY

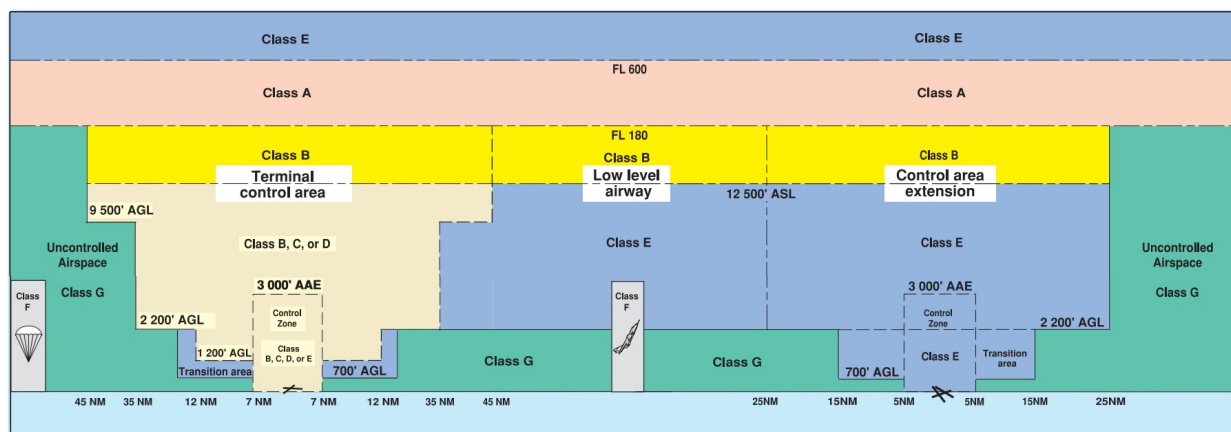
## MISSION LOCATION DETAILS

ROLE	LATITUDE	LONGITUDE
 MODEL	45° 7' 19.90" N 45.122	73° 22' 45.90" W -73.379
 Pilot		
 Payload Op.		
 Observer		

# Airspace Classification

MISSION LOCATION SURVEY

## AIRSPACE MAP



## OVERLYING AIRSPACES

Class	Name	Floor	Ceiling
E	St-Jean, QC [TA]	700AGL	18000MSL
E	3.5.2-4 [CAE]	2000AGL	18000MSL
C	Montréal, QC f) [TCA]	5000MSL	12500MSL
E	T705 Fixed RNAV Route	2200AGL	18000MSL
E	T721 Fixed RNAV Route	2200AGL	18000MSL
E	T739-2 Fixed RNAV Route	2200AGL	18000MSL

## NEAREST AERODROMES & DISTANCE FROM OPERATION

ST-JEAN (CYJN - AERODROME - Cert)	Lat: 45.294	Long: -73.281	20.601KM	11.12NM	N
ST-MICHEL (CML9 - HELIPORT - Reg)	Lat: 45.255	Long: -73.551	19.972KM	10.78NM	NW
ST-MATHIEU-DE-LAPRAIRIE (CML8 - AERODROME - Reg)	Lat: 45.311	Long: -73.565	25.536KM	13.79NM	NW

## QUEBEC

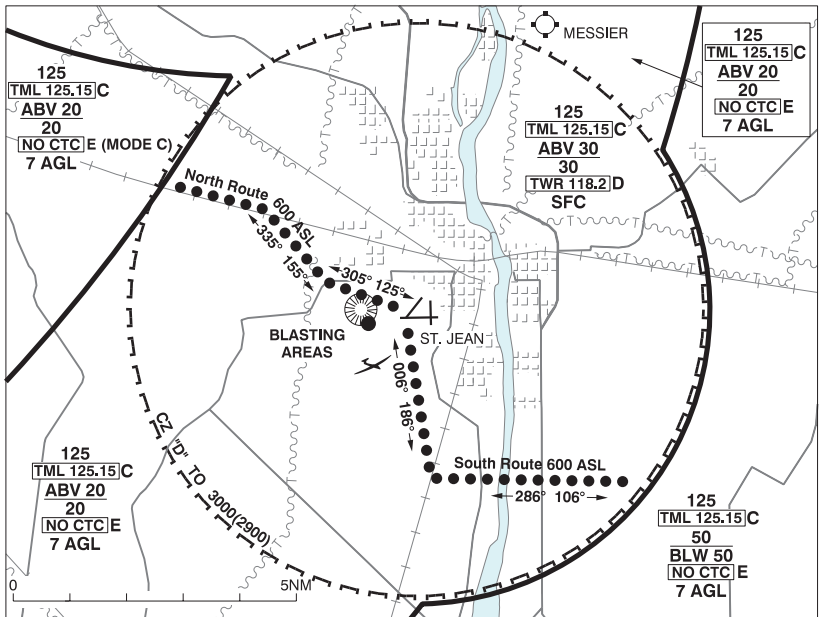
## AERODROME / FACILITY DIRECTORY

## ST-JEAN QC

CYJN

<b>REF</b>	N45 17 40 W73 16 54 Adj SW 15°W (2012) UTC-5(4) Elev 136' VTA A5002 LO6 LO7 LO8 T2 CAP	
<b>OPR</b>	Muni 450-359-2010 Ext 2068 Cert	
<b>PF</b>	A-7,8 FBO/Apron Password: 1182 B-1 C-2,3,4,5,6	
<b>FLT PLN</b>	(bil)	
<b>FIG</b>	Québec 866-GOMÉTÉO or 866-WXBRIEF (Toll free within Canada) or 866-541-4105 (Toll free within Canada & USA)	
<b>ACC</b>	Montréal 514-633-3211 or 800-633-1353. All Fit Plns, IFR tng fits PPR. Fit Plns by Fax at 514-633-2877 & include phone numbers where pilot can be reached prior to dep. When twr closed IFR clearance or activation 514-633-3014.	
<b>WX</b>	LWIS H24 LAWO 1230-0230Z‡ Apr-Oct; 13-02Z‡ Nov-Mar	
<b>SERVICES</b>		
<b>FUEL</b>	100LL, JA-1 (FSII avbl) 14-21Z‡ Dec-Mar, 13-21Z Apr-May, 13-21Z Mon-Fri, 13-22Z Sat-Sun Jun-Sep; 14-22Z‡ Oct-Nov	
<b>OIL</b>	W100, 15W30	
<b>S</b>	4,5,6	
<b>PVT ADV</b>	FBO 123.35 450-741-6799	
<b>RWY DATA</b>	Rwy 11(105°)/29(285°) 4012x100 ASPH Thld 11 displ 600'. Rwy 02(015°)/20(195°) 2438x100 ASPH Rwy 06(060°)/24(240°) 2349x100 ASPH	
<b>RWY CERT</b>	Rwy 11/29 AGN IIIA Rwy 02/20 AGN II Rwy 06/24 AGN II	
<b>TWY CERT</b>	Twy: A, B, E AGN II	
<b>TWY</b>	Twy C, E: uncontrolled.	
<b>RCR</b>	Opr or Twr 450-347-4233 15-21Z‡ O/T PN during business hrs Rwy 06/24 no win maint. CRFI, PCN	
<b>LIGHTING</b>	11-(T ME), 29-(TE ME) ARCAL-118.2 type J	
<b>COMM</b>	(bil)	
<b>GND</b>	121.7 1230-0230Z‡ Apr-Oct; 13-02Z‡ Nov-Mar	
<b>TWR</b>	118.2 (V) 1230-0230Z‡ Apr-Oct; 13-02Z‡ Nov-Mar (emerg only 450-347-4233) tfc 118.2 0230-1230Z‡ Apr-Oct; 02-13Z‡ Nov-Mar 5NM 3000 ASL	
<b>ARR</b>	Montréal 125.15 268.3	
<b>DEP</b>	Montréal 125.15 268.3	
<b>VFR ADV</b>	Montréal Tml 125.15	
<b>PRO</b>	Rgt hand circuits Rwy 11 (CAR 602.96). Intsv glider tng fr aprt to 3NM S dly fr mid-Apr to mid-Aug & wknds Sep-Nov. VFR training not auth 0230-1230Z‡. <b>VFR Codes:</b> Refer to MONTRÉAL VTPC section VFR FLIGHTS IN MONTRÉAL/TRUDEAU, MONTRÉAL/MET (AÉROPORT MÉTROPOLITAIN DE MONTRÉAL), MONTRÉAL/MIRABEL AND MONTRÉAL TERMINAL CLASS C AIRSPACE. <b>Training:</b> VFR circuits PPR 1-800-633-1353. See VTPC for heli arr/dep rte.	
<b>CAUTION</b>	Periodic blasting ops 1NM W of aprt, ctc TWR. Possible uncontrolled win maint eqpt on rwy. Increased bird activity Jul-Dec.	

## ST-JEAN HELI VFR TERMINAL PROCEDURES CHART

**SOUTH ROUTE****Arrival Procedures:**

From Highway 35 fly heading 286° to the railway (south of the forest) then fly heading 006° to the airport.

**Departure Procedures:**

From the airport fly heading 186° to the railway (south of the forest) then fly heading 106° until exiting the control zone.

**NORTH ROUTE****Arrival Procedures:**

Fly over the railway to the intersection of Chemin du Grand Pré then fly heading 155° to the intersection of Rue des Carrières and Chemin du Clocher then fly heading 125° to the airport.

**Departure Procedures:**

From the airport fly heading 305° to the intersection of Rue des Carrières and Chemin du Clocher then fly heading 335° to the intersection of the railway and Chemin du Grand Pré then fly over the railway until exiting the control zone.

## QUEBEC

## AERODROME / FACILITY DIRECTORY

## ST-MICHEL QC (Heli)

CML9

<b>REF</b>	N45 15 18 W73 33 03 1.3 ENE 14°W (2017) UTC-5(4) Elev 220' aprx VTA A5002	
<b>OPR</b>	Chantal Lussier 514-973-4860 Reg PPR	
<b>FLT PLN</b>	(bil)	
<b>FIC</b>	Québec 866-GOMÉTÉO or 866-WXBRIEF (Toll free within Canada) or 866-541-4105 (Toll free within Canada and the USA)	
<b>SERVICES</b>		
<b>FUEL</b>	100LL	
<b>HELI DATA</b>	FATO/TLOF 50' x 50' ASPH Safety Area 65' x 65' Max heli overall length 38.6'	
<b>RCR</b>	Opr	
<b>COMM</b>	(bil)	
<b>ATF</b>	tfc 123.2 5NM 2000 ASL outside Montreal TCA	
<b>PRO</b>	Arr/dep 200° fr heli	

## QUEBEC

## AERODROME / FACILITY DIRECTORY

## ST-MATHIEU-DE-LAPRAIRIE QC

CML8

<b>REF</b>	N45 18 40 W73 33 55 2WSW 14°W (2018) UTC-5(4) Elev 155 VTA A5002	
<b>OPR</b>	Aerolane 514-594-2897 Reg PPR	
<b>PF</b>	C-3,5,6	
<b>FLT PLN</b>	(bil)	
<b>FIC</b>	Québec 866-GOMÉTÉO or 866-WXBRIEF (Toll free within Canada) or 866-541-4105 (Toll free within Canada & USA)	
<b>SERVICES</b>		
<b>FUEL</b>	100LL	
<b>S</b>	1,5	
<b>RWY DATA</b>	Rwy13(127°)/31(307°) 3000x50 GRVL/ASPH, ctr 20' ASPH Thld 13 displ 600' Thld 31 displ 400'	
<b>RCR</b>	Opr	
<b>COMM</b>		
<b>ATF</b>	tfc 123.2 5NM 3200 ASL excluding Montréal/Pierre Elliott Trudeau Intl CZ, Montréal/Met (Aéroport Métropolitain de Montréal) CZ and the airspace that lies within Montreal TCA class C airspace	
<b>CAUTION</b>	Lgtd & unlgtd wind turbines to 607 ASL (456 AGL) W of thld 13 (see sketch) and to 653 ASL (456 AGL) aprx 0.7NM S & SW of A/D. 30 AGL P-line crosses apch to Rwy 31, 1400' fr displ thld.	