

FLIGHT PLAN & SITE SURVEY

C 52-5877 BOUNDARY BARNSTORMERS RADIO
CONTROLLED MODEL FLYING CLUB- Grand Forks
Secondary School Gym

May 12, 2026



IMPORTANT NOTICE

Please ensure you have received all required authorizations prior to flight. This Site Survey was created using RPAS Wilco. The user accepts all responsibility for the accuracy of the information.

Terms & Conditions: rpswilco.com/#tnc

Generated by RPAS Wilco

Mission Information

C 52-5877 BOUNDARY BARNSTORMERS RADIO CONTROLLED MODEL FLYING CLUB- GRAND FORKS SECONDARY SCHOOL GYM

FLIGHT DETAILS

Reference No:	MAAC-52-5877
Project Name:	BOUNDARY BARNSTORMERS RADIO CONTROLLED MODEL FLYING CLUB
Pilot Name:	MAAC
Pilot Certificate:	
Mission Type:	VLOS
Flight Start:	May 12, 2026 10:37 PM
Flight End:	May 12, 2026 11:37 PM

LOCATION DETAILS

Flight Address:	Grand Forks Secondary School Gym
Latitude:	49° 1' 50.80" N (49.031)
Longitude:	118° 27' 5.70" W (-118.452)
Altitude / Radius:	400 ft / 926 m (0.5 nm)
Classification:	CERT
FIR / Contact:	CZVR / 604-586-4500

NOTES

Your flight is within 3NM of a certified aerodrome or 1NM of a certified heliport.
Please comply with Transport Canada established procedure as found in TC AIM RPA 3.4.5. (CARs 901.73)





REPORT CONTENTS

Site Survey • Obstacles (if available) • Nearby Aerodromes • Canadian Aviation Regulations • GFA • Aerodrome Supplements • METAR & TAF • NOTAMS • CFS

Flight Map & MODEL Details

MISSION LOCATION SURVEY

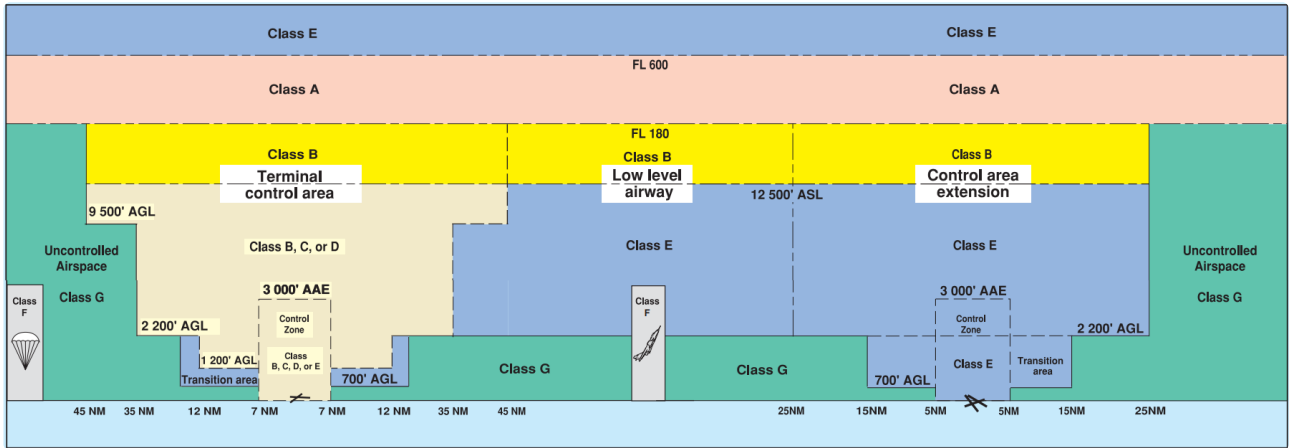
MISSION LOCATION DETAILS

ROLE	LATITUDE	LONGITUDE
 MODEL	49° 1' 50.80" N 49.031	118° 27' 5.70" W -118.452
 Pilot		
 Payload Op.		
 Observer		

Airspace Classification

MISSION LOCATION SURVEY

AIRSPACE MAP



OVERLYING AIRSPACES

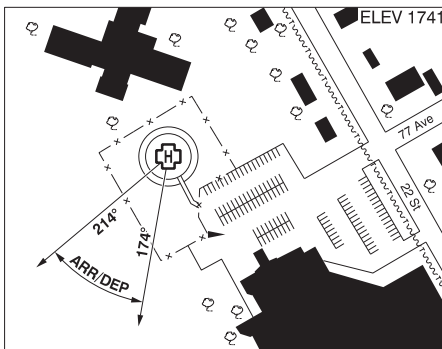
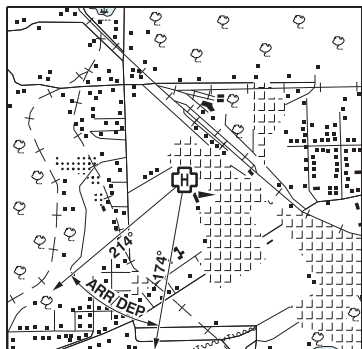
Class	Name	Floor	Ceiling
E	3.1.2-48 [CAE]	9000AGL	18000MSL

NEAREST AERODROMES & DISTANCE FROM OPERATION

GRAND FORKS (BOUNDARY HOSPITAL) (CGF4 - HELIPORT - Cert)	Lat: 49.031	Long: -118.47	1.323KM	0.714NM	W
GRAND FORKS (CZGF - AERODROME - Reg)	Lat: 49.016	Long: -118.43	2.297KM	1.24NM	SE
MIDWAY (CBM6 - AERODROME - Reg)	Lat: 49.01	Long: -118.79	24.765KM	13.372NM	W

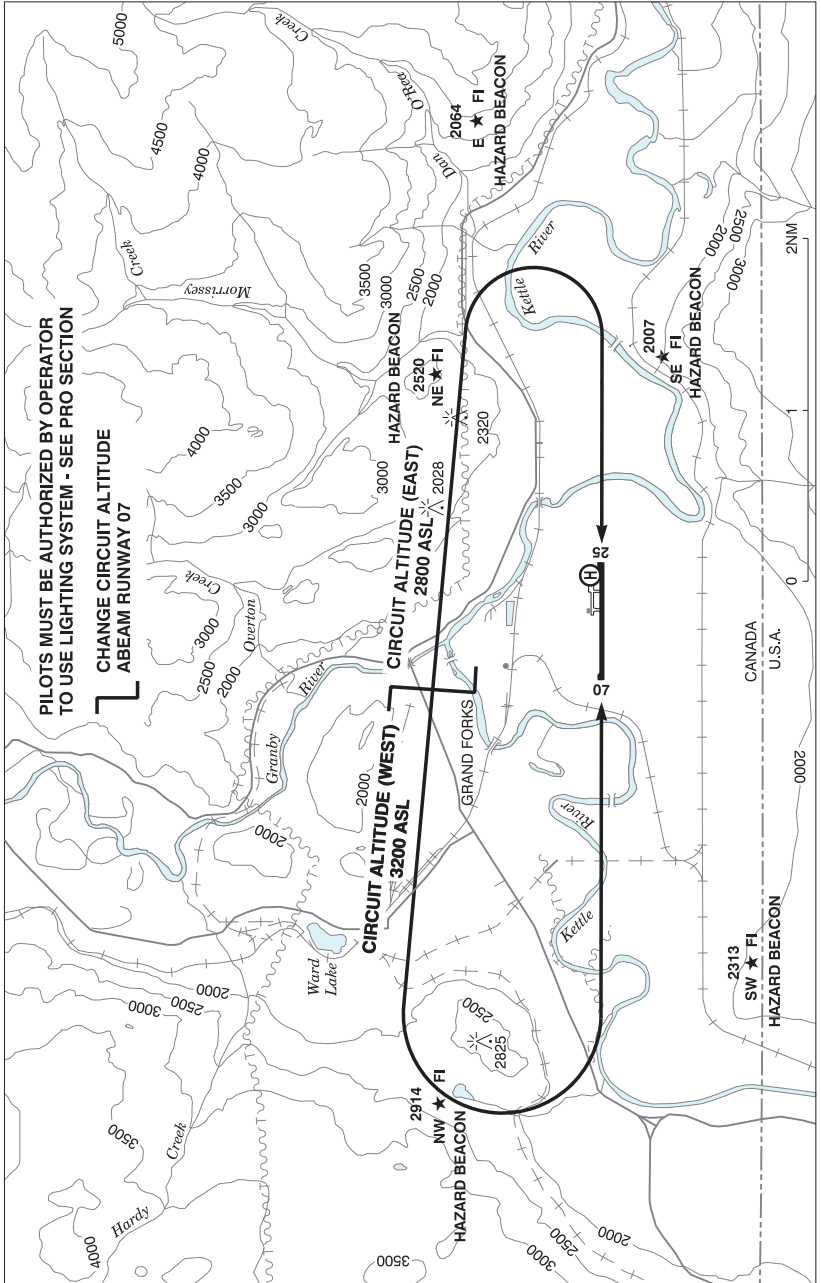
GRAND FORKS (BOUNDARY HOSPITAL) BC (Heli)

CGF4



REF	N49 01 50 W118 28 12 Adj 16°E (2014) UTC-8(7) Elev 1741' A5005
OPR	Boundary Hospital 250-443-1678 Cert PPR
PF	A-1,4 C-2,3,5,6
FLT PLN	FIG Kamloops 866-WXBRIEF (Toll free within Canada) or 866-541-4101 (Toll free within Canada & USA)
HELI DATA	FATO/TLOF 86' dia ASPH Safety Area 115' dia Max heli overall length 57.4'
RCR	Opr
COMM	RCO Pacific rdo 125.85 (FISE) 126.7(bcst) ATF Grand Forks tfc 123.2 5NM centred on Grand Forks A/D 1.8NM ESE 4700 ASL
PRO	Arr/dep btwn 174° - 214° fr heli, Slope 8% (H3), day only (CAR 602.96).
CAUTION	Marked P-Line 345' NE to SW of heli 41 AGL, 2 prkg lgts and windsock 160' SE of heli.

GRAND FORKS VFR TERMINAL PROCEDURES CHART - NIGHT CIRCUIT PROCEDURE



BRITISH COLUMBIA

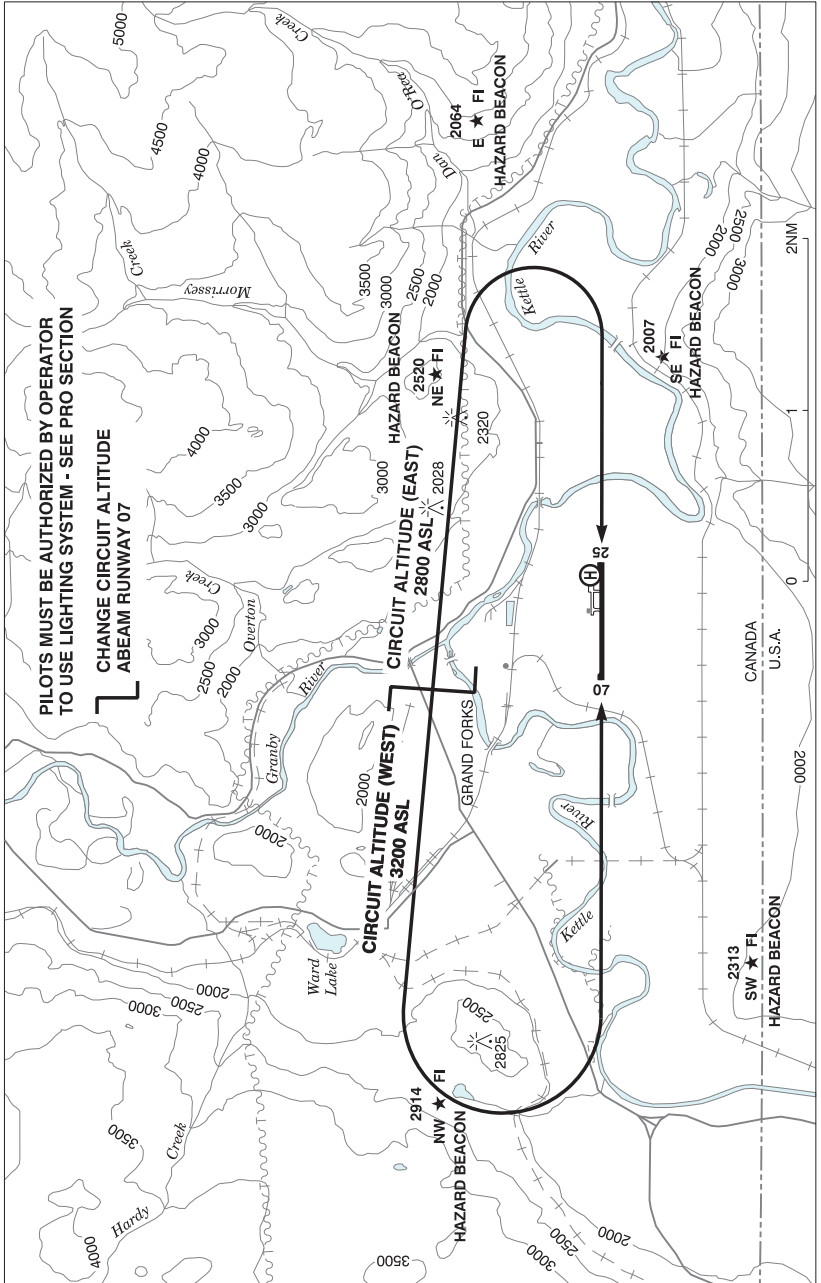
AERODROME / FACILITY DIRECTORY

GRAND FORKS BC

CZGF

REF	N49 00 56 W118 25 50 1SSE 16°E (2013) UTC-8(7) Elev 1724' A5005 LO2 CAP	
OPR	City 250-442-8266 Reg	
PF	A-1 C-2,3,4,5,6	
CUST	AOE/CAN	
FLT PLN	FIC Kamloops 866-WXBRIEF (Toll free within Canada) or 866-541-4101 (Toll free within Canada & USA) WX AUTO 250-442-0043 (see COMM) WxCam	
SERVICES	FUEL 100LL, JA 250-443-4183 OIL 80, 100, 15W-50 S 1,3,4,5	
RWY DATA	Rwy 07(074°)/25(254°) 4311x100 ASPH Rwy 25 up 0.78% AGN IIIA	
RCR	Opr Ltd win maint 1500-2330‡ Mon-Fri exc hols. O/T 2 hrs PN. Call out chg may be levied.	
LIGHTING	07-(TE ME) P1 4°, 25-(TE ME) P1 4° ARCAL-123.2 type K key mic 5 times to activate. Ngt use only. See PRO.	
COMM	RCO Pacific rdo 125.85 (FISE) 126.7 (bcst) ATF tfc 123.2 5NM 4700 ASL AUTO 122.55	
PRO	Only pilots auth by the Aprt Opr in accordance with the Aprt Ops Manual can use the aprt dur hrs of darkness. Ngt circuit alt W 3200 ASL, E 2800 ASL. See VTPC ngt circuit pro. Rgt hand circuits Rwy 25 (CAR 602.96).	
CAUTION	Remotely Piloted Aircraft (RPA) ops in vic, N of rwy and radio ctl acft flying, monitoring ATF.	

GRAND FORKS VFR TERMINAL PROCEDURES CHART - NIGHT CIRCUIT PROCEDURE



BRITISH COLUMBIA

AERODROME / FACILITY DIRECTORY

MIDWAY BC

CBM6

REF	N49 00 36 W118 47 23 Adj W 16°E (2013) UTC-8(7) Elev 1896' A5005	
OPR	Village of Midway 250-449-2222 Reg	
PF	C-1,2,4,5	
FLT PLN	FIC Kamloops 866-WXBRIEF (Toll free within Canada) or 866-541-4101 (Toll free within Canada & USA)	
RWY DATA	Rwy 08/26 3500x125 GRASS RCR Opr No win maint	
COMM	ATF tfc 123.2 2NM 3400 ASL	
CAUTION	Rdo-ctl acft oprg fr A/D. Model acft activity next to rwy.	