

# FLIGHT PLAN & SITE SURVEY

---

C 52-5877 BOUNDARY BARNSTORMERS RADIO  
CONTROLLED MODEL FLYING CLUB- Grand Forks  
Secondary School Gym

May 12, 2026



## IMPORTANT NOTICE

Please ensure you have received all required authorizations prior to flight. This Site Survey was created using RPAS Wilco. The user accepts all responsibility for the accuracy of the information.

Terms & Conditions: [rpswilco.com/#tnc](https://rpswilco.com/#tnc)

Generated by RPAS Wilco

# Mission Information

C 52-5877 BOUNDARY BARNSTORMERS RADIO CONTROLLED MODEL FLYING CLUB- GRAND FORKS SECONDARY SCHOOL GYM

## FLIGHT DETAILS

Reference No:	MAAC-52-5877
Project Name:	BOUNDARY BARNSTORMERS RADIO CONTROLLED MODEL FLYING CLUB
Pilot Name:	MAAC
Pilot Certificate:	
Mission Type:	VLOS
Flight Start:	May 12, 2026 10:40 PM
Flight End:	May 12, 2026 11:40 PM

## LOCATION DETAILS

Flight Address:	Grand Forks Secondary School Gym
Latitude:	49° 1' 50.80" N ( 49.031 )
Longitude:	118° 27' 5.70" W ( -118.452 )
Altitude / Radius:	400 ft / 926 m ( 0.5 nm )
Classification:	CERT
FIR / Contact:	CZVR / 604-586-4500

### NOTES

Your flight is within 3NM of a certified aerodrome or 1NM of a certified heliport.  
Please comply with Transport Canada established procedure as found in TC AIM RPA 3.4.5. (CARs 901.73)





## REPORT CONTENTS

Site Survey • Obstacles (if available) • Nearby Aerodromes • Canadian Aviation Regulations • GFA • Aerodrome Supplements • METAR & TAF • NOTAMS • CFS

# Flight Map & MODEL Details

MISSION LOCATION SURVEY

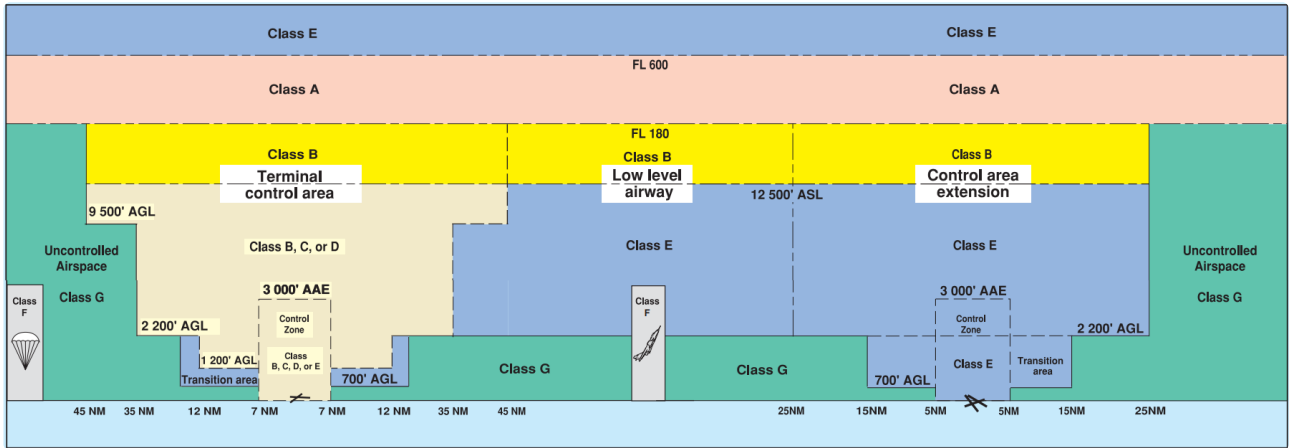
## MISSION LOCATION DETAILS

ROLE	LATITUDE	LONGITUDE
 MODEL	49° 1' 50.80" N 49.031	118° 27' 5.70" W -118.452
 Pilot		
 Payload Op.		
 Observer		

# Airspace Classification

MISSION LOCATION SURVEY

## AIRSPACE MAP



## OVERLYING AIRSPACES

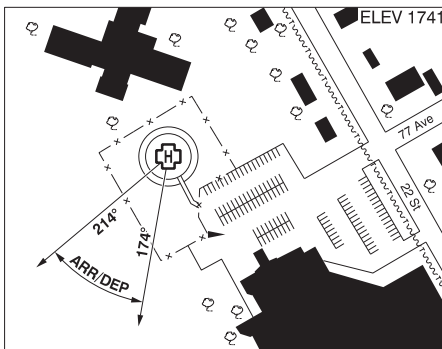
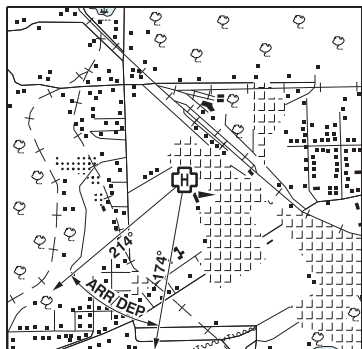
Class	Name	Floor	Ceiling
E	3.1.2-48 [CAE]	9000AGL	18000MSL

## NEAREST AERODROMES & DISTANCE FROM OPERATION

GRAND FORKS (BOUNDARY HOSPITAL) (CGF4 - HELIPORT - Cert)	Lat: 49.031	Long: -118.47	1.323KM	0.714NM	W
GRAND FORKS (CZGF - AERODROME - Reg)	Lat: 49.016	Long: -118.43	2.297KM	1.24NM	SE
MIDWAY (CBM6 - AERODROME - Reg)	Lat: 49.01	Long: -118.79	24.765KM	13.372NM	W

**GRAND FORKS (BOUNDARY HOSPITAL) BC (Heli)**

**CGF4**



<b>REF</b>	N49 01 50 W118 28 12 Adj 16°E (2014) UTC-8(7) Elev 1741' A5005
<b>OPR</b>	Boundary Hospital 250-443-1678 Cert PPR
<b>PF</b>	A-1,4 C-2,3,5,6
<b>FLT PLN</b>	<b>FIC</b> Kamloops 866-WXBRIEF (Toll free within Canada) or 866-541-4101 (Toll free within Canada & USA)
<b>HELI DATA</b>	FATO/TLOF 86' dia ASPH Safety Area 115' dia Max heli overall length 57.4'
	<b>RCR</b> Opr
<b>COMM</b>	<b>RCO</b> Pacific rdo 125.85 (FISE) 126.7(bcst) <b>ATF</b> Grand Forks tfc 123.2 5NM centred on Grand Forks A/D 1.8NM ESE 4700 ASL
<b>PRO</b>	Arr/dep btwn 174° - 214° fr heli, Slope 8% (H3), day only (CAR 602.96).
<b>CAUTION</b>	Marked P-Line 345' NE to SW of heli 41 AGL, 2 prkg lgts and windsock 160' SE of heli.



## BRITISH COLUMBIA

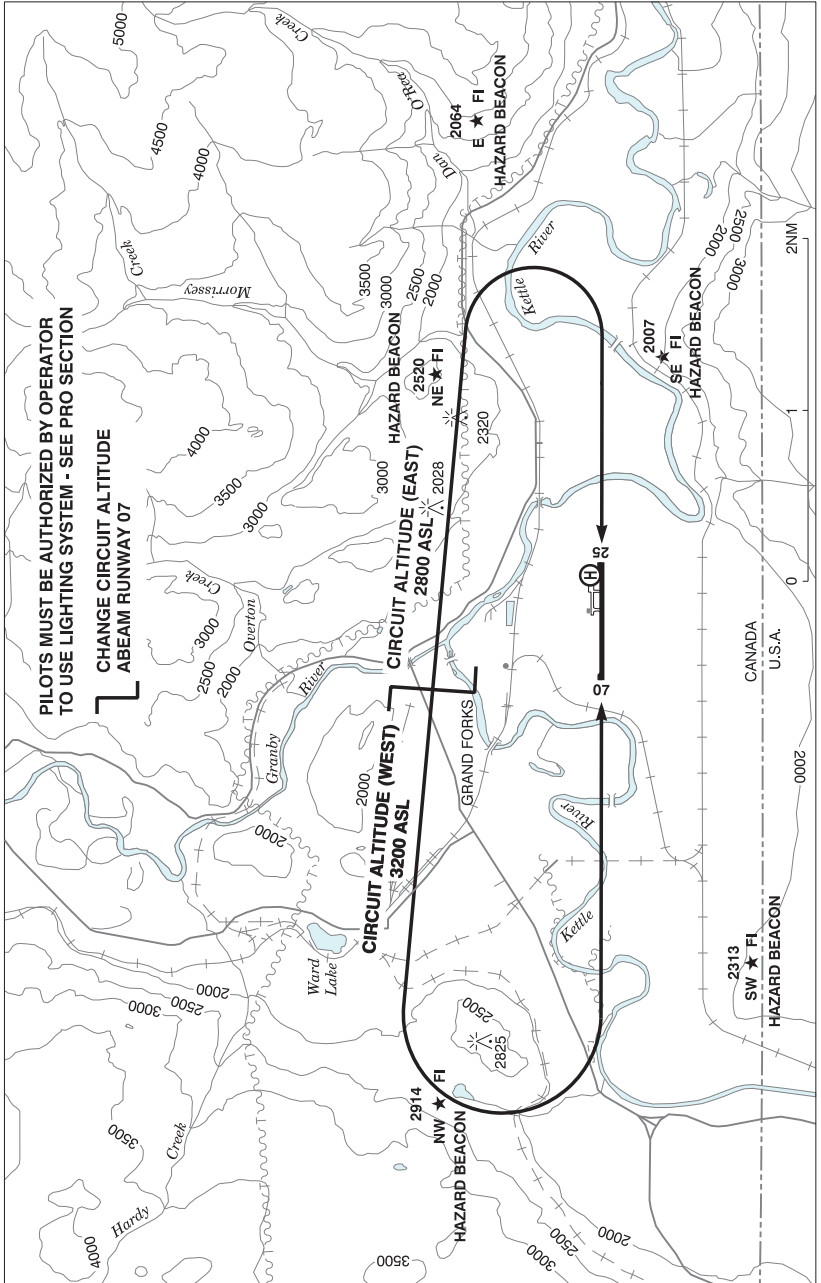
## AERODROME / FACILITY DIRECTORY

## GRAND FORKS BC

CZGF

<b>REF</b>	N49 00 56 W118 25 50 1SSE 16°E (2013) UTC-8(7) Elev 1724' A5005 LO2 CAP	
<b>OPR</b>	City 250-442-8266 Reg	
<b>PF</b>	A-1 C-2,3,4,5,6	
<b>CUST</b>	AOE/CAN	
<b>FLT PLN</b>	<b>FIC</b> Kamloops 866-WXBRIEF (Toll free within Canada) or 866-541-4101 (Toll free within Canada & USA) <b>WX</b> AUTO 250-442-0043 (see COMM) WxCam	
<b>SERVICES</b>	<b>FUEL</b> 100LL, JA 250-443-4183 <b>OIL</b> 80, 100, 15W-50 <b>S</b> 1,3,4,5	
<b>RWY DATA</b>	Rwy 07(074°)/25(254°) 4311x100 ASPH Rwy 25 up 0.78% AGN IIIA <b>RCR</b> Opr Ltd win maint 1500-2330‡ Mon-Fri exc hols. O/T 2 hrs PN. Call out chg may be levied.	
<b>LIGHTING</b>	07-(TE ME) P1 4°, 25-(TE ME) P1 4° ARCAL-123.2 type K key mic 5 times to activate. Ngt use only. See PRO.	
<b>COMM</b>	<b>RCO</b> Pacific rdo 125.85 (FISE) 126.7 (bcst) <b>ATF</b> tfc 123.2 5NM 4700 ASL <b>AUTO</b> 122.55	
<b>PRO</b>	Only pilots auth by the Aprt Opr in accordance with the Aprt Ops Manual can use the aprt dur hrs of darkness. Ngt circuit alt W 3200 ASL, E 2800 ASL. See VTPC ngt circuit pro. Rgt hand circuits Rwy 25 (CAR 602.96).	
<b>CAUTION</b>	Remotely Piloted Aircraft (RPA) ops in vic, N of rwy and radio ctl acft flying, monitoring ATF.	

**GRAND FORKS VFR TERMINAL PROCEDURES CHART - NIGHT CIRCUIT PROCEDURE**



## BRITISH COLUMBIA

## AERODROME / FACILITY DIRECTORY

## MIDWAY BC

CBM6

<b>REF</b>	N49 00 36 W118 47 23 Adj W 16°E (2013) UTC-8(7) Elev 1896' A5005	
<b>OPR</b>	Village of Midway 250-449-2222 Reg	
<b>PF</b>	C-1,2,4,5	
<b>FLT PLN</b>	<b>FIC</b> Kamloops 866-WXBRIEF (Toll free within Canada) or 866-541-4101 (Toll free within Canada & USA)	
<b>RWY DATA</b>	Rwy 08/26 3500x125 GRASS	
<b>RCR</b>	Opr No win maint	
<b>COMM</b>	<b>ATF</b> tfc 123.2 2NM 3400 ASL	
<b>CAUTION</b>	Rdo-ctl acft oprg fr A/D. Model acft activity next to rwy.	