

---

# FLIGHT PLAN & SITE SURVEY

---

G 787-4903 ULTIMATE PARK ELECTRIC FLYERS-  
ULTIMATE PARKS INC. OF THE OTTAWA CARLETON  
ULTIMATE ASSOCIATION

May 22, 2026



**IMPORTANT NOTICE**

Please ensure you have received all required authorizations prior to flight. This Site Survey was created using RPAS Wilco. The user accepts all responsibility for the accuracy of the information.

Terms & Conditions: [rpswilco.com/#tnc](https://rpswilco.com/#tnc)

# Mission Information

G 787-4903 ULTIMATE PARK ELECTRIC FLYERS- ULTIMATE PARKS INC. OF THE OTTAWA CARLETON ULTIMATE ASSOCIATION

## FLIGHT DETAILS

Reference No:	<b>MAAC-787-4903</b>
Project Name:	<b>ULTIMATE PARK ELECTRIC FLYERS</b>
Pilot Name:	<b>MAAC</b>
Pilot Certificate:	
Mission Type:	<b>VLOS</b>
Flight Start:	<b>May 22, 2026 02:45 PM</b>
Flight End:	<b>May 22, 2026 03:45 PM</b>

## LOCATION DETAILS

Flight Address:	<b>ULTIMATE PARKS INC. OF THE OTTAWA CARLETON ULTIMATE ASSOCIATION</b>
Latitude:	<b>45° 14' 40.90" N ( 45.245 )</b>
Longitude:	<b>75° 36' 56.20" W ( -75.616 )</b>
Altitude / Radius:	<b>400 ft / 926 m ( 0.5 nm )</b>
Classification:	<b>UNCONTROLLED</b>
FIR / Contact:	<b>CZUL / 514-633-3365</b>

## REPORT CONTENTS

Site Survey • Obstacles (if available) • Nearby Aerodromes • Canadian Aviation Regulations • GFA • Aerodrome Supplements • METAR & TAF • NOTAMS • CFS





# Flight Map & MODEL Details

MISSION LOCATION SURVEY

## FLIGHT AREA MAP



## MISSION LOCATION DETAILS

ROLE	LATITUDE	LONGITUDE
 MODEL	45° 14' 40.90" N 45.245	75° 36' 56.20" W -75.616
 Pilot		
 Payload Op.		
 Observer		

# Airspace Classification

MISSION LOCATION SURVEY

## AIRSPACE MAP



## OVERLYING AIRSPACES

Class	Name	Floor	Ceiling
E	3.5.2-5 [CAE]	6000AGL	18000MSL
E	Ottawa, ON b) [CAE]	2500AGL	18000MSL
E	Ottawa, ON e) [TSP]	6500MSL	12500MSL
E	T781 Fixed RNAV Route	2200AGL	18000MSL
E	Ottawa, ON b) [TSP]	2500MSL	4000MSL
F	CYA528 (S,T) KEMPTVILLE, ON	SFC	4000MSL
F	CYA534 (S) KARS, ON	SFC	2500MSL
C	Ottawa, ON g) [TCA]	1500MSL	2500MSL
B	Ottawa, ON a) [TCA]	12500MSL	18000MSL
C	Ottawa, ON b) [TCA]	5000MSL	12500MSL
C	Ottawa, ON c) [TCA]	4000MSL	5000MSL
C	Ottawa, ON d) [TCA]	3000MSL	4000MSL
C	Ottawa, ON e) [TCA]	2500MSL	3000MSL
E	T636 Fixed RNAV Route	2200AGL	18000MSL
C	Ottawa/Macdonald-Cartier Intl, ON a) [CZ]	SFC	2000MSL
C	Ottawa/Macdonald-Cartier Intl, ON b) [CZ]	2000MSL	3000MSL
E	T614 Fixed RNAV Route	2200AGL	18000MSL
E	T749 Fixed RNAV Route	2200AGL	18000MSL
E	Ottawa, ON a) [CAE]	1500AGL	18000MSL
E	T616 Fixed RNAV Route	2200AGL	18000MSL

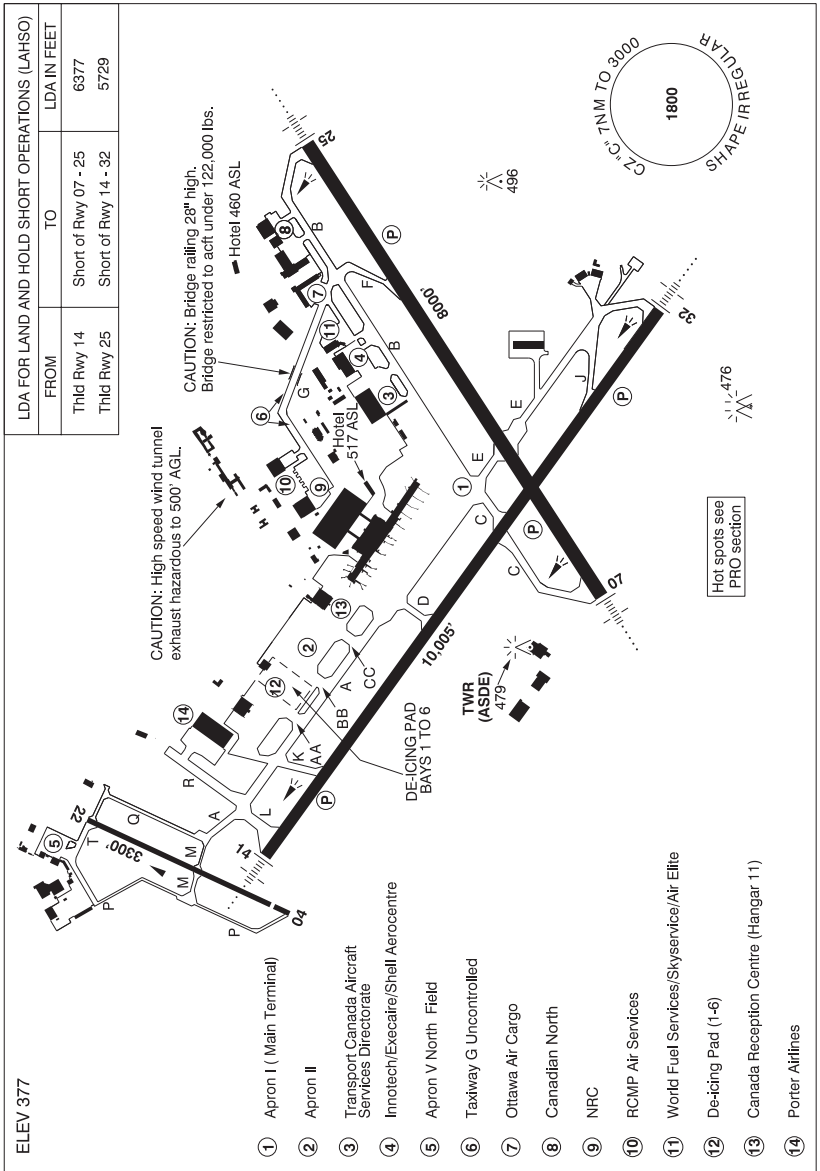
## NEAREST AERODROMES & DISTANCE FROM OPERATION

MACDONALD-CARTIER INTL (CYOW - AERODROME - Cert)	Lat: 45.323	Long: -75.667	9.548KM	5.156NM	NW
RIDEAU VALLEY AIR PARK (CPL3 - AERODROME - Reg)	Lat: 45.1	Long: -75.633	16.149KM	8.72NM	S
OTTAWA (CHILDREN'S HOSPITAL) (CPK7 - HELIPORT - Cert)	Lat: 45.401	Long: -75.65	17.603KM	9.505NM	N



OTTAWA / MACDONALD-CARTIER INTL ON

CYOW



<b>REF</b>	N45 19 21 W75 40 02 Adj S 14°W UTC-5(4) Elev 377' A1905 A5000 A5002 L06 L07 HI5 T2 CAP OC
<b>OPR</b>	Ottawa Macdonald-Cartier Intl Apt Authority 613-248-2200 H24 Cert
<b>PF</b>	A-1,2,3,6,7 C-4,5

## ONTARIO

## AERODROME / FACILITY DIRECTORY

## OTTAWA / MACDONALD-CARTIER INTL ON (Cont'd)

CYOW

<b>CUST</b>	AOE 888-226-7277 Pilots to call appropriate fixed base opr (FBO) prior to ldg on pvt adv freq & request cust be advised of intended location for clnc. Cust clnc at Apron II 12-05Z† 1 hr PN.
<b>FLT PLN</b>	
<b>    FIC</b>	(bil) Québec 866-GOMÉTÉO or 866-WXBRIEF (Toll free within Canada) or 866-541-4105 (Toll free within Canada & USA)
<b>    ACC</b>	Montreal 514-633-3211 or 800-633-1353, all Flt Plns, IFR tng PPR
<b>    WX</b>	METAR H24
<b>    DUAT</b>	TAF H24, issue times: 00, 03, 06, 09, 12, 15, 18 & 21Z. Ottawa Flying Club; World Fuel Services/Skyservice/Air Elite; Innotech/Execaire/Shell Aerocentre
<b>SERVICES</b>	
<b>    FUEL</b>	100LL, JA-1
<b>    OIL</b>	All
<b>    S</b>	1(ltd), 2,3,4(ltd)
<b>    ARFF</b>	DESIGNATED CAT 8
<b>    SUP FL</b>	LHOX PN, D & A-ice
<b>    PVT ADV</b>	Ottawa Flying Club (North Field) 123.35 12-02Z†; Innotech/Execaire/Shell Aerocentre (South Field) 123.0 11-03Z†; World Fuel Services/Skyservice/Air Elite 129.85 10-05Z†, O/T 613-739-3776
<b>    MIL CON</b>	Sky Service FBO Inc. 613-739-3776
<b>RWY DATA</b>	Rwy 14(140°)/32(320°) 10,005x197 grooved ASPH Rwy 07(071°)/25(251°) 8000x197 grooved ASPH Rwy 04(039°)/22(219°) 3300x75 ASPH Thld 04 displ 250'. Rwy 04 down 0.36%. Rstd to acft not exceeding 60,000 lbs. Sked pax svc not auth. RESA: 07/25 984'; 14/32 1000' Abv 15°C, no acft with more than 100 pax or over 85,000 lbs is auth to perform 180° turns on any rwy without perms 613-248-2013
<b>RWY CERT</b>	Rwy 14 RVR 1200(1/4sm)/Rwy 32 RVR 1200(1/4sm) AGN V Rwy 07 RVR 1200(1/4sm)/Rwy 25 RVR 1200(1/4sm) AGN V Rwy 04/22 AGN II
<b>TWY CERT</b>	Twy A: AGN V fr Apron I to Twy L & AGN II fr Twy L to Twy M Twy G AGN IIIB Twy: M, P, Q, T AGN II
<b>TWY</b>	Twy G: Uncontrolled. Bridge max weight 122,000 lbs. Twy M, P, Q and T rstd to acft not exceeding 60,000 lbs Twy R: Uncontrolled.
<b>APRON</b>	<b>De-icing Bays</b> Bay 1, 3, 4, 6 - May be used by acft with wingspans 36m (118') or less Bay 2 - May be used by acft with the wingspans 65m (213') or less. If CC used, the Taxi must be on the East taxi line only to/from Bay 2. If K used, the taxi must be on the West taxi line only to/from Bay 2. Bay 5 - May be used by acft with the wingspan 65m (213') or less. If CC used, taxi must be on the East taxi line only to/from Bay 5. If K used, the taxi must be on the West taxi line only to/from Bay 5.
<b>RCR</b>	Opr CRFI. PCN
<b>LIGHTING</b>	07-AN(TE HI) P3, 25-AN(TE HI) P3, 14-AN(TE HI) P3, 32-AN(TE HI) P3

## ONTARIO

## AERODROME / FACILITY DIRECTORY

## OTTAWA / MACDONALD-CARTIER INTL ON (Cont'd)

CYOW

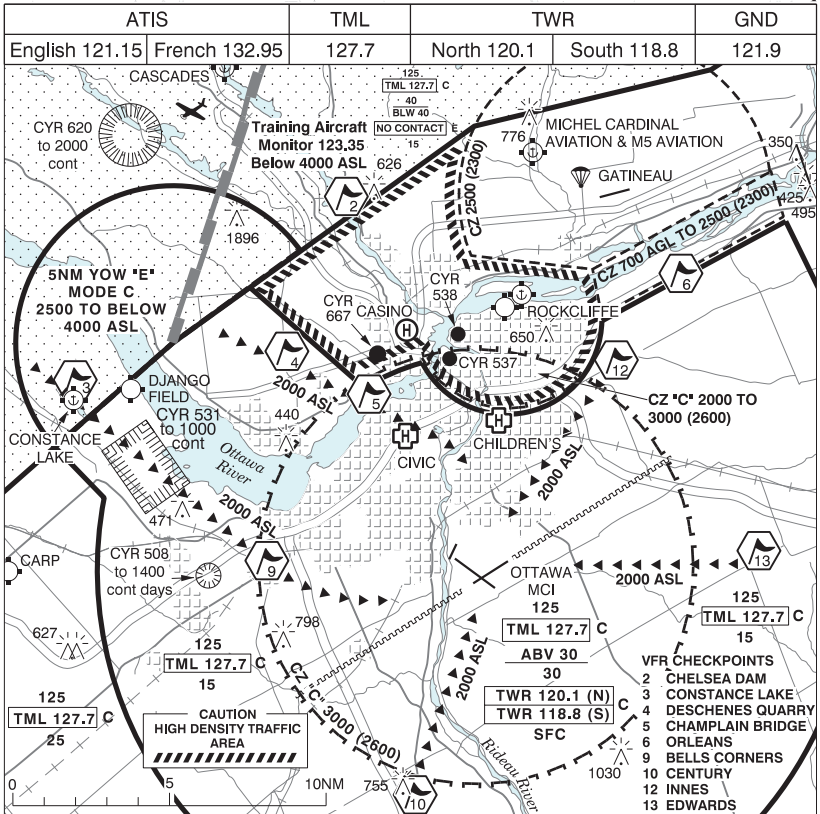
<b>COMM</b>	(bil)
<b>RCO</b>	Québec rdo 123.15 (FISE) 126.7 (bcst)
<b>ATIS</b>	(English) 121.15 (French) 132.95
<b>CLNC DEL</b>	Ottawa 119.4 <b>all dep acft to ctc clnc del</b>
<b>GND</b>	Ottawa 121.9
<b>TWR</b>	Ottawa 118.8 (VFR South) 120.1 (VFR North) 118.8 341.3 (V) (emerg only 613-248-3814)
<b>TML</b>	Ottawa 127.7
<b>ARR</b>	Ottawa ARR 135.15
<b>DEP</b>	Ottawa DEP 128.175
<b>NAV</b>	
<b>DME</b>	YOW 114.6 Ch 93 N45 26 30 W75 53 49 (482')
<b>DME</b>	IOW 109.5 Ch 32 N45 18 50 W75 40 01 (398')
<b>ILS</b>	IOW 109.5 (Rwy 07) RVR IRP 110.3 (Rwy 32) RVR
<b>PRO</b>	<p>Pilots should refer to Canadian Airport Charts (CAC) to obtain details on established hot spots, prior to operating on maneuvering areas. CAC are available for free on the NAV CANADA website.</p> <p><b>ATC:</b> <b>IFR CLNC ACKNOWLEDGEMENT:</b> IFR clnc read back with Ottawa twr clnc del shall include acft call sign, assigned SID name and transponder code. <b>CIRCUITS:</b> Rgt hand circuits Rwys 07, 14 &amp; 22 (CAR 602.96). <b>FOD:</b> The grade of sand which is used extensively on the aprt dur win may pose a FOD hazard to some acft. Formations and other line astern flt ops should adopt pro to avoid ingestion. <b>NOISE ABATEMENT PROCEDURES:</b> Turbojet and turbopan acft; refer to CAP; propeller acft: dep Rwy 32 to 1500 ASL before proceeding on crs. Circuit hgt 1500 ASL Rwys 04-14 to maintain 1500 ASL, wx permitting, until established on final apch. Tng flt permitted 0815-2359 lcl time, no VFR tng circuits on Rwy 14/32 below 1500 ASL, no practice rwy pro to Rwy 14. For practice IFR apchs to active IFR rwyws dur peak hrs 1315-1400Z± &amp; 1930-2400Z± Mon-Fri, ctc Montreal Flight Planning 514-633-3211 or 800-633-1353, for possible delays &amp; rwy info. Turbo-jet take-off and landing not permitted Rwy 04/22.</p> <p><b>VFR ARR/DEP ROUTES:</b> All VFR acft should follow arr/dep routes, unless otherwise specified by ATC. See OTTAWA M.-C.I. VFR DEPARTURE PROCEDURES CHART and OTTAWA M.-C.I. VFR ARRIVAL PROCEDURES CHART for additional details.</p> <p><b>DE-ICING OPERATIONS</b></p> <ol style="list-style-type: none"> <li>1. Ctc PAD CONTROL on 122.925 30 min prior to dep if de-icing is rqrd. Notify of any special treatments prior to taxi to CDF.</li> <li>2. Ctc Ottawa GND after pushback for taxi to CDF.</li> <li>3. Hold short of the CDF on K, AA, BB or CC and ctc PAD CONTROL for further taxi.</li> <li>4. Follow instructions and electronic sign boards to de-icing bays.</li> <li>5. Stop on the 2nd (illuminated) yellow stop bar, immediately set brakes and advise PAD CONTROL. DO NOT MOVE ACFT. This will allow positioning of trucks while you configure your aircraft.</li> <li>6. Once instructed switch to ICEMAN on 122.350, confirm brakes are set, confirm treatment and that acft is configured for treatment (engines at idle/props feathered/pacs off). If you can't reduce engines to idle ICEMAN must know, de-icing may not be possible with running engines.</li> <li>7. After de-icing, configure acft for taxi, however, DO NOT MOVE ACFT.</li> <li>8. Once instructed, ctc PAD CONTROL for taxi.</li> <li>9. Follow instructions to designated exit point. Holding short of Twy A, ctc GND 121.9</li> </ol>

## OTTAWA / MACDONALD-CARTIER INTL ON (Cont'd)

CYOW

<b>PRO (Cont'd)</b>	<p><b>VFR FLIGHTS IN OTTAWA MACDONALD-CARTIER CLASS C CZ AND TCA TERMINAL.</b></p> <p>In order to minimize delays, ATC frequency congestion and for better airspace management, as well as to improve safety, a procedure is available allowing VFR aircraft to obtain a transponder code prior to take off. This mandatory procedure applies to VFR aircraft that did not file a flight plan or flight itinerary with Nav Canada and wishing to penetrate or operate in the Ottawa/MacDonald-Cartier Class C and terminal Class C airspace. All acft not respecting mandatory transponder code procedure will not be accepted in Ottawa/MacDonald-Cartier Class C CZ and TCA C airspace.</p> <p>To obtain a transponder code:</p> <p>A discrete transponder code shall be obtained at least 30 minutes prior to the flight taking off toward Ottawa/MacDonald-Cartier Class C CZ and TCA airspace, by contacting the Montreal ACC at 866-VFR-CODE (866-837-2633), or the FIC at 1-866-GOMETEO or 1-866-WX BRIEF, and providing ATC with flight information. Aircraft departing CYUL, CYJN, CYHU, CYOW, CYMX or CYND will obtain their transponder code from the Control Tower or FSS.</p> <p>Flight procedure:</p> <ol style="list-style-type: none"> <li>1. Set your transponder to the assigned code prior to your first communication with ATC.</li> <li>2. To the extent possible, ctc ATC at least 5NM prior to entering Ottawa/MacDonald-Cartier Class C and terminal Class C airspace.</li> </ol> <p><b>OTTAWA CZ AIRSPACE SPLIT FOR VFR FLIGHTS</b></p> <p>YOW CZ is divided into two sectors with separate frequencies. Contact OTTAWA TWR on 120.1 when North of Rwy 07/25 extended centreline and OTTAWA TWR on 118.8 when South of Rwy 07/25 extended centreline or on final for Rwy 07/25. Holding short of Rwy 04/22, contact OTTAWA TWR on 120.1 when ready for take-off.</p>
<b>CAUTION</b>	Migratory birds in vic of aprt Mar-Apr, Sep-Oct.

**OTTAWA M.-C.I. VFR ARRIVAL PROCEDURES CHARTS**



**PROCEDURES:**

- Bells Corners Arrival:** Proceed via W side of Ottawa River to CONSTANCE LAKE, then direct BELLS CORNERS at 2000 ASL.
- Champlain Bridge Arrival:** Proceed via E side of Ottawa River to DESCHENES QUARRY & then direct CHAMPLAIN BRIDGE at 2000 ASL.
- Century Arrival:** Proceed towards CENTURY at 2000 ASL.
- Edwards Arrival:** Proceed towards EDWARDS at 2000 ASL.
- Innes Arrival:** Proceed towards INNES at 2000 ASL.





## ONTARIO

## AERODROME / FACILITY DIRECTORY

## OTTAWA M.-C.I. VFR TERMINAL PROCEDURES CHART (Cont'd)

NAME	IDENT	LAT/LONG
BELLS CORNERS	VCBCR	N45° 19' 12" W075° 50' 00"
CENTURY	VCNTY	N45° 11' 22" W075° 43' 16"
CHAMPLAIN BRIDGE	VCCHB	N45° 24' 30" W075° 45' 30"
CHELSEA DAM	VCHL	N45° 30' 48" W075° 46' 32"
CONSTANCE LAKE	VCCON	N45° 25' 00" W075° 59' 00"
CUMBERLAND	VCMBL	N45° 31' 00" W075° 24' 36"
DESCHENES QUARRY	VCQRY	N45° 25' 48" W075° 49' 12"
EDWARDS	VCEDW	N45° 19' 23" W075° 27' 58"
INNES	VCINS	N45° 25' 25" W075° 34' 47"
LAC MCGREGOR	VCPOU	N45° 38' 37" W075° 38' 52"
ORLEANS	VCORL	N45° 28' 34" W075° 31' 27"
RUSSELL	VCRSL	N45° 15' 27" W075° 22' 00"
THURSO	VCGUY	N45° 35' 55" W075° 14' 43"

**VFR FLIGHTS IN OTTAWA MACDONALD-CARTIER CLASS C CZ AND TCA TERMINAL**

In order to minimize delays, ATC frequency congestion and for better airspace management, as well as to improve safety, a procedure is available allowing VFR aircraft to obtain a transponder code prior to take off. This mandatory procedure applies to VFR aircraft that did not file a flight plan or flight itinerary with Nav Canada and wishing to penetrate or operate in the Ottawa/MacDonald-Cartier Class C and terminal Class C airspace. All acft not respecting mandatory transponder code procedure will not be accepted in Ottawa/MacDonald-Cartier Class C CZ and TCA C airspace.

To obtain a transponder code:

A discrete transponder code shall be obtained at least 30 minutes prior to the flight taking off toward Ottawa/MacDonald-Cartier Class C CZ and TCA airspace, by contacting the Montreal ACC at 866-VFR-CODE (866-837-2633), or the FIC at 1-866-GOMETEO or 1-866-WX BRIEF, and providing ATC with flight information. Aircraft departing CYUL, CYJN, CYHU, CYOW, CYMX or CYND will obtain their transponder code from the Control Tower or FSS.

Flight procedure:

1. Set your transponder to the assigned code prior to your first communication with ATC.
2. To the extent possible, ctc ATC at least 5NM prior to entering Ottawa/MacDonald-Cartier Class C and terminal Class C airspace.

## ONTARIO

## AERODROME / FACILITY DIRECTORY

## KARS / RIDEAU VALLEY AIR PARK ON

CPL3

<b>REF</b>	N45 06 W75 38 3S 14°W UTC-5(4) Elev 286' A1905 A5000 A5002	
<b>OPR</b>	Chris Williams 613-296-3391 Reg PPR	
<b>PF</b>	C-1,2,4,5 D-3,6	
<b>FLT PLN</b>	(bil) <b>FIC</b> Québec 866-GOMÉTÉO or 866-WXBRIEF (Toll free within Canada) or 866-541-4105 (Toll free within Canada & USA)	
<b>RWY DATA</b>	Rwy 08/26 1800x100 GRASS <b>RCR</b> Opr No win maint. May be soft in spring.	
<b>COMM</b>	<b>ATF</b> tfc 123.4 5NM 3300 ASL excluding the airspace that lies within Ottawa TCA class C airspace	
<b>PRO</b>	Glider activity in area.	

ONTARIO

AERODROME / FACILITY DIRECTORY

**OTTAWA (CHILDREN'S HOSP) ON (Heli)**

**CPK7**

<b>REF</b>	N45 24 04 W75 39 01 Adj 13°W (2015) UTC-5(4) Elev 272' A1905 A5000 A5002	
<b>OPR</b>	Children's Hosp of Eastern Ontario 613-737-7600 Cert PPR	
<b>FLT PLN</b>	(bil) <b>FIC</b> Québec 866-GOMÉTÉO or 866-WXBRIEF (Toll free within Canada) or 866-541-4105 (Toll free within Canada & USA)	
<b>HELI DATA</b>	FATO 86' dia ASPH TLOF 34' x 34' ASPH Safety Area 114' dia Max heli overall length 56.5'	
<b>RCR</b>	Opr	
<b>LIGHTING</b>	DR RY (LO)	
<b>COMM</b>	<b>RCO</b> Québec rdo (Ottawa/M.-C. Intl) 123.15 (FISE) 126.7 (bcst) <b>TWR</b> Ottawa 118.8	
<b>PRO</b>	Arr/dep 209° fr heli, slope 12% (H1), day/night use. All acft to park with exhaust away fr bldg at all times.	