
FLIGHT PLAN & SITE SURVEY

D 568-5008 NORTH OF SUPERIOR FLYERS- PINEVIEW
AIRPARK

May 22, 2026



IMPORTANT NOTICE

Please ensure you have received all required authorizations prior to flight. This Site Survey was created using RPAS Wilco. The user accepts all responsibility for the accuracy of the information.

Terms & Conditions: rpswilco.com/#tnc

Mission Information

D 568-5008 NORTH OF SUPERIOR FLYERS- PINEVIEW AIRPARK

FLIGHT DETAILS

Reference No:	MAAC-568-5008
Project Name:	NORTH OF SUPERIOR FLYERS
Pilot Name:	MAAC
Pilot Certificate:	
Mission Type:	VLOS
Flight Start:	May 22, 2026 02:46 PM
Flight End:	May 22, 2026 03:46 PM

LOCATION DETAILS

Flight Address:	PINEVIEW AIRPARK
Latitude:	48° 23' 32.30" N (48.392)
Longitude:	89° 35' 0.20" W (-89.583)
Altitude / Radius:	400 ft / 926 m (0.5 nm)
Classification:	UNCONTROLLED
FIR / Contact:	CZWG / 204-983-8338

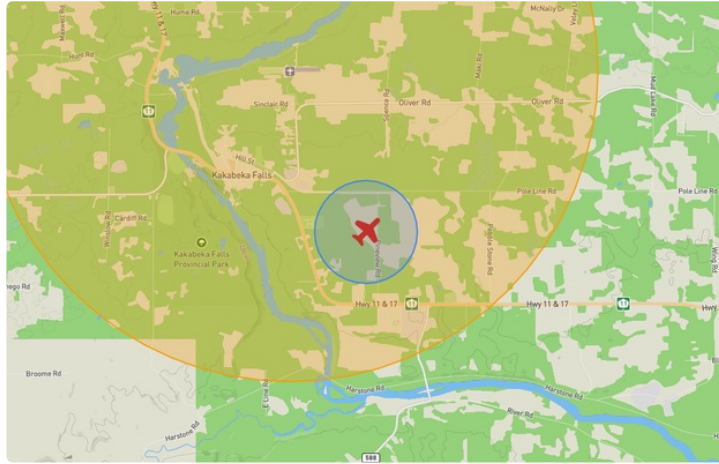
REPORT CONTENTS

Site Survey • Obstacles (if available) • Nearby Aerodromes • Canadian Aviation Regulations • GFA • Aerodrome Supplements • METAR & TAF • NOTAMs • CFS





Flight Map & MODEL Details

MISSION LOCATION SURVEY

FLIGHT AREA MAP



MISSION LOCATION DETAILS

ROLE	LATITUDE	LONGITUDE
 MODEL	48° 23' 32.30" N 48.392	89° 35' 0.20" W -89.583
 Pilot		
 Payload Op.		
 Observer		

Airspace Classification

MISSION LOCATION SURVEY

AIRSPACE MAP



OVERLYING AIRSPACES

Class	Name	Floor	Ceiling
E	T331 Fixed RNAV Route	2200AGL	18000MSL
E	Thunder Bay, ON b) [CAE]	3000MSL	12500MSL
E	T765-3 Fixed RNAV Route	2200AGL	18000MSL
E	Thunder Bay, ON [TA]	2000MSL	12500MSL
E	Thunder Bay, ON c) [CAE]	4000MSL	12500MSL
E	3.3.1-49 [TA]	3000MSL	12500MSL
E	T675 Fixed RNAV Route	2200AGL	18000MSL
D	Thunder Bay, ON [CZ]	SFC	4000MSL
E	T681 Fixed RNAV Route	2200AGL	18000MSL
B	Thunder Bay, ON d) [CAE]	12500MSL	18000MSL
E	T702 Fixed RNAV Route	2200AGL	18000MSL
E	T776 Fixed RNAV Route	2200AGL	18000MSL
E	T810 Fixed RNAV Route	2200AGL	18000MSL

NEAREST AERODROMES & DISTANCE FROM OPERATION

KAKABEKA FALLS (CKG8 - AERODROME - Reg)	Lat: 48.418	Long: -89.602	3.202KM	1.729NM	NW
MARTIN'S LANDING (CML5 - AERODROME - Reg)	Lat: 48.293	Long: -89.543	11.402KM	6.157NM	S
THUNDER BAY (CYQT - AERODROME - Cert)	Lat: 48.372	Long: -89.322	19.461KM	10.508NM	E

ONTARIO

AERODROME / FACILITY DIRECTORY

KAKABEKA FALLS ON

CKG8

REF	N48 25 06 W89 36 07 1NE 2°W UTC-5(4) Elev 1000' A5001 A5008	
OPR	Kakabeka Falls Flying Club Inc 807-474-0970 or 807-627-7075 Reg PPR	
PF	C-2	
FLT PLN	Pilots to open/close VFR flt plan with London rdo, FISE or by phone	
FIC	London 866-WXBRIEF (Toll free within Canada) or 866-541-4104 (Toll free within Canada & USA)	
RWY DATA	Rwy 09(088°)/27(268°) 2120x130 GRASS	
RCR	Opr No win maint. Rwy soft when wet.	
COMM		
ATF	tfc 123.0 3NM 3000 ASL	
CAUTION	Extv flt tng within 35NM W & N of Thunder Bay CZ to 6000 ASL. Seaplane tfc Adj N.	

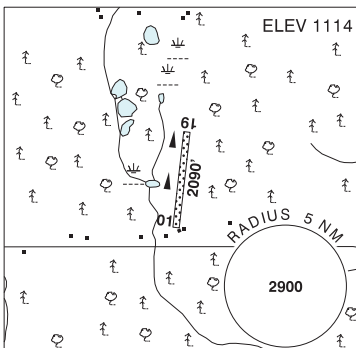
ONTARIO

AERODROME / FACILITY DIRECTORY

THUNDER BAY (MARTIN'S LANDING) ON

CML5

REF	N48 17 37 W89 32 36 14WSW 3°W (2016) UTC-5(4) Elev 1114' A5001 A5008
OPR	Richard A. Martin 807-344-0071 Reg PPR
FLT PLN	Pilots to open/close VFR fit plan with London rdo, FISE or by phone London 866-WXBRIEF (Toll free within Canada) or 866-541-4104 (Toll free within Canada & USA)
SERVICES	
OIL	20W50, 80, 100
S	1,4,5,6,7
RWY DATA	Rwy 01(010°)/19(190°) 2090x80 GRASS/SNOW
RCR	Opr Rwy soft when wet
COMM	
ATF	tfc 122.8 3NM 3200 ASL
PRO	Rgt hand circuits Rwy 01 (CAR 602.96). Circuit hgt 2100 ASL all runways.
CAUTION	Trees 50 AGL N & S of rwy

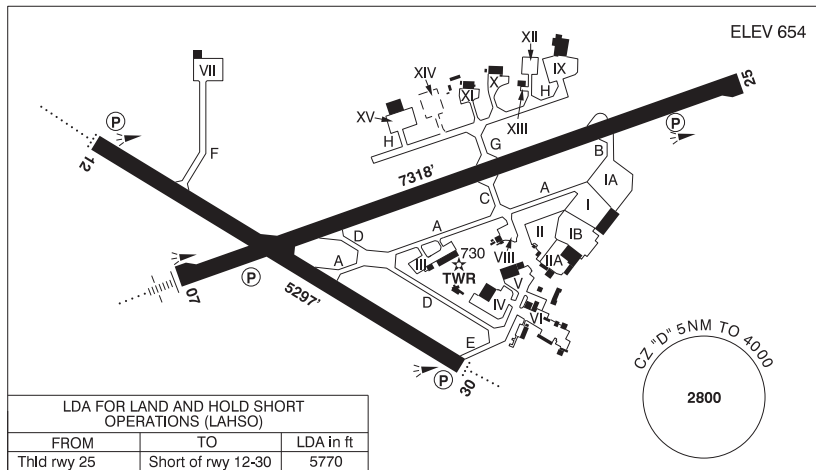


ONTARIO

AERODROME / FACILITY DIRECTORY

THUNDER BAY ON

CYQT



REF	N48 22 19 W89 19 18 Adj SW 4°W (2014) UTC-5(4) Elev 654' A5001 A5008 L04 H14 T2 CAP
OPR	Thunder Bay Intl Apts Authority Inc (TBIAAI) 807-473-2600 1000-0430Z‡ Cert Ldg fees
PF	A-1,2,3,6,7 C-4,5
CUST	AOE/40 888-226-7277 13-05Z‡
FLT PLN	Pilots to open/close VFR flt plan with London rdo, FISE or by phone
FIG	London 866-WXBRIEF (Toll free within Canada) or 866-541-4104 (Toll free within Canada & USA)
WX	METAR H24. TAF H24, issue times: 02, 08, 14, 20Z. WxCam
SERVICES	
FUEL	100LL, JA-1 (FSII avbl), HPR 1030-0330Z‡
OIL	All & Turbo 35
S	1,2,3,4,5,6,7
ARFF	DESIGNATED CAT 7 1000-0430Z‡ O/T call out chg, etc Duty Mgr 807-625-0595, aprt clsd to acft 20 seats & abv, exc for diversions or as an altn A/D without PPR.
SUP FL	LHOX
JASU	CE14
PVT ADV	Thunder Bay Flight Refuelling (World Fuel Services) 123.2 1030-0330Z‡ O/T 807-577-1178; SkyFill Aviation Refuelling Inc (Shell) 122.85 0930-0130Z‡ O/T 807-475-5915
MIL CON	SkyFill Aviation Refuelling Inc (Shell) 122.85 807-475-5915

ONTARIO

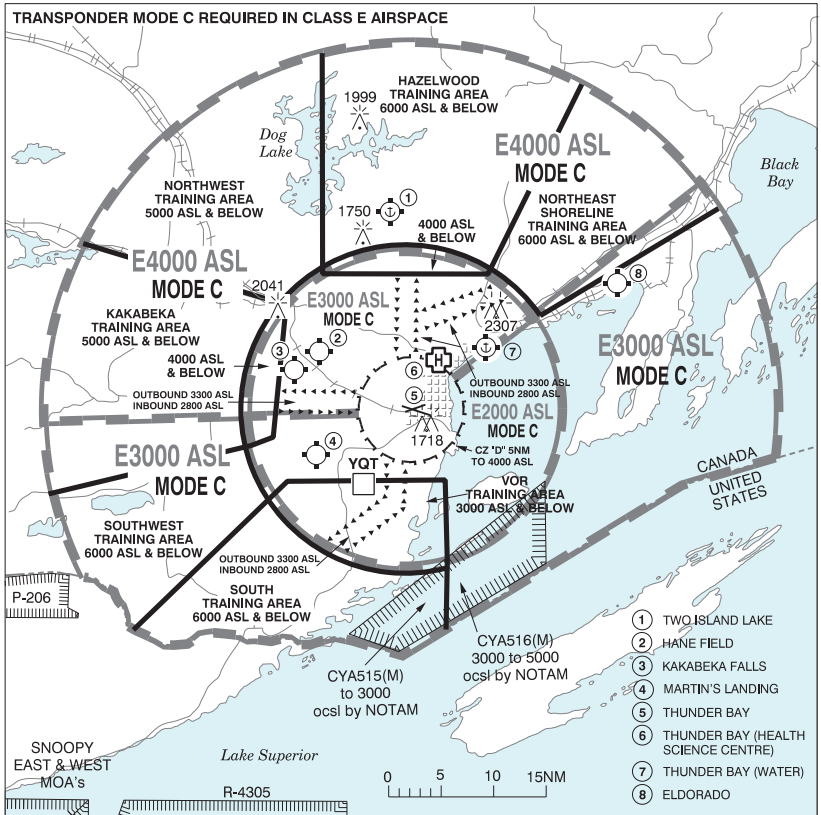
AERODROME / FACILITY DIRECTORY

THUNDER BAY ON (Cont'd)

CYQT

RWY DATA	Rwy 07(074°)/25(254°) 7318x148 ASPH Rwy 12(125°)/30(305°) 5297x150 ASPH RESA: 07/25 492' RESA: 12 321'; 30 492'
RWY CERT	Rwy 07 RVR 1200(1/4sm)/Rwy 25 RVR 1200(1/4sm) AGN IV Rwy 12 RVR 1200(1/4sm)/Rwy 30 RVR 1200(1/4sm) AGN IIIB
TWY CERT	Twy: A, C, D AGN IIIB
TWY	Twy E (NE of D) uncontrolled. Twy F extends for 225' then changes to apron VII. Private, uncontrolled beyond hold line. Twy H: Private.
APRON	Apron I rstd to sked commercial air carrier by stand assignment only fr TBIAAI. Acft shall not taxi between ATB and pushed back acft. All sked acft shall be directed into prkg posn by Marshalling Services. Taxiing acft to remain on taxilanes. Uncontrolled. Apron II: Itinerant acft prkg. Uncontrolled. Apron III: E entrance ltd to gnd tfc. Aprons III, IV, V, VII, VIII, IX, X, XI, XII, XIII, XV: Private and uncontrolled. Aprons VI: Uncontrolled.
RCR	Opr 1030-0500Z† Nov 15-Apr 15, O/T 2 hr PN, call out chg. CRFI PCN Win maint 1030-0500Z†.
LIGHTING	07-AN (TE HI) P2, 25-(TE HI) P2, 12-AD AS(TE ME) P2, 30-AD(non-std 1700') AS(TE ME) P2
COMM	
RADIO	118.1 PTC avbl (E) 04-11Z† (emerg only 807-473-4311)
RCO	London rdo 122.375 (FISE) 126.7 (bcst)
ATIS	128.8
GND	121.9 11-04Z†
TWR	118.1 (E) 11-04Z† (emerg only 807-473-5252) Admin/Supervisor 807-474-4245
MF	rdo 118.1 04-11Z† 5NM 4000 ASL (CAR 602.98)
ARR	Winnipeg Ctr 119.2
DEP	Winnipeg Ctr 119.2
PAL	Winnipeg Ctr 132.125
NAV	
DME	YQT 114.1 Ch 88 N48 15 14 W89 26 15 (1641')
DME	YTV 117.8 Ch 125 N48 22 11 W89 19 48 (676')
ILS	IQT 109.5 (Rwy 07) RVR
PRO	Rgt hand circuits Rwys 25 & 30 (CAR 602.96). See CAP for NOISE & NIGHT restrictions. ATS PPR REQUIREMENTS: Ctc Winnipeg ACC 204-984-5979 for the following; - IFR tng and Photo Survey within Thunder Bay Class E Transponder Airspace - VFR tng conducting simulated holds and inst apch VFR TRAINING PROCEDURES - See VTPC
CAUTION	Heli flood lgts 30 AGL N side of apron II. Lgtd obst 746 ASL 0.5NM NE Thld 25 (intxn Thunder Bay Express Way & Arthur street). Terrain rises abruptly to 1600 ASL 2NM SE of A/D. Extv fit tng within 35NM W & N of CYQT CZ to 6000 ASL. Extv bird and wildlife activity in vic of A/D. Railroad tracks SW of A/D in close proximity.

THUNDER BAY VFR TERMINAL PROCEDURES CHART

**TRAINING AREA ARRIVALS**

- Join arrival route as close as possible to starting point.
- Fly the route on the depicted track and altitude until advised by Thunder Bay Tower.

TRAINING AREA DEPARTURES

- Join departure route as close as possible to starting point.
- Fly the route on the depicted track and altitude.

CAUTION TO NON-PARTICIPATING PILOTS: FREQUENT USE OF DEPICTED VFR ROUTES