
FLIGHT PLAN & SITE SURVEY

H 818-5161 PENDER ISLAND ELECTRIC FLYERS- Bedwell
Harbour Rd

May 22, 2026



IMPORTANT NOTICE

Please ensure you have received all required authorizations prior to flight. This Site Survey was created using RPAS Wilco. The user accepts all responsibility for the accuracy of the information.

Terms & Conditions: rpswilco.com/#tnc

Mission Information

H 818-5161 PENDER ISLAND ELECTRIC FLYERS- BEDWELL HARBOUR RD

FLIGHT DETAILS

Reference No:	MAAC-818-5161
Project Name:	PENDER ISLAND ELECTRIC FLYERS
Pilot Name:	MAAC
Pilot Certificate:	
Mission Type:	VLOS
Flight Start:	May 22, 2026 11:49 AM
Flight End:	May 22, 2026 12:49 PM

LOCATION DETAILS

Flight Address:	Bedwell Harbour Rd
Latitude:	48° 47' 36.70" N (48.794)
Longitude:	123° 17' 0.80" W (-123.284)
Altitude / Radius:	400 ft / 926 m (0.5 nm)
Classification:	UNCONTROLLED
FIR / Contact:	CZVR / 604-586-4500

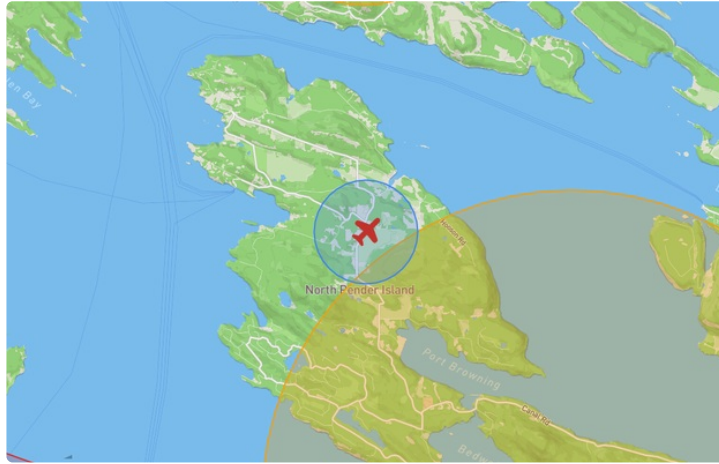
REPORT CONTENTS

Site Survey • Obstacles (if available) • Nearby Aerodromes • Canadian Aviation Regulations • GFA • Aerodrome Supplements • METAR & TAF • NOTAMs • CFS





Flight Map & MODEL Details

MISSION LOCATION SURVEY

FLIGHT AREA MAP



MISSION LOCATION DETAILS

ROLE	LATITUDE	LONGITUDE
 MODEL	48° 47' 36.70" N 48.794	123° 17' 0.80" W -123.284
 Pilot		
 Payload Op.		
 Observer		

Airspace Classification

MISSION LOCATION SURVEY

AIRSPACE MAP



OVERLYING AIRSPACES

Class	Name	Floor	Ceiling
D	Vancouver, BC [TSP]	1200MSL	2500MSL
E	Strait of Georgia, BC b) [TA]	1200MSL	18000MSL
D	Vancouver, BC a) [TCA]	1200MSL	2500MSL
E	Vancouver, BC [TSP]	1200MSL	12500MSL
E	V338 VHF/UHF Airway	2200AGL	18000MSL
C	Vancouver, BC d) [TCA]	2500MSL	4500MSL
E	T645-2 Fixed RNAV Route	2200AGL	18000MSL
C	Vancouver, BC l) [TCA]	4500MSL	6500MSL
C	Vancouver, BC s) [TCA]	6500MSL	8500MSL
C	Vancouver, BC t) [TCA]	8500MSL	9500MSL
C	Vancouver, BC u) [TCA]	9500MSL	12500MSL
B	Vancouver, BC v) [TCA]	12500MSL	18000MSL
E	T800 Fixed RNAV Route	2200AGL	18000MSL
E	T719 Fixed RNAV Route	2200AGL	18000MSL
C	Vancouver, BC m) [TCA]	700AGL	6500MSL
C	Victoria, BC [CZ]	SFC	2500MSL
F	CYA145 (H) VICTORIA/SALTSPRING ISLAND, BC	SFC	2500MSL
E	Vancouver, BC c) [TA]	700AGL	18000MSL
C	Vancouver, BC o) [TCA]	3500MSL	6500MSL
E	Strait of Georgia, BC a) [TA]	1200MSL	18000MSL
E	Victoria Harbour, BC [TA]	700AGL	18000MSL
E	Victoria Harbour, BC [TSP]	700AGL	12500MSL

NEAREST AERODROMES & DISTANCE FROM OPERATION

BEDWELL HARBOUR (CAB3 - WATERDROME - Reg)	Lat: 48.75	Long: -123.233	6.081KM	3.283NM	SE
MAYNE ISLAND (MEDICAL EMERGENCY) (CBF5 - HELIPORT - Reg)	Lat: 48.847	Long: -123.284	5.909KM	3.191NM	N
BEDDIS BEACH (CBB4 - HELIPORT - Reg)	Lat: 48.8	Long: -123.424	10.284KM	5.553NM	W

CANADA WATER AERODROME SUPPLEMENT

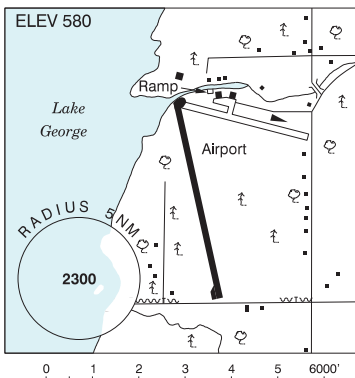
Effective 0901Z 19 March 2026 to 0901Z 18 February 2027

B12 AERODROME/FACILITY DIRECTORY

BAR RIVER ON

CNE5

REF	N46 25 W84 06 3SW 7°W UTC-5(4) Elev 580' A5001
OPR	Springer Aerospace Ltd 1-877-603-6633, 705-822-9463 Reg PPR
FLT PLN	
FIC	London 866-WXBRIEF (Toll free within Canada) or 866-541-4104 (Toll free within Canada & USA)
CUST	AOE/CAN/SEAPL
SERVICES	PN
FUEL	100LL, JA-1
OIL	All
S	5
A/D DATA	Open water May-Nov. Ramp.25 NM up Bar River.
COMM	
RCO	London rdo (Sault Ste. Marie) 123.475 (FISE) 126.7 (bcst)
ATF	UNICOM ltd hrs O/T tfc 122.8 5NM 3600 ASL
NAV	
VOR/DME	SAULT STE. MARIE SSM 112.2 Ch 59 (T) N46 24 43 W84 18 53

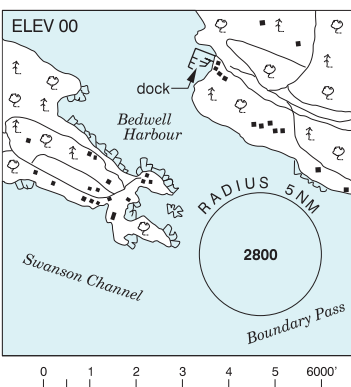


BEATTIE LAKE ON — See WIARTON / BEATTIE LAKE

BEDWELL HARBOUR BC

CAB3

REF	N48 45 W123 14 17°E (2013) UTC-8(7) Elev 00' VTA A5004
OPR	Canada Border Services Agency 1-888-CANPASS (226-7277) Reg PPR
PF	A-1 B-2,5 C-3,4 D-6
CUST	AOE/15/SEAPL 888-226-7277 17-01Z† 1 May - Thu before Victoria Day, 16-04Z† Fri before Victoria Day - Labour Day, 17-01Z† Tue after Labour Day - 30 Sep.
FLT PLN	
FIC	Kamloops 866-WXBRIEF (Toll free within Canada) or 866-541-4101 (Toll free within Canada & USA)
SERVICES	S 7 at opr discretion.
A/D DATA	Open water all year. Tidal range 16'. Sheltered harbour & sandy beach. Ltd moorage, no long term prkg.



CANADA WATER AERODROME SUPPLEMENT

Effective 0901Z 19 March 2026 to 0901Z 18 February 2027

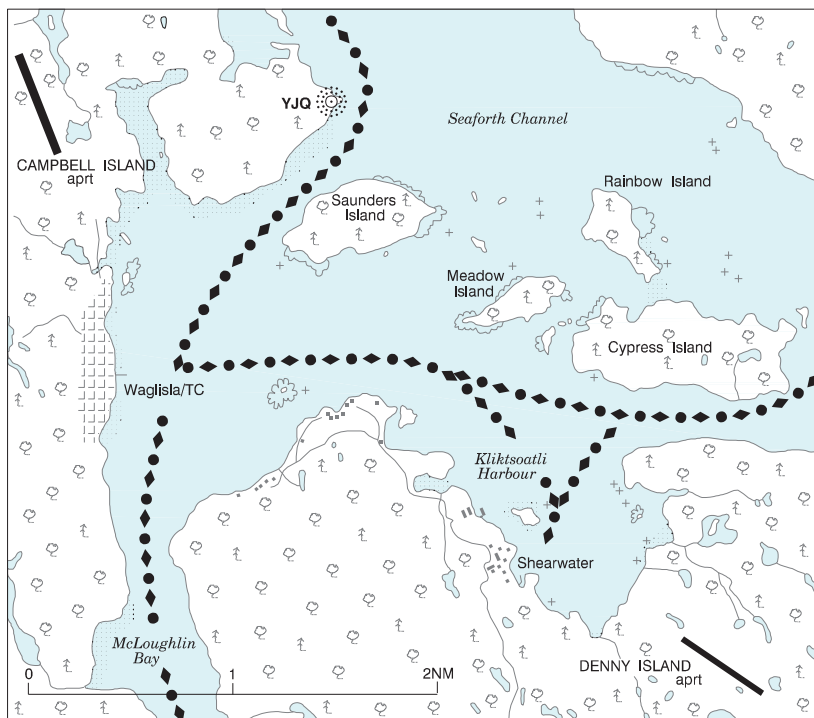
AERODROME/FACILITY DIRECTORY B13

BEDWELL HARBOUR BC (Cont'd)

CAB3

COMM	TWR	Victoria 14-08Z± O/T tfc 119.1 abv 1200 ASL
	ATF	tfc 123.2 5NM 1200 ASL exc area within Victoria Intl CZ
	TML	Victoria 127.8 abv 2500 ASL
RESTRIC-TIONS	DOMESTIC FLTS PROHIBITED Open to intl flts only	

BELLA BELLA VFR TERMINAL PROCEDURES CHART



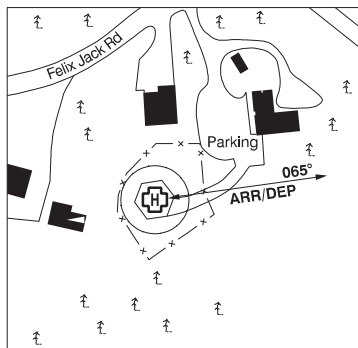
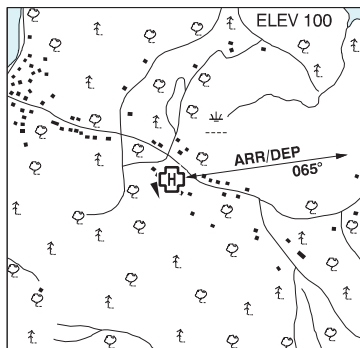
BELLA BELLA / SHEARWATER BC

CAW8

REF	N52 09 W128 05 19°E (2012) UTC-8(7) Elev 00' A5004 A5013
OPR	Shearwater Marine Ltd 250-957-2305/2666 Reg
PF	B-1,2,5 C-4
FLT PLN	
FIC	Kamloops 866-WXBRIEF (Toll free within Canada) or 866-541-4101 (Toll free within Canada & USA)
SERVICES	
FUEL	100LL, JA-1
A/D DATA	Ramp.
COMM	
RCO	Pacific rdo (Campbell Island) 123.475 (FISE) 126.7 (bcst)
ATF	tfc 122.8 5NM 3200 ASL

MAYNE ISLAND (MEDICAL EMERGENCY) BC (Heli)

CBF5



REF	N48 50 48 W123 17 03 Adj 17°E (2014) UTC-8(7) Elev 100' VTA A5004
OPR	Mayne Island Fire Dept. 250-539-5156 Reg PPR
PF	A-1,3,4 C-2,5
FLT PLN	
FIC	Kamloops 866-WXBRIEF (Toll free within Canada) or 866-541-4101 (Toll free within Canada & USA)
HELI DATA	FATO 86' dia CONC/GRASS TLOF 45' dia hexagonal CONC Safety Area 115' dia Max heli overall length 57'
RCR	MEDEVAC only
LIGHTING	DR RW no aiming point (LO) PN Opr
COMM	
ATF	tfc 123.2 5NM 1200 ASL
PRO	Arr/dep 065° fr heli, slope 12%, day/night use.
CAUTION	Trees & rising gnd all quad.

BRITISH COLUMBIA

AERODROME / FACILITY DIRECTORY

BEDDIS BEACH BC (Heli)**CBB4**

REF	N48 48 00 W123 25 25 17°E (2014) UTC-8(7) Elev 717' VTA A5004	
OPR	Pat and Rosemarie Keough 250-653-4993 Reg PPR	
PF	A-1 C-2,5 D-3,4,6	
FLT PLN	FIC Kamloops 866-WXBRIEF (Toll free within Canada) or 866-541-4101 (Toll free within Canada & USA)	
SERVICES	4,5	
HELI DATA	FATO/TLOF 26' dia CONC elevated Safety Area 66' dia Max heli overall length 55.8'	
RCR	Opr 15-05Z‡ not always monitored	
COMM	TWR Victoria 119.1(outer) (E) 14-08Z‡ O/T Victoria terminal 127.8 ATF tfc 123.2 5NM 1200 ASL Excluding area within Victoria Intl CZ TML Victoria 127.8 abv 2500 ASL	
CAUTION	Subject to erratic winds	