

---

# FLIGHT PLAN & SITE SURVEY

---

H 797-5256 RICHMOND RC FLYERS CLUB- MANOAH  
STEVES PARK

May 22, 2026



## IMPORTANT NOTICE

Please ensure you have received all required authorizations prior to flight. This Site Survey was created using RPAS Wilco. The user accepts all responsibility for the accuracy of the information.

Terms & Conditions: [rpswilco.com/#tnc](https://rpswilco.com/#tnc)

# Mission Information

H 797-5256 RICHMOND RC FLYERS CLUB- MANOAH STEVES PARK

## FLIGHT DETAILS

Reference No:	<b>MAAC-797-5256</b>
Project Name:	<b>RICHMOND RC FLYERS CLUB</b>
Pilot Name:	<b>MAAC</b>
Pilot Certificate:	
Mission Type:	<b>VLOS</b>
Flight Start:	<b>May 22, 2026 11:51 AM</b>
Flight End:	<b>May 22, 2026 12:51 PM</b>

## LOCATION DETAILS

Flight Address:	<b>MANOAH STEVES PARK</b>
Latitude:	<b>49° 8' 21.70" N ( 49.139 )</b>
Longitude:	<b>123° 11' 17.90" W ( -123.188 )</b>
Altitude / Radius:	<b>400 ft / 926 m ( 0.5 nm )</b>
Classification:	<b>UNCONTROLLED</b>
FIR / Contact:	<b>CZVR / 604-586-4500</b>

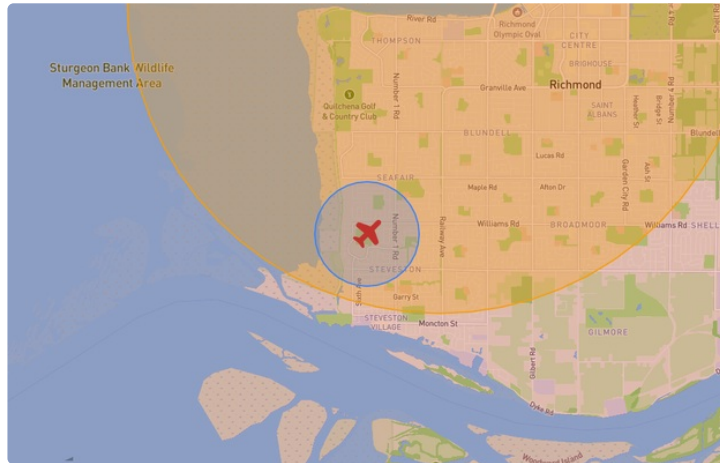
## REPORT CONTENTS

Site Survey • Obstacles (if available) • Nearby Aerodromes • Canadian Aviation Regulations • GFA • Aerodrome Supplements • METAR & TAF • NOTAMs • CFS





# Flight Map & MODEL Details

MISSION LOCATION SURVEY

## FLIGHT AREA MAP



## MISSION LOCATION DETAILS

ROLE	LATITUDE	LONGITUDE
 MODEL	49° 8' 21.70" N 49.139	123° 11' 17.90" W -123.188
 Pilot		
 Payload Op.		
 Observer		

# Airspace Classification

MISSION LOCATION SURVEY

## AIRSPACE MAP



## OVERLYING AIRSPACES

Class	Name	Floor	Ceiling
C	Vancouver, BC l) [TCA]	4500MSL	6500MSL
C	Vancouver, BC s) [TCA]	6500MSL	8500MSL
C	Vancouver, BC t) [TCA]	8500MSL	9500MSL
C	Vancouver, BC u) [TCA]	9500MSL	12500MSL
B	Vancouver, BC v) [TCA]	12500MSL	18000MSL
C	Vancouver, BC d) [TCA]	2500MSL	4500MSL
E	V342-1 VHF/UHF Airway	2200AGL	18000MSL
E	T800 Fixed RNAV Route	2200AGL	18000MSL
C	Vancouver, BC c) [TCA]	1200MSL	2500MSL
E	T775 Fixed RNAV Route	2200AGL	18000MSL
E	V304 VHF/UHF Airway	2200AGL	18000MSL
E	V347 VHF/UHF Airway	2200AGL	18000MSL
C	Boundary Bay, BC a) [CZ]	SFC	1000MSL
C	Boundary Bay, BC b) [CZ]	1000MSL	2500MSL
C	Vancouver, BC [CZ]	SFC	2500MSL
E	V317-2 VHF/UHF Airway	2200AGL	18000MSL
E	V330 VHF/UHF Airway	2200AGL	18000MSL
E	T701-1 Fixed RNAV Route	2200AGL	18000MSL
C	Vancouver Outer Control Zone, BC [CZ]	800MSL	2500MSL
D	Vancouver Outer Control Zone, BC [CZ]	SFC	800MSL
E	T618 Fixed RNAV Route	2200AGL	18000MSL
E	V338 VHF/UHF Airway	2200AGL	18000MSL
D	Vancouver, BC [TSP]	1200MSL	2500MSL
D	Vancouver, BC a) [TCA]	1200MSL	2500MSL
E	Vancouver, BC [TSP]	1200MSL	12500MSL
C	Vancouver, BC q) [TCA]	3200MSL	6500MSL
C	Vancouver Harbour, BC [CZ]	SFC	2500MSL
E	Pitt Meadows, BC b) [CAE]	2000MSL	18000MSL

**NEAREST AERODROMES & DISTANCE FROM OPERATION**

VANCOUVER INTL (CAM9 - WATERDROME - Reg)	Lat: 49.177	Long: -123.171	4.374KM	2.362NM	N
VANCOUVER INTL (CYVR - AERODROME/HELIPORT - Cert)	Lat: 49.194	Long: -123.183	6.14KM	3.315NM	N
VANCOUVER (CHILDREN AND WOMEN'S CENTRE) (CAK7 - HELIPORT - Cert)	Lat: 49.244	Long: -123.127	12.42KM	6.706NM	N

# CANADA WATER AERODROME SUPPLEMENT

Effective 0901Z 19 March 2026 to 0901Z 18 February 2027

AERODROME/FACILITY DIRECTORY B277

## VANCOUVER INTL BC

CAM9

<b>REF</b>	N49 10 37 W123 10 15 Adj SW 17°E (2013) UTC-8(7) Elev 00' VTA A5004 T1	
<b>OPR</b>	Vancouver Intl Aprt Authority 604-207-7022; Seair Seaplanes 604-273-8900 or 1-800-447-3247 Reg	
<b>PF</b>	B-1,2,3,6 C-4,5	
<b>CUST</b>	AOE/15/SEAPL 888-226-7277 Daylight hrs only; exc hols	
<b>FLT PLN</b>	<p><b>FIG</b> Kamloops 866-WXBRIEF (Toll free within Canada) or 866-541-4101 (Toll free within Canada &amp; USA)</p> <p><b>ACC</b> IFR 604-586-4590/4591or 800-668-1333; IFR tng flts PPR ctc 604-586-4592 (collect calls accepted)</p>	
<b>SERVICES</b>	Fuel & beaching 604-273-8900 or 129.30 daylight hrs. 100LL, JA 3,4,5	
<b>A/D DATA</b>	Fraser River 066°-246°. Middle Arm 099°-279°. Tidal range 14', shallow water close to shores. Docks, ramp. Open water all year.	
<b>COMM</b>	<p><b>RCO</b> Pacific rdo 123.15 (FISE)</p> <p><b>ATIS</b> 124.6 restrictions are bcst on ATIS</p> <p><b>CLNC DEL</b> 121.4 All dep acft ctc clnc del</p> <p><b>TWR</b> 118.7 (South) 119.55 (North) VFR 124.02 125.65 226.5 236.6 (E) (emerg 604-775-9531)</p> <p><b>TML</b> 125.2</p>	
<b>NAV</b>	<b>VOR/DME</b> YVR 115.9 Ch 106 N49 04 38 W123 08 57 (37')	

# CANADA WATER AERODROME SUPPLEMENT

Effective 0901Z 19 March 2026 to 0901Z 18 February 2027

B278 AERODROME/FACILITY DIRECTORY

## VANCOUVER INTL BC (Cont'd)

CAM9

<b>PRO</b>	<p><b>AIRSPACE:</b> See VTA chart for VFR rtes &amp; pro. Procedures for crossing the southern Strait of Georgia within Tml Class C airspace refer to VTPC. Transponder mode C rqr'd in class C airspace and CZ. CARS Part VII operators must ensure routes flown at night meet minimum altitude requirements for commercial operations.</p> <p><b>ARR/DEP:</b> See Vancouver Intl CAM9 VTPC. Downwind flt alt not below 500' ASL over populated area to the S. Dep rstd til 0630 hr lcl O/T PPR from YVR Ops 604-207-7022.</p> <p><b>NOISE ABATEMENT:</b> Consistent with safe acft ops, the following are recommended operational proc: 1. Tkof Westbound and ldg Eastbound are preferred when wind and water conds permit. 2. Use low RPM reduced noise tkof when able. 3. Avoid dep rte that fly over the City of Richmond, whenever possible. 4. Avoid using "reverse thrust" after ldg to slow the acft. 5. Maintain 500 ASL when flying the Westminster Hwy downwind rte.</p> <p><b>ATS REQUIREMENTS:</b> - All VFR acft arriving, departing or transiting the Vancouver or Victoria Tower Class C or D airspace require a transponder code. - All acft departing Vancouver or Victoria Intl (including Water Aerodrome) call Kamloops FIC at 866-992-7433 (866-WXBRIEF) or 866-541-4101 for code assignment at least 30 min prior to flight or file a VFR Flight Plan/Flight Itinerary. - All acft arriving Vancouver, Victoria Intl (including Water Aerodrome) or transiting Vancouver or Victoria Control Zones obtain a code from one of the following ATS units: Vancouver Harbour, Nanaimo, Victoria Harbour, Boundary Bay, Langley, Abbotsford or Pitt Meadows, Pacific Radio 123.15, or call Kamloops FIC at 866-992-7433 (866-WXBRIEF) or 866-541-4101.</p>
<b>CAUTION</b>	Low lvl overflights of heli arr/dep adj land A/D. Rough water associated with strong E or W winds (1-3' swells). Debris in river. Twr cranes S side of Fraser River adj Olympic Oval.

## VANDERHOOF WATER BC

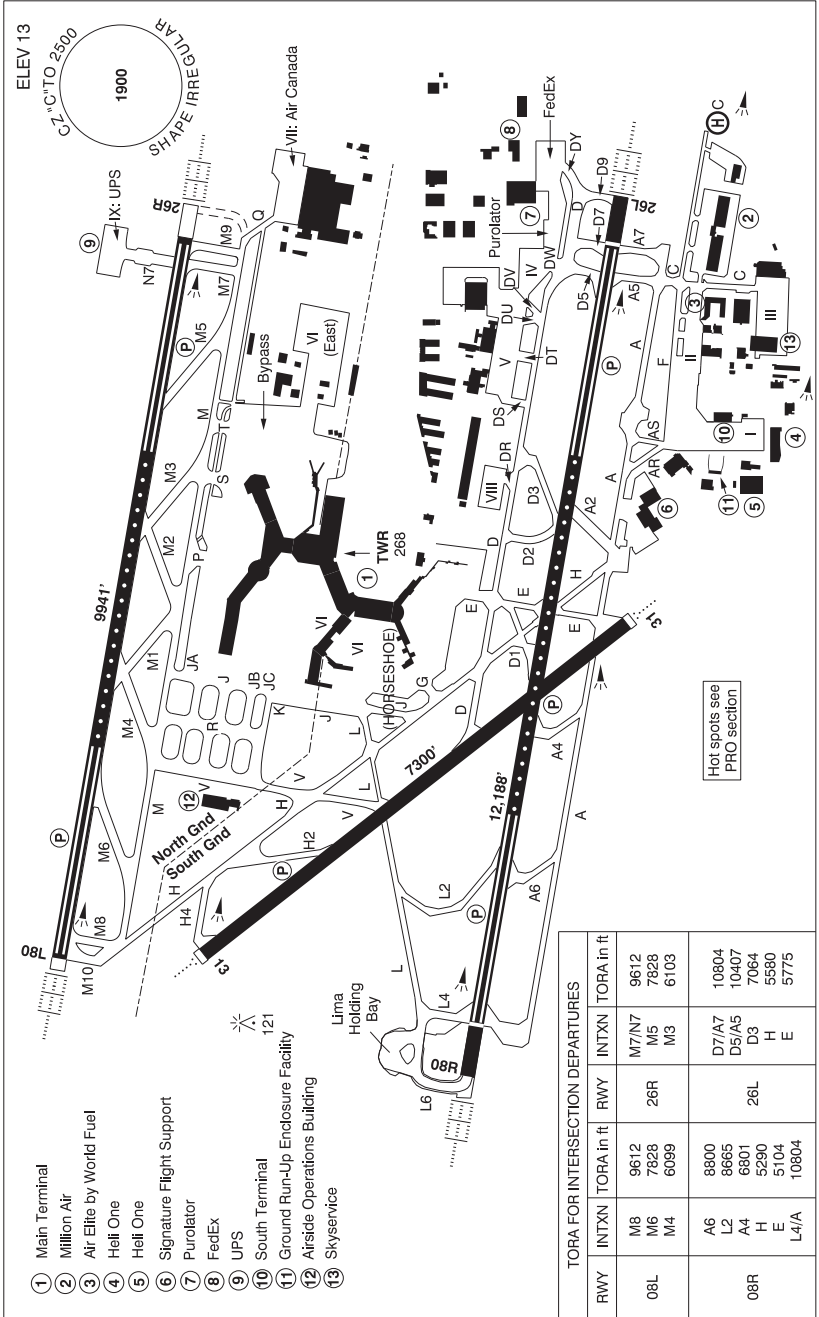
CVH3

<b>REF</b>	N54 01 13 W123 59 53 Adj NE 17°E° (2019) UTC-8(7) Elev 2050' aprx A5014	
<b>OPR</b>	Vanderhoof Flying Club 250-567-4805/8724 or 250-614-3569 Reg	
<b>PF</b>	C-1,2,3,4,5 D-6	
<b>FLT PLN</b>	<b>FIC</b> Kamloops 866-WXBRIEF (Toll free within Canada) or 866-541-4101 (Toll free within Canada & USA)	
<b>SERVICES</b>	<b>FUEL</b> 100LL (at land A/D), MG-1, MG-4 not avbl on site. <b>PVT ADV</b> Guardian Aerospace 250-567-2655 15-24Z± O/T 250-570-2670/2671 PN for float planes.	
<b>A/D DATA</b>	Open water May 1 to Oct 30. Mud & gravel bottom. <b>DOCKS</b> 3 docks on private land. Dock space not assured.	



VANCOUVER INTL BC

CYVR



- ① Main Terminal
- ② Millson Air
- ③ Air Elite by World Fuel
- ④ Heli One
- ⑤ Signature Flight Support
- ⑥ Purolator
- ⑦ UPS
- ⑧ South Terminal
- ⑩ Ground Run-Up Enclosure Facility
- ⑪ Airside Operations Building
- ⑫ Skyservice

TORA FOR INTERSECTION DEPARTURES					
RWY	INTXN	TORA in ft	RWY	INTXN	TORA in ft
08L	M8	9612	M7/N7	9612	
	M6	7828	M5	7828	
	M4	6099	M3	6103	
08R	A6	8800	D7/A7	10804	
	L2	8665	D5/A5	10407	
	A4	6801	D3	7064	
	H	5290	H	5580	
	E	5104	E	5775	
L4/A	10804				

## BRITISH COLUMBIA

## AERODROME / FACILITY DIRECTORY

## VANCOUVER INTL BC (Cont'd)

CYVR

<b>REF</b>	N49 11 41 W123 10 57 Adj SW 17°E (2015) UTC-8(7) Elev 13' VTA A5004 LO2 HI3 T1 CAP OC
<b>OPR</b>	Vancouver International Airport Authority 604-207-7022 H24 Cert Ldg fees
<b>PF</b>	Main tml bldg A-1,2,3,4,5,6; South side tml bldg A-1,2,3,6 B-5
<b>CUST</b>	AOE 888-226-7277
<b>FLT PLN</b>	
<b>FIG</b>	Kamloops 866-WXBRIEF (Toll free within Canada) or 866-541-4101 (Toll free within Canada & USA)
<b>ACC</b>	IFR 604-586-4590/4591 or 800-668-1333; IFR tng flts PPR ctc 604-586-4592 (collect calls accepted)
<b>WX</b>	METAR H24. TAF H24, issue times: 00, 03, 06, 09, 12, 15, 18, 21Z. WxCam
<b>DUAT</b>	Esso Avitat, Landmark (Shell Aerocentre)
<b>SERVICES</b>	
<b>FUEL</b>	100LL, JA (FSII avbl), JA-1 (FSII avbl), HPR
<b>S</b>	1,2,3
<b>ARFF</b>	DESIGNATED CAT 10
<b>SUP FL</b>	LHOX D & A-ice
<b>JASU</b>	CE16, Air Start
<b>PVT ADV</b>	Air Elite by World Fuel 122.85 604-270-2222; Million Air 130.875 604-273-6688; Signature Flight Support 123.325 604-279-9922; Seair Seaplanes 129.30 1-800-447-3247 604-273-8900 at adj water A/D.
<b>MIL CON</b>	Sky Service 523-720-4882
<b>RWY DATA</b>	Rwy 08R(083°)/26L(263°) 12188x200 ASPH/CONC Thld 08R displ 696'. Thld 26L displ 689'. Rwy 08L(083°)/26R(263°) 9941x200 ASPH/CONC Rwy 08L first 2027' down 0.3% Rwy 13(125°)/31(305°) 7300x200 ASPH/CONC RESA: 08R/26L 984'; 08L 984'; 26R 492'; 13/31 492'
<b>RWY CERT</b>	Rwy 08R RVR 600/Rwy 26L RVR 600 AGN VI Rwy 08L RVR 600/Rwy 26R RVR 600 AGN VI Rwy 13/31 AGN V
<b>TWY CERT</b>	Twy A AGN IV East of Twy E & AGN V West of Rwy 13/31 & btwn Twy E and Rwy 13/31. Twy AS AGN IIIB Twy: A2, D2 AGN IIIA Twy: A4, A6, D1, D3, DU, DV, E, H4, JB, JC, L2, M1, M2, M3, M4, M8, N7, P, Q, T AGN V Twy: A5, A7, AR, DR, DS, DW, DY, G, H2, S AGN IV Twy C AGN IIIB South of Twy F & AGN IV North of Twy F. Twy F AGN IIIA East of Twy C & AGN IV West of Twy C. Twy H AGN IV South of Rwy 08R/26L Twy J AGN V South of parking position W2 Twy K AGN V East of Twy R Twy L AGN V East of Rwy 13/31
<b>TWY</b>	<b>Rwy 08L Arrivals</b> Use of reverse thrust is to be avoided or reduced when conditions permit. M1, M3, M5 (rapid exit): Design speed in wet conditions is 50 kt (93 km/h). Reverse turns NOT AUTHORIZED without clearance. <b>Rwy 08R Arrivals</b> Acraft exiting onto D1, turn north on E, do not stop in Rwy area (See HOT SPOT 4). D1, D3 (rapid exit): Design speed in wet conditions is 50 kt (93 km/h). Reverse turns NOT AUTHORIZED without clearance.

## VANCOUVER INTL BC (Cont'd)

CYVR

RWY DATA  
(cont'd)TWY  
(cont'd)**Rwy 13 Departures**

Not avbl for acft with wingspan greater than 65.0m/213.3' (A380/B747-8/AN124). Not auth for A340-600, A350-900/-1000, B777-300/-300ER, B787-10.

**Rwy 26R Arrivals**

Use of reverse thrust is to be avoided or reduced when conditions permit. M2, M4, M6 (rapid exit): Design speed in wet conditions is 50 kt (93 km/h). Reverse turns NOT AUTHORIZED without clearance.

**Rwy 26L Arrivals**

Turns onto Rwy 31 NOT AUTHORIZED without clearance. Acft exiting onto Rwy 13/31: RIGHT turns onto D avbl to acft with wingspan 52.0m/170.6' (A310/B767) & smaller only. Acft exiting onto H, hold short of D, do not stop in Rwy area (See HOT SPOT 4). Reverse turns NOT AUTHORIZED without clearance.

**Rwy 31 Arrivals**

Not avbl for acft with wingspan greater than 65.0m/213.3' (A380/B747-8/AN124). Not auth for A340-600, A350-900/-1000, B777-300/-300ER, B787-10.

Uncontrolled twys: C (south of F), F, J (btwn L & K), Q, DR, DS, DT, DU, DV & DW. Uncontrolled vehicle crossings: DS, DT, DU, DV, DY, F, H (north of H4), J, JA, JB, JC, K, N7, P, Q, R, S, T, V.

All Twys: Discretionary oversteer is required at every intersection for all acft types.

Twy A (W of Rwy 13/31): Not avbl for A340-600, A350-900/-1000, B777-300/-300ER, B787-10 only, due acft wheelbase.

Twy A Compass Rose: Not avbl SS-SR. Avbl to acft with wingspan 24.1m/79' (SF34) & smaller only.

Twy A (westbound): RIGHT turns onto E avbl to acft with wingspan 24.1m/79.0' & smaller only.

Twy AS: Avbl to acft with wingspan 36.0m/118.1' (A321/B737) & smaller only.

Twy A2: Avbl to acft with MTOW 50,000lbs (DHC-8 300/Lear 60) & less.

Twy A4, A6, D1, DU, H4, L2, M1, M2, M3: Not avbl for A340-600, A350-900/-1000, B777-300/-300ER, B787-10 only, due acft wheelbase.

Twy C (south of F): Avbl to acft with wingspan 36.0m/118.1' (A321/B737) & smaller only. Follow me required below RVR 1200, ctc Aprt Ops.

Twy D: CAUTION: Acft cannot safely taxi via Twy D east or west past acft at the Twy D5 or Twy D7 runway holding positions. Acft with wingspan greater than 36.0m/118.1' cannot safely pass behind an acft holding on Twy D east of Twy D7.

Twy D (eastbound): LEFT turns onto H avbl to acft with wingspan 36.0m/118.1' (A321/B737) & smaller only.

Twy D (westbound): No left turns onto H. No left turns onto D7.

Twy D1, D3, M1-M6 (rapid exit): Design speed in wet conditions is 50 kt (93 km/h).

Twy D2: Avbl to acft with MTOW 100,000lbs (CRJ-900) & less.

Twy D7: No RIGHT turns onto D.

Twy E: Entry & exit at Apron VI avbl to acft with wingspan 60.4m/198.2' (A330-300/B787-9) & smaller only.

Twy E (N of Rwy 08R/26L): Not avbl for A340-600, A350-900/-1000, B777-300/-300ER, B787-10 only, due acft wheelbase.

Twy E (southbound): LEFT turns onto A avbl to acft with wingspan 24.1m/79.0' & smaller only.

Twy F (east of C): Avbl to acft with wingspan 24.9m/81.7' (CRJ-900) & smaller only. Follow me required below RVR 1200, ctc Aprt Ops.

Twy H (southbound): No RIGHT turns onto A, L, or H4. RIGHT turns onto D avbl to acft with wingspan 36.0m/118.1' (A321/B737) & smaller only. No LEFT turns onto D1.

Twy H (northbound): No LEFT turns onto V or D1. No RIGHT turns onto D. RIGHT turns onto L avbl to acft with wingspan 36.0m/118.1' (A321/B737) & smaller only.

## BRITISH COLUMBIA

## AERODROME / FACILITY DIRECTORY

## VANCOUVER INTL BC (Cont'd)

CYVR

RWY DATA  
(cont'd)

Twy J (southbound): A340, B747 not auth south of Twy K due jet blast (avbl for acft under tow). All acft use min thrust when turning due jet blast.

Twy J (northbound): LEFT turns onto K avbl to acft with wingspan 41.1m/134.8' (B757) & smaller only, due jet blast (avbl for acft under tow).

Twy L (eastbound): Entry & exit at Apron VI avbl to acft with wingspan 36.0m/118.1' (A321/B737) & smaller only. No LEFT turns onto H.

Twy L (westbound): No RIGHT turns onto V. LEFT turns onto H avbl to acft with wingspan 36.0m/118.1' (A321/B737) & smaller only.

Twy L4 (northbound): Only acft with a max wingspan of 52.0m/170.6' (e.g. A310/B767) can hold short of L while exiting/crossing Rwy 08R/26L due to acft tail height.

Twy M: When acft with wingspan greater than 65.0m/213.3' (A380/B747-8) is on the taxilane btwn Gate 66 & Gate 72, Twy M btwn Twy J and Twy T is avbl to acft with wingspan 52.0m/170.6' (A310/B767) & smaller only.

Twy M4: LEFT and RIGHT turns onto M not avbl for A340-600, A350-900/1000, B777-300/-300ER, B787-10 only, due acft wheelbase.

M11: Clsd.

Twy P: RIGHT turns onto M avbl to acft with wingspan 52.0m/170.6' (A310/B767) & smaller only, due jet blast (avbl for acft under tow).

Twy Q: Follow me required below RVR 1200, ctc Aprt Ops.

Twy V (northbound): No RIGHT turns onto H.

Twy V (southbound): No LEFT turns onto L.

## APRON

Apron I, II, III, IV, V, VI, VIII: PPR Airport Ops is required. PPR for all engine airtarts or crossbleed starts. Advise ATC if ground crew not present at gate. Acft pushing back from Gates 40 thru 43 ctc 127.15 (North).

Apron I, II, III: Hover taxi not auth, heli must ground taxi or be towed.

Apron I: Avbl to acft with wingspan 28.5m/93.5' (DHC-8 Q400) & smaller only.

Apron II, VIII: Avbl to acft with wingspan 52.0m/170.6' (A310/B767) & smaller only.

Apron III: Avbl to acft with wingspan 36.0m/118.1' (A321/B737) & smaller only. Jets tow in & out.

Apron IV: Avbl to acft with wingspan 52.0m/170.6' (A310/B767) & smaller only. Taxilane east of DW avbl to acft with wingspan 32.1m/105.3' (CV-580) & smaller only. Btwn DW & FedEx not auth for taxi below RVR 1200, follow me required, ctc Aprt Ops.

Apron VI (Horseshoe): Taxilanes avbl to acft with wingspan 36.0m/118.1' (A321/B737) & smaller only.

Apron VI (South): Taxilane btwn G & parking position S1 avbl to acft with wingspan 52.0m/170.6' (A310/B767) & smaller only.

Apron VI (South): Taxilane east of parking position S1 avbl to acft with wingspan 60.4m/198.2' (A330-300/B787-9) & smaller only.

Apron VI (North): Travelling eastbound, turns onto P avbl to acft with wingspan 52.0m/170.6' (A310/B767) & smaller only due jet blast (avbl for acft under tow).

Apron VI (North): When acft with wingspan greater than 65.0m/213.3' (A380/B747-8) is on M btwn J & T, the taxilane between Gate 66 & T is avbl to acft with wingspan 52.0m/170.6' (A310/B767) & smaller only.

Apron VI (East): Bypass taxilane (amber inset lighting) avbl to acft with wingspan 36.0m/118.1' (A321/B737) & smaller only.

Apron VI (East): Simultaneous use of dual taxilanes avbl to acft with wingspan 36.0m/118.1' (A321/B737) & smaller only.

Apron VI (East): Pushbacks from parking positions E1-E3 to west taxilane. Pushbacks from parking positions E10-E19 to south taxilane.

Apron FedEx, Purolator: Btwn Purolator & FedEx Aprons: Avbl to acft with wingspan 17.4m/57.1' (Metro III) & smaller only.

RCR Opr CRFI, PCN

## RCR

## HELI DATA

Pad C: FATO 108' dia CONC/ASPH TLOF 33' x 33' CONC Safety Area 148' dia Max heli overall length 73'

## LIGHTING

08R-AL(TE HI A TDZL) P3, 26L-AL(TE HI A TDZL) P3,  
08L-AL(TE HI A TDZL) P3, 26R-AL(TE HI A TDZL) P3,  
13-AO(TE ME) P3, 31-AO(TE ME) P3  
Pad C: RY(HI)

## BRITISH COLUMBIA

## AERODROME / FACILITY DIRECTORY

## VANCOUVER INTL BC (Cont'd)

CYVR

## COMM

**RCO** Pacific rdo 123.15 (FISE)  
**ATIS** 124.6 restrictions are bcst on ATIS  
**CLNC DEL** 121.4 all dep acft ctc clnc del  
**GND** 121.7 (South) 127.15 (North) 275.8  
**TWR** 118.7 (South) 119.55 (North) VFR 124.02 125.65 226.5 236.6 (E)  
 (emerg 604-775-9531)  
**TML** 125.2  
**ARR** 128.6/128.17 (Outer) 133.1 (Inner) 134.225 (Inner) 352.7  
**DEP** 126.125 (North) 132.3 (South) 363.8

## NAV

**VOR/DME** YVR 115.9 Ch 106 N49 04 38 W123 08 57 (37')  
**DME** IVR 109.5 Ch 32 N49 11 18 W123 12 03 (18')  
 IFZ 110.7 Ch 44 N49 11 02 W123 09 55  
 IMK 111.1 Ch 48 N49 11 48 W123 11 59 (21')  
 IRD 111.95 Ch 56(Y) N49 12 07 W123 09 51 (24')  
 ITL 110.55 Ch 42(Y) N49 12 20 W123 11 47 (23')  
**ILS** IFZ 110.7 (Rwy 26L) RVR  
 IVR 109.5 (Rwy 08R) RVR  
 IMK 111.1 (Rwy 13)  
 ITL 110.55 (Rwy 08L) RVR  
 IRD 111.95 (Rwy 26R) RVR

## VANCOUVER INTL BC (Cont'd)

CYVR

## PRO

Pilots should refer to Canadian Airport Charts (CAC) to obtain details on established hot spots, prior to operating on manoeuvring areas. CAC are available for free on the NAV CANADA website.

**AIRSPACE:** See VTA chart for VFR rtes & pro. Procedures for crossing the southern Strait of Georgia within Tml Class C airspace refer to VTPC. Transponder mode C req'd in class C airspace and CZ. CARS Part VII operators must ensure routes flown at night meet minimum altitude requirements for commercial operations.

**MULTILATERATION:** All fixed wing aircraft and rotorcraft must keep their transponder on at all times when manoeuvring on the airport (turn on prior to contacting Ground Control for pushback and on arrival, remain on until final engine shutdown).

Pilots that do not have transponder code issued by ATC squawk 1000 when taxiing.

**AIRPORT:** Peak tfc 14-02Z†. Noise abatement see Canada Air Pilot & VTA chart.

Run-ups, crossbleed starts, airstarts & jet engine starts on gate (Aprons I, II, III, IV, V, VI, VIII); PPR Airport Ops. No ab initio tng. For water A/D info refer to CWAS.

**APU SHUTDOWN PROCEDURE:** Acft Auxiliary Power Unit (APU) use shall be limited to 15 min or less in total between on-block time and departure of acft from stands supplied with gnd power unit (GPU) and/or preconditioned air, for environmental reasons. Acft on stands not equipped with svcbl GPU and/or preconditioned air need not comply with above limitation.

**DE-ICING GENERAL:****Overview**

West Pads is the Central De-Icing Facility (CDF) and handles de-icing for all aircraft excluding South Terminal aircraft capable of utilizing the Ground Run-Up Enclosure (GRE) which is the South De-Icing Facility.

**West Pads (CDF)**

1. Thirty (30) min prior to pushback or taxi, advise "VANCOUVER DE-ICE" on 129.95 and advise, "ACFT DE-ICING REQUIRED".
2. When requesting pushback, ctc Ground Control on assigned frequency and advise, "ACFT DE-ICING REQUIRED". Ground Control will issue taxi instructions to the West Pads (CDF).
3. Aircraft queuing into CDF is on W12 via Twy V or on Twy R via Twy M/Twy K. When instructed by Ground Control, ctc "PAD CONTROL" 131.975.
4. Follow "PAD CONTROL" instructions to de-icing bay, stop with nose gear positioned on the yellow STOP BAR with brakes set. Confirm brakes set to "PAD CONTROL".
5. Once aircraft is in final stop position, brakes are set and aircraft configured for de-icing, ctc "ICEMAN" on 130.700 and advise, "BRAKES SET, ACFT CONFIGURED, READY TO DE-ICE". At this time, pass along any specific fluid and/or treatment requirements.
6. After de-icing is completed and the aircraft has been inspected, "ICEMAN" will provide post-treatment information.
7. When advised by "ICEMAN", ctc "PAD CONTROL" on 131.975 for exit instructions.
8. When advised by "PAD CONTROL", ctc Ground Control on assigned frequency for taxi instructions.

UNDER NO CIRCUMSTANCES MAY THE AIRCRAFT BE MOVED BEFORE PAD CONTROL ADVISES THAT THE AIRCRAFT IS CLEARED TO TAXI OUT OF THE BAY.

## VANCOUVER INTL BC (Cont'd)

CYVR

## PRO (Cont'd)

**West Pads (CDF) De-icing Bay Capacity:**

- W1 & W3:** Maximum wingspan 36.0m (118.1'), AMBER inset lighting;  
**W2:** Maximum wingspan 65.0m (213.3'), GREEN inset lighting;  
**W4:** Maximum wingspan 36.0m (118.1'), AMBER inset lighting;  
**W5:** Maximum wingspan 65.0m (213.3'), GREEN inset lighting;  
**W6:** Maximum wingspan 24.9m (81.7'), AMBER inset lighting;  
**W7 & W9:** Maximum wingspan 36.0m (118.1'), AMBER inset lighting;  
**W8:** Maximum wingspan 65.0m (213.3'), GREEN inset lighting;  
**W11 & W13:** Maximum wingspan 36.0m (118.1'), AMBER inset lighting;  
**W12:** Maximum wingspan 79.9m (262.1'), GREEN inset lighting;  
**W15:** Maximum wingspan 65.0m (213.3'), GREEN inset lighting;  
**W17 & W19:** Maximum wingspan 36.0m (118.1'), AMBER inset lighting;  
**W18:** Maximum wingspan 79.9m (262.1'), GREEN inset lighting.

**Ground Run-up Enclosure (GRE)**

Operators must receive an orientation for the GRE facility prior to use.

Crews may contact the "VANCOUVER DE-ICE" or call Aeromag Operations at (604) 278-1901 to schedule de-icing up to 120 minutes prior to departure. Information required: aircraft type, flight number/call sign, and the type(s) of fluids required. Parking position 2A, on Apron I, is the only staging position for the facility. Aircraft waiting to use the GRE must remain on their aprons until 2A becomes available.

"ICEMAN" will advise if engines should be running during de-icing.

**Entry Procedure**

1. Before contacting Ground Control for taxi, contact "ICEMAN" 130.925 for position in de-icing queue.
2. When "ICEMAN" approves access to the GRE, contact Ground Control on assigned frequency for taxi.
3. Proceed into the GRE as instructed by "ICEMAN". CAUTION: DO NOT enter GRE until instructed by "ICEMAN".
4. Advise "ICEMAN" 130.925 when stopped with brakes set in the GRE.

**De-icing Procedure**

5. Contact "ICEMAN" 130.925 to confirm brakes set, aircraft configured, engines idle, and provide fluid requirements.
6. After de-icing is complete and the aircraft has been inspected, ICEMAN will provide posttreatment information.

**Exit Procedure**

7. When ready to taxi, contact "ICEMAN" 130.925 for instructions.
8. When advised by "ICEMAN", ctc Ground Control on assigned frequency for taxi instructions.

**GRE De-icing Capacity:**

The largest aircraft that can access the GRE via taxilane on Apron I are:

**Propellers (power in/out):** Maximum wingspan: 28.5m (93.5') (DHC-8 Q400 and smaller)

**Jets (power in/out):** Maximum wingspan: 21.6m (70.9') (Dassault Falcon 900 with winglets and smaller)

**Jets (tow in, power out)\*:** Maximum wingspan: 28.5m (93.5') (Gulfstream V)

\*Note: Tow in may be unavailable when snow cannot be fully cleared from the GRE.

## VANCOUVER INTL BC (Cont'd)

CYVR

## PRO (Cont'd)

**ATC:****IFR Clearance Acknowledgement**

IFR clearance read back with Vancouver Tower clearance delivery shall include the acft call sign, assigned SID name and transponder code.

**Ground Control Procedure**

YVR GND is divided into two sectors with separate freq. Ctc the next GND sector crossing the N/S boundary unless otherwise instructed by ATC.

Apron VI Users: See Standard Taxi Arrival/Departure Procedures.

**PARKING:** W1-19 power in and out; E1-E19 power in & tow out.

**ARRIVALS:****Flow Times - IFR**

Acft planning IFR flt (including round-robin tng & test flt) into CYVR should ctc ATS prior to dep to determine flow status. If unable to determine thru ATS, ctc National Traffic Management Unit (FLOW CTL) 877-987-2055.

**Slots**

In support of CYVR available arrival slots, IFR acft dep from KBLI or from within the Vancouver FIR exc CYQQ, CYPW, CAT4, CBS8 or CSR6 destined for CYVR are required to ctc TWR, FSS or FIC 30-90 min prior to dep for an approved dep time.

IFR acft dep CYQQ, CYPW, CAT4, CBS8 and CSR6 destined for CYVR are required to ctc CYQQ Terminal 250-339-8115 30-45 min prior to dep for an approved dep time.

IFR acft dep CYYJ, ctc CLNC DEL on freq 126.4 30-90 min prior to dep for an approved dep time.

MEDEVAC IFR acft dep from all locations destined for CYVR shall contact the appropriate agency as soon as possible and advise of their proposed dep time.

**FLOAT:**

Amphibious Aircraft: Contact 604-303-3536 on arr for float plane gate access.

**ATS REQUIREMENTS:**

- All VFR acft arriving, departing or transiting the Vancouver or Victoria Tower Class C or D airspace require a transponder code.

- All acft departing Vancouver or Victoria Intl (including Water Aerodrome) call Kamloops FIC at 866-541-4101 or PAC RDO 123.15 for code assignment at least 30 min prior to flight or file a VFR Flight Plan/Flight Itinerary.

- All acft arriving Vancouver, Victoria Intl (including Water Aerodrome) or transiting Vancouver or Victoria Control Zones obtain a code from one of the following ATS units: Vancouver Harbour, Nanaimo, Victoria Harbour, Boundary Bay, Langley, Abbotsford or Pitt Meadows or call Kamloops FIC at 866-541-4101 or PAC RDO 123.15.

- All acft arriving Victoria Intl from a non NAV CANADA site call Kamloops FIC at 866-541-4101 or PAC RDO 123.15 for code assignment at least 30 minutes prior to flight or file a VFR Flight Plan/ Flight Itinerary.

**DEPARTURES:**

Coded Taxi Routes

**READ BACK: "CODE ROUTE (code) & ASSIGNED RWY"**

Monitor TWR freq approaching the hold line of the assigned rwy, unless otherwise instructed by ATC.

Rwy 08R/26L - TWR 118.7

Rwy 08L/26R - TWR 119.55

## VANCOUVER INTL BC (Cont'd)

CYVR

## PRO (Cont'd)

## CODETAXI ROUTE

EchoRwy 08R-E, D, H, hold short L.

Rwy 08L-E, D, H, hold short V, ctc gnd 127.15 (expect taxi via H, M, M10).

Rwy 26R-E, D, H, hold short V, ctc gnd 127.15 (expect taxi via V, M, M9).

Rwy 26L-E, D.

GolfRwy 08R-G, H, hold short L.

Rwy 08L-G, H, hold short V, ctc gnd 127.15 (expect taxi via H, M, M10).

Rwy 26R-G, H, hold short V, ctc gnd 127.15 (expect taxi via V, M, M9).

Rwy 26L-G, H, D.

Juliet-Alpha\*Rwy 08R-JA, J, K, V, hold short H, ctc gnd 121.7 (expect taxi via V, L, L6).

Rwy 08L-JA, J, M, M10

Rwy 26R-JA, J, M, M9

Rwy 26L-JA, J, K, V, hold short H, ctc gnd 121.7 (expect taxi via H, D).

Juliet-Bravo\*Rwy 08R-JB, J, K, V, hold short H, ctc gnd 121.7 (expect taxi via V, L, L6).

Rwy 08L-JB, J, M, M10

Rwy 26R-JB, J, M, M9

Rwy 26L-JB, J, K, V, hold short H, ctc gnd 121.7 (expect taxi via H, D).

Juliet-Charlie\*Rwy 08R-JC, K, V, hold short H, ctc gnd 121.7 (expect taxi via V, L, L6).

Rwy 08L-JC, J, M, M10

Rwy 26R-JC, J, M, M9

Rwy 26L-JC, K, V, hold short H, ctc gnd 121.7 (expect taxi via H, D).

LimaRwy 08L-L, H, hold short V, ctc gnd 127.15 (expect taxi via H, M, M10).

Rwy 26R-L, H, hold short V, ctc gnd 127.15 (expect taxi via V, M, M9).

Rwy 26L-L, J, H, D

Papa\*Rwy 08R-P, M, V, hold short H, ctc gnd 121.7 (expect taxi via V, L, L6).

Rwy 08L-P, M, M10

Rwy 26R-P, M, M9 (avbl to acft with wingspan 52.0m (170.6') &amp; smaller only).

Rwy 26L-P, M, V, hold short H, ctc gnd 121.7 (expect taxi via H, D).

SierraRwy 08R-S, M, V, hold short H, ctc gnd 121.7 (expect taxi via V, L, L6).

Rwy 08L-S, M, M10

Rwy 26R-S, M, M9

Rwy 26L-S, M, V, hold short H, ctc gnd 121.7 (expect taxi via H, D).

Tango\*Rwy 08R-T, M, V, hold short H, ctc gnd 121.7 (expect taxi via V, L, L6).

Rwy 08L-T, M, M10

Rwy 26R-T, M, M9

Rwy 26L-T, M, V, hold short H, ctc gnd 121.7 (expect taxi via H, D).

\*A340-600, A350-900/-1000, B777-300/-300ER, B787-10 Taxi Routes

## VANCOUVER INTL BC (Cont'd)

CYVR

**PRO (Cont'd)** Heli with max heli overall length greater than 73': Tkof/lgd from rwy thld only.  
**HELI** Heli arr/dep permitted from Pad C or destination FBO (PPR).

**NOISE NOISE ABATEMENT PROCEDURES:**

These procedures apply to JET ACFT unless noted otherwise.

**DEP PROCEDURES****JET ACFT**

1. NADP 1 or 2 (Noise Abatement Dep Proc) required for all runways. Advise ATC CLNC DEL if using NADP 1. Follow SID to 3000' BPOC.
2. Rwy 08R btn 2300- 0600 local; acft on westerly routes follow assigned SID to 2000' BPOC.
3. ICAO Annex 16 Chapter 2 or FAA part 36 Stage 2 cert acft; departures on runways 08L and 26R not permitted.

**ARR PROCEDURES****IFR APPROACHES & PUBLISHED VISUAL APPROACHES**

Use low power/drag profiles consistent with safe oprg procedures, conforming to published visual approaches and as directed by ATC.

**VFR APPROACHES**

Conform to published VTA routes and as directed by ATC.

**REVERSE THRUST - LDG**

All runways: Use of reverse thrust is to be avoided or reduced when conditions permit.

**NIGHT RESTRICTIONS****LOCAL TIME PROCEDURE**

1. **0001- 0600: Dep** of ICAO Annex 16 Chapter 2 or FAA FAR Part 36 Stage 2 cert JET ACFT 34,000 kg and over not permitted.
2. **0001- 0600: Dep** of JET AIRCRAFT rated over 34,000 kg (MTOW), regardless of actual take-off weight, require prior approval from YVRAA OPERATIONS.
3. **2200- 0700: Dep/Arr** of all acft on runways 08L & 26R not permitted\*
4. **2200- 0700: Local Tng Flights** not permitted.

\* See CONTACT & APPROVALS Section below.

ALL AIRCRAFT (Priority Flights Exempt)

**LOCAL TIME**

1. 0600-2300

One direction flow

2. 2300-0600

Two direction flow

**PREFERENTIAL RUNWAY USAGE**

Defer to westerly flow

Minimize departures on Rwy 13 and arrivals on Rwy 31

Westerly flow for departures and easterly flow for arrivals

Minimize departures on Rwy 13 and arrivals on Rwy 31

Subject to limiting factors including: physical condition of surfaces; irregular airfield operations; crosswind and tailwind conditions; and traffic volume. (MEDEVACS EXEMPT)

**ENGINE RUN-UP RESTRICTIONS**

Maint engine run-ups for all ACFT require prior approval from YVRAA OPS. Guidelines are contained in the Aprt Ops Directive, Acft Engine Run-ups.

**ENGINE START RESTRICTIONS**

PPR YVR OPS for all engine airstarts or crossbleed starts on Aprons I, II, III, IV, V, VI, VIII.

**ALT RESTRICTIONS**

1. Exclusive of the dep & arr procedures, no departing or arriving acft shall opr over the City at less than 5000' ASL (8000' btn 2300-0700 local time - except acft oprg on published RNAV STAR).
2. The City is defined as that area lying btn the S arm of the Fraser River and the N Shore Burrard Inlet and from Point Gray to the eastern bdry of the Vancouver Control Zone.

## BRITISH COLUMBIA

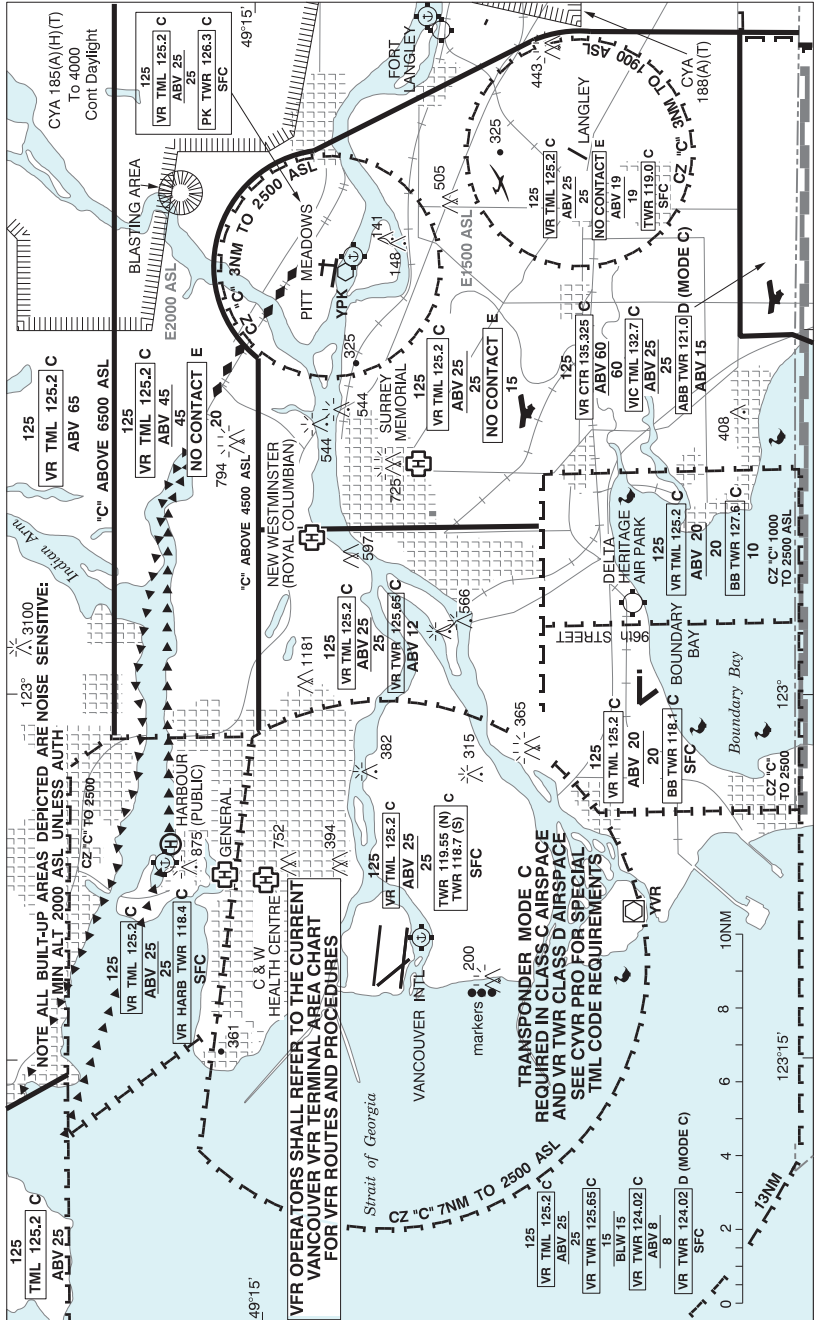
## AERODROME / FACILITY DIRECTORY

## VANCOUVER INTL BC (Cont'd)

CYVR

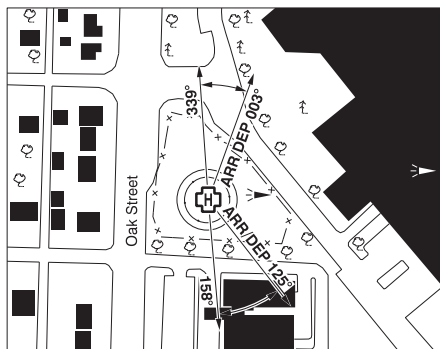
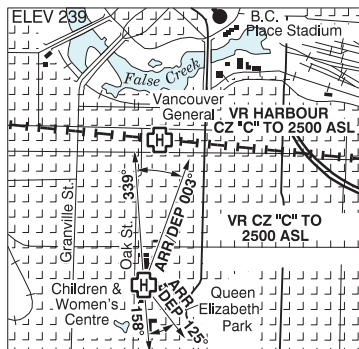
<b>PRO (Cont'd)</b> <b>NOISE</b> <b>(cont'd)</b>	<p><b>CONTACT &amp; APPROVALS</b> Night Restrictions #3: YVRAA OPS may permit exemptions for emergencies and airfield maint. For planning purposes, Rwy 08L/26R will be the operational runway whenever Rwy 08R/26L is unavailable due to emergencies or airfield maintenance. <b>Tel: 604-207-7022, Airport_Operations@yvr.ca</b></p> <p><b>IT IS THE PILOT'S RESPONSIBILITY TO ADHERE TO PUBLISHED NOISE ABATEMENT PROCEDURES.</b></p> <p><b>Airport Reservation Office (ARO)</b> Airport Reservation Office (ARO) pro for all General and Business Aviation acft operating IFR &amp; VFR flt. Operators must file a dep and arr reservation through the Online Coordination. System (OCS): <a href="https://www.online-coordination.com/">https://www.online-coordination.com/</a>. For more information contact ARO at 604-303-3193.</p>
<b>CAUTION</b>	<p>Oct-Apr Migratory birds in vic of aprt; resident Snow Goose population, Significant hazard at and BLW 400 AGL W of the thld of Rwy 08R and Rwy 08L out to 1.9NM. ALL JET ACFT: Light acft susceptible to jetblast when turning fr Twy F on to Twy C. Frequent VFR float acft activity on river S side of aprt.</p>

VANCOUVER VFR TERMINAL PROCEDURES CHART



**VANCOUVER (CHILDREN & WOMEN'S HEALTH CENTRE) BC (Helicopter)**

**CAK7**



<b>REF</b>	N49 14 38 W123 07 38 17°E (2014) UTC-8(7) Elev 239' VTA A5004
<b>OPR</b>	Provincial Health Services Authority 604-677-3672 Cert NVIS OPS AUTH PPR
<b>PF</b>	B-1,2,4 C-3,5,6
<b>FLT PLN</b>	
<b>FIC</b>	Kamloops 866-WXBRIEF (Toll free within Canada) or 866-541-4101 (Toll free within Canada & USA)
<b>HELI DATA</b>	FATO 86' dia GRASS TLOF 45' dia CONC Safety Area 115' dia Max heli overall length 57' (CAR 602.96)
<b>LIGHTING</b>	RW(ME) green LED PN ARCAL-122.8 type K PN
<b>COMM</b>	
<b>ATIS</b>	Vancouver 124.6
<b>TWR</b>	Vancouver 124.02
<b>A/G</b>	Hosp Security 158.76 FM 3 min PN
<b>PRO</b>	Arr/dep 125° to 158° (H1), day/night use (CAR 602.96). Arr/dep 339° to 003° (H1), day/night use (CAR 602.96). Noise sensitive area, use noise abatement profile for act type. Transponder mode C rqr'd in CZ & tml class "C" airspace.
<b>CAUTION</b>	Numerous unlit trees all quads. Numerous cranes within 800' of heli max 549' ASL.

