

---

# FLIGHT PLAN & SITE SURVEY

---

N 892-5434 MODEL AIR APPALACHES- MODELAIR  
APPALCHES

May 22, 2026



**IMPORTANT NOTICE**

Please ensure you have received all required authorizations prior to flight. This Site Survey was created using RPAS Wilco. The user accepts all responsibility for the accuracy of the information.

Terms & Conditions: [rpswilco.com/#tnc](https://rpswilco.com/#tnc)

# Mission Information

N 892-5434 MODEL AIR APPALACHES- MODELAIR APPALCHES

## FLIGHT DETAILS

Reference No:	<b>MAAC-892-5434</b>
Project Name:	<b>MODEL AIR APPALACHES</b>
Pilot Name:	<b>MAAC</b>
Pilot Certificate:	
Mission Type:	<b>VLOS</b>
Flight Start:	<b>May 22, 2026 02:55 PM</b>
Flight End:	<b>May 22, 2026 03:55 PM</b>

## LOCATION DETAILS

Flight Address:	<b>MODELAIR APPALCHES</b>
Latitude:	<b>46° 46' 14.90" N ( 46.771 )</b>
Longitude:	<b>70° 56' 0.80" W ( -70.934 )</b>
Altitude / Radius:	<b>400 ft / 926 m ( 0.5 nm )</b>
Classification:	<b>UNCONTROLLED</b>
FIR / Contact:	<b>CZUL / 514-633-3365</b>

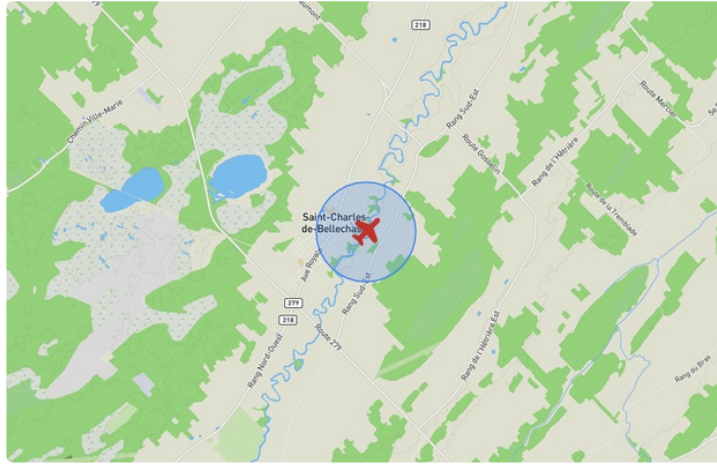
## REPORT CONTENTS

Site Survey • Obstacles (if available) • Nearby Aerodromes • Canadian Aviation Regulations • GFA • Aerodrome Supplements • METAR & TAF • NOTAMS • CFS





# Flight Map & MODEL Details

MISSION LOCATION SURVEY

## FLIGHT AREA MAP



## MISSION LOCATION DETAILS

ROLE	LATITUDE	LONGITUDE
 MODEL	46° 46' 14.90" N 46.771	70° 56' 0.80" W -70.934
 Pilot		
 Payload Op.		
 Observer		

# Airspace Classification

MISSION LOCATION SURVEY

## AIRSPACE MAP



## OVERLYING AIRSPACES

Class	Name	Floor	Ceiling
C	Québec, QC b) [TCA]	1500MSL	12500MSL
C	Québec, QC d) [TCA]	3500MSL	12500MSL
E	T660 Fixed RNAV Route	2200AGL	18000MSL
E	T677 Fixed RNAV Route	2200AGL	18000MSL
E	T781 Fixed RNAV Route	2200AGL	18000MSL
F	CYA616 (T) QUÉBEC, QC	SFC	4000MSL
E	Québec/Jean Lesage Intl, QC [TA]	2200AGL	18000MSL
E	3.5.2-5 [CAE]	6000AGL	18000MSL

## NEAREST AERODROMES & DISTANCE FROM OPERATION

PINTENDRE (CPT9 - AERODROME - Reg)	Lat: 46.758	Long: -71.109	13.458KM	7.267NM	W
ST-JEAN CHRYSOSTOME (CSG5 - AERODROME - Reg)	Lat: 46.685	Long: -71.152	19.152KM	10.341NM	SW
ST-LAMBERT-DE-LAUZON (CST7 - AERODROME - Reg)	Lat: 46.56	Long: -71.183	30.148KM	16.279NM	SW

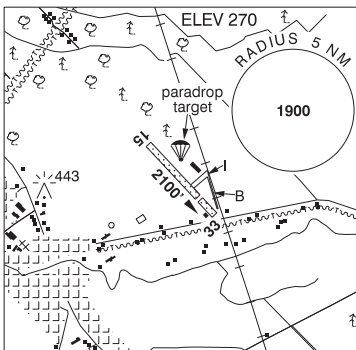
QUEBEC

AERODROME / FACILITY DIRECTORY

PINTENDRE QC

CPT9

<b>REF</b>	N46 45 27 W71 06 33 Adj E 16°W (2013) UTC-5(4) Elev 270' A5002
<b>OPR</b>	Jacques Bernier 418-833-2821 or 418-952-2821 Reg PPR
<b>PF</b>	C-1,2,3,4,5,6
<b>FLT PLN</b>	(bil)
<b>FIC</b>	Québec 866-GOMÉTÉO or 866-WXBRIEF (Toll free within Canada) or 866-541-4105 (Toll free within Canada & USA)



<b>SERVICES</b>	
<b>FUEL</b>	100LL, JA Ltd ctc OPR
<b>OIL</b>	Shell W 15 W 50
<b>S</b>	1,4,5,6

<b>RWY DATA</b>	Rwy 15(153°)/33(333°) 2100x30 GRVL Thld 33 displ 450'
<b>RCR</b>	Opr Ltd win maint

<b>COMM</b>	
<b>ATF</b>	tfc 123.2 5NM 1500 ASL excluding CYQB CZ and Québec TCA

<b>PRO</b>	<b>Preferential Rwy:</b> Rwy 15 preferred for tkof. Rwy 33 preferred for ldg. <b>Circuits:</b> Right hand circuits Rwy 33 (CAR 602.96). Circuits not above 1300 ASL. <b>Touch and go:</b> Touch and go not auth. <b>VFR Codes:</b> In order to minimize delays, ATC freq congestion and for better airspace management, as well as to improve safety, ctc the Montreal ACC at 877-YUL-CODE (877-985-2633), or the FIC at 1-866-GOMETEO or 1-866-WX BRIEF, to provide ATC with info pertaining to your flt to obtain your transponder code at least 30 min prior to a flight into Quebec Class C airspace.
------------	--

<b>CAUTION</b>	<b>Inst apch at CYQB:</b> Acft flying to Québec/Jean Lesage Intl aprt (CZ 4.8NM WNW of Pintendre A/D) on inst apch Rwy 29 can overfly Pintendre A/D below 3000 ASL. St-Jean-Chrysostome A/D 4.5NM WSW common freq. Possibility of deer on the rwy. Lgtd P-line short final Rwy 33. Two unlgtd P-line 0.5NM final Rwy 15. Paradrop (up to 12,500 ASL) SR-SS mid-Apr to mid-Oct.
----------------	--

## QUEBEC

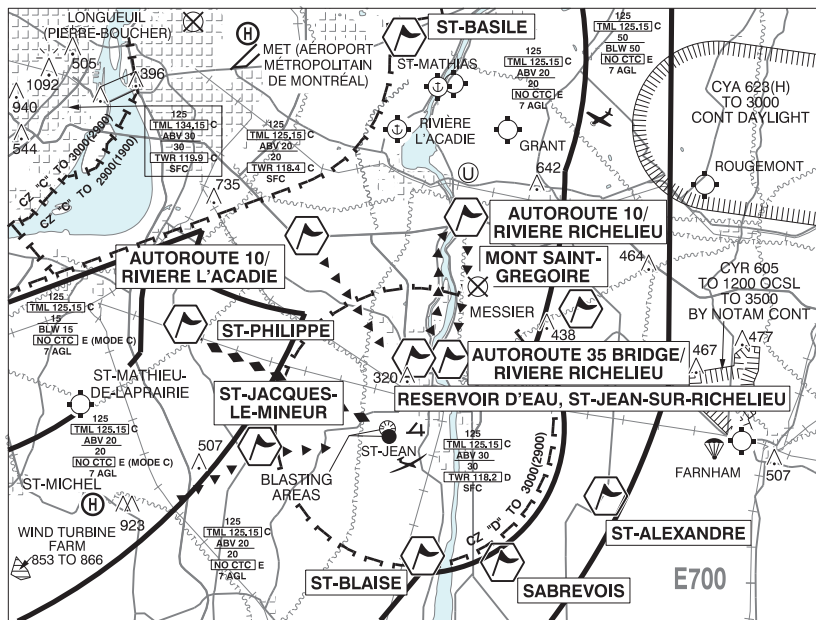
## AERODROME / FACILITY DIRECTORY

## ST-JEAN CHRYSOSTOME QC

CSG5

<b>REF</b>	N46 41 07 W71 09 06 2.6SE 17°W UTC-5(4) Elev 325' A5002	
<b>OPR</b>	Aérodrome de St-Jean Chrysostome 418-834-6508 Reg 48 hr PPR	
<b>PF</b>	A-1,2 C-3,4,5 D-6	
<b>FLT PLN</b>	(bil)	
<b>FIC</b>	Québec 866-GOMÉTÉO or 866-WXBRIEF (Toll free within Canada) or 866-541-4105 (Toll free within Canada & USA)	
<b>SERVICES</b>		
<b>FUEL</b>	100LL, JA	
<b>S</b>	1,2,4,5	
<b>RWY DATA</b>	Rwy 02/20 3300x40 ASPH/GRVL, centre 30' ASPH Thld 02 displ 300'. Rwy 06/24 2700x50 GRVL/ASPH 500' ASPH Thld 06 displ 500'.	
<b>RCR</b>	Opr No win maint.	
<b>LIGHTING</b>	02-AS(TE ME), 20-AS(TE ME) first 300' Rwy 02 not lgtd	
<b>COMM</b>		
<b>ATF</b>	tfc 123.2 5NM 1500 ASL excluding CYQB CZ and Québec TCA	
<b>PRO</b>	Rgt hand circuits Rwy 24 (CAR 602.96) <b>VFR Codes:</b> In order to minimize delays, ATC freq congestion and for better airspace management, as well as to improve safety, ctc the Montreal ACC at 877-YUL-CODE (877-985-2633), or the FIC at 1-866-GOMETEO or 1-866-WX BRIEF, to provide ATC with info pertaining to your flt to obtain your transponder code at least 30 min prior to a flight into Quebec Class C airspace.	
<b>CAUTION</b>	P-line on apch Rwy 02. A/D status unkn aprx 1.6NM S of A/D. RPAS 1NM SW of A/D.	

**ST-JEAN VFR TERMINAL PROCEDURES CHART**



NAME	IDENT	LAT/LONG
AUTOROUTE 10 / RIVIERE L'ACADIE	VCACD	N45° 24' 28" W073° 22' 06"
AUTOROUTE 10 / RIVIERE RICHELIEU	VCRIC	N45° 24' 55" W073° 14' 34"
AUTOROUTE 35 BRIDGE / RIVIERE RICHELIEU	VCRLU	N45° 19' 37" W073° 15' 36"
MONT SAINT-GREGOIRE	VCGGR	N45° 21' 24" W073° 08' 55"
RESERVOIR D'EAU, ST-JEAN-SUR-RICHELIEU	VCRSV	N45° 19' 39" W073° 17' 23"
SABREVOIS	VCSBR	N45° 12' 24" W073° 13' 44"
ST-ALEXANDRE	VCALX	N45° 14' 23" W073° 06' 59"
ST-BASILE	VCSTB	N45° 31' 36" W073° 17' 20"
ST-BLAISE	VCBLA	N45° 13' 14" W073° 18' 04"
ST-JACQUES-LE-MINEUR	VCSJM	N45° 16' 29" W073° 25' 11"
ST-PHILIPPE	VCLPR	N45° 21' 10" W073° 28' 29"

## QUEBEC

## AERODROME / FACILITY DIRECTORY

## ST-LAMBERT-DE-LAUZON QC

CST7

<b>REF</b>	N46 33 37 W71 10 57 1.8SE 15°W (2025) UTC-5(4) Elev 475' A5002	
<b>OPR</b>	L'Aéro-parc 418-889-8989 Reg PPR	
<b>PF</b>	A-1 C-2,3,5 D-4	
<b>FLT PLN</b>	(bil)	
<b>FIC</b>	Québec 866-GOMÉTÉO or 866-WXBRIEF (Toll free within Canada) or 866-541-4105 (Toll free within Canada & USA)	
<b>SERVICES</b>		
<b>S</b>	1,2,3,4,5,6	
<b>RWY DATA</b>	Rwy 06/24 2400x50 GRASS Max wt 2500 lbs	
<b>RCR</b>	Opr Ltd win maint	
<b>COMM</b>	(bil)	
<b>ATF</b>	tfc 123.5 5NM 3500 ASL excluding the airspace that lies within Québec Class C airspace.	
<b>PRO</b>	Rgt hand circuits Rwy 06 (CAR 602.96). No touch & go. Rwy 24 dep, no turns before crossing river. <b>VFR Codes:</b> In order to minimize delays, ATC freq congestion and for better airspace management, as well as to improve safety, ctc the Montreal ACC at 877-YUL-CODE (877-985-2633), or the FIC at 1-866-GOMETEO or 1-866-WX BRIEF, to provide ATC with info pertaining to your flt to obtain your transponder code at least 30 min prior to a flight into Quebec Class C airspace.	
<b>CAUTION</b>	Ultra-light activities. Class C airspace north of A/D from 1500 ASL, see Québec VTPC.	