
FLIGHT PLAN & SITE SURVEY

D 486-5723 PORTAGE PLANES RADIO CONTROL CLUB- Off
The Top Meeting Site

May 22, 2026



IMPORTANT NOTICE

Please ensure you have received all required authorizations prior to flight. This Site Survey was created using RPAS Wilco. The user accepts all responsibility for the accuracy of the information.

Terms & Conditions: rpswilco.com/#tnc

Mission Information

D 486-5723 PORTAGE PLANES RADIO CONTROL CLUB- OFF THE TOP MEETING SITE

FLIGHT DETAILS

Reference No:	MAAC-486-5723
Project Name:	PORTAGE PLANES RADIO CONTROL CLUB
Pilot Name:	MAAC
Pilot Certificate:	
Mission Type:	VLOS
Flight Start:	May 22, 2026 02:02 PM
Flight End:	May 22, 2026 03:02 PM

LOCATION DETAILS

Flight Address:	Off The Top Meeting Site
Latitude:	49° 58' 23.27" N (49.973)
Longitude:	98° 17' 11.98" W (-98.287)
Altitude / Radius:	400 ft / 926 m (0.5 nm)
Classification:	UNCONTROLLED
FIR / Contact:	CZWG / 204-983-8338

REPORT CONTENTS

Site Survey • Obstacles (if available) • Nearby Aerodromes • Canadian Aviation Regulations • GFA • Aerodrome Supplements • METAR & TAF • NOTAMs • CFS





Flight Map & MODEL Details

MISSION LOCATION SURVEY

FLIGHT AREA MAP



MISSION LOCATION DETAILS

ROLE	LATITUDE	LONGITUDE
 MODEL	49° 58' 23.27" N 49.973	98° 17' 11.98" W -98.287
 Pilot		
 Payload Op.		
 Observer		

Airspace Classification

MISSION LOCATION SURVEY

AIRSPACE MAP



OVERLYING AIRSPACES

Class	Name	Floor	Ceiling
D	Southport, MB [CZ]	SFC	4000MSL
E	Southport, MB [TA]	700AGL	18000MSL
B	Winnipeg, MB a) [TCA]	12500MSL	18000MSL
C	Winnipeg, MB c) [TCA]	3000AGL	18000MSL
C	Winnipeg, MB d) [TCA]	4000MSL	12500MSL
B	Brandon, MB b) [CAE]	12500MSL	18000MSL
E	T706 Fixed RNAV Route	2200AGL	18000MSL
E	Winnipeg, MB a) [CAE]	6500AGL	18000MSL

NEAREST AERODROMES & DISTANCE FROM OPERATION

PORTAGE LA PRAIRIE (NORTH) (CJ22 - AERODROME - Reg)	Lat: 49.993	Long: -98.303	2.507KM	1.354NM	NW
PORTAGE (DISTRICT GENERAL HOSP) (CPO2 - HELIPORT - Cert)	Lat: 49.966	Long: -98.282	0.85KM	0.459NM	SE
SOUTHPORT (CYPG - AERODROME/HELIPORT - Cert)	Lat: 49.903	Long: -98.274	7.845KM	4.236NM	S

MANITOBA

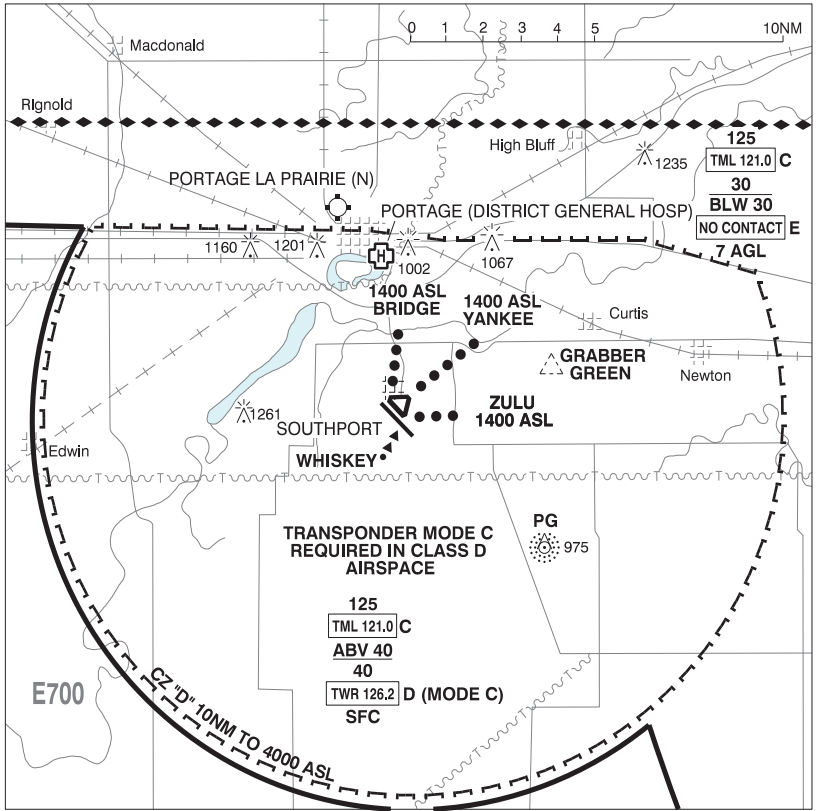
AERODROME / FACILITY DIRECTORY

PORTAGE LA PRAIRIE (NORTH) MB

CJ22

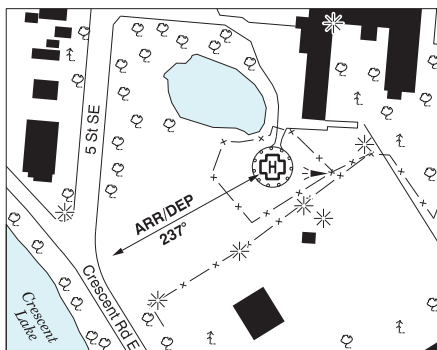
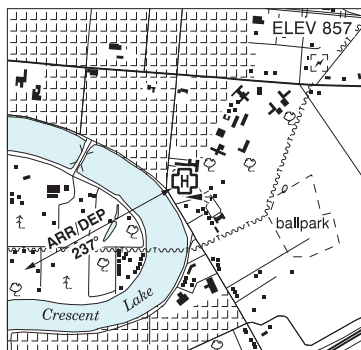
REF	N49 59 36 W98 18 12 Adj NW 4°E (2017) UTC-6(5) Elev 860' VTA A5007	
OPR	Portage Flying Club Rick Yaskiw 204-857-4212 Reg	
PF	C-1,2,3,4,5,6 A/D clsd in win	
FLT PLN	Pilots to open/close VFR flt plan with Edmonton rdo, FISE or by phone.	
FIC	Edmonton 866-WXBRIEF (Toll free within Canada) or 866-541-4102 (Toll free within Canada & USA)	
SERVICES		
FUEL	100LL PN	
S	4,5,6	
RWY DATA	Rwy 18(182°)/36(002°) 2048x75 GRASS Rwy 14(144°)/32(324°) 2971x90 GRASS Rwy 09(093°)/27(273°) 1952x75 GRASS	
RCR	Opr ltd win maint	
COMM		
ATF	tfc 122.8 5NM 3000 ASL excluding the YPG Class "D" CZ.	
PRO	Rgt hand circuits Rwy 18, 27 & 32 (CAR 602.96), circuit hgt 1600 ASL. Aprt in close proximity to Southport class "D" CZ, for flt info ctc Southport TWR.	
CAUTION	Bldgs and P-lines 1000' N thld Rwy 14 and parallel to E side Rwy 14.	

PORTAGE VFR TERMINAL PROCEDURES CHART



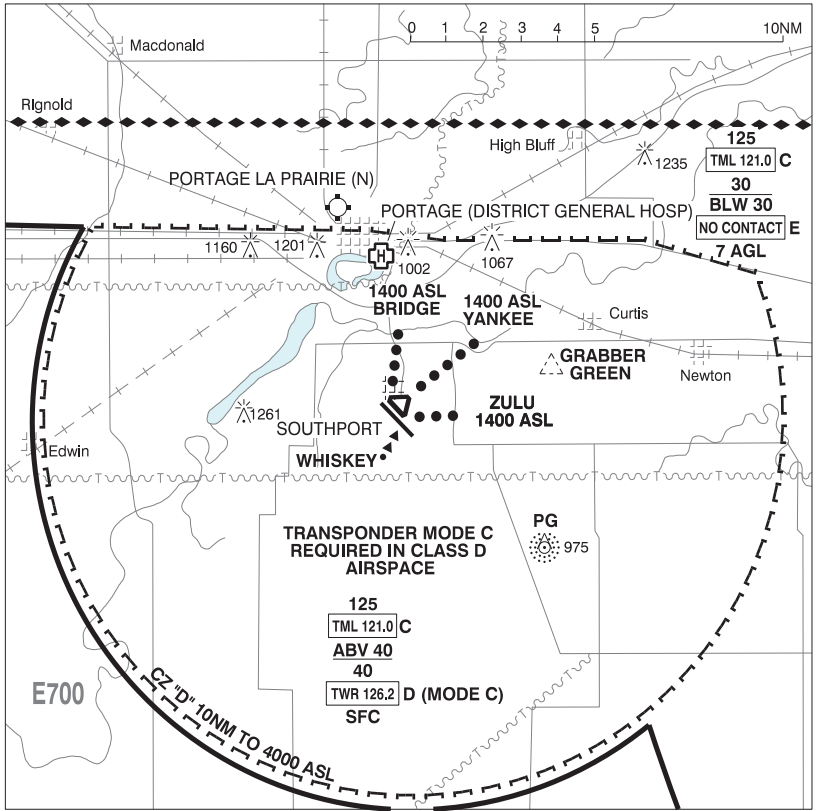
PORTAGE (DISTRICT GENERAL HOSP) MB (HELI)

CPO2



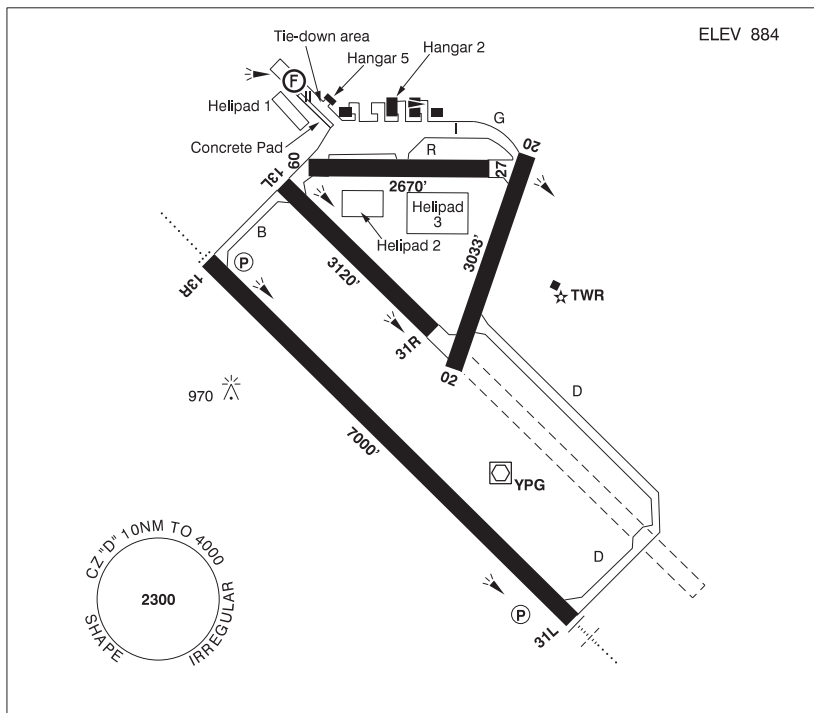
REF	N49 57 59 W98 16 56 Adj 4°E (2024) UTC-6(5) Elev 857' A1902 A5007
OPR	Southern Health Portage District General Hosp 204-239-2245 Cert NVIS OPS AUTH PPR
FLT PLN	
FIG	Edmonton 866-WXBRIEF (Toll free within Canada) or 866-541-4102 (Toll free within Canada & USA)
HELI DATA	FATO 82' dia CONC/ASPH TLOF 33' dia CONC Safety Area 110 dia' Max heli overall length 54.7' (CAR 602.96)
RCR	Opr
LIGHTING	RF(FL)
COMM	
TWR	Southport twr 126.2 (V) 14-24Z† Mon-Fri exc hols
ATF	tfc 126.2 00-14Z† Mon-Fri, H24 Sat, Sun and hols 10NM irregular shape centred on Southport A/D 3.8NM S 4000 ASL see PORTAGE VTPC.
PRO	Arr/dep 237° fr heli (H1), NVIS reqrd for ngt use (CAR 602.96).
CAUTION	P-lines E of heli. 4' fence parallel to flt path.

PORTAGE VFR TERMINAL PROCEDURES CHART



PORTAGE LA PRAIRIE / SOUTHPORT MB

CYPC



REF	N49 54 11 W98 16 26 4S 4°E (2016) UTC-6(5) Elev 884' VTA A5007 LO4 HI4 CAP
OPR	Southport Aerospace Centre Inc 204-428-6030 14-24Z‡ exc hols, O/T by NOTAM. Mil fit ops 866-315-2069 Cert
PF	B-1,2 (ltd hrs), 5,7 C-2,3,4,6
FLT PLN	Pilots to open/close VFR fit plan with Edmonton rdo, FISE or by phone.
FIC	Edmonton 866-WXBRIEF (Toll free within Canada) or 866-541-4102 (Toll free within Canada & USA)
WX	204-428-2444 ltd hrs (see opr). O/T for mil only JMC 1-800-WXMETEO (996-3836). METAR dur fit ops. TAF dur fit ops, issue times depending on mil requirements. AUTO (see COMM).
SERVICES	Call out chg may be levied for one or more svcs
FUEL	100LL, JA-1 (FSII avbl), SP 14-04Z‡ Mon-Fri exc hols. Ctc Tran Svcs 204-428-2435 O/T PN 204-872-0570
OIL	80, 100, Turbo Oil 2380
ARFF	PARTICIPATING CAT 2 14-24Z‡ Mon-Fri exc hols
S	1,4,5,6
PVT ADV	Tran Svcs 123.0

MANITOBA

AERODROME / FACILITY DIRECTORY

PORTAGE LA PRAIRIE / SOUTHPORT MB (Cont'd)

CYPG

RWY DATA	Rwy 13R(130°)/31L(310°) 7000x148 ASPH Rwy 13L(130°)/31R(310°) 3120x98 ASPH Rwy 09(085°)/27(265°) 2670x98 ASPH Rwy 02(015°)/20(195°) 3033x150 ASPH Rwy 20 up 0.3% RESA: 13R/31L 984'
RWY CERT	Rwy 13R/31L AGN IIIA Rwy 13L/31R AGN II Rwy 09/27 AGN II Rwy 02/20 AGN IIIA
TWY CERT	Twy R AGN II
HELI DATA	FATO 87' x 87' CONC Helipad 1: 607' x 148' GRASS/SNOW Helipad 2: 492' x 197' GRASS/SNOW Helipad 3: 656' x 328' GRASS/SNOW
APRON	No itinerant acft on Apron I. Itinerant acft prkg S of hg 5 on Apron II. Jet and large acft prkg on concrete pad on S side of Apron II. Heli FATO on S side of Apron II. Light acft use tie-downs on N side of Apron II. Parking Fees.
RCR	Opr CRFI, Mil Flt Ops 204-428-2444, 14-24Z† exc hols O/T by NOTAM. PCN ctc Opr. Rwy 09/27 wt rstd to 15,500 lbs. Call out chgs.
LIGHTING	02-(TE ME), 20-(TE ME), 13R-AO(TE HI) P2, 31L-AN(TE HI) P2 ARCAL-126.2 type K
COMM	
ATIS	120.85 14-24Z† Mon-Fri exc hols
GND	121.7 14-24Z† Mon-Fri exc hols
TWR	126.2 (V) 14-24Z† Mon-Fri exc hols
ATF	tfc 126.2 00-14Z† Mon-Fri, H24 Sat, Sun & hols 10NM 4000 ASL
ARR	Winnipeg Tml 121.0
DEP	Winnipeg Tml 121.0
VFR ADV	Winnipeg Tml 121.0
MIL	3 CFFTS Ops 204-428-4139
AUTO	123.175
NAV	All Nav aids Unmonitored when Twr clsd.
NDB	PORTAGE PG 353 (L) N49 50 30 W98 10 47 Pvt
VOR/DME	PORTAGE YPG 114.6 Ch 93 N49 53 59 W98 16 02 (902') Pvt
ILS	IPG 109.7 (Rwy 31L) Pvt
PRO	Rgt hand circuits Rws 13R, 20, 27 & 31R (CAR 602.96). Circuit alt 02/20, 09/27 & 13L/31R 1900 ASL, 13R/31L 2500 ASL. Arr ctc twr 126.2 prior to "D" CZ. VFR circuits & multiple IFR apch for tng by itinerant acft may be rstd due lcl tfc. Extv heli tng NE quad CZ within 5NM. Avoid satellite fld (Grabber Green) N49 54 52 W98 09 38, 4NM NE (see VTPC) or cross at 2500 ASL or above.
HELI	Dep & arr FATO 1 on Apron II as directed by twr depicted rtes (see VTPC). Not above 1400 ASL til clear of circuits.
CAUTION	Extv flt tng in the lcl area. Hrs of ops may be extended by NOTAM. Ocsl extv ngt flt tng activity. Attempt ctc with Southport twr 126.2 prior to entering CZ. Lgtd twr 1010 ASL (150 AGL) aprx 0.9NM N of A/D.