

---

# FLIGHT PLAN & SITE SURVEY

---

A 18-3867 MEDICINE HAT RC'ERS INC.- 5260 BOX SPRINGS  
RD. NW

May 22, 2026



**IMPORTANT NOTICE**

Please ensure you have received all required authorizations prior to flight. This Site Survey was created using RPAS Wilco. The user accepts all responsibility for the accuracy of the information.

Terms & Conditions: [rpswilco.com/#tnc](https://rpswilco.com/#tnc)

# Mission Information

A 18-3867 MEDICINE HAT RC'ERS INC.- 5260 BOX SPRINGS RD. NW

## FLIGHT DETAILS

Reference No:	<b>MAAC-18-3867</b>
Project Name:	<b>MEDICINE HAT RC'ERS INC.</b>
Pilot Name:	<b>MAAC</b>
Pilot Certificate:	
Mission Type:	<b>VLOS</b>
Flight Start:	<b>May 22, 2026 08:24 PM</b>
Flight End:	<b>May 22, 2026 09:24 PM</b>

## LOCATION DETAILS

Flight Address:	<b>5260 BOX SPRINGS RD. NW</b>
Latitude:	<b>50° 5' 49.91" N ( 50.097 )</b>
Longitude:	<b>110° 44' 8.61" W ( -110.736 )</b>
Field Elevation:	<b>2352 ft MSL</b>
Altitude / Radius:	<b>400 ft / 926 m ( 0.5 nm )</b>
Classification:	<b>UNCONTROLLED</b>
FIR / Contact:	<b>CZEG / 780-890-8397</b>

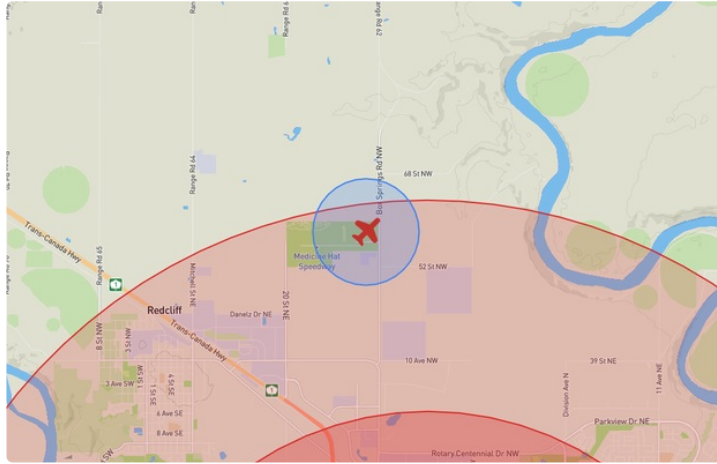
## REPORT CONTENTS

Site Survey • Obstacles (if available) • Nearby Aerodromes • Canadian Aviation Regulations • GFA • Aerodrome Supplements • METAR & TAF • NOTAMs • CFS





# Flight Map & MODEL Details

MISSION LOCATION SURVEY

## FLIGHT AREA MAP



## MISSION LOCATION DETAILS

ROLE	LATITUDE	LONGITUDE
 MODEL	50° 5' 49.91" N 50.097	110° 44' 8.61" W -110.736
 Pilot		
 Payload Op.		
 Observer		

# Airspace Classification

MISSION LOCATION SURVEY

## AIRSPACE MAP



## OVERLYING AIRSPACES

Class	Name	Floor	Ceiling
E	Medicine Hat, AB [CAE]	2200AGL	18000MSL
F	CYR230 SUFFIELD, AB	SFC	999STD
E	Medicine Hat, AB [TA]	700AGL	18000MSL
E	Medicine Hat, AB [CZ]	SFC	3000GND
E	T628 Fixed RNAV Route	2200AGL	18000MSL

## NEAREST AERODROMES & DISTANCE FROM OPERATION

MEDICINE HAT (CYXH - AERODROME - Cert)	Lat: 50.019	Long: -110.721	8.775KM	4.738NM	S
MEDICINE HAT (REGIONAL HOSPITAL) (CMH5 - HELIPORT - Cert)	Lat: 50.035	Long: -110.702	7.324KM	3.955NM	S
SCHLENKER (CFZ3 - AERODROME - Reg)	Lat: 49.972	Long: -110.724	13.923KM	7.518NM	S

## ALBERTA

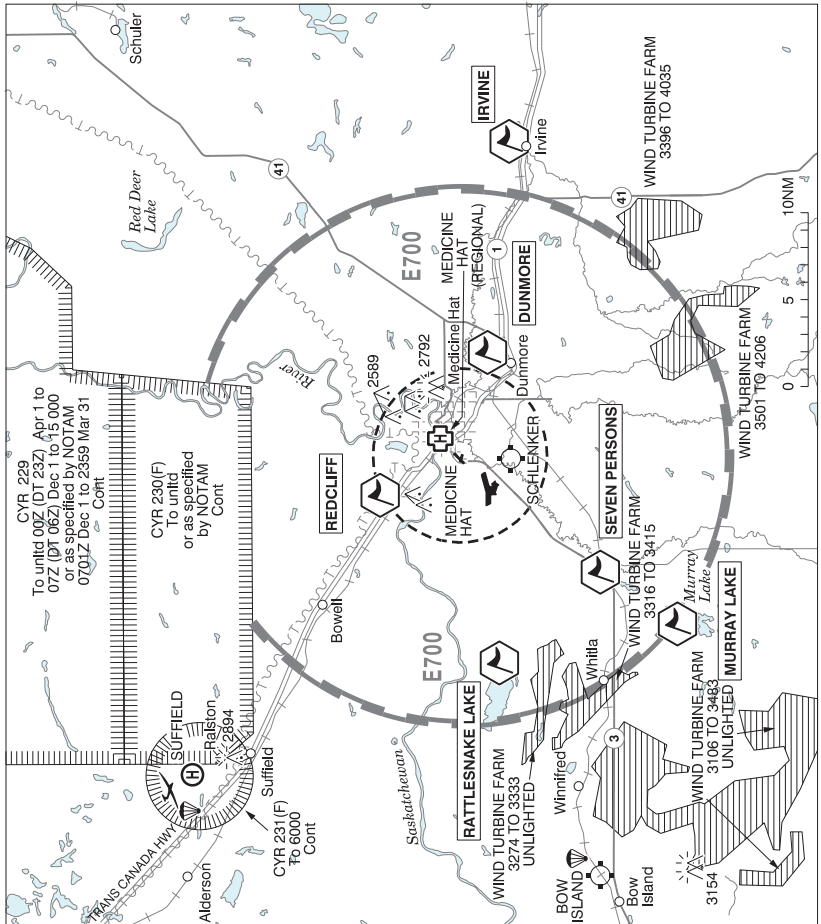
## AERODROME / FACILITY DIRECTORY

## MEDICINE HAT AB

CYXH

<b>REF</b>	N50 01 08 W110 43 14 2SW 13°E (2013) UTC-7(6) Elev 2351' A5005 A5006 LO2 HI3 CAP	
<b>OPR</b>	Muni 403-525-6115 Cert Ldg fees	
<b>PF</b>	A-1,2,3,6,7 C-4,5	
<b>FLT PLN</b>	<b>FIC</b> Edmonton 866-WXBRIEF (Toll free within Canada) or 866-541-4102 (Toll free within Canada & USA) <b>ACC</b> Edmonton IFR 888-358-7526 <b>WX</b> METAR 1245-0345Z O/T METAR AUTO (see COMM) TAF H24, issue times: 00, 06, 12, 18Z. WxCam	
<b>SERVICES</b>	O/T call out chg	
<b>FUEL</b>	100LL, JA-1 1130-0400Z‡ Super T Aviation, O/T call out chg may apply	
<b>OIL</b>	All	
<b>S</b>	1,2,4,5,6	
<b>PVT ADV</b>	Super T Aviation 122.75, 888-541-6636 or 403-548-6636, O/T 403-928-7133.	
<b>RWY DATA</b>	Rwy 03(032°)/21(212°) 5003x150 ASPH Rwy 09(095°)/27(275°) 2850x100 ASPH	
<b>RWY CERT</b>	Rwy 03/21 AGN IIIA Rwy 09/27 AGN I	
<b>TWY CERT</b>	Twy B AGN I	
<b>TWY</b>	Twy B ltd to 30,000 lbs; Twy A ltd to 150,000 lbs.	
<b>APRON</b>	Apron I ltd to 150,000 lbs, Apron II & III ltd to 30,000 lbs, Apron IV tie-down area ltd to 10,000 lbs	
<b>RCR</b>	Opr Win maint 15-23Z‡ Mon-Fri exc hols O/T 1 hr PN ctc 403-581-7200. CRFI, PCN. Call-out fees may be levied.	
<b>LIGHTING</b>	03-AO(TE ME) P2, 21-AO(TE ME) P2, 09-(TE ME), 27-(TE ME) O/R thru FSS ARCAL-122.2 type K when FSS clsd	
<b>COMM</b>	<b>RADIO</b> 122.2 PTC avbl (V) 1245-0345Z (emerg only 403-526-3040) <b>RCO</b> Edmonton rdo 123.375 (FISE) 126.7 (bcst) <b>ATIS</b> 124.875 1245-0345Z <b>MF</b> rdo 122.2 1245-0345Z O/T tfc 5NM 5400 ASL (CAR 602.98) <b>AWOS</b> 124.875 0345-1245Z	
<b>PRO</b>	Arr/dep reports & IFR clearances 0345-1245Z ctc Edmonton rdo 123.375.	
<b>CAUTION</b>	Non-registered A/D (Harrison Field) 4.5NM SW CYXH aprt. Frequent light/ultralight acft activity. Grass rwy, orientation 17/35. Ditches N & S edges Rwy 27 E of Rwy 03/21. Ditches N edge Twy A & along N of Rwy 21 running E aprx 525' from Twy A. Migratory bird activity in vic of aprt Oct-Mar.	

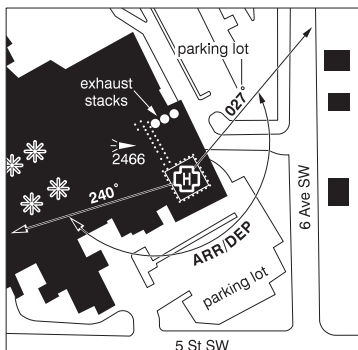
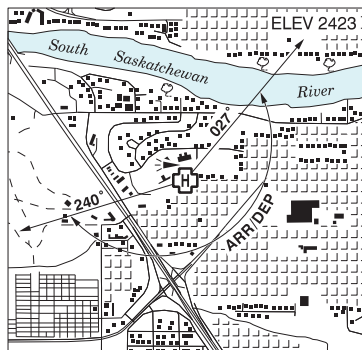
**MEDICINE HAT VFR TERMINAL PROCEDURES CHART**



NAME	IDENT	LAT/LONG
DUNMORE	VCDNM	N49° 58' 20" W110° 34' 55"
IRVINE	VICRV	N49° 56' 57" W110° 15' 58"
MURRAY LAKE	VCMUR	N49° 48' 18" W110° 57' 03"
RATTLESNAKE LAKE	VCRTL	N49° 58' 17" W111° 00' 59"
REDCLIFF	VCRCF	N50° 05' 30" W110° 48' 10"
SEVEN PERSONS	VCSVN	N49° 51' 56" W110° 54' 06"

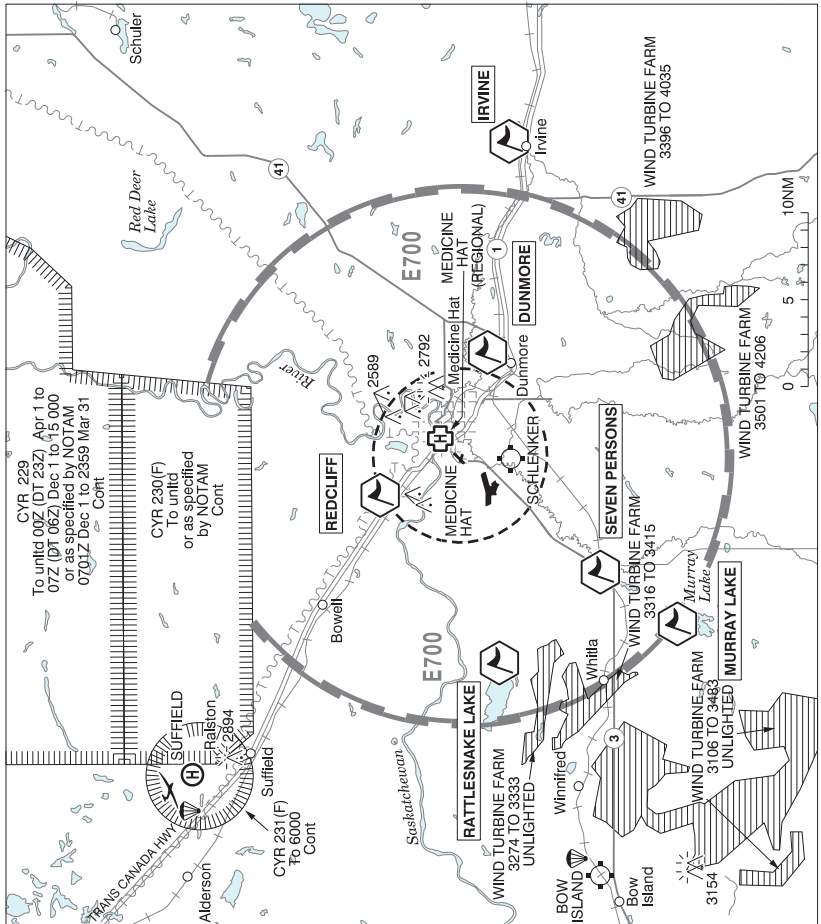
**MEDICINE HAT (REGIONAL HOSPITAL) AB (Heli)**

**CMH5**



<b>REF</b>	N50 02 07 W110 42 07 1WSW 13°E (2016) UTC-7(6) Elev 2423' A5005 A5006
<b>OPR</b>	Alberta Health Services 403-529-8099 Cert NVIS OPS AUTH PPR
<b>PF</b>	A-1 B-2,3,4,7,8 C-5,6
<b>FLT PLN</b>	
<b>FIC</b>	Edmonton 866-WXBRIEF (Toll free within Canada) or 866-541-4102 (Toll free within Canada & USA)
<b>ACC</b>	Edmonton IFR 888-358-7526
<b>HELI DATA</b>	FATO 86' dia rooftop non-supporting TLOF 57' x 57' CONC Safety Area 115' dia 17,000 lb Max heli overall length 57.4' (CAR 602.96)
<b>RCR</b>	Opr 1-888-999-3770
<b>LIGHTING</b>	RY(LO) yellow
<b>COMM</b>	
<b>RADIO</b>	Medicine Hat 122.2 (V) 1245-0345Z (emerg only 403-526-3040)
<b>RCO</b>	Edmonton rdo 123.375 (FISE) 126.7 (bcst)
<b>ATIS</b>	124.875 1245-0345Z
<b>MF</b>	Medicine Hat rdo 122.2 1245-0345Z O/T tfc 122.2 5NM centered on Medicine Hat A/D 1.2NM SW 5400 ASL (CAR 602.98)
<b>AWOS</b>	124.875 0345-1245Z
<b>PRO</b>	Arr/dep 027° to 240° fr heli, (H1) (CAR 602.96).
<b>CAUTION</b>	Hosp bldg W of heli marked with obst lgts. Bldg exhaust stacks 120' N of heli.

**MEDICINE HAT VFR TERMINAL PROCEDURES CHART**



NAME	IDENT	LAT/LONG
DUNMORE	VCDNM	N49° 58' 20" W110° 34' 55"
IRVINE	VICRV	N49° 56' 57" W110° 15' 58"
MURRAY LAKE	VCMUR	N49° 48' 18" W110° 57' 03"
RATTLESNAKE LAKE	VCRTL	N49° 58' 17" W111° 00' 59"
REDCLIFF	VCRCF	N50° 05' 30" W110° 48' 10"
SEVEN PERSONS	VCSVN	N49° 51' 56" W110° 54' 06"

## ALBERTA

## AERODROME / FACILITY DIRECTORY

## MEDICINE HAT / SCHLENKER AB

CFZ3

<b>REF</b>	N49 58 20 W110 43 25 5S 13°E (2013) UTC-7(6) Elev 2365' A5005 A5006	
<b>OPR</b>	Sherry Irvine 403-527-5497 or 403-594-9566 Reg	
<b>FLT PLN</b>	<b>FIC</b> Edmonton 866-WXBRIEF (Toll free within Canada) or 866-541-4102 (Toll free within Canada & USA) <b>ACC</b> Edmonton IFR 888-358-7526	
<b>RWY DATA</b>	Rwy 07(071°)/25(251°) 1636x75 GRASS Rwy 18(180°)/36(360°) 1662x75 GRASS	
<b>RCR</b>	Opr Ltd maint	
<b>COMM</b>	<b>RCO</b> Edmonton rdo 123.375 (FISE) 126.7 (bcst) <b>MF</b> rdo 122.2 1245-0345Z O/T tfc 122.2 5NM centred on Medicine Hat A/D 3.1NM N 5400 ASL (CAR 602.98)	
<b>PRO</b>	Arr/dep reports & IFR clearances 0345-1245Z ctc Edmonton rdo 123.375.	