
FLIGHT PLAN & SITE SURVEY

L 28-3887 OAKVILLE MFC INC.- DRUMQUIN PARK

May 22, 2026



IMPORTANT NOTICE

Please ensure you have received all required authorizations prior to flight. This Site Survey was created using RPAS Wilco. The user accepts all responsibility for the accuracy of the information.

Terms & Conditions: rpswilco.com/#tnc

Mission Information

L 28-3887 OAKVILLE MFC INC.- DRUMQUIN PARK

FLIGHT DETAILS

Reference No:	MAAC-28-3887
Project Name:	OAKVILLE MFC INC.
Pilot Name:	MAAC
Pilot Certificate:	
Mission Type:	VLOS
Flight Start:	May 22, 2026 10:24 PM
Flight End:	May 22, 2026 11:24 PM

LOCATION DETAILS

Flight Address:	DRUMQUIN PARK
Latitude:	43° 32' 2.12" N (43.534)
Longitude:	79° 47' 12.25" W (-79.787)
Field Elevation:	591 ft MSL
Altitude / Radius:	400 ft / 926 m (0.5 nm)
Classification:	UNCONTROLLED
FIR / Contact:	CZYZ / 905-676-4509

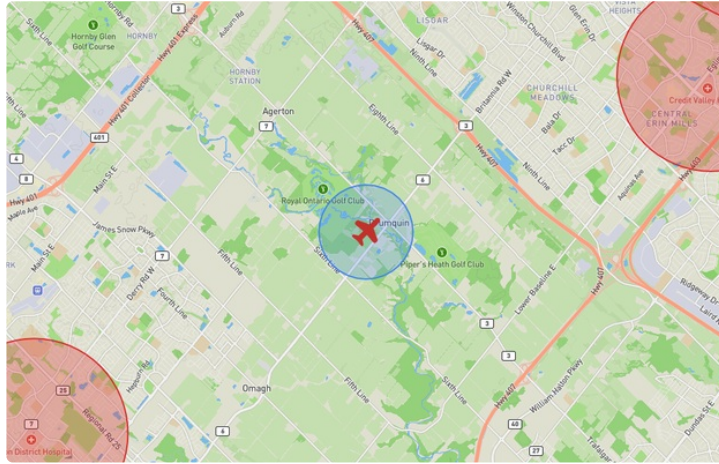
REPORT CONTENTS

Site Survey • Obstacles (if available) • Nearby Aerodromes • Canadian Aviation Regulations • GFA • Aerodrome Supplements • METAR & TAF • NOTAMs • CFS





Flight Map & MODEL Details

MISSION LOCATION SURVEY

FLIGHT AREA MAP



MISSION LOCATION DETAILS

ROLE	LATITUDE	LONGITUDE
 MODEL	43° 32' 2.12" N 43.534	79° 47' 12.25" W -79.787
 Pilot		
 Payload Op.		
 Observer		

Airspace Classification

MISSION LOCATION SURVEY

AIRSPACE MAP



OVERLYING AIRSPACES

Class	Name	Floor	Ceiling
E	Southern Ontario Low Level Control Area c) [CAE]	6500MSL	18000MSL
E	Toronto, ON [TSP]	6500MSL	12500MSL
C	Toronto, ON b) [TCA]	2000MSL	2500MSL
C	Toronto, ON a) [TCA]	1700MSL	2000MSL
C	Toronto/Lester B. Pearson Intl, ON [CZ]	SFC	2500MSL
E	3.4.1-43 [TA]	700AGL	18000MSL
E	Southern Ontario Low Level Control Area a) [CAE]	2500MSL	6500MSL
C	Toronto, ON c) [TCA]	2500MSL	3500MSL
C	Toronto, ON d) [TCA]	3500MSL	4500MSL
C	Toronto, ON e) [TCA]	4500MSL	12500MSL
E	T781 Fixed RNAV Route	2200AGL	18000MSL

NEAREST AERODROMES & DISTANCE FROM OPERATION

TORONTO (MISSISSAUGA CREDIT VALLEY HOSPITAL) (CPK6 - HELIPORT - Cert)	Lat: 43.561	Long: -79.703	7.444KM	4.019NM	NE
MILTON (DISTRICT HOSPITAL) (CPY2 - HELIPORT - Cert)	Lat: 43.498	Long: -79.868	7.64KM	4.125NM	SW
BURLINGTON EXECUTIVE (CZBA - AERODROME - Reg)	Lat: 43.441	Long: -79.85	11.486KM	6.202NM	SW

ONTARIO

AERODROME / FACILITY DIRECTORY

TORONTO (MISSISSAUGA CREDIT VALLEY HOSP) ON (Heli)

CPK6

REF	N43 33 41 W79 42 10 10°W (2019) UTC-5(4) Elev 523' VTA A5000	
OPR	Credit Valley Hosp 905-813-2200 Cert PPR	
FLT PLN	FIC London 866-WXBRIEF (Toll free within Canada) or 866-541-4104 (Toll free within Canada & USA)	
HELI DATA	FATO/TLOF 108' dia CONC Safety Area 144' dia Max heli overall length 57.5'	
RCR	Opr	
LIGHTING	DR RY(LO) RF(FL) ARCAL-123.2 type K one intensity only, key mic 3 times to turn floodlights off	
COMM	TWR Toronto 118.35 118.7 A/G Ambulance dispatch 129.275	
PRO	Arr/dep 078° fr heli (H1), day/night use. Arr/dep 245° fr heli (H1), day/night use.	
CAUTION	Chimney SSW aprx 150 AGL. Communications twr SW aprx 100 AGL. P-lines N & W all lgt'd & marked. Bldgs 0.3NM SW. Trees S to 100 AGL.	

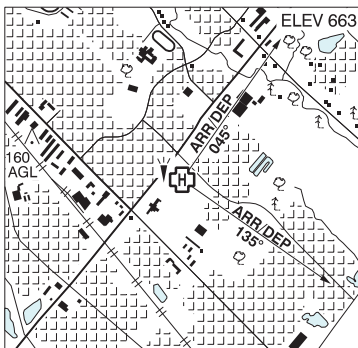
ONTARIO

AERODROME / FACILITY DIRECTORY

MILTON (DISTRICT HOSP) ON (Heli)

CPY2

REF	N43 29 55 W79 52 04 Adj S 10°W (2016) UTC-5(4) Elev 663' VTA A5000
OPR	Halton Health Care 905-845-2571 Cert PPR
FLT PLN	FIC London 866-WXBRIEF (Toll free within Canada) or 866-541-4104 (Toll free within Canada & USA)
HELI DATA	FATO 85' dia ASPH TLOF 33' dia CONC Safety Area 115' dia Max heli overall length 57.4'
RCR	Opr
LIGHTING	RY(LO) green RF(FL)
PRO	Arr/dep 045°-135° fr heli, slope 16% (H2), day/night use VFR only.
CAUTION	Hosp bldg SW of heli.



ONTARIO

AERODROME / FACILITY DIRECTORY

BURLINGTON EXECUTIVE ON

CZBA

REF	N43 26 29 W79 51 01 10°W (2013) UTC-5(4) Elev 601' VTA A5000 LO6 T2 CAP	
OPR	Vince Rossi 905-336-4010 (Day), 416-617-2428 (Night) Reg	
PF	C-1,2,3,4,5,6,7	
CUST	AOE/CAN	
FLT PLN		
FIC	London 866-WXBRIEF (Toll free within Canada) or 866-541-4104 (Toll free within Canada & USA)	
WX	AUTO (see COMM) WxCam	
SERVICES		
FUEL	100LL, JA cardlock dispenser	
OIL	100	
S	1,2,3,4,5	
RWY DATA	Rwy 14(141°)/32(321°) 3950x100 ASPH Rwy 14 down 0.61% Thld 14 displ 181'. Thld 32 displ 409'. Rwy 09(086°)/27(266°) 2464x50 asphalt Rwy 09 down 0.42% Thld 09 displ 328'. Thld 27 displ 254'	
RCR	Opr 13-23Z† or Spectrum Airways 905-336-4010	
LIGHTING	14-AS(TE LO) AP, 32-AS(TE LO) AP ARCAL-123.5 type J.	
COMM		
ATF	UNICOM ltd hrs O/T tfc 123.5 5NM below 2500 ASL	
TML	Toronto 119.3	
AUTO	122.55	
PRO	Circuit hgt 1500' ASL. Rgt hand circuits Rwy 27 & 32 (CAR 602.96). As soon as practicable after take-off fr Rwy 14 turn left 5° to avoid noise sensitive area. Helicopters follow fixed-wing circuit procedures. Rwy 14/32 preferential.	
CAUTION	50 ft trees on apch to Rwy 32 loc aprx 400' from thld of Rwy 32. Abn on top of twr 755 ASL (148 AGL) aprx 1635' N A/D. No runout area avbl beyond end of Rwy 09, 14, 27. Occasional wildlife activity.	