

---

# FLIGHT PLAN & SITE SURVEY

---

A 46-3914 VALLEY MODEL AERONAUTICS CLUB- VALLEY  
MODEL AERONAUTICS FLYING FIELD

May 22, 2026



**IMPORTANT NOTICE**

Please ensure you have received all required authorizations prior to flight. This Site Survey was created using RPAS Wilco. The user accepts all responsibility for the accuracy of the information.

Terms & Conditions: [rpswilco.com/#tnc](https://rpswilco.com/#tnc)

# Mission Information

A 46-3914 VALLEY MODEL AERONAUTICS CLUB- VALLEY MODEL AERONAUTICS FLYING FIELD

## FLIGHT DETAILS

Reference No:	<b>MAAC-46-3914</b>
Project Name:	<b>VALLEY MODEL AERONAUTICS CLUB</b>
Pilot Name:	<b>MAAC</b>
Pilot Certificate:	
Mission Type:	<b>VLOS</b>
Flight Start:	<b>May 22, 2026 08:25 PM</b>
Flight End:	<b>May 22, 2026 09:25 PM</b>

## LOCATION DETAILS

Flight Address:	<b>VALLEY MODEL AERONAUTICS FLYING FIELD</b>
Latitude:	<b>53° 19' 3.73" N ( 53.318 )</b>
Longitude:	<b>114° 58' 25.27" W ( -114.974 )</b>
Field Elevation:	<b>2680 ft MSL</b>
Altitude / Radius:	<b>400 ft / 926 m ( 0.5 nm )</b>
Classification:	<b>UNCONTROLLED</b>
FIR / Contact:	<b>CZEG / 780-890-8397</b>

## REPORT CONTENTS

Site Survey • Obstacles (if available) • Nearby Aerodromes • Canadian Aviation Regulations • GFA • Aerodrome Supplements • METAR & TAF • NOTAMs • CFS



# Airspace Classification

MISSION LOCATION SURVEY

## AIRSPACE MAP



## OVERLYING AIRSPACES

Class	Name	Floor	Ceiling
E	T980 Fixed RNAV Route	2200AGL	18000MSL
E	T789 Fixed RNAV Route	2200AGL	18000MSL
B	Edmonton, AB a) [CAE]	12500MSL	18000MSL

## NEAREST AERODROMES & DISTANCE FROM OPERATION

DRAYTON VALLEY INDUSTRIAL (CER3 - AERODROME - Reg)	Lat: 53.263	Long: -114.958	6.162KM	3.327NM	S
DRAYTON VALLEY (HOSP AND CARE CENTRE) (CFV9 - HELIPORT - Cert)	Lat: 53.212	Long: -114.971	11.731KM	6.334NM	S
LOCHE MIST FARMS (CJ)3 - AERODROME - Reg)	Lat: 53.546	Long: -115.261	31.746KM	17.141NM	NW

## ALBERTA

## AERODROME / FACILITY DIRECTORY

## DRAYTON VALLEY INDUSTRIAL AB

CER3

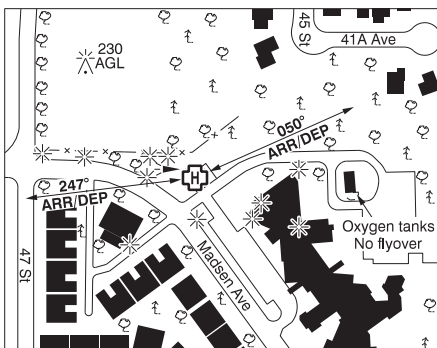
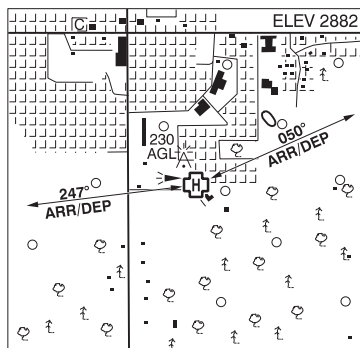
<b>REF</b>	N53 15 48 W114 57 31 2.5NE 16°E (2012) UTC-7(6) Elev 2774' A5014 A5015 LO2 CAP		ELEV 2774
<b>OPR</b>	PRAA 780-514-8013 or 866-719-9059 Reg		
<b>PF</b>	B-1 C-2,3,4,5,6		
<b>FLT PLN</b>			
<b>    FIC</b>	Edmonton 866-WXBRIEF (Toll free within Canada) or 866-541-4102 (Toll free within Canada & USA)		
<b>    ACC</b>	Edmonton IFR 888-358-7526		
<b>SERVICES</b>			
<b>    FUEL</b>	100LL self serve Pembina Regional Aerodrome Association 780-514-8013		
<b>    S</b>	1,2,4,5,6		
<b>RWY DATA</b>	Rwy 14(144°)/32(324°) 5065x75 ASPH Rwy 14 down 0.39% Thld 14 displ 1492' AGN II		
<b>    RCR</b>	Opr Ltd maint		
<b>LIGHTING</b>	14-(TE ME) P1, 32-(TE ME) P1 ARCAL-122.8 type K		
<b>COMM</b>			
<b>    ATF</b>	UNICOM ltd hrs O/T tfc 122.8 5NM 5800 ASL		
<b>CAUTION</b>	Act on opposite ends of rwy may not be visible to each other. Wild animals may stray onto rwy. RPAS activity 3.3 NM NNW of A/D max 400 AGL. Grass tkof/lldg area 2130'x50' adj E Rwy 14/32, SE of Twy A. May be soft when wet. No win maint.		

## ALBERTA

## AERODROME / FACILITY DIRECTORY

## DRAYTON VALLEY (HOSP &amp; CARE CENTRE) AB (Heli)

CFV9



<b>REF</b>	N53 12 44 W114 58 15 16°E (2013) UTC-7(6) Elev 2882' A5014 A5015 CAP
<b>OPR</b>	Alberta Health Services 780-542-5321 Cert NVIS OPS AUTH PPR
<b>PF</b>	C-1,2,3,4,5,6
<b>FLT PLN</b>	
<b>FIC</b>	Edmonton 866-WXBRIEF (Toll free within Canada) or 866-541-4102 (Toll free within Canada & USA)
<b>ACC</b>	Edmonton IFR 888-358-7526
<b>WX</b>	ALTIMETER ltd hrs (see COMM)
<b>HELI DATA</b>	FATO 86' dia non-supporting TLOF 57' dia CONC Safety Area 115' dia Elevated Max heli weight 17,000 lbs, Max heli overall length 57.4' (CAR 602.96)
<b>LIGHTING</b>	RY(LO) PN
<b>COMM</b>	
<b>ATF</b>	UNICOM (AU) ltd hrs O/T tfc 122.8 5NM centered on Drayton Valley Industrial A/D 3.3NM N 5800 ASL
<b>PRO</b>	Arr/dep 050° & 247° fr heli (H1), NVIS rqr'd for night use, all flt paths (CAR 602.96)
<b>CAUTION</b>	Antenna twr aprx 366' NW heli 3082 ASL (230 AGL). Lgtd and marked P-lines adj S and W of heli. Lgtd and marked lgt poles 28 AGL E, SE and S of heli.

**ALBERTA**

**AERODROME / FACILITY DIRECTORY**

**WILDWOOD / LOCHE MIST FARMS AB**

**CJJ3**

<b>REF</b>	N53 32 47 W115 15 38 3.9SSW 16°E (2011) UTC-7(6) Elev 2880' A5014	
<b>OPR</b>	Jens Jorgensen 780-325-2661 or 780-441-5451 Reg	
<b>PF</b>	B-1 C-2,5	
<b>FLT PLN</b>		
<b>FIC</b>	Edmonton 866-WXBRIEF (Toll free within Canada) or 866-541-4102 (Toll free within Canada & USA)	
<b>SERVICES</b>		
<b>OIL</b>	15W50	
<b>RWY DATA</b>	Rwy 07(071°)/25(251°) 2300x60 GRASS	
<b>RCR</b>	Opr Ltd win maint.	
<b>LIGHTING</b>	07-(RR) 25-(RR) Lgtd WI avbl O/R	
<b>COMM</b>		
<b>ATF</b>	tfc 123.2 5NM 5900 ASL	
<b>CAUTION</b>	Possible maint eqpt on rwy. Acft entering via twy may not be visible fr other end of rwy. Marked p-line aprx 314' E Thld 25. 10' fence 287' fr Thld 07. Trees 615' fr Thld 07. Parallel fences 120' apart along both sides of rwy. Wildlife in vic of rwy.	