

---

# FLIGHT PLAN & SITE SURVEY

---

B 48-3917 CAPE BRETON RADIO CONTROL MODELLERS-  
MARGAREE AIRPORT

May 22, 2026



**IMPORTANT NOTICE**

Please ensure you have received all required authorizations prior to flight. This Site Survey was created using RPAS Wilco. The user accepts all responsibility for the accuracy of the information.

Terms & Conditions: [rpaswilco.com/#tnc](https://rpaswilco.com/#tnc)

# Mission Information

B 48-3917 CAPE BRETON RADIO CONTROL MODELLERS- MARGAREE AIRPORT

## FLIGHT DETAILS

Reference No:	<b>MAAC-48-3917</b>
Project Name:	<b>CAPE BRETON RADIO CONTROL MODELLERS</b>
Pilot Name:	<b>MAAC</b>
Pilot Certificate:	
Mission Type:	<b>VLOS</b>
Flight Start:	<b>May 22, 2026 11:25 PM</b>
Flight End:	<b>May 23, 2026 12:25 AM</b>

## LOCATION DETAILS

Flight Address:	<b>MARGAREE AIRPORT</b>
Latitude:	<b>46° 20' 36.50" N ( 46.343 )</b>
Longitude:	<b>60° 58' 53.00" W ( -60.981 )</b>
Field Elevation:	<b>164 ft MSL</b>
Altitude / Radius:	<b>400 ft / 926 m ( 0.5 nm )</b>
Classification:	<b>UNCONTROLLED</b>
FIR / Contact:	<b>CZQM / 506-867-7173</b>

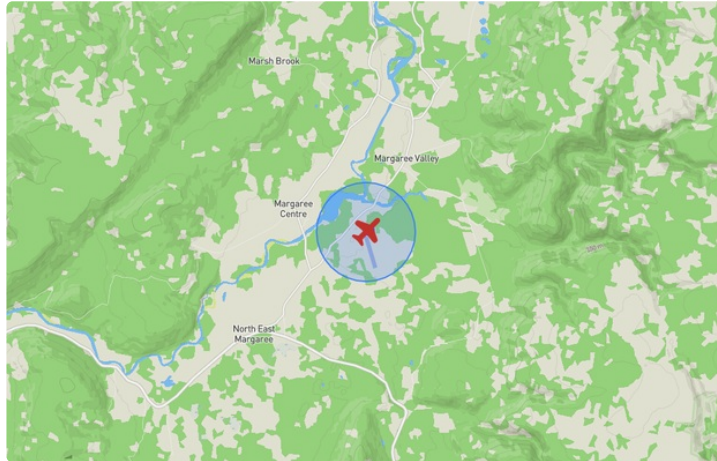
## REPORT CONTENTS

Site Survey • Obstacles (if available) • Nearby Aerodromes • Canadian Aviation Regulations • GFA • Aerodrome Supplements • METAR & TAF • NOTAMs • CFS





# Flight Map & MODEL Details

MISSION LOCATION SURVEY

## FLIGHT AREA MAP



## MISSION LOCATION DETAILS

ROLE	LATITUDE	LONGITUDE
 MODEL	46° 20' 36.50" N 46.343	60° 58' 53.00" W -60.981
 Pilot		
 Payload Op.		
 Observer		

# Airspace Classification

MISSION LOCATION SURVEY

## AIRSPACE MAP



## OVERLYING AIRSPACES

Class	Name	Floor	Ceiling
E	T735 Fixed RNAV Route	2200AGL	18000MSL

## NEAREST AERODROMES & DISTANCE FROM OPERATION

BADDECK (GUNEDEN) (CDW2 - AERODROME - Reg)	Lat: 46.164	Long: -60.784	25.049KM	13.525NM	SE
INVERNESS(CONSOLIDATED MEMORIAL HOSPITAL) (CNV2 - HELIPORT - Reg)	Lat: 46.199	Long: -61.291	28.709KM	15.502NM	SW
CAPE GEORGE (CCG6 - WATERDROME - Reg)	Lat: 45.73	Long: -60.811	69.448KM	37.499NM	S

## NOVA SCOTIA

## AERODROME / FACILITY DIRECTORY

**BADDECK (GUNEDEN) NS****CDW2**

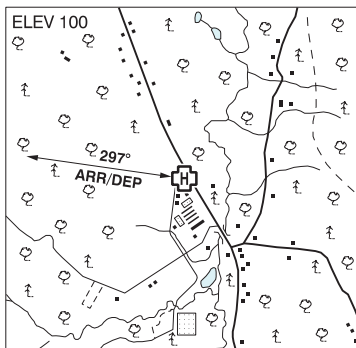
<b>REF</b>	N46 09 51 W60 47 03 3.1N 18°W (2015) UTC-4(3) Elev 291' A5003 A5012	
<b>OPR</b>	Guneden Place Ltd. 902-295-8558 Reg PPR	
<b>PF</b>	B-1,2,5 C-3,4,6	
<b>FLT PLN</b>	<b>FIC</b> London 866-WXBRIEF (Toll free within Canada) or 866-541-4104 (Toll free within Canada & USA) <b>ACC</b> (IFR only) Moncton 506-867-7177 or 866-480-8200.	
<b>SERVICES</b>	<b>FUEL</b> 100LL <b>S</b> 4,5	
<b>RWY DATA</b>	Rwy 03(035°)/21(215°) 3000x60 GRVL	
<b>RCR</b>	Opr Ltd win maint, ctc opr	
<b>COMM</b>		
<b>ATF</b>	UNICOM ltd hrs O/T tfc 122.8 5NM 3300 ASL	
<b>PRO</b>	Rgt hand circuits Rwy 03 (CAR 602.96).	
<b>CAUTION</b>	Abrupt drop off thld Rwy 21, turbulence may be anticipated on apch to Rwy 21 under certain wind conds, be alert for seaplane activity in Baddeck Harbour 4.5NM SSE.	

## NOVA SCOTIA

## AERODROME / FACILITY DIRECTORY

**INVERNESS (CONSOLIDATED MEM HOSP) NS (Heli)****CNV2**

<b>REF</b>	N46 11 58 W61 17 29 2S 19°W (2014) UTC-4(3) Elev 100' A5003
<b>OPR</b>	Cape Breton District Health Authority 902-258-2100 Reg PPR
<b>FLT PLN</b>	
<b>FIC</b>	London 866-WXBRIEF (Toll free within Canada) or 866-541-4104 (Toll free within Canada & USA)
<b>ACC</b>	(IFR only) Moncton 506-867-7177 or 866-480-8200.
<b>HELI DATA</b>	79' x 79' ASPH 108' x 108'
<b>LIGHTING</b>	FH
<b>COMM</b>	
<b>ATF</b>	tfc 123.2 5NM 3100 ASL
<b>PRO</b>	Arr/dep path 297° fr heli.
<b>CAUTION</b>	Unlgt'd p-line along roadway east of pad.



# CANADA WATER AERODROME SUPPLEMENT

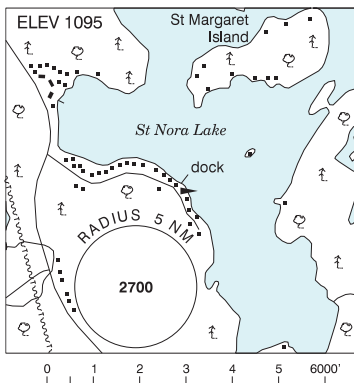
Effective 0901Z 19 March 2026 to 0901Z 18 February 2027

## B224 AERODROME/FACILITY DIRECTORY

### ST. NORA LAKE / COMAK LANDING ON

CNL7

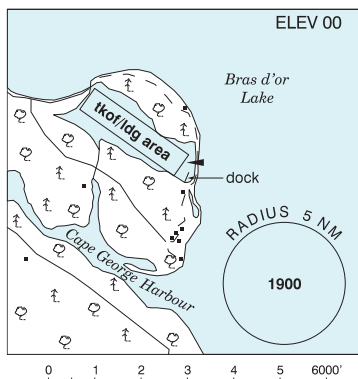
<b>REF</b>	N45 09 13 W78 50 02 6SSE Dorset 11°W (2024) UTC-5(4) Elev 1095' A5000
<b>OPR</b>	Brian Bissell 519-918-0044 Reg PPR
<b>FLT PLN</b>	<b>FIG</b> London 866-WXBRIEF (Toll free within Canada) or 866-541-4104 (Toll free within Canada & USA)
<b>A/D DATA</b>	Open water May 1-Oct 30.
<b>DOCKS</b>	Floating dock 10'x20
<b>COMM</b>	<b>ATF</b> tfc 123.2 5NM 4100 ASL
<b>CAUTION</b>	Hi Terrain. Boat tfc.



### ST. PETER'S / CAPE GEORGE NS

CCG6

<b>REF</b>	N45 43 50 W60 48 38 5.2NE 18°W (2017) UTC-4(3) Elev 00' A5003
<b>OPR</b>	Michael Schinzig 902-535-2627 or 902-577-9304 Reg
<b>PF</b>	B-1 C-2,4,5
<b>FLT PLN</b>	<b>FIG</b> London 866-WXBRIEF (Toll free within Canada) or 866-541-4104 (Toll free within Canada & USA) <b>ACC</b> (IFR only) Moncton 506-867-7177 or 866-480-8200
<b>SERVICES</b>	<b>S</b> 7
<b>A/D DATA</b>	Open water Apr-Nov. Gravel/sand bottom. Dock & ramp.
<b>COMM</b>	<b>ATF</b> tfc 123.2 5NM 3000 ASL



# CANADA WATER AERODROME SUPPLEMENT

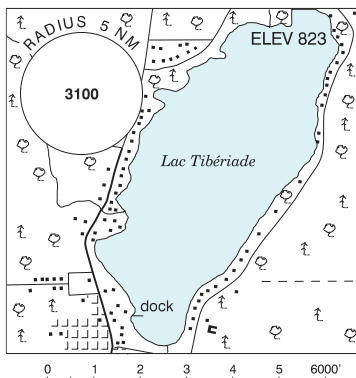
Effective 0901Z 19 March 2026 to 0901Z 18 February 2027

AERODROME/FACILITY DIRECTORY B225

## STE-VÉRONIQUE QC

CSW9

<b>REF</b>	N46 30 56 W74 59 19 Adj NNE 15°W UTC-5(4) Elev 823' A5002
<b>OPR</b>	Air Mt-Laurier 1985 819-275-2794 Reg PPR
<b>PF</b>	B-1,2,3,5 C-6 D-4
<b>FLT PLN</b>	(bil) <b>FIG</b> Québec 866-GOMÉTÉO or 866-WXBRIEF (Toll free within Canada) or 866-541-4105 (Toll free within Canada & USA)
<b>SERVICES</b>	<b>FUEL</b> 100LL <b>OIL</b> 80, 100 <b>S</b> 1,2,5
<b>A/D DATA</b>	Open water May-mid Nov. Sandy beach.
<b>COMM</b>	<b>ATF</b> tfc 123.2 5NM 3900 ASL <b>A/G</b> 122.9 5460 SSB (Co)
<b>PRO</b>	Avoid overflight of village & beach below 1000 AGL.
<b>CAUTION</b>	P-lines 0.5NM N.



## ST. WALERAN ISLAND ON — See PARRY SOUND / ST. WALERAN ISLAND

## SAGUENAY (HARVEY) QC

CSA8

<b>REF</b>	N48 26 23 W71 07 46 2.5NM WNW 17°W (2014) UTC-5(4) Elev 30' A5010
<b>OPR</b>	10289221 Canada Inc. 514-797-6725 Reg PPR
<b>PF</b>	C-1,2,3,4,5,6
<b>FLT PLN</b>	(bil) <b>FIG</b> Québec 866-GOMÉTÉO or 866-WXBRIEF (Toll free within Canada) or 866-541-4105 (Toll free within Canada & USA)
<b>SERVICES</b>	<b>S</b> 5,7
<b>A/D DATA</b>	Open water May-Nov. Dock depth 3' during low tide. Tidal range 12', current 3 kt. Rocks and shoal unmarked at low tide along the shore.
<b>COMM</b>	<b>TWR</b> Bagotville 126.2 <b>VFR ADV</b> Bagotville Tml 121.2 <b>A/G</b> 122.925

