

---

# FLIGHT PLAN & SITE SURVEY

---

H 64-3955 VANCOUVER GAS MODEL CLUB- RICE MILL  
ROAD

May 22, 2026



## IMPORTANT NOTICE

Please ensure you have received all required authorizations prior to flight. This Site Survey was created using RPAS Wilco. The user accepts all responsibility for the accuracy of the information.

Terms & Conditions: [rpaswilco.com/#tnc](https://rpaswilco.com/#tnc)

# Mission Information

H 64-3955 VANCOUVER GAS MODEL CLUB- RICE MILL ROAD

## FLIGHT DETAILS

Reference No:	<b>MAAC-64-3955</b>
Project Name:	<b>VANCOUVER GAS MODEL CLUB</b>
Pilot Name:	<b>MAAC</b>
Pilot Certificate:	
Mission Type:	<b>VLOS</b>
Flight Start:	<b>May 22, 2026 07:26 PM</b>
Flight End:	<b>May 22, 2026 08:26 PM</b>

## LOCATION DETAILS

Flight Address:	<b>RICE MILL ROAD</b>
Latitude:	<b>49° 7' 35.00" N ( 49.126 )</b>
Longitude:	<b>123° 5' 2.00" W ( -123.084 )</b>
Field Elevation:	<b>7 ft MSL</b>
Altitude / Radius:	<b>400 ft / 926 m ( 0.5 nm )</b>
Classification:	<b>UNCONTROLLED</b>
FIR / Contact:	<b>CZVR / 604-586-4500</b>

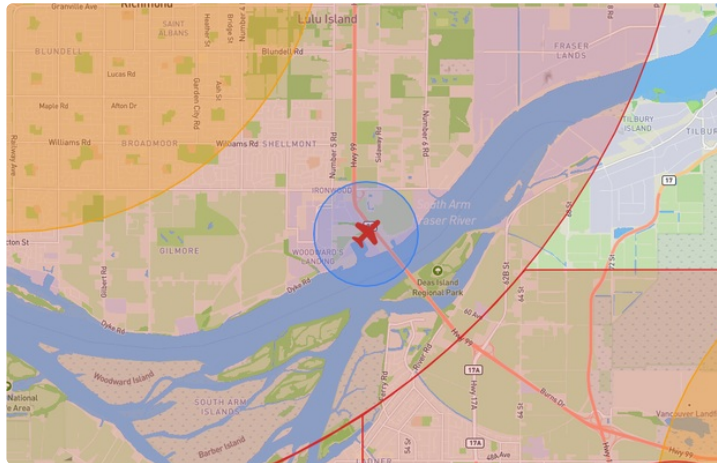
## REPORT CONTENTS

Site Survey • Obstacles (if available) • Nearby Aerodromes • Canadian Aviation Regulations • GFA • Aerodrome Supplements • METAR & TAF • NOTAMs • CFS




# Flight Map & MODEL Details

MISSION LOCATION SURVEY

## FLIGHT AREA MAP



## MISSION LOCATION DETAILS

ROLE	LATITUDE	LONGITUDE
 MODEL	49° 7' 35.00" N 49.126	123° 5' 2.00" W -123.084
 Pilot		
 Payload Op.		
 Observer		

# Airspace Classification

MISSION LOCATION SURVEY

## AIRSPACE MAP



## OVERLYING AIRSPACES

Class	Name	Floor	Ceiling
C	Vancouver, BC l) [TCA]	4500MSL	6500MSL
C	Vancouver, BC s) [TCA]	6500MSL	8500MSL
C	Vancouver, BC t) [TCA]	8500MSL	9500MSL
C	Vancouver, BC u) [TCA]	9500MSL	12500MSL
B	Vancouver, BC v) [TCA]	12500MSL	18000MSL
C	Boundary Bay, BC b) [CZ]	1000MSL	2500MSL
E	Pitt Meadows, BC a) [CAE]	1500MSL	18000MSL
C	Vancouver, BC d) [TCA]	2500MSL	4500MSL
E	V342-1 VHF/UHF Airway	2200AGL	18000MSL
E	T800 Fixed RNAV Route	2200AGL	18000MSL
E	V304 VHF/UHF Airway	2200AGL	18000MSL
E	T775 Fixed RNAV Route	2200AGL	18000MSL
E	Pitt Meadows, BC b) [CAE]	2000MSL	18000MSL
C	Vancouver, BC c) [TCA]	1200MSL	2500MSL
F	CYR 6.1.0-11 SURREY PRE-TRIAL SERVICES CENTRE, BC	SFC	1300MSL
E	V347 VHF/UHF Airway	2200AGL	18000MSL
C	Boundary Bay, BC a) [CZ]	SFC	1000MSL
C	Vancouver, BC [CZ]	SFC	2500MSL
E	V317-2 VHF/UHF Airway	2200AGL	18000MSL
E	V330 VHF/UHF Airway	2200AGL	18000MSL
E	T701-1 Fixed RNAV Route	2200AGL	18000MSL
C	Vancouver Outer Control Zone, BC [CZ]	800MSL	2500MSL
D	Vancouver Outer Control Zone, BC [CZ]	SFC	800MSL
E	T618 Fixed RNAV Route	2200AGL	18000MSL
E	V338 VHF/UHF Airway	2200AGL	18000MSL
C	Vancouver, BC q) [TCA]	3200MSL	6500MSL
C	Vancouver Harbour, BC [CZ]	SFC	2500MSL

**NEAREST AERODROMES & DISTANCE FROM OPERATION**

VANCOUVER INTL (CAM9 - WATERDROME - Reg)	Lat: 49.177	Long: -123.171	8.446KM	4.56NM	NW
BOUNDARY BAY (CZBB - AERODROME/HELIPORT - Cert)	Lat: 49.073	Long: -123.008	8.066KM	4.355NM	SE
DELTA HERITAGE AIR PARK (CAK3 - AERODROME - Reg)	Lat: 49.079	Long: -122.938	11.872KM	6.41NM	SE

# CANADA WATER AERODROME SUPPLEMENT

Effective 0901Z 19 March 2026 to 0901Z 18 February 2027

AERODROME/FACILITY DIRECTORY B277

## VANCOUVER INTL BC

CAM9

<b>REF</b>	N49 10 37 W123 10 15 Adj SW 17°E (2013) UTC-8(7) Elev 00' VTA A5004 T1	
<b>OPR</b>	Vancouver Intl Aprt Authority 604-207-7022; Seair Seaplanes 604-273-8900 or 1-800-447-3247 Reg	
<b>PF</b>	B-1,2,3,6 C-4,5	
<b>CUST</b>	AOE/15/SEAPL 888-226-7277 Daylight hrs only; exc hols	
<b>FLT PLN</b>	<p><b>FIG</b> Kamloops 866-WXBRIEF (Toll free within Canada) or 866-541-4101 (Toll free within Canada &amp; USA)</p> <p><b>ACC</b> IFR 604-586-4590/4591or 800-668-1333; IFR tng flts PPR ctc 604-586-4592 (collect calls accepted)</p>	
<b>SERVICES</b>	Fuel & beaching 604-273-8900 or 129.30 daylight hrs. 100LL, JA 3,4,5	
<b>A/D DATA</b>	Fraser River 066°-246°. Middle Arm 099°-279°. Tidal range 14', shallow water close to shores. Docks, ramp. Open water all year.	
<b>COMM</b>	<p><b>RCO</b> Pacific rdo 123.15 (FISE)</p> <p><b>ATIS</b> 124.6 restrictions are bcst on ATIS</p> <p><b>CLNC DEL</b> 121.4 All dep acft ctc clnc del</p> <p><b>TWR</b> 118.7 (South) 119.55 (North) VFR 124.02 125.65 226.5 236.6 (E) (emerg 604-775-9531)</p> <p><b>TML</b> 125.2</p>	
<b>NAV</b>	<b>VOR/DME</b> YVR 115.9 Ch 106 N49 04 38 W123 08 57 (37')	

# CANADA WATER AERODROME SUPPLEMENT

Effective 0901Z 19 March 2026 to 0901Z 18 February 2027

## B278 AERODROME/FACILITY DIRECTORY

### VANCOUVER INTL BC (Cont'd)

CAM9

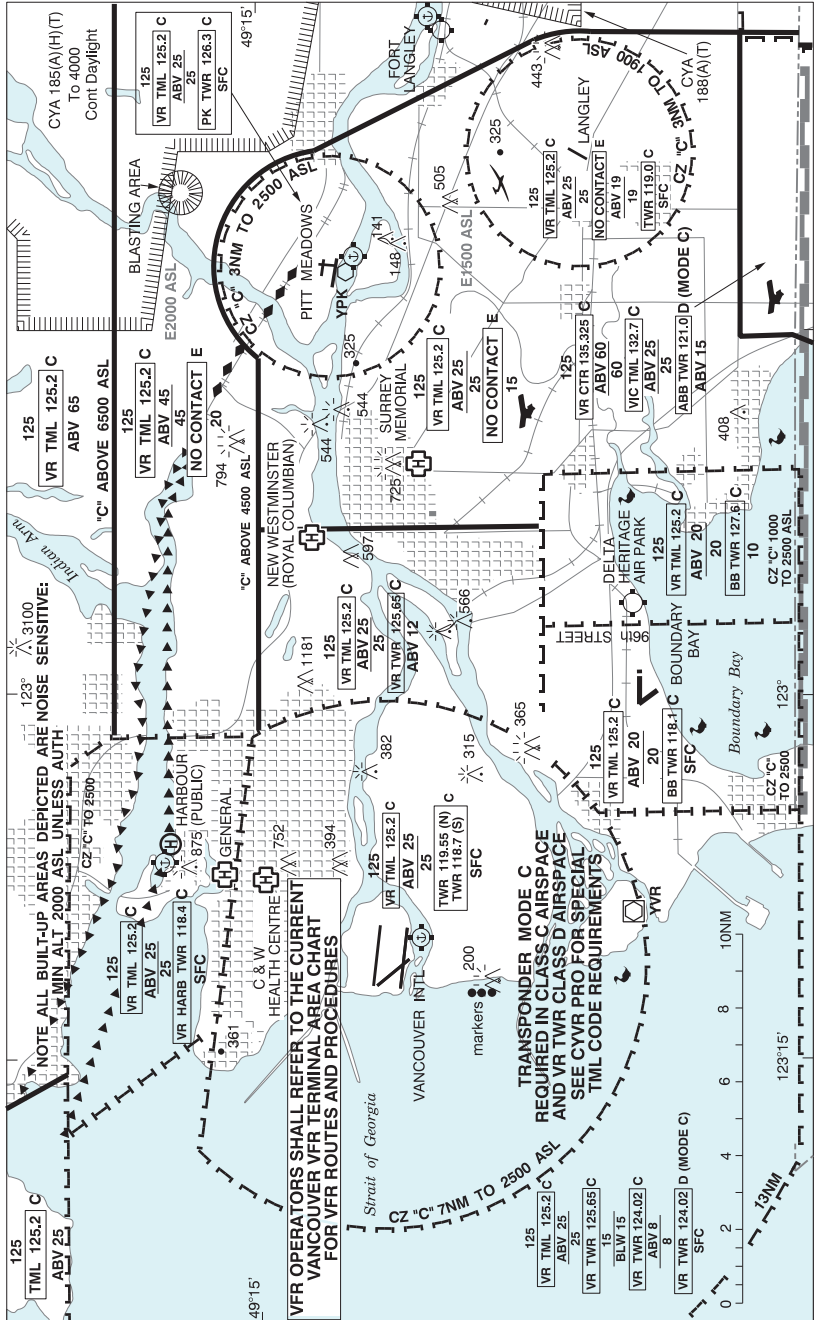
<b>PRO</b>	<p><b>AIRSPACE:</b> See VTA chart for VFR rtes &amp; pro. Procedures for crossing the southern Strait of Georgia within Tml Class C airspace refer to VTPC. Transponder mode C rqr'd in class C airspace and CZ. CARS Part VII operators must ensure routes flown at night meet minimum altitude requirements for commercial operations.</p> <p><b>ARR/DEP:</b> See Vancouver Intl CAM9 VTPC. Downwind fit alt not below 500' ASL over populated area to the S. Dep rstd til 0630 hr lcl O/T PPR from YVR Ops 604-207-7022.</p> <p><b>NOISE ABATEMENT:</b> Consistent with safe acft ops, the following are recommended operational proc: 1. Tkof Westbound and ldg Eastbound are preferred when wind and water conds permit. 2. Use low RPM reduced noise tkof when able. 3. Avoid dep rte that fly over the City of Richmond, whenever possible. 4. Avoid using "reverse thrust" after ldg to slow the acft. 5. Maintain 500 ASL when flying the Westminster Hwy downwind rte.</p> <p><b>ATS REQUIREMENTS:</b> - All VFR acft arriving, departing or transiting the Vancouver or Victoria Tower Class C or D airspace require a transponder code. - All acft departing Vancouver or Victoria Intl (including Water Aerodrome) call Kamloops FIC at 866-992-7433 (866-WXBRIEF) or 866-541-4101 for code assignment at least 30 min prior to flight or file a VFR Flight Plan/Flight Itinerary. - All acft arriving Vancouver, Victoria Intl (including Water Aerodrome) or transiting Vancouver or Victoria Control Zones obtain a code from one of the following ATS units: Vancouver Harbour, Nanaimo, Victoria Harbour, Boundary Bay, Langley, Abbotsford or Pitt Meadows, Pacific Radio 123.15, or call Kamloops FIC at 866-992-7433 (866-WXBRIEF) or 866-541-4101.</p>
<b>CAUTION</b>	Low lvl overflights of heli arr/dep adj land A/D. Rough water associated with strong E or W winds (1-3' swells). Debris in river. Twr cranes S side of Fraser River adj Olympic Oval.

### VANDERHOOF WATER BC

CVH3

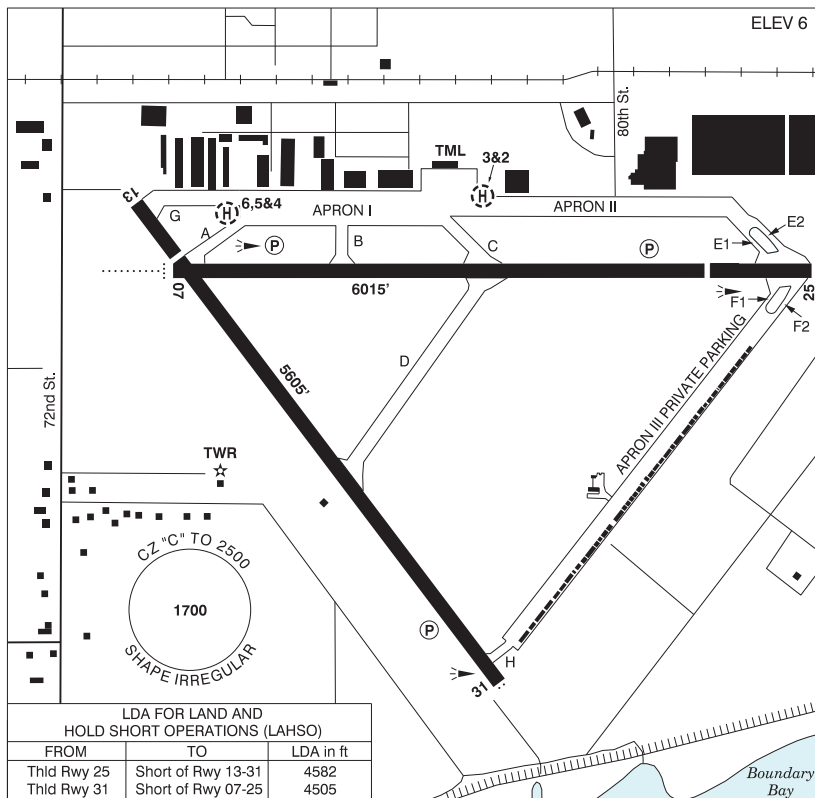
<b>REF</b>	N54 01 13 W123 59 53 Adj NE 17°E° (2019) UTC-8(7) Elev 2050' aprx A5014	
<b>OPR</b>	Vanderhoof Flying Club 250-567-4805/8724 or 250-614-3569 Reg	
<b>PF</b>	C-1,2,3,4,5 D-6	
<b>FLT PLN</b>	<b>FIC</b> Kamloops 866-WXBRIEF (Toll free within Canada) or 866-541-4101 (Toll free within Canada & USA)	
<b>SERVICES</b>	<b>FUEL</b> 100LL (at land A/D), MG-1, MG-4 not avbl on site. <b>PVT ADV</b> Guardian Aerospace 250-567-2655 15-24Z± O/T 250-570-2670/2671 PN for float planes.	
<b>A/D DATA</b>	Open water May 1 to Oct 30. Mud & gravel bottom. <b>DOCKS</b> 3 docks on private land. Dock space not assured.	

VANCOUVER VFR TERMINAL PROCEDURES CHART



VANCOUVER / BOUNDARY BAY BC

CZBB



<b>REF</b>	N49 04 24 W123 00 30 8.5SSE 17°E (2011) UTC-8(7) Elev 6' VTA A5004 LO2 HI3 T1 CAP
<b>OPR</b>	Alpha Aviation Inc. 604-946-5361 Cert PPR (see PRO)
<b>PF</b>	A-1,2,3,6 C-4,5
<b>CUST</b>	AOE/15 888-226-7277 15-06Z‡
<b>FLT PLN</b>	
<b>FIC</b>	Kamloops 866-WXBRIEF (Toll free within Canada) or 866-541-4101 (Toll free within Canada & USA)
<b>ACC</b>	Vancouver IFR 604-586-4590/4591; IFR tng flts PPR ctc 604-586-4592
<b>WX</b>	LWIS H24 LAWO 15-07Z‡
<b>SERVICES</b>	
<b>FUEL</b>	100LL (truck or H24 cardlock), JA-1
<b>OIL</b>	All
<b>S</b>	1,2,3,4,5,6
<b>PVT ADV</b>	Boundary Bay Air Services 122.95 or 866-946-2922 15-02Z‡ O/T call out chg

## BRITISH COLUMBIA

## AERODROME / FACILITY DIRECTORY

## VANCOUVER / BOUNDARY BAY BC (Cont'd)

CZBB

<b>RWY DATA</b>	Rwy 07(073°)/25(253°) 6015x100 ASPH Thld 25 displ 1006' Rwy 13(126°)/31(306°) 5605x100 ASPH Thld 13 displ 656'
<b>RWY CERT</b>	Rwy 07/25 AGN IIIB Rwy 13/31 AGN IIIB
<b>TWY CERT</b>	Twy B AGN II
<b>TWY</b>	Twy E1, E2, F1, F2: Simultaneous use of E1 and E2 taxiways restricted to a wing-span of 32 m (105 ft). Discretionary oversteer required for intersections of Twy E1, E2, F1, F2. Outer main gear wheel span 6m (20 ft) up to but not including 9m (30 ft).
<b>APRON</b>	Apron 3 pvt prkg only. No itinerant acft.
<b>RCR</b>	Opr CRFI/RSC avbl 15-04Z‡ No win maint btwn 04-15Z‡
<b>HELI DATA</b>	Parking Pads 2 & 3: 68' dia CONC Max heli overall length 57' Parking Pads 4 & 6: 60' dia CONC Max heli overall length 50' Parking Pad 5: 65' dia CONC Max heli overall length 54' Parking Pads 2 & 3 day use tkof/lgd, hover, taxi & prkg. Ngt use prkg only (CAR 602.96).
<b>LIGHTING</b>	07-AD (non-std 1400') (TE ME) P2, 25-(TE ME) P2 3.5°, 13-(TE ME), 31-AS(TE ME) P2 When TWR clsd ARCAL-118.1 type K.
<b>COMM</b>	
<b>ATIS</b>	125.5 15-07Z‡
<b>GND</b>	124.3 15-07Z‡
<b>TWR</b>	118.1 (inner) 127.6 (outer) (V) to 2000 ASL 15-07Z‡ (emerg only 604-946-0911) Vancouver TML 125.2 abv 2000 ASL
<b>MF</b>	tfc 118.1 to 2000 ASL 07-15Z‡ Vancouver TML 125.2 abv 2000 ASL. CZ shape irregular to 2500 ASL. (CAR 602.98) Excluding that portion which penetrates Delta Heritage Air Park ATF dur daylight hrs.
<b>NAV</b>	
<b>VOR/DME</b>	VANCOUVER YVR 115.9 Ch 106 N49 04 38 W123 08 57 (37')
<b>PRO</b>	VFR acft with transponder squawk code assigned by ATC. All circuits 800 AGL. Rgt hand circuits Rwy 25 & 31 (CAR 602.96). Rwy 13/31 preferred for ngt ops. Pilots to open/close Flt Plns with Kamloops FIC via phone or Kamloops FIC 123.15 when practicable. Procedures for crossing the southern Strait of Georgia within Tml Class C airspace refer to Vancouver Intl VTPC.  No circuits Rwy 07/25 23-07 lcl. Avoid over-flying noise sensitive area unless unable due to crosswind limitations or other safety considerations or as directed by ATC. Arr/Dep: No turns BLW 400'. After dep Rwy 25 turn crosswind as rrd to remain E of railway tracks. Arr Rwy 07 turn base E of noise sensitive area. No departures fr taxi B. Conform to published VTA routes and as directed by ATC.  PPR for Jet acft and acft over 12500 lbs GTOW. Ctc OPR for advsy info.
<b>PRO (Cont'd)</b>	<b>ATS REQUIREMENTS:</b> All VFR acft arriving, departing or transiting the Vancouver or Victoria Tower Class C or D airspace require a transponder code. - All acft departing Vancouver or Victoria Intl (including Water Aerodrome) call Kamloops FIC at 866-541-4101 or PAC RDO 123.15 or 122.375 for code assignment at least 30 min prior to flight or file a VFR Flight Plan/Flight Itinerary. - All acft arriving Vancouver, Victoria Intl (including Water Aerodrome) or transiting Vancouver or Victoria Control Zones obtain a code from one of the following ATS units: Vancouver Harbour, Nanaimo, Victoria Harbour, Boundary Bay, Langley, Abbotsford or Pitt Meadows, or call Kamloops FIC at 866-541-4101 or PAC RDO 123.15 or 122.375. - All acft arriving Victoria Intl from a non NAV CANADA site call Kamloops FIC at 866-541-4101 or PAC RDO 123.15 or 122.375 for code assignment at least 30 minutes prior to flight or file a VFR Flight Plan/ Flight Itinerary.

## VANCOUVER / BOUNDARY BAY BC (Cont'd)

CZBB

**Delta Heritage Air Park 2.5NM E no overflights below 1000 ASL.** (See VTPC).

All arriving and transiting A/C Contact TWR 127.6 on initial contact.  
All Departures contact TWR 127.6 climbing through 800 ASL unless otherwise instructed.

Rwy 07 or 13:

Arrivals fr E - report COURTHOUSE not below 1500 expect COURTHOUSE ARRIVAL left downwind Rwy 07 or left base Rwy 13.  
Arrivals fr S or W - report WEST POINT expect WEST POINT ARRIVAL rgt base Rwy 07 or rgt downwind Rwy 13.  
Departures to E - expect AUTOMALL DEPARTURE.  
Departures to W or S - expect POINT ROBERTS DEPARTURE.

Rwy 25 or 31:

Arrivals fr E - report AUTOMALL expect AUTOMALL ARRIVAL straight in Rwy 25 or rgt base Rwy 31.  
Arrivals fr S - report POINT ROBERTS expect POINT ROBERTS ARRIVAL left downwind to Rwy 25 or Left base Rwy 31.  
Departures to E - expect COURTHOUSE DEPARTURE or FRASER BRIDGE DEPARTURE.  
Departures to the W or S - expect WEST POINT DEPARTURE.

**HELI**

All heli ctc gnd for departure instructions.  
GAS STATION DEPARTURE Track eastbound over Hwy 99. Not above 500 ASL til GAS STATION. Transmit intentions to Delta Air Park tfc on 123.3 prior to GAS STATION if BLW 1000 ASL. Ctc ZBB TWR on 127.6 after passing AK3 if climbing to 1000 ASL or abv.  
LANDFILL ARRIVAL Report approaching HWY 91 track 1 NM North of Hwy 99 to LANDFILL. Transmit intentions to Delta Air Park tfc on 123.3 prior to crossing Hwy 91. Overfly LANDFILL 500 ASL or below. Cross Hwy 99 abm LANDFILL to apron.

ARR/DEP N or NW will be routed via LANDFILL. Cross LANDFILL 500 ASL or BLW. Heli in excess of 58' overall length PPR.

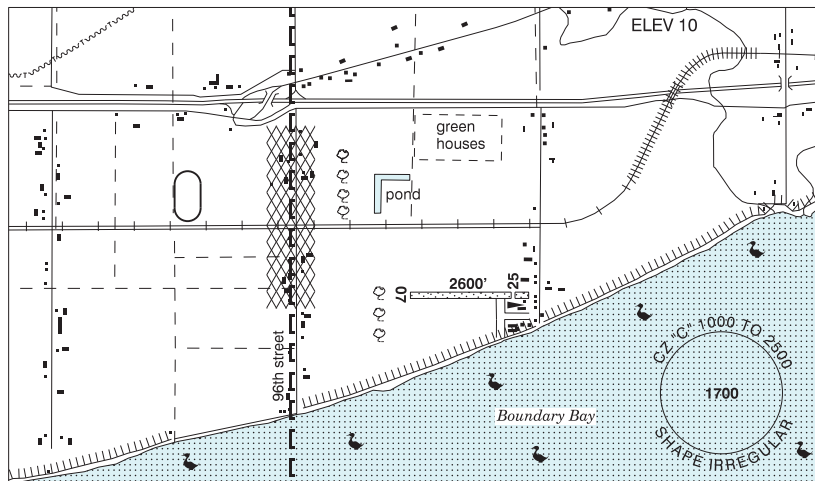
Heli ops prohibited within 30' vertical & 90' horizontal fr all refueling eqpt.

**CAUTION**

Extensive bird activity. High density tfc area E of CZ. Extensive flt tng ops.

**DELTA / DELTA HERITAGE AIR PARK BC**

**CAK3**



<b>REF</b>	N49 04 43 W122 56 17 4.5E 17°E (2013) UTC-8(7) Elev 10' VTA A5004
<b>OPR</b>	Recreational Aircraft Association, Chap 85 (DapCom) 604-543-8894, Caretaker 604-722-3791 Reg PPR by phone 604-878-9050
<b>PF</b>	B-1 C-2,3,6 D-4,5
<b>FLT PLN</b>	<b>FIC</b> Kamloops 866-WXBRIEF (Toll free within Canada) or 866-541-4101 (Toll free within Canada & USA)
<b>SERVICES</b>	<b>FUEL</b> 100LL <b>S</b> 4,5
<b>RWY DATA</b>	Rwy 07/25 2600x75 GRASS Thld 25 displ 300'
<b>RCR</b>	Opr No win maint. Rwy soft when wet
<b>COMM</b>	<b>ATIS</b> Boundary Bay 125.5 15-07Z† <b>ATF</b> tfc 123.3 2NM below 1000 ASL Excluding that portion which penetrates Boundary Bay class "C" airspace.

## DELTA / DELTA HERITAGE AIR PARK BC (Cont'd)

CAK3

## PRO

HELI  
NOISE

Heli tng not auth.

Circuit alt 600 ASL. Rgt hand circuits Rwy 25 (CAR 602.96).

## NOISE ABATEMENT PROCEDURES:

Departures:

Rwy 25 Dep: When safe hdg 280°, then further right turn to crosswind to avoid noise sensitive area.

Downwind dep auth fr Rwy 25 at 600 ASL. No southbound dep until clear of circuit to E. Avoid flt over dike and adj water area below 600 ASL.

Arrivals:

All arr to air park fr seaside. Cross midfield at 600 ASL and join downwind (CAR 602.96).

Rwy 07 Arr: Fr downwind, turn on base leg well bfr 96th Street to avoid noise-sensitive area. When S of railway tracks hdg 100° to intercept final apch E of row of trees.

Boundary Bay A/D 2.5NM W, obtain clnc prior to entering Boundary Bay CZ. Refer to VTPC. Procedures for crossing the Southern Strait of Georgia within Tml Class C airspace refer to Vancouver Intl VTPC FOR CROSSING THE SOUTHERN STRAIT OF GEORGIA ABOVE 2500FT.

## CAUTION

Extremely confined circuit. Trees 750' fr thld Rwy 07, trees and obst adj to thld Rwy 25. Acft unable to accommodate noise abatement procedures and obst avoidance should avoid the air park. Beware of Boundary Bay A/D tfc close to Delta Heritage Air Park.