

---

# FLIGHT PLAN & SITE SURVEY

---

D 69-3960 WINNIPEG RADIO CONTROL CLUB- WRCC MAIN  
FIELD WHEELS

May 22, 2026



## IMPORTANT NOTICE

Please ensure you have received all required authorizations prior to flight. This Site Survey was created using RPAS Wilco. The user accepts all responsibility for the accuracy of the information.

Terms & Conditions: [rpaswilco.com/#tnc](https://rpaswilco.com/#tnc)

# Mission Information

D 69-3960 WINNIPEG RADIO CONTROL CLUB- WRCC MAIN FIELD WHEELS

## FLIGHT DETAILS

Reference No:	<b>MAAC-69-3960</b>
Project Name:	<b>WINNIPEG RADIO CONTROL CLUB</b>
Pilot Name:	<b>MAAC</b>
Pilot Certificate:	
Mission Type:	<b>VLOS</b>
Flight Start:	<b>May 22, 2026 09:26 PM</b>
Flight End:	<b>May 22, 2026 10:26 PM</b>

## LOCATION DETAILS

Flight Address:	<b>WRCC MAIN FIELD WHEELS</b>
Latitude:	<b>49° 47' 40.23" N ( 49.795 )</b>
Longitude:	<b>97° 5' 38.64" W ( -97.094 )</b>
Field Elevation:	<b>758 ft MSL</b>
Altitude / Radius:	<b>400 ft / 926 m ( 0.5 nm )</b>
Classification:	<b>UNCONTROLLED</b>
FIR / Contact:	<b>CZWG / 204-983-8338</b>

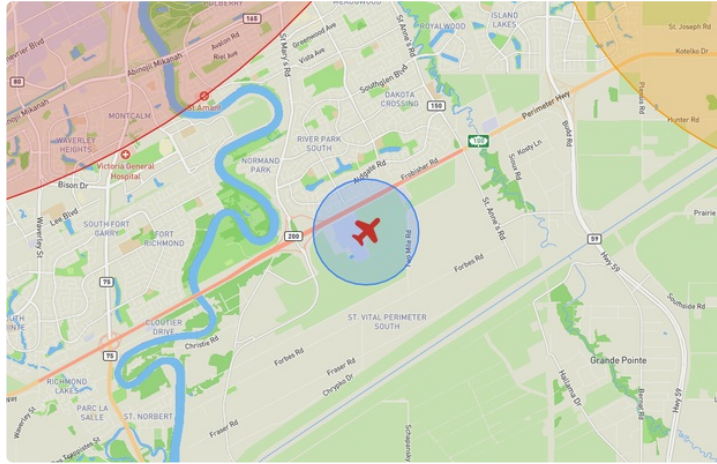
## REPORT CONTENTS

Site Survey • Obstacles (if available) • Nearby Aerodromes • Canadian Aviation Regulations • GFA • Aerodrome Supplements • METAR & TAF • NOTAMs • CFS





# Flight Map & MODEL Details

MISSION LOCATION SURVEY

## FLIGHT AREA MAP



## MISSION LOCATION DETAILS

ROLE	LATITUDE	LONGITUDE
 MODEL	49° 47' 40.23" N 49.795	97° 5' 38.64" W -97.094
 Pilot		
 Payload Op.		
 Observer		

# Airspace Classification

MISSION LOCATION SURVEY

## AIRSPACE MAP



## OVERLYING AIRSPACES

Class	Name	Floor	Ceiling
E	Winnipeg, MB a) [CAE]	6500AGL	18000MSL
B	Winnipeg, MB a) [TCA]	12500MSL	18000MSL
C	Winnipeg, MB c) [TCA]	3000AGL	18000MSL
C	Winnipeg, MB d) [TCA]	4000MSL	12500MSL
E	T702 Fixed RNAV Route	2200AGL	18000MSL
E	T706 Fixed RNAV Route	2200AGL	18000MSL
E	T810 Fixed RNAV Route	2200AGL	18000MSL
E	Winnipeg, MB b) [CAE]	7000AGL	18000MSL
E	T407 Fixed RNAV Route	2200AGL	18000MSL
E	Winnipeg, MB [TA]	700AGL	18000MSL
C	Winnipeg, MB b) [TCA]	2000AGL	18000MSL
C	3.3.4-4 [CZ]	SFC	3000MSL
E	T776 Fixed RNAV Route	2200AGL	18000MSL
E	T798 Fixed RNAV Route	2200AGL	18000MSL
D	St. Andrews, MB [CZ]	SFC	3000MSL

## NEAREST AERODROMES & DISTANCE FROM OPERATION

LYNCREST (CJL5 - AERODROME - Reg)	Lat: 49.852	Long: -96.974	10.782KM	5.822NM	NE
WINNIPEG (CITY OF WINNIPEG) (CWG2 - HELIPORT - Cert)	Lat: 49.9	Long: -97.096	11.731KM	6.334NM	N
JAMES ARMSTRONG RICHARDSON INTL (CYWG - AERODROME - DND)	Lat: 49.91	Long: -97.24	16.528KM	8.924NM	NW

## MANITOBA

## AERODROME / FACILITY DIRECTORY

## WINNIPEG / LYNCREST MB

CJL5

<b>REF</b>	N49 51 09 W96 58 25 2.8E 3°E (2015) UTC-6(5) Elev 775' VTA A5007	
<b>OPR</b>	Springfield Flying Club 204-222-0079 Reg	
<b>PF</b>	B-1 C-2,3,4,5,6	
<b>FLT PLN</b>	Pilots to open/close VFR flt plan with Edmonton rdo, FISE or by phone.	
<b>FIC</b>	Edmonton 866-WXBRIEF (Toll free within Canada) or 866-541-4102 (Toll free within Canada & USA) (file 30 min prior ETD, see PRO)	
<b>ACC</b>	IFR, 204-983-8337 or 888-834-3344 or flt pln by Fax at 204-983-2823 & include phone numbers where pilot can be reached prior to dep.	
<b>SERVICES</b>		
<b>FUEL</b>	100LL	
<b>RWY DATA</b>	Rwy 09(093°)/27(273°) 3000x120 GRASS Rwy 17(170°)/35(350°) 2500x200 GRASS	
<b>RCR</b>	Ctc opr Ltd win maint. Win rwy width 90' marked with cones.	
<b>COMM</b>		
<b>ATF</b>	tfc 123.2 3NM to below 3000 ASL excluding airspace within Winnipeg TCA	
<b>PRO</b>	Circuit hgt 1300 ASL. Mode C Transponder Mandatory - Acft operating in Winnipeg Class C CZ or TCA require a discrete transponder code which must be obtained by filing a flt plan, flt itinerary or by ctc Winnipeg ACC 204-984-5979 at least 15 min prior to entering. PPR for block airwork, photo flt or tng flt oprg in Winnipeg TCA ctc Winnipeg ACC 204-984-5979 or fax 204-983-2823.	
<b>NOISE</b>	Noise abatement pro: avoid flying over houses. Dep path Rwy 17 if cond permit.	
<b>CAUTION</b>	Apch path Rwy 17 over railway tracks. Apch path Rwy 09 over road. P-lines all quad, see VTA. Ultra-light activity in the circuit. Migratory bird activity in vic of A/D. Avoid flying over water retention ponds E of aprt dep Rwy 09, ldg Rwy 27 if cond permit.	

## MANITOBA

## AERODROME / FACILITY DIRECTORY

## WINNIPEG (CITY OF WINNIPEG) MB (Heli)

CWG2

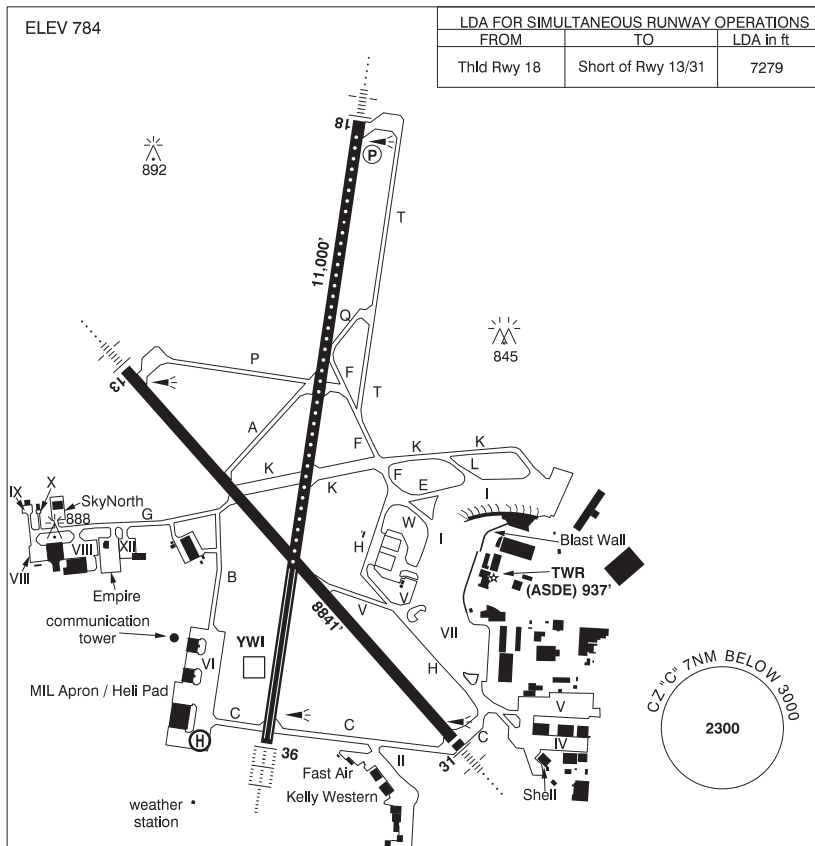
<b>REF</b>	N49 54 01 W97 05 44 4°E UTC-6(5) Elev 767' VTA A5007	
<b>OPR</b>	City of Winnipeg 204-986-4869 204-470-7800 Cert PPR Heli clsd Oct 2-Mar 31	
<b>PF</b>	B-1 C-2,3 D-4,5,6	
<b>FLT PLN</b>	Pilots to open/close VFR flt plan with Edmonton rdo, FISE or by phone.	
<b>FIC</b>	Edmonton 866-WXBRIEF (Toll free within Canada) or 866-541-4102 (Toll free within Canada & USA)	
<b>HELI DATA</b>	FATO 66' dia CONC Safety Area 87' dia Parking Pad 1 & 2: 52' dia CONC/GRASS	
<b>RCR</b>	Opr	
<b>COMM</b>		
<b>TWR</b>	Winnipeg 118.3	
<b>PRO</b>	Arr/dep 090° to 270° fr heli, slope 8% (H3) (CAR 602.96). Mode C Transponder Mandatory - Acft operating in Winnipeg Class C CZ or TCA require a discrete transponder code which must be obtained by filing a flt plan, flt itinerary or by ctc Winnipeg ACC 204-984-5979 at least 15 min prior to entering.	
<b>CAUTION</b>	Extv insect ctl heli ops Apr-Oct.	

**MANITOBA**

AERODROME / FACILITY DIRECTORY

**WINNIPEG / JAMES ARMSTRONG RICHARDSON INTL MB**

**CYWG**



<b>REF</b>	N49 54 36 W97 14 24 Adj W 3°E (2014) UTC-6(5) Elev 784' VTA A5007 LO4 HI4 T1 CAP OC
<b>OPR</b>	Winnipeg Airports Authority 204-987-9798, DND Ops 877-283-6827 H24 Cert Ldg fees
<b>PF</b>	A-1,2,3,6,7,8 B-4 C-5 Mil on Base Transport avbl 1330-2130Z ‡ Mon-Fri, 6 days advance notice required.
<b>CUST</b>	AOE 888-226-7277
<b>FLT PLN</b>	Pilots to open/close VFR flt plan with Edmonton rdo, FISE or by phone.
<b>FIG</b>	Edmonton 866-WXBRIEF (Toll free within Canada) or 866-541-4102 (Toll free within Canada & USA) (file 30 min prior ETD, see PRO)
<b>ACC</b>	IFR, 204-983-8337 or 888-834-3344 or flt plan by Fax at 204-983-2823 & include phone numbers where pilot can be reached prior to dep.
<b>WX</b>	METAR H24. TAF H24, issue times: 00, 06, 12, 18Z. Met brief for mil only. JMC 1-800-WXMETEO (996-3836) or CSN 432-2613. (See COMM)
<b>DUAT</b>	Fast Air; Kelly Western; Shell Aviation Winnipeg

## MANITOBA

## AERODROME / FACILITY DIRECTORY

## WINNIPEG / JAMES ARMSTRONG RICHARDSON INTL MB (Cont'd)

CYWG

## SERVICES

<b>FUEL</b>	100LL, F-34, JA-1 FSII (avbl), HPR
<b>OIL</b>	All (Mil 123, 128, 133, 148, 156)
<b>S</b>	1,2,3,4,5,6
<b>ARFF</b>	DESIGNATED CAT 7 (CAT 8 avbl with prior arrangement, ctc WAA 204-987-9798 O/T call out chg may apply) Discrete emerg freq 122.675
<b>SUP FL</b>	LHOX, D & A-ice H24 Oct 1-May 31, O/R 2 hr PN Jun 1-Aug 31, O/R Sep 1-30. Mil LOX, Nitrogen avbl PN via NOVA msg only.
<b>JASU</b>	CE12, 13, 14, 16, CA2, CEA1
<b>MIL ADV</b>	All tran acft require PPR thru 17 Wg Ops CSN 319-257-2700 204-833-2700 Toll Free 877-283-6827. PPR valid for ± 1 hr ETA. Tran svcg avbl 14-02Z± Mon-Fri, wknds & hols 14-21Z±. 24 hr PN wkds, 48 hr PN for wknds or hol. Non-compliance could result in delays for Mil svcg & prkg or svcg being referred to civ contractor. Mil acft emerg hg space only. 17 Wg ops will arrange D & A-ice with CDF contractor when req by aircrew. All applicable costs will be the responsibility of the aircrew home unit. Mil svcg rstd to park, start & refuelling with Aircrew Supervision exc for CC130 acft. No tow bar for CP140, CT155 & CT156 acft. Ctc Wg Ops (131.4 or 308.8) 20 min prior to ETA & before entering or exiting Mil ramp.
<b>PVT ADV</b>	Fast Air 123.0 204-831-7714; Kelly Western 122.85 204-948-9500; Shell Aviation Winnipeg 123.35 204-956-6172
<b>MIL CON</b>	Exchange Petroleum (Shell) 204-956-6172

## RWY DATA

Rwy 18(185°)/36(005°) 11000x200 ASPH  
 Rwy 13(135°)/31(315°) 8841x200 ASPH Thld 31 displ 140'  
 RESA: 13 738'; 31 492'; 18/36 1000'

## RWY CERT

Rwy 18 RVR 1200(1/4sm)/Rwy 36 RVR 600 AGN VI  
 Rwy 13 RVR 1200(1/4sm)/Rwy 31 RVR 1200(1/4sm) AGN VI

## TWY CERT

Twy A AGN IV  
 Twy: B, G AGN V

## TWY

Twy A: not avbl to acft 160,000 lbs or heavier, exc B757 & B767.  
 Twy E, W: simultaneous use by acft with wingspan 171' or greater not auth.  
 Twy G: Uncontrolled, ctc gnd prior to taxi fr Apron. Discretionary oversteer rqrd for acft with wingspan 171' to less than 214'.

## APRON

Apron I: Ctc aprt for stand assignment. Acft shall be pushed back straight fr all bridge locations on Apron I unless otherwise auth. Acft taxiing or being towed to or fr Apron I ctc gnd ctl prior to manoeuvring.  
 Apron II: not avbl to acft with wingspan 118' or greater.  
 Apron IV: not avbl to acft with wingspan 171' or greater. Pvt.  
 Apron V: Ctc aprt for stand assignment. Ctc gnd ctl prior to taxi or tow. Not avbl to acft with wingspan 171' or greater.  
 Apron VI: Pvt  
 Apron VII: Ctc aprt for stand assignment. Ctc gnd ctl prior to taxi or tow.  
 Apron VIII: acft with wingspan 171' to less than 214' discretionary oversteer rqrd. Pvt.  
 Apron IX, X, XII: Pvt  
 Apron Empire, SkyNorth: Pvt  
 Opr CRFI, PCN

## RCR

## LIGHTING

13-AN(TE HI), 31-AN(TE HI), 18-AN(TE HI CL) P3, 36-AL(TE HI TDZL)

## COMM

<b>RCO</b>	Edmonton rdo 123.25 (FISE) 126.7 (bcst)
<b>ATIS</b>	120.2
<b>CLNC DEL</b>	121.3 all dep acft to ctc clnc del
<b>GND</b>	121.9
<b>TWR</b>	118.3 125.4 (V) (emerg only 204-983-6705)
<b>ARR</b>	119.5
<b>DEP</b>	121.0 (West) 119.9 (East)
<b>VFR ADV</b>	121.0 (West) 119.9 (East)
<b>MIL</b>	Base Ops 131.4 308.8

## MANITOBA

## AERODROME / FACILITY DIRECTORY

## WINNIPEG / JAMES ARMSTRONG RICHARDSON INTL MB (Cont'd)

CYWG

## NAV

**DME** YWI 116.7 Ch 114 N49 53 54 W97 14 35 (801')  
**ILS** INP 109.5 (Rwy 13) RVR  
 IWG 109.9 (Rwy 36) RVR  
 IHV 110.3 (Rwy 31) RVR

## PRO

**AIRPORT:** Rgt hand circuits Rwy 13 & 18 (CAR 602.96). Circuit hgt all rwys 2000 ASL.

**Arrival Requirements**

1. On apch, cross the FAF at 170 kt or less.
2. On visual apch, intercept final at or outside the final apch FAF for landing rwy unless otherwise authorized by ATC.

**Note:** Refer to NOISE ABATEMENT PROCEDURES for additional requirements.

**Training Flight / Photo Block Requirements**

PPR for all block air work, photo flight or training flight operating in Winnipeg TCA. Ctc Winnipeg ACC 204-984-5979 Fax 204-983-2823.

**Note:** Refer to NOISE ABATEMENT PROCEDURES for additional requirements.

**ATS VFR REQUIREMENTS:**

1. **Mode C Transponder Mandatory** - Acft operating in Winnipeg Class C CZ or TCA require a discrete transponder code which must be obtained by filing a flt plan, flt itinerary or by ctc Winnipeg ACC 204-984-5979 at least 15 min prior to entering. Acft departing CYAV may ctc CYAV Tower to obtain a discrete transponder code. Set transponder to discrete code prior to ctc ATC.
2. **VFR Circuits:** PPR. Single engine piston acft repetitive circuits not auth. Single engine piston acft single circuits not auth on weekdays, unless on a simulated IFR trng flt with approved Winnipeg TCA trng slot. Ctc Winnipeg ACC 204-984-5979

**DE-ICING OPERATIONS**

De-icing bays 1, 3, 4, 6 not avbl to acft with wingspan 118' or greater.

De-icing bay 2 avbl to acft with wingspan 214' or greater with discretionary oversteer at entrance.

De-icing bay 5 not avbl to acft with wingspan 214' or greater.

See CAP Central De-icing Facility chart.

For more information, ctc Icehouse 204-987-9436.

1. Prior to push back, notify PAD CONTROL (122.925) and WINNIPEG GND when de-icing is required.
2. Hold short of Central De-icing Facility (CDF) and ctc PAD CONTROL on 122.925.  
**Note:** In the event that the "Hold" light and/or inset lgt can not be utilized, the CDF will deploy a "Follow Me" vehicle.
3. All deicing operations are performed with acft engines running, unless otherwise advised by PAD CONTROL.

**CAUTION: all oprg engines must be maintained at gnd idle thrust settings. De-icing operation limited to maximum wind gusts of 40kts.**

## MANITOBA

## AERODROME / FACILITY DIRECTORY

WINNIPEG / JAMES ARMSTRONG RICHARDSON INTL MB (Cont'd) CYWG

<b>PRO (Cont'd)</b>	4. Once de-icing is complete, acft will be instructed to ctc WINNIPEG GND for taxi clnc. <b>DO NOT ENTER TWY H WITHOUT ATC CLEARANCE. MINIMUM BREAKAWAY THRUST MUST BE USED.</b>
<b>NOISE</b>	Maint engine run-ups & lcl flt tng PPR, ctc 204-987-9798. Noise oprg restrictions & noise abatement procedures in effect, see current CAP.
<b>HELI</b>	Use extreme caution at apron II due to lgt acft & 10' high security fence S of apron. Air taxi along aprons IV & V proh. Caution: 7' high security fence 50' S of Mil ramp 6.
<b>MIL</b>	All VFR Flt Plns within Winnipeg TCA shall include an alt. MIL De-icing All Mil aircrew to arrange de-icing through Wg Ops Ctr.
<b>CAUTION</b>	Radiosonde balloon launches with an ascent rate of 1000 ft/min btwn the hrs of 1715Z-1730Z fr U of M (N49 48 09 W97 08 34, 7.5NM SE apt, aprx 1.2NM SW fr extended rwy centreline 13/31). Ocsl para jumps by 435 Sqn 15-21Z† Mon-Fri. Max alt 3000 ASL. Drop zone 1.5NM radius N49 52 42 W97 29 48 (10NM WSW A/D) at Beaudry Provincial Park. Hi ints lgt oprg dusk-09Z‡ from hotel roof at N49 49 19 W97 09 10 (aprx 5.3NM SE thld Rwy 31). Beams projecting upward. Hi ints lgt may create tempo effects to vision.