
FLIGHT PLAN & SITE SURVEY

F 86-3989 SAULT STE MARIE MODEL AIRPLANE RADIO
CONTROL CLUB- LEIGH'S BAY ROAD

May 22, 2026



IMPORTANT NOTICE

Please ensure you have received all required authorizations prior to flight. This Site Survey was created using RPAS Wilco. The user accepts all responsibility for the accuracy of the information.

Terms & Conditions: rpaswilco.com/#tnc

Mission Information

F 86-3989 SAULT STE MARIE MODEL AIRPLANE RADIO CONTROL CLUB- LEIGH'S BAY ROAD

FLIGHT DETAILS

Reference No:	MAAC-86-3989
Project Name:	SAULT STE MARIE MODEL AIRPLANE RADIO CONTROL CLUB
Pilot Name:	MAAC
Pilot Certificate:	
Mission Type:	VLOS
Flight Start:	May 22, 2026 10:26 PM
Flight End:	May 22, 2026 11:26 PM

LOCATION DETAILS

Flight Address:	LEIGH'S BAY ROAD
Latitude:	46° 30' 49.70" N (46.514)
Longitude:	84° 25' 27.70" W (-84.424)
Field Elevation:	594 ft MSL
Altitude / Radius:	400 ft / 926 m (0.5 nm)
Classification:	UNCONTROLLED
FIR / Contact:	CZYZ / 905-676-4509

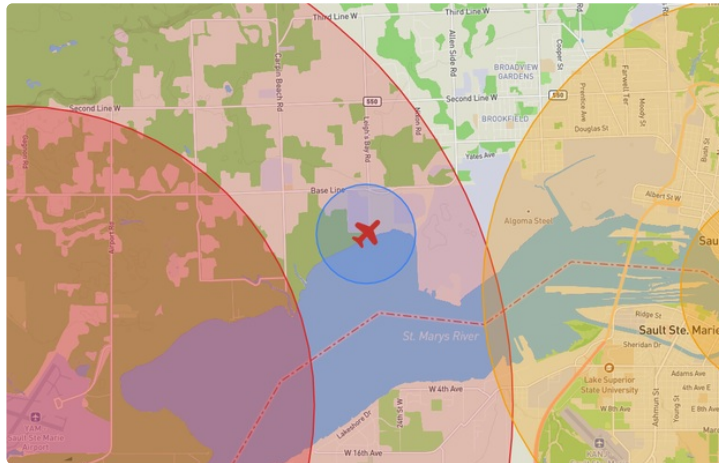
REPORT CONTENTS

Site Survey • Obstacles (if available) • Nearby Aerodromes • Canadian Aviation Regulations • GFA • Aerodrome Supplements • METAR & TAF • NOTAMs • CFS





Flight Map & MODEL Details

MISSION LOCATION SURVEY

FLIGHT AREA MAP



MISSION LOCATION DETAILS

ROLE	LATITUDE	LONGITUDE
 MODEL	46° 30' 49.70" N 46.514	84° 25' 27.70" W -84.424
 Pilot		
 Payload Op.		
 Observer		

Airspace Classification

MISSION LOCATION SURVEY

AIRSPACE MAP



OVERLYING AIRSPACES

Class	Name	Floor	Ceiling
E	Southern Ontario Low Level Control Area f) [CAE]	3500MSL	18000MSL
E	Sault Ste. Marie, ON [TA]	700AGL	18000MSL
E	V300-2 VHF/UHF Airway	2200AGL	18000MSL
D	Sault Ste. Marie, ON [CZ]	SFC	3000MSL
E	Sault Ste. Marie, ON [CAE]	2800AGL	18000MSL
E	T608 Fixed RNAV Route	2200AGL	18000MSL
E	T616 Fixed RNAV Route	2200AGL	18000MSL
E	T675 Fixed RNAV Route	2200AGL	18000MSL
E	T776 Fixed RNAV Route	2200AGL	18000MSL
E	T810 Fixed RNAV Route	2200AGL	18000MSL

NEAREST AERODROMES & DISTANCE FROM OPERATION

SAULT STE. MARIE (CYAM - AERODROME - Cert)	Lat: 46.485	Long: -84.509	7.258KM	3.919NM	SW
SAULT STE. MARIE (CPX8 - WATERDROME - Reg)	Lat: 46.504	Long: -84.323	7.801KM	4.212NM	E
SAULT STE. MARIE (CNR3 - HELIPORT - Reg)	Lat: 46.504	Long: -84.323	7.801KM	4.212NM	E

ONTARIO

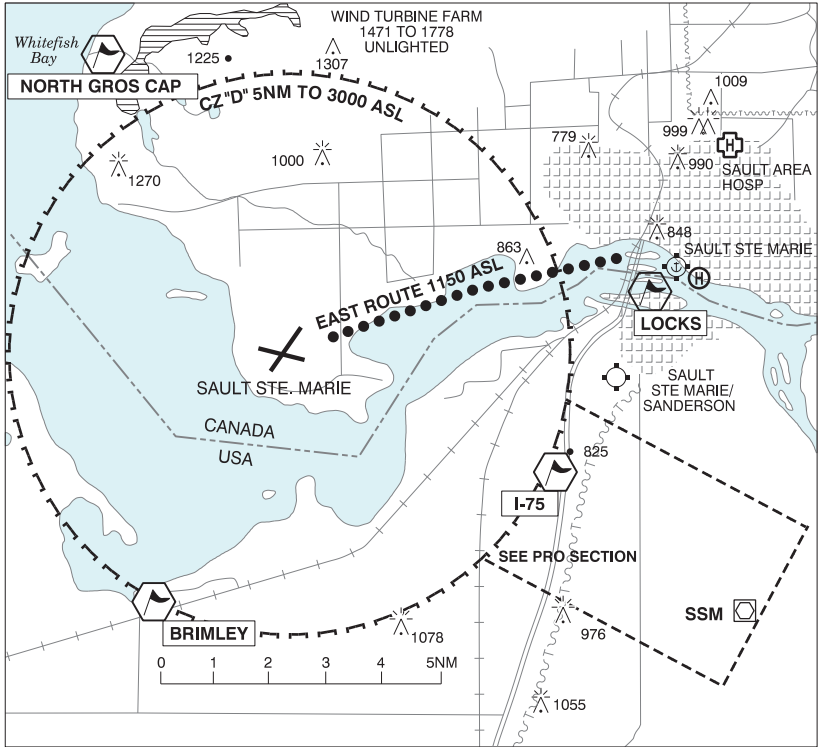
AERODROME / FACILITY DIRECTORY

SAULT STE. MARIE ON

CYAM

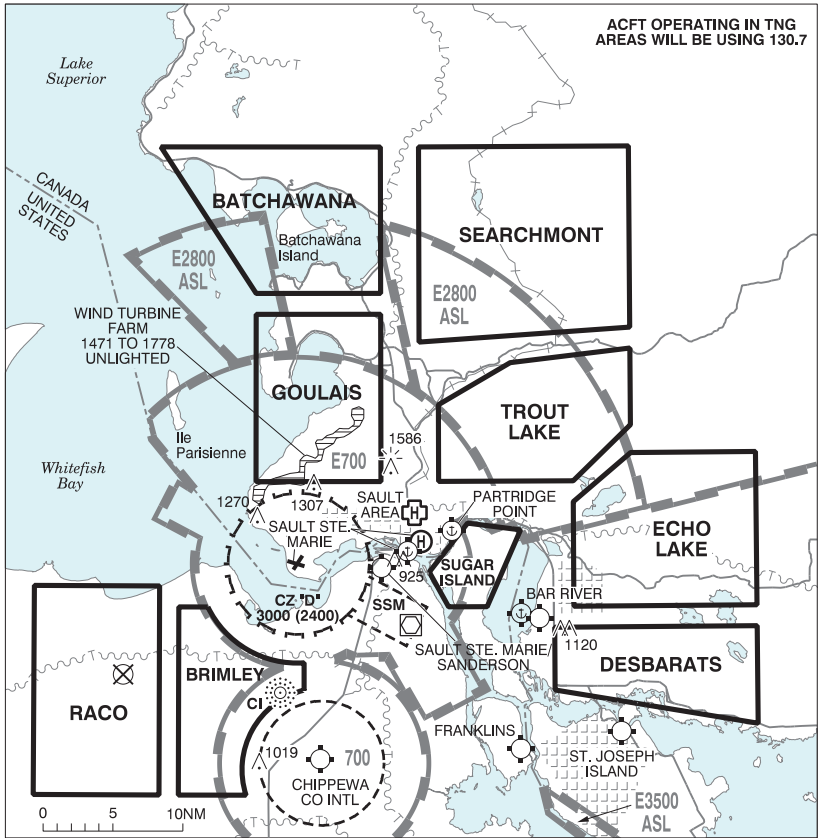
REF	N46 29 07 W84 30 34 8WSW 7°W (2012) UTC-5(4) Elev 629' A5001 LO4 HI4 HI5 CAP	
OPR	Sault Ste. Marie Airport Development Corporation 705-779-3031 1045-0345Z± Cert Ldg fees	
PF	B-1,2,3,6,7 D-4,5	
CUST	AOE/30 888-226-7277	
FLT PLN	Pilots to open/ close VFR flt plan with London rdo 123.475 or by phone. London 866-WXBRIEF (Toll free within Canada) or 866-541-4104 (Toll free within Canada & USA) FIC METAR H24. WX TAF H24, issue times: 02, 08, 14 & 20Z.	
SERVICES	Call out chg may be levied for one or more svcs	
FUEL	100LL, JA-1 (FSII avbl)	
OIL	100, 15W50	
S	1,2,3,4,5,6	
SUP FL	LHOX, D & A-ice PN	
JASU	Mil-CE14, CA2, GTC/GTE85	
PVT ADV	Executive Aviation (World Fuel Services) 122.45 11-24Z± O/T call out chg 249-889-1244 JD Aero (Avjet Fuels) 128.875 10-22Z± 705-779-3977 Ext 200 O/T call out chg apply 705-779-3977 Ext 213/215 or 705-541-8153 (FBO mgr) Executive Aviation Fuels 249-889-1244	
MIL CON		
RWY DATA	Rwy 04(040°)/22(220°) 6000x148 ASPH Rwy 04 up 0.72% last third Rwy 12(115°)/30(295°) 6000x200 ASPH RESA: 04/22 493'	
RWY CERT	Rwy 04/22 AGN IV Rwy 12 RVR 1200(1/4sm)/Rwy 30 RVR 1200(1/4sm) AGN IV	
RCR	Opr Win maint CRFI/RSC 1030-0230Z± Nov 15-Mar 31 O/T call out chg, 3 hrs PN. PCN	
LIGHTING	04-AO(TE ME) P2, 22-AO(TE ME) P2, 12-AN(TE HI), 30-AO(TE HI) P1 ARCAL-118.8 type K when twr clsd.	
COMM	RCO London rdo 123.475 (FISE) 126.7 (bcst) ATIS 133.05 1130-0330Z± GND 121.7 1130-0330Z± TWR Sault 118.8 (E) 1130-0330Z± (emerg only 705-779-3707) MF tfc 118.8 0330-1130Z± 5NM shape irregular 3000 ASL (CAR 602.98) MF only applicable over Cdn territory PAL Toronto Ctr 132.65 344.5	
NAV	VOR/DME SSM 112.2 (T) Ch 59 N46 24 44 W84 18 54 ILS IAM 109.5 (Rwy 12) RVR	
PRO	Heli arr/dep E as indicated on VTPC. Heli arr/dep N & S at Twr discretion. Hi lvl of tfc in the vic Sault, Michigan aprt, also on 122.7. Twy G run-ups: only south of the svc road intxn and facing west.	
CAUTION	Dur win months btwn 0330-1130Z (when ATC clsd), aprt maint & snow removal vehicles may be oprg on the rwy surface. Ctc all gnd vehicles on MF when ATC clsd.	

SAULT STE. MARIE VFR TERMINAL PROCEDURES CHART



NAME	IDENT	LAT/LONG
BRIMLEY	VCBRM	N46° 24' 45" W084° 34' 00"
I-75	VCISF	N46° 26' 00" W084° 23' 36"
LOCKS	VCLKS	N46° 30' 12" W084° 21' 18"
NORTH GROS CAP	VCNGC	N46° 34' 30" W084° 35' 30"

SAULT STE. MARIE VFR TERMINAL PROCEDURES CHART - TRAINING AREAS



CANADA WATER AERODROME SUPPLEMENT

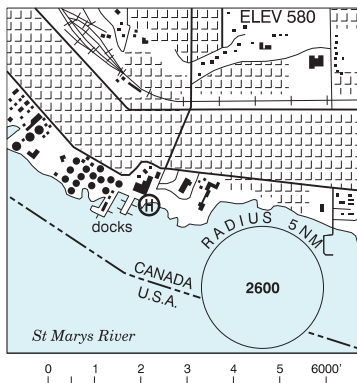
Effective 0901Z 19 March 2026 to 0901Z 18 February 2027

B230 AERODROME/FACILITY DIRECTORY

SAULT STE. MARIE ON

CPX8

REF	N46 30 16 W84 19 24 Adj S 7°W UTC-5(4) Elev 580' A5001
OPR	Cdn Bushplane Heritage Centre 705-945-6242 Reg
PF	B1 avbl 13-22Z‡ C-2,3,4,5,6
FLT PLN	FIC London 866-WXBRIEF (Toll free within Canada) or 866-541-4104 (Toll free within Canada & USA)
SERVICES	12-23Z May-Oct
FUEL	100LL PN Humphrey Aviation Service 705-542-2590
S	1,2,3,4,5
A/D DATA	Open water May-Nov. Current 5 kt, ramp, slipway
LIGHTING	Floodlit 24 hrs.
COMM	ATF tfc 122.7 2NM 3000 ASL
PRO	See Sault Ste. Marie VTPC.
CAUTION	Co-lctd heliport, helipads aprx 200' E of docks. High lvl of tfc in vic Sault, Michigan aprt, also on 122.7. Ramp usage is dependent on lvl of St. Mary's River. Ctc opr.



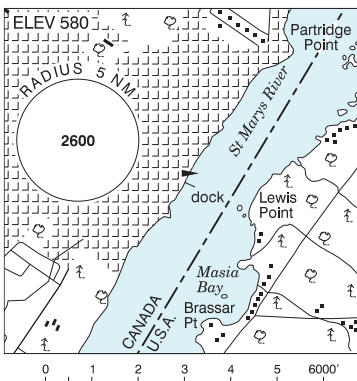
SAULT STE. MARIE FSS-RCO

London 119.4 (RAAS) 0345-1120Z‡ (N43 01 W81 09)

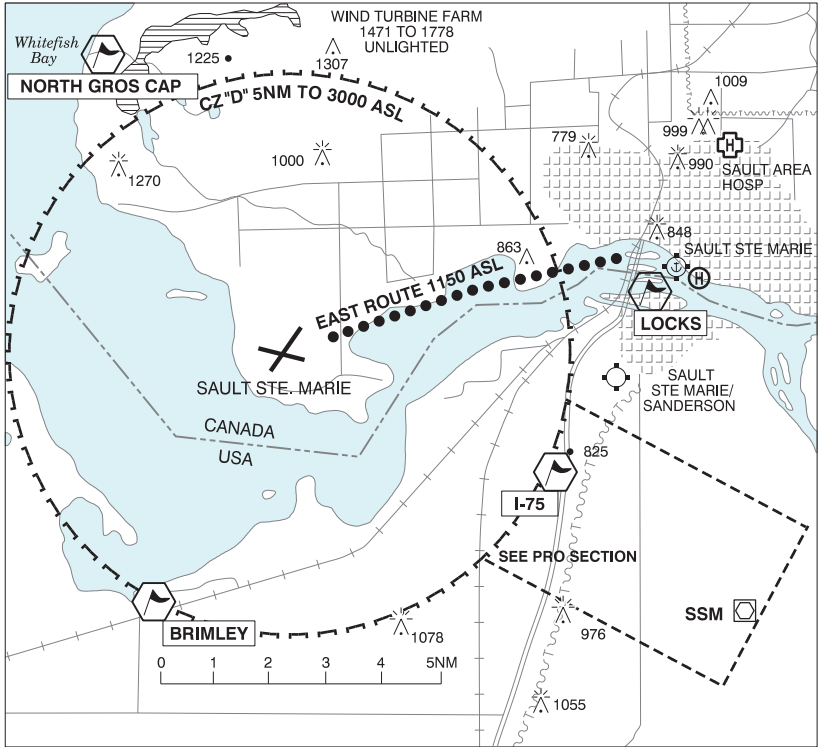
SAULT STE. MARIE / PARTRIDGE POINT ON

CPP9

REF	N46 30 51 W84 14 54 Adj E 7°W (2023) UTC-5(4) Elev 580' A5001
OPR	Mark Dick 705-257-8587 Reg PPR
PF	C-1,2,3,4,5,6,7
FLT PLN	FIC London 866-WXBRIEF (Toll free within Canada) or 866-541-4104 (Toll free within Canada & USA)
A/D DATA	Open water May-Nov.
DOCKS	Ltd moorings (no long-term parking), beach, ramp
COMM	ATF tfc 122.7 2NM 3600 ASL
CAUTION	Heavy boat tfc in St. Mary's River. Heavy tfc vic Sault Michigan aprt.

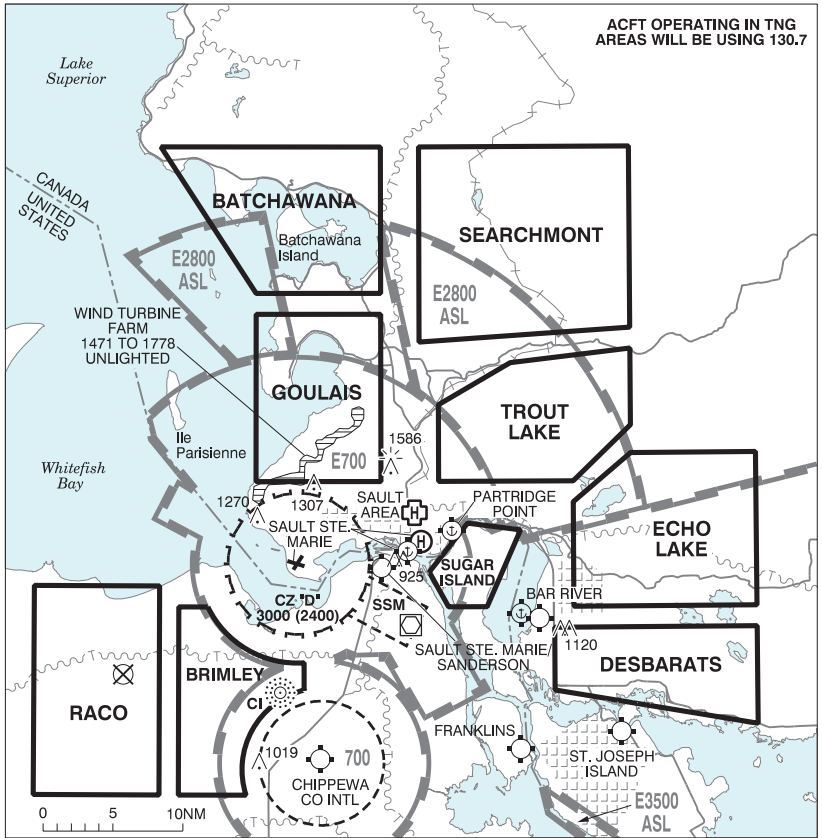


SAULT STE. MARIE VFR TERMINAL PROCEDURES CHART



NAME	IDENT	LAT/LONG
BRIMLEY	VCBRM	N46° 24' 45" W084° 34' 00"
I-75	VCISF	N46° 26' 00" W084° 23' 36"
LOCKS	VCLKS	N46° 30' 12" W084° 21' 18"
NORTH GROS CAP	VCNGC	N46° 34' 30" W084° 35' 30"

SAULT STE. MARIE VFR TERMINAL PROCEDURES CHART - TRAINING AREAS



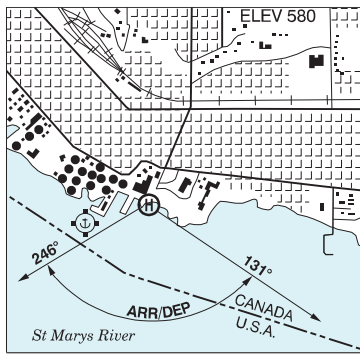
ONTARIO

AERODROME / FACILITY DIRECTORY

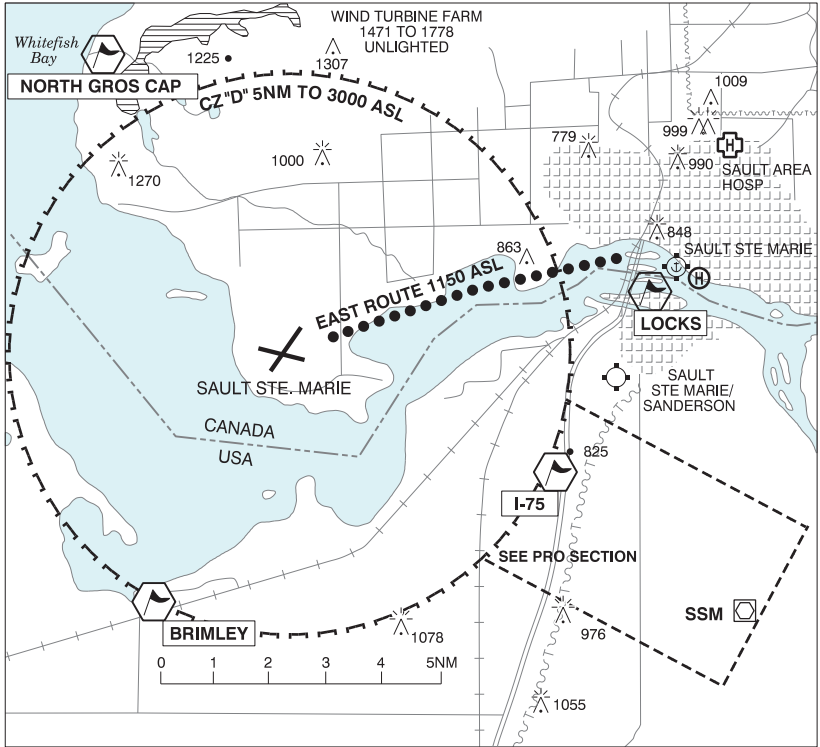
SAULT STE. MARIE ON (Heli)

CNR3

REF	N46 30 16 W84 19 24 Adj S 7°W UTC-5(4) Elev 580' A5001
OPR	Canadian Bushplane Heritage Centre 705-945-6242 Reg
PF	B1 avbl 13-22Z‡ C-2,3,4,5,6
FLT PLN	FIC London 866-WXBRIEF (Toll free within Canada) or 866-541-4104 (Toll free within Canada & USA)
SERVICES	13-22Z‡ May-Oct, dawn til dusk Nov-Apr
FUEL	100LL Humphrey Aviation Services 705-542-2590
HELI DATA	57' dia concrete
RCR	Opr
LIGHTING	Floodlit Apron; Aiming point lighting, 6 red lgts.
COMM	ATF tfc 122.7 2NM 3000 ASL
PRO	Arr/dep btwn 131°-246° fr heli. Arr/dep hover area & aiming point lctd S of pad.
CAUTION	Co-located water aerodrome, docks just W of helipads. Hi lvl of tfc in vic Sault, Michigan aprt, also on 122.7



SAULT STE. MARIE VFR TERMINAL PROCEDURES CHART



NAME	IDENT	LAT/LONG
BRIMLEY	VCBRM	N46° 24' 45" W084° 34' 00"
I-75	VCISF	N46° 26' 00" W084° 23' 36"
LOCKS	VCLKS	N46° 30' 12" W084° 21' 18"
NORTH GROS CAP	VCNGC	N46° 34' 30" W084° 35' 30"

SAULT STE. MARIE VFR TERMINAL PROCEDURES CHART - TRAINING AREAS

