

---

# FLIGHT PLAN & SITE SURVEY

---

B 209-4852 FREDERICTON MODEL AIRCRAFT CLUB-  
INDOOR FLYING SITE

May 22, 2026



**IMPORTANT NOTICE**

Please ensure you have received all required authorizations prior to flight. This Site Survey was created using RPAS Wilco. The user accepts all responsibility for the accuracy of the information.

Terms & Conditions: [rpaswilco.com/#tnc](https://rpaswilco.com/#tnc)

# Mission Information

B 209-4852 FREDERICTON MODEL AIRCRAFT CLUB- INDOOR FLYING SITE

## FLIGHT DETAILS

Reference No:	<b>MAAC-209-4852</b>
Project Name:	<b>FREDERICTON MODEL AIRCRAFT CLUB</b>
Pilot Name:	<b>MAAC</b>
Pilot Certificate:	
Mission Type:	<b>VLOS</b>
Flight Start:	<b>May 22, 2026 11:27 PM</b>
Flight End:	<b>May 23, 2026 12:27 AM</b>

## LOCATION DETAILS

Flight Address:	<b>INDOOR FLYING SITE</b>
Latitude:	<b>45° 53' 47.41" N ( 45.897 )</b>
Longitude:	<b>66° 41' 33.67" W ( -66.693 )</b>
Field Elevation:	<b>446 ft MSL</b>
Altitude / Radius:	<b>400 ft / 926 m ( 0.5 nm )</b>
Classification:	<b>UNCONTROLLED</b>
FIR / Contact:	<b>CZQM / 506-867-7173</b>

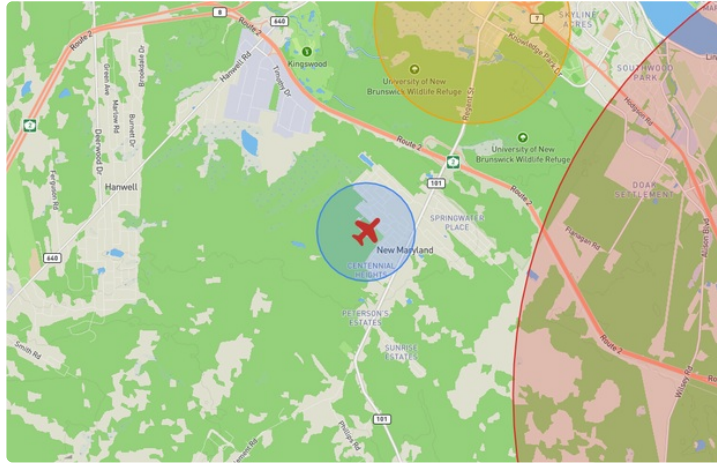
## REPORT CONTENTS

Site Survey • Obstacles (if available) • Nearby Aerodromes • Canadian Aviation Regulations • GFA • Aerodrome Supplements • METAR & TAF • NOTAMs • CFS





# Flight Map & MODEL Details

MISSION LOCATION SURVEY

## FLIGHT AREA MAP



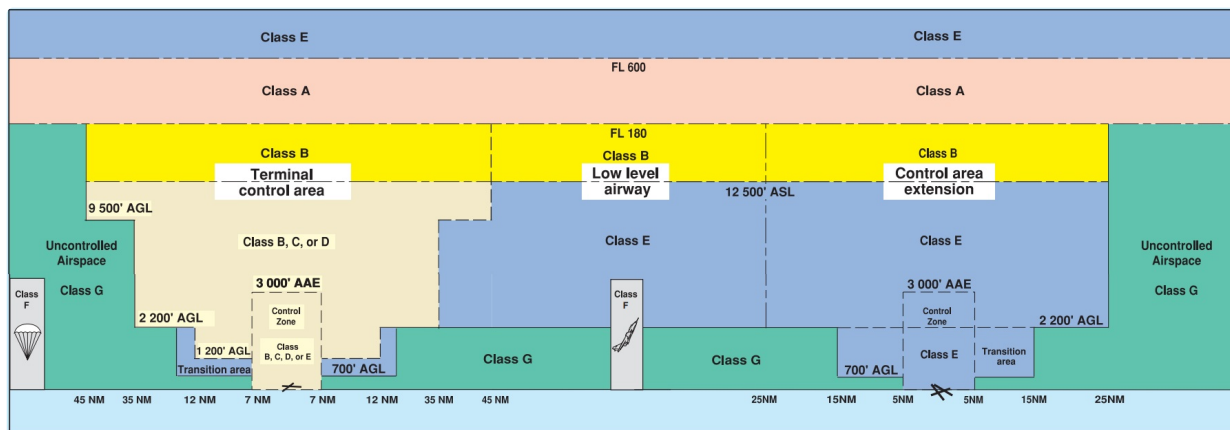
## MISSION LOCATION DETAILS

ROLE	LATITUDE	LONGITUDE
 MODEL	45° 53' 47.41" N 45.897	66° 41' 33.67" W -66.693
 Pilot		
 Payload Op.		
 Observer		

# Airspace Classification

MISSION LOCATION SURVEY

## AIRSPACE MAP



## OVERLYING AIRSPACES

Class	Name	Floor	Ceiling
E	T698-2 Fixed RNAV Route	2200AGL	18000MSL
E	Fredericton, NB [TA]	700AGL	18000MSL
E	T739-3 Fixed RNAV Route	2200AGL	18000MSL
D	Fredericton, NB [CZ]	SFC	3500MSL
F	CYR720 FREDERICTON/GAGETOWN, NB	SFC	250STD
F	CYR724 FREDERICTON/GAGETOWN, NB	SFC	250STD
E	Gagetown, NB (Heliport) [CZ]	SFC	3500MSL

## NEAREST AERODROMES & DISTANCE FROM OPERATION

FREDERICTON (RCMP) (CRC2 - HELIPORT - Reg)	Lat: 45.932	Long: -66.667	4.398KM	2.375NM	NE
FREDERICTON INTL (CYFC - AERODROME/HELIPORT - Cert)	Lat: 45.869	Long: -66.537	12.448KM	6.721NM	E
WEYMAN AIRPARK (CCG3 - AERODROME - Reg)	Lat: 46.038	Long: -66.859	20.269KM	10.944NM	NW

## NEW BRUNSWICK

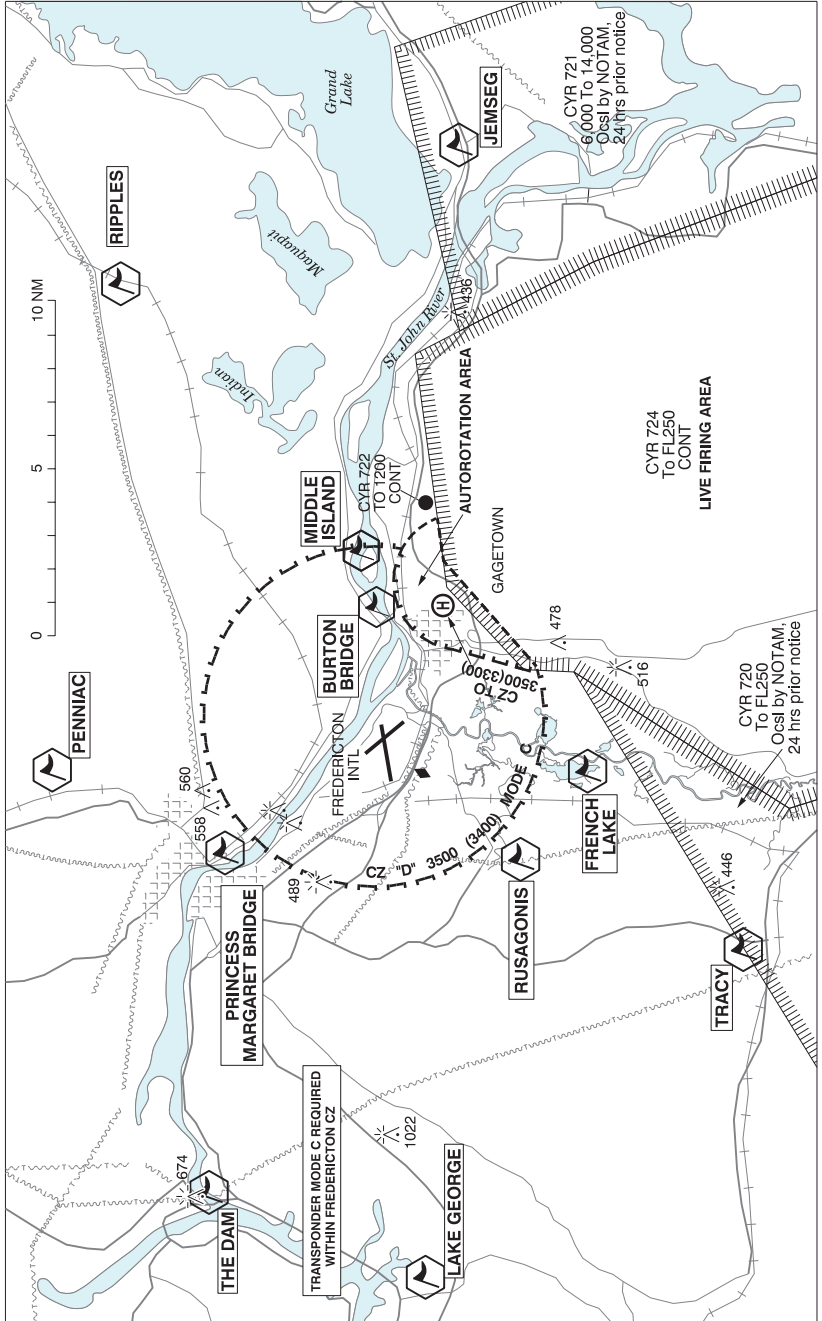
## AERODROME / FACILITY DIRECTORY

## FREDERICTON (RCMP) NB (Heli)

CRC2

<b>REF</b>	N45 55 54 W66 40 00 Adj 18°W (2014) UTC-4(3) Elev 369' A5003	
<b>OPR</b>	RCMP 506-451-6050 Reg PPR	
<b>FLT PLN</b>		
<b>FIC</b>	London 866-WXBRIEF (Toll free within Canada) or 866-541-4104 (Toll free within Canada & USA)	
<b>ACC</b>	(IFR only) Moncton 506-867-7177 or 866-480-8200.	
<b>HELI DATA</b>	FATO/TLOF 77' x 77' ASPH	
<b>LIGHTING</b>	RF(FL) DR(LO) Arr/dep 150° fr heli	
<b>COMM</b>		
<b>ATF</b>	tfc 123.2 5NM 3400 ASL excluding Fredericton Intl CZ	
<b>PRO</b>	Arr/dep 150° & 313° fr heli. Ctc Fredericton TWR 119.0 1045-0345Z± O/T Saint John rdo 119.0 prior to arr/dep to advise intentions.	

FREDERICTON VFR TERMINAL PROCEDURES CHART



## FREDERICTON VFR TERMINAL PROCEDURES CHART (Cont'd)

NAME	IDENT	LAT/LONG
BURTON BRIDGE	VCBTB	N45° 51' 54" W066° 27' 05"
FRENCH LAKE	VCFRL	N45° 46' 00" W066° 33' 47"
JEMSEG	VCJMS	N45° 49' 44" W066° 07' 00"
LAKE GEORGE	VCLKG	N45° 51' 19" W066° 55' 34"
MIDDLE ISLAND	VCMDI	N45° 52' 45" W066° 24' 58"
PENNIAC	VCPNC	N46° 02' 00" W066° 35' 04"
PRINCESS MARGARET BRIDGE	VCRMB	N45° 56' 29" W066° 37' 33"
RIPPLES	VCRPL	N46° 00' 00" W066° 13' 00"
RUSAGONIS	VCRUS	N45° 48' 00" W066° 37' 28"
THE DAM	VCDAM	N45° 57' 23" W066° 52' 13"
TRACY	VCTRC	N45° 41' 03" W066° 41' 05"

## VFR ROUTE PROCEDURES

**DEPARTURES:**

MACTAQUAC (NW): Outbound clear circuit, direct MACTAQUAC Dam enroute. Altitude: Climb to and maintain 2600 ft until clear of CZ.

RIPPLES (ENE): Outbound clear circuit, direct RIPPLES enroute, maintain North of the VOR at all times. Altitude: Climb to and maintain 2600 ft until clear of CZ and then maintain 3000 ft until training area or at/abeam Grand Lake.

PENNIAC DEPARTURE (N): Outbound clear circuit direct PENNIAC enroute. Altitude: Climb to and maintain 2600 ft until clear of CZ.

JEMSEG (SE): Outbound: Follow RIPPLES DEPARTURE, then turn right (south) to JEMSEG enroute. Altitude: Climb to and maintain 3000 ft until at/abeam JEMSEG.

TRACY (SW): Outbound clear circuit, direct TRACY enroute. Altitude: Climb to and maintain 2600 ft until clear of CZ.

Departing aircraft must join the route as soon as practicable after departure (i.e. once clear of the circuit unless instructed by ATC to turn after departure), follow the routes as described and maintain 2,600 feet until they have departed the Fredericton CZ.

**ARRIVALS:**

HWY10 (ENE): Inbound direct RIPPLES, follow Hwy 10 until North of airport, then direct CYFC. Maintain North of VOR at all times. Altitude: If inbound from East, descend to 2500 ft before Grand Lake, then descend to and maintain 1600 ft prior to entering CZ.

LAKE GEORGE (NW): Inbound direct Hwy 2 and Hwy 3 intersection, direct CYFC, maintain North of apch Rwy 09 at all times. Altitude: Descend to and maintain 1600 ft prior to entering CZ.

PENNIAC (N): Inbound direct PENNIAC, direct CYFC. Altitude: Descend to and maintain 1600 ft prior to entering CZ.

JEMSEG (SE): Inbound direct JEMSEG, direct RIPPLES, then follow HWY10 ARRIVAL. Altitude: Descend to 2500 ft at/abeam JEMSEG, then descend to and maintain 1600 ft prior to entering CZ.

TRACY: Inbound direct TRACY, direct CYFC. Altitude: Descend to and maintain 1600 ft prior to entering CZ.

Arriving aircraft must enter the Zone at 1,600', once inside CZ, descend at pilot's discretion, unless otherwise instructed, cleared or requested to maintain a specific altitude.

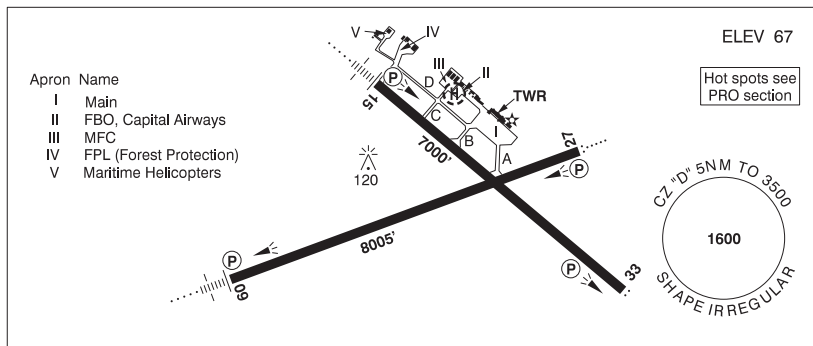


**NEW BRUNSWICK**

**AERODROME / FACILITY DIRECTORY**

**FREDERICTON INTL NB**

**CYFC**



<b>REF</b>	N45 52 08 W66 32 14 7SE 18°W (2014) UTC-4(3) Elev 67' A5003 LO8 HI6 CAP OC
<b>OPR</b>	Fredericton International Airport Authority Inc. 506-460-0920 0845-0515Z† Cert
<b>PF</b>	A-1,2,3,6,7 C-4,5
<b>CUST</b>	AOE/55 (140 with staged off-loading) 12-04Z† 888-226-7277
<b>FLT PLN</b>	<p><b>FIG</b> London 866-WXBRIEF (Toll free within Canada) or 866-541-4104 (Toll free within Canada &amp; USA)</p> <p><b>ACC</b> (IFR only) Moncton 506-867-7177 or 866-480-8200.</p> <p><b>WX</b> METAR AUTO H24 WxCam TAF H24, issue times: 00, 06, 12, 18Z.</p>
<b>SERVICES</b>	Call out chg may be levied for one or more svcs
<b>FUEL</b>	100LL, JA-1 (FSII avbl), F-34, IP, HPR
<b>OIL</b>	15W50
<b>S</b>	1,2,4,6 Capital Airways
<b>ARFF</b>	DESIGNATED CAT 6 (CAT 7 4 hr PN) 0845-0515Z†
<b>JASU</b>	CE16 Capital Airways
<b>PVT ADV</b>	Capital Airways Inc. 122.87 506-446-3588 12-22Z† O/T PN 506-238-3653 call out chg. Air Canada Ground Handling 130.375 506-446-6133
<b>MIL CON</b>	Menzies Aviation/ASIG 1-506-470-2320
<b>RWY DATA</b>	Rwy 09(087°)/27(267°) 8005x200 ASPH Rwy 15(148°)/33(328°) 7000x150 ASPH RESA: Rwy 15 492'
<b>RWY CERT</b>	Rwy 09 RVR 1200(1/4 sm)/Rwy 27 RVR 1200(1/4 sm) AGN V Rwy 15 RVR 1200(1/4 sm)/Rwy 33 RVR 1200(1/4 sm) AGN V
<b>TWY CERT</b>	Twy C AGN II Twy D AGN IIIB
<b>TWY</b>	Twy C uncontrolled NE of Twy D
<b>HELI DATA</b>	Parking Pad: 60' dia ASPH Max heli overall length 49'
<b>RCR</b>	Opr CRFI, win maint 0915-0400Z† PN for extended svc. PCN
<b>LIGHTING</b>	09-AN(TE HI) P2, 27-AO(TE HI) P2, 15-AN(TE HI) P2, 33-AS(TE HI) P2 ARCAL-119.0 type K (when twr closed)

## NEW BRUNSWICK

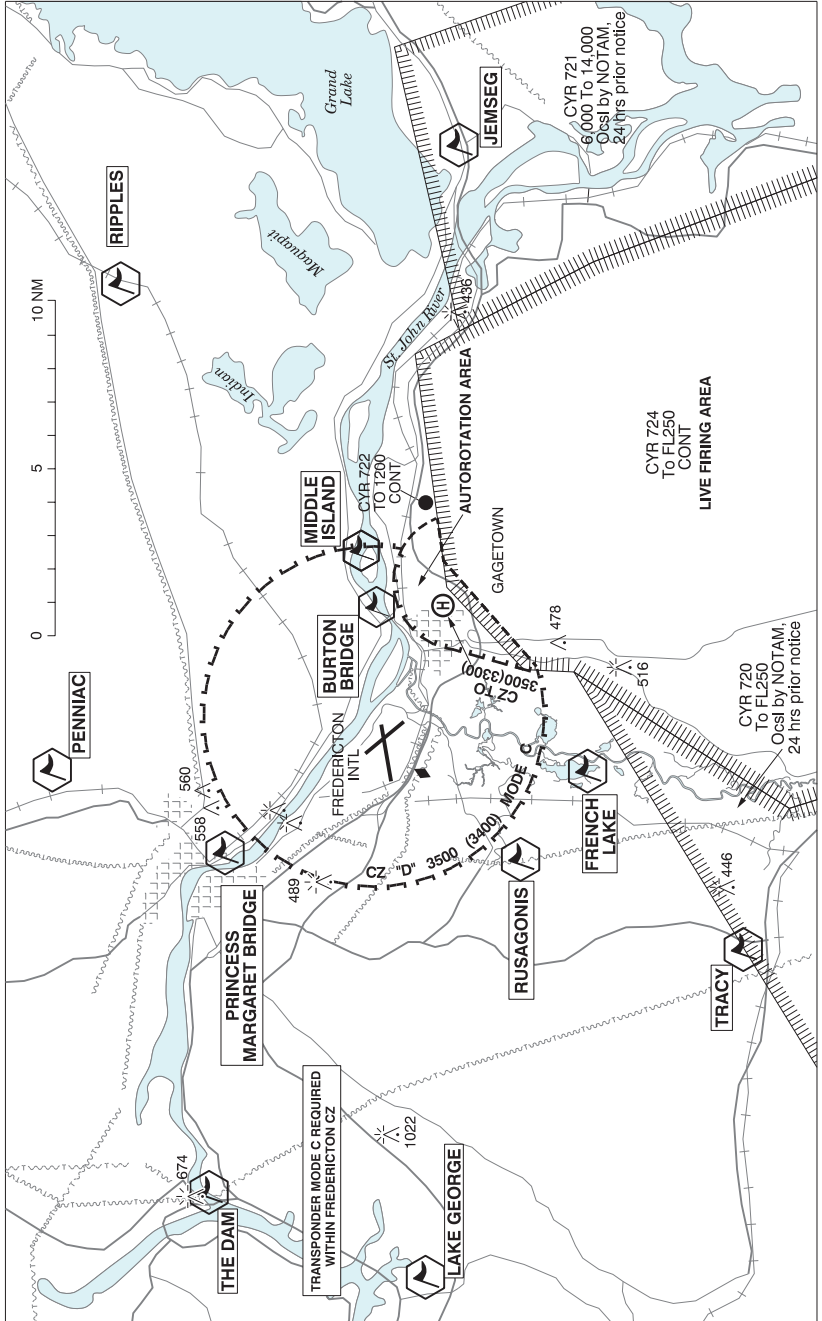
## AERODROME / FACILITY DIRECTORY

## FREDERICTON INTL NB (Cont'd)

CYFC

<b>COMM</b>	<b>RCO</b>	Saint John rdo 119.0 PTC avbl (RAAS) 0345-1045Z† (emerg only 506-646-7223)
	<b>ATIS</b>	127.55 1045-0345Z† (O/T AWOS)
	<b>GND</b>	121.7 1045-0345Z†
	<b>TWR</b>	119.0 (E) 1045-0345Z† (emerg only 506-446-3420)
	<b>MF</b>	Saint John rdo 119.0 0345-1045Z† 5NM 3500 ASL (CAR 602.98)
	<b>PAL</b>	Moncton Ctr 124.3 135.5 270.8
<b>NAV</b>	<b>DME</b>	IDC 111.3 Ch 50 N45 51 47 W66 32 52 (86')
	<b>ILS</b>	IDC 111.3 (Rwy 09) RVR
<b>PRO</b>	Pivot turnaround proh; acft must use all avbl rwy width when making turnaround. Dep Rwy 15 turn as soon as practicable after tkof to remain clear of CYR724. Transponder MODE C required within the Fredericton CZ. Pilots should refer to Canadian Airport Charts (CAC) to obtain details on established hot spots, prior to operating on maneuvering areas. CAC are available for free on the NAV CANADA website. <b>VFR ARR/DEP ROUTES:</b> See FREDERICTON VTPC - TRAINING AREAS	
<b>CAUTION</b>	<b>RESTRICTED AREAS:</b> Extv live firing in CYR724, 725 4NM SE of aprt. <b>AIRSPACE:</b> Gagetown Class "E" CZ 3.5NM SE to 3500 ASL.	

FREDERICTON VFR TERMINAL PROCEDURES CHART



## FREDERICTON VFR TERMINAL PROCEDURES CHART (Cont'd)

NAME	IDENT	LAT/LONG
BURTON BRIDGE	VCBTB	N45° 51' 54" W066° 27' 05"
FRENCH LAKE	VCFRL	N45° 46' 00" W066° 33' 47"
JEMSEG	VCJMS	N45° 49' 44" W066° 07' 00"
LAKE GEORGE	VCLKG	N45° 51' 19" W066° 55' 34"
MIDDLE ISLAND	VCMDI	N45° 52' 45" W066° 24' 58"
PENNIAC	VCPNC	N46° 02' 00" W066° 35' 04"
PRINCESS MARGARET BRIDGE	VCRMB	N45° 56' 29" W066° 37' 33"
RIPPLES	VCRPL	N46° 00' 00" W066° 13' 00"
RUSAGONIS	VCRUS	N45° 48' 00" W066° 37' 28"
THE DAM	VCDAM	N45° 57' 23" W066° 52' 13"
TRACY	VCTRC	N45° 41' 03" W066° 41' 05"

## VFR ROUTE PROCEDURES

**DEPARTURES:**

MACTAQUAC (NW): Outbound clear circuit, direct MACTAQUAC Dam enroute. Altitude: Climb to and maintain 2600 ft until clear of CZ.

RIPPLES (ENE): Outbound clear circuit, direct RIPPLES enroute, maintain North of the VOR at all times. Altitude: Climb to and maintain 2600 ft until clear of CZ and then maintain 3000 ft until training area or at/abeam Grand Lake.

PENNIAC DEPARTURE (N): Outbound clear circuit direct PENNIAC enroute. Altitude: Climb to and maintain 2600 ft until clear of CZ.

JEMSEG (SE): Outbound: Follow RIPPLES DEPARTURE, then turn right (south) to JEMSEG enroute. Altitude: Climb to and maintain 3000 ft until at/abeam JEMSEG.

TRACY (SW): Outbound clear circuit, direct TRACY enroute. Altitude: Climb to and maintain 2600 ft until clear of CZ.

Departing aircraft must join the route as soon as practicable after departure (i.e. once clear of the circuit unless instructed by ATC to turn after departure), follow the routes as described and maintain 2,600 feet until they have departed the Fredericton CZ.

**ARRIVALS:**

HWY10 (ENE): Inbound direct RIPPLES, follow Hwy 10 until North of airport, then direct CYFC. Maintain North of VOR at all times. Altitude: If inbound from East, descend to 2500 ft before Grand Lake, then descend to and maintain 1600 ft prior to entering CZ.

LAKE GEORGE (NW): Inbound direct Hwy 2 and Hwy 3 intersection, direct CYFC, maintain North of apch Rwy 09 at all times. Altitude: Descend to and maintain 1600 ft prior to entering CZ.

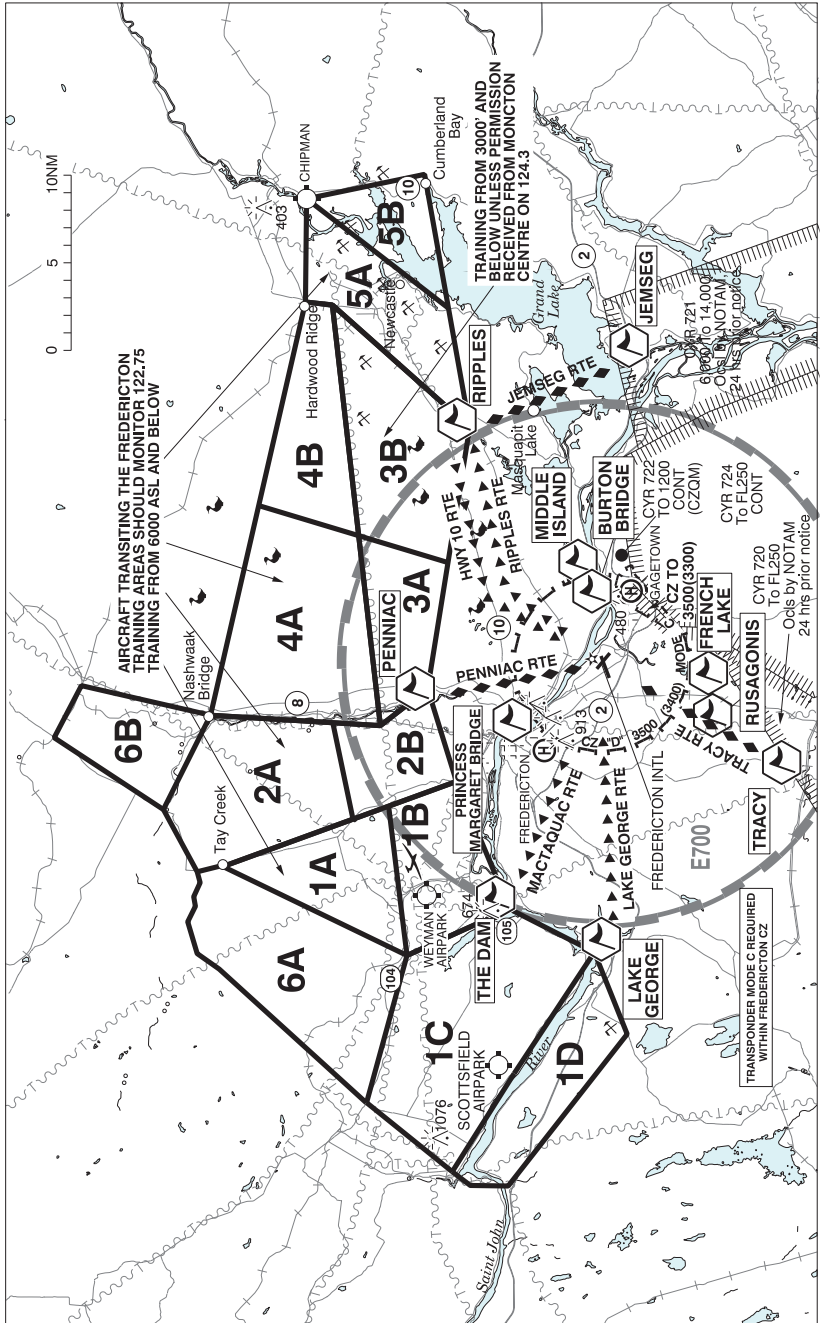
PENNIAC (N): Inbound direct PENNIAC, direct CYFC. Altitude: Descend to and maintain 1600 ft prior to entering CZ.

JEMSEG (SE): Inbound direct JEMSEG, direct RIPPLES, then follow HWY10 ARRIVAL. Altitude: Descend to 2500 ft at/abeam JEMSEG, then descend to and maintain 1600 ft prior to entering CZ.

TRACY: Inbound direct TRACY, direct CYFC. Altitude: Descend to and maintain 1600 ft prior to entering CZ.

Arriving aircraft must enter the Zone at 1,600', once inside CZ, descend at pilot's discretion, unless otherwise instructed, cleared or requested to maintain a specific altitude.

**FREDERICTON VFR TERMINAL PROCEDURES CHART - TRAINING AREAS**



**NEW BRUNSWICK**

**AERODROME / FACILITY DIRECTORY**

**WEYMAN AIRPARK NB**

**CCG3**

<b>REF</b>	N46 02 15 W66 51 32 17°W (2015) UTC-4(3) Elev 140' A5003
<b>OPR</b>	David Bradley 506-450-4087 Reg PPR
<b>PF</b>	B-1 C-2 D-3,4,5,6
<b>FLT PLN</b>	<p><b>FIC</b> London 866-WXBRIEF (Toll free within Canada) or 866-541-4104 (Toll free within Canada &amp; USA)</p> <p><b>ACC</b> (IFR only) Moncton 506-867-7177 or 866-480-8200.</p>
<b>RWY DATA</b>	Rwy 05/23 3000x80 SAND/GRVL/chip seal
<b>RCR</b>	Opr No win maint
<b>COMM</b>	
<b>ATF</b>	tfc 123.2 5NM 3100 ASL
<b>CAUTION</b>	Glider activity Apr 15-Dec 15. Rwy may be soft during thaw. Scottfield Airpark aprx 12NM W, ATF 123.2.

