
FLIGHT PLAN & SITE SURVEY

M 146-4118 SAUGEEN R/C FLYERS- FIELD - 1164
SIDEROAD #30 SOUTH BRUCE

May 22, 2026



IMPORTANT NOTICE

Please ensure you have received all required authorizations prior to flight. This Site Survey was created using RPAS Wilco. The user accepts all responsibility for the accuracy of the information.

Terms & Conditions: rpswilco.com/#tnc

Mission Information

M 146-4118 SAUGEEN R/C FLYERS- FIELD - 1164 SIDEROAD #30 SOUTH BRUCE

FLIGHT DETAILS

Reference No:	MAAC-146-4118
Project Name:	SAUGEEN R/C FLYERS
Pilot Name:	MAAC
Pilot Certificate:	
Mission Type:	VLOS
Flight Start:	May 22, 2026 10:30 PM
Flight End:	May 22, 2026 11:30 PM

LOCATION DETAILS

Flight Address:	FIELD - 1164 SIDEROAD #30 SOUTH BRUCE
Latitude:	44° 6' 0.21" N (44.1)
Longitude:	81° 2' 23.09" W (-81.04)
Field Elevation:	968 ft MSL
Altitude / Radius:	400 ft / 926 m (0.5 nm)
Classification:	UNCONTROLLED
FIR / Contact:	CZYZ / 905-676-4509

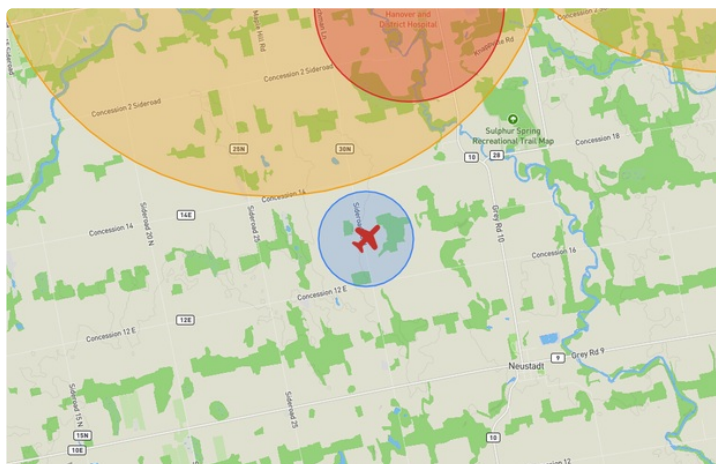
REPORT CONTENTS

Site Survey • Obstacles (if available) • Nearby Aerodromes • Canadian Aviation Regulations • GFA • Aerodrome Supplements • METAR & TAF • NOTAMs • CFS




Flight Map & MODEL Details

MISSION LOCATION SURVEY

FLIGHT AREA MAP



MISSION LOCATION DETAILS

ROLE	LATITUDE	LONGITUDE
 MODEL	44° 6' 0.21" N 44.1	81° 2' 23.09" W -81.04
 Pilot		
 Payload Op.		
 Observer		

Airspace Classification

MISSION LOCATION SURVEY

AIRSPACE MAP



OVERLYING AIRSPACES

Class	Name	Floor	Ceiling
E	Southern Ontario Low Level Control Area f) [CAE]	3500MSL	18000MSL
E	Southern Ontario Low Level Control Area a) [CAE]	2500MSL	6500MSL
E	Southern Ontario Low Level Control Area c) [CAE]	6500MSL	18000MSL
E	Toronto, ON [TSP]	6500MSL	12500MSL
E	Southern Ontario Low Level Control Area g) [CAE]	3500MSL	6500MSL

NEAREST AERODROMES & DISTANCE FROM OPERATION

SAUGEEN MUNI (CYHS - AERODROME - Reg)	Lat: 44.158	Long: -81.063	6.682KM	3.608NM	N
HANOVER (DISTRICT HOSPITAL) (CNZ7 - HELIPORT - Cert)	Lat: 44.141	Long: -81.029	4.612KM	2.49NM	N
ALLAN PARK (CAP2 - AERODROME - Reg)	Lat: 44.179	Long: -80.951	11.311KM	6.107NM	NE

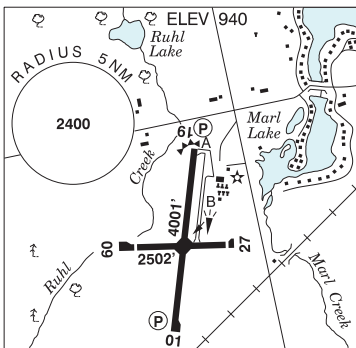
ONTARIO

AERODROME / FACILITY DIRECTORY

HANOVER / SAUGEEEN MUNI ON

CYHS

REF	N44 09 29 W81 03 48 1.6WNW 9°W (2013) UTC-5(4) Elev 940' A5000 LO4 LO6 CAP
OPR	Town 519-364-3220 Reg
PF	B-1,2 C-2,3,4,5,6
CUST	AOE/15 888-226-7277 14-22Z† Mon-Fri exc hols
FLT PLN	
 FIC	London 866-WXBRIEF (Toll free within Canada) or 866-541-4104 (Toll free within Canada & USA)
 WX	WxCam
SERVICES	
 FUEL	100LL, JA (FSII avbl) Self serve (VISA, MasterCard, Amex, debit)
 OIL	All
 S	4,5,6
RWY DATA	Rwy 01(012°)/19(192°) 4001x75 ASPH Rwy 19 down 0.85% AGN II Rwy 09(093°)/27(273°) 2502x50 ASPH Thld 09 displ 331'. Thld 27 displ 120'.
 RCR	Opr
LIGHTING	01-(TE LO) AP, 19-(TE LO) AP ARCAL-122.8 type J
COMM	
 ATF	UNICOM ltd hrs O/T tfc 122.8 5NM 3900 ASL
PRO	Rgt hand circuits Rwy 19 & 09 (CAR 602.96).
CAUTION	Wildlife frequently on rwy.



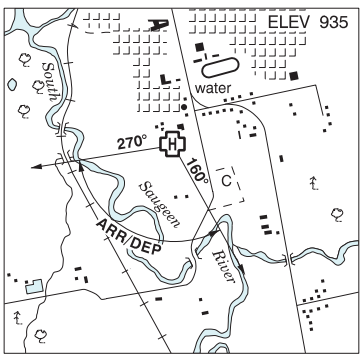
ONTARIO

AERODROME / FACILITY DIRECTORY

HANOVER (DISTRICT HOSP) ON (Heli)

CNZ7

REF	N44 08 27 W81 01 45 Adj S 9°W UTC-5(4) Elev 935' A5000
OPR	Hanover District Hosp 519-364-2340 Cert PPR
FLT PLN	FIC London 866-WXBRIEF (Toll free within Canada) or 866-541-4104 (Toll free within Canada & USA)
HELI DATA	86' x 86' ASPH 114' x 114' Rstd max heli length 57.5'
LIGHTING	RY(LO) RF(FL) ARCAL-122.625 type J
COMM	A/G Ambulance dispatch 129.275
PRO	Arr/dep 160° to 270° fr heli, slope 8% (H3), day/night use.



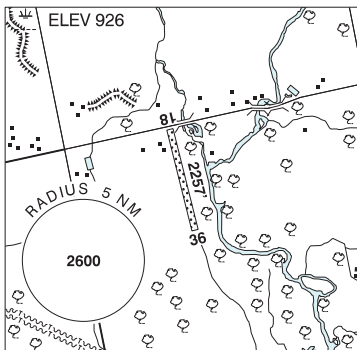
ONTARIO

AERODROME / FACILITY DIRECTORY

ALLAN PARK ON

CAP2

REF	N44 10 47 W80 57 05 1.2WNW 10°W (2015) UTC-5(4) Elev 926' A5000
OPR	Greg Robinson 519-364-3898 or 519-369-4976 Reg PPR
PF	C-1,2,3,4,5,6
FLT PLN	
FIC	London 866-WXBRIEF (Toll free within Canada) or 866-541-4104 (Toll free within Canada & USA)
RWY DATA	Rwy 18(176°)/36(356°) 2257x75 GRASS
RCR	Opr No win maint. Soft in spring.



COMM	
ATF	tfc 122.8 5NM (centred on Hanover A/D) 3900 ASL
CAUTION	Hydro lines along road at N end of rwy, trees at S end, high intensity P-line 150' AGL 2500' S of rwy marked with tana balls.