
FLIGHT PLAN & SITE SURVEY

B 165-4150 RIVERSIDE MODELLING ASSOCIATION-
STEEVES ST. HILLSBOROUGH

May 22, 2026



IMPORTANT NOTICE

Please ensure you have received all required authorizations prior to flight. This Site Survey was created using RPAS Wilco. The user accepts all responsibility for the accuracy of the information.

Terms & Conditions: rpaswilco.com/#tnc

Mission Information

B 165-4150 RIVERSIDE MODELLING ASSOCIATION- STEEVES ST. HILLSBOROUGH

FLIGHT DETAILS

Reference No:	MAAC-165-4150
Project Name:	RIVERSIDE MODELLING ASSOCIATION
Pilot Name:	MAAC
Pilot Certificate:	
Mission Type:	VLOS
Flight Start:	May 22, 2026 11:31 PM
Flight End:	May 23, 2026 12:31 AM

LOCATION DETAILS

Flight Address:	STEEVES ST. HILLSBOROUGH
Latitude:	45° 55' 24.49" N (45.923)
Longitude:	64° 38' 15.85" W (-64.638)
Field Elevation:	23 ft MSL
Altitude / Radius:	400 ft / 926 m (0.5 nm)
Classification:	UNCONTROLLED
FIR / Contact:	CZQM / 506-867-7173

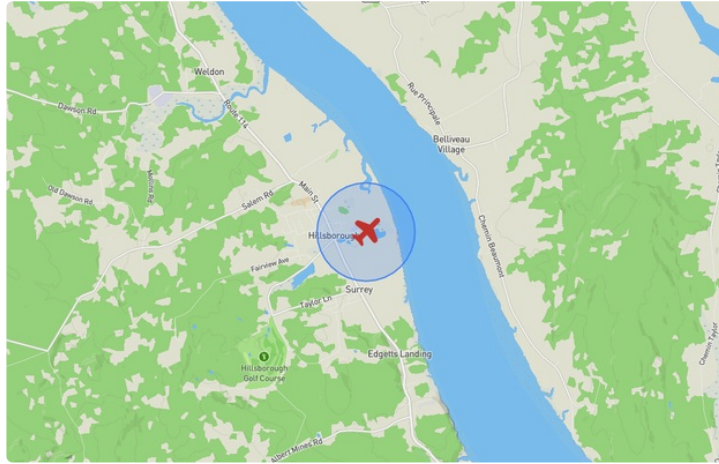
REPORT CONTENTS

Site Survey • Obstacles (if available) • Nearby Aerodromes • Canadian Aviation Regulations • GFA • Aerodrome Supplements • METAR & TAF • NOTAMs • CFS





Flight Map & MODEL Details

MISSION LOCATION SURVEY

FLIGHT AREA MAP



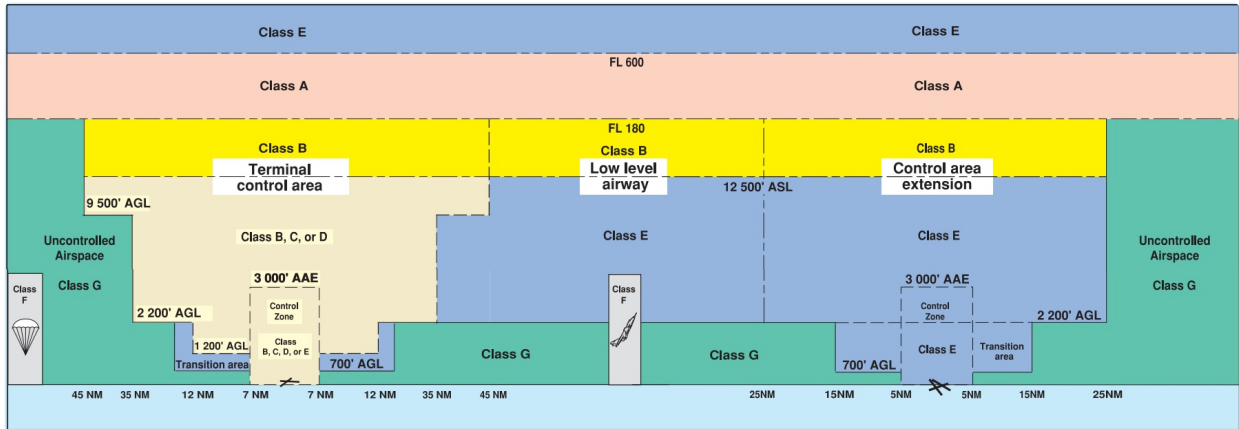
MISSION LOCATION DETAILS

ROLE	LATITUDE	LONGITUDE
 MODEL	45° 55' 24.49" N 45.923	64° 38' 15.85" W -64.638
 Pilot		
 Payload Op.		
 Observer		

Airspace Classification

MISSION LOCATION SURVEY

AIRSPACE MAP



OVERLYING AIRSPACES

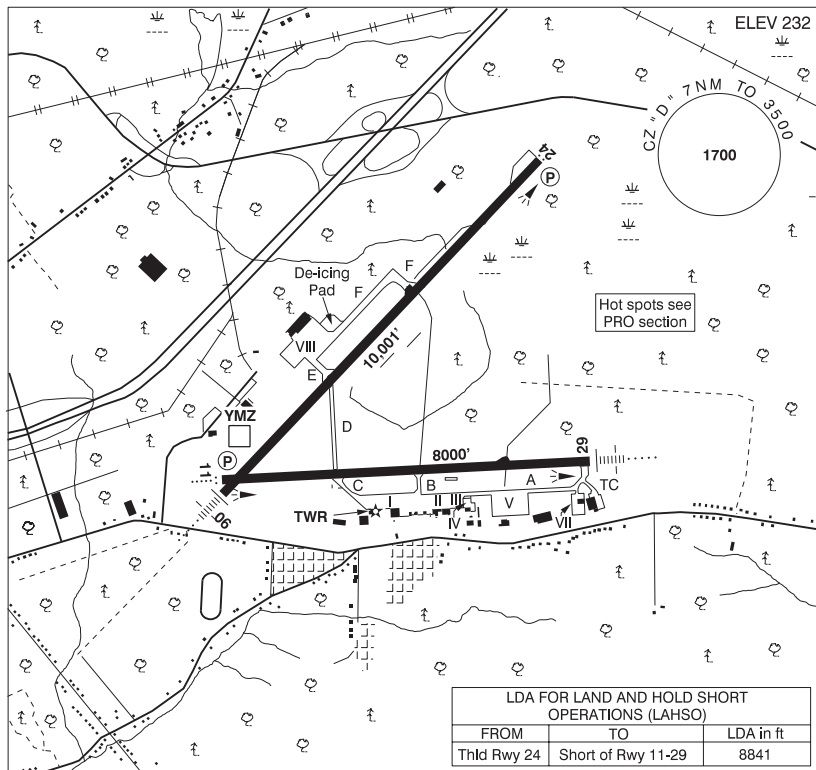
Class	Name	Floor	Ceiling
E	Moncton, NB b) [TSP]	3000MSL	12500MSL
E	Moncton/Greater Moncton Intl, NB [TA]	700AGL	18000MSL
E	Moncton, NB a) [TSP]	1800MSL	3000MSL
F	CYR728 DORCHESTER, NB	SFC	1200MSL
D	Moncton/Greater Moncton Intl, NB [CZ]	SFC	3500MSL
E	T698-2 Fixed RNAV Route	2200AGL	18000MSL

NEAREST AERODROMES & DISTANCE FROM OPERATION

GREATER MONCTON ROMEO LEBLANC INTL (CYQM - AERODROME - Cert)	Lat: 46.116	Long: -64.678	21.618KM	11.673NM	N
MCEWEN (CCG4 - AERODROME - Reg)	Lat: 46.154	Long: -64.769	27.541KM	14.871NM	N
CORMIER (CRM4 - AERODROME - Reg)	Lat: 46.181	Long: -64.376	35.047KM	18.924NM	NE

MONCTON / GREATER MONCTON ROMÉO LEBLANC INTL NB

CYQM



REF	N46 06 58 W64 40 43 4ENE 18°W (2013) UTC-4(3) Elev 232' A5003 LO8 HI6 T2 CAP OC
OPR	Greater Moncton International Airport Authority Inc 506-856-5444 0845-0415‡ O/T 2 hr PN call out charge Cert
PF	A-1,2,6 C-3,4,5
CUST	AOE/300 888-226-7277 12-04Z‡
FLT PLN	
FIC	London 866-WXBRIEF (Toll free within Canada) or 866-541-4104 (Toll free within Canada & USA)
ACC	(IFR only) Moncton 506-867-7177 or 866-480-8200.
WX	METAR H24 TAF H24, issue times: 00, 06, 12, 18Z

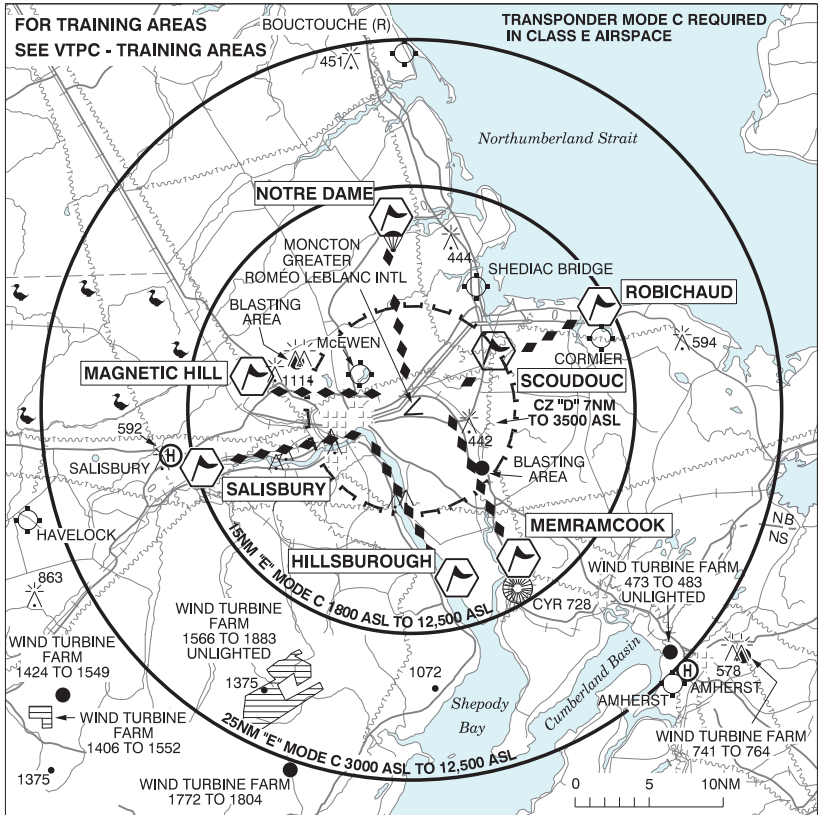
NEW BRUNSWICK

AERODROME / FACILITY DIRECTORY

MONCTON / GREATER MONCTON ROMÉO LEBLANC INTL NB (Cont'd) CYQM

SERVICES	Call out chg may be levied for one or more svcs.
FUEL	100LL, JA-1 (FSII avbl) PN ASIG 506-857-9140
OIL	All
S	1,2
ARFF	DESIGNATED CAT 6 (CAT 7 2 hr PN) 0845-0415‡ O/T 2 hr PN call out chg.
SUP FL	O & D-ice
JASU	(Hobart 1400 amp 30-40 volts), Elect Start 10/25, GTC/GTE-85 & NC-10A/A1/B/C
PVT ADV	Shell Aerocentre 122.15, ATS 131.75 Moncton Flight College 123.5 (Ltd hrs) Air Canada gnd hldg 130.37 506-857-1065 Skylink Express 131.37, ltd hangarage avbl
MIL CON	ASIG Canada 506-857-9140
RWY DATA	Rwy 06(061°)/24(241°) 10,001x200 ASPH Rwy 11(106°)/29(286°) 8000x200 ASPH RESA: All Rwy 492'
RWY CERT	Rwy 06 RVR 1200(1/4sm)/Rwy 24 RVR 1200(1/4sm) AGN V Rwy 11 RVR 1200(1/4sm)/Rwy 29 RVR 1200(1/4sm) AGN V
TWY CERT	Twy: A, B, C, D AGN IV
APRON	Acft manoeuvring on apron VIII must maintain a listening watch & are to broadcast their movement intentions on Apron VIII Advisory 122.075. Itinerant acft wishing to use Apron VIII ctc Airport Security 506-856-5429 - 2 hr PN. Apron IV (Moncton Flight College) restricted to acft 8,000 lbs or less.
RCR	Opr 506-850-8430 11-19Z‡ Mon-Fri exc hols O/T 2 hrs PN, call out charge. CRFI/RSC, PCN
LIGHTING	06-AN(TE HI), 24-AS(TE HI) P3 3.1°, 11-AO(TE HI) P3 3.1°, 29-AN(TE HI)
COMM	
RCO	London rdo 122.5 (FISE) 126.7 (bcst)
ATIS	128.65
APRON ADV	Apron VIII 122.075
GND	121.8 275.8
TWR	120.8 236.6 (E) (emerg only 506-867-7220)
ARR	124.4
DEP	124.4
PAL	124.4 127.125 132.2
NAV	
DME	YMZ 117.0 Ch 117 N46 06 33 W64 41 33 (233')
ILS	IQM 109.3 (Rwy 29) RVR IFG 109.7 (Rwy 06) RVR
PRO	De-icing apron VIII - Prior to pushback, broadcast intentions & monitor all movements on Apron Advisory 122.075. Proceed to de-icing pad. Pilots should refer to Canadian Airport Charts (CAC) to obtain details on established hot spots, prior to operating on maneuvering areas. CAC are available for free on the NAV CANADA website.
CAUTION	Training areas around CZ, see Moncton VTPC - Training areas.

MONCTON VFR TERMINAL PROCEDURES CHART



NAME	IDENT	LAT/LONG
HILLSBOROUGH	VCHLH	N45° 55' 30" W064° 37' 19"
MAGNETIC HILL	VCHLL	N46° 08' 00" W064° 56' 45"
MEMRAMCOOK	VCMMC	N45° 55' 19" W064° 30' 56"
NOTRE DAME	VCCND	N46° 18' 55" W064° 43' 42"
ROBICHAUD	VCCHD	N46° 12' 30" W064° 22' 42"
SALISBURY	VCSBY	N46° 01' 41" W065° 02' 24"
SCOUDOUC	VCSDC	N46° 09' 42" W064° 33' 38"

MONCTON VFR TERMINAL PROCEDURES CHART (Cont'd)**VFR FLIGHT PROCEDURES****NOTRE DAME**

Dep – Fly direct NOTRE DAME. Maintain 1500 feet until cleared higher or leaving the control zone.
Arr – From NOTRE DAME fly direct to clearance limit. Maintain 2500 feet until cleared lower or turning final.

ROBICHAUD

Dep – Fly direct to SCOUDOUC then direct to ROBICHAUD. Maintain 1500 feet until cleared higher or leaving the control zone.
Arr – Fly direct to SCOUDOUC and then to clearance limit. Maintain 2500 feet until cleared lower or turning final.

MEMRAMCOOK

Dep – Fly over the Trans Canada Hwy south to MEMRAMCOOK. Maintain 1500 feet until cleared higher or leaving the control zone.
Arr – From MEMRAMCOOK, fly over the Trans Canada Hwy north to clearance limit. Maintain 2500 feet until cleared lower or turning final.

HILLSBOROUGH

Dep – Fly over the Petitcodiac River south to HILLSBOROUGH. Maintain 1500 feet until cleared higher or leaving the control zone.
Arr – From HILLSBOROUGH, fly over the Petitcodiac River north to clearance limit. Maintain 2500 feet until cleared lower or turning final.

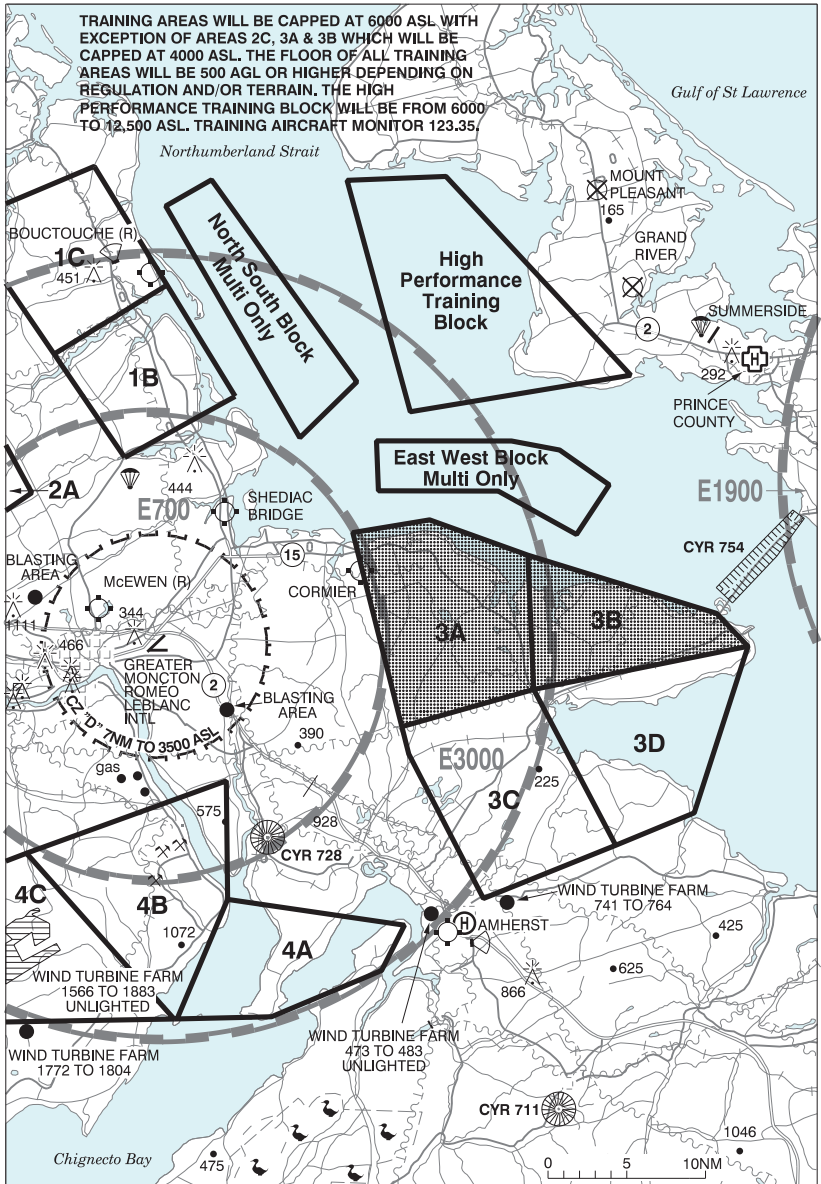
SALISBURY

Dep – Fly over the Petitcodiac River west to SALISBURY. Maintain 1500 feet until cleared higher or leaving the control zone.
Arr – From SALISBURY, fly over the Petitcodiac River east to clearance limit. Maintain 2500 feet until cleared lower or turning final.

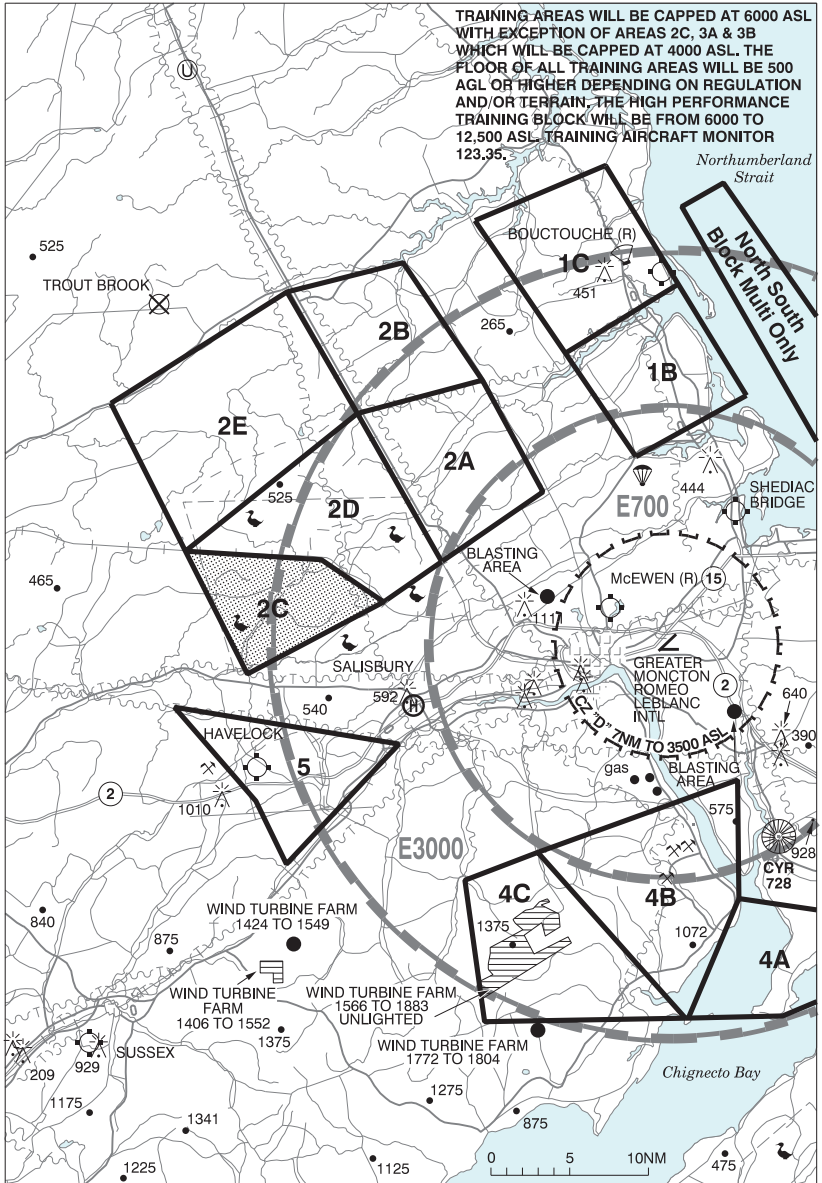
MAGNETIC HILL

Dep – Fly over the Trans Canada Hwy west to MAGNETIC HILL. Maintain 1500 feet until cleared higher or leaving the control zone.
Arr – From MAGNETIC HILL, fly over the Trans Canada Hwy east to clearance limit. Maintain 2500 feet until cleared lower or turning final.

MONCTON VFR TERMINAL PROCEDURES CHART - TRAINING AREAS
MONCTON FLIGHT COLLEGE - EAST PORTION



MONCTON VFR TERMINAL PROCEDURES CHART - TRAINING AREAS
MONCTON FLIGHT COLLEGE - WEST PORTION



NEW BRUNSWICK

AERODROME / FACILITY DIRECTORY

MONCTON / McEWEN NB

CCG4

REF	N46 09 14 W64 46 07 Adj 3N 18°W (2015) UTC-4(3) Elev 214' A5003	
OPR	Heritage Management 506-853-1918 Reg PPR	
PF	A-1 C-2,3,4,5,6	
FLT PLN		
FIC	London 866-WXBRIEF (Toll free within Canada) or 866-541-4104 (Toll free within Canada & USA)	
ACC	(IFR only) Moncton 506-867-7177 or 866-480-8200.	
RWY DATA	Rwy 08/26 3000x80 ASPH/GRASS, centre 35' ASPH Thld 08 displ 395'.	
RCR	Opr Ltd win maint	
LIGHTING	08-(TE LO), 26-(TE LO)	
COMM		
TWR	Moncton 120.8 236.6 (E) at Moncton A/D 4.4NM SE	
PRO	Rgt hand circuit Rwy 26 (CAR 602.96). IFR dep clnc ctc Moncton gnd 121.8. Ctc Moncton twr prior to dep.	
CAUTION	Grass area of rwy soft when wet. Training areas around A/D, see Moncton VTPC - Training areas. Blasting ops aprx 4NM WNW of A/D Mon-Fri (N46 09 42 W64 52 38 to N46 10 00 W64 51 14 to N46 10 08 W64 51 18 to N46 10 20 W64 51 49 to N46 09 53 W64 52 42 to N46 09 42 W64 52 38) sfc up to 820 ASL.	

NEW BRUNSWICK

AERODROME / FACILITY DIRECTORY

CORMIER NB

CRM4

REF	N46 10 51 W64 22 32 1.1NW 18°W (2015) UTC-4(3) Elev 84' A5003
OPR	George Cormier 902-748-2434 Reg PPR
PF	C-1,2,3,5
FLT PLN	
FIC	London 866-WXBRIEF (Toll free within Canada) or 866-541-4104 (Toll free within Canada & USA)
RWY DATA	Rwy 08(075°)/26(255°) 3000x80 GRASS
RCR	Opr
COMM	
ATF	tfc 123.2 5NM 3100 ASL

