
FLIGHT PLAN & SITE SURVEY

H 168-4153 RADIO CONTROL FLYING CLUB OF B.C.- 30302
COOPER AVE. MISSION, BC V4S 1J5

May 22, 2026



IMPORTANT NOTICE

Please ensure you have received all required authorizations prior to flight. This Site Survey was created using RPAS Wilco. The user accepts all responsibility for the accuracy of the information.

Terms & Conditions: rpswilco.com/#tnc

Mission Information

H 168-4153 RADIO CONTROL FLYING CLUB OF B.C.- 30302 COOPER AVE. MISSION, BC V4S 1J5

FLIGHT DETAILS

Reference No:	MAAC-168-4153
Project Name:	RADIO CONTROL FLYING CLUB OF B.C.
Pilot Name:	MAAC
Pilot Certificate:	
Mission Type:	VLOS
Flight Start:	May 22, 2026 07:31 PM
Flight End:	May 22, 2026 08:31 PM

LOCATION DETAILS

Flight Address:	30302 COOPER AVE. MISSION, BC V4S 1J5
Latitude:	49° 8' 48.80" N (49.147)
Longitude:	122° 23' 6.40" W (-122.385)
Field Elevation:	13 ft MSL
Altitude / Radius:	400 ft / 926 m (0.5 nm)
Classification:	UNCONTROLLED
FIR / Contact:	CZVR / 604-586-4500

REPORT CONTENTS

Site Survey • Obstacles (if available) • Nearby Aerodromes • Canadian Aviation Regulations • GFA • Aerodrome Supplements • METAR & TAF • NOTAMs • CFS





Flight Map & MODEL Details

MISSION LOCATION SURVEY

FLIGHT AREA MAP



MISSION LOCATION DETAILS

ROLE	LATITUDE	LONGITUDE
 MODEL	49° 8' 48.80" N 49.147	122° 23' 6.40" W -122.385
 Pilot		
 Payload Op.		
 Observer		

Airspace Classification

MISSION LOCATION SURVEY

AIRSPACE MAP



OVERLYING AIRSPACES

Class	Name	Floor	Ceiling
E	V304 VHF/UHF Airway	2200AGL	18000MSL
F	CYA186 (A,T,H) DICKSON LAKE, BC	SFC	6000MSL
E	Pitt Meadows, BC b) [CAE]	2000MSL	18000MSL
F	CYR 6.1.0-3 ALOUETTE CORRECTIONAL CENTRE FOR WOMEN, BC	SFC	1300MSL
F	CYR 6.1.0-5 FRASER REGIONAL CORRECTIONAL CENTRE, BC	SFC	1600MSL
C	Vancouver, BC l) [TCA]	4500MSL	6500MSL
F	CYA185 (A,T,H) ALOUETTE LAKE, BC	SFC	4000MSL
F	CYA188 (A,T) GLEN VALLEY, BC	SFC	5500MSL
C	Vancouver, BC s) [TCA]	6500MSL	8500MSL
C	Vancouver, BC t) [TCA]	8500MSL	9500MSL
C	Vancouver, BC u) [TCA]	9500MSL	12500MSL
B	Vancouver, BC v) [TCA]	12500MSL	18000MSL
E	T629 Fixed RNAV Route	2200AGL	18000MSL
E	T800 Fixed RNAV Route	2200AGL	18000MSL
E	Abbotsford, BC [TA]	1500AGL	18000MSL
C	Vancouver, BC h) [TCA]	5500MSL	6500MSL
F	CYR140 MISSION, BC	SFC	1500MSL
E	V342-1 VHF/UHF Airway	2200AGL	18000MSL
C	Abbotsford, BC [CZ]	SFC	4500MSL
E	T645-1 Fixed RNAV Route	2200AGL	18000MSL
C	Vancouver, BC i) [TCA]	4000MSL	6500MSL
F	CYR141 MATSQUI, BC (Abbotsford, BC)	SFC	300MSL
D	Vancouver, BC b) [TCA]	1500MSL	2500MSL
D	Abbotsford, BC [TSP]	1500MSL	2500MSL
E	Pitt Meadows, BC a) [CAE]	1500MSL	18000MSL
C	Langley, BC [CZ]	SFC	1900MSL
C	Vancouver, BC d) [TCA]	2500MSL	4500MSL
C	Pitt Meadows, BC [CZ]	SFC	2500MSL

NEAREST AERODROMES & DISTANCE FROM OPERATION

ABBOTSFORD (TECK) (CTK8 - HELIPORT - Reg)	Lat: 49.127	Long: -122.395	2.325KM	1.255NM	S
FORT LANGLEY (CAS4 - WATERDROME - Reg)	Lat: 49.167	Long: -122.533	11.001KM	5.94NM	W
FORT LANGLEY (CBQ2 - AERODROME - Reg)	Lat: 49.168	Long: -122.557	12.73KM	6.874NM	W

BRITISH COLUMBIA

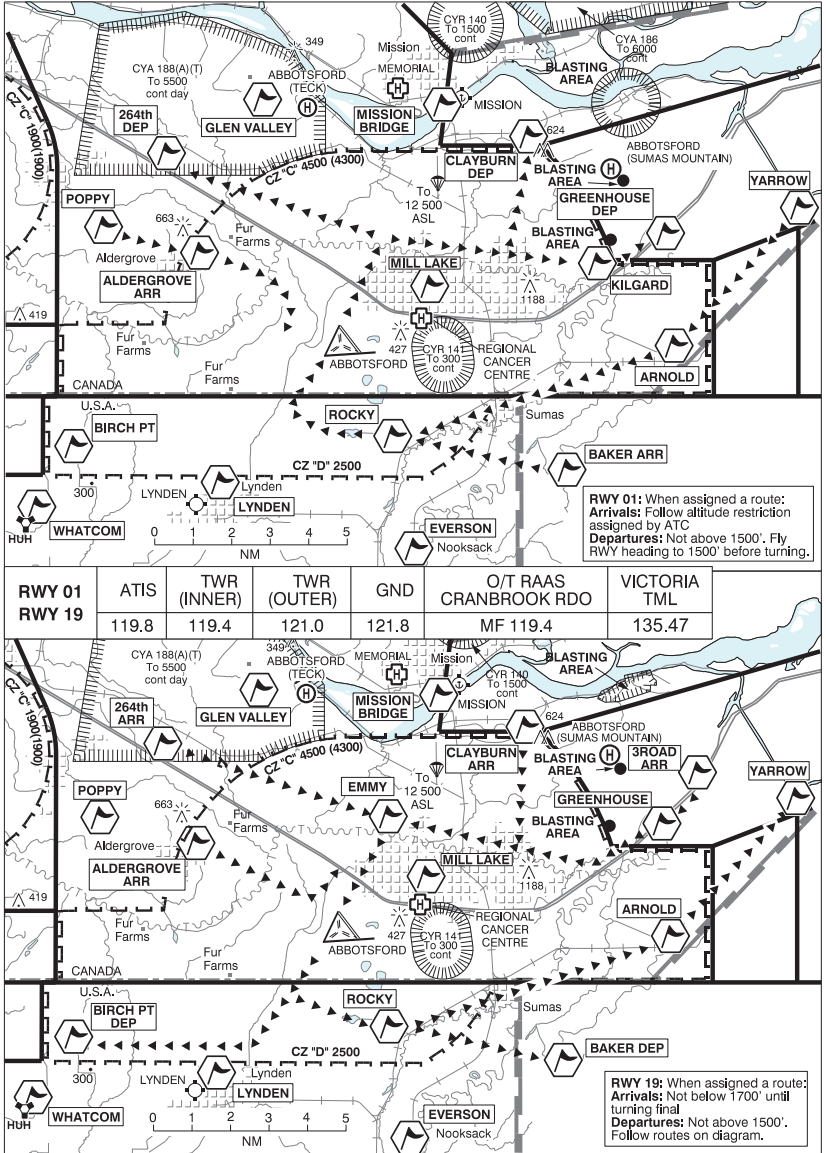
AERODROME / FACILITY DIRECTORY

ABBOTSFORD (TECK) BC (Heli)

CTK8

REF	N49 07 37 W122 23 41 6NW 17°E (2014) UTC-8(7) Elev 165' VTA A5004	
OPR	Tecklenair Aviation Ltd 604-328-7553 Reg PPR	
PF	A-1 D-2,3,4,5,6	
FLT PLN		
FIC	Kamloops 866-WXBRIEF (Toll free within Canada) or 866-541-4101 (Toll free within Canada & USA)	
SERVICES		
S	4	
HELI DATA	FATO 35' x 35' GRASS TLOF 15' x 15' GRASS Safety Area 100' x 100'	
RCR	Opr 16-01Z†	
COMM		
ATF	tfc 122.725 0.5NM 1000 ASL	
PRO	Arr/dep 305° & 203° fr heli day only. Within CYA 181 CFA 122.725, see VTA and VTPC.	
CAUTION	Extv tfc E and W over the Fraser River and Mission, CYXX CZ 1.5NM SE, see VTPC.	

ABBOTSFORD VFR TERMINAL PROCEDURES CHART RWY 01 & 19



ABBOTSFORD VFR TERMINAL PROCEDURES CHART RWY 01 & 19 (Cont'd)

NAME	IDENT	LAT/LONG
264th	VCXYZ	N49° 06' 06" W122° 29' 36"
3ROAD	VCTRD	N49° 05' 23" W122° 07' 29"
ALDERGROVE	VCGRV	N49° 03' 30" W122° 28' 12"
ARNOLD	VCARN	N49° 01' 00" W122° 09' 00"
BAKER	VCBKR	N48° 57' 42" W122° 13' 24"
BIRCH POINT	VCBPT	N48° 56' 36" W122° 49' 06"
CLAYBURN	VCCYB	N49° 06' 36" W122° 14' 54"
EMMY	VCEMY	N49° 04' 12" W122° 20' 26"
EVERSON	VCEVR	N48° 55' 48" W122° 19' 24"
GLEN VALLEY	VCGLN	N49° 07' 36" W122° 25' 42"
GREENHOUSE	VCGRE	N49° 04' 00" W122° 09' 18"
KILGARD	VCKLH	N49° 03' 12" W122° 12' 06"
LYNDEN	VCLDN	N48° 57' 24" W122° 27' 24"
MILL LAKE	VCMLK	N49° 02' 36" W122° 18' 54"
MISSION BRIDGE	VCMSB	N49° 07' 24" W122° 18' 24"
POPPY	VCPPY	N49° 04' 12" W122° 32' 12"
ROCKY	VCRKY	N48° 58' 36" W122° 20' 24"
WHATCOM	VCWCM	N48° 56' 43" W122° 34' 45"
YARROW	VCYAR	N49° 04' 50" W122° 03' 53"

ARRIVALS

Obtain ATIS on 119.8 – contact tower on 121.0 when advertised.

RWY 01 - No altitude restriction unless assigned by ATC

ALDERGROVE - Fly direct the airport, join left downwind RWY 01.

BAKER - Fly direct ROCKY. Join right base RWY 01.

YARROW - Fly direct ARNOLD, then ROCKY. Join right base RWY 01.

RWY 19 – All Arrival Routes: Not Below 1700 until turning final.

3ROAD - Fly to GREENHOUSE, follow powerlines westbound. Turn final at EMMY.

Caution: Terrain at KILGARD.

CLAYBURN - Fly southbound to powerlines. Follow powerlines westbound. Turn final at EMMY.

264th - Fly direct EMMY, then turn final. *Do not follow HWY1.

ALDERGROVE - Fly direct airport. Join mid-right downwind RWY 19.

DEPARTURES

All Routes: Not Above 1500 until cleared higher.

RWY 01:

264th - Fly RWY heading to 1500, then turn direct 264th.

CLAYBURN - Fly RWY heading to 1500, then turn eastbound to the Mission Hwy, then direct CLAYBURN.

GREENHOUSE - Fly RWY heading to 1500, then turn direct KILGARD, then GREENHOUSE.

RWY 19:

BIRCH PT - Fly RWY heading until South of US Border. Then direct BIRCH PT.

BAKER - Fly RWY heading until South of US Border. Then direct BAKER.

YARROW - Fly RWY heading until South of US Border, then direct ROCKY, ARNOLD then YARROW.

ABBOTSFORD VFR TERMINAL PROCEDURES CHART RWY 01 & 19 (Cont'd)

OBTAINING A TRANSPONDER CODE:

All VFR aircraft arriving/departing/overflying Abbotsford Class C or D airspace require a transponder code. Recommended methods of obtaining transponder code:

- Filing a VFR flight plan
- Contacting Kamloops FIC at 1-866-541-4101
- Contacting Pacific Radio on frequency 122.5 or 126.7
- Via text message through the NAV CANADA Transponder Code Retrieval (TCR) system.

Medium and High-performance aircraft call YXX Tower in advance of requesting VFR training in the area.

CANADA WATER AERODROME SUPPLEMENT

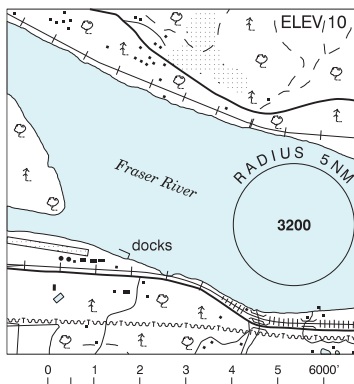
Effective 0901Z 19 March 2026 to 0901Z 18 February 2027

AERODROME/FACILITY DIRECTORY B59

FORT LANGLEY BC

CAS4

REF	N49 10 W122 32 17°E (2013) UTC-8(7) Elev 10' VTA A5004
OPR	Fort Langley Avn 604-888-1922 Reg PPR
PF	A-1 C-2,3,4,5 D-6
FLT PLN	FIC Kamloops 866-WXBRIEF (Toll free within Canada) or 866-541-4101 (Toll free within Canada & USA)
SERVICES	
FUEL	100LL, JA
S	1,4,5
A/D DATA	Current 3-5 kt, sand beach & ramp.
COMM	
ATF	tfc 122.725 2NM 1500 ASL
NAV	
VOR	PITT MEADOWS YPK 112.4 N49 12 57 W122 42 54 (44')
PRO	Circuits 1000' over river. Follow the southside of the chan for eastbound water ldg. No water circuits or floatplane tng in vic of MacMillan Island.

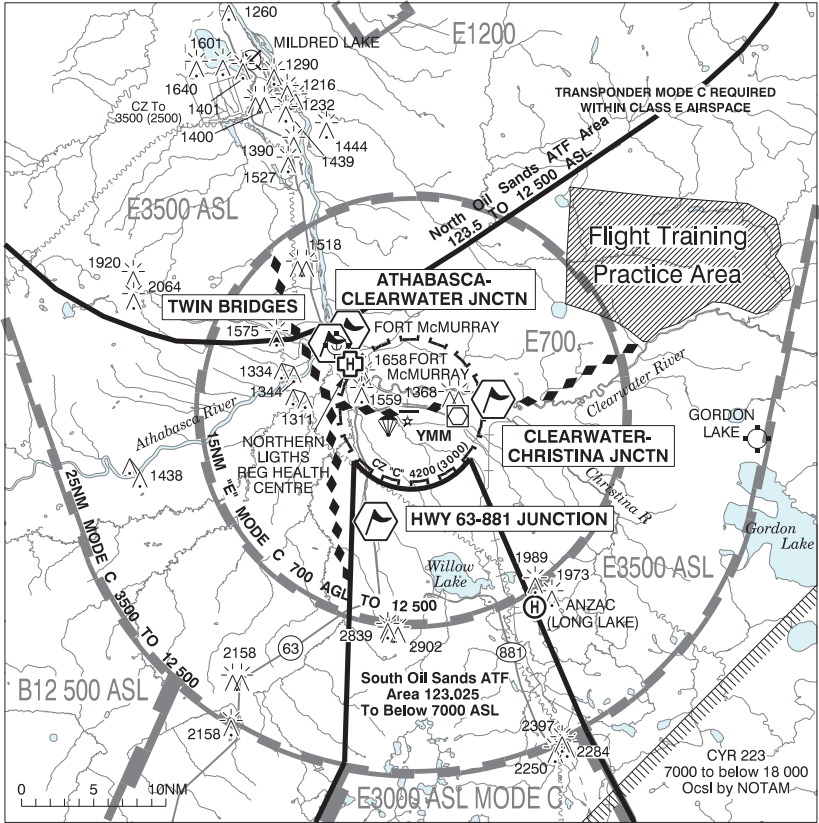


CANADA WATER AERODROME SUPPLEMENT

Effective 0901Z 19 March 2026 to 0901Z 18 February 2027

B60 AERODROME/FACILITY DIRECTORY

FORT McMURRAY VFR TERMINAL PROCEDURES CHART



NAME	IDENT	LAT/LONG
ATHABASCA - CLEARWATER JUNCTION	VCABA	N56° 44' 00" W111° 23' 12"
CLEARWATER - CHRISTINA JUNCTION	VCCLW	N56° 39' 54" W111° 03' 06"
HWY 63 - 881 JUNCTION	VCJCT	N56° 31' 30" W111° 18' 06"
TWIN BRIDGES	VCTWB	N56° 43' 54" W111° 23' 36"

BRITISH COLUMBIA

AERODROME / FACILITY DIRECTORY

FORT LANGLEY BC

CBQ2

REF	N49 10 04 W122 33 27 Adj 17°E (2014) UTC-8(7) Elev 33' VTA A5004	
OPR	Fort Langley Avn 604-888-1922 PPR Reg	
PF	A-1 C-2,3,4,5 D-6	
FLT PLN	FIC Kamloops 866-WXBRIEF (Toll free within Canada) or 866-541-4101 (Toll free within Canada & USA)	
SERVICES	FUEL 100LL, JA S 1,4,5	
RWY DATA	Rwy 08(082°)/26(262°) 5510X60 ASPH	
RCR	Opr 604-888-1922 Ltd win maint	
COMM		
ATF	tfc 122.725 2NM 1500 ASL	
NAV		
VOR	PITT MEADOWS YPK 112.4 N49 12 57 W122 42 54 (44')	
PRO	Rgt hand circuits Rwy 26 (CAR 602.96). Circuit hgt 1000 ASL. No training flights. No overflight of Fort Langley community & MacMillan Island below 1000 ASL. Procedures for crossing the southern Strait of Georgia within Tml Class C airspace refer to Vancouver Intl, VTPC for Crossing the Southern Strait of Georgia.	
CAUTION	Trees to 80 AGL along N side	